

Pavilion

Davidson Homes in Huntsville, AL

Welcome to Pavilion, the newest community from Davidson Homes in Huntsville, AL. As the premier home builder in the area, we are excited to offer stunning single-family homes and townhouses that will fill you with pride and comfort.

This community is conveniently located near Highway 231, putting you within easy reach of all that Huntsville has to offer. Plus, residents will love the nearby McGucken Park for outdoor activities and family fun. When you're ready to hit the links, head over to the Valley Hill Country Club, just a short 5-mile drive away.

Features

Located Near HWY 231
Mountain Views
Close to McGucken Park

Local Schools

Challenger Elementary
Challenger Middle
Virgil Grissom High

Utilities

Electric: Huntsville Utilities
Water: Huntsville Utilities



Community Address

1715 Stampede Circle SE

New Homes

05

Floor Plans

09

Homes from the

\$300s

Copyright 2024 Davidson Homes LLC | All Rights Reserved | Davidson Homes is a leading builder of quality new homes across the Southeast. Davidson Homes reserves the right to adjust items listed without prior notice or obligation. Such items may include, but are not limited to, options, included features and community information, pricing, amenities, square footage, terms or availability. Features, options, floor plans, elevations, colors, dimensions and photographs are for illustration purposes and may vary from homes built. Please see your community specialist for details. Equal housing lender. Last Updated 04/23/2024.





Pavilion in Huntsville, AL

Quick Move-In Homes

UPDATED
04/23/2024

HOMES
05

Sharon P. & Chandler W.
Call **(256) 900-8231**

COMMUNITY ADDRESS
1715 Stampede Circle SE



Apr '24

\$314,900

3 Beds 2.5 Baths 2,223 Sq Ft

1717 Stampede Circle | #23

The Camden B Plan



Apr '24

~~\$316,002~~ **\$304,900**

3 Beds 2.5 Baths 2,223 Sq Ft

1719 Stampede Circle | #24

The Camden C Plan



Apr '24

\$314,900

3 Beds 2.5 Baths 2,223 Sq Ft

1721 Stampede Circle | #25

The Camden D Plan



Apr '24

~~\$316,622~~ **\$304,900**

3 Beds 2.5 Baths 2,223 Sq Ft

1723 Stampede Circle | #26

The Camden Plan



Apr '24

~~\$411,833~~ **\$399,900**

4 Beds 2.5 Baths 2,505 Sq Ft

1722 Stampede Circle | #67

The Charleston D Plan



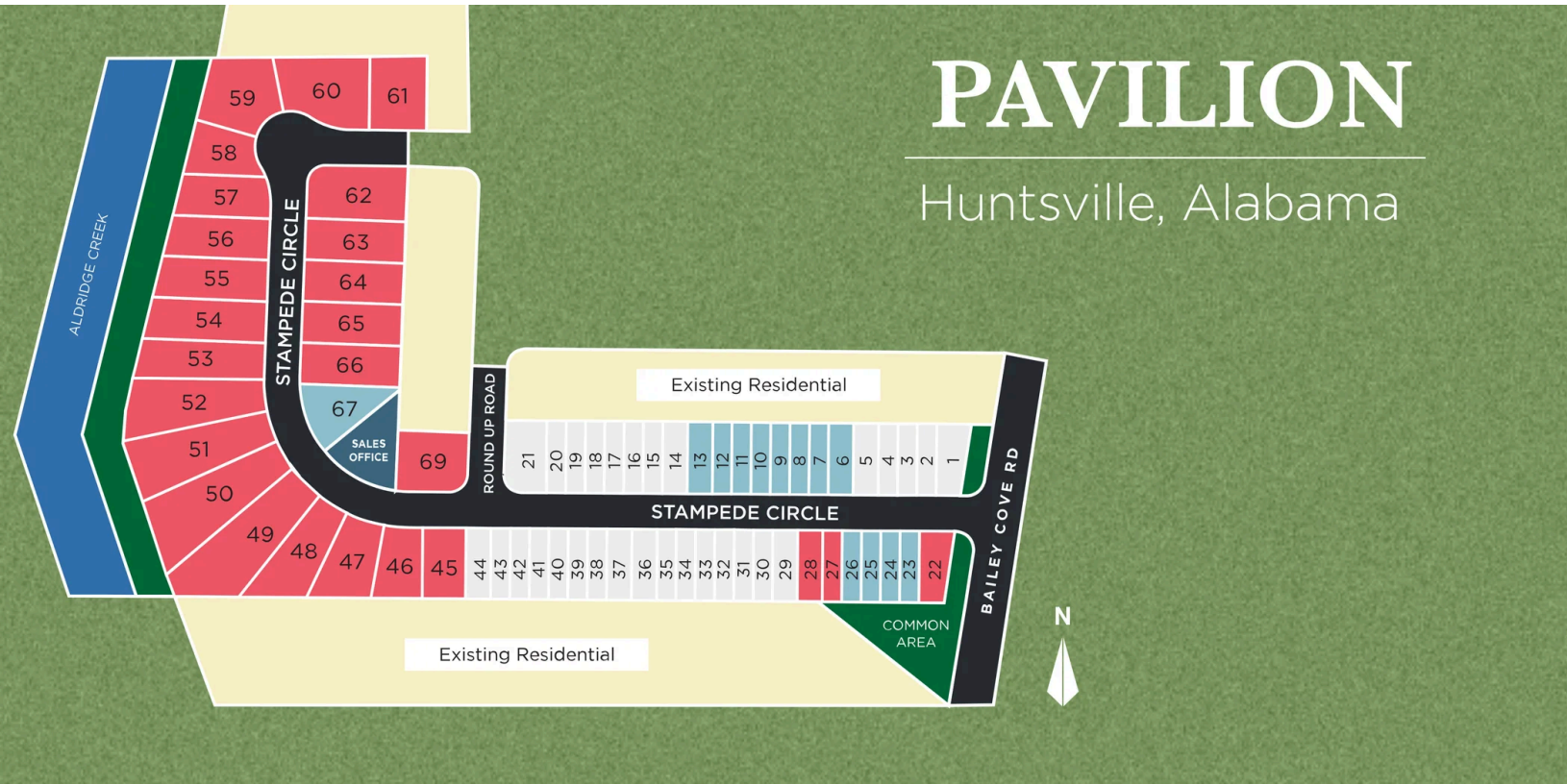


Pavilion in Huntsville, AL

Community Homesite Map

Sharon P. & Chandler W.

Call (256) 900-8231



QUICK MOVE-IN

COMING SOON

SOLD

Featured Homes for Sale



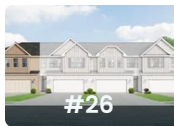
The Camden B
1717 Stampede Circle
\$314,900



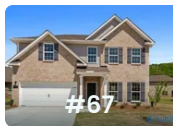
The Camden C
1719 Stampede Circle
\$304,900



The Camden D
1721 Stampede Circle
\$314,900



The Camden
1723 Stampede Circle
\$304,900



The Charleston D
1772 Stampede Circle
\$399,900



The Camden

Exterior Options



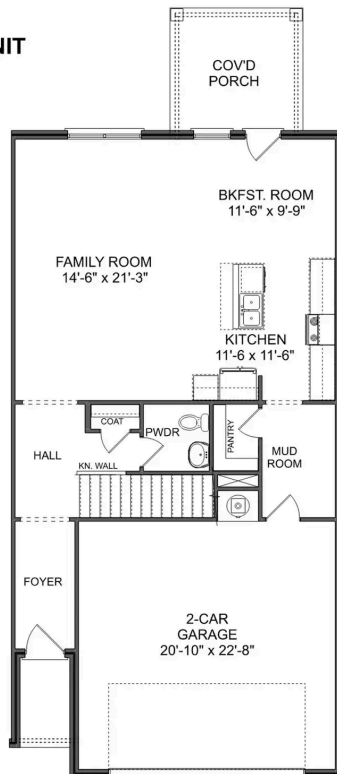
BEDS
3

BATHS
2.5

SQ FT
2,198

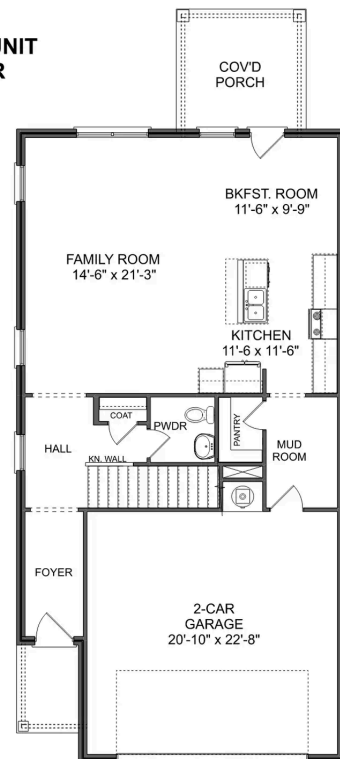
PARKING
2

**CAMDEN INT. UNIT
MAIN FLOOR**



THE CAMDEN A INTERIOR UNIT MAIN FLOOR

**CAMDEN EXT. UNIT
MAIN FLOOR**



THE CAMDEN A EXTERIOR UNIT MAIN FLOOR

The Camden

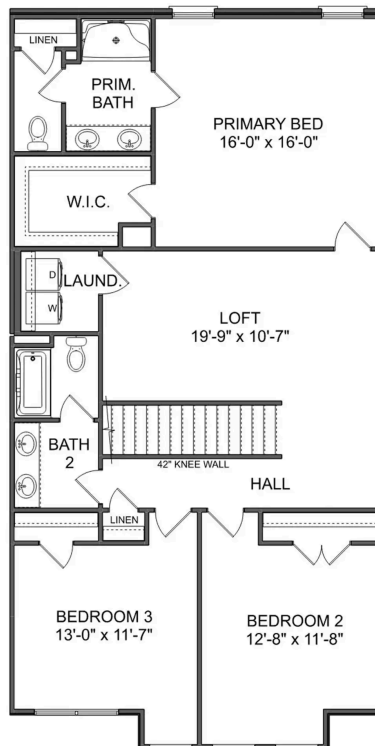
The Camden Floor Plan introduces a charismatic 2,198 square foot townhome that combines contemporary functionality with classic charm. As you approach the property, you are welcomed by a two-car garage and a delightful covered porch leading to a spacious foyer. Immediately, the home reveals an open concept layout, marrying the dining, living, and kitchen areas seamlessly. The kitchen boasts high-quality stainless-steel appliances and recessed lighting, creating a bright and modern ambiance for preparing meals. Adjacent to the kitchen, a convenient mudroom provides a practical space for outerwear and storage, further adding to the practical aspects of the floor plan. The living area, with its optional tile features, provides the perfect place to gather for cozy evenings or entertaining guests.

BEDS
3

BATHS
2.5

SQ FT
2,198

GARAGE
2



THE CAMDEN A UPPER FLOOR

The Asheville

Exterior Options

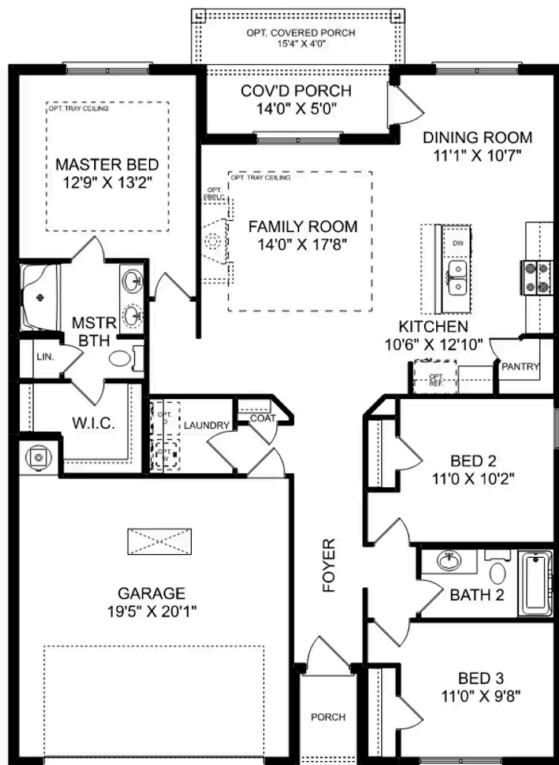


BEDS
3

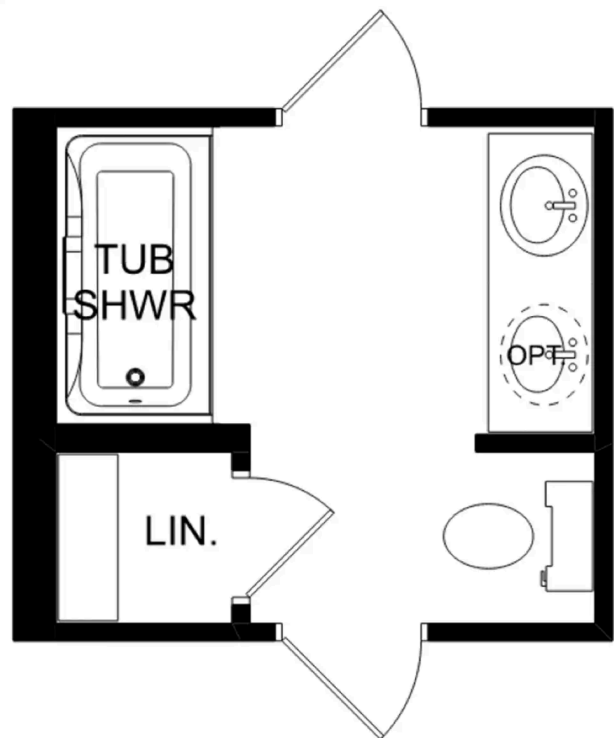
BATHS
2

SQ FT
1,484

PARKING
2



THE ASHEVILLE



THE ASHEVILLE OPTIONS

The Franklin



Exterior Options

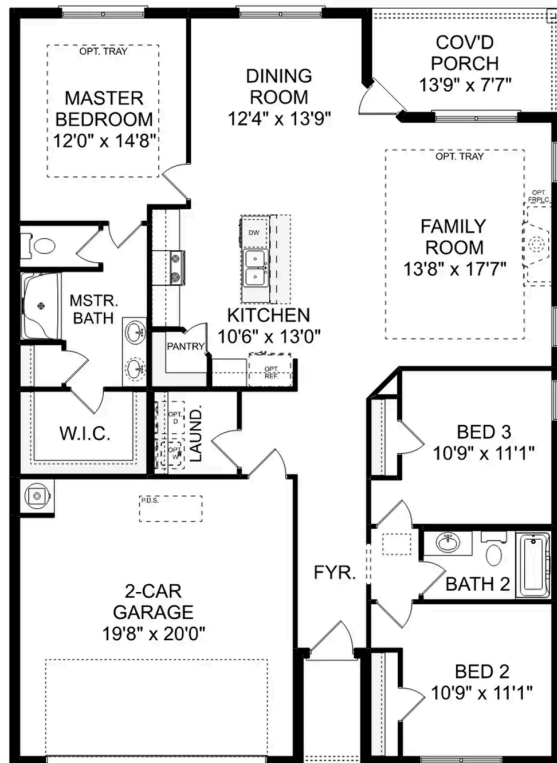


BEDS
3

BATHS
2

SQ FT
1,620

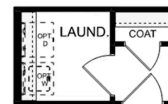
PARKING
2



THE FRANKLIN



OPT. DROP ZONE



OPT. COAT CLOSET



OPT. DELUXE MASTER BATH

THE FRANKLIN OPTIONS

The Daphne

Exterior Options

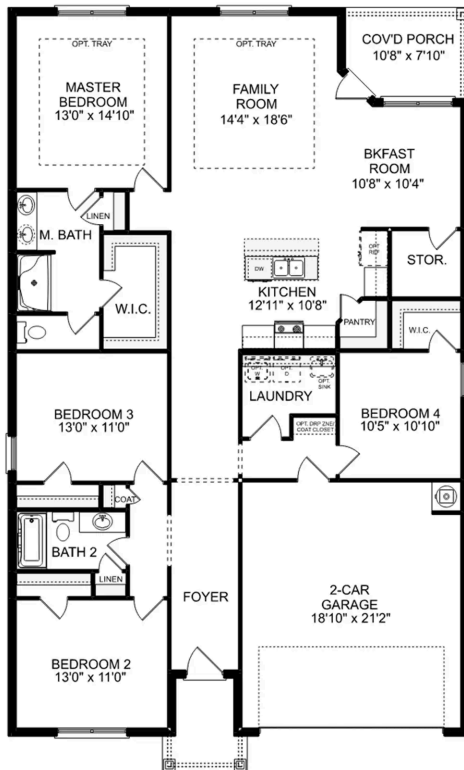


BEDS
4

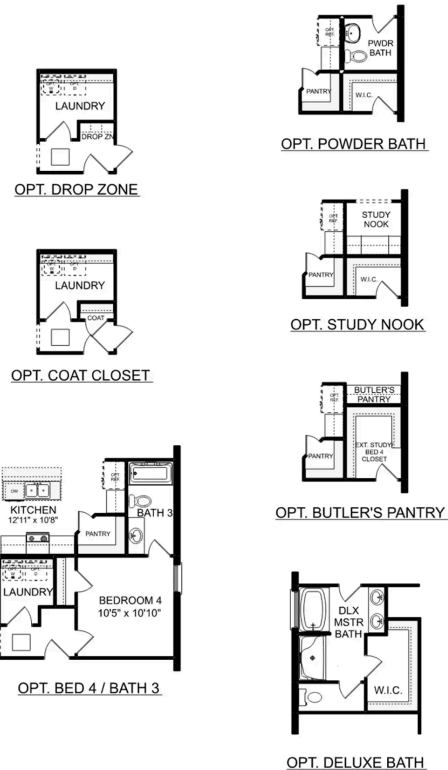
BATHS
2

SQ FT
1,964

PARKING
2



THE DAPHNE



THE DAPHNE OPTIONS



Pavilion in Huntsville, AL

Call (256) 900-8231
DAVIDSONHOMESLLC.COM

The Everett

Exterior Options

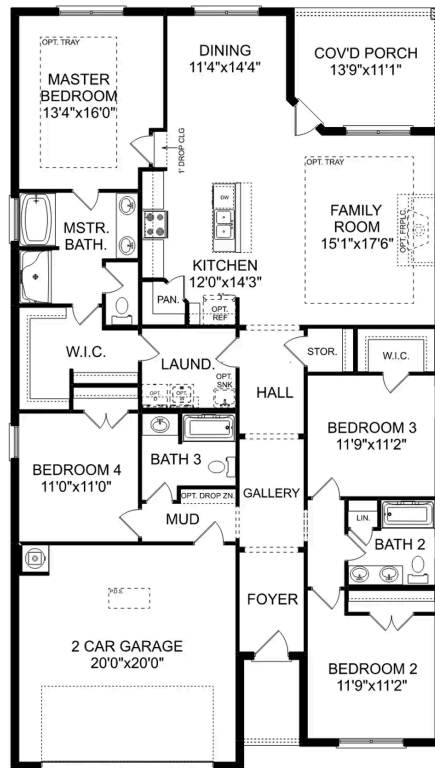


BEDS
4

BATHS
3

SQ FT
2,136

PARKING
2



THE EVERETT



The Shelby A

Exterior Options

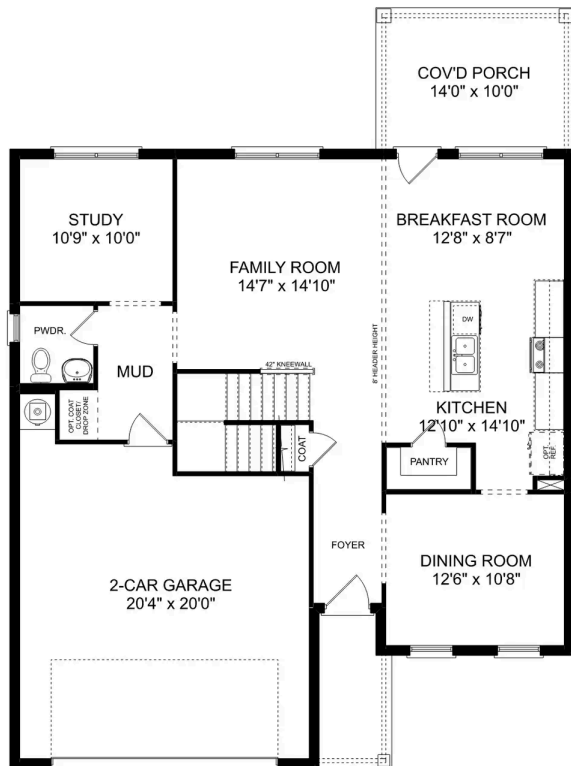


BEDS
3

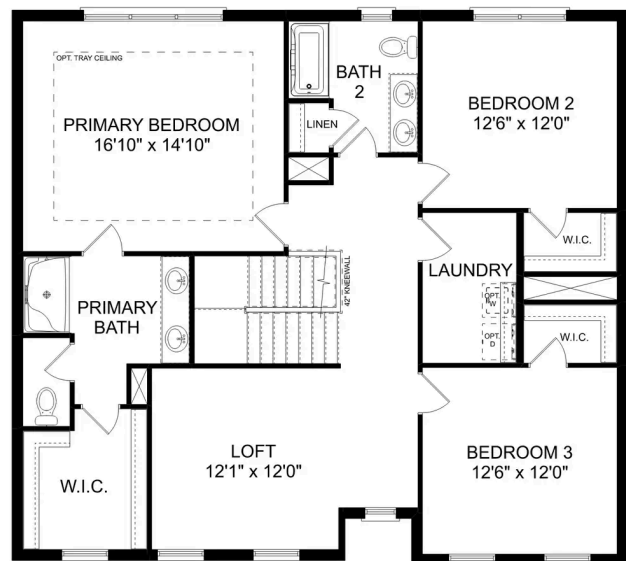
BATHS
2.5

SQ FT
2,452

PARKING
2



MAIN FLOOR



UPPER FLOOR

The Shelby A

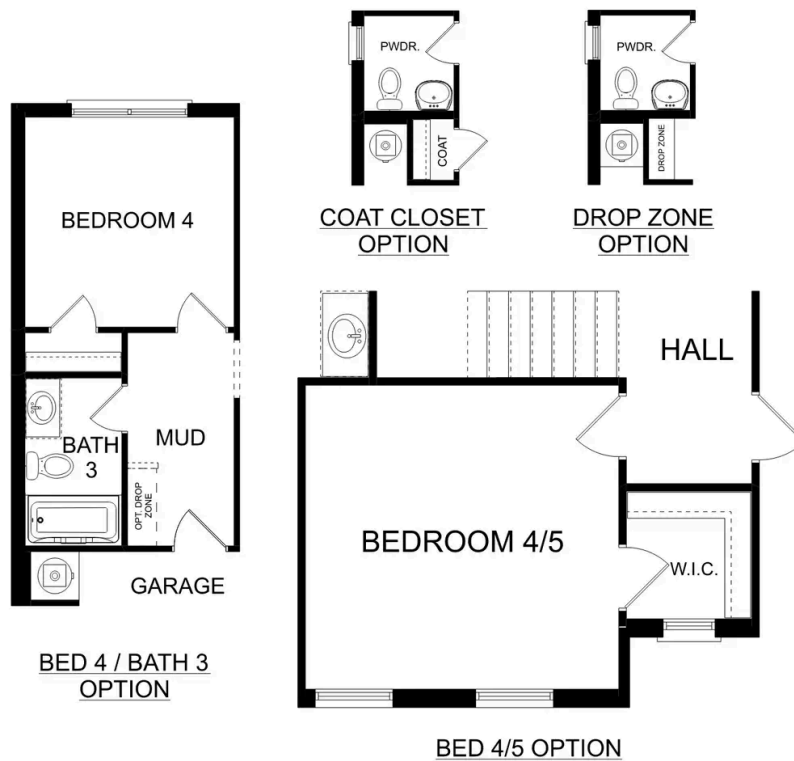
The Shelby welcomes you into a modern, open space, complete with a formal dining room and study. The kitchen overlooks an open-concept family room. The second floor features a spacious master bedroom with a large walk-in closet and master bath along with two additional bedrooms with ample walk-in closets of their own.

BEDS
3

BATHS
2.5

SQ FT
2,452

GARAGE
2



PLAN OPTIONS

The Charleston D



Description

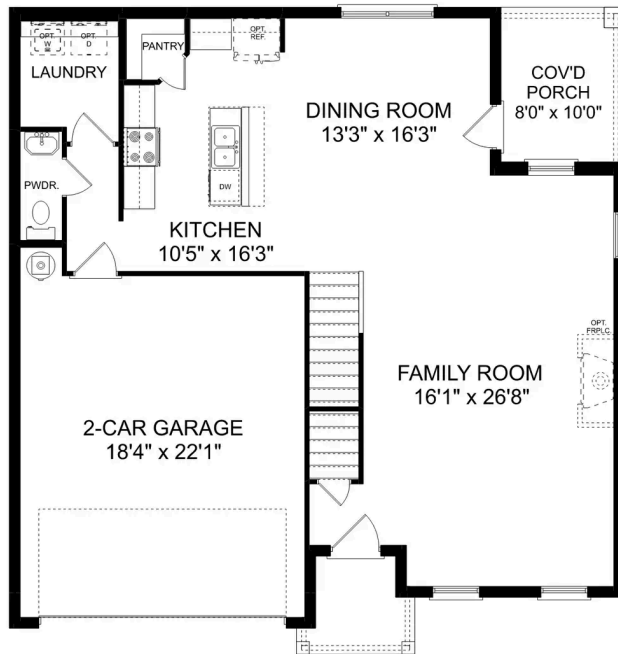
The sky's the limit with The Charleston's two-story layout and massive bonus room. Inside the home's brick exterior, the open-concept kitchen overlooks the huge family room. The Master Suite offers you a personal retreat – complete with large walk-in closet.

BEDS
4

BATHS
2.5

SQ FT
2,505

PARKING
2



THE CHARLESTON D MAIN FLOOR



THE CHARLESTON D UPPER FLOOR

The Charleston D

The sky's the limit with The Charleston's two-story layout and massive bonus room. Inside the home's brick exterior, the open-concept kitchen overlooks the huge family room. The Master Suite offers you a personal retreat – complete with large walk-in closet. Whether you're looking for a game room or a fifth bedroom, the upstairs bonus room gives you all the flexibility you need. Make it your own with The Charleston's flexible floor plan! Just know that offerings vary by location, so please discuss our standard features and upgrade options with your community's agent.

BEDS
4

BATHS
2.5

SQ FT
2,505

GARAGE
2



THE CHARLESTON D OPTIONS

The Chelsea A

Exterior Options

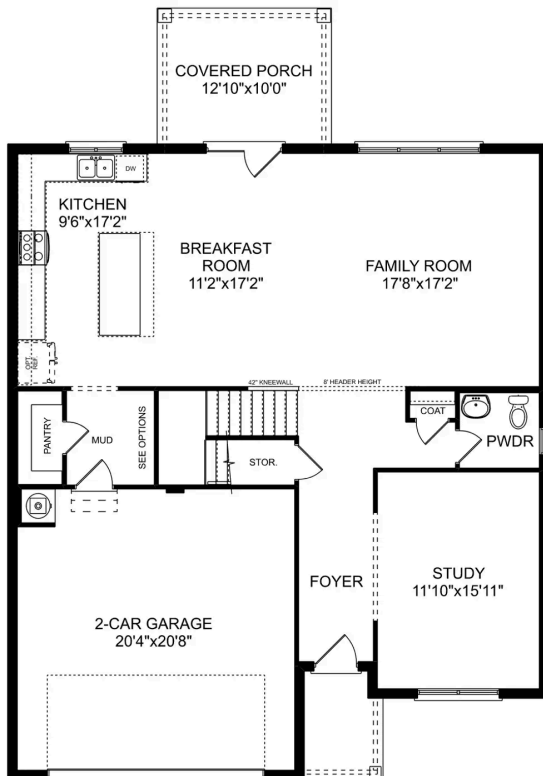


BEDS
4

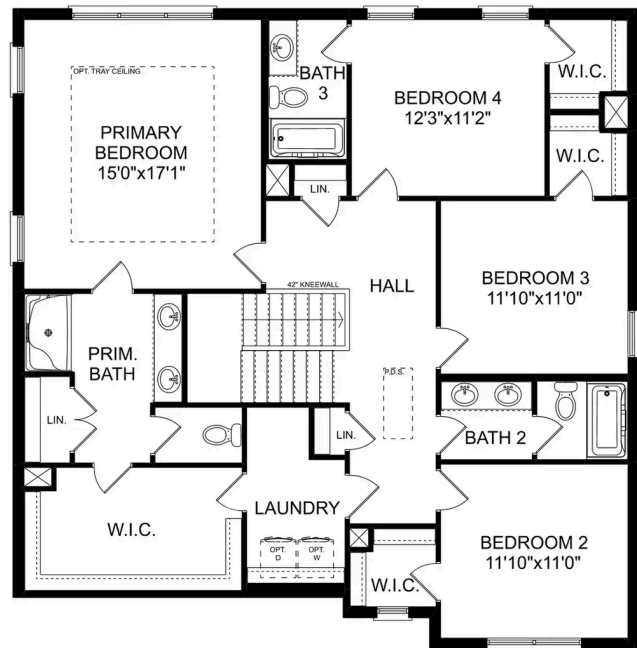
BATHS
3.5

SQ FT
2,769

PARKING
2



MAIN FLOOR



UPPER FLOOR

The Chelsea A

The Chelsea's windows fill the open floor plan with natural light, welcoming you into this charming home. The kitchen showcases ample counterspace, overlooking the breakfast and family room. A large study on the first floor offers potential, and the home's second floor features four bedrooms, each with plenty of closet space. The master bedroom is separate from the other bedrooms for added privacy, and the fourth bedroom features its own private bath.

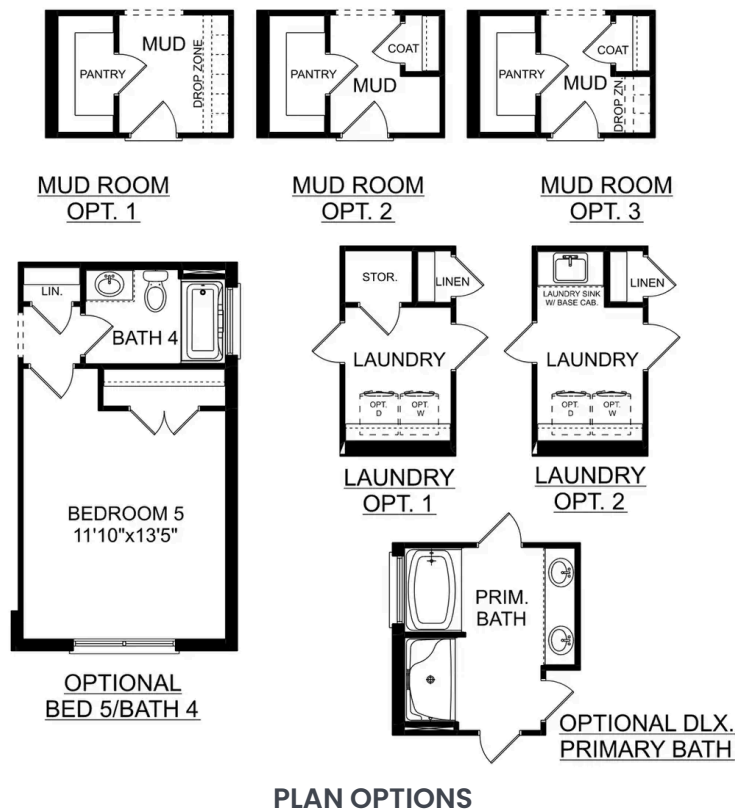
Make it your own with The Chelsea's flexible floor plan. Offerings vary by location, so please discuss your options with your community's agent.

BEDS
4

BATHS
3.5

SQ FT
2,769

GARAGE
2



The Richmond D



Description

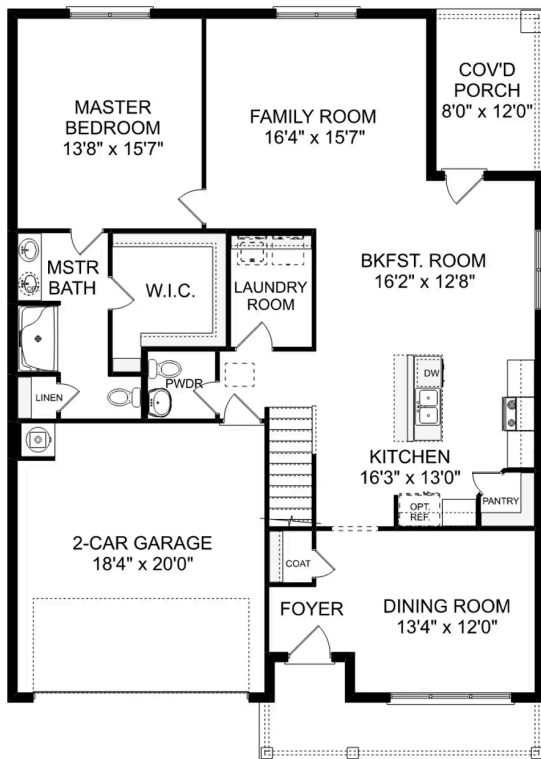
Starring five bedrooms and plenty of space, The Richmond features a sprawling layout! Enter the foyer and discover the elegant dining room to the left. The home quickly expands into an open-concept living space, as the charming kitchen overlooks the breakfast nook and family room.

BEDS
5

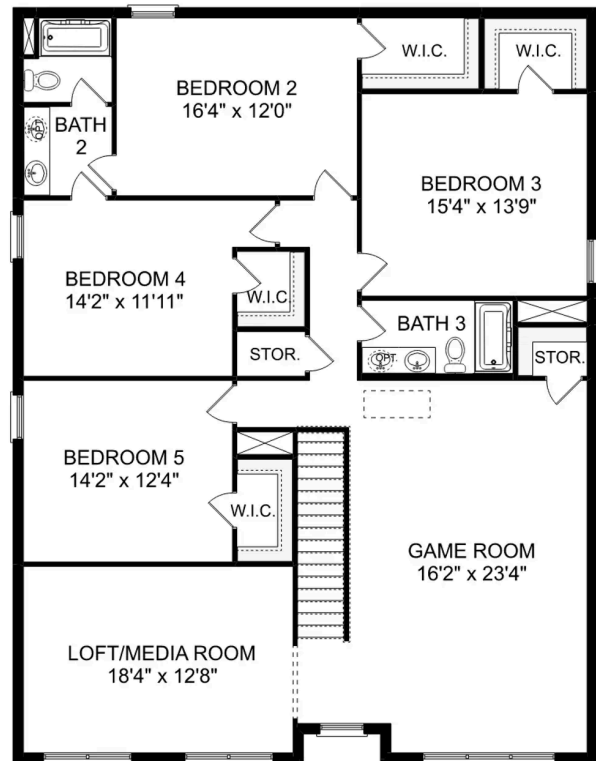
BATHS
3.5

SQ FT
3,537

PARKING
2



THE RICHMOND D MAIN FLOOR



THE RICHMOND D UPPER FLOOR

The Richmond D

Starring five bedrooms and plenty of space, The Richmond features a sprawling layout! Enter the foyer and discover the elegant dining room to the left. The home quickly expands into an open-concept living space, as the charming kitchen overlooks the breakfast nook and family room. Continue through to the Master Suite, featuring a huge walk-in closet.

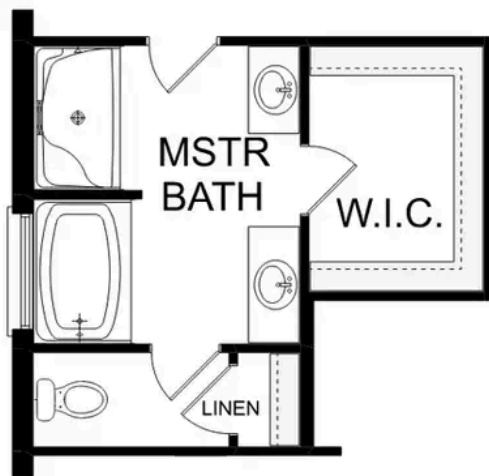
Upstairs, the plan features four more bedrooms, in addition to a game room and media room. Whether you're looking for a home theater or a home gym, The Richmond offers all the space you need.

BEDS
5

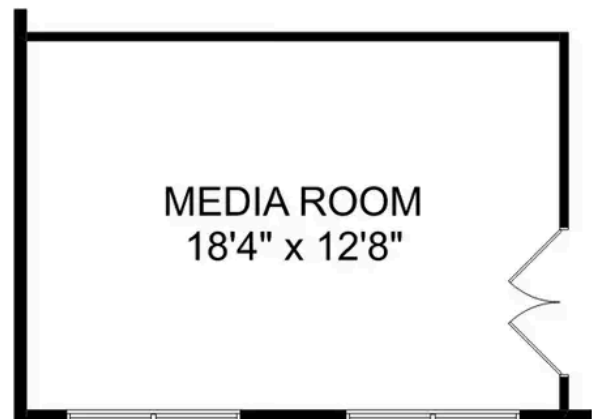
BATHS
3.5

SQ FT
3,537

GARAGE
2



OPTIONAL DELUXE
MASTER BATH



OPTIONAL
MEDIA ROOM

THE RICHMOND D OPTIONS