

# Caney Creek Place

Davidson Homes in Conroe, TX

Nestled within the charming city of Conroe, TX, Caney Creek Place offers a peaceful retreat from the hustle and bustle of daily life. This community is set to become a sought-after destination for families, retirees, and professionals alike.

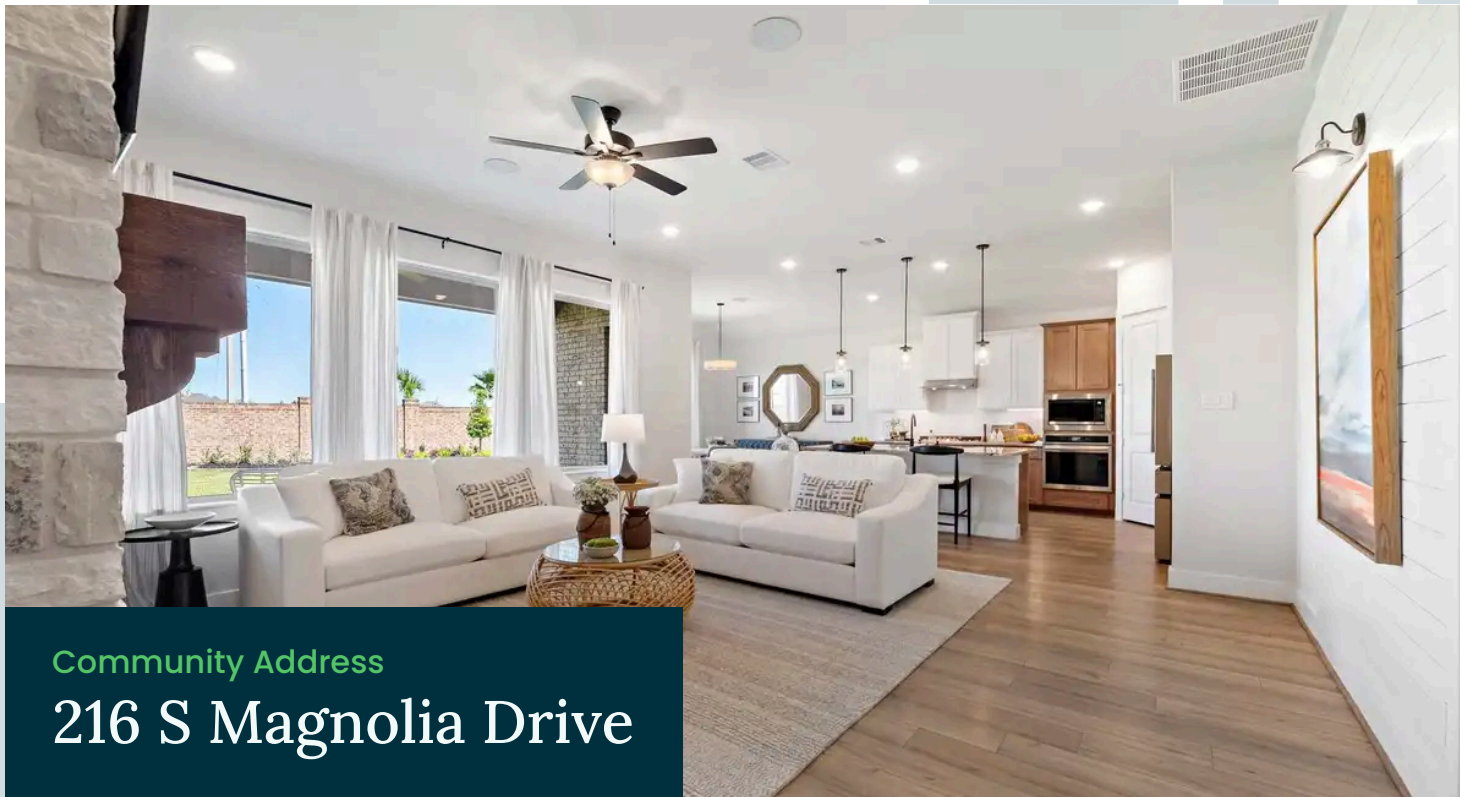
Featuring stylish single-family homes designed by Davidson Homes, Caney Creek Place is the perfect place to call home. From spacious living areas to a masterfully planned layout, each residence offers a unique combination of comfort and luxury. Whether you're an empty nester or a growing family, there's a floor plan that's perfect for you.

## Features

Easy Access to I-45  
Wooded Surroundings

## Local Schools

Bozman Elementary  
Washington Middle  
Conroe High



Community Address

216 S Magnolia Drive

Floor Plans

08

Homes from the

\$200s

Copyright 2024 Davidson Homes LLC | All Rights Reserved | Davidson Homes is a leading builder of quality new homes across the Southeast. Davidson Homes reserves the right to adjust items listed without prior notice or obligation. Such items may include, but are not limited to, options, included features and community information, pricing, amenities, square footage, terms or availability. Features, options, floor plans, elevations, colors, dimensions and photographs are for illustration purposes and may vary from homes built. Please see your community specialist for details. Equal housing lender. Last Updated 04/26/2024.





Caney Creek Place in Conroe, TX

# Community Homesite Map

David Nice  
Call (713) 766-6379



## CANEY CREEK PLACE

Conroe, Texas



COMING SOON

AVAILABLE





Caney Creek Place in Conroe, TX

Call (713) 766-6379  
DAVIDSONHOMESLLC.COM

## The Comal F

### Exterior Options

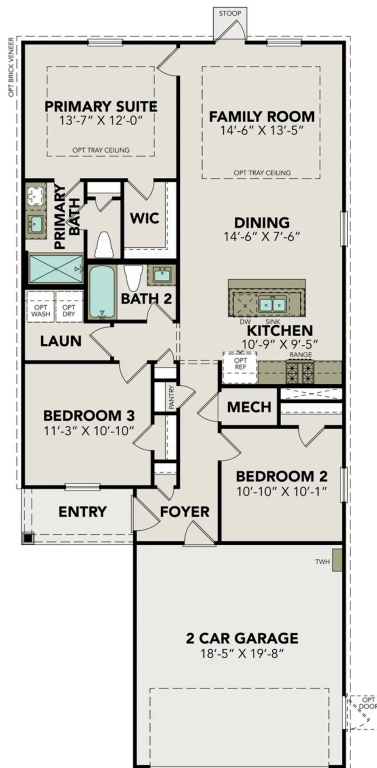


BEDS  
**3**

BATHS  
**2**

SQ FT  
**1,253**

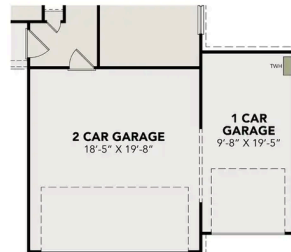
PARKING  
**2**



MAIN FLOOR PLAN



OPT COVERED PATIO



OPT 3RD CAR GARAGE



OPT 5' EXTENDED GARAGE

OPTIONS

Copyright 2024 Davidson Homes LLC | All Rights Reserved | Davidson Homes is a leading builder of quality new homes across the Southeast. Davidson Homes reserves the right to adjust items listed without prior notice or obligation. Such items may include, but are not limited to, options, included features and community information, pricing, amenities, square footage, terms or availability. Features, options, floor plans, elevations, colors, dimensions and photographs are for illustration purposes and may vary from homes built. Please see your community specialist for details. Equal housing lender. Last updated 03/08/2024.





# The Frio F

## Exterior Options



**BEDS**  
**3**

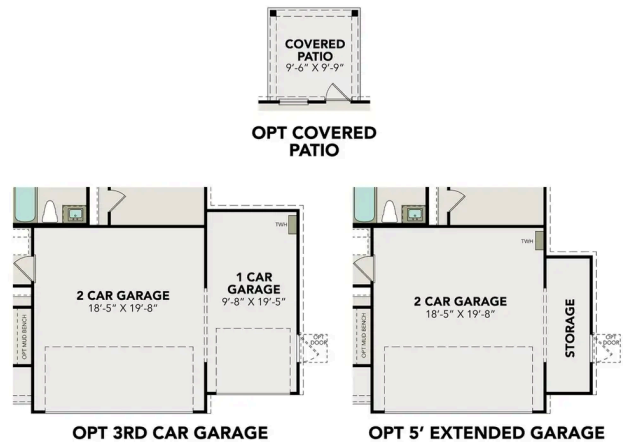
**BATHS**  
**2**

**SQ FT**  
**1,464**

**PARKING**  
**2**



**MAIN FLOOR PLAN**



**OPTIONS**





Caney Creek Place in Conroe, TX

Call (713) 766-6379  
DAVIDSONHOMESLLC.COM

## The Colorado F

### Exterior Options

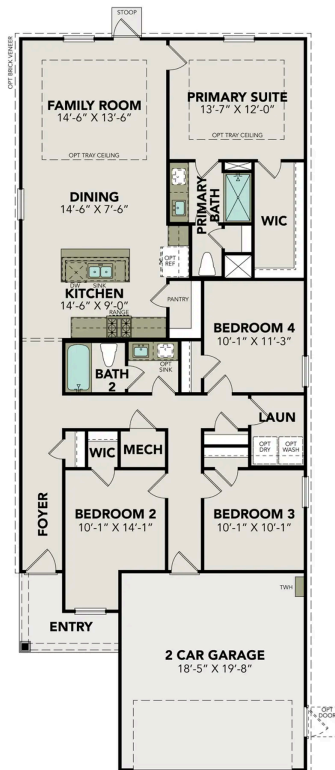


BEDS  
**4**

BATHS  
**2**

SQ FT  
**1,590**

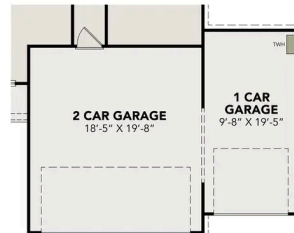
PARKING  
**2**



MAIN FLOOR PLAN



OPT COVERED PATIO



OPT 3RD CAR GARAGE



OPT 5' EXTENDED GARAGE

OPTIONS



# The Trinity F

## Exterior Options

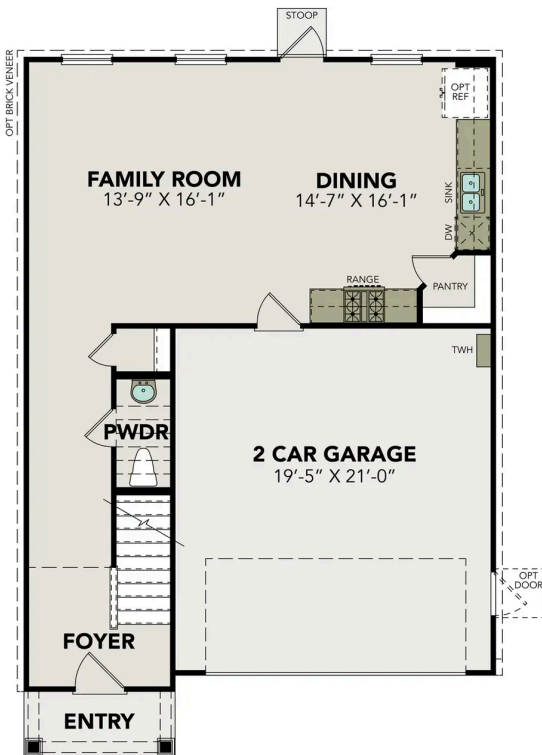


**BEDS**  
**4**

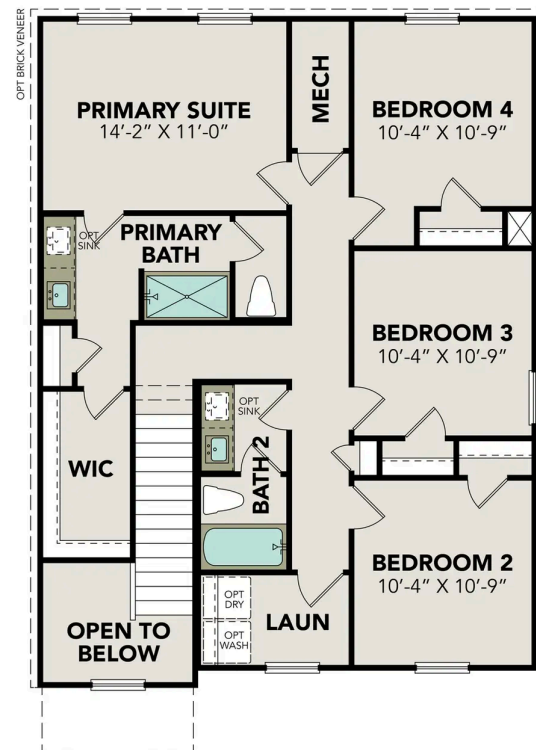
**BATHS**  
**2.5**

**SQ FT**  
**1,708**

**PARKING**  
**2**



**MAIN FLOOR PLAN**



**UPPER FLOOR PLAN**

## The Trinity F

Welcome to The Trinity! This two-story home is ready to be yours! The main floor features an open concept, eat-in kitchen that overlooks the spacious family room. Upstairs, you'll find the primary suite with a large walk-in closet. There are three additional bedrooms upstairs as well as another bathroom and laundry. This floor plan also includes a two-car garage.

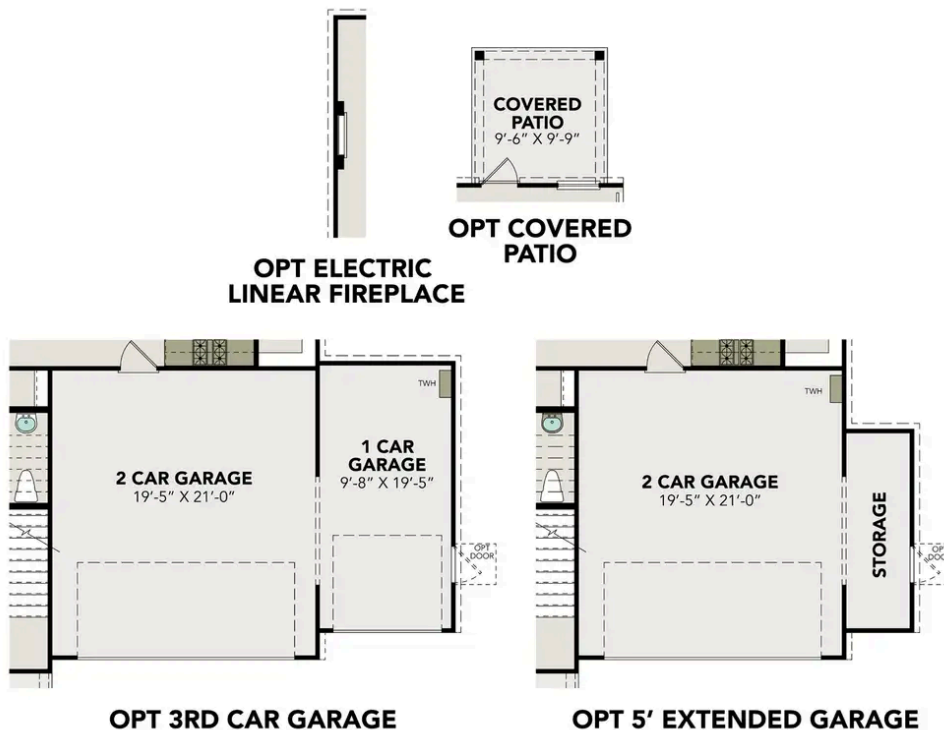
Make it your own with The Trinity's flexible floor plan. From additional garage space to a covered patio, you've got every opportunity to make The Trinity your dream home. Just know that offerings vary by location, so please discuss our standard features and upgrade options with your community's agent.

BEDS  
**4**

BATHS  
**2.5**

SQ FT  
**1,708**

GARAGE  
**2**



### OPTIONS



# The Blanco F

## Exterior Options



**BEDS**  
**4**

**BATHS**  
**2.5**

**SQ FT**  
**1,843**

**PARKING**  
**2**



**MAIN FLOOR PLAN**



**UPPER FLOOR PLAN**

## The Blanco F

Welcome to The Blanco! This two-story home makes great use of space and amenities. On the main floor, you will find an open kitchen and family area as well as a mud room and laundry off the two-car garage. The primary suite is also on the main floor and features a large walk-in closet. Upstairs, there are three more bedrooms as well as an additional bathroom and cozy loft space.

Make it your own with The Blanco's flexible floor plan. From additional garage space to a covered patio, you've got every opportunity to make The Blanco your dream home. Just know that offerings vary by location, so please discuss our standard features and upgrade options with your community's agent.

BEDS  
**4**

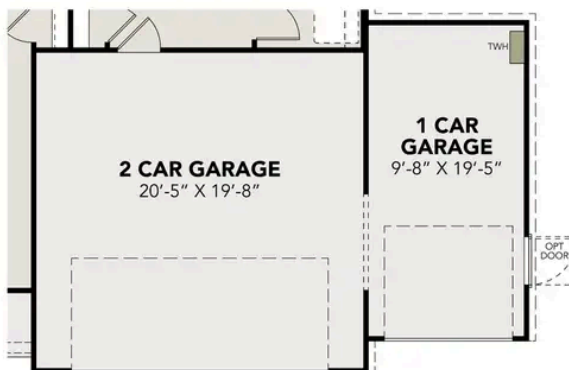
BATHS  
**2.5**

SQ FT  
**1,843**

GARAGE  
**2**



**OPT COVERED  
PATIO**



**OPT 3RD CAR GARAGE**



**OPT 5' EXTENDED GARAGE**

### OPTIONS

# The Sabine F

## Exterior Options

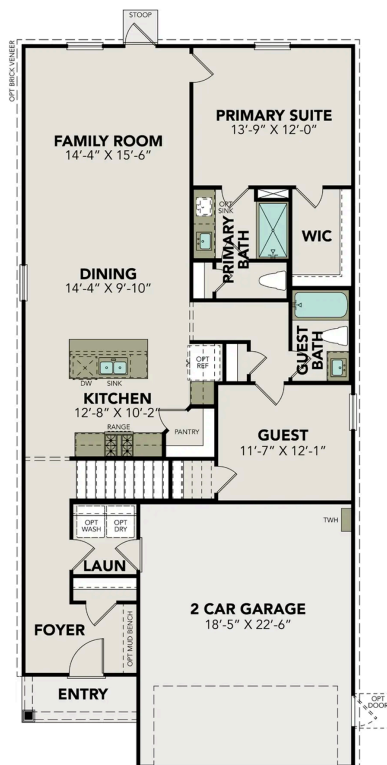


**BEDS**  
**4**

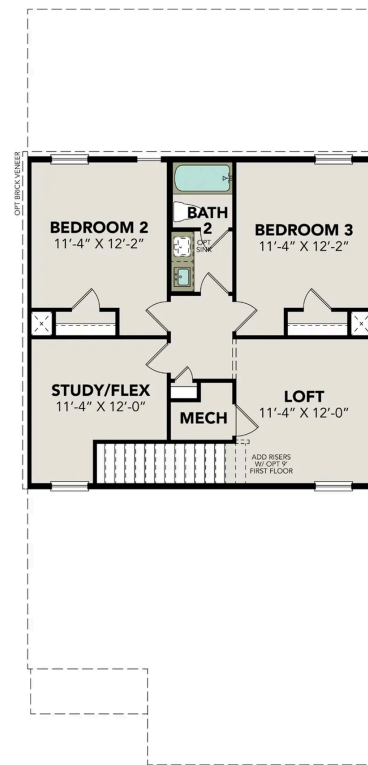
**BATHS**  
**3**

**SQ FT**  
**2,082**

**PARKING**  
**2**



**MAIN FLOOR PLAN**



**UPPER FLOOR PLAN**



## The Sabine F

Welcome to The Sabine! This two-story home is ready for anything with its great layout and modern touches. On the main floor, you'll find an open concept family and kitchen area as well as a guest room and bathroom. The primary suite is also on the main floor and has a large walk-in closet. Upstairs, there are two more bedrooms and additional bathroom plus a loft and a study/flex space.

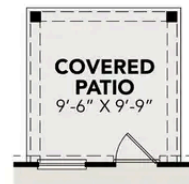
Make it your own with The Sabine's flexible floor plan. From additional garage space to a covered patio, you've got every opportunity to make The Sabine your dream home. Just know that offerings vary by location, so please discuss our standard features and upgrade options with your community's agent.

BEDS  
**4**

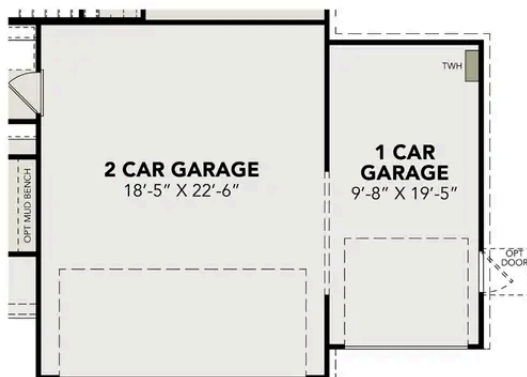
BATHS  
**3**

SQ FT  
**2,082**

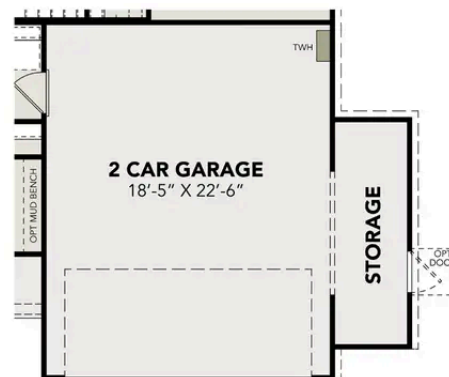
GARAGE  
**2**



**OPT COVERED PATIO**



**OPT 3RD CAR GARAGE**



**OPT 5' EXTENDED GARAGE**

**OPTIONS**

# The Brazos F

## Exterior Options

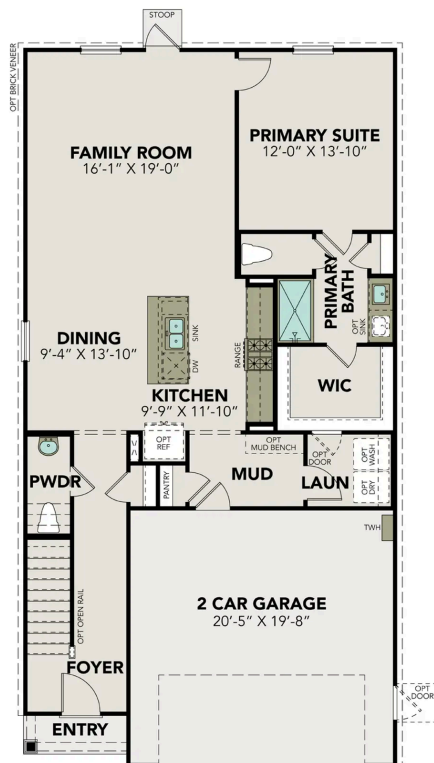


**BEDS**  
**5**

**BATHS**  
**2.5**

**SQ FT**  
**2,201**

**PARKING**  
**2**



**MAIN FLOOR PLAN**



**UPPER FLOOR PLAN**

## The Brazos F

Welcome to The Brazos! This two-story home is ready to welcome you home! You'll find an open concept family and kitchen area on the main floor as well as a powder room, mudroom and laundry off the two-car garage. The primary suite is also on the main floor and boasts a large walk-in closet. There are four additional bedrooms upstairs along with a bathroom and loft area.

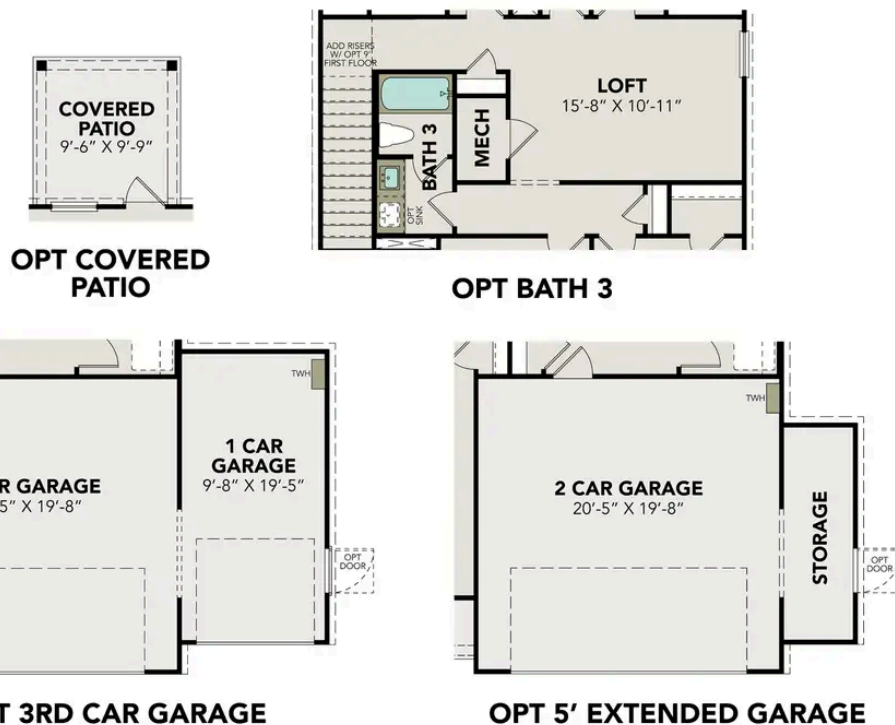
Make it your own with The Brazos' flexible floor plan. From an additional bathroom or added garage space to a covered patio, you've got every opportunity to make The Brazos your dream home. Just know that offerings vary by location, so please discuss our standard features and upgrade options with your community's agent.

BEDS  
**5**

BATHS  
**2.5**

SQ FT  
**2,201**

GARAGE  
**2**



### OPTIONS



# The San Marcos F

## Exterior Options

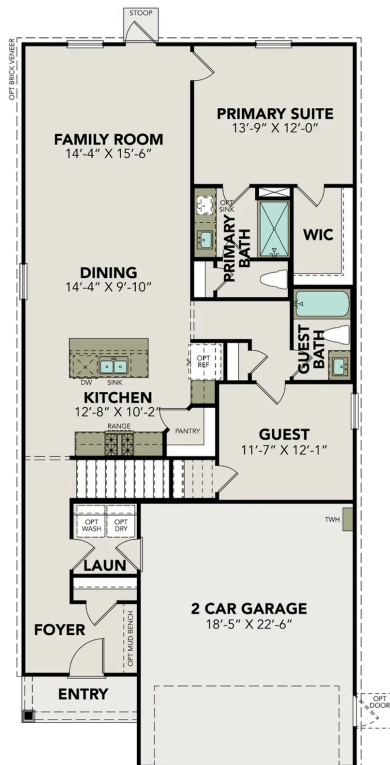


**BEDS**  
**5**

**BATHS**  
**3**

**SQ FT**  
**2,438**

**PARKING**  
**2**



**MAIN FLOOR PLAN**



**UPPER FLOOR PLAN**

## The San Marcos F

Welcome to The San Marcos, a two-story home perfect for any family! On the main floor, you can enjoy an open concept family and kitchen area that includes a spacious pantry. The primary suite is on the main floor along with a guest room and bathroom. Upstairs, there are three additional bedrooms as well as another bathroom and large loft space. Each bedroom has great storage space with large walk-in closets.

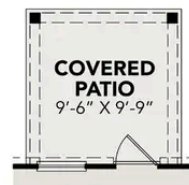
Make it your own with The San Marcos' flexible floor plan. From additional garage space to a covered patio, you've got every opportunity to make The San Marcos your dream home. Just know that offerings vary by location, so please discuss our standard features and upgrade options with your community's agent.

BEDS  
**5**

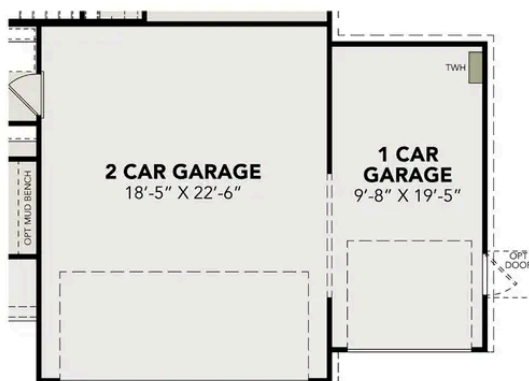
BATHS  
**3**

SQ FT  
**2,438**

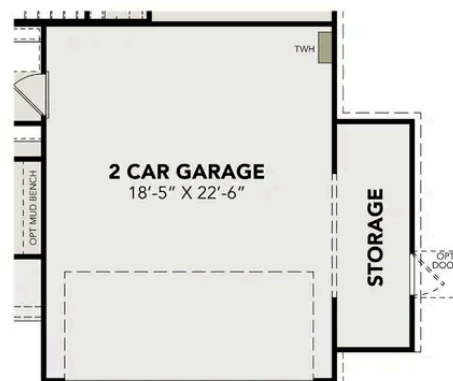
GARAGE  
**2**



**OPT COVERED PATIO**



**OPT 3RD CAR GARAGE**



**OPT 5' EXTENDED GARAGE**

### OPTIONS