

FUQUAY-VARINA, NC

DAVIDSONHOMESLLC.COM

Bentwinds

BY DAVIDSON HOMES

Welcome to Bentwinds, where luxury meets convenience in the heart of Wake County. We're proud to offer 5 exclusive homesites in this stunning community, featuring three of our most popular floor plans, the Magnolia, Cypress and Hickory.

Local Schools

Ballentine Elementary
Herbert Akins Road Middle
Willow Spring High



COMMUNITY ADDRESS

6529 Sunset Lake Road

FLOOR PLANS

01

Copyright 2024 Davidson Homes LLC | All Rights Reserved | Davidson Homes is a leading builder of quality new homes across the Southeast. Davidson Homes reserves the right to adjust items listed without prior notice or obligation. Such items may include, but are not limited to, options, included features and community information, pricing, amenities, square footage, terms or availability. Features, options, floor plans, elevations, colors, dimensions and photographs are for illustration purposes and may vary from homes built. Please see your community specialist for details. Equal housing lender.



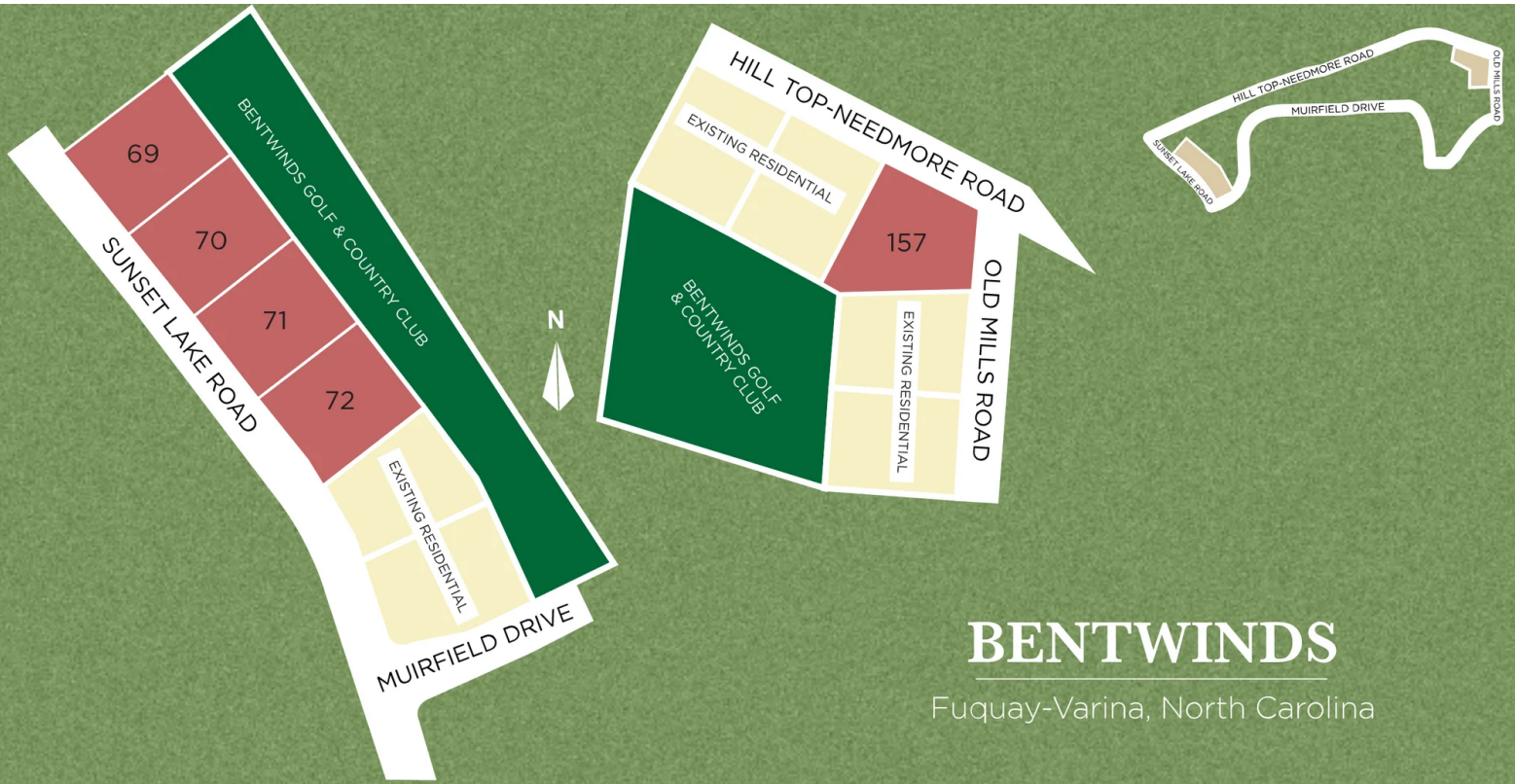


BENTWINDS | FUQUAY-VARINA, NC

Community Homesite Map

(984) 206-3587

DAVIDSONHOMESLLC.COM



BENTWINDS

Fuquay-Varina, North Carolina





BENTWINDS | FUQUAY-VARINA, NC

(984) 206-3587
DAVIDSONHOMESLLC.COM

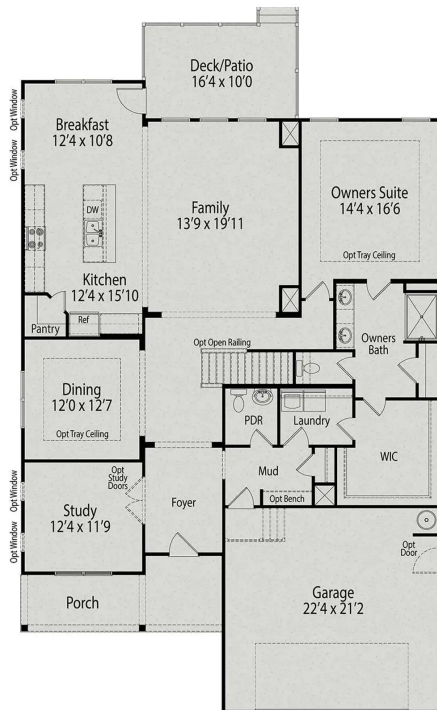
The Cypress B



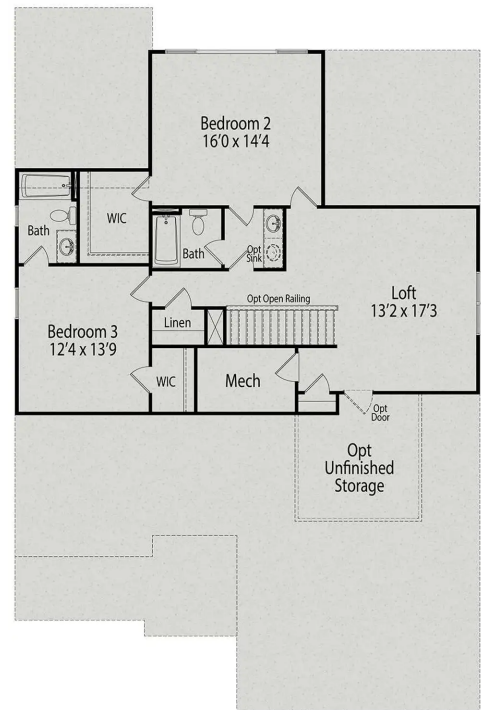
EXTERIOR OPTIONS



BEDS	BATHS	SQ FT.	GARAGE
4	3.5	3,021	2



MAIN FLOOR PLAN



UPPER FLOOR PLAN

1-2 of 4

Copyright 2024 Davidson Homes LLC | All Rights Reserved | Davidson Homes is a leading builder of quality new homes across the Southeast. Davidson Homes reserves the right to adjust items listed without prior notice or obligation. Such items may include, but are not limited to, options, included features and community information, pricing, amenities, square footage, terms or availability. Features, options, floor plans, elevations, colors, dimensions and photographs are for illustration purposes and may vary from homes built. Please see your community specialist for details. Equal housing lender. Last updated 02/06/2023.



The Cypress B

Welcome to The Cypress! The expansive front porch welcomes you into the foyer, past the study and formal dining room into the spacious open-concept kitchen and family room. This floor plan features a convenient first-floor owners suite with an impressive ensuite bath and a spacious closet connected to the home's laundry room. Upstairs, you'll find a versatile loft area and two more bedrooms, giving everyone their own space!

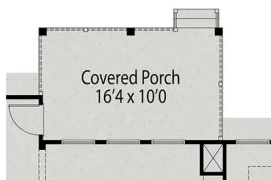
Make it your own with The Cypress' flexible floor plan! Offerings vary by location, please discuss your options with our New Home Consultant.

BEDS
4

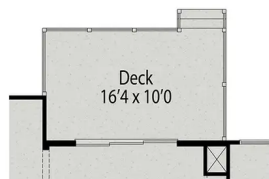
BATHS
3.5

SQ FT.
3,021

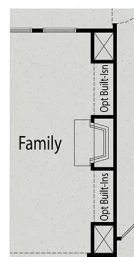
GARAGE
2



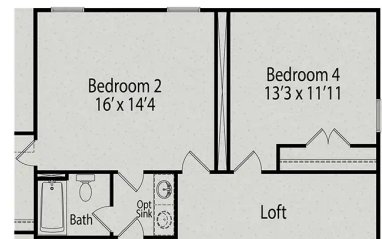
**OPTIONAL COVERED PORCH OR
OPTIONAL SCREENED PORCH**



**OPTIONAL TRIPLE SLIDER
AT FAMILY ROOM**



**OPTIONAL
FIREPLACE**



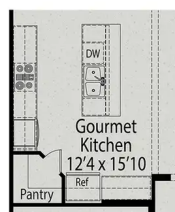
OPTIONAL BEDROOM 4



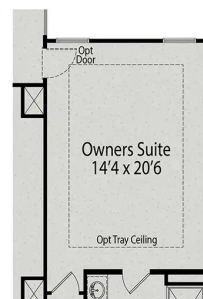
**OPTIONAL
SPA SHOWER**



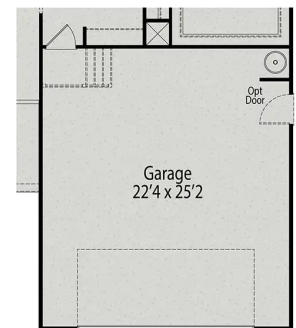
**OPTIONAL
DELUXE
OWNERS BATH**



**OPTIONAL
GOURMET KITCHEN**



**OPTIONAL EXTENDED
OWNER'S SUITE**



**OPTIONAL 4' GARAGE
EXTENSION**

PLAN OPTIONS

PLAN OPTIONS

3-4 of 4