

# Gregory Village

Davidson Homes in Lillington, NC

Discover Gregory Village, our latest Lillington, NC new construction community offering attractive housing options! We're currently building single family homes that are modern, spacious, and designed for comfort. Also this community features luxury new construction townhomes that are perfect for those who desire community living with a touch of personal space.

## Local Schools

Lillington-Shawtown Elem...  
Harnett Central Middle Sch...  
Harnett Central High



Community Address

30 Village Edge Drive

New Homes

11

Floor Plans

09

Homes from the

\$270s

Copyright 2024 Davidson Homes LLC | All Rights Reserved | Davidson Homes is a leading builder of quality new homes across the Southeast. Davidson Homes reserves the right to adjust items listed without prior notice or obligation. Such items may include, but are not limited to, options, included features and community information, pricing, amenities, square footage, terms or availability. Features, options, floor plans, elevations, colors, dimensions and photographs are for illustration purposes and may vary from homes built. Please see your community specialist for details. Equal housing lender. Last Updated 04/25/2024.





## Gregory Village in Lillington, NC

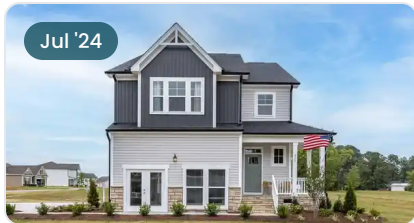
# Quick Move-In Homes

Matthew Carr . & Alicia G.  
Call (919) 849-3744

UPDATED  
04/25/2024

HOMES  
11

COMMUNITY ADDRESS  
30 Village Edge Drive



Jul '24

**\$379,000**  
5 Beds 4 Baths 2,517 Sq Ft  
158 Gregory Village Drive | #2  
The Adalynn A Plan



Jul '24

**\$364,000**  
3 Beds 2.5 Baths 2,020 Sq Ft  
142 Gregory Village Drive | #1  
The Grace C Plan



Jul '24

**\$369,000**  
4 Beds 3.5 Baths 2,278 Sq Ft  
166 Gregory Village Drive | #3  
The Gavin B Plan



Jul '24

**\$344,000**  
3 Beds 2.5 Baths 2,020 Sq Ft  
182 Gregory Village Drive | #5  
The Grace A Plan



Jul '24

**\$389,000**  
4 Beds 3 Baths 2,870 Sq Ft  
174 Gregory Village Drive | #4  
The Preston B Plan





## Gregory Village in Lillington, NC

# Quick Move-In Homes

Matthew Carr . & Alicia G.  
Call (919) 849-3744

UPDATED HOMES  
04/25/2024 11

COMMUNITY ADDRESS  
30 Village Edge Drive



**\$272,000**  
3 Beds 2.5 Baths 1,713 Sq Ft  
45 Village Edge Drive | #106  
The Warren Plan



**\$288,000**  
3 Beds 2.5 Baths 1,713 Sq Ft  
63 Village Edge Drive | #103  
The Graham Plan



**\$269,000**  
3 Beds 2.5 Baths 1,713 Sq Ft  
67 Village Edge Drive | #102  
The Warren Plan



**\$286,000**  
3 Beds 2.5 Baths 1,713 Sq Ft  
71 Village Edge Drive | #101  
The Graham Plan



**\$326,800**  
3 Beds 2.5 Baths 1,899 Sq Ft  
11 Fairwinds Drive | #82  
The Wake Plan



**\$325,000**  
3 Beds 2.5 Baths 1,812 Sq Ft  
21 Fairwinds Drive | #79  
The Durham Plan







Gregory Village in Lillington, NC

# Community Homesite Map

Matthew Carr . & Alicia G.

Call (919) 849-3744

## GREGORY VILLAGE

Lillington, North Carolina

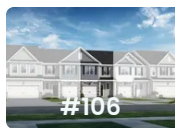


MOVE-IN READY QUICK MOVE-IN COMING SOON AVAILABLE SOLD

## Featured Homes for Sale



**The Adalynn A**  
158 Gregory Village Drive  
**\$379,000**



**The Warren**  
45 Village Edge Drive  
**\$272,000**



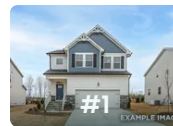
**The Graham**  
63 Village Edge Drive  
**\$288,000**



**The Warren**  
67 Village Edge Drive  
**\$269,000**



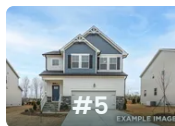
**The Graham**  
71 Village Edge Drive  
**\$286,000**



**The Grace C**  
142 Gregory Village Drive  
**\$364,000**



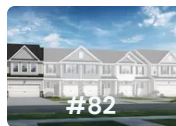
**The Gavin B**  
166 Gregory Village Drive  
**\$369,000**



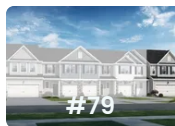
**The Grace A**  
182 Gregory Village Drive  
**\$344,000**



**The Preston B**  
174 Gregory Village Drive  
**\$389,000**



**The Wake**  
11 Fairwinds Drive  
**\$326,800**



**The Durham**  
21 Fairwinds Drive  
**\$325,000**

Copyright 2024 Davidson Homes LLC | All Rights Reserved | Davidson Homes is a leading builder of quality new homes across the Southeast. Davidson Homes reserves the right to adjust items listed without prior notice or obligation. Such items may include, but are not limited to, options, included features and community information, pricing, amenities, square footage, terms or availability. Features, options, floor plans, elevations, colors, dimensions and photographs are for illustration purposes and may vary from homes built. Please see your community specialist for details. Equal housing lender.





# The Carter A

## Exterior Options

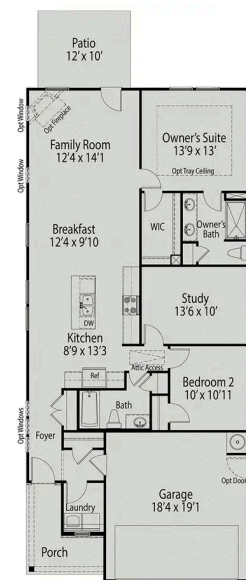


**BEDS**  
**2**

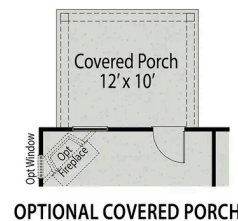
**BATHS**  
**2**

**SQ FT**  
**1,409**

**PARKING**  
**2**



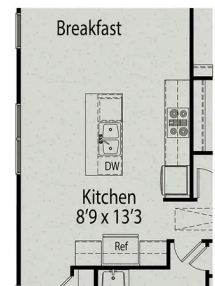
**MAIN FLOOR PLAN**



**OPTIONAL COVERED PORCH**



**OPTIONAL SCREENED PORCH**



**OPTIONAL GOURMET KITCHEN**

**OPTIONS**



Gregory Village in Lillington, NC

Call (919) 849-3744  
DAVIDSONHOMESLLC.COM

## The Carter A

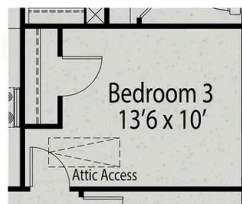
Charming single-story ranch home with welcoming front porch. Potential for as many as three bedrooms all on one level. Kitchen complete with oversized island and ample cabinetry. Entertaining is made easy with this open design.

BEDS  
**2**

BATHS  
**2**

SQ FT  
**1,409**

GARAGE  
**2**



OPTIONAL BEDROOM 3



OPTIONAL SPA SHOWER

### OPTIONS



# The Grace A



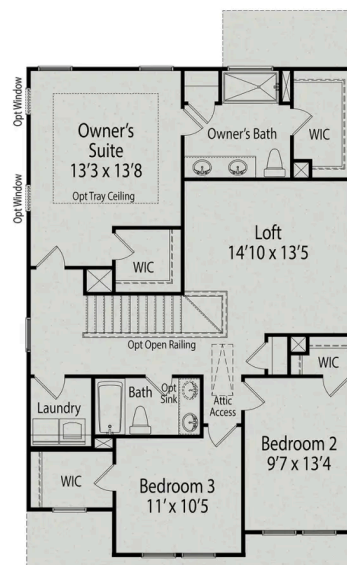
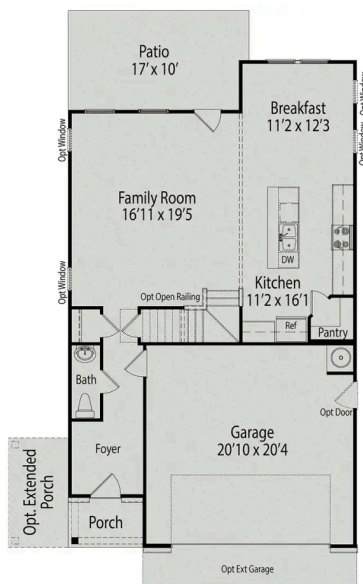
**BEDS**  
**3**

**BATHS**  
**2.5**

**SQ FT**  
**2,020**

**PARKING**  
**2**

## Exterior Options





## The Grace A

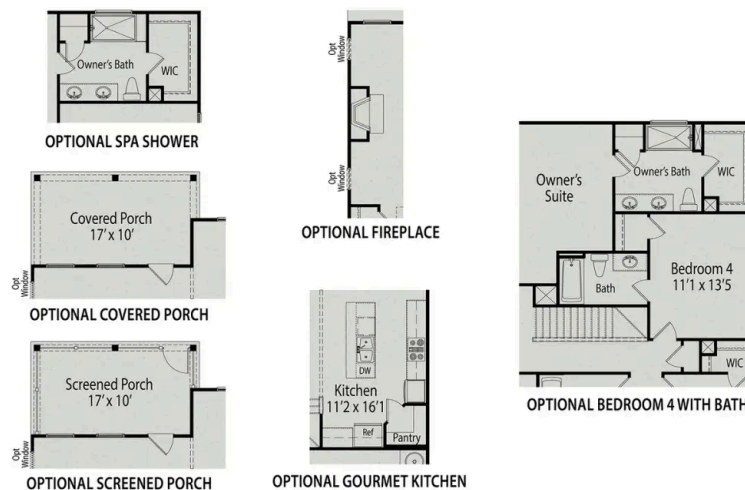
Show off your style with the Grace's open-concept floor plan. The family room is perfect for entertaining. The kitchen is complete with a cooks island, an overhang for barstools, a spacious corner pantry, and a cozy breakfast nook. The oversized patio offers enjoyable outdoor space. The private owner's suite is tucked away from the secondary bedrooms. Prefer four bedrooms instead of three? If so, check out the optional bedroom four with an additional bath option. Make this home your own!

BEDS  
**3**

BATHS  
**2.5**

SQ FT  
**2,020**

GARAGE  
**2**



### OPTIONS

# The Gavin A



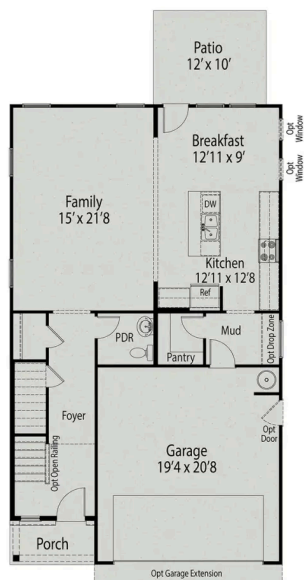
**BEDS**  
**3**

**BATHS**  
**2.5**

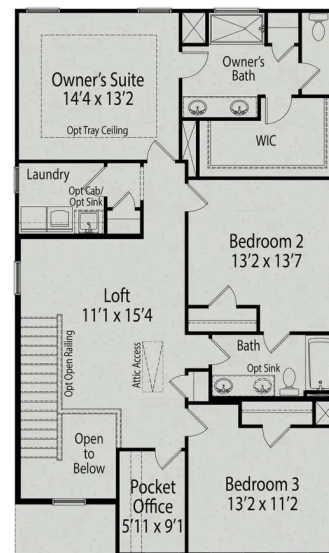
**SQ FT**  
**2,278**

**PARKING**  
**2**

## Exterior Options



**MAIN FLOOR PLAN**



**UPPER FLOOR PLAN**

## The Gavin A

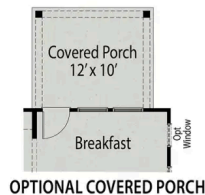
Looking for space that works, this design is for you! This two-story plan offers as much space as possible. Open main living area offering ample light and smooth traffic flow. The kitchen is spectacular offering plenty of cabinetry and the island is the perfect size. Mudroom and pantry directly off the kitchen for ease of entry and access. Prefer four bedrooms instead of three, check out the optional bedroom four with bath three option, a great way to create the space that fits your needs. Don't forget the pocket office, yes, we made space for that!

BEDS  
**3**

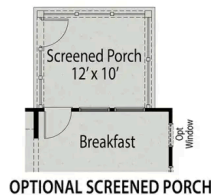
BATHS  
**2.5**

SQ FT  
**2,278**

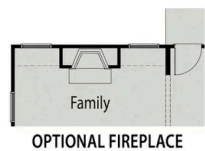
GARAGE  
**2**



OPTIONAL COVERED PORCH



OPTIONAL SCREENED PORCH



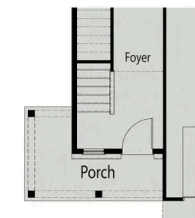
OPTIONAL FIREPLACE



OPTIONAL SPA SHOWER

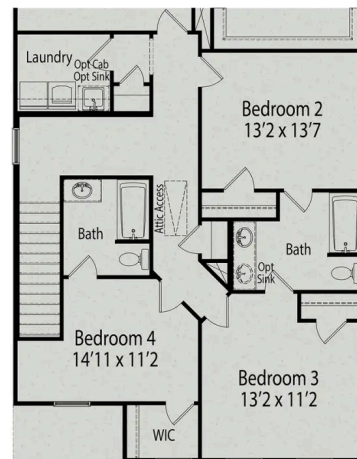


OPTIONAL GOURMET KITCHEN



OPTIONAL EXTENDED PORCH

### OPTIONS



OPTIONAL BEDROOM 4 WITH BATH  
AND ALTERNATE BEDROOM 2, 3 AND BATH

### OPTIONS



# The Adalynn A



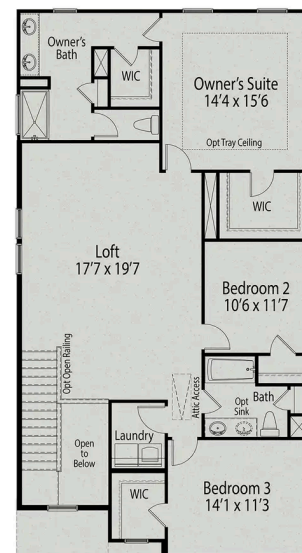
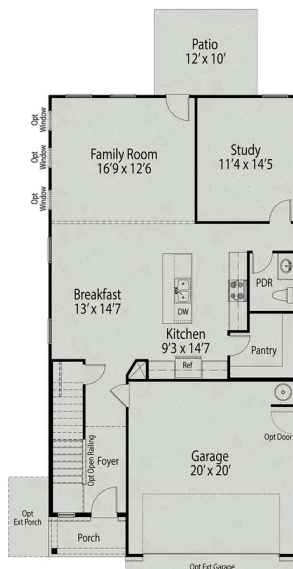
**BEDS**  
**3**

**BATHS**  
**2.5**

**SQ FT**  
**2,517**

**PARKING**  
**2**

## Exterior Options



# The Adalynn A

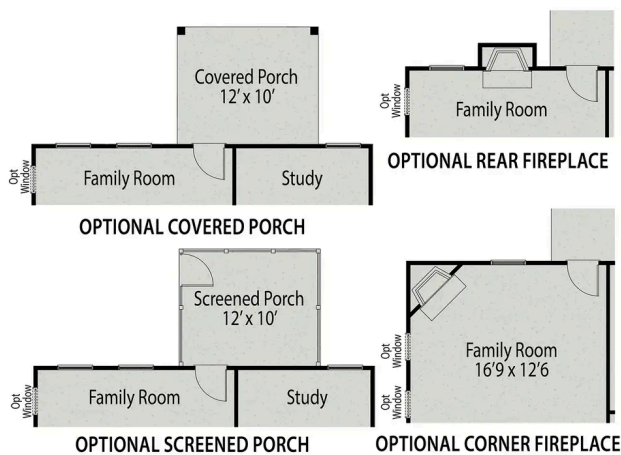
Two-story design offering flexibility on both levels! Open floor plan with all main areas of the home coming together as one. The spacious pantry off the kitchen is perfect for all your storage needs, island offers additional seating and prepping area. Prefer a double wall oven, we have that, check out our Gourmet Kitchen option. Our popular Guest Suite option is available on the main level replacing the study. This design offers up to five bedrooms without losing the versatility of a loft area.

BEDS  
**3**

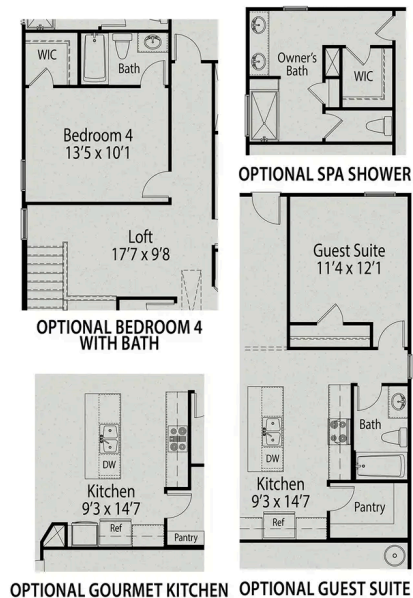
BATHS  
**2.5**

SQ FT  
**2,517**

GARAGE  
**2**



**OPTIONS**



**OPTIONS**

# The Preston A

## Exterior Options

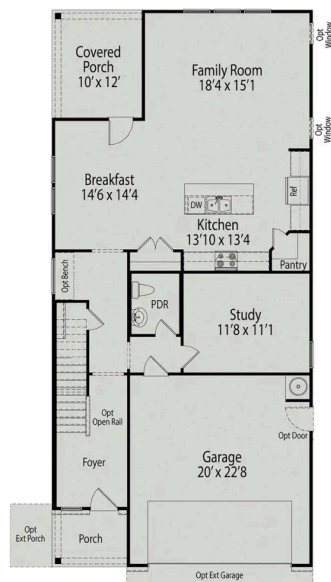


**BEDS**  
**3**

**BATHS**  
**2.5**

**SQ FT**  
**2,870**

**PARKING**  
**2**



**MAIN FLOOR PLAN**



**UPPER FLOOR PLAN**



## The Preston A

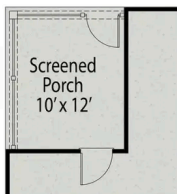
One of our most spacious value oriented two-story designs. Corner kitchen with ample space in the pantry, oversized island, and cabinets abound. The popular guest suite option is available on the main level replacing the study. The second floor offers you plenty of versatility, the oversized loft can be transformed into an additional bedroom and flex space creating a less open area with more defined space. Check out the double-door entry into the private owner's suite, the spacious closet offers more than enough room and the owner's bath features separate vanities.

BEDS  
**3**

BATHS  
**2.5**

SQ FT  
**2,870**

GARAGE  
**2**



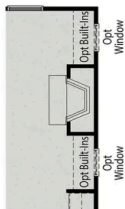
OPTIONAL SCREENED PORCH



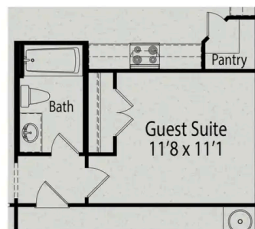
OPTIONAL GOURMET KITCHEN



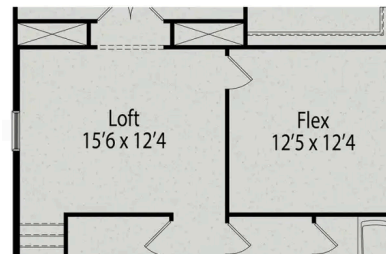
OPTIONAL SPA SHOWER



OPTIONAL FIREPLACE



OPTIONAL GUEST SUITE WITH BATH



OPTIONAL FLEX

### OPTIONS

### OPTIONS

# The Warren



## Description

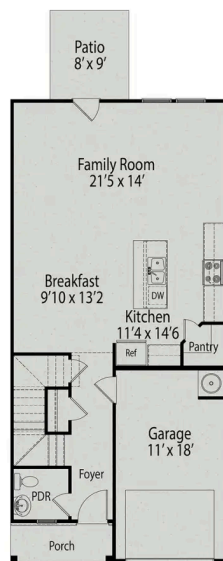
As you step into The Warren, you're greeted by a spacious foyer that leads to the stunning open-concept space that houses the breakfast area, family room, and kitchen. The breakfast area is cozy yet spacious, while the family room is a flexible area designed for comfort and relaxation.

**BEDS**  
**3**

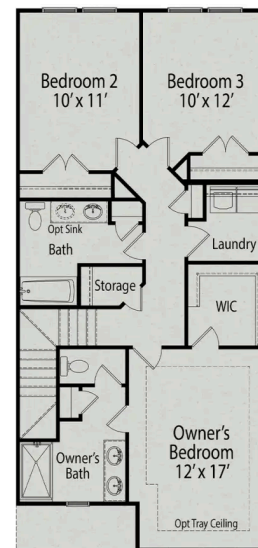
**BATHS**  
**2.5**

**SQ FT**  
**1,713**

**PARKING**  
**1**



**MAIN FLOOR PLAN**



**UPPER FLOOR PLAN**

## The Warren

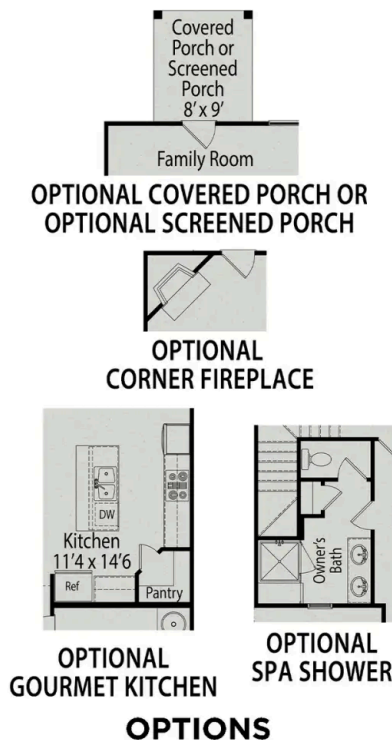
As you step into The Warren, you're greeted by a spacious foyer that leads to the stunning open-concept space that houses the breakfast area, family room, and kitchen. The breakfast area is cozy yet spacious, while the family room is a flexible area designed for comfort and relaxation. Just around the corner is a convenient one-car garage. Completing the main level is a lovely patio accessible through the family room, perfect for relaxing or enjoying a good book.

BEDS  
**3**

BATHS  
**2.5**

SQ FT  
**1,713**

GARAGE  
**1**





# The Graham



## Description

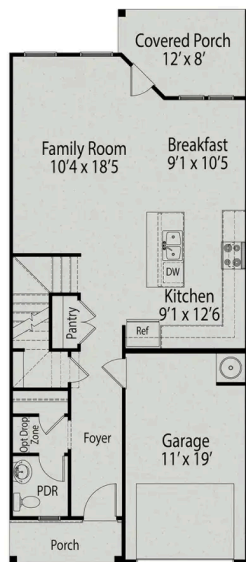
The Graham's family room is designed to be spacious and accommodating, making it the perfect space for relaxation and entertainment. This area seamlessly blends into the breakfast nook and kitchen.

**BEDS**  
**3**

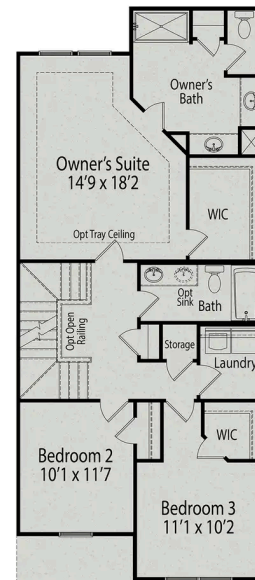
**BATHS**  
**2.5**

**SQ FT**  
**1,713**

**PARKING**  
**1**



**MAIN FLOOR PLAN**



**UPPER FLOOR PLAN**

## The Graham

The Graham's family room is designed to be spacious and accommodating, making it the perfect space for relaxation and entertainment. This area seamlessly blends into the breakfast nook and kitchen. The included covered porch is accessible from the family room and provides the perfect outdoor retreat for warm summer evenings or a leisurely morning cup of coffee. This plan also includes a convenient one-car garage.

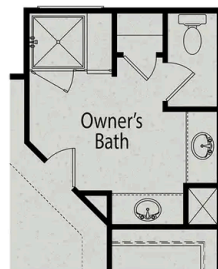
Moving to the second floor, the owner's suite's unique layout gives it a spacious yet cozy feel. In its ensuite bathroom, you'll find two separate sinks, providing plenty of personal space even on the busiest of mornings. Across the hallway are two additional bedrooms and an additional bathroom. The upper floor also hosts... the laundry room, eliminating the need to carry laundry up and down the stairs.

BEDS  
**3**

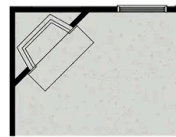
BATHS  
**2.5**

SQ FT  
**1,713**

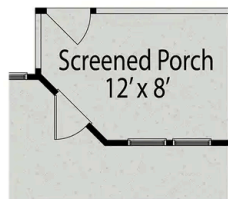
GARAGE  
**1**



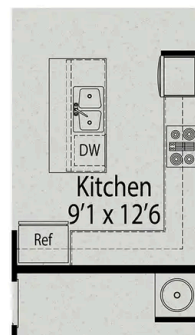
**OPTIONAL  
SPA SHOWER**



**OPTIONAL  
CORNER FIREPLACE**



**OPTIONAL  
SCREENED PORCH**



**OPTIONAL  
GOURMET KITCHEN**

### OPTIONS

# The Durham



## Description

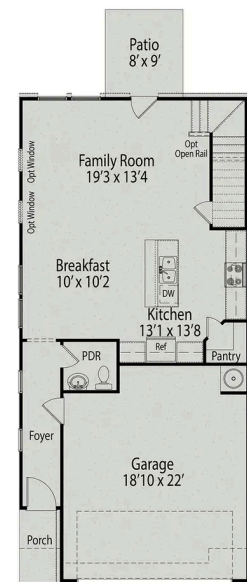
Welcome to the Durham! Inside this end-unit design, you're greeted by the expansive foyer hallway and open-concept family room flooded with natural light. The kitchen is a modern cook's dream, showcasing ample counter space and a breakfast area that's perfect for casual dining.

**BEDS**  
**3**

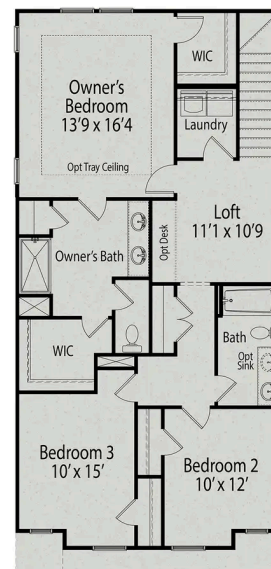
**BATHS**  
**2.5**

**SQ FT**  
**1,812**

**PARKING**  
**2**



**MAIN FLOOR PLAN**



**UPPER FLOOR PLAN**

## The Durham

Welcome to the Durham! Inside this end-unit design, you're greeted by the expansive foyer hallway and open-concept family room flooded with natural light. The kitchen is a modern cook's dream, showcasing ample counter space and a breakfast area that's perfect for casual dining. Just beyond the family room, the door opens onto a charming patio.

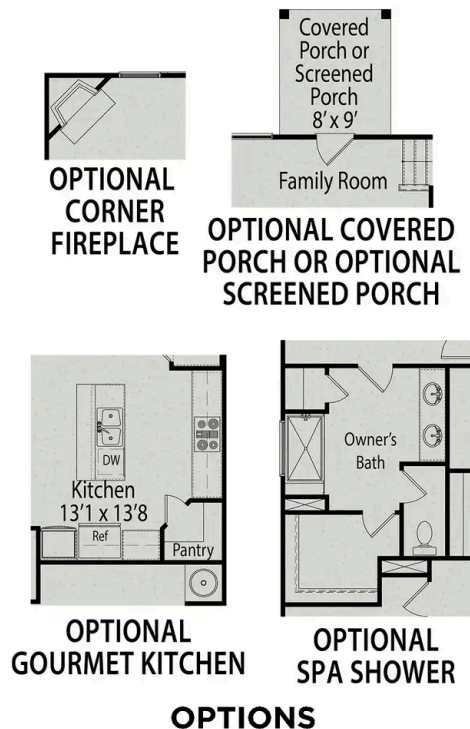
Heading upstairs, you'll find a flexible loft space, perfect for a playroom, office space, and more! The owner's bedroom provides a peaceful retreat with an ensuite bathroom, featuring a double vanity and spacious closet. Just down the hallway, two additional bedrooms offer extra living space. Speaking of space, this design also features a two-car garage!

BEDS  
**3**

BATHS  
**2.5**

SQ FT  
**1,812**

GARAGE  
**2**





# The Wake



## Description

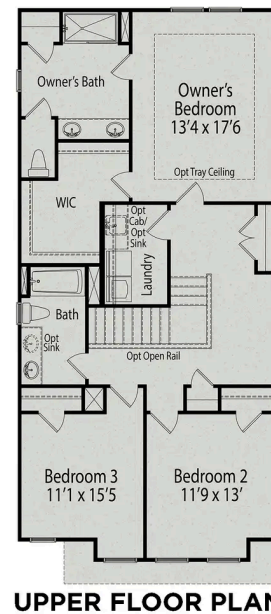
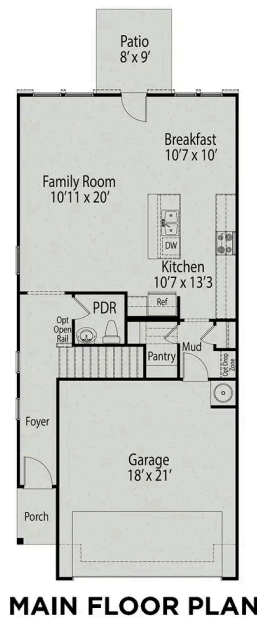
Through The Wake's foyer you'll discover a wide-open floor plan, featuring a spacious family room, dining room and chef-inspired kitchen with center island. With natural light filling the space from expansive windows, you'll love to spend your time entertaining or relaxing in the flexible space.

**BEDS**  
**3**

**BATHS**  
**2.5**

**SQ FT**  
**1,899**

**PARKING**  
**2**



## The Wake

Through The Wake's foyer you'll discover a wide-open floor plan, featuring a spacious family room, dining room and chef-inspired kitchen with center island. With natural light filling the space from expansive windows, you'll love to spend your time entertaining or relaxing in the flexible space. The outdoor patio provides the perfect outdoor retreat.

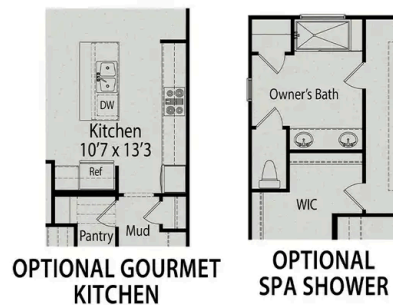
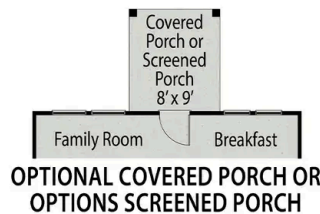
The Owners Suite resides on the upper level, featuring a spacious closet and a lovely Owners Bath with double vanity. The second level also features two additional spacious bedrooms, a bathroom, and convenient laundry room. This design also features a two-car garage.

BEDS  
**3**

BATHS  
**2.5**

SQ FT  
**1,899**

GARAGE  
**2**



### OPTIONS