

Ivy Hills

Davidson Homes in Toney, AL

Are you looking for a new home in a peaceful, beautiful area? Look no further than Ivy Hills, Toney, Alabama – the perfect place to call home! Ivy Hills offers something for everyone – from quiet country living to the convenience of city amenities. With the close proximity to Huntsville, you'll be able to take advantage of all the great attractions the city has to offer, including Facebook, Redstone Arsenal, and Aerojet Rocketdyne. Shopping and dining are just around the corner, and the nearby Harvest Square Nature Preserve and Wade Mountain offer plenty of outdoor activities, and a short commute to Research Park, HWY 53, and HWY 231/431.

Features

Great Public Schools

Local Schools

Madison County School Di...
Madison Cross Roads Ele...
Sparkman Middle
Sparkman High

Utilities

Electric: Huntsville Utilities
Water: Madison County



Community Address

127 Ivy Vine Dr.

New Homes

10

Floor Plans

07

Homes from the

\$280s

Copyright 2024 Davidson Homes LLC | All Rights Reserved | Davidson Homes is a leading builder of quality new homes across the Southeast. Davidson Homes reserves the right to adjust items listed without prior notice or obligation. Such items may include, but are not limited to, options, included features and community information, pricing, amenities, square footage, terms or availability. Features, options, floor plans, elevations, colors, dimensions and photographs are for illustration purposes and may vary from homes built. Please see your community specialist for details. Equal housing lender. Last Updated 04/16/2024.





Ivy Hills in Toney, AL

Quick Move-In Homes

Kristin Bjerke
Call (256) 422-0904



SPRING SPLURGE

Save **30%** on
Design Upgrades!

PLUS, ENJOY
\$5,000*
TO USE AS YOU CHOOSE!

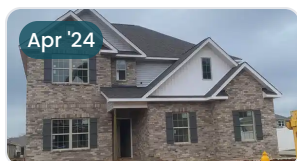
LEARN MORE →

*See link for terms/conditions.

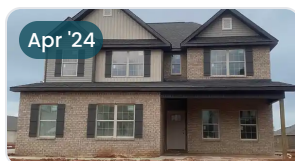
UPDATED
04/16/2024

HOMES
10

COMMUNITY ADDRESS
127 Ivy Vine Dr.



\$429,657
4 Bd 3.5 Ba 2,769 SF
122 Ivy Vine Drive | #238
The Chelsea A - Side Entry P...



\$421,302
4 Bd 3 Ba 2,452 SF
124 Ivy Vine Drive | #237
The Shelby B - Side Entry Pl...



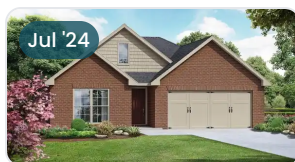
\$415,006
4 Bd 3 Ba 2,452 SF
123 Ivy Vine Drive | #239
The Shelby C - Side Entry Pl...



\$436,826
4 Bd 3.5 Ba 2,769 SF
125 Ivy Vine Drive | #240
The Chelsea C - Side Entry P...



\$340,155
4 Bd 2 Ba 1,964 SF
132 Ivy Vine Drive | #231
The Daphne D Plan



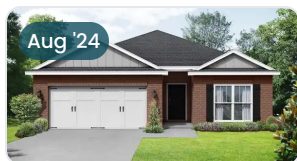
\$319,684
3 Bd 2 Ba 1,620 SF
134 Ivy Vine Drive | #232
The Franklin C Plan



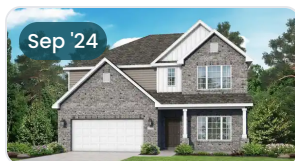
\$304,044
3 Bd 2 Ba 1,484 SF
132 Ivy Vine Drive | #233
The Asheville C Plan



\$348,024
4 Bd 3 Ba 1,964 SF
133 Ivy Vine Drive | #244
The Daphne C Plan



\$358,916
4 Bd 3 Ba 2,136 SF
135 Ivy Vine Drive | #245
The Everett B Plan



\$399,973
4 Bd 3.5 Ba 2,769 SF
137 Ivy Vine Drive | #246
The Chelsea A Plan





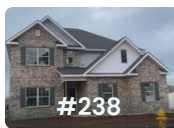
Ivy Hills in Toney, AL

Community Homesite Map

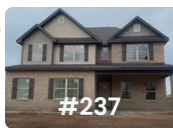
Kristin Bjerke
Call (256) 422-0904



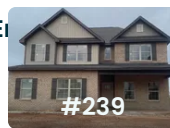
Featured Homes for Sale



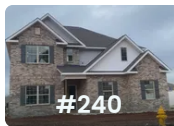
The Chelsea A - Side
122 Ivy Vine Drive
\$429,657



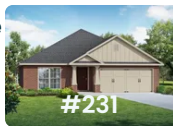
The Shelby B - Side Entry
124 Ivy Vine Drive
\$421,302



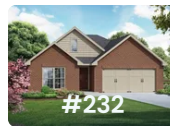
The Shelby C - Side Entry
123 Ivy Vine Drive
\$415,006



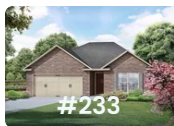
The Chelsea C - Side
125 Ivy Vine Drive
\$436,826



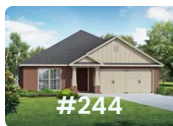
The Daphne D
136 Ivy Vine Drive
\$340,155



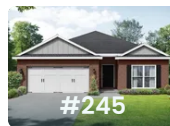
The Franklin C
134 Ivy Vine Drive
\$319,684



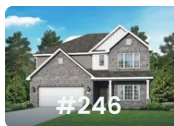
The Asheville C
132 Ivy Vine Drive
\$304,044



The Daphne C
133 Ivy Vine Drive
\$348,024



The Everett B
135 Ivy Vine Drive
\$358,916



The Chelsea A
137 Ivy Vine Drive
\$399,973

Copyright 2024 Davidson Homes LLC | All Rights Reserved | Davidson Homes is a leading builder of quality new homes across the Southeast. Davidson Homes reserves the right to adjust items listed without prior notice or obligation. Such items may include, but are not limited to, options, included features and community information, pricing, amenities, square footage, terms or availability. Features, options, floor plans, elevations, colors, dimensions and photographs are for illustration purposes and may vary from homes built. Please see your community specialist for details. Equal housing lender.



The Asheville C



Description

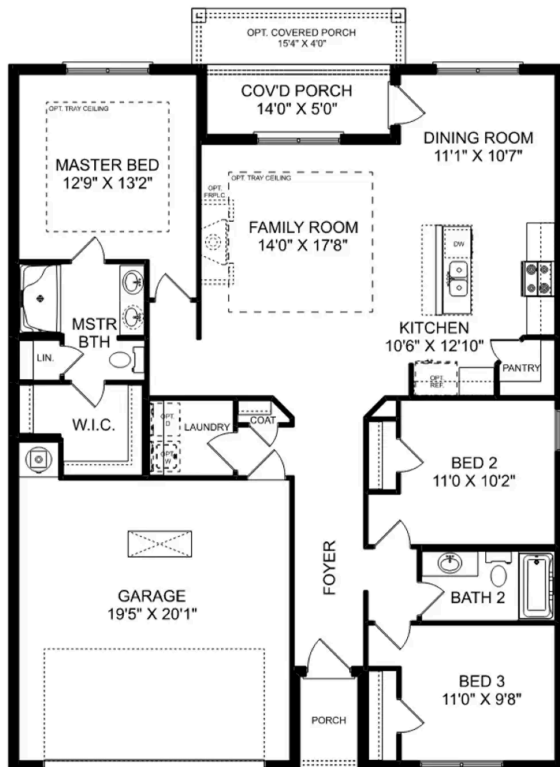
Discover the charm of one-level living with this open-concept home! From The Asheville's large, kitchen island overlooking the family room to its isolated Master Bedroom, we've designed this home with you in mind. The three bedrooms offer plenty of space for you and your guests.

BEDS
3

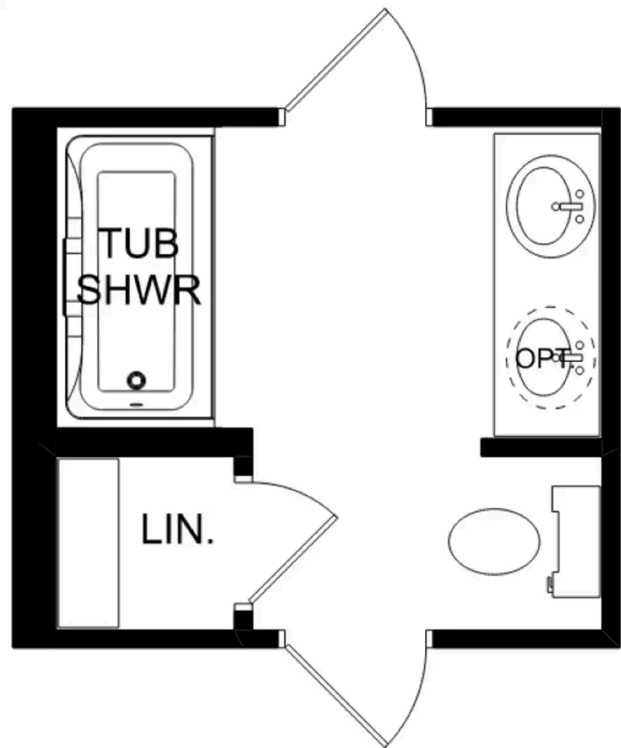
BATHS
2

SQ FT
1,484

PARKING
2



THE ASHEVILLE C



THE ASHEVILLE C OPTIONS

The Franklin C



Description

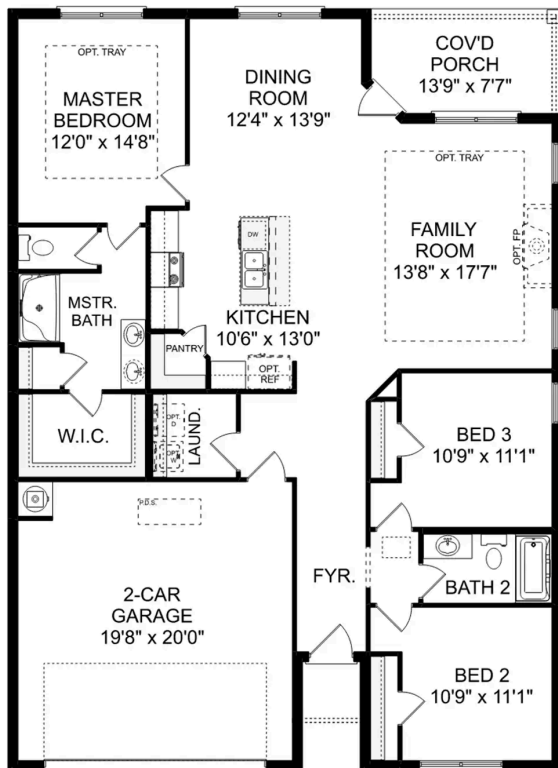
Within this cozy, one-level home lies a modern use of space. From the kitchen's large island to the family room's spacious open-concept, you're surrounded by owner-centric design.

BEDS
3

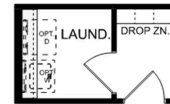
BATHS
2

SQ FT
1,620

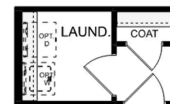
PARKING
2



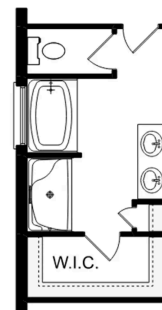
THE FRANKLIN C



OPT. DROP ZONE



OPT. COAT CLOSET



OPT. DELUXE MASTER BATH

THE FRANKLIN C OPTIONS

The Daphne



Description

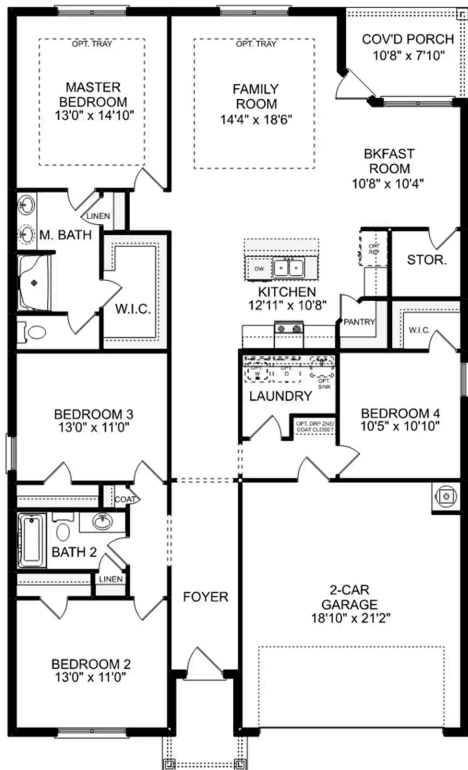
Show off your style with the Daphne's open-concept floor plan! Featuring tons of natural light, the family room is perfect for entertaining, and the home's kitchen features an adorable breakfast nook. The Master Suite offers plenty of space, and its walk-in closet has room to spare.

BEDS
4

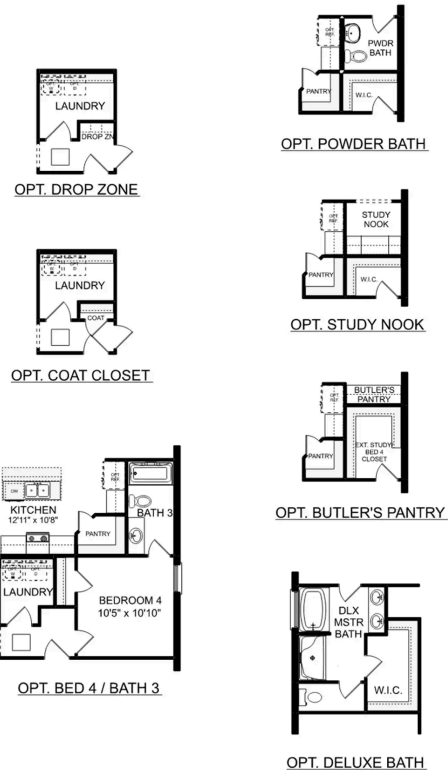
BATHS
2

SQ FT
1,964

PARKING
2



THE DAPHNE



THE DAPHNE OPTIONS

The Shelby A

Exterior Options

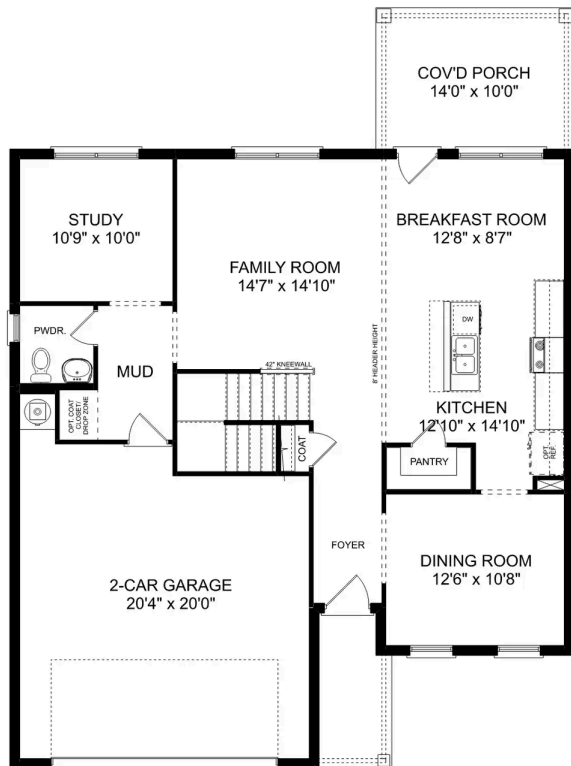


BEDS
3

BATHS
2.5

SQ FT
2,452

PARKING
2



MAIN FLOOR



UPPER FLOOR

The Shelby A

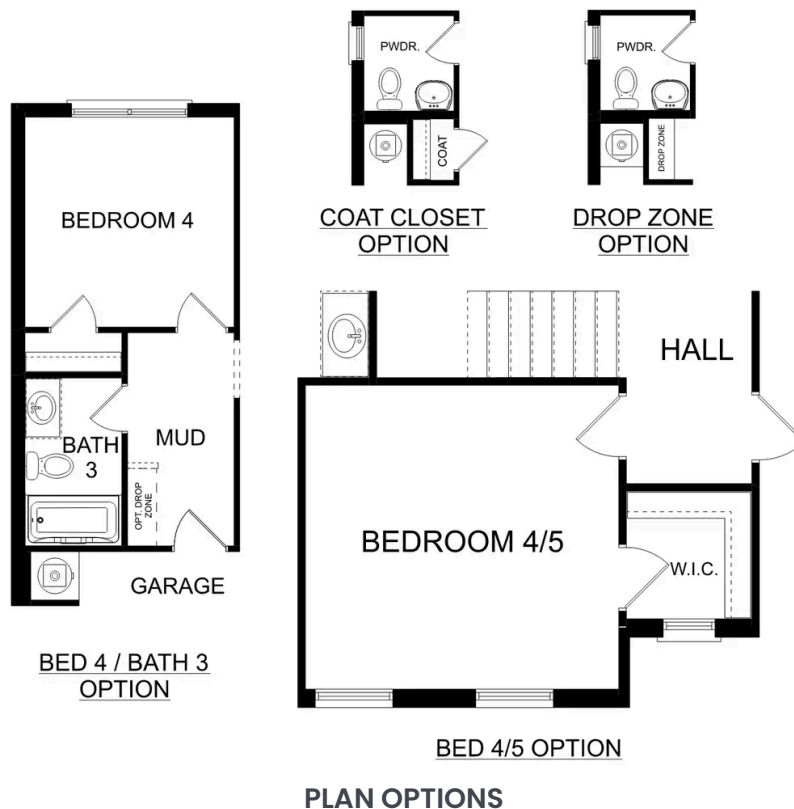
The Shelby welcomes you into a modern, open space, complete with a formal dining room and study. The kitchen overlooks an open-concept family room. The second floor features a spacious master bedroom with a large walk-in closet and master bath along with two additional bedrooms with ample walk-in closets of their own.

BEDS
3

BATHS
2.5

SQ FT
2,452

GARAGE
2



The Charleston D



Description

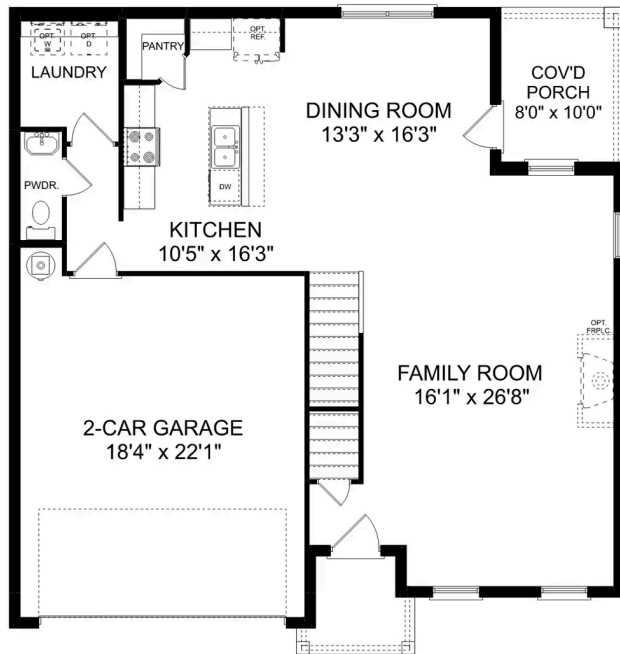
The sky's the limit with The Charleston's two-story layout and massive bonus room. Inside the home's brick exterior, the open-concept kitchen overlooks the huge family room. The Master Suite offers you a personal retreat – complete with large walk-in closet.

BEDS
4

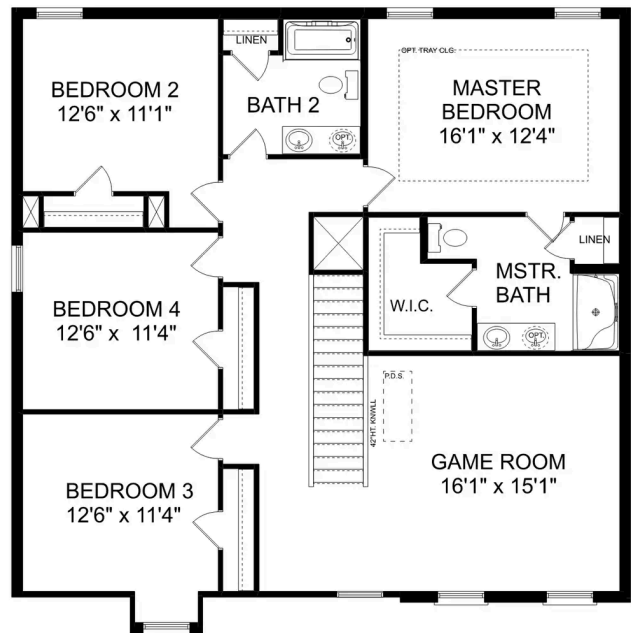
BATHS
2.5

SQ FT
2,505

PARKING
2



THE CHARLESTON D MAIN FLOOR



THE CHARLESTON D UPPER FLOOR

The Charleston D

The sky's the limit with The Charleston's two-story layout and massive bonus room. Inside the home's brick exterior, the open-concept kitchen overlooks the huge family room. The Master Suite offers you a personal retreat – complete with large walk-in closet. Whether you're looking for a game room or a fifth bedroom, the upstairs bonus room gives you all the flexibility you need. Make it your own with The Charleston's flexible floor plan! Just know that offerings vary by location, so please discuss our standard features and upgrade options with your community's agent.

BEDS
4

BATHS
2.5

SQ FT
2,505

GARAGE
2



THE CHARLESTON D OPTIONS



Ivy Hills in Toney, AL

Call (256) 422-0904
DAVIDSONHOMESLLC.COM

The Chelsea A

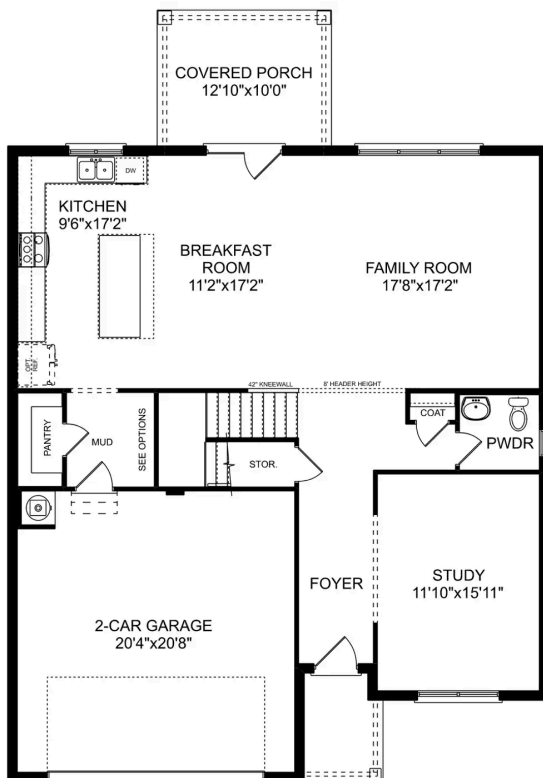


BEDS

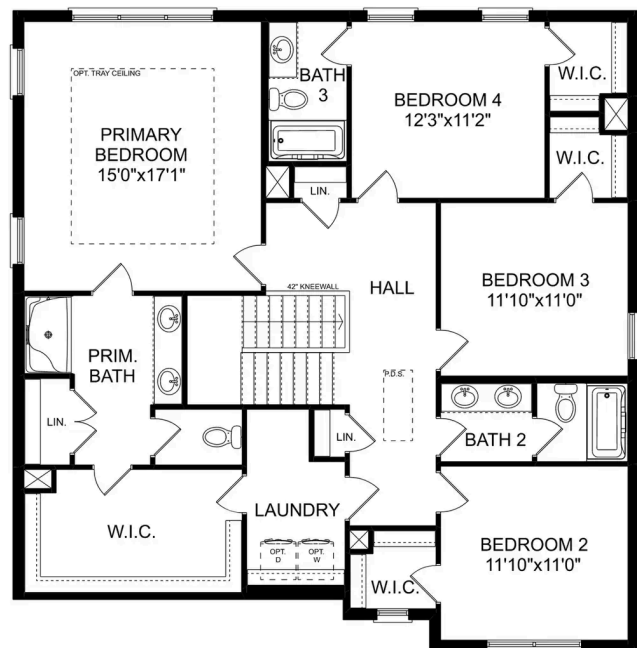
BATHS

SQ FT
2,769

PARKING



MAIN FLOOR



UPPER FLOOR



The Chelsea A

The Chelsea's windows fill the open floor plan with natural light, welcoming you into this charming home. The kitchen showcases ample counterspace, overlooking the breakfast and family room. A large study on the first floor offers potential, and the home's second floor features four bedrooms, each with plenty of closet space. The master bedroom is separate from the other bedrooms for added privacy, and the fourth bedroom features its own private bath.

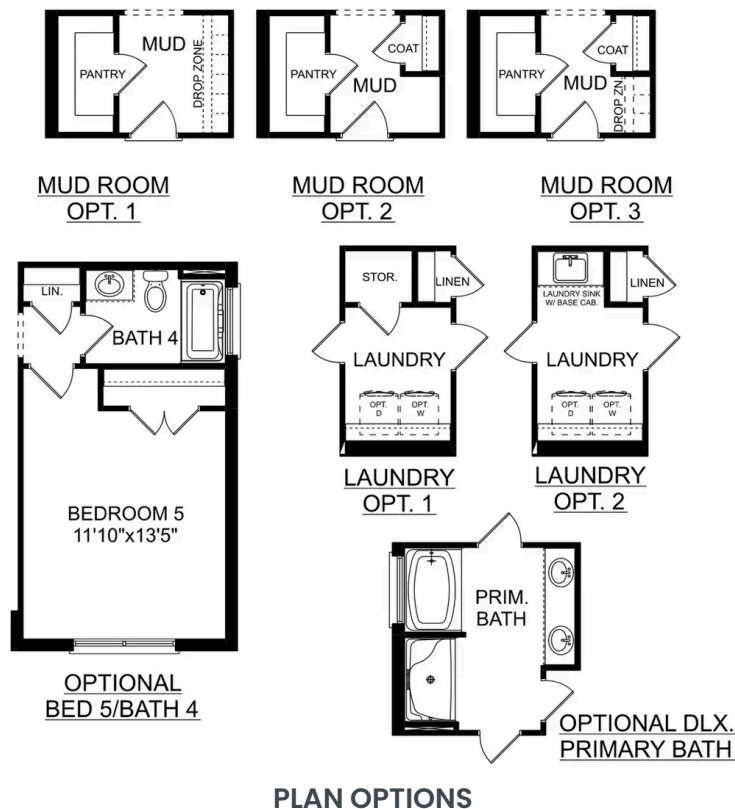
Make it your own with The Chelsea's flexible floor plan. Offerings vary by location, so please discuss your options with your community's agent.

BEDS
4

BATHS
3.5

SQ FT
2,769

GARAGE
2



The Richmond D



Description

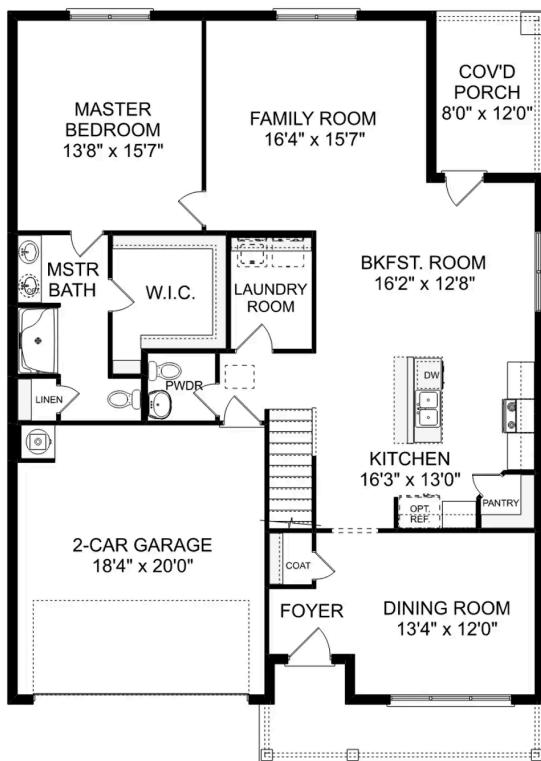
Starring five bedrooms and plenty of space, The Richmond features a sprawling layout! Enter the foyer and discover the elegant dining room to the left. The home quickly expands into an open-concept living space, as the charming kitchen overlooks the breakfast nook and family room.

BEDS
5

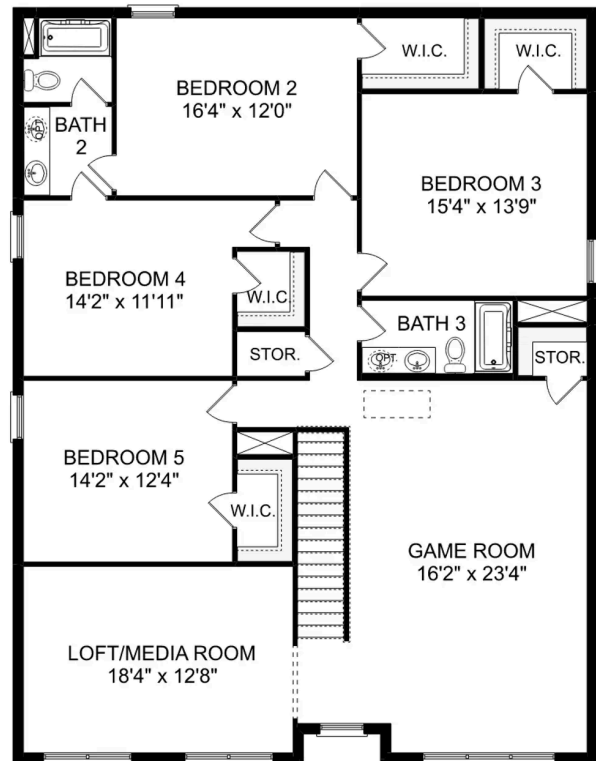
BATHS
3.5

SQ FT
3,537

PARKING
2



THE RICHMOND D MAIN FLOOR



THE RICHMOND D UPPER FLOOR

The Richmond D

Starring five bedrooms and plenty of space, The Richmond features a sprawling layout! Enter the foyer and discover the elegant dining room to the left. The home quickly expands into an open-concept living space, as the charming kitchen overlooks the breakfast nook and family room. Continue through to the Master Suite, featuring a huge walk-in closet.

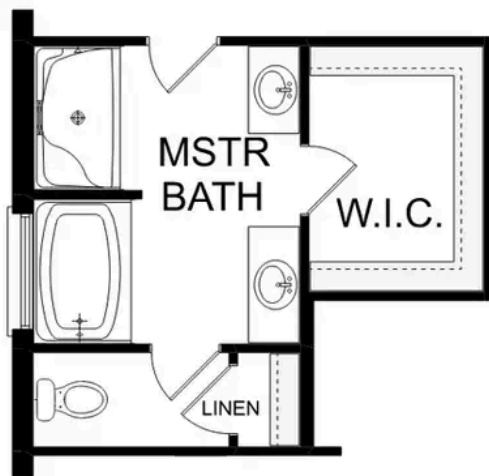
Upstairs, the plan features four more bedrooms, in addition to a game room and media room. Whether you're looking for a home theater or a home gym, The Richmond offers all the space you need.

BEDS
5

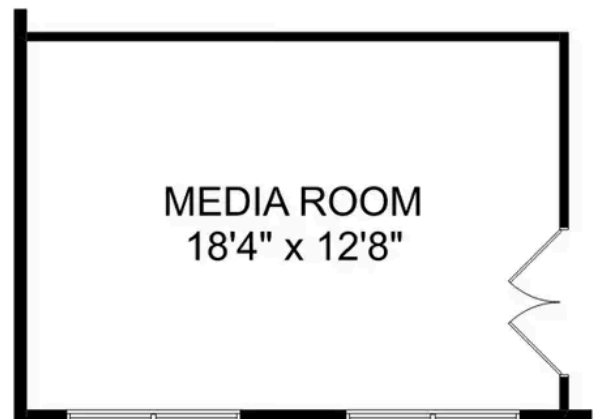
BATHS
3.5

SQ FT
3,537

GARAGE
2



OPTIONAL DELUXE
MASTER BATH



OPTIONAL
MEDIA ROOM

THE RICHMOND D OPTIONS