

Little Burwell Estates

Davidson Homes in Harvest, AL

Welcome to Little Burwell Estates, a charming community located in Harvest, AL, where you'll discover the perfect blend of comfort, affordability and convenience. Davidson Homes is excited to showcase our beautiful single-family homes starting at around \$279,900. Our homes come equipped with amazing features such as granite countertops, ample storage and breathtaking finishes to make your living space truly exceptional.

Features

Granite Countertops

Local Schools

Madison County School Di...
Harvest Elementary
Sparkman Middle
Sparkman High

Utilities

Water: Harvest Monrovia ...
Electric: Huntsville Utilities
Internet: AT&T Fiber



Community Address

138 Amelia Drive

New Homes

02

Floor Plans

08

Homes from the

\$280s

Copyright 2024 Davidson Homes LLC | All Rights Reserved | Davidson Homes is a leading builder of quality new homes across the Southeast. Davidson Homes reserves the right to adjust items listed without prior notice or obligation. Such items may include, but are not limited to, options, included features and community information, pricing, amenities, square footage, terms or availability. Features, options, floor plans, elevations, colors, dimensions and photographs are for illustration purposes and may vary from homes built. Please see your community specialist for details. Equal housing lender. Last Updated 04/26/2024.





Little Burwell Estates in Harvest, AL

Quick Move-In Homes

UPDATED
04/26/2024

HOMES
02

Winston Barton
Call **(256) 685-5522**

COMMUNITY ADDRESS
138 Amelia Drive

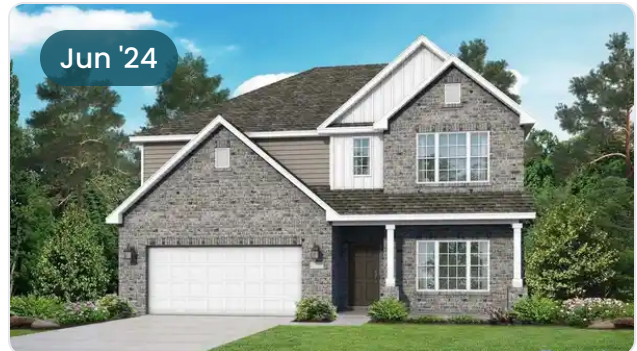


\$379,900

4 Beds 3 Baths 2,453 Sq Ft

304 Yarbrough Road | #14

The Shelby C Plan



\$427,427

4 Beds 3.5 Baths 2,769 Sq Ft

138 Amelia Drive | #17

The Chelsea B Plan

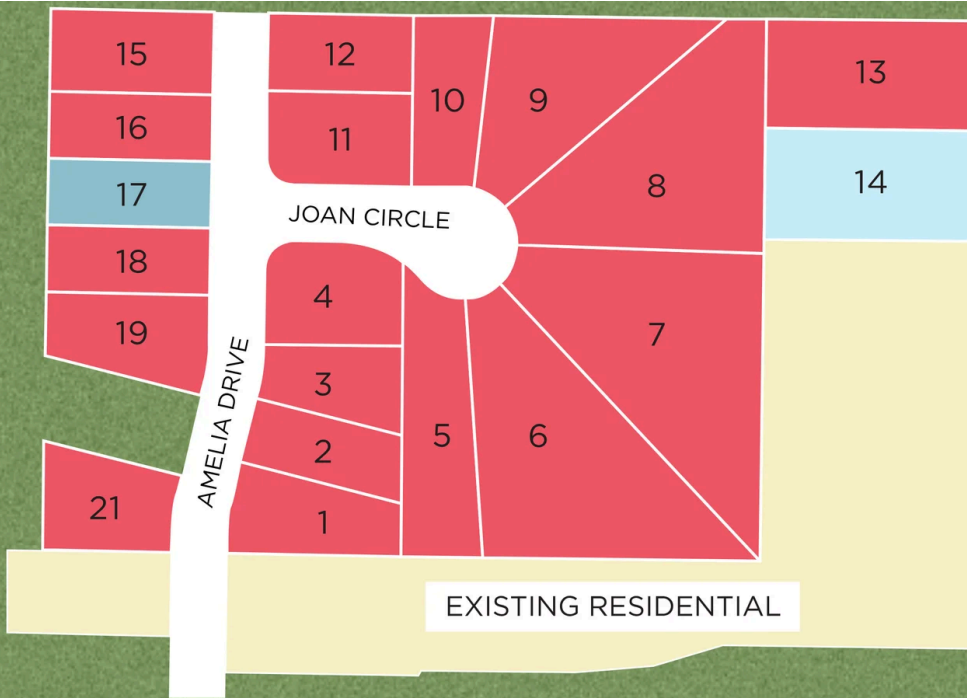




Little Burwell Estates in Harvest, AL

Community Homesite Map

Winston Barton
Call (256) 685-5522



LITTLE BURWELL ESTATES

Harvest, Alabama

 QUICK MOVE-IN

 COMING SOON

 SOLD

Featured Homes for Sale



The Shelby C
304 Yarbrough Road
\$379,900



The Chelsea B
138 Amelia Drive
\$427,427



The Asheville C



Description

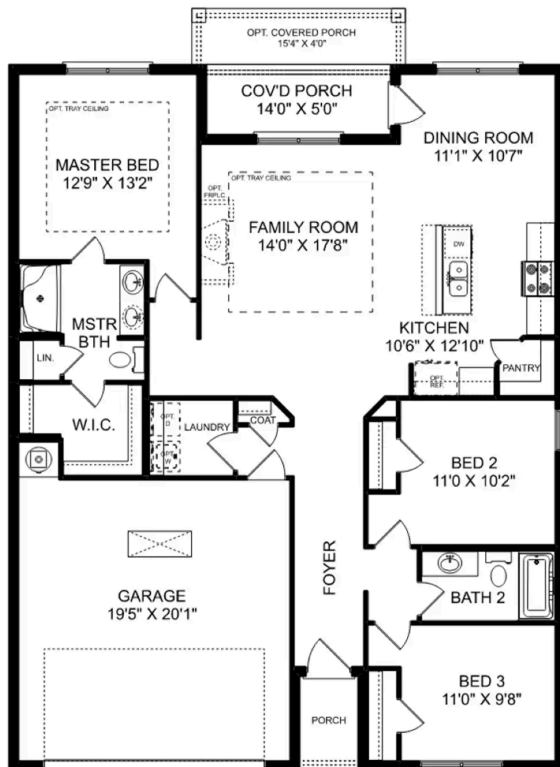
Discover the charm of one-level living with this open-concept home! From The Asheville's large, kitchen island overlooking the family room to its isolated Master Bedroom, we've designed this home with you in mind. The three bedrooms offer plenty of space for you and your guests.

BEDS
3

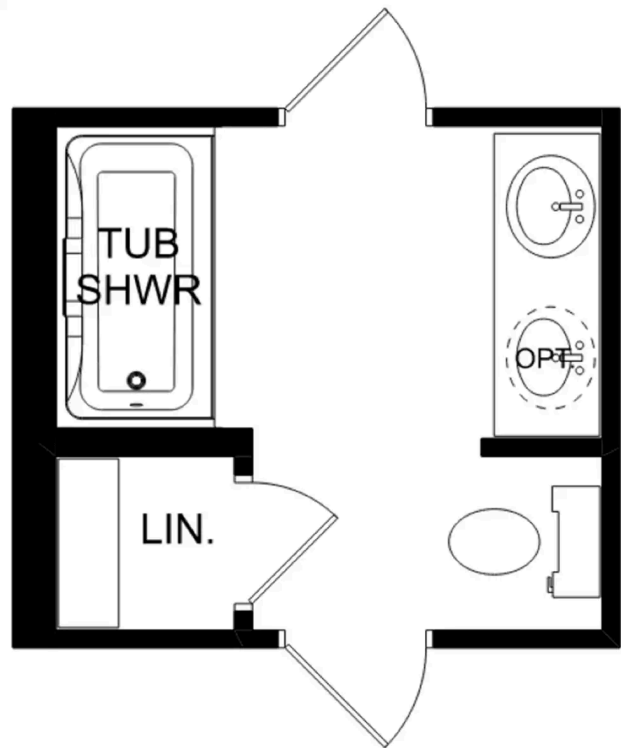
BATHS
2

SQ FT
1,484

PARKING
2



THE ASHEVILLE C



THE ASHEVILLE C OPTIONS

The Franklin C



Description

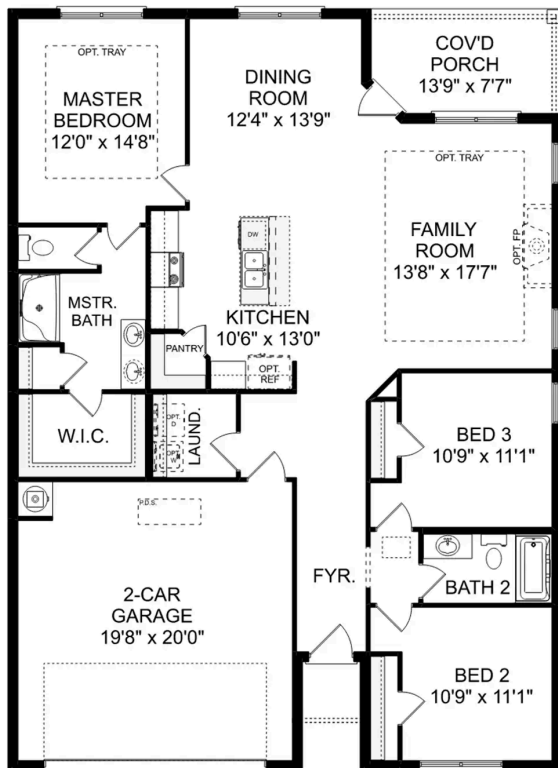
Within this cozy, one-level home lies a modern use of space. From the kitchen's large island to the family room's spacious open-concept, you're surrounded by owner-centric design.

BEDS
3

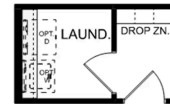
BATHS
2

SQ FT
1,620

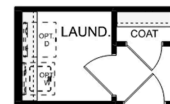
PARKING
2



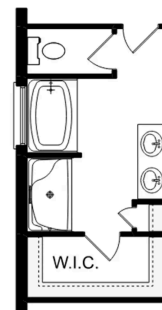
THE FRANKLIN C



OPT. DROP ZONE



OPT. COAT CLOSET



OPT. DELUXE MASTER BATH

THE FRANKLIN C OPTIONS

The Daphne C

Exterior Options

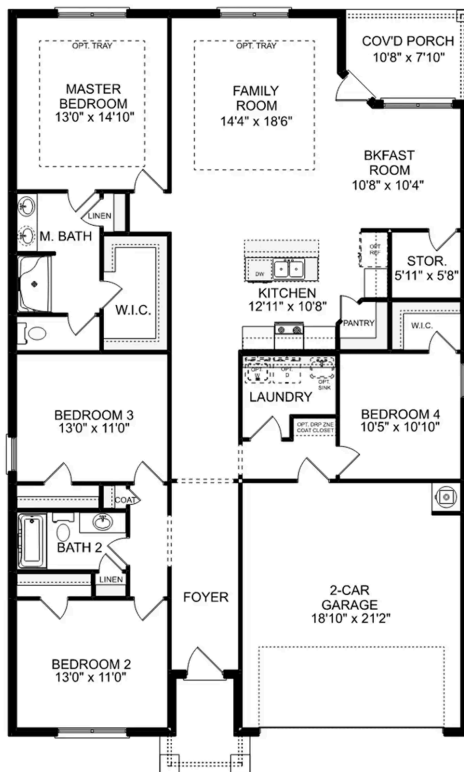


BEDS
4

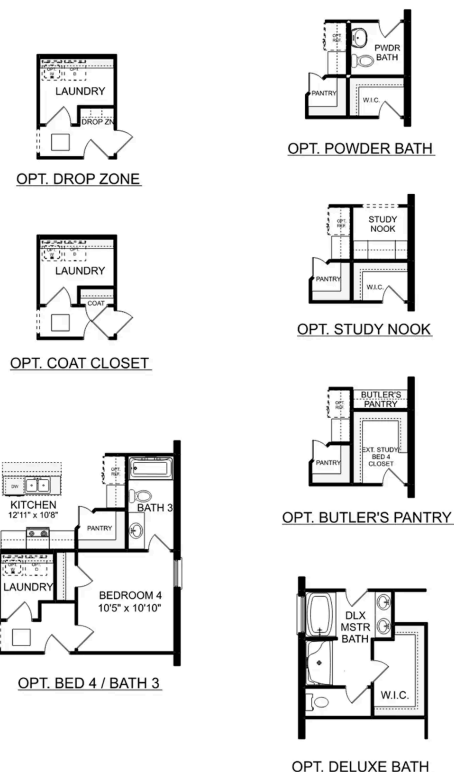
BATHS
2

SQ FT
1,964

PARKING
2



THE DAPHNE C



THE DAPHNE C OPTIONS



Little Burwell Estates in Harvest, AL

Call (256) 685-5522
DAVIDSONHOMESLLC.COM

The Everett

Exterior Options

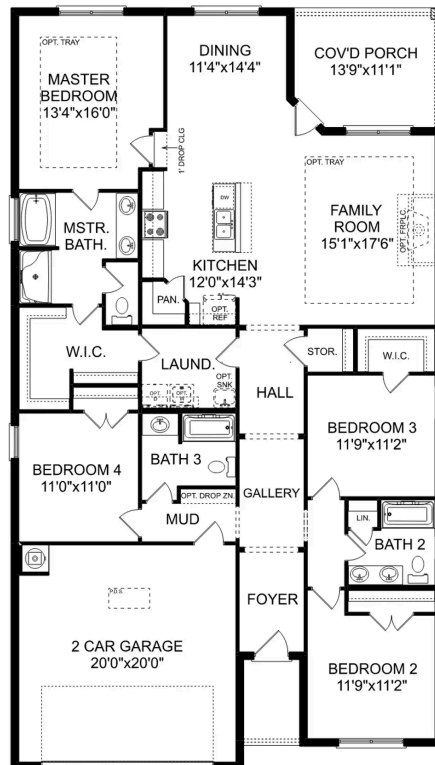


BEDS
4

BATHS
3

SQ FT
2,136

PARKING
2



THE EVERETT





Little Burwell Estates in Harvest, AL

Call (256) 685-5522
DAVIDSONHOMESLLC.COM

The Shelby A



BEDS

BATHS

SQ FT
2,452

PARKING



MAIN FLOOR



UPPER FLOOR



The Shelby A

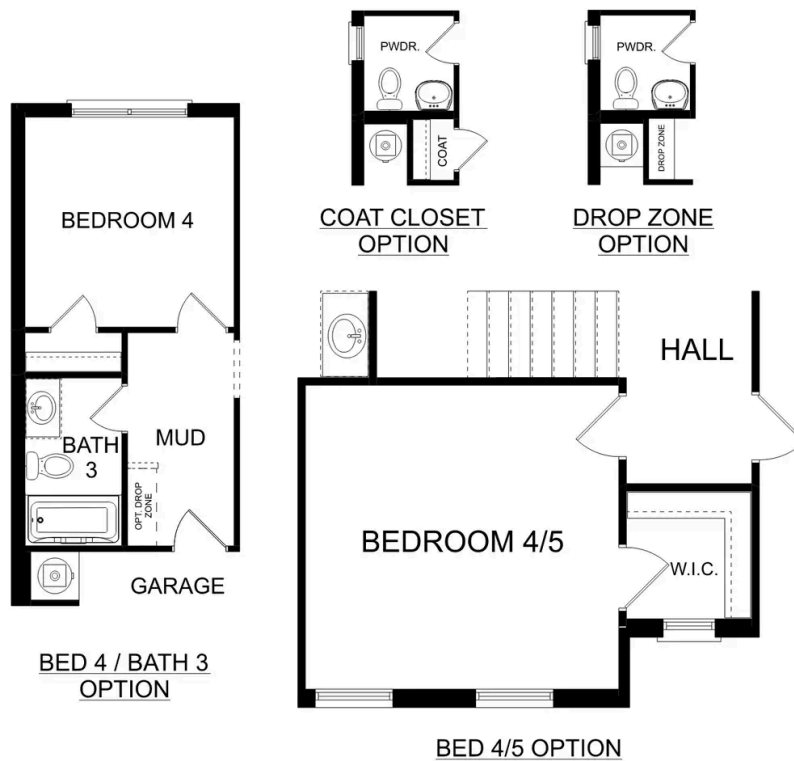
The Shelby welcomes you into a modern, open space, complete with a formal dining room and study. The kitchen overlooks an open-concept family room. The second floor features a spacious master bedroom with a large walk-in closet and master bath along with two additional bedrooms with ample walk-in closets of their own.

BEDS
3

BATHS
2.5

SQ FT
2,452

GARAGE
2



PLAN OPTIONS

The Charleston D



Description

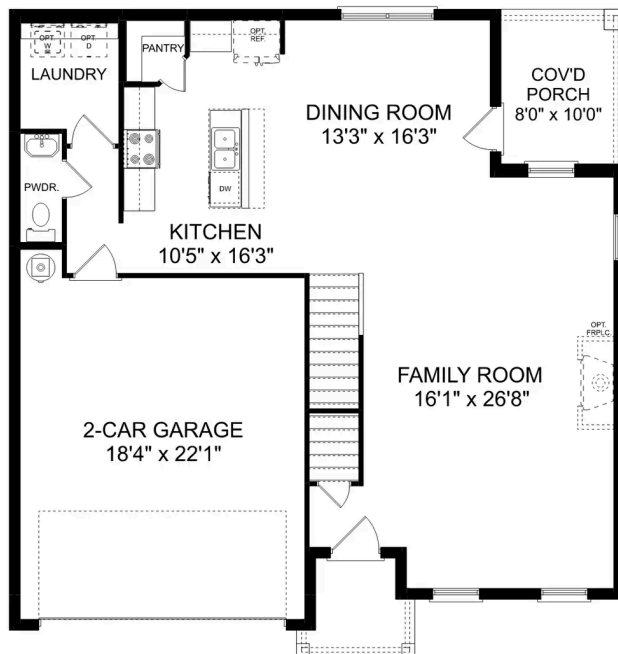
The sky's the limit with The Charleston's two-story layout and massive bonus room. Inside the home's brick exterior, the open-concept kitchen overlooks the huge family room. The Master Suite offers you a personal retreat – complete with large walk-in closet.

BEDS
4

BATHS
2.5

SQ FT
2,505

PARKING
2



THE CHARLESTON D MAIN FLOOR



THE CHARLESTON D UPPER FLOOR

The Charleston D

The sky's the limit with The Charleston's two-story layout and massive bonus room. Inside the home's brick exterior, the open-concept kitchen overlooks the huge family room. The Master Suite offers you a personal retreat – complete with large walk-in closet. Whether you're looking for a game room or a fifth bedroom, the upstairs bonus room gives you all the flexibility you need. Make it your own with The Charleston's flexible floor plan! Just know that offerings vary by location, so please discuss our standard features and upgrade options with your community's agent.

BEDS
4

BATHS
2.5

SQ FT
2,505

GARAGE
2



THE CHARLESTON D OPTIONS

The Chelsea A

Exterior Options

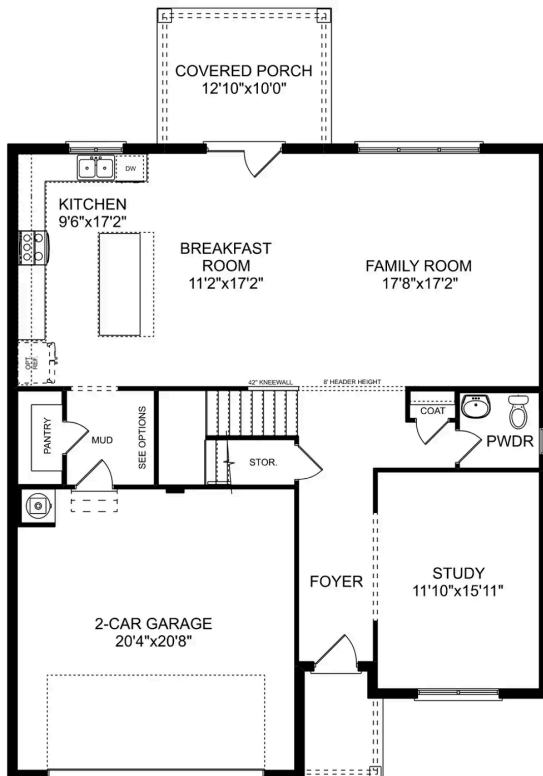


BEDS
4

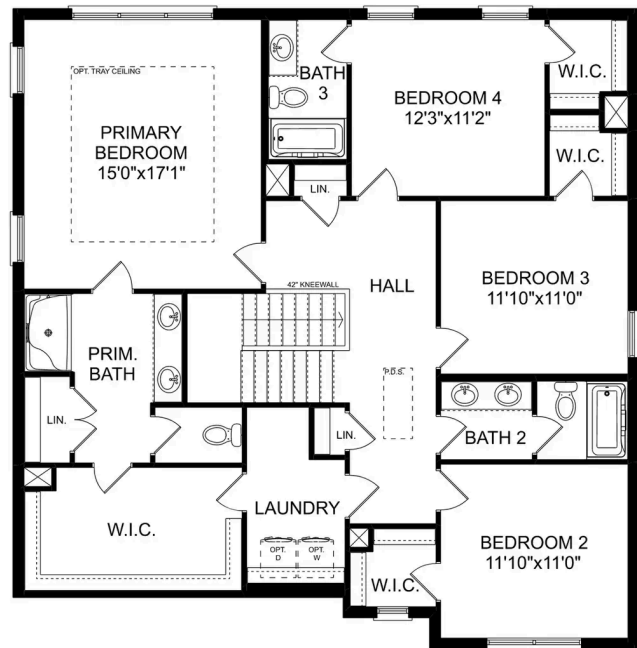
BATHS
3.5

SQ FT
2,769

PARKING
2



MAIN FLOOR



UPPER FLOOR

The Chelsea A

The Chelsea's windows fill the open floor plan with natural light, welcoming you into this charming home. The kitchen showcases ample counterspace, overlooking the breakfast and family room. A large study on the first floor offers potential, and the home's second floor features four bedrooms, each with plenty of closet space. The master bedroom is separate from the other bedrooms for added privacy, and the fourth bedroom features its own private bath.

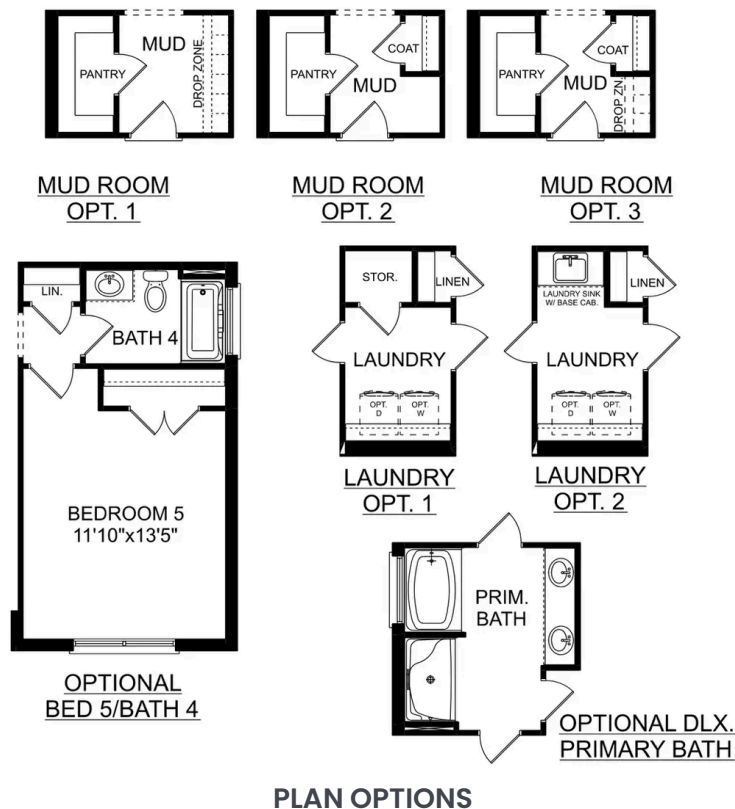
Make it your own with The Chelsea's flexible floor plan. Offerings vary by location, so please discuss your options with your community's agent.

BEDS
4

BATHS
3.5

SQ FT
2,769

GARAGE
2



The Richmond D



Description

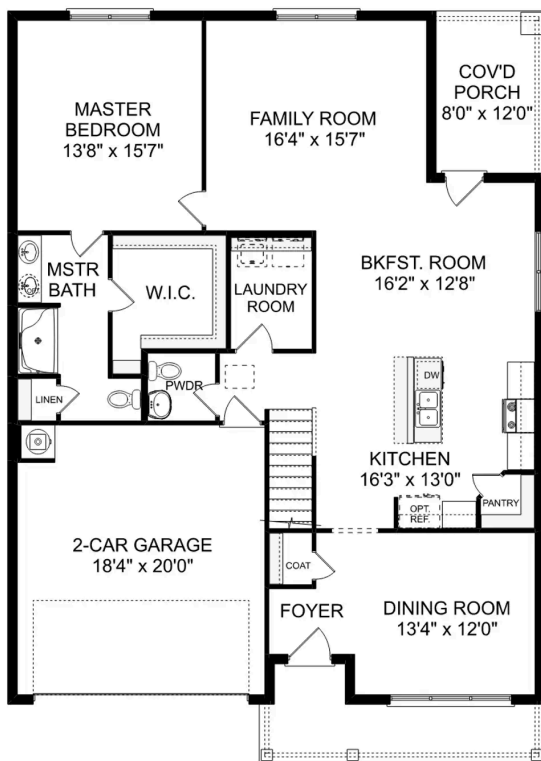
Starring five bedrooms and plenty of space, The Richmond features a sprawling layout! Enter the foyer and discover the elegant dining room to the left. The home quickly expands into an open-concept living space, as the charming kitchen overlooks the breakfast nook and family room.

BEDS
5

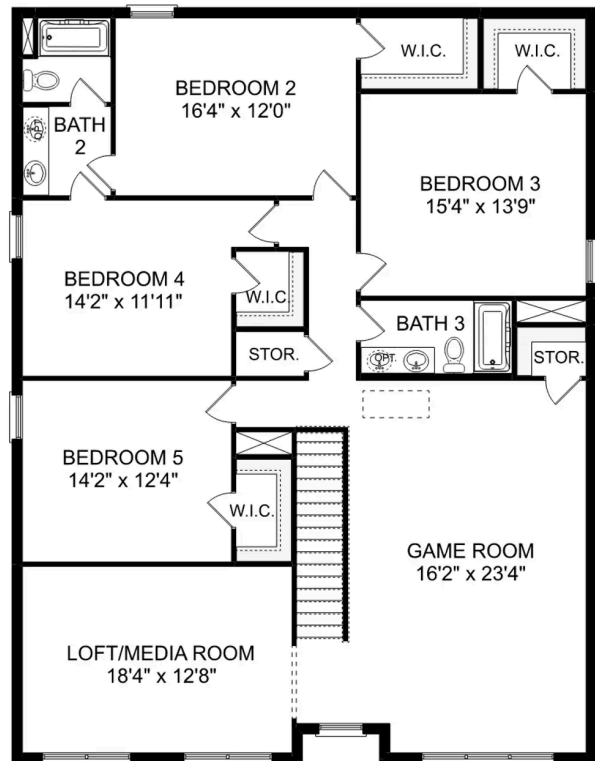
BATHS
3.5

SQ FT
3,537

PARKING
2



THE RICHMOND D MAIN FLOOR



THE RICHMOND D UPPER FLOOR

The Richmond D

Starring five bedrooms and plenty of space, The Richmond features a sprawling layout! Enter the foyer and discover the elegant dining room to the left. The home quickly expands into an open-concept living space, as the charming kitchen overlooks the breakfast nook and family room. Continue through to the Master Suite, featuring a huge walk-in closet.

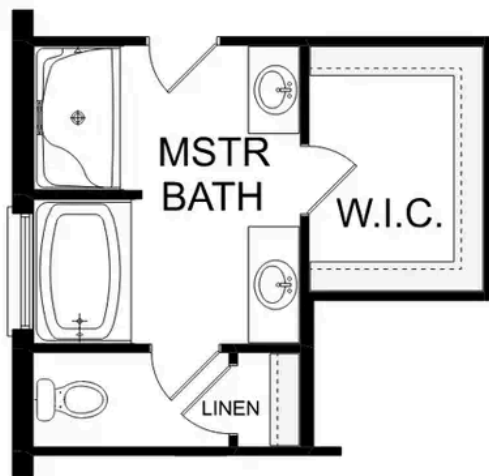
Upstairs, the plan features four more bedrooms, in addition to a game room and media room. Whether you're looking for a home theater or a home gym, The Richmond offers all the space you need.

BEDS
5

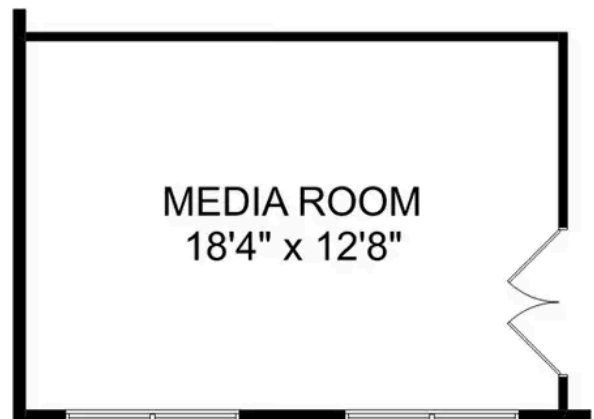
BATHS
3.5

SQ FT
3,537

GARAGE
2



OPTIONAL DELUXE
MASTER BATH



OPTIONAL
MEDIA ROOM

THE RICHMOND D OPTIONS