

# Collins Lane

## Davidson Homes in Meridianville, AL

Now Selling - Davidson Homes is proud to present Collins Lane, our newest community in Meridianville, AL. Here, we're unveiling a fresh line of floor plans tailored for today's homeowners.

Location is key! Collins Lane is situated within a top-rated school district, ensuring excellent educational opportunities for residents. Convenience is also a hallmark of this community. Golf enthusiasts can enjoy the nearby Colonial Golf Course, while daily shopping needs are met with a Publix just around the corner.

### Features

Great Public Schools  
100% Financing Available  
Nearby Outdoor Activities

### Local Schools

Madison County School Di...  
Lynn Fanning Elementary  
Meridianville Middle  
Hazel Green High

### Utilities

Electric: Huntsville Utilities  
Water: Madison County W...



Community Address  
**Fuller Drive**

New Homes

**03**

Floor Plans

**05**

Homes from the

**\$240s**

Copyright 2024 Davidson Homes, Inc. | All Rights Reserved | Davidson Homes is a leading builder of quality new homes across the Southeast. Davidson Homes reserves the right to adjust items listed without prior notice or obligation. Such items may include, but are not limited to, options, included features and community information, pricing, amenities, square footage, terms or availability. Features, options, floor plans, elevations, colors, dimensions and photographs are for illustration purposes and may vary from homes built. Please see your community specialist for details. Equal housing lender. Last Updated 05/09/2024.





Collins Lane in Meridianville, AL

## Quick Move-In Homes

Lou Montoya  
Call (256) 484-8875



SPRING SPLURGE

Save **30%** on  
Design Upgrades!

PLUS, ENJOY  
**\$5,000\***  
TO USE AS YOU CHOOSE!

LEARN MORE →

\*See link for terms/conditions.

UPDATED  
05/09/2024

HOMES  
03

COMMUNITY ADDRESS  
Fuller Drive



**\$274,925**

**4 Beds 2 Baths 1,964 Sq Ft**

106 Collins Lane | #1

The Daphne V Plan



**\$259,925**

**3 Beds 2 Baths 1,620 Sq Ft**

110 Collins Lane | #2

The Franklin V Plan



**\$249,925**

**3 Beds 2 Baths 1,484 Sq Ft**

110-A Collins Lane | #3

The Asheville V Plan

Copyright 2024 Davidson Homes, Inc. | All Rights Reserved | Davidson Homes is a leading builder of quality new homes across the Southeast. Davidson Homes reserves the right to adjust items listed without prior notice or obligation. Such items may include, but are not limited to, options, included features and community information, pricing, amenities, square footage, terms or availability. Features, options, floor plans, elevations, colors, dimensions and photographs are for illustration purposes and may vary from homes built. Please see your community specialist for details. Equal housing lender.





Collins Lane in Meridianville, AL

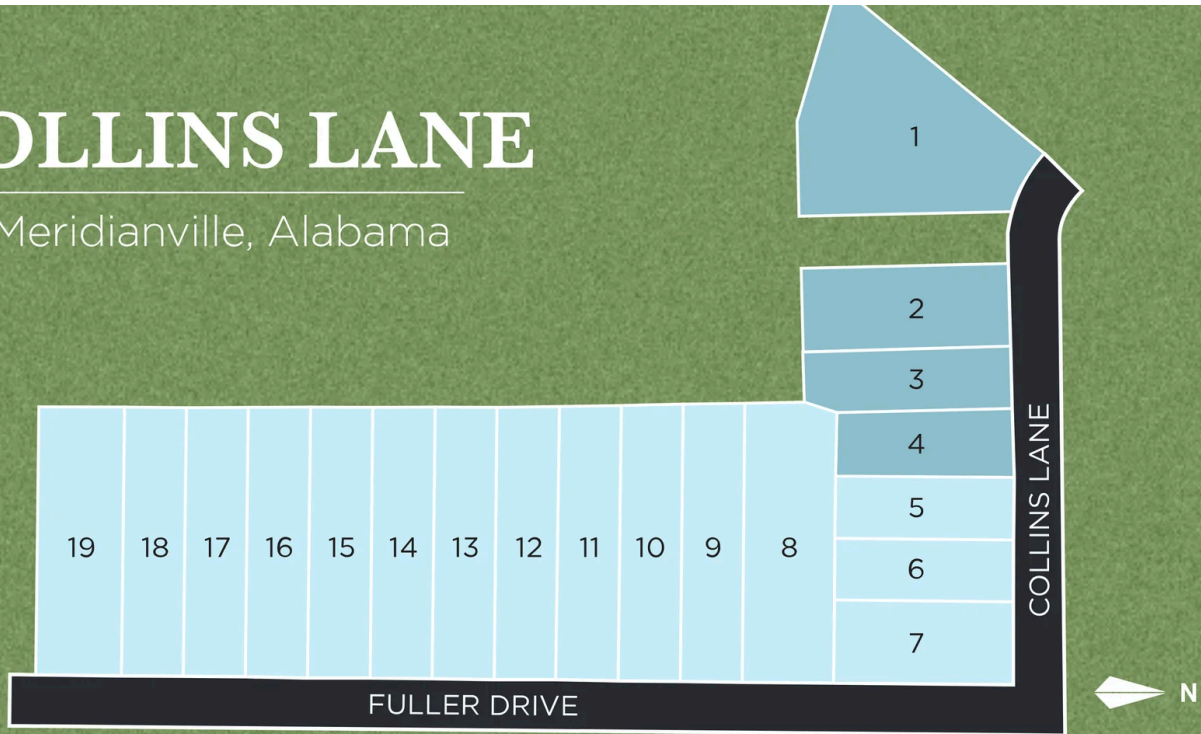
## Community Homesite Map

Lou Montoya  
Call (256) 484-8875



# COLLINS LANE

Meridianville, Alabama

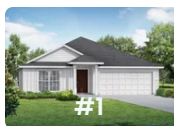


 QUICK MOVE-IN

 COMING SOON

 SOLD

## Featured Homes for Sale



**The Daphne V**  
106 Collins Lane  
**\$274,925**



**The Franklin V**  
110 Collins Lane  
**\$259,925**



**The Asheville V**  
110-A Collins Lane  
**\$249,925**







Collins Lane in Meridianville, AL

Call (256) 484-8875  
DAVIDSONHOMES.COM

## The Butler V



### Description

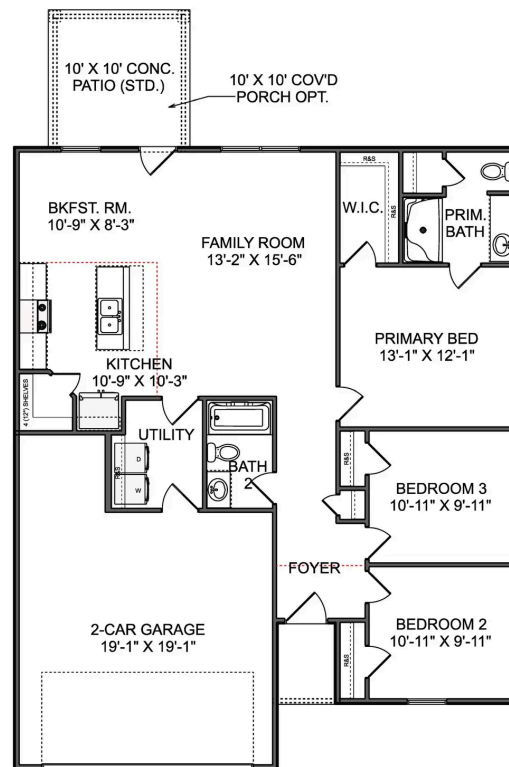
"The Butler" is a gracefully designed 1,299 square foot floor plan, blending comfort with efficiency. Its open floor plan unites the living, dining, and kitchen areas, creating an inviting space ideal for family life and entertaining.

BEDS  
**3**

BATHS  
**2**

SQ FT  
**1,299**

PARKING  
**2**



THE BUTLER V MAIN FLOOR







Collins Lane in Meridianville, AL

Call (256) 484-8875  
DAVIDSONHOMES.COM

## The Asheville V



### Description

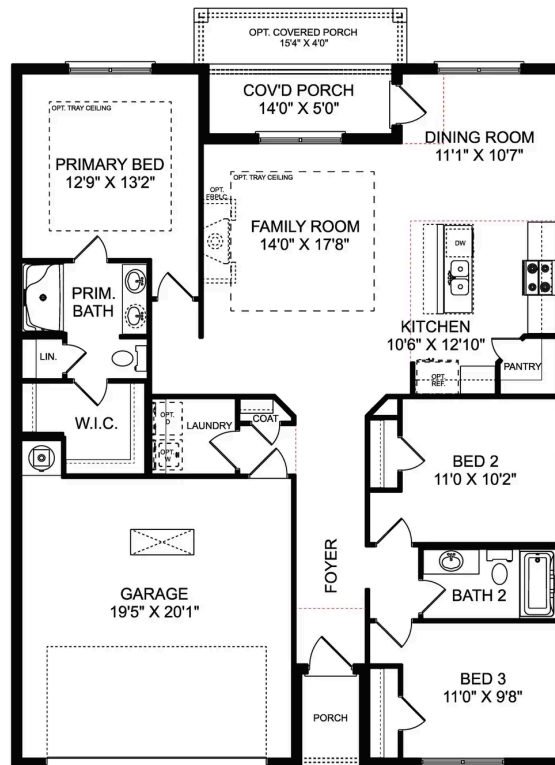
Discover the charm of one-level living with this open-concept home! From The Asheville's large, kitchen island overlooking the family room to its isolated Master Bedroom, we've designed this home with you in mind. The three bedrooms offer plenty of space for you and your guests.

BEDS  
**3**

BATHS  
**2**

SQ FT  
**1,484**

PARKING  
**2**



THE ASHEVILLE V





Collins Lane in Meridianville, AL

Call (256) 484-8875  
DAVIDSONHOMES.COM

## The Franklin V



### Description

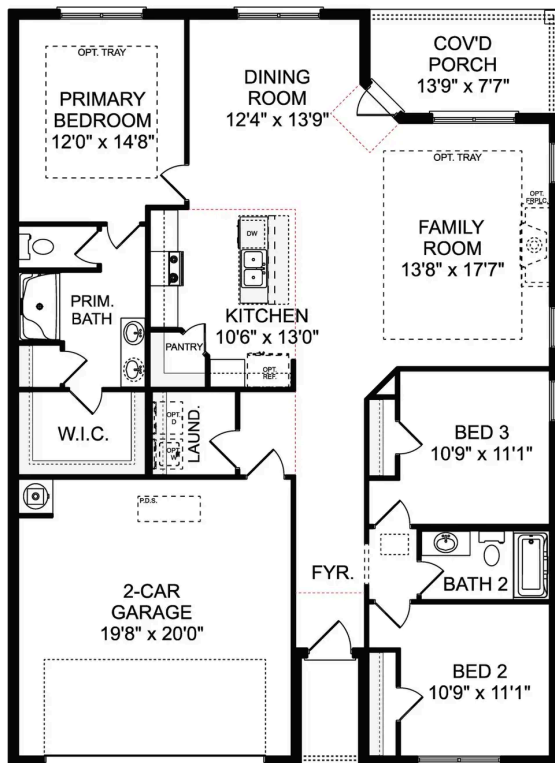
Within this cozy, one-level home lies a modern use of space. From the kitchen's large island to the family room's spacious open-concept, you're surrounded by owner-centric design.

**BEDS**  
**3**

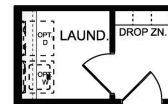
**BATHS**  
**2**

**SQ FT**  
**1,620**

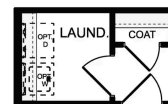
**PARKING**  
**2**



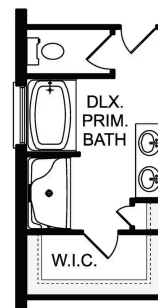
**THE FRANKLIN V**



OPT. DROP ZONE



OPT. COAT CLOSET



OPT. DELUXE PRIMARY BATH

**THE FRANKLIN V OPTIONS**



# The Daphne V



## Description

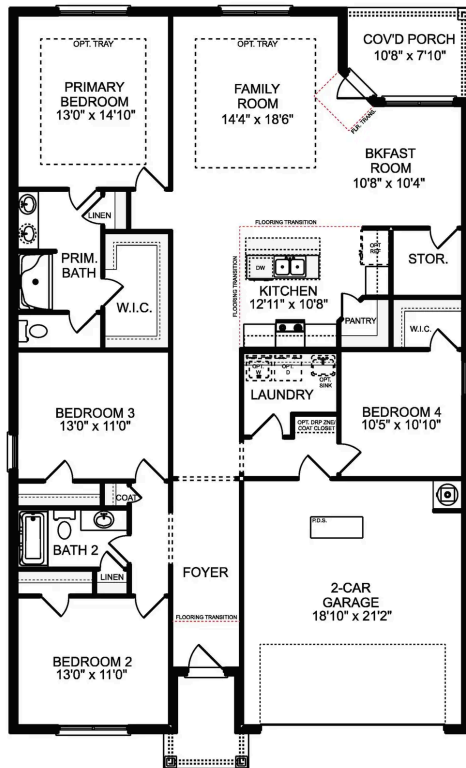
Show off your style with the Daphne's open-concept floor plan! Featuring tons of natural light, the family room is perfect for entertaining, and the home's kitchen features an adorable breakfast nook. The Master Suite offers plenty of space, and its walk-in closet has room to spare.

**BEDS**  
**4**

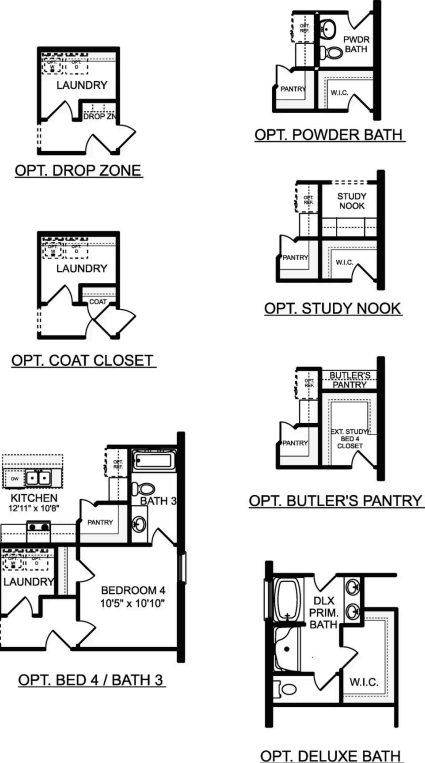
**BATHS**  
**2**

**SQ FT**  
**1,964**

**PARKING**  
**2**



**THE DAPHNE V**



**THE DAPHNE V OPTIONS**





Collins Lane in Meridianville, AL

Call (256) 484-8875  
DAVIDSONHOMES.COM

## The Everett V



### Description

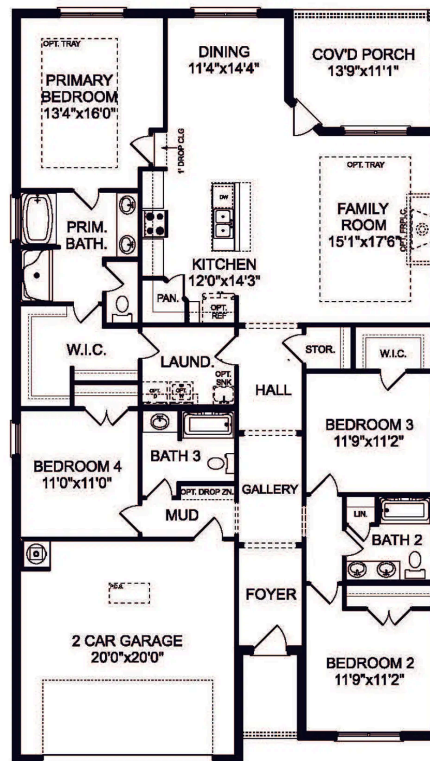
The Everett is a functional and inviting floor plan, encompassing 2136 square feet with four bedrooms and three bathrooms. Its open-concept family room and kitchen are filled with natural light, creating a cozy space for family gatherings and casual entertaining.

BEDS  
**4**

BATHS  
**3**

SQ FT  
**2,136**

PARKING  
**2**



THE EVERETT V

