

# Enclave at Newport

Davidson Homes in Crosby, TX

Welcome to Enclave at Newport - a master-planned community in beautiful Crosby, TX! This tranquil community provides a retreat with easy city access. Enjoy a community pool, playground, golf course and more at your doorstep. With scenic streets and friendly neighbors, Enclave at Newport is more than a community - it's home. Discover comfort, convenience, and connection here.

We'll continue to add details as we develop the community further; until then, stay in the loop by joining our VIP list. You'll be the first to know about lot availability, floor plan details, pricing and more.

## Features

Community Pool  
Tennis Court  
Playground

## Local Schools

Crosby ISD



Community Address

5925 FM 2100

Floor Plans

06

Homes from the

\$250s

Copyright 2024 Davidson Homes, Inc. | All Rights Reserved | Davidson Homes is a leading builder of quality new homes across the Southeast. Davidson Homes reserves the right to adjust items listed without prior notice or obligation. Such items may include, but are not limited to, options, included features and community information, pricing, amenities, square footage, terms or availability. Features, options, floor plans, elevations, colors, dimensions and photographs are for illustration purposes and may vary from homes built. Please see your community specialist for details. Equal housing lender. Last Updated 05/11/2024.



# The Costa A

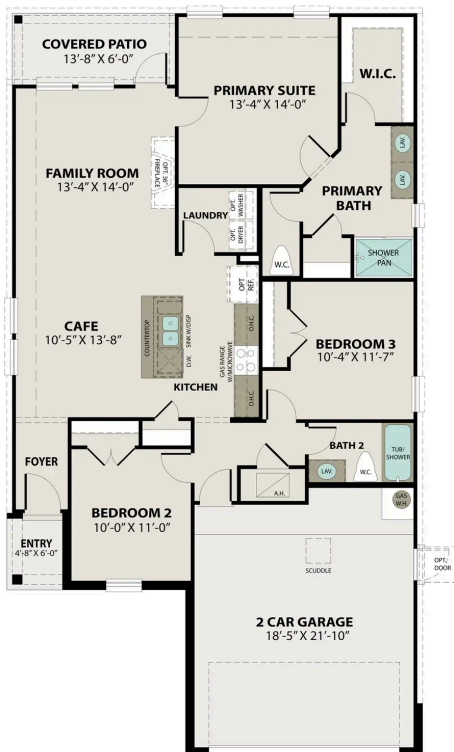


**BEDS**  
**3**

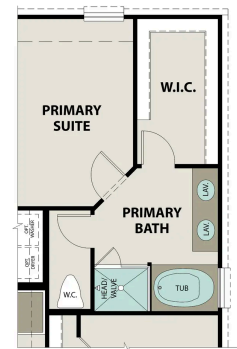
**BATHS**  
**2**

**SQ FT**  
**1,428**

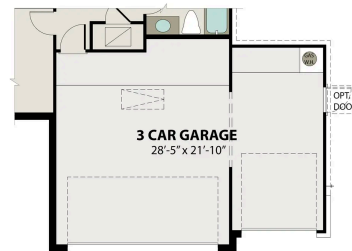
**PARKING**  
**2**



**MAIN FLOOR PLAN**



**OPT. DELUXE PRIMARY BATH**



**OPT. 3-CAR GARAGE**

**OPTIONS**



# The Laguna A

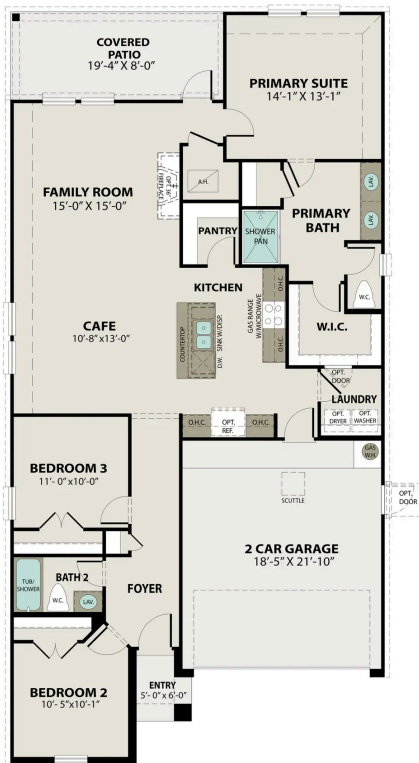


**BEDS**  
**3**

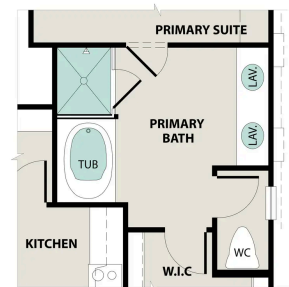
**BATHS**  
**2**

**SQ FT**  
**1,635**

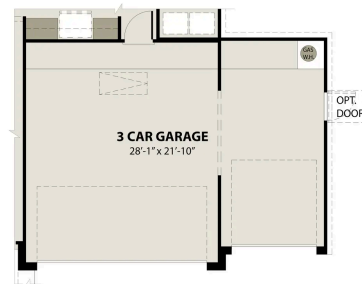
**PARKING**  
**2**



**MAIN FLOOR PLAN**



**OPT. DELUXE PRIMARY BATH**



**OPT. 3-CAR GARAGE**

**OPTIONS**

# The Riviera A

## Exterior Options

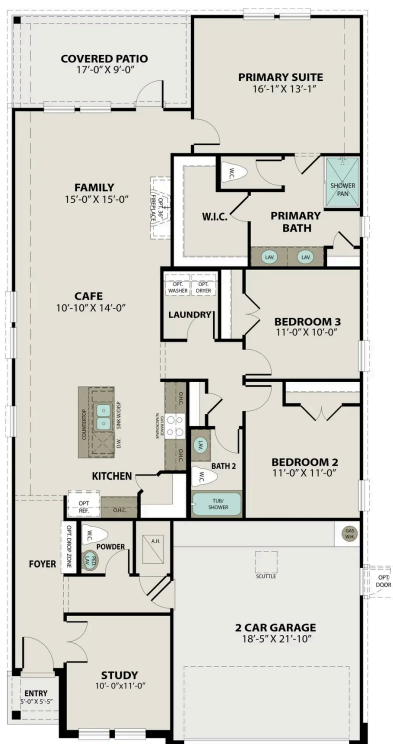


**BEDS**  
**3**

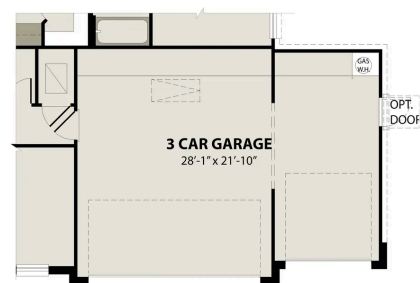
**BATHS**  
**2.5**

**SQ FT**  
**1,841**

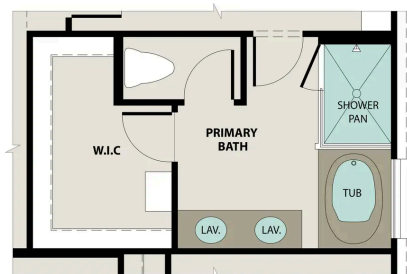
**PARKING**  
**2**



**MAIN FLOOR PLAN**



**OPT. 3-CAR GARAGE**



**OPT. DELUXE PRIMARY BATH**

**OPTIONS**



## The Acadia A



**BEDS**  
**4**

**BATHS**  
**3**

**SQ FT**  
**2,153**

**PARKING**  
**2**

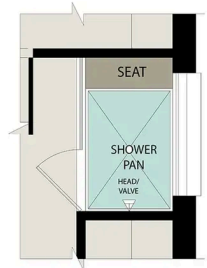
### Exterior Options



**MAIN FLOOR PLAN**



**OPT. DELUXE OWNER'S BATH**



**OWNER'S SHOWER W/ SEAT**



**SHOWER I.L.O.  
TUB AT BATH 2**



**SHOWER I.L.O.  
TUB AT BATH 3**

**PLAN OPTIONS**

## The Tierra A



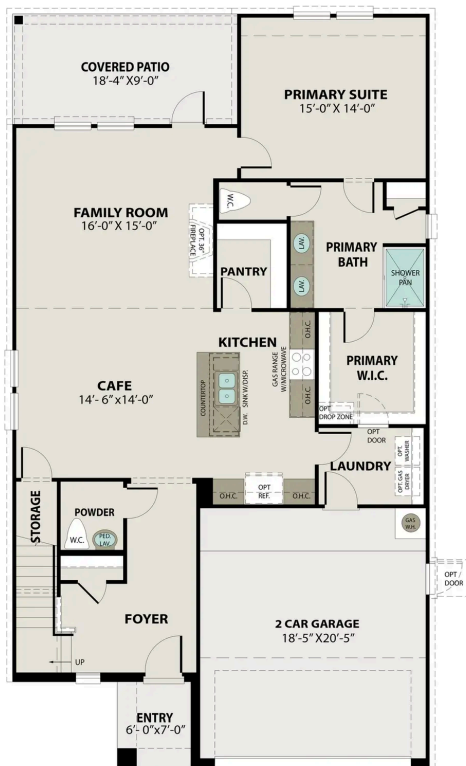
**BEDS**  
**4**

**BATHS**  
**2.5**

**SQ FT**  
**2,407**

**PARKING**  
**2**

### Exterior Options



**MAIN FLOOR PLAN**



**UPPER FLOOR PLAN**



## The Tierra A

Welcome to the Tierra! The foyer welcomes guests into a spacious, open concept kitchen/café/family room area. This floor plan features a convenient first floor owners suite with an impressive en suite bath and a spacious closet connected to the home's laundry room. Upstairs, you'll find a versatile game room area and three more bedrooms, giving everyone their own space!

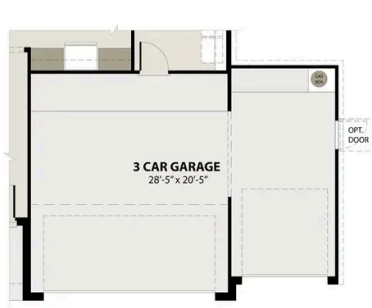
Make it your own with The Tierra's flexible floor plan. Just know that offerings vary by location, so please discuss our standard features and upgrade options with your community's agent.

BEDS  
**4**

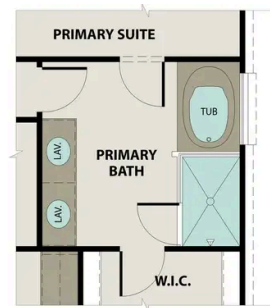
BATHS  
**2.5**

SQ FT  
**2,407**

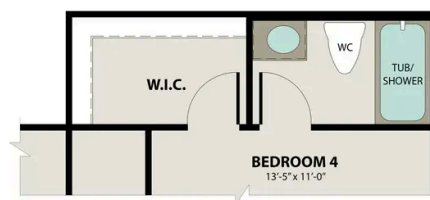
GARAGE  
**2**



OPT. 3-CAR GARAGE



OPT. DELUXE PRIMARY BATH



OPT. BATH 3

### OPTIONS

## The Sequoia A



**BEDS**  
**4**

**BATHS**  
**3.5**

**SQ FT**  
**2,743**

**PARKING**  
**2**



**MAIN FLOOR PLAN**



**UPPER FLOOR PLAN**



## The Sequoia A

Welcome to the Sequoia! Step inside to find space, style and comfort. The secluded study makes for the perfect home office. Upstairs, the versatile game room space is perfect for playtime! Just down the hall, there's three more bedrooms, each with their own walk-in closets, and two additional bathrooms.

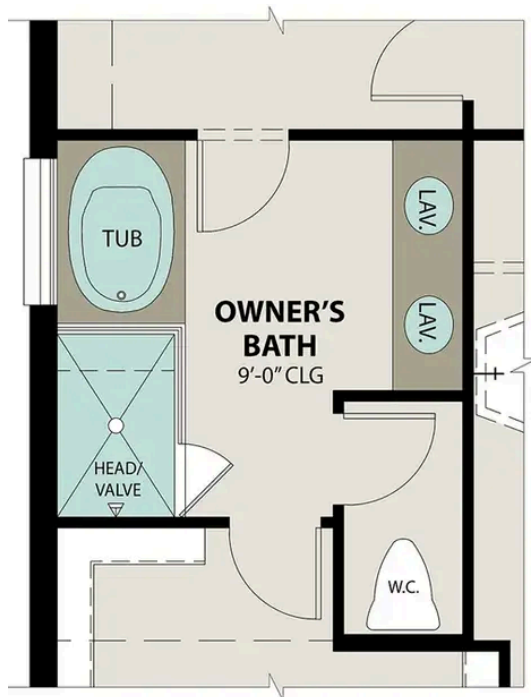
Make it your own with The Sequoia's flexible floor plan. Just know that offerings vary by location, so please discuss our standard features and upgrade options with your community's agent.

BEDS  
**4**

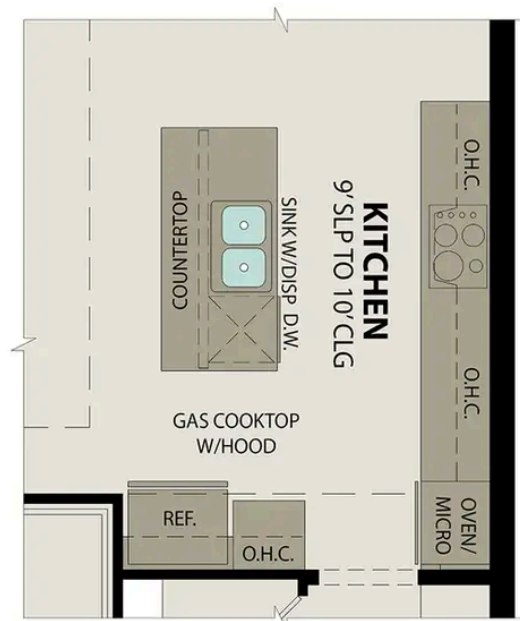
BATHS  
**3.5**

SQ FT  
**2,743**

GARAGE  
**2**



**OPT. DELUXE OWNER'S BATH**



**OPT. GOURMET KITCHEN**

### PLAN OPTIONS