

Shelton Square

Davidson Homes in Murfreesboro, TN

Welcome to Shelton Square! This community, from the clubhouse/pool to its green space, offers a modern, green lifestyle. Spend some time outdoors, have a picnic in one of the green spaces and take in the fresh air.

With Nashville less than 30 minutes away, Shelton Square finds itself in an ideal location. It's outside the city's shadow, nestled in the heart of the Murfreesboro suburbs, but it's still within a reasonable commute. And Rutherford County schools are among the best in the state, ensuring your kids have the education they need to succeed.

Features

Workout Facility
Playground
Basketball Court

Local Schools

Overall Creek Elementary
Brown's Chapel Elementary
Blackman Middle
Blackman High

Utilities

Water: Consolidated Utility...
Electric: Middle Tennessee El...
Gas: Atmos Energy Consu...



Community Address

2928 Blackman Rd

New Homes

01

Floor Plans

01

Homes from the

\$890s

Copyright 2024 Davidson Homes LLC | All Rights Reserved | Davidson Homes is a leading builder of quality new homes across the Southeast. Davidson Homes reserves the right to adjust items listed without prior notice or obligation. Such items may include, but are not limited to, options, included features and community information, pricing, amenities, square footage, terms or availability. Features, options, floor plans, elevations, colors, dimensions and photographs are for illustration purposes and may vary from homes built. Please see your community specialist for details. Equal housing lender. Last Updated 04/24/2024.





Shelton Square in Murfreesboro, TN

Quick Move-In Homes

UPDATED
04/24/2024

HOMES
01

Jen Tooley
Call **(615) 784-5735**

COMMUNITY ADDRESS
2928 Blackman Rd



\$893,300

5 Beds 4.5 Baths 4,244 Sq Ft

5406 Maroon Drive | #540

The Albany A Plan

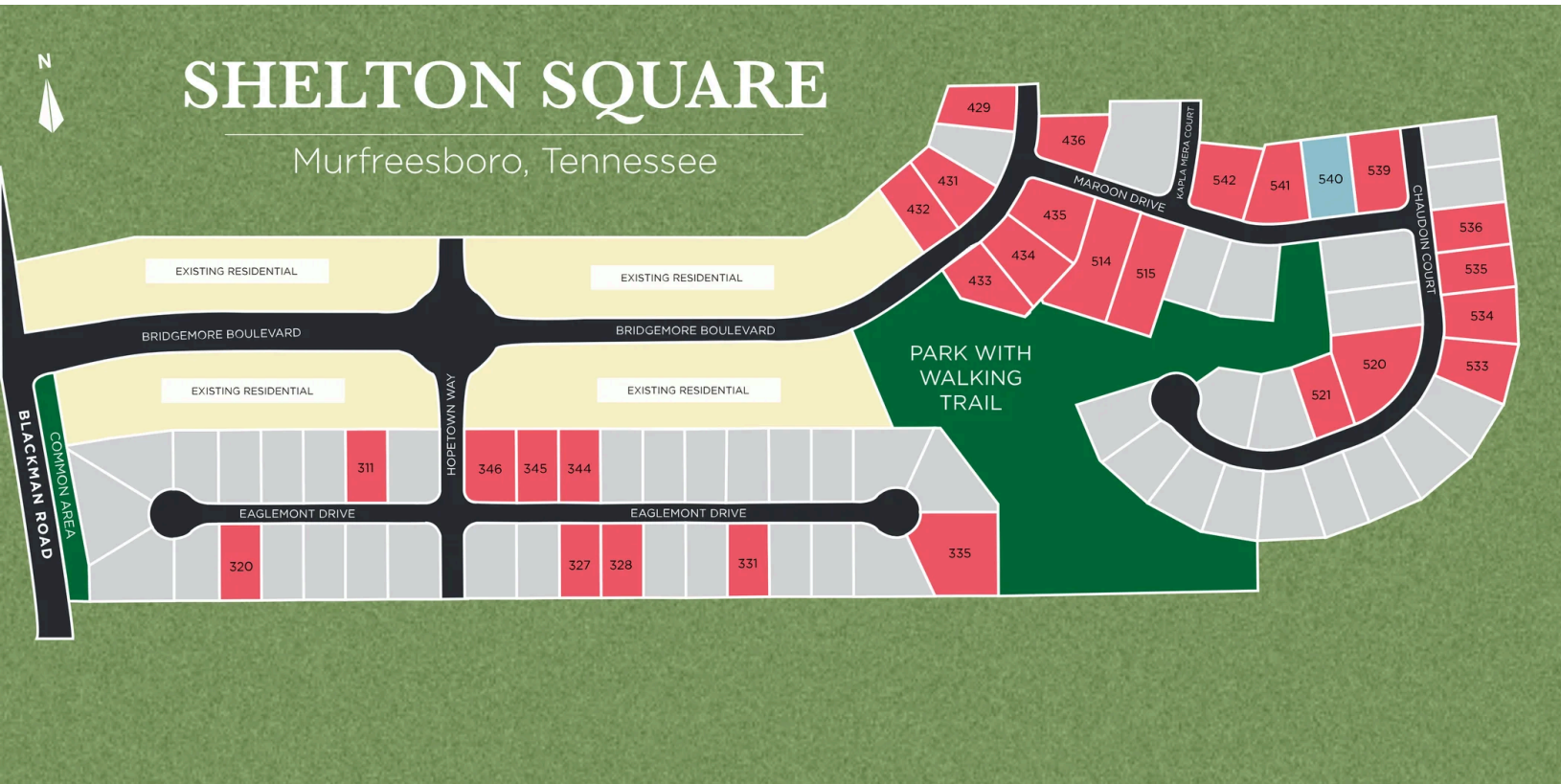




Shelton Square in Murfreesboro, TN

Community Homesite Map

Jen Tooley
Call (615) 784-5735

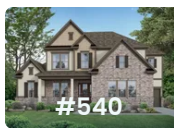


 QUICK MOVE-IN

 COMING SOON

 SOLD

Featured Homes for Sale



The Albany A
5406 Maroon Drive
\$893,300

#540



The Albany A



Description

Welcome to The Albany! Inside and out, the Albany is the picture of luxury. Entertain your guests on the beautiful, covered deck or in the cozy keeping room, either are sure to impress. The main floor owner's suite showcases a spacious walk-in closet and ensuite bath.

BEDS
5

BATHS
4.5

SQ FT
4,253

PARKING
3



MAIN FLOOR PLAN



UPPER FLOOR PLAN



Shelton Square in Murfreesboro, TN

Call (615) 784-5735
DAVIDSONHOMESLLC.COM

The Albany A

Welcome to The Albany! Inside and out, the Albany is the picture of luxury. Entertain your guests on the beautiful, covered deck or in the cozy keeping room, either are sure to impress. The main floor owner's suite showcases a spacious walk-in closet and ensuite bath. Upstairs, the large loft space can be transformed to a media room, playroom, or something in between! Just down the hall, you'll find 4 additional bedrooms, each with their own walk-in closet, and the laundry room.

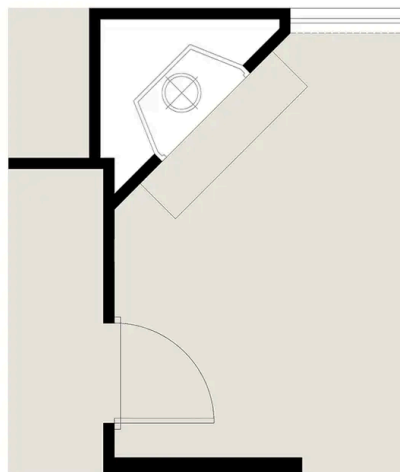
Make it your own with The Albany's flexible floor plan. Offerings vary by location, so please discuss your options with your community's agent.

BEDS
5

BATHS
4.5

SQ FT
4,253

GARAGE
3



OPT. OUTDOOR
FIREPLACE

PLAN OPTIONS

