

# Cain Park

Davidson Homes in Hartselle, AL

Welcome to Cain Park, a brand-new community built by Davidson Homes. Located just five minutes outside of downtown Hartselle, Cain Park offers an affordable and laidback lifestyle in a charming area.

Conveniently located between Huntsville, Decatur and Cullman, you'll have easy access to all three cities within 30 minutes or less. Plus, with easy access to I-65, commuting to work or running errands is a breeze.

## Features

Bonus Room Options  
Easy access to I-65  
Highly-rated Schools

## Local Schools

Hartselle City School District  
F. E. Burleson Elementary  
Hartselle Intermediate  
Hartselle Junior High  
Hartselle High

## Utilities

Electric: Joe Wheeler EMC  
Gas: Hartselle Utilities  
Water: Northeast Morgan ...



Community Address  
**502 Ronnie Dr.**

New Homes

**08**

Floor Plans

**14**

Homes from the

**\$240s**

Copyright 2024 Davidson Homes LLC | All Rights Reserved | Davidson Homes is a leading builder of quality new homes across the Southeast. Davidson Homes reserves the right to adjust items listed without prior notice or obligation. Such items may include, but are not limited to, options, included features and community information, pricing, amenities, square footage, terms or availability. Features, options, floor plans, elevations, colors, dimensions and photographs are for illustration purposes and may vary from homes built. Please see your community specialist for details. Equal housing lender. Last Updated 04/23/2024.





Cain Park in Hartselle, AL

## Quick Move-In Homes

Gabrielle Bili  
Call (256) 344-3352



UPDATED  
04/23/2024

HOMES  
08

COMMUNITY ADDRESS  
502 Ronnie Dr.



**\$429,900**

4 Beds 3.5 Baths 2,904 Sq Ft

1909 Rae Court | #37

The Rockford Plan



**\$244,900**

2 Beds 2 Baths 1,453 Sq Ft

404 Ronnie Drive | #1019

The Camilla B Plan



**\$239,900**

2 Beds 2 Baths 1,453 Sq Ft

410 Ronnie Drive | #1022

The Camilla C Plan

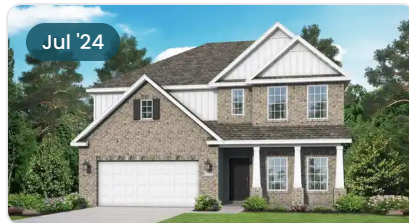


**\$407,996**

4 Beds 3.5 Baths 2,678 Sq Ft

600 Ronnie Drive | #5

The Harrison B Plan



**\$411,065**

4 Beds 3.5 Baths 2,769 Sq Ft

1901 Dawn Court | #34

The Chelsea C Plan



**\$446,614**

5 Beds 4 Baths 3,199 Sq Ft

1903 Rae Court | #40

The Madison B Plan



**\$381,185**

4 Beds 3 Baths 2,461 Sq Ft

1911 Dawn Court | #26

The Shelby A Plan



**\$338,456**

3 Beds 2.5 Baths 1,912 Sq Ft

1911 Rae Court | #36

The Montgomery Plan







Cain Park in Hartselle, AL

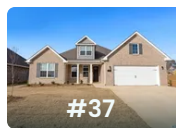
## Community Homesite Map

Gabrielle Bili  
Call (256) 344-3352



MOVE-IN READY QUICK MOVE-IN COMING SOON AVAILABLE SOLD

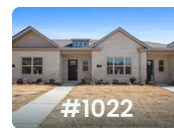
### Featured Homes for Sale



**The Rockford**  
1909 Rae Court  
**\$429,900**



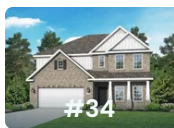
**The Camilla B**  
404 Ronnie Drive  
**\$244,900**



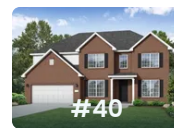
**The Camilla C**  
410 Ronnie Drive  
**\$239,900**



**The Harrison B**  
600 Ronnie Drive  
**\$407,996**



**The Chelsea C**  
1901 Dawn Court  
**\$411,065**



**The Madison B**  
1903 Rae Court  
**\$446,614**



**The Shelby A**  
1911 Dawn Court  
**\$381,185**



**The Montgomery**  
1911 Rae Court  
**\$338,456**

Copyright 2024 Davidson Homes LLC | All Rights Reserved | Davidson Homes is a leading builder of quality new homes across the Southeast. Davidson Homes reserves the right to adjust items listed without prior notice or obligation. Such items may include, but are not limited to, options, included features and community information, pricing, amenities, square footage, terms or availability. Features, options, floor plans, elevations, colors, dimensions and photographs are for illustration purposes and may vary from homes built. Please see your community specialist for details. Equal housing lender.



# The Camilla A



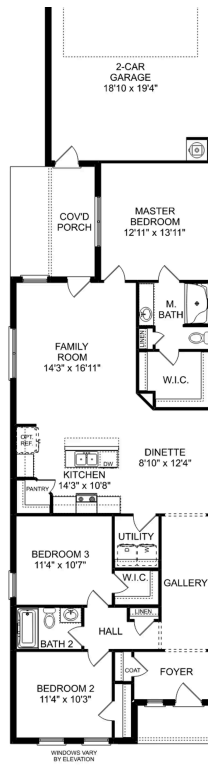
**BEDS**  
**2**

**BATHS**  
**2**

**SQ FT**  
**1,453**

**PARKING**  
**2**

## Exterior Options



**THE CAMILLA A TOWNHOME EXTERIOR UNIT**  
**FLOOR PLAN**



**THE CAMILLA A TOWNHOME INTERIOR UNIT**  
**FLOOR PLAN**



# The Montgomery



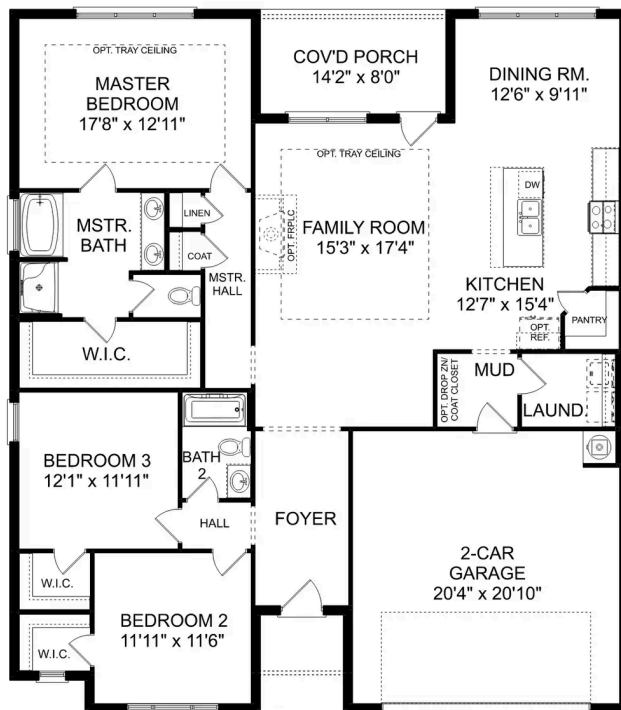
**BEDS**  
**3**

**BATHS**  
**2**

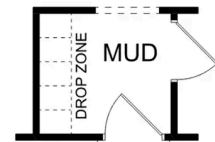
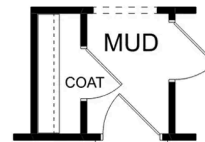
**SQ FT**  
**1,912**

**PARKING**  
**2**

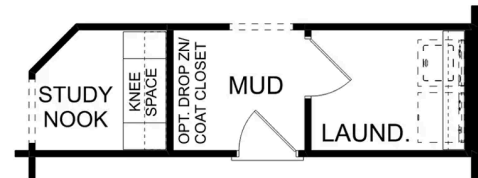
## Exterior Options



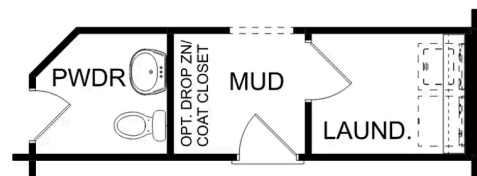
**THE MONTGOMERY**



OPT. COAT CLOSET OR DROP ZONE



OPT. STUDY NOOK



OPT. POWDER BATH

**THE MONTGOMERY OPTIONS**

# The Montgomery with Bo...

## Exterior Options

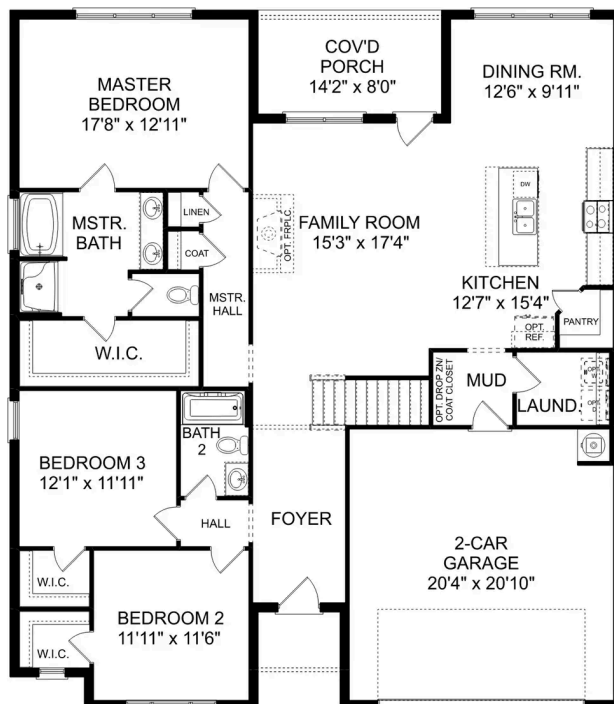


**BEDS**  
**3**

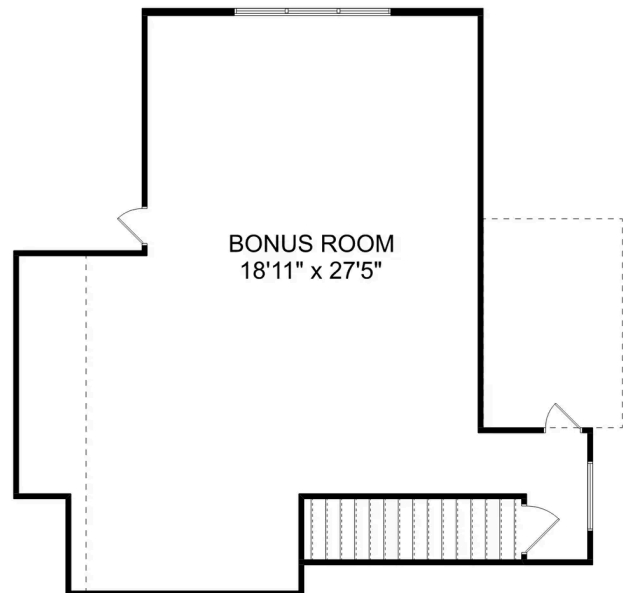
**BATHS**  
**2**

**SQ FT**  
**2,684**

**PARKING**  
**2**



THE MONTGOMERY BONUS MAIN FLOOR



THE MONTGOMERY BONUS UPPER FLOOR



## The Montgomery with Bonus

With modern touches like an open-concept, homeowner-centric layout, The Montgomery is one-level living at its finest. The kitchen showcases a huge island, corner pantry and stainless-steel appliances. The plan's open family room is perfect for entertaining guests, and the covered porch is easily accessible. Discover the plan's impressive Master Suite, complete with bright, inviting windows and a huge walk-in closet.

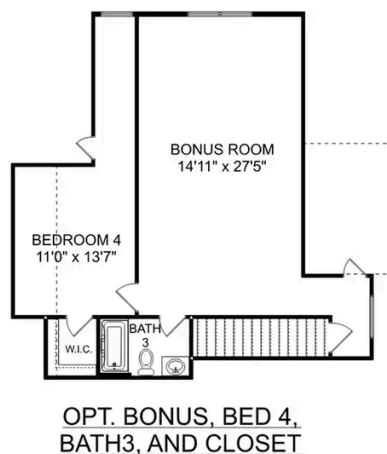
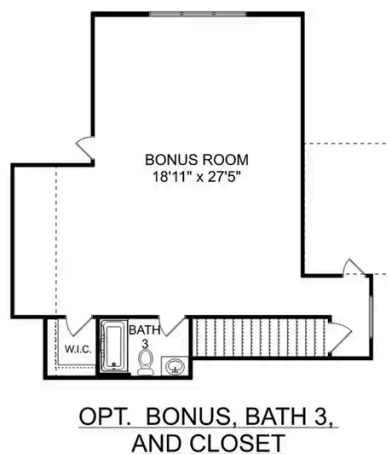
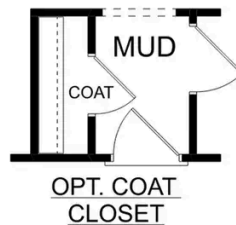
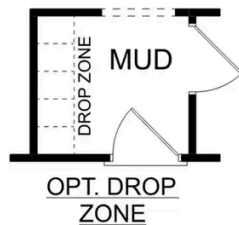
Make it your own with The Montgomery's flexible floor plan, featuring an optional bonus room, a covered porch and more! Just know that offerings vary by location, so please discuss our standard features and upgrade options with your community's agent.

BEDS  
**3**

BATHS  
**2**

SQ FT  
**2,684**

GARAGE  
**2**



### THE MONTGOMERY BONUS OPTIONS

# The Kirkland



## Description

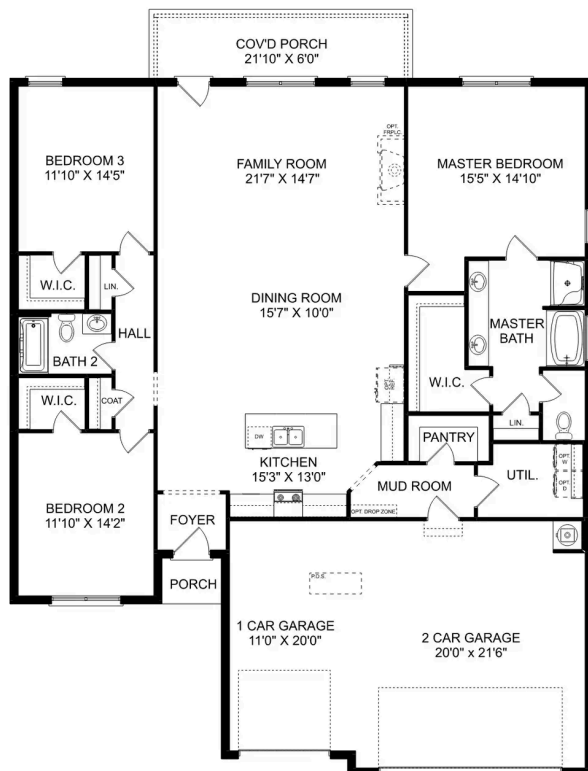
Behind the Kirkland's lovely, full-brick exterior lies a beautiful home. The foyer immediately opens up into a stunning, open-concept living space, combining the dining room, family room and kitchen.

**BEDS**  
**3**

**BATHS**  
**2**

**SQ FT**  
**2,076**

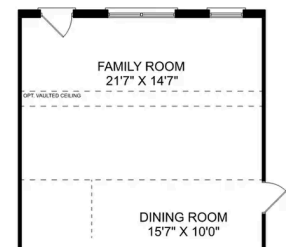
**PARKING**  
**3**



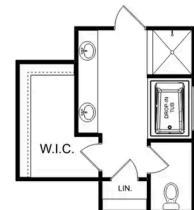
**THE KIRKLAND**



**OPTIONAL TRAY  
CEILING**



**OPTIONAL VAULTED  
CEILING**



**OPTIONAL LUXURY  
MASTER BATH**

**THE KIRKLAND OPTIONS**



# The Kirkland with Bonus



## Description

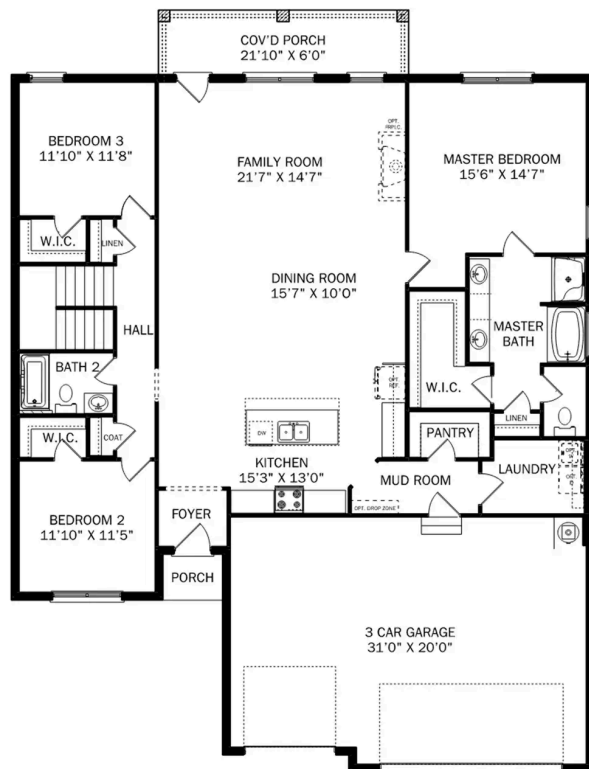
Behind the Kirkland's lovely, full-brick exterior lies a beautiful home. The foyer immediately opens up into a stunning, open-concept living space, combining the dining room, family room and kitchen.

**BEDS**  
**3**

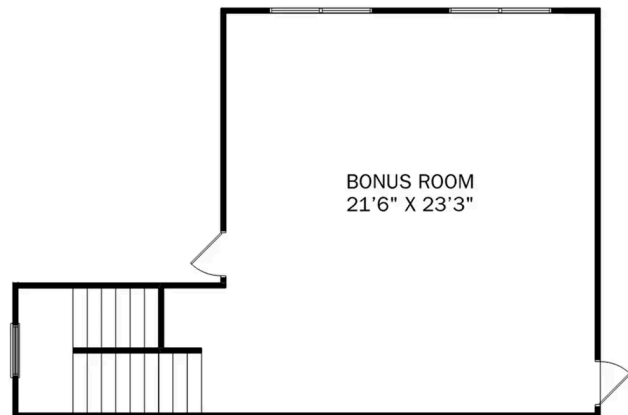
**BATHS**  
**2**

**SQ FT**  
**2,767**

**PARKING**  
**3**



**THE KIRKLAND BONUS MAIN FLOOR**



**THE KIRKLAND BONUS UPPER FLOOR**

## The Kirkland with Bonus

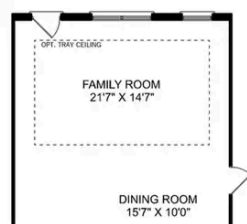
Behind the Kirkland's lovely, full-brick exterior lies a beautiful home. The foyer immediately opens up into a stunning, open-concept living space, combining the dining room, family room and kitchen. From the stunning island to its endless counterspace, the kitchen is perfect for entertaining, and the covered porch is always ready to take the party outside. The Master Suite features a lovely, bright bedroom and Master Bath, complete with shower, bathtub and walk-in closet.

BEDS  
**3**

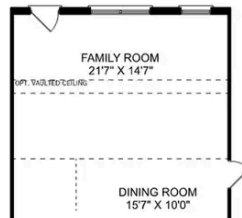
BATHS  
**2**

SQ FT  
**2,767**

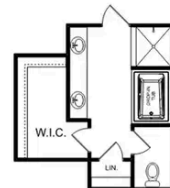
GARAGE  
**3**



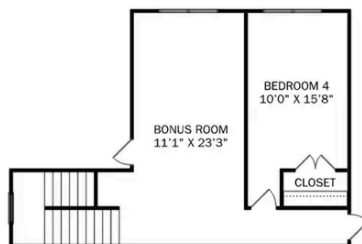
OPTIONAL TRAY  
CEILING



OPTIONAL VAULTED  
CEILING



OPTIONAL LUXURY  
MASTER BATH



OPTIONAL BEDROOM 5



OPTIONAL BATH 3

### THE KIRKLAND BONUS OPTIONS





Cain Park in Hartselle, AL

Call (256) 344-3352  
DAVIDSONHOMESLLC.COM

## The Rockford



### Exterior Options

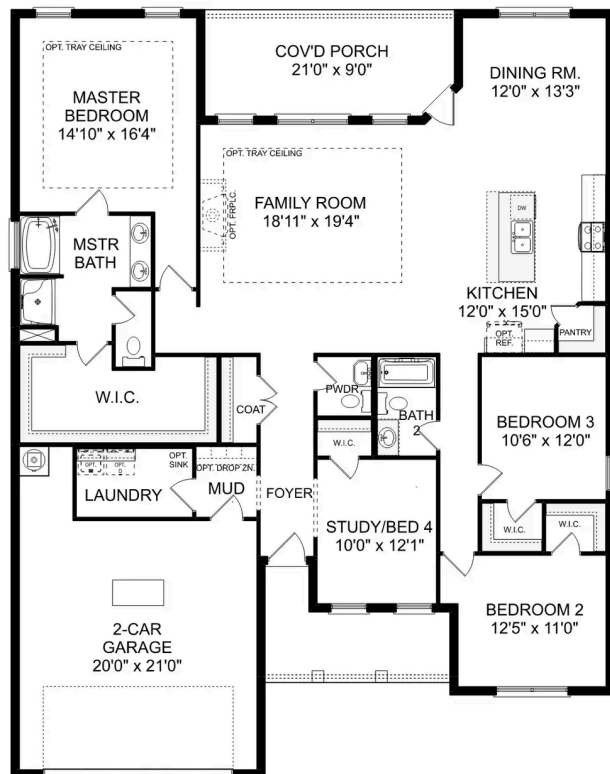


**BEDS**  
**3**

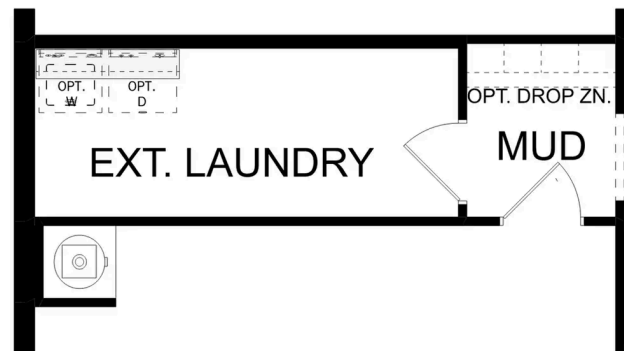
**BATHS**  
**2.5**

**SQ FT**  
**2,286**

**PARKING**  
**2**



THE ROCKFORD



OPT. EXTENDED LAUNDRY  
ADDS 30 HEATED S.F.

THE ROCKFORD OPTIONS

Copyright 2024 Davidson Homes LLC | All Rights Reserved | Davidson Homes is a leading builder of quality new homes across the Southeast. Davidson Homes reserves the right to adjust items listed without prior notice or obligation. Such items may include, but are not limited to, options, included features and community information, pricing, amenities, square footage, terms or availability. Features, options, floor plans, elevations, colors, dimensions and photographs are for illustration purposes and may vary from homes built. Please see your community specialist for details. Equal housing lender. Last updated 07/27/2023.



## The Rockford with Bonus

### Exterior Options

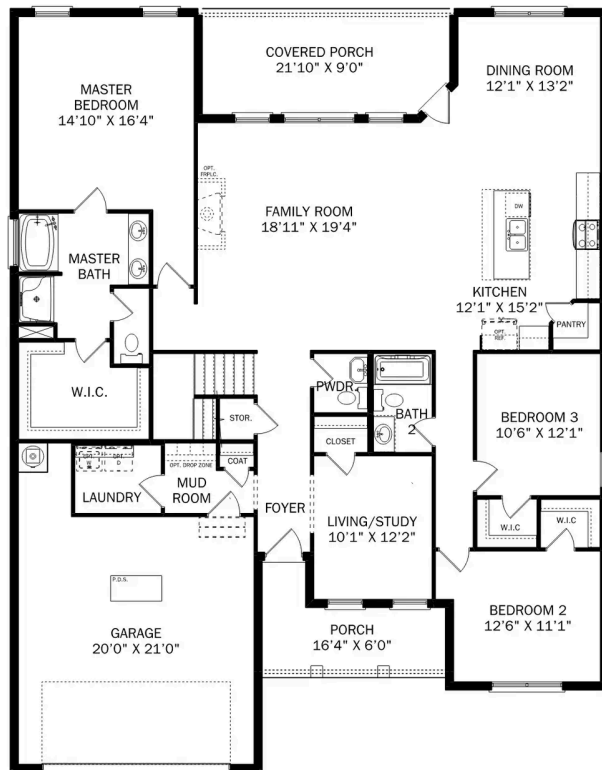


**BEDS**  
**3**

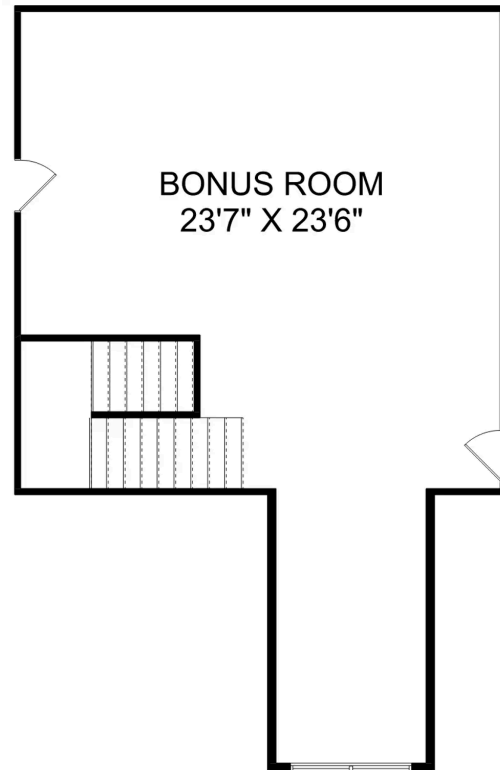
**BATHS**  
**2.5**

**SQ FT**  
**2,904**

**PARKING**  
**2**



THE ROCKFORD BONUS MAIN FLOOR



THE ROCKFORD BONUS UPPER FLOOR



## The Rockford with Bonus

With its charming, full-brick exterior, it's no wonder why The Rockford's our best-selling floor plan! A wall of windows floods the family room with natural light, and the kitchen invites you to cook – welcoming you with an oversized island, stainless-steel appliances and a large corner pantry. The isolated Master Suite features plenty of room and a massive walk-in closet.

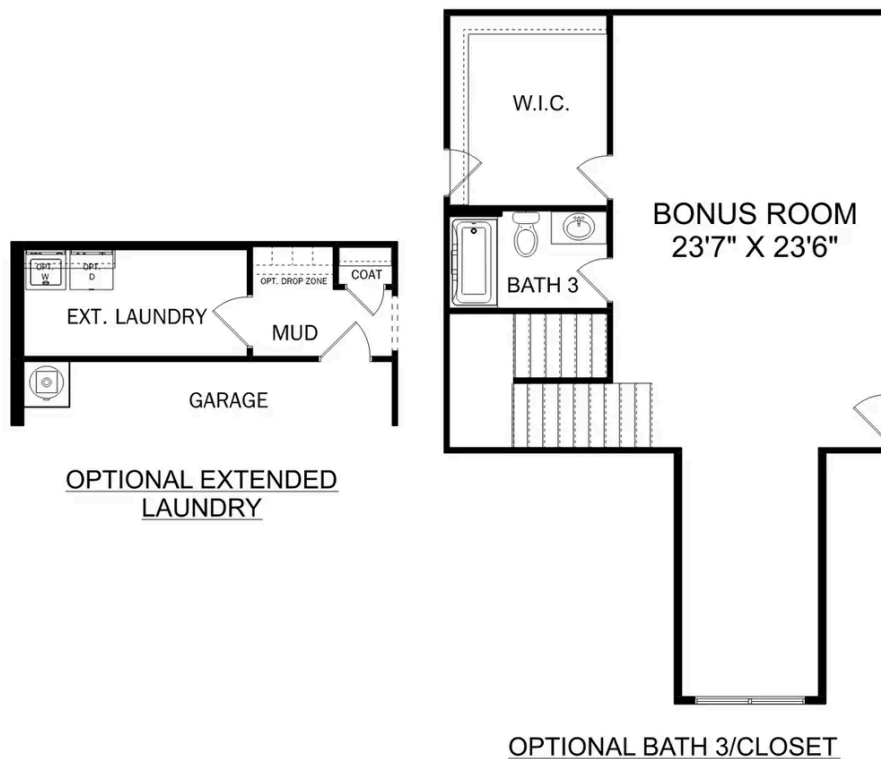
Make it your own with The Rockford's flexible floor plan, and consider replacing the home office with a fourth bedroom. It's your choice. Just know that offerings vary by location, so please discuss our standard features and upgrade options with your community's agent.

BEDS  
**3**

BATHS  
**2.5**

SQ FT  
**2,904**

GARAGE  
**2**



OPTIONAL BATH 3/CLOSET

### THE ROCKFORD OPTIONS

# The Lanier



## Description

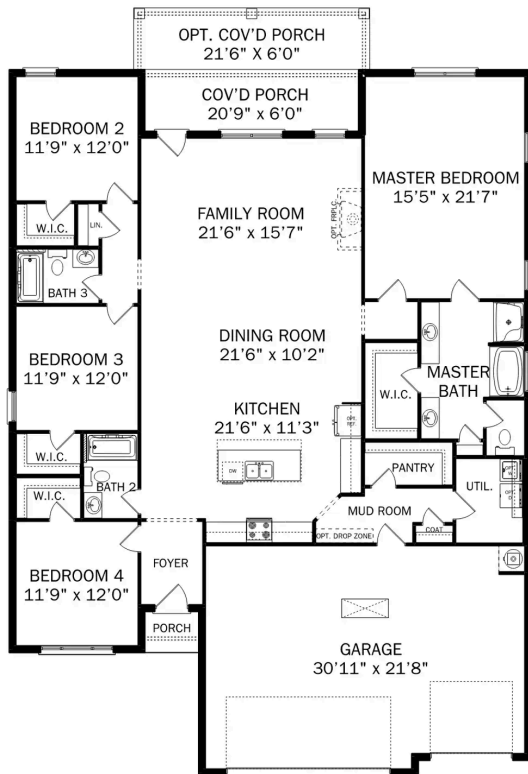
Within The Lanier's charming, full-brick exterior lies four bedrooms and plenty of space. The three-car garage leads into the home's mud room. The kitchen features a large pantry, double-sided island and more than enough counter space. Once there you'll discover the home's biggest feature – the huge, open-concept layout.

**BEDS**  
**4**

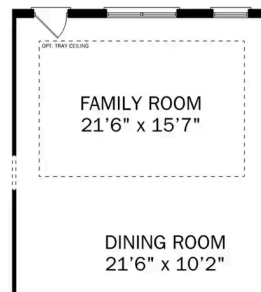
**BATHS**  
**3**

**SQ FT**  
**2,411**

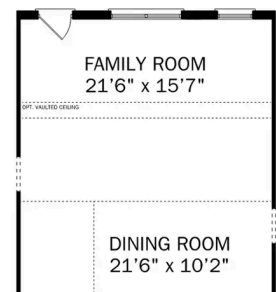
**PARKING**  
**3**



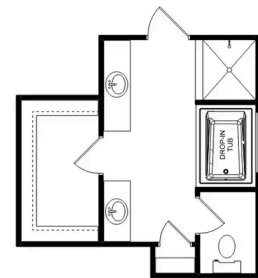
**THE LANIER**



**OPTIONAL TRAY  
CEILING**



**OPTIONAL VAULTED  
CEILING**



**OPTIONAL LUXURY  
MASTER BATH**

**THE LANIER OPTIONS**

# The Shelby A

## Exterior Options

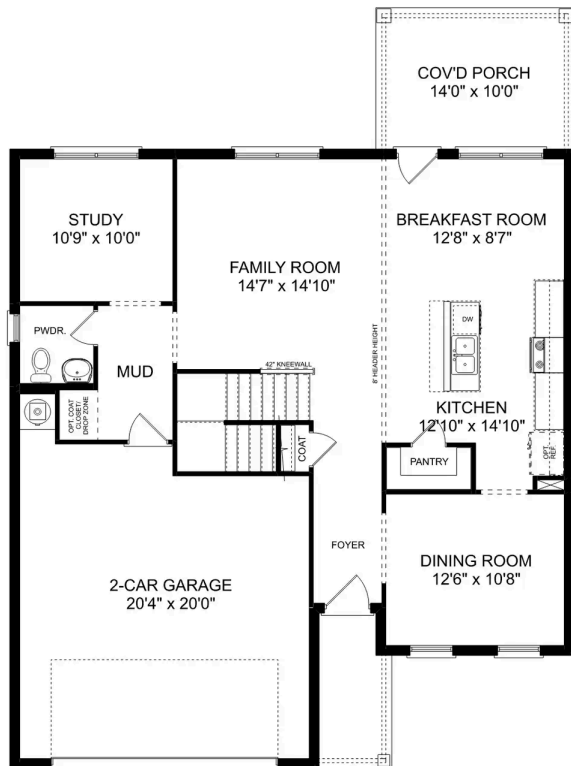


**BEDS**  
**3**

**BATHS**  
**2.5**

**SQ FT**  
**2,452**

**PARKING**  
**2**



**MAIN FLOOR**



**UPPER FLOOR**



## The Shelby A

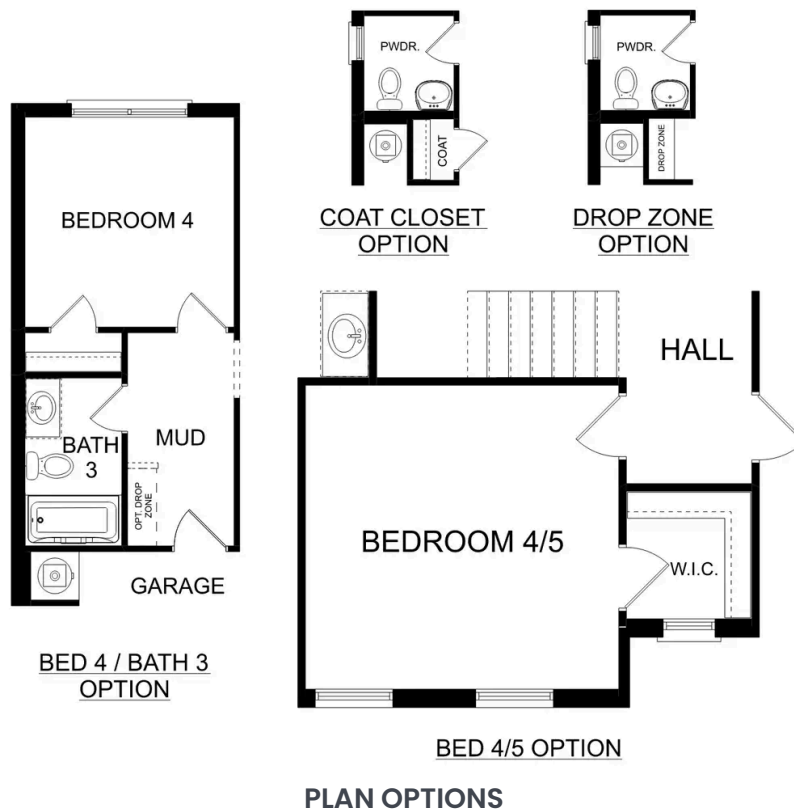
The Shelby welcomes you into a modern, open space, complete with a formal dining room and study. The kitchen overlooks an open-concept family room. The second floor features a spacious master bedroom with a large walk-in closet and master bath along with two additional bedrooms with ample walk-in closets of their own.

BEDS  
**3**

BATHS  
**2.5**

SQ FT  
**2,452**

GARAGE  
**2**



# The Harrison



## Exterior Options

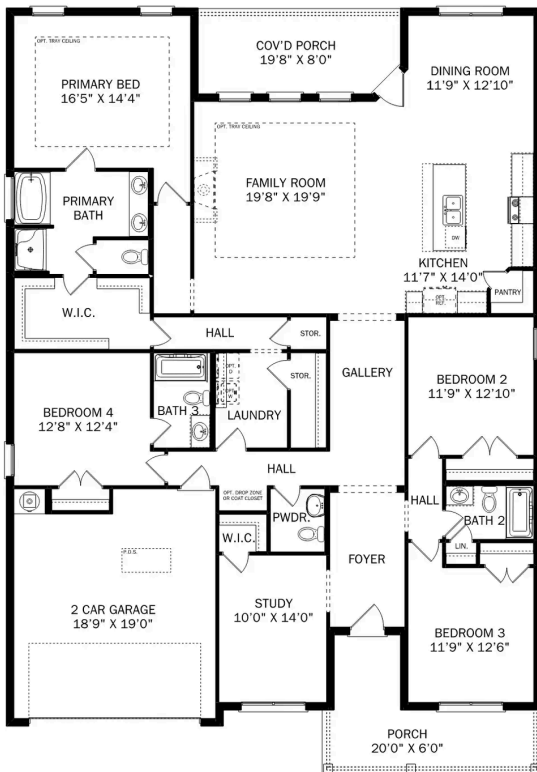


**BEDS**  
**4**

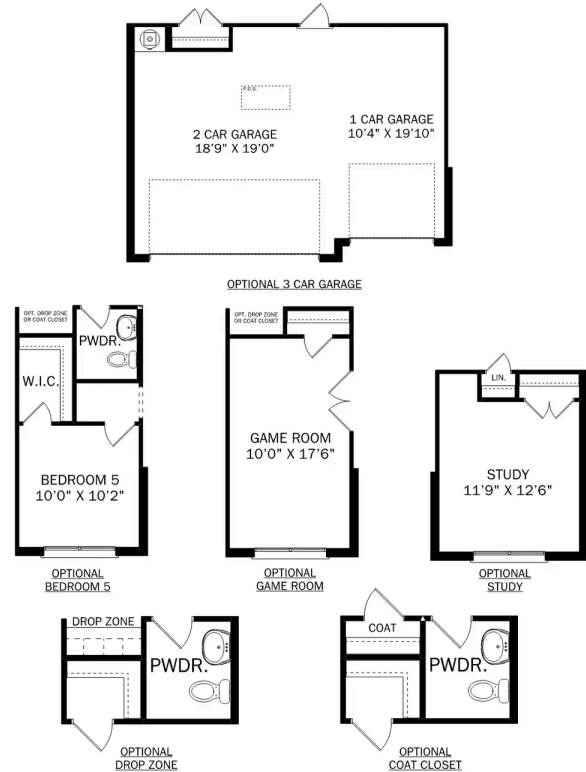
**BATHS**  
**3.5**

**SQ FT**  
**2,678**

**PARKING**  
**2**



**THE HARRISON**



**THE HARRISON OPTIONS**

# The Harrison with Bonus



## Description

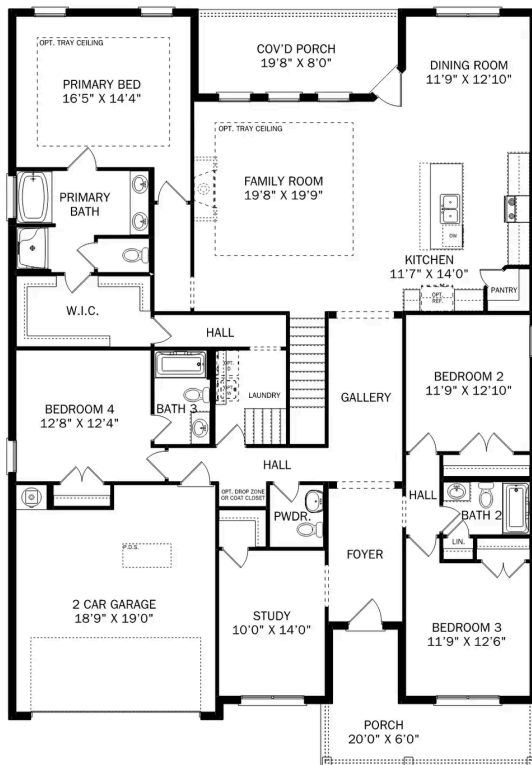
From its charming brick exterior to its open-concept kitchen/family room, The Harrison is perfect for entertaining. Its large kitchen island invites guests to pull up a chair, and its four spacious bedrooms ensure everyone has enough room.

**BEDS**  
**4**

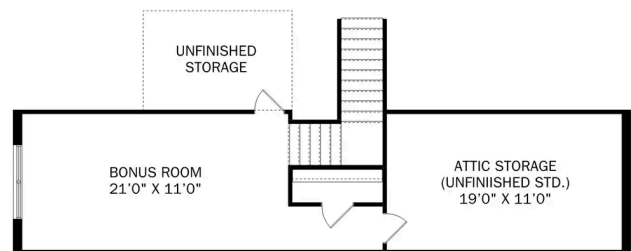
**BATHS**  
**3.5**

**SQ FT**  
**2,992**

**PARKING**  
**2**



THE HARRISON BONUS MAIN FLOOR



THE HARRISON BONUS UPPER FLOOR



## The Harrison with Bonus

From its charming brick exterior to its open-concept kitchen/family room, The Harrison is perfect for entertaining. Its large kitchen island invites guests to pull up a chair, and its four spacious bedrooms ensure everyone has enough room. The downstairs study offers a brief respite from the hustle and bustle, and the covered porch welcomes your family to grill and relax.

The Master Suite steals the show as its windows cast warm, natural light across the large room. The large walk-in closet is ready to handle your wardrobe, and the adjoining storage closet leads right into the laundry room – making laundry day significantly easier.

BEDS  
**4**

BATHS  
**3.5**

SQ FT  
**2,992**

GARAGE  
**2**



THE HARRISON BONUS OPTIONS

# The Chelsea A

## Exterior Options

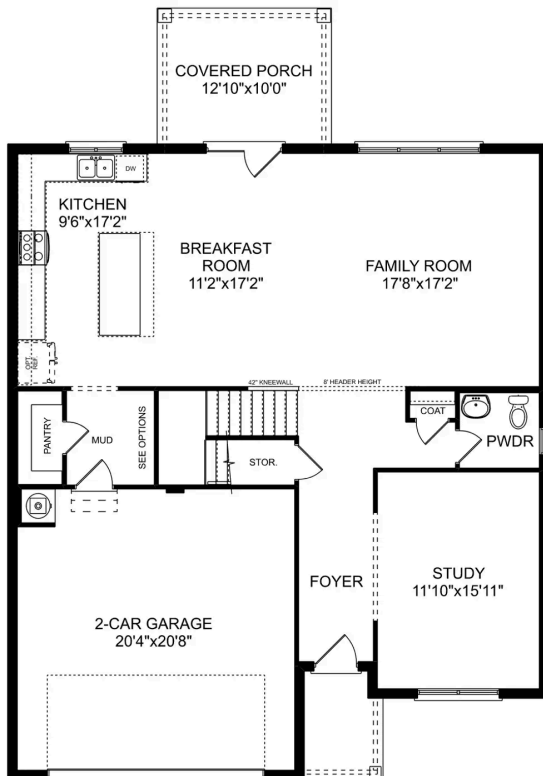


**BEDS**  
**4**

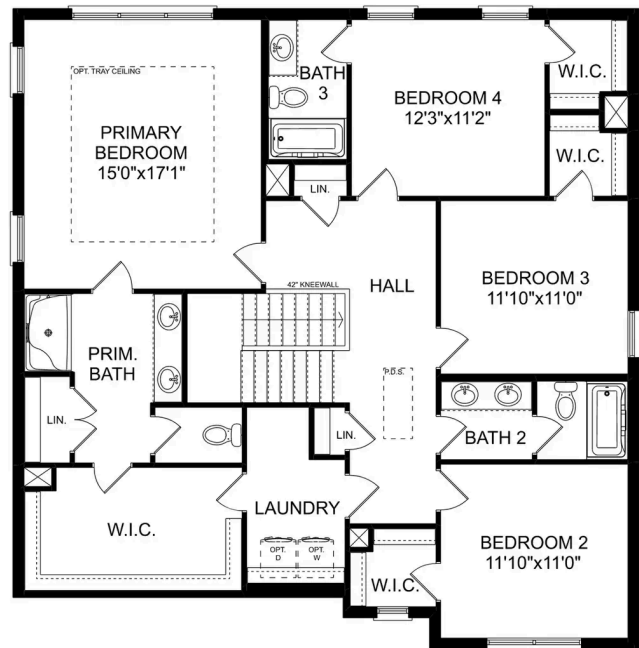
**BATHS**  
**3.5**

**SQ FT**  
**2,769**

**PARKING**  
**2**



**MAIN FLOOR**



**UPPER FLOOR**

## The Chelsea A

The Chelsea's windows fill the open floor plan with natural light, welcoming you into this charming home. The kitchen showcases ample counterspace, overlooking the breakfast and family room. A large study on the first floor offers potential, and the home's second floor features four bedrooms, each with plenty of closet space. The master bedroom is separate from the other bedrooms for added privacy, and the fourth bedroom features its own private bath.

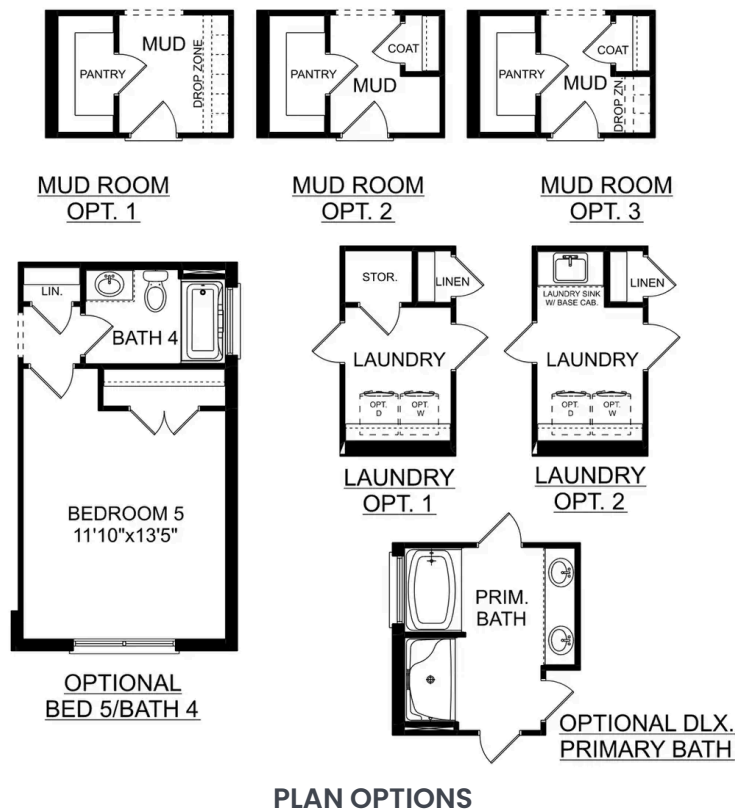
Make it your own with The Chelsea's flexible floor plan. Offerings vary by location, so please discuss your options with your community's agent.

BEDS  
**4**

BATHS  
**3.5**

SQ FT  
**2,769**

GARAGE  
**2**





# The Madison A

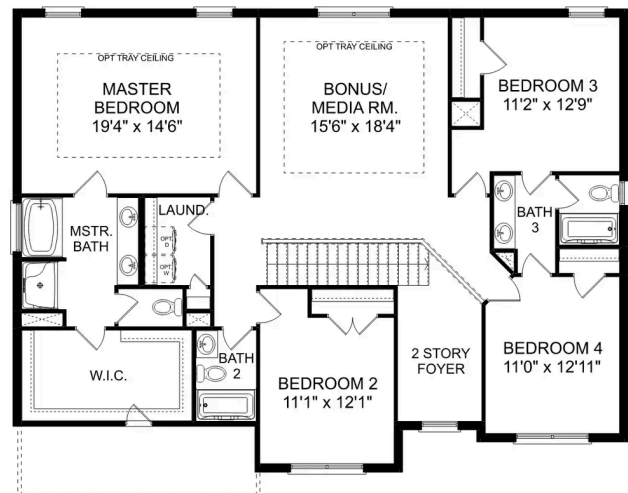
## Exterior Options



|             |              |              |                |
|-------------|--------------|--------------|----------------|
| <b>BEDS</b> | <b>BATHS</b> | <b>SQ FT</b> | <b>PARKING</b> |
| <b>5</b>    | <b>4</b>     | <b>3,199</b> | <b>2</b>       |



THE MADISON MAIN FLOOR



THE MADISON UPPER FLOOR

## The Madison A

Behind the Madison's gorgeous brick exterior lies a massive layout, featuring five bedrooms, an elegant dining room and a welcoming study. From the designer kitchen's stainless-steel appliances to its oversized island, you'll want to make all your meals at home. The upstairs bonus room is perfect for family movie nights, and the Master Suite features a huge walk-in closet!

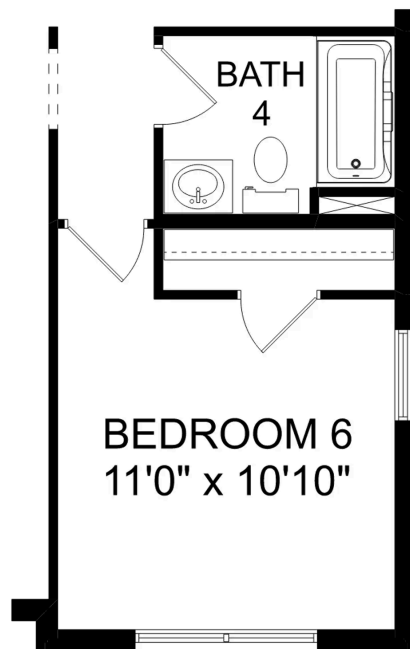
Make it your own with The Madison's flexible floor plan. Just know that offerings vary by location, so please discuss our standard features and upgrade options with your community's agent.

BEDS  
**5**

BATHS  
**4**

SQ FT  
**3,199**

GARAGE  
**2**



### OPT. BEDROOM 6

#### THE MADISON OPTIONS



Cain Park in Hartselle, AL

Call (256) 344-3352  
DAVIDSONHOMESLLC.COM

## The Emory



### Description

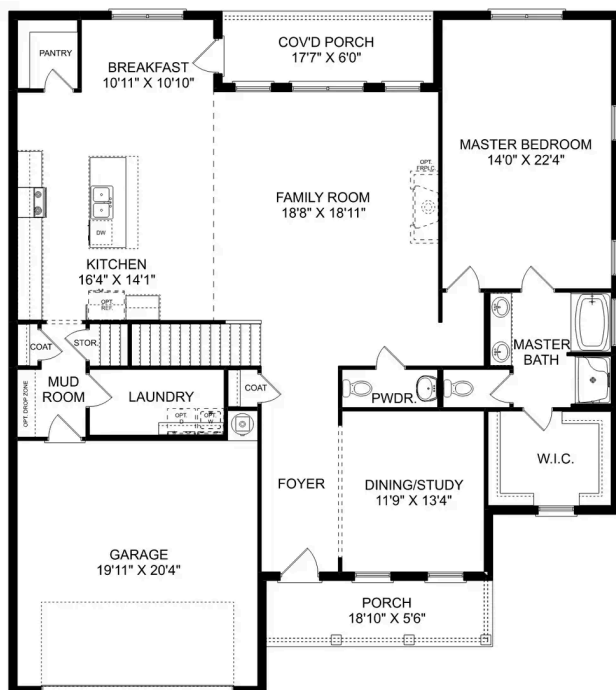
Enter The Emory, and you'll immediately discover why it's one of our most-loved plans. From its elegant dining room to its covered porch, this home has everything you need – and more! The designer kitchen features an oversized island, and the open-concept layout makes The Emory feel even larger.

**BEDS**  
**4**

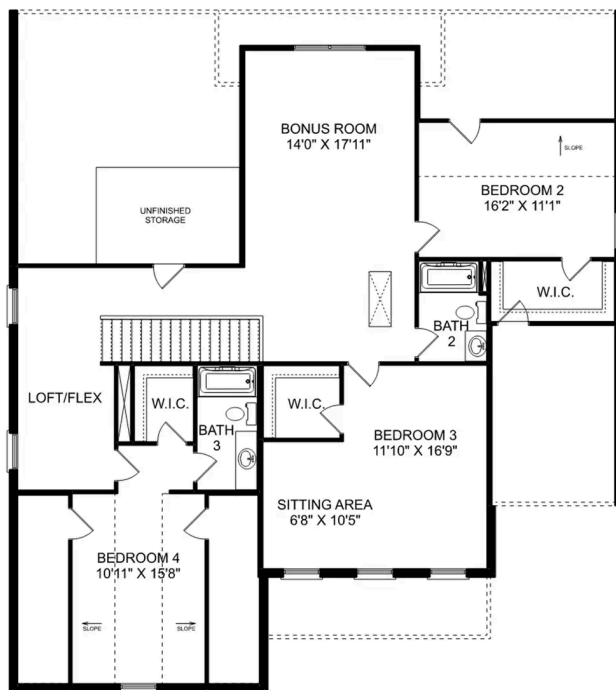
**BATHS**  
**3.5**

**SQ FT**  
**3,563**

**PARKING**  
**2**



THE EMORY MAIN FLOOR



THE EMORY UPPER FLOOR

Copyright 2024 Davidson Homes LLC | All Rights Reserved | Davidson Homes is a leading builder of quality new homes across the Southeast. Davidson Homes reserves the right to adjust items listed without prior notice or obligation. Such items may include, but are not limited to, options, included features and community information, pricing, amenities, square footage, terms or availability. Features, options, floor plans, elevations, colors, dimensions and photographs are for illustration purposes and may vary from homes built. Please see your community specialist for details. Equal housing lender. Last updated 03/07/2023.

