

The Village at Shallowford

Davidson Homes in Kennesaw, GA

Welcome to The Village at Shallowford, a new community brought to you by Davidson Homes in Kennesaw, GA. Our expertly crafted single-family homes offer five different floor plans to choose from, each designed with your unique lifestyle in mind. Attention to detail is evident throughout each home, ensuring that your living experience is exceptional.

The Village at Shallowford is situated in an ideal location, just moments away from the most vibrant shopping, dining, and entertainment options in the area. You'll appreciate the convenience of easy access to major highways and nearby Cobb County Schools.

Features

Gated Community
Five Single-Family Plans
Pool and Clubhouse

Local Schools

Nicholson Elementary
McCleskey Middle
Kell High

Utilities

Water: Cobb County Water
Electric: Cobb EMC



Community Address

Shallowford Road & Jamerson Road Nort...

New Homes

07

Floor Plans

05

Homes from the

\$480s

Copyright 2024 Davidson Homes LLC | All Rights Reserved | Davidson Homes is a leading builder of quality new homes across the Southeast. Davidson Homes reserves the right to adjust items listed without prior notice or obligation. Such items may include, but are not limited to, options, included features and community information, pricing, amenities, square footage, terms or availability. Features, options, floor plans, elevations, colors, dimensions and photographs are for illustration purposes and may vary from homes built. Please see your community specialist for details. Equal housing lender. Last Updated 04/24/2024.





The Village at Shallowford in Kennesaw, GA

Quick Move-In Homes

Anne C. & Matrina D.

Call (678) 999-8735

UPDATED

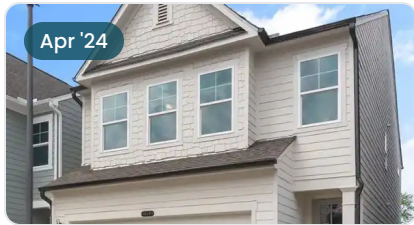
04/24/2024

HOMES

07

COMMUNITY ADDRESS

Shallowford Road & Jamerson Road Northeast



\$502,070

3 Beds 2.5 Baths 2,046 Sq Ft

4649 Amethyst Cove | #12

The Marion B Plan

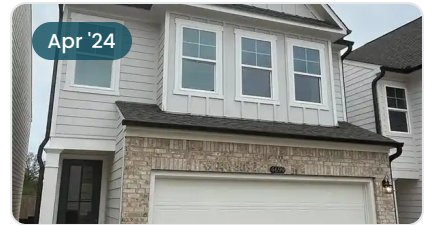


\$494,420

3 Beds 2.5 Baths 2,046 Sq Ft

4715 Canary Diamond Lane | #25

The Marion A Plan

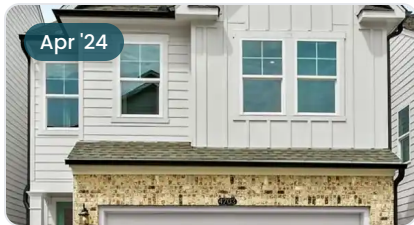


\$495,500

3 Beds 2.5 Baths 2,046 Sq Ft

4699 Canary Diamond Lane | #29

The Marion A Plan



\$508,960

3 Beds 2.5 Baths 2,008 Sq Ft

4703 Canary Diamond Lane | #28

The Cary A Plan



\$622,300

5 Beds 4 Baths 2,655 Sq Ft

4714 Canary Diamond Lane | #84

The Hickory C at Shallowford Plan



\$538,748

4 Beds 3.5 Baths 2,233 Sq Ft

675 Smokey Quartz Way | #82

The Gavin F Plan



\$532,771

4 Beds 3.5 Baths 2,233 Sq Ft

679 Smokey Quartz Way | #81

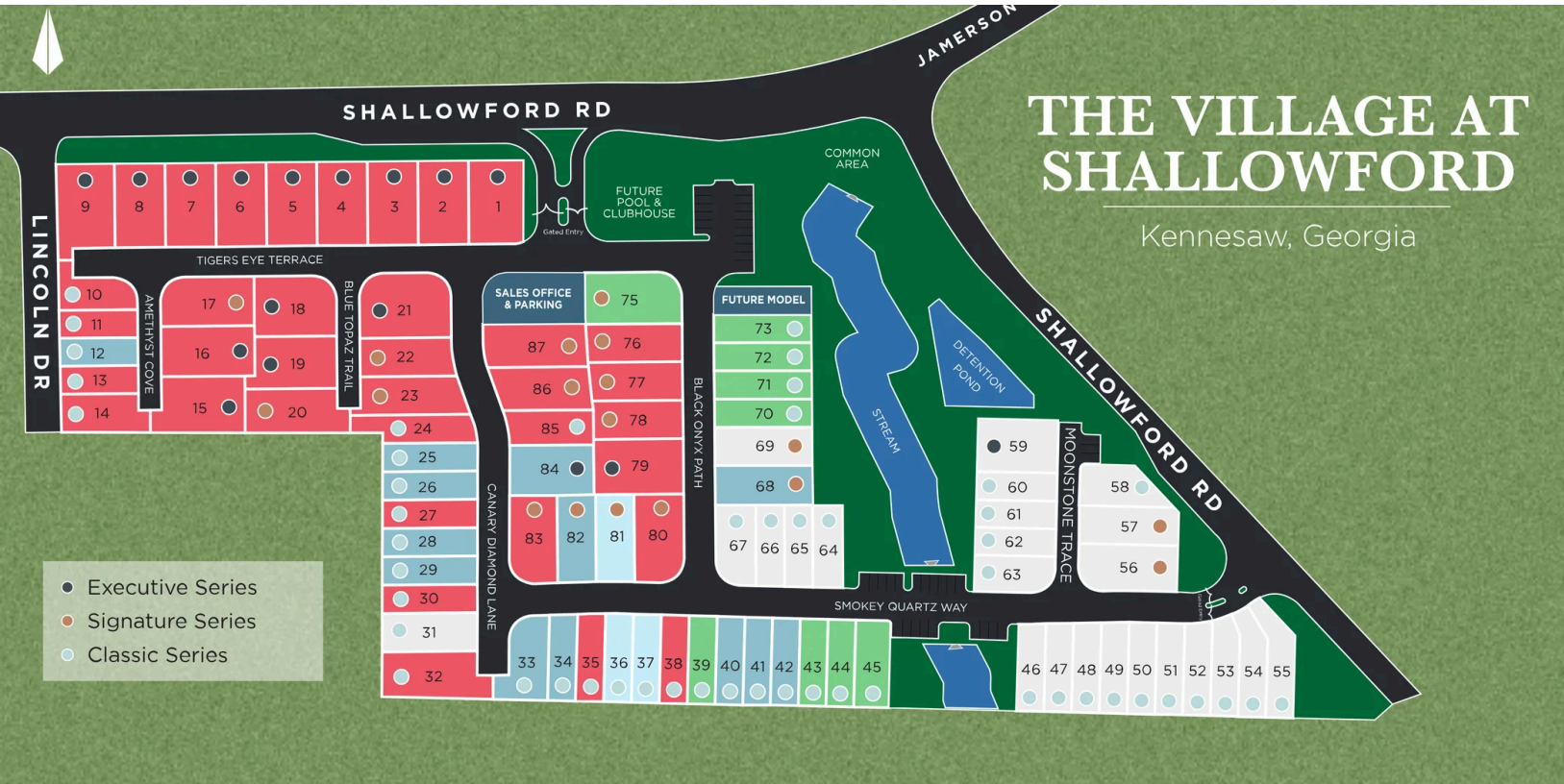
The Gavin E Plan





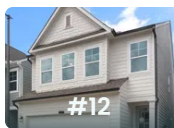
The Village at Shallowford in Kennesaw, GA Community Homesite Map

Anne C. & Matrina D.
Call (678) 999-8735

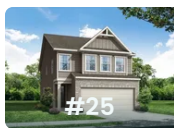


MOVE-IN READY QUICK MOVE-IN COMING SOON AVAILABLE SOLD

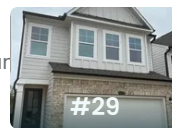
Featured Homes for Sale



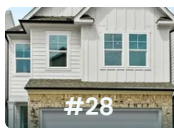
The Marion B
4649 Amethyst Cove
\$502,070



The Marion A
4715 Canary Diamond Lane
\$494,420



The Marion A
4699 Canary Diamond Lane
\$495,500



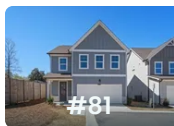
The Cary A
4703 Canary Diamond Lane
\$508,960



The Hickory C at Shallowford
4714 Canary Diamond Lane
\$622,300



The Gavin F
675 Smokey Quartz Way
\$538,748



The Gavin E
679 Smokey Quartz Way
\$532,771





The Village at Shallowford in Kennesaw, GA

Call (678) 999-8735
DAVIDSONHOMESLLC.COM

The Cary A

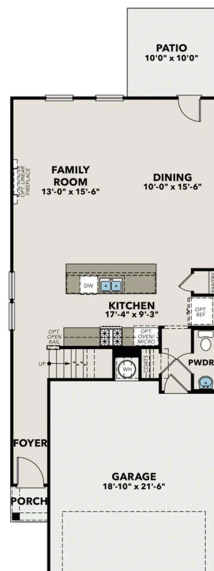


BEDS
3

BATHS
2.5

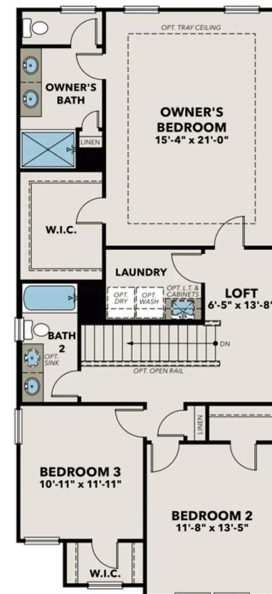
SQ FT
2,008

PARKING
2



THE VILLAGE AT
SHALLOWFORD CARY
FIRST FLOOR

CARY FIRST FLOOR



THE VILLAGE AT
SHALLOWFORD CARY
SECOND FLOOR

CARY SECOND FLOOR

Copyright 2024 Davidson Homes LLC | All Rights Reserved | Davidson Homes is a leading builder of quality new homes across the Southeast. Davidson Homes reserves the right to adjust items listed without prior notice or obligation. Such items may include, but are not limited to, options, included features and community information, pricing, amenities, square footage, terms or availability. Features, options, floor plans, elevations, colors, dimensions and photographs are for illustration purposes and may vary from homes built. Please see your community specialist for details. Equal housing lender. Last updated 04/19/2024.





The Village at Shallowford in Kennesaw, GA

Call (678) 999-8735
DAVIDSONHOMESLLC.COM

The Marion A

Exterior Options

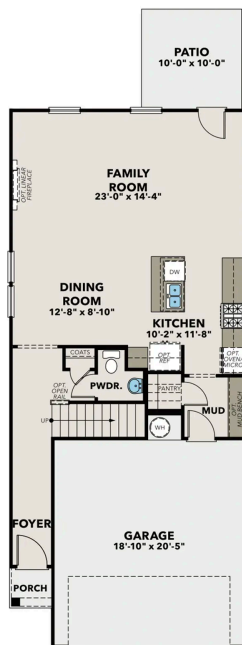


BEDS
3

BATHS
2.5

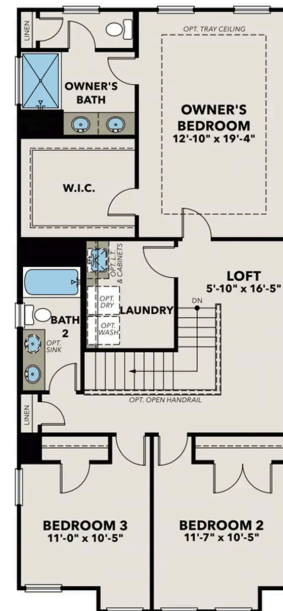
SQ FT
2,046

PARKING
2



THE VILLAGE AT
SHALLOWFORD MARION
FIRST FLOOR

MARION FIRST FLOOR



THE VILLAGE AT
SHALLOWFORD MARION
SECOND FLOOR

MARION SECOND FLOOR

Copyright 2024 Davidson Homes LLC | All Rights Reserved | Davidson Homes is a leading builder of quality new homes across the Southeast. Davidson Homes reserves the right to adjust items listed without prior notice or obligation. Such items may include, but are not limited to, options, included features and community information, pricing, amenities, square footage, terms or availability. Features, options, floor plans, elevations, colors, dimensions and photographs are for illustration purposes and may vary from homes built. Please see your community specialist for details. Equal housing lender. Last updated 02/29/2024.



The Gavin E



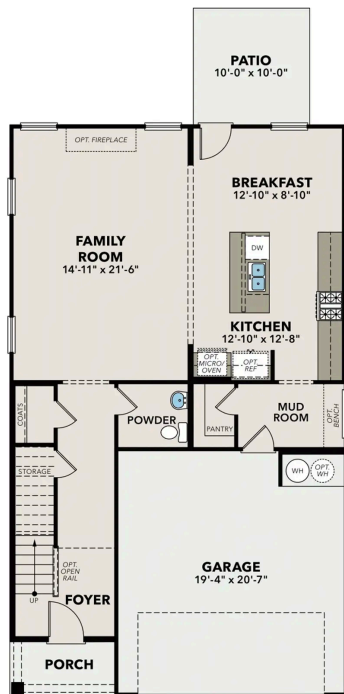
BEDS
3

BATHS
2.5

SQ FT
2,233

PARKING
2

Exterior Options



THE VILLAGE AT SHALLOWFORD GAVIN
FIRST FLOOR

THE GAVIN FIRST FLOOR



THE VILLAGE AT SHALLOWFORD GAVIN
SECOND FLOOR

THE GAVIN SECOND FLOOR

The Gavin E

With the Gavin plan, you will find a spacious, open-concept home design you are sure to love. The first floor features a large family room, kitchen with walk-in pantry and mudroom, and a cozy breakfast area. Upstairs leads you to the loft, two secondary bedrooms and the pocket office. The Oversized owner's suite features an expansive walk-in closet and is located conveniently next to the laundry room.

Make it your own with The Gavin's flexible floor plan! Offers vary by location, so please discuss with your options with our New Home Consultant.

BEDS
3

BATHS
2.5

SQ FT
2,233

GARAGE
2



THE GAVIN OPTIONS

The Willow B at Shallowfo... Exterior Options

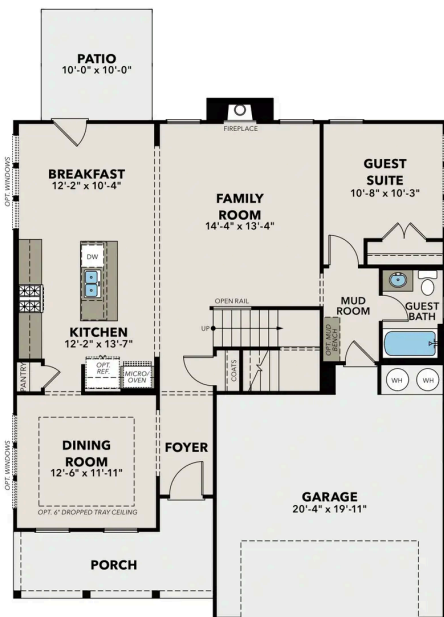


BEDS
4

BATHS
4

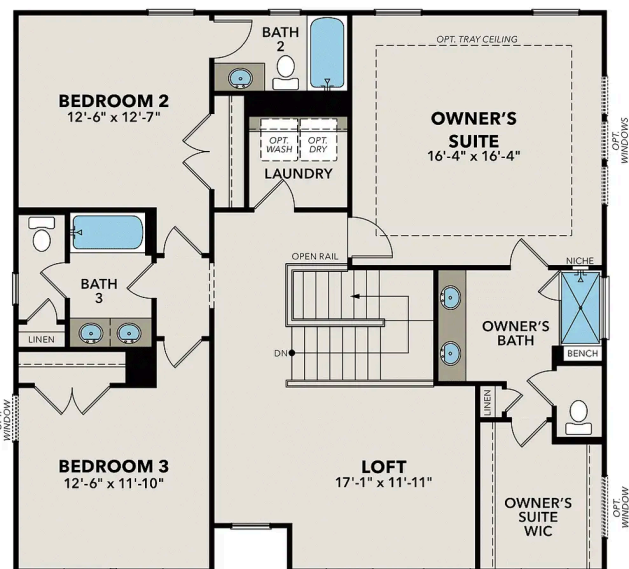
SQ FT
2,506

PARKING
2



**THE VILLAGE AT SHALLOWFORD WILLOW
FIRST FLOOR PLAN**

WILLOW MAIN FLOOR PLAN



WILLOW UPPER FLOOR PLAN

The Willow B at Shallowford

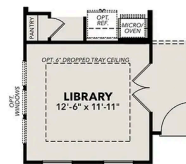
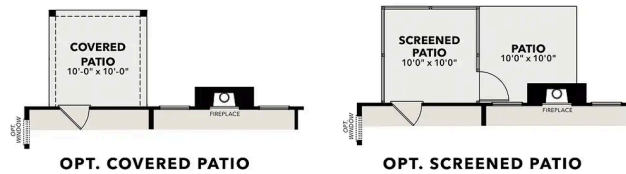
The Willow's impressive front porch welcomes you into a modern, open space, complete with a formal dining room and guest suite. The kitchen overlooks an open-concept family room. The second floor features a spacious owner's suite with a large walk-in closet and owner's bath along with two additional bedrooms.

BEDS
4

BATHS
4

SQ FT
2,506

GARAGE
2



OPT. LIBRARY IN LIEU OF DINING



OPT. BEDROOM 4 IN LIEU OF LOFT

WILLOW OPTIONS

The Hickory A at Shallowf...

Exterior Options

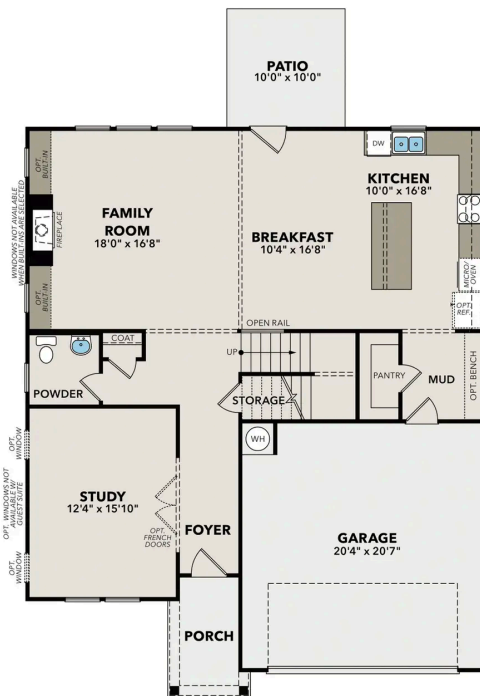


BEDS
4

BATHS
3.5

SQ FT
2,655

PARKING
2



**THE VILLAGE AT SHALLOWFORD HICKORY
FIRST FLOOR PLAN**



**THE VILLAGE AT SHALLOWFORD HICKORY
SECOND FLOOR PLAN**

THE HICKORY MAIN FLOOR PLAN

THE HICKORY SECOND FLOOR PLAN

The Hickory A at Shallowford

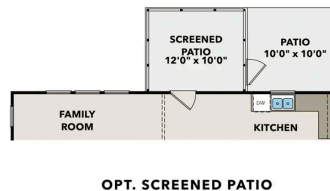
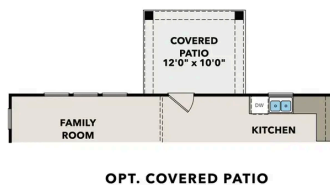
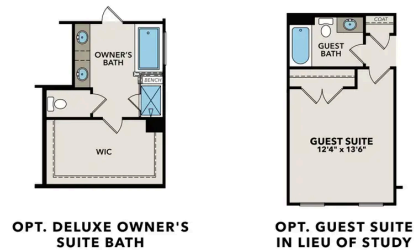
The Hickory's windows fill the open floor plan with natural light, welcoming you into this charming home. The kitchen showcases ample counter space, overlooking the breakfast and family room. A large study on the first floor offers potential, and the home's second floor features four bedrooms, each with their own walk-in closet. The Owner's Suite is separate from the other bedrooms for added privacy and showcases a spacious en suite bathroom.

BEDS
4

BATHS
3.5

SQ FT
2,655

GARAGE
2



HICKORY OPTIONS