

# Durham Farms

## Davidson Homes in Harvest, AL

Welcome to Davidson Homes, a regional home builder in the beautiful city of Harvest, Alabama. Our focus is on creating functional and stylish homes in desirable communities like Durham Farms. This community offers full-brick ranch and brick-and-vinyl two-story homes with easy access to Wall Triana and Ardmore Highways.

### Features

Open-Concept Floor Plans

### Local Schools

Madison County School Di...  
Harvest Elementary  
Sparkman Middle  
Sparkman High

### Utilities

Electric: Huntsville Utilities  
Gas: Huntsville Utilities  
Water: Madison County W...



Community Address

106 Fall Meadow Dr

New Homes

05

Floor Plans

08

Homes from the

\$260s

Copyright 2024 Davidson Homes LLC | All Rights Reserved | Davidson Homes is a leading builder of quality new homes across the Southeast. Davidson Homes reserves the right to adjust items listed without prior notice or obligation. Such items may include, but are not limited to, options, included features and community information, pricing, amenities, square footage, terms or availability. Features, options, floor plans, elevations, colors, dimensions and photographs are for illustration purposes and may vary from homes built. Please see your community specialist for details. Equal housing lender. Last Updated 04/23/2024.





## Durham Farms in Harvest, AL

# Quick Move-In Homes

Winston Barton  
Call (256) 612-5132



SPRING SPLURGE

Save **30%** on  
Design Upgrades!

PLUS, ENJOY  
**\$5,000\***  
TO USE AS YOU CHOOSE!

LEARN MORE →

\*See link for terms/conditions.

UPDATED  
**04/23/2024**

HOMES  
**05**

COMMUNITY ADDRESS  
**106 Fall Meadow Dr**



**\$314,900**  
**4 Beds 2 Baths 1,964 Sq Ft**  
186 Fall Meadow Drive | #74  
The Daphne D Plan



**\$339,900**  
**4 Beds 3 Baths 2,136 Sq Ft**  
185 Fall Meadow Drive | #55  
The Everett B Plan



**\$284,900**  
**3 Beds 2 Baths 1,484 Sq Ft**  
184 Fall Meadow Drive | #75  
The Asheville C Plan



**\$315,160**  
**4 Beds 3 Baths 1,964 Sq Ft**  
183 Fall Meadow Drive | #56  
The Daphne D Plan



**\$298,693**  
**3 Beds 2 Baths 1,620 Sq Ft**  
181 Fall Meadow Drive | #57  
The Franklin C Plan



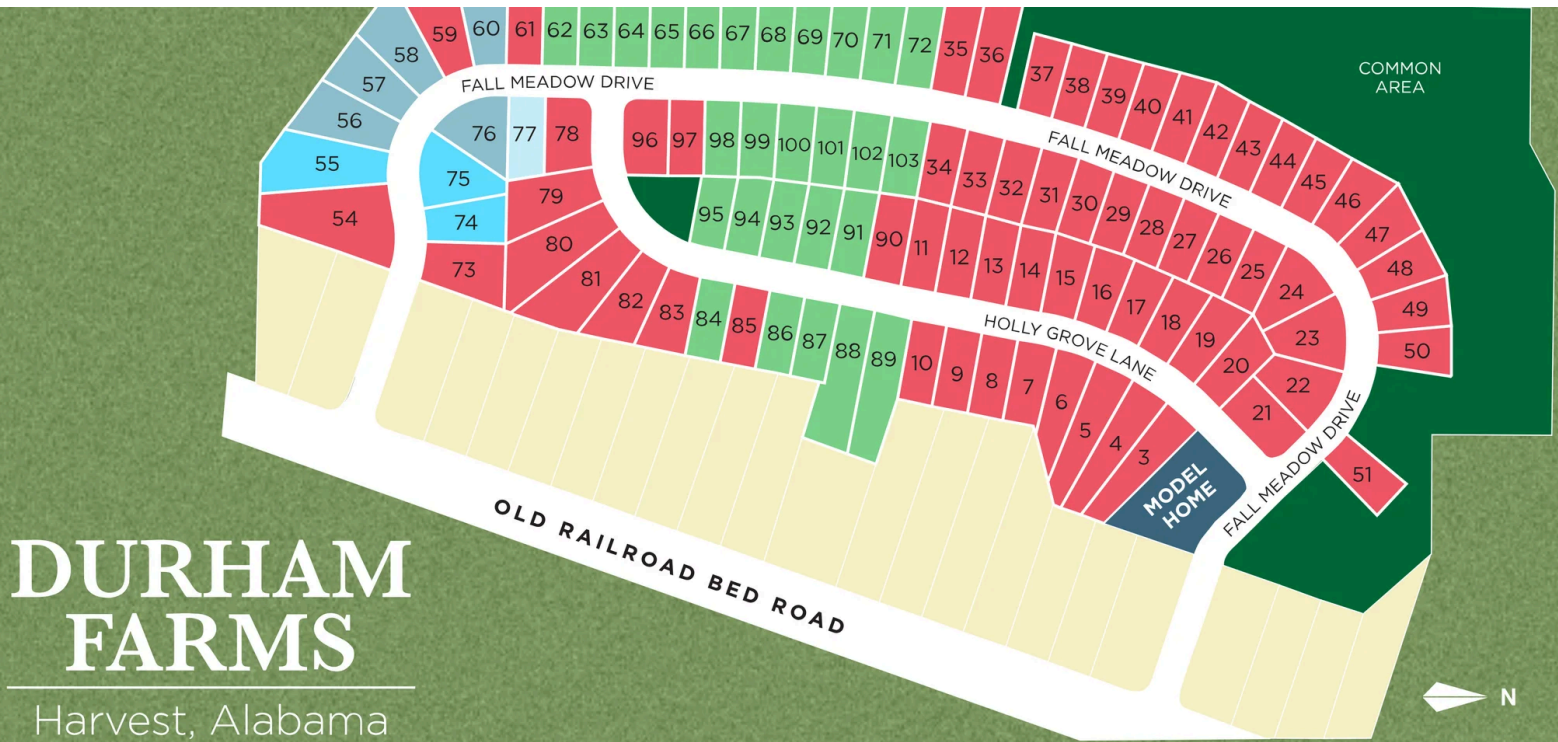




Durham Farms in Harvest, AL

## Community Homesite Map

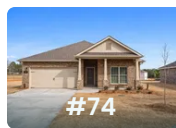
Winston Barton  
Call (256) 612-5132



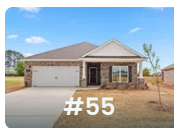
**DURHAM FARMS**  
Harvest, Alabama

MOVE-IN READY QUICK MOVE-IN COMING SOON AVAILABLE SOLD

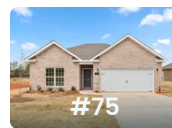
### Featured Homes for Sale



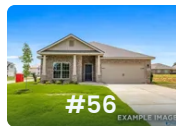
**The Daphne D**  
186 Fall Meadow Drive  
**\$314,900**



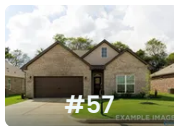
**The Everett B**  
185 Fall Meadow Drive  
**\$339,900**



**The Asheville C**  
184 Fall Meadow Drive  
**\$284,900**



**The Daphne D**  
183 Fall Meadow Drive  
**\$315,160**



**The Franklin C**  
181 Fall Meadow Drive  
**\$298,693**



# The Asheville

## Exterior Options

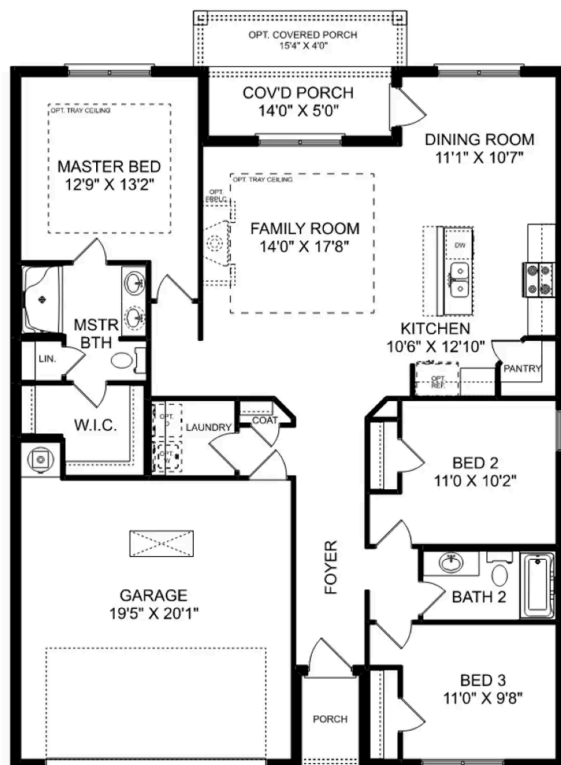


**BEDS**  
**3**

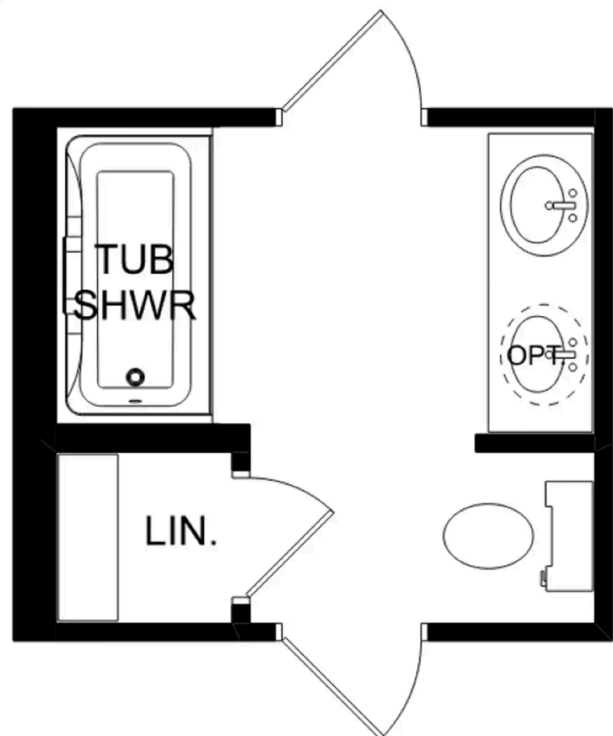
**BATHS**  
**2**

**SQ FT**  
**1,484**

**PARKING**  
**2**



**THE ASHEVILLE**



**THE ASHEVILLE OPTIONS**



# The Franklin

## Exterior Options

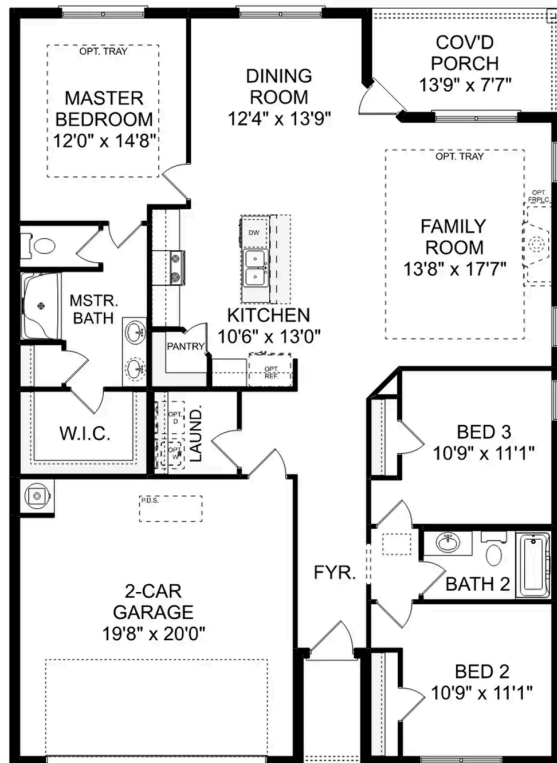


**BEDS**  
**3**

**BATHS**  
**2**

**SQ FT**  
**1,620**

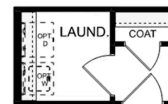
**PARKING**  
**2**



**THE FRANKLIN**



OPT. DROP ZONE



OPT. COAT CLOSET



OPT. DELUXE MASTER BATH

**THE FRANKLIN OPTIONS**

# The Daphne

## Exterior Options

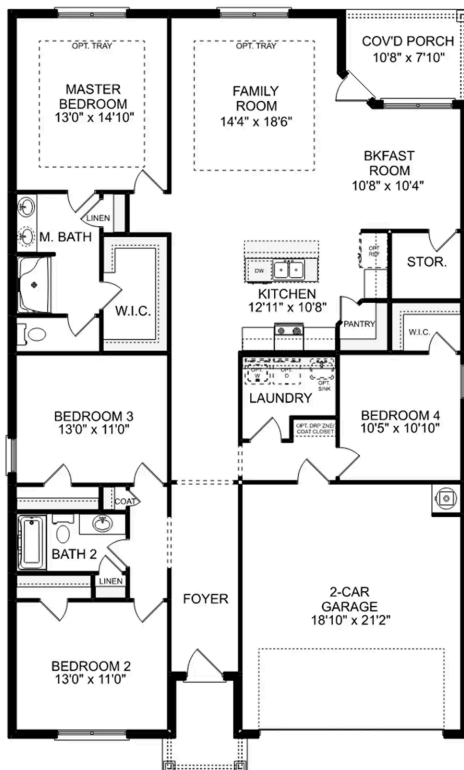


**BEDS**  
**4**

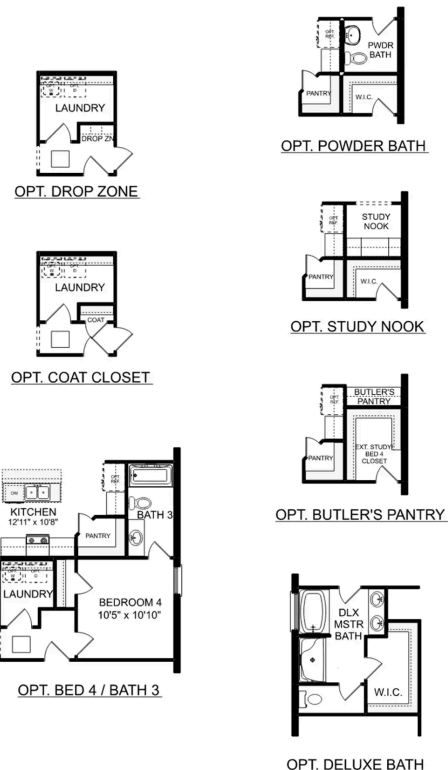
**BATHS**  
**2**

**SQ FT**  
**1,964**

**PARKING**  
**2**



**THE DAPHNE**



**THE DAPHNE OPTIONS**





Durham Farms in Harvest, AL

Call (256) 612-5132  
DAVIDSONHOMESLLC.COM

## The Everett

### Exterior Options

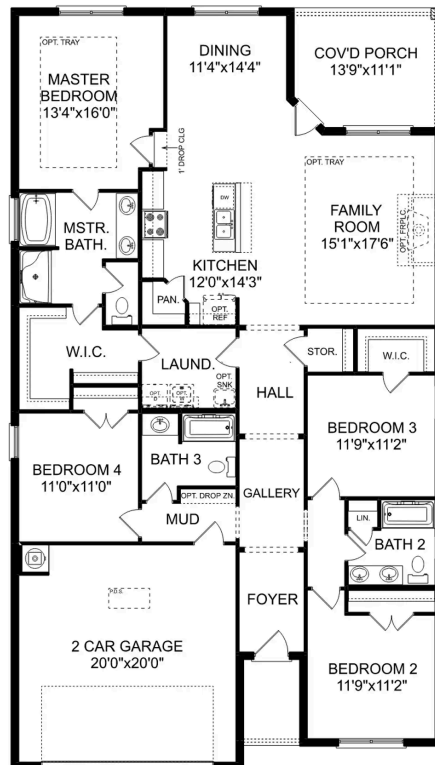


BEDS  
**4**

BATHS  
**3**

SQ FT  
**2,136**

PARKING  
**2**



THE EVERETT



# The Shelby A

## Exterior Options

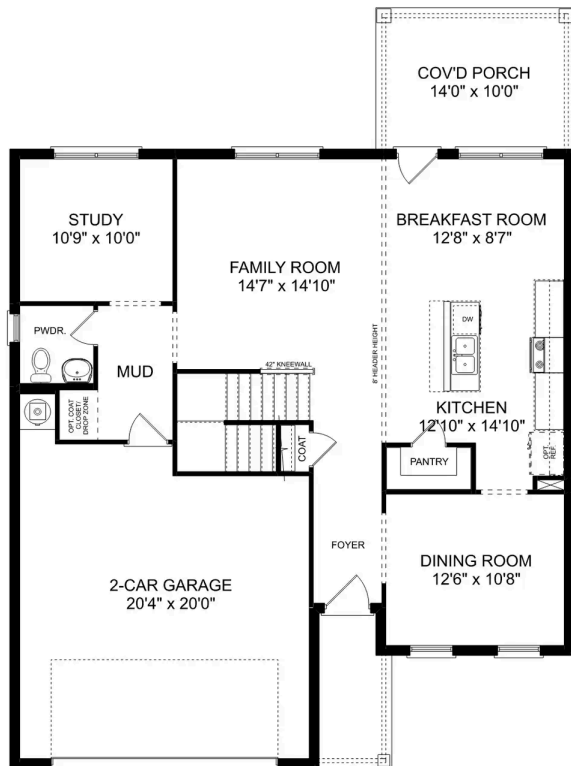


**BEDS**  
**3**

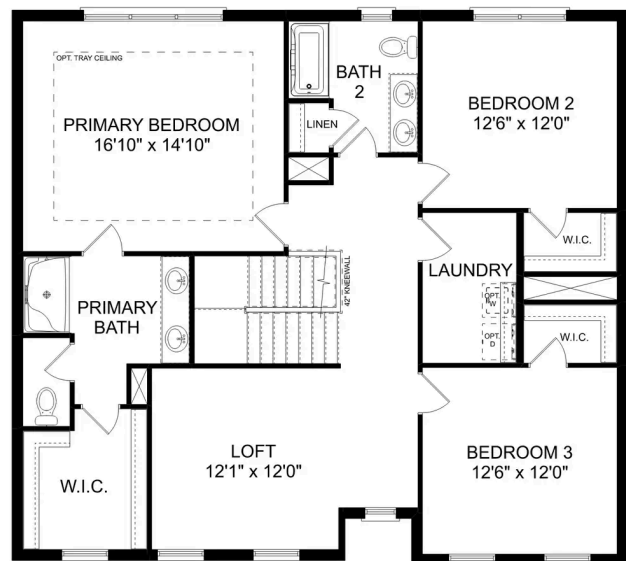
**BATHS**  
**2.5**

**SQ FT**  
**2,452**

**PARKING**  
**2**



**MAIN FLOOR**



**UPPER FLOOR**



## The Shelby A

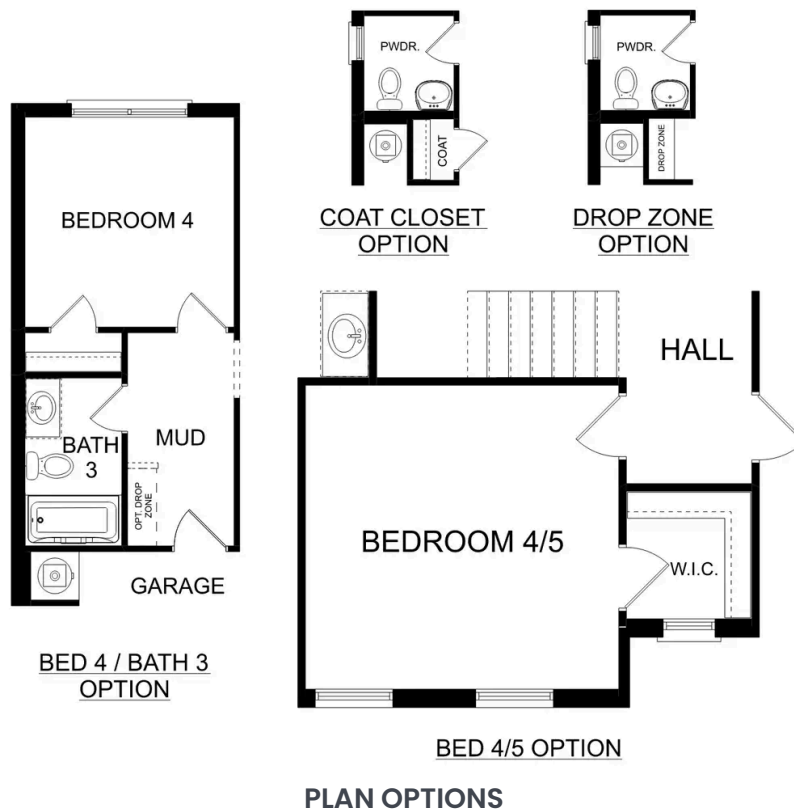
The Shelby welcomes you into a modern, open space, complete with a formal dining room and study. The kitchen overlooks an open-concept family room. The second floor features a spacious master bedroom with a large walk-in closet and master bath along with two additional bedrooms with ample walk-in closets of their own.

BEDS  
**3**

BATHS  
**2.5**

SQ FT  
**2,452**

GARAGE  
**2**



# The Charleston D



## Description

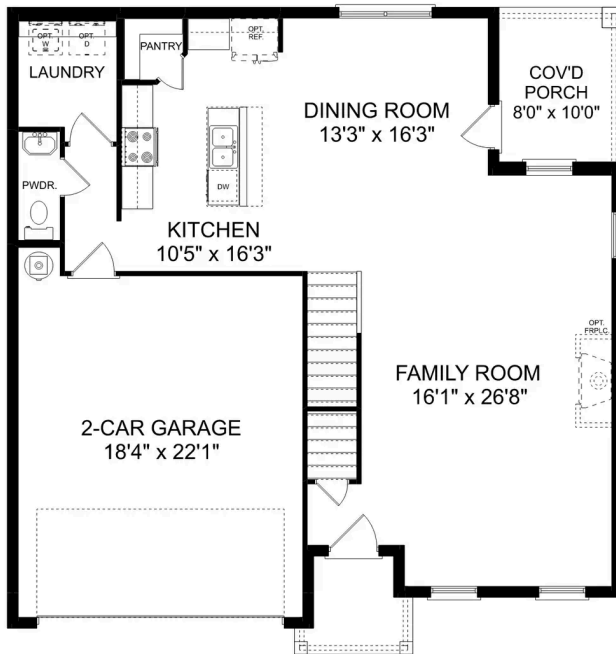
The sky's the limit with The Charleston's two-story layout and massive bonus room. Inside the home's brick exterior, the open-concept kitchen overlooks the huge family room. The Master Suite offers you a personal retreat – complete with large walk-in closet.

**BEDS**  
**4**

**BATHS**  
**2.5**

**SQ FT**  
**2,505**

**PARKING**  
**2**





## The Charleston D

The sky's the limit with The Charleston's two-story layout and massive bonus room. Inside the home's brick exterior, the open-concept kitchen overlooks the huge family room. The Master Suite offers you a personal retreat – complete with large walk-in closet. Whether you're looking for a game room or a fifth bedroom, the upstairs bonus room gives you all the flexibility you need. Make it your own with The Charleston's flexible floor plan! Just know that offerings vary by location, so please discuss our standard features and upgrade options with your community's agent.

BEDS  
**4**

BATHS  
**2.5**

SQ FT  
**2,505**

GARAGE  
**2**



THE CHARLESTON D OPTIONS





## The Chelsea A

The Chelsea's windows fill the open floor plan with natural light, welcoming you into this charming home. The kitchen showcases ample counterspace, overlooking the breakfast and family room. A large study on the first floor offers potential, and the home's second floor features four bedrooms, each with plenty of closet space. The master bedroom is separate from the other bedrooms for added privacy, and the fourth bedroom features its own private bath.

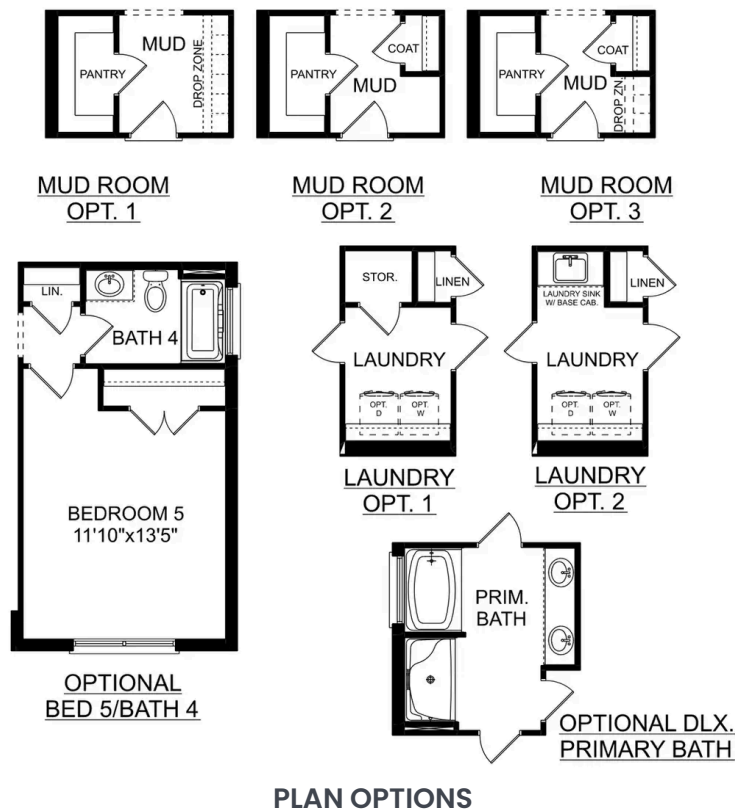
Make it your own with The Chelsea's flexible floor plan. Offerings vary by location, so please discuss your options with your community's agent.

BEDS  
**4**

BATHS  
**3.5**

SQ FT  
**2,769**

GARAGE  
**2**



# The Richmond D



## Description

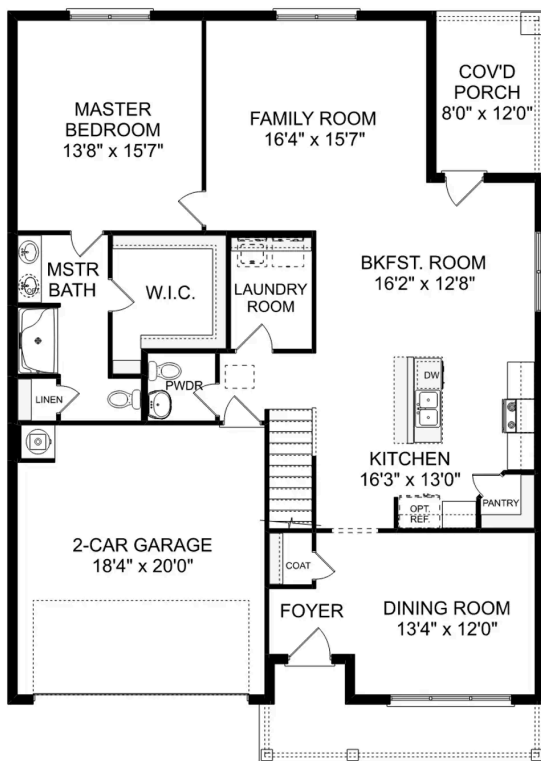
Starring five bedrooms and plenty of space, The Richmond features a sprawling layout! Enter the foyer and discover the elegant dining room to the left. The home quickly expands into an open-concept living space, as the charming kitchen overlooks the breakfast nook and family room.

**BEDS**  
**5**

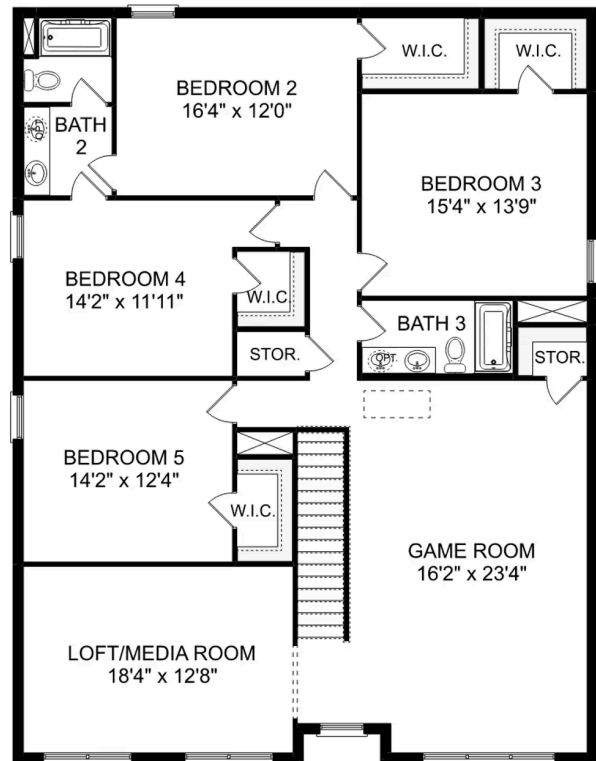
**BATHS**  
**3.5**

**SQ FT**  
**3,537**

**PARKING**  
**2**



**THE RICHMOND D MAIN FLOOR**



**THE RICHMOND D UPPER FLOOR**

## The Richmond D

Starring five bedrooms and plenty of space, The Richmond features a sprawling layout! Enter the foyer and discover the elegant dining room to the left. The home quickly expands into an open-concept living space, as the charming kitchen overlooks the breakfast nook and family room. Continue through to the Master Suite, featuring a huge walk-in closet.

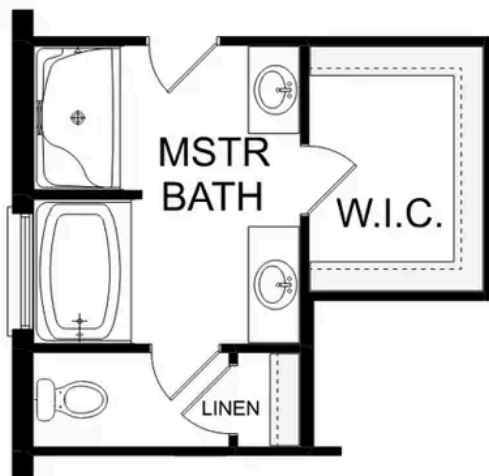
Upstairs, the plan features four more bedrooms, in addition to a game room and media room. Whether you're looking for a home theater or a home gym, The Richmond offers all the space you need.

BEDS  
**5**

BATHS  
**3.5**

SQ FT  
**3,537**

GARAGE  
**2**



OPTIONAL DELUXE  
MASTER BATH



OPTIONAL  
MEDIA ROOM

### THE RICHMOND D OPTIONS