

Heritage Lakes

Davidson Homes in New Market, AL

Welcome to Heritage Lakes, a charming community of single-family homes located in the heart of New Market. With a range of floor plans to choose from, you'll find a perfect home to suit your needs.

Enjoy quick access to downtown Huntsville, located just 20 minutes away via Highway 231. Spend more time outdoors in the nearby Sharon Johnston Park, Colonial Golf Course, or Flint River, ideal for fishing, swimming, and kayaking. Our community is close to multiple schools too, including Lynn Fanning Elementary, Moores Mill Intermediate, Meridianville Middle, and Hazel Green High School- a College Success...

Features

Open-Concept Floor Plans

Local Schools

Madison County School Di...
Lynn Fanning Elementary
Moores Mill Intermediate
Meridianville Middle
Hazel Green High

Utilities

Electric: Huntsville Utilities
Gas: Huntsville Utilities
Water: Madison County W...



Community Address

108 Heritage Lakes Blvd

New Homes

04

Floor Plans

07

Homes from the

\$260s

Copyright 2024 Davidson Homes LLC | All Rights Reserved | Davidson Homes is a leading builder of quality new homes across the Southeast. Davidson Homes reserves the right to adjust items listed without prior notice or obligation. Such items may include, but are not limited to, options, included features and community information, pricing, amenities, square footage, terms or availability. Features, options, floor plans, elevations, colors, dimensions and photographs are for illustration purposes and may vary from homes built. Please see your community specialist for details. Equal housing lender. Last Updated 04/18/2024.





Heritage Lakes in New Market, AL

Quick Move-In Homes

Sabrina Dennis
Call (256) 203-5695



SPRING SPLURGE

Save **30%** on
Design Upgrades!

PLUS, ENJOY
\$5,000*
TO USE AS YOU CHOOSE!

LEARN MORE →

*See link for terms/conditions.

UPDATED
04/18/2024

HOMES
04

COMMUNITY ADDRESS
108 Heritage Lakes Blvd



\$278,831

3 Beds 1 Baths 1,484 Sq Ft

107 Saylor Rose Drive | #31

The Asheville C Plan



\$289,578

3 Beds 1 Baths 1,620 Sq Ft

103 Saylor Rose Drive | #33

The Franklin C Plan



\$308,414

4 Beds 2 Baths 1,964 Sq Ft

112 Saylor Rose Drive | #41

The Daphne C Plan



\$278,105

3 Beds 1 Baths 1,484 Sq Ft

136 Heritage Lakes Boulevard | #60

The Asheville C Plan

Copyright 2024 Davidson Homes LLC | All Rights Reserved | Davidson Homes is a leading builder of quality new homes across the Southeast. Davidson Homes reserves the right to adjust items listed without prior notice or obligation. Such items may include, but are not limited to, options, included features and community information, pricing, amenities, square footage, terms or availability. Features, options, floor plans, elevations, colors, dimensions and photographs are for illustration purposes and may vary from homes built. Please see your community specialist for details. Equal housing lender.

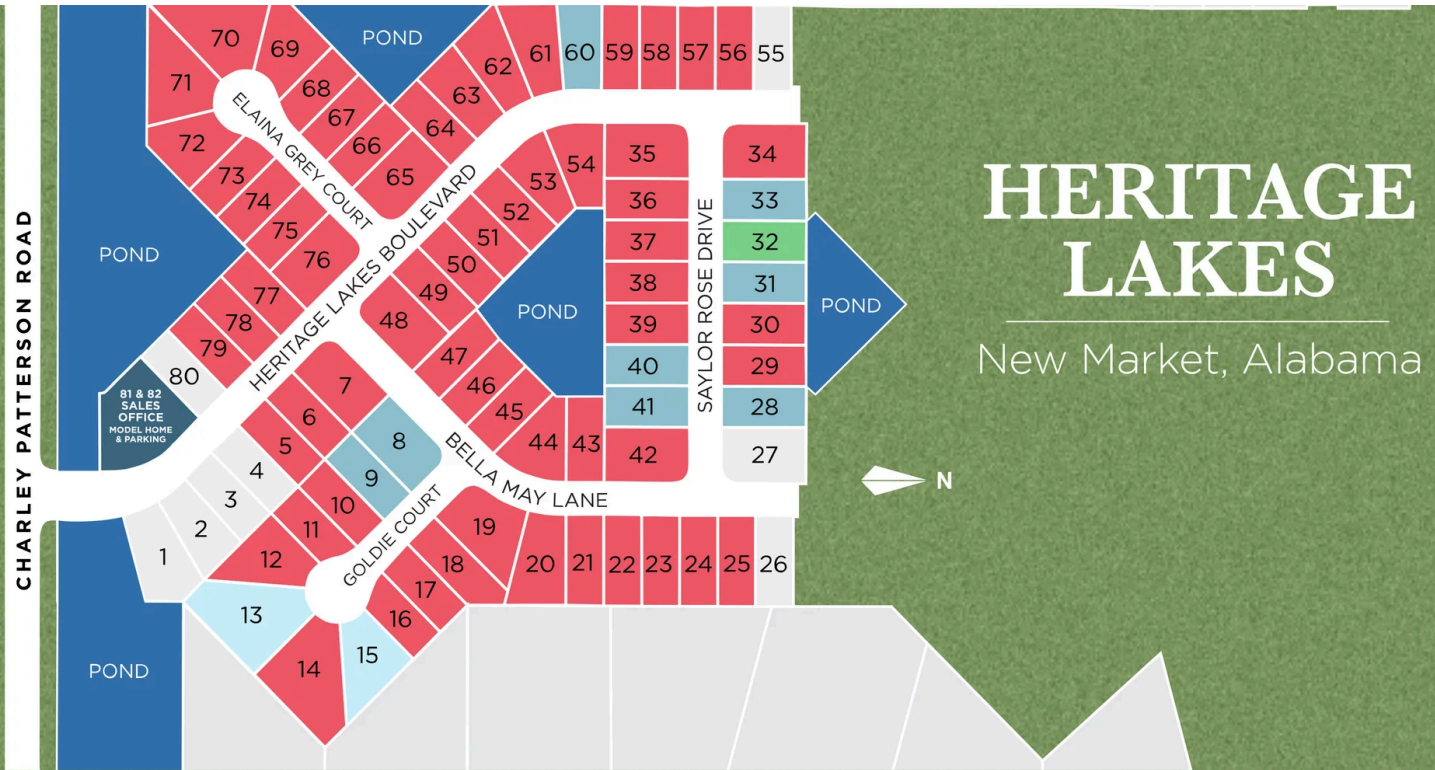




Heritage Lakes in New Market, AL

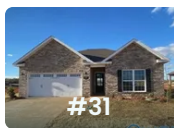
Community Homesite Map

Sabrina Dennis
Call (256) 203-5695

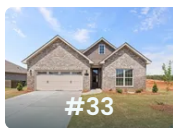


MOVE-IN READY QUICK MOVE-IN COMING SOON AVAILABLE SOLD

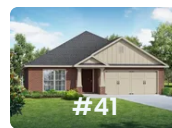
Featured Homes for Sale



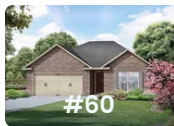
The Asheville C
107 Saylor Rose Drive
\$278,831



The Franklin C
103 Saylor Rose Drive
\$289,578



The Daphne C
112 Saylor Rose Drive
\$308,414



The Asheville C
136 Heritage Lakes Boulevard
\$278,105



The Asheville

Exterior Options

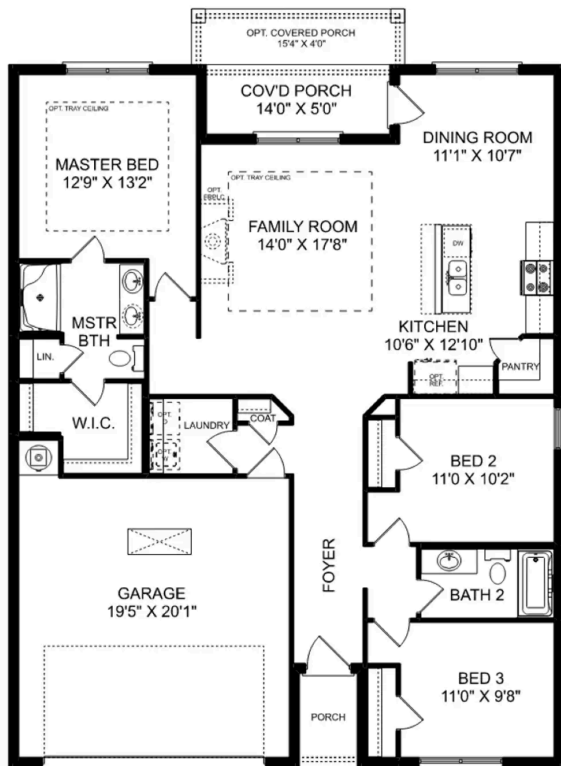


BEDS
3

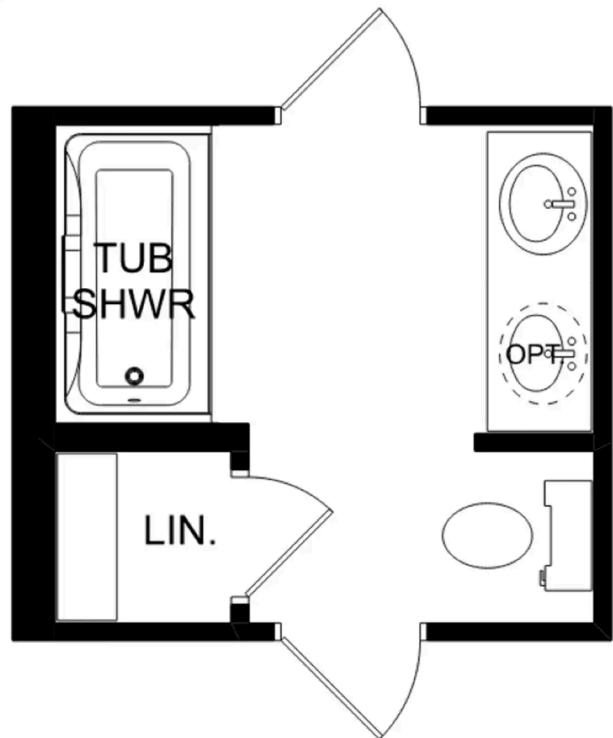
BATHS
2

SQ FT
1,484

PARKING
2



THE ASHEVILLE



THE ASHEVILLE OPTIONS

The Franklin



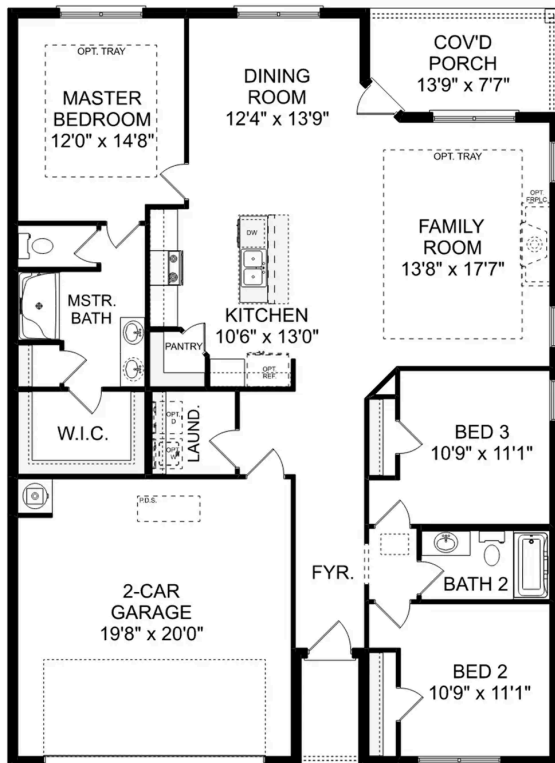
BEDS
3

BATHS
2

SQ FT
1,620

PARKING
2

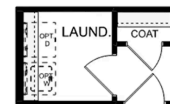
Exterior Options



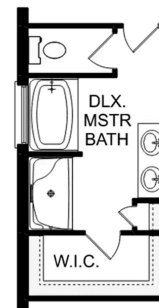
THE FRANKLIN



OPT. DROP ZONE



OPT. COAT CLOSET



OPT. DELUXE MASTER BATH

THE FRANKLIN OPTIONS

The Daphne

Exterior Options

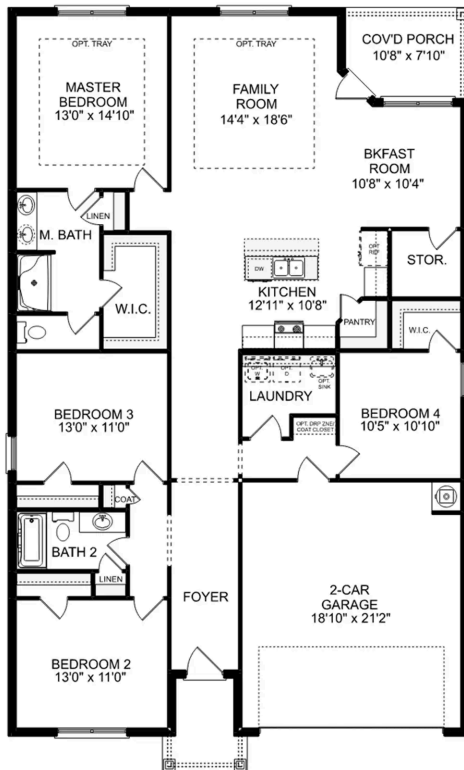


BEDS
4

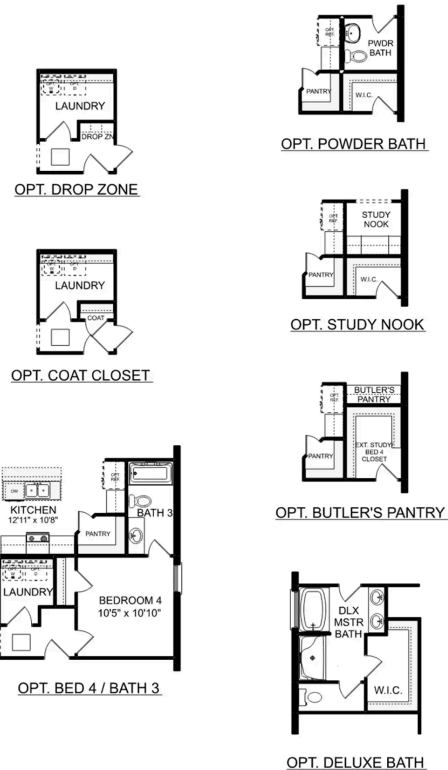
BATHS
2

SQ FT
1,964

PARKING
2



THE DAPHNE



THE DAPHNE OPTIONS



Heritage Lakes in New Market, AL

Call (256) 203-5695
DAVIDSONHOMESLLC.COM

The Shelby A



BEDS

BATHS

SQ FT
2,452

PARKING



MAIN FLOOR



UPPER FLOOR



The Shelby A

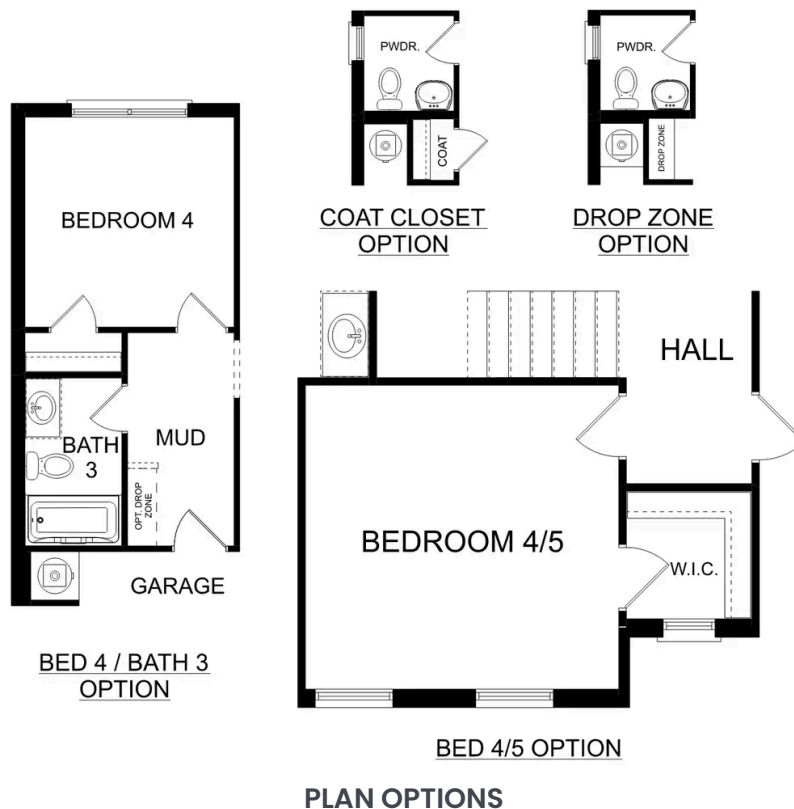
The Shelby welcomes you into a modern, open space, complete with a formal dining room and study. The kitchen overlooks an open-concept family room. The second floor features a spacious master bedroom with a large walk-in closet and master bath along with two additional bedrooms with ample walk-in closets of their own.

BEDS
3

BATHS
2.5

SQ FT
2,452

GARAGE
2



The Charleston D



Description

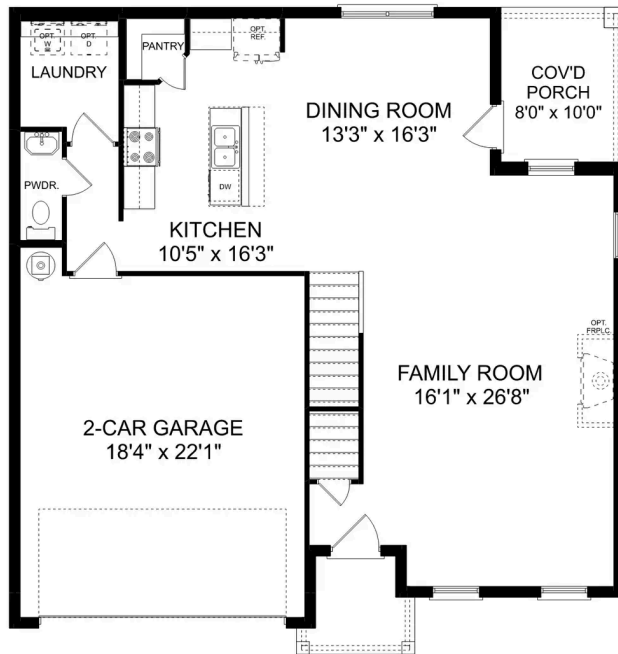
The sky's the limit with The Charleston's two-story layout and massive bonus room. Inside the home's brick exterior, the open-concept kitchen overlooks the huge family room. The Master Suite offers you a personal retreat – complete with large walk-in closet.

BEDS
4

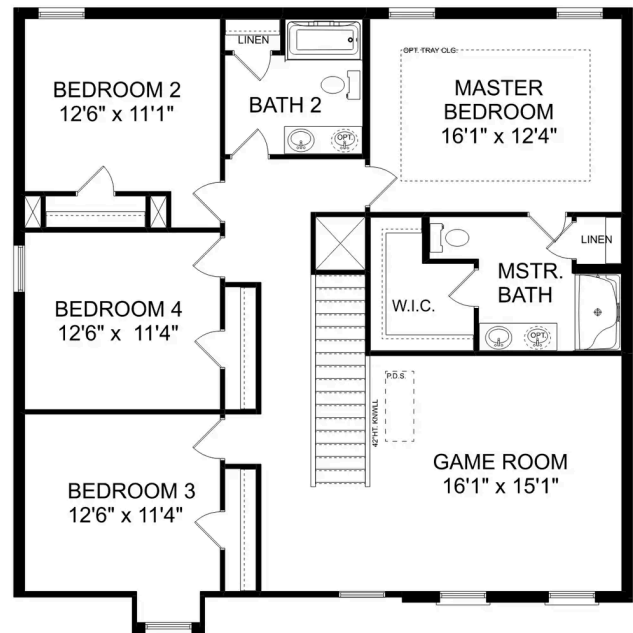
BATHS
2.5

SQ FT
2,505

PARKING
2



THE CHARLESTON D MAIN FLOOR



THE CHARLESTON D UPPER FLOOR

The Charleston D

The sky's the limit with The Charleston's two-story layout and massive bonus room. Inside the home's brick exterior, the open-concept kitchen overlooks the huge family room. The Master Suite offers you a personal retreat – complete with large walk-in closet. Whether you're looking for a game room or a fifth bedroom, the upstairs bonus room gives you all the flexibility you need. Make it your own with The Charleston's flexible floor plan! Just know that offerings vary by location, so please discuss our standard features and upgrade options with your community's agent.

BEDS
4

BATHS
2.5

SQ FT
2,505

GARAGE
2



THE CHARLESTON D OPTIONS

The Chelsea A

Exterior Options

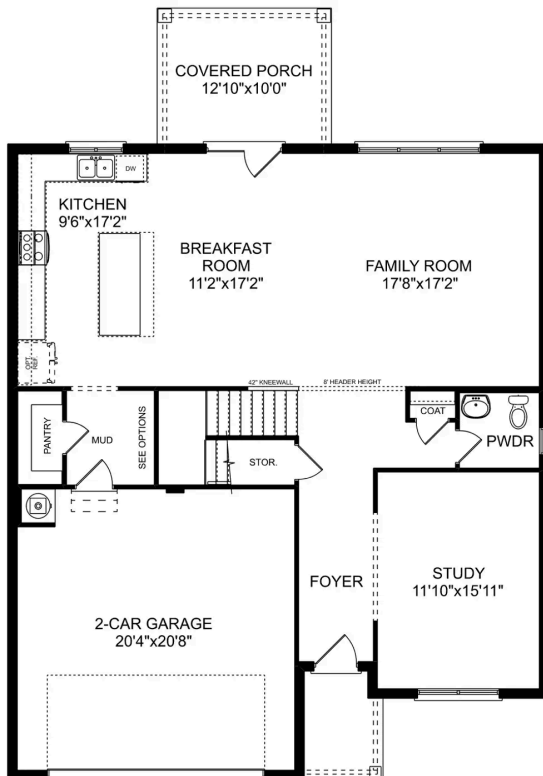


BEDS
4

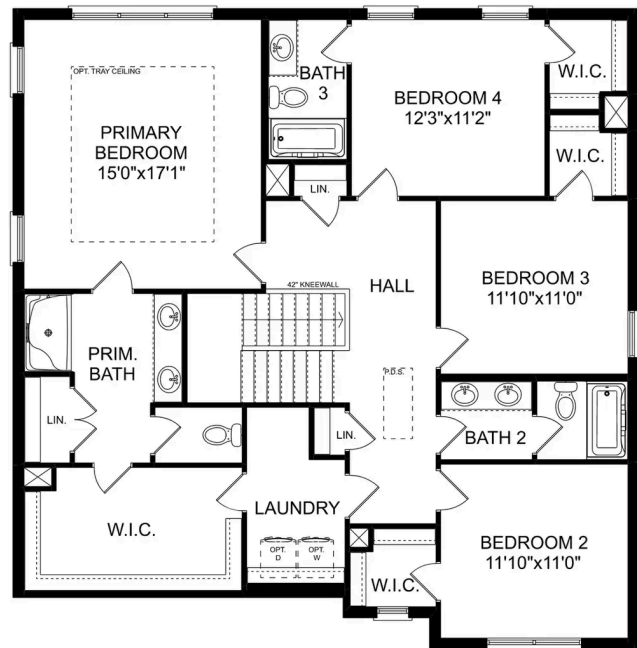
BATHS
3.5

SQ FT
2,769

PARKING
2



MAIN FLOOR



UPPER FLOOR

The Chelsea A

The Chelsea's windows fill the open floor plan with natural light, welcoming you into this charming home. The kitchen showcases ample counterspace, overlooking the breakfast and family room. A large study on the first floor offers potential, and the home's second floor features four bedrooms, each with plenty of closet space. The master bedroom is separate from the other bedrooms for added privacy, and the fourth bedroom features its own private bath.

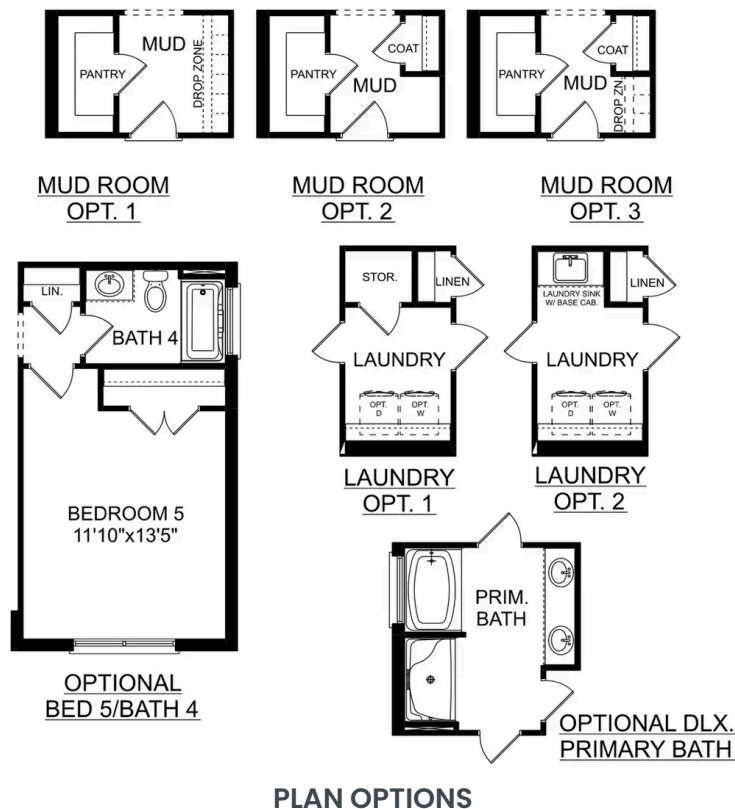
Make it your own with The Chelsea's flexible floor plan. Offerings vary by location, so please discuss your options with your community's agent.

BEDS
4

BATHS
3.5

SQ FT
2,769

GARAGE
2



The Richmond D



Description

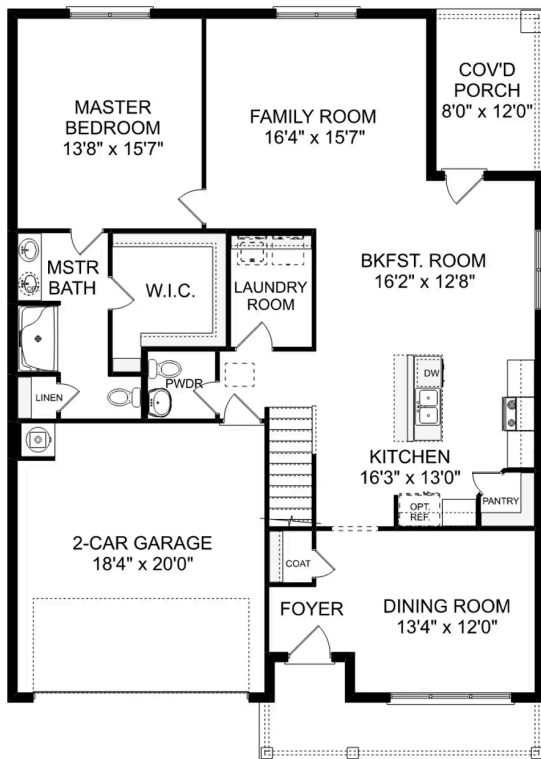
Starring five bedrooms and plenty of space, The Richmond features a sprawling layout! Enter the foyer and discover the elegant dining room to the left. The home quickly expands into an open-concept living space, as the charming kitchen overlooks the breakfast nook and family room.

BEDS
5

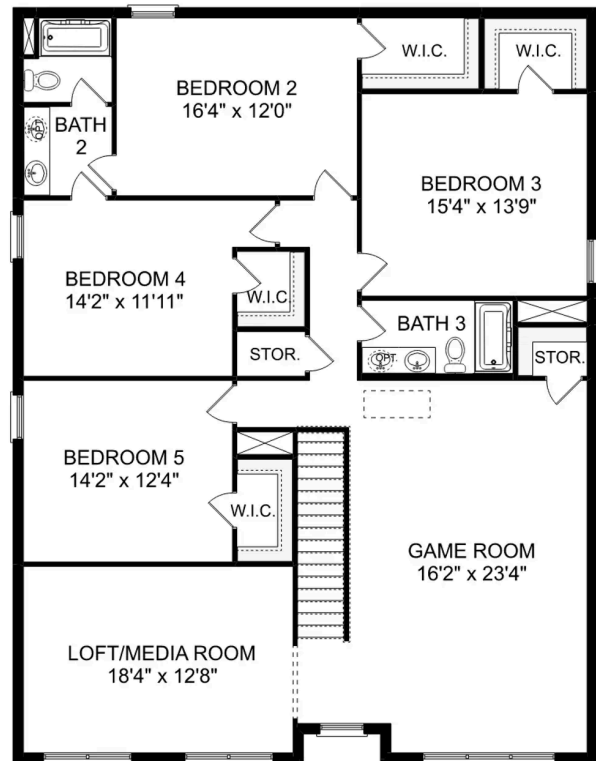
BATHS
3.5

SQ FT
3,537

PARKING
2



THE RICHMOND D MAIN FLOOR



THE RICHMOND D UPPER FLOOR

The Richmond D

Starring five bedrooms and plenty of space, The Richmond features a sprawling layout! Enter the foyer and discover the elegant dining room to the left. The home quickly expands into an open-concept living space, as the charming kitchen overlooks the breakfast nook and family room. Continue through to the Master Suite, featuring a huge walk-in closet.

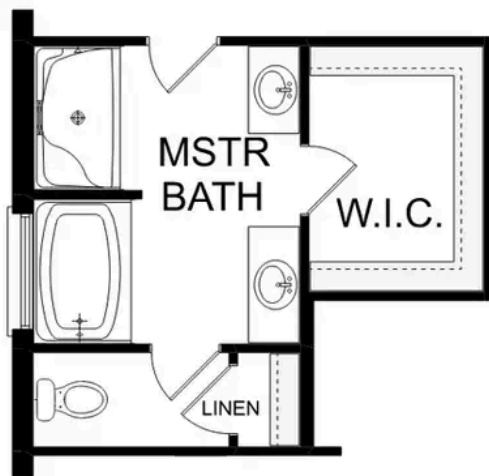
Upstairs, the plan features four more bedrooms, in addition to a game room and media room. Whether you're looking for a home theater or a home gym, The Richmond offers all the space you need.

BEDS
5

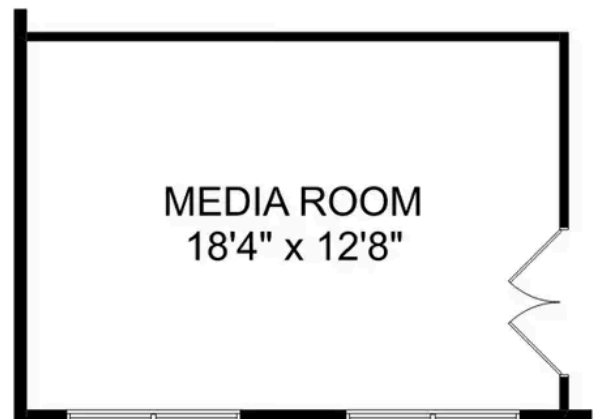
BATHS
3.5

SQ FT
3,537

GARAGE
2



OPTIONAL DELUXE
MASTER BATH



OPTIONAL
MEDIA ROOM

THE RICHMOND D OPTIONS