

Flint Meadows

Davidson Homes in New Market, AL

Welcome to Flint Meadows – the latest phase in our collection of exceptional single-family homes in the serene town of New Market, Alabama. As the leading home builder in the area, we're thrilled to offer you an opportunity to join this welcoming community. Our beautifully crafted homes feature open concept floor plans, tasteful granite countertops, and all the amenities you need to live in comfort and style. With two new floor plans on offer, you're sure to find a home that meets your unique needs and preferences.

Features

Excellent Schools
Granite Countertops
Open Concept Floor Plans

Local Schools

Madison County School Di...
Riverton Elementary
Riverton Intermediate
Buckhorn Middle
Buckhorn High

Utilities

Electric: Huntsville Utilities
Gas: Huntsville Utilities
Water: Madison County W...



Community Address

105 River Pointe Dr

New Homes

07

Floor Plans

09

Homes from the

\$260s

Copyright 2024 Davidson Homes LLC | All Rights Reserved | Davidson Homes is a leading builder of quality new homes across the Southeast. Davidson Homes reserves the right to adjust items listed without prior notice or obligation. Such items may include, but are not limited to, options, included features and community information, pricing, amenities, square footage, terms or availability. Features, options, floor plans, elevations, colors, dimensions and photographs are for illustration purposes and may vary from homes built. Please see your community specialist for details. Equal housing lender. Last Updated 04/26/2024.





Flint Meadows in New Market, AL

Quick Move-In Homes

UPDATED
04/26/2024

HOMES
07

Dee Ellis
Call **(256) 371-6915**



COMMUNITY ADDRESS
105 River Pointe Dr



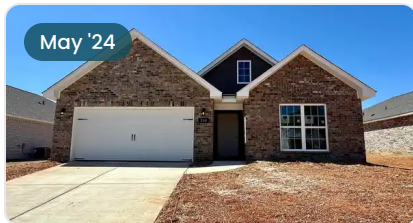
\$314,900
4 Beds 2 Baths 1,964 Sq Ft
203 Sunny Springs Court | #135
The Daphne Plan



\$322,100
4 Beds 2 Baths 1,964 Sq Ft
208 Sunny Springs Court | #123
The Daphne D Plan



\$291,480
3 Beds 2 Baths 1,620 Sq Ft
212 Sunny Springs Court | #125
The Franklin Plan



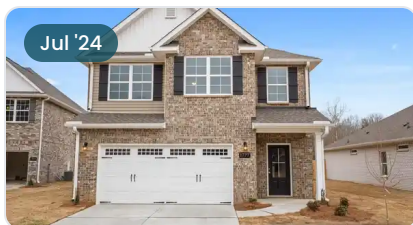
\$294,500
3 Beds 2 Baths 1,620 Sq Ft
210 Sunny Springs Court | #124
The Franklin C Plan



\$273,600
3 Beds 2 Baths 1,484 Sq Ft
211 Sunny Springs Court | #131
The Asheville Plan



\$295,000
3 Beds 2 Baths 1,620 Sq Ft
209 Sunny Springs Court | #132
The Franklin Plan



\$344,800
3 Beds 2.5 Baths 2,200 Sq Ft
213 Sunny Springs Court | #130
The Aiken Plan



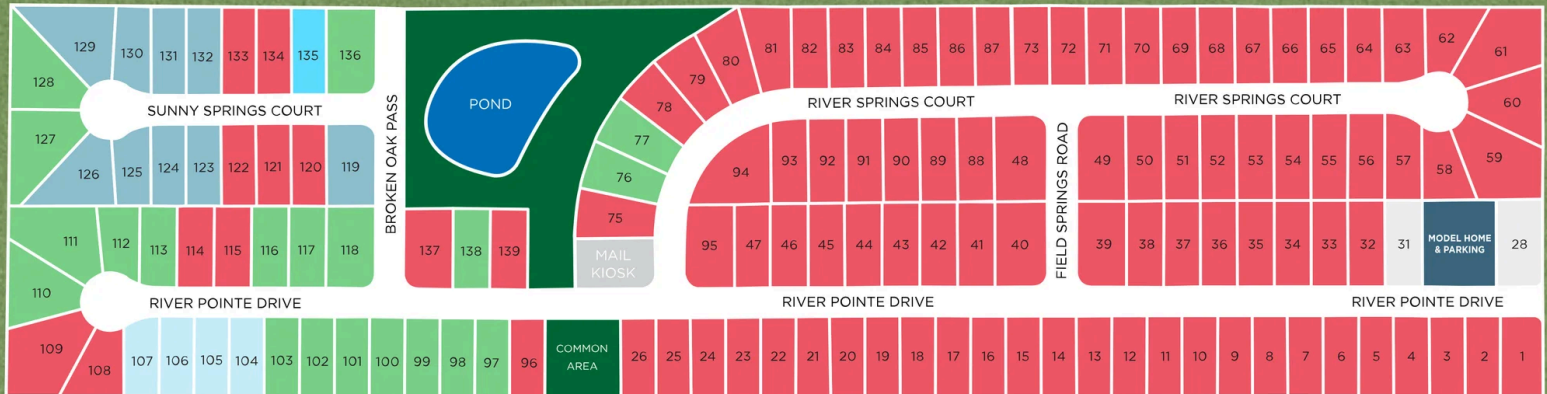


Flint Meadows in New Market, AL

Community Homesite Map

Dee Ellis

Call (256) 371-6915

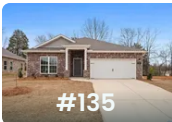

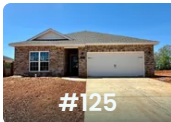
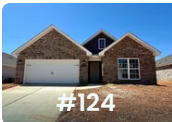
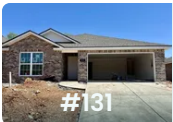
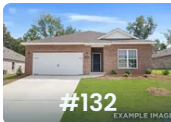



FLINT MEADOWS

New Market, Alabama

MOVE-IN READY QUICK MOVE-IN COMING SOON AVAILABLE SOLD

Featured Homes for Sale

 #135	The Daphne 203 Sunny Springs Court \$314,900	 #123	The Daphne D 208 Sunny Springs Court \$322,100	 #125	The Franklin 212 Sunny Springs Court \$291,480
 #124	The Franklin C 210 Sunny Springs Court \$294,500	 #131	The Asheville 211 Sunny Springs Court \$273,600	 #132	The Franklin 209 Sunny Springs Court \$295,000
 #130	The Aiken 213 Sunny Springs Court \$344,800				

Copyright 2024 Davidson Homes LLC | All Rights Reserved | Davidson Homes is a leading builder of quality new homes across the Southeast. Davidson Homes reserves the right to adjust items listed without prior notice or obligation. Such items may include, but are not limited to, options, included features and community information, pricing, amenities, square footage, terms or availability. Features, options, floor plans, elevations, colors, dimensions and photographs are for illustration purposes and may vary from homes built. Please see your community specialist for details. Equal housing lender.



The Aiken



Description

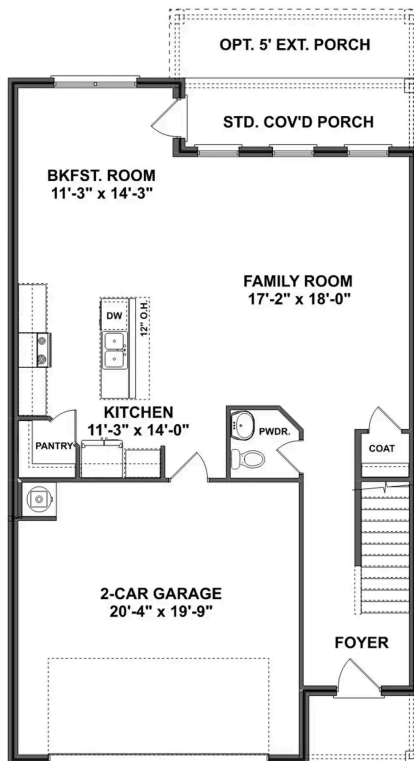
Welcome home to The Aiken floor plan! This charming 2-story home spans across 2,201 square feet and offers a perfect blend of sophistication and functionality. With 3 or 4 bedrooms and 2.5 bathrooms, there's plenty of space for families of all sizes.

BEDS
3

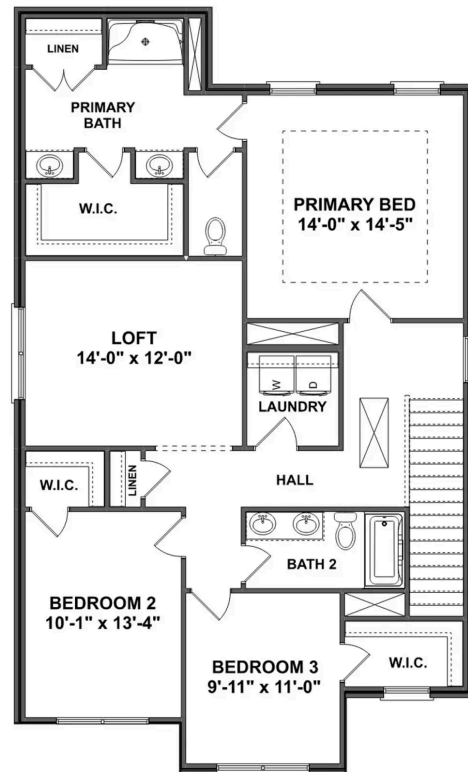
BATHS
2.5

SQ FT
2,201

PARKING
2



THE AIKEN MAIN FLOOR



THE AIKEN UPPER FLOOR

The Aiken

Welcome home to The Aiken floor plan! This charming 2-story home spans across 2,201 square feet and offers a perfect blend of sophistication and functionality. With 3 or 4 bedrooms and 2.5 bathrooms, there's plenty of space for families of all sizes. As you step inside, you're greeted by an inviting open concept floor plan, where the spacious living area seamlessly flows into the dining and kitchen spaces. The stainless-steel appliances and recessed lighting in the kitchen add a touch of modernity, making it a chef's delight. Whether you prefer cozy family dinners or entertaining guests, the covered porch offers a lovely spot for outdoor gatherings, connecting you with the beauty of nature.

BEDS
3

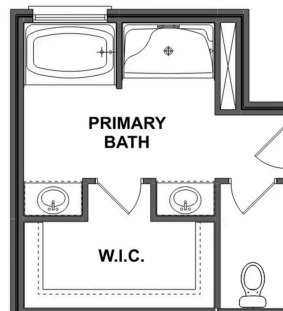
BATHS
2.5

SQ FT
2,201

GARAGE
2



OPT. BEDROOM 4



LUX. PRIMARY BATH

THE AIKEN OPTIONS

The Asheville

Exterior Options

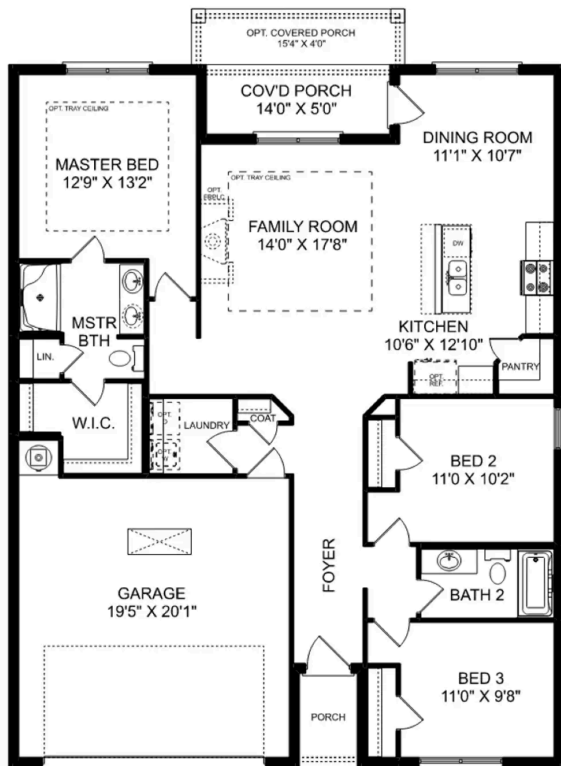


BEDS
3

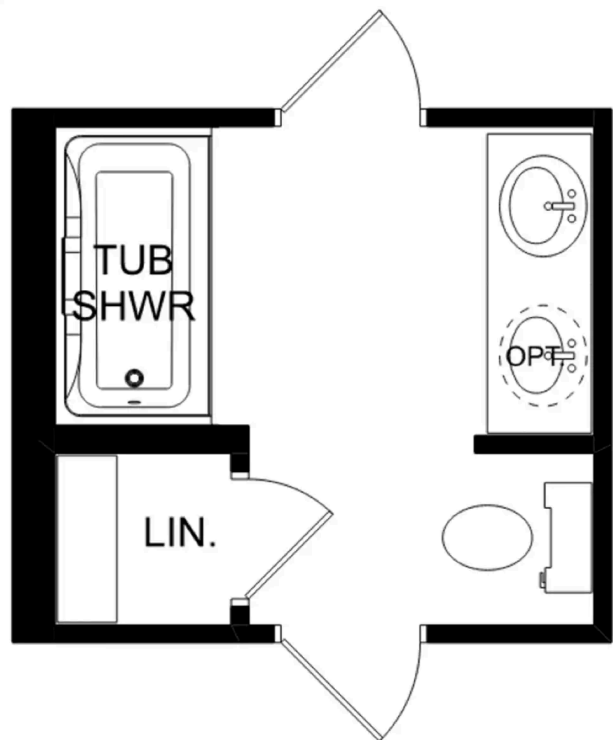
BATHS
2

SQ FT
1,484

PARKING
2



THE ASHEVILLE



THE ASHEVILLE OPTIONS

The Franklin



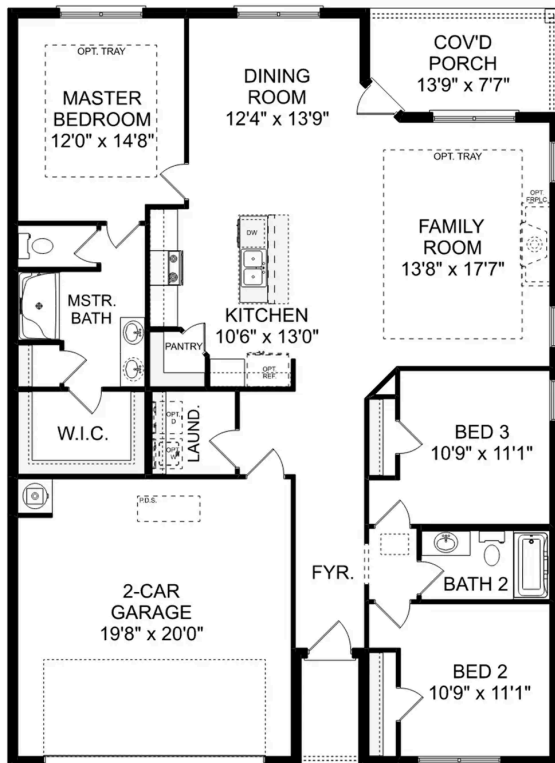
BEDS
3

BATHS
2

SQ FT
1,620

PARKING
2

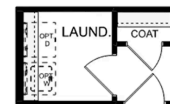
Exterior Options



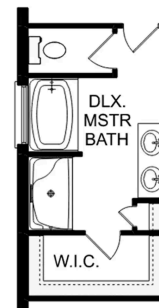
THE FRANKLIN



OPT. DROP ZONE



OPT. COAT CLOSET



OPT. DELUXE MASTER BATH

THE FRANKLIN OPTIONS

The Daphne

Exterior Options

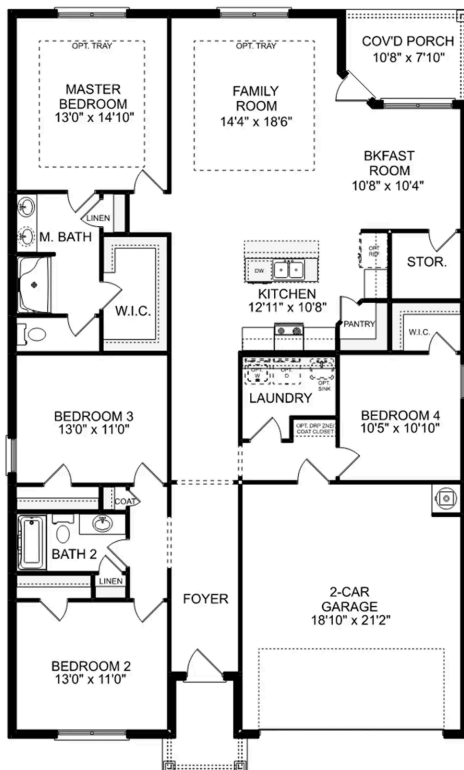


BEDS
4

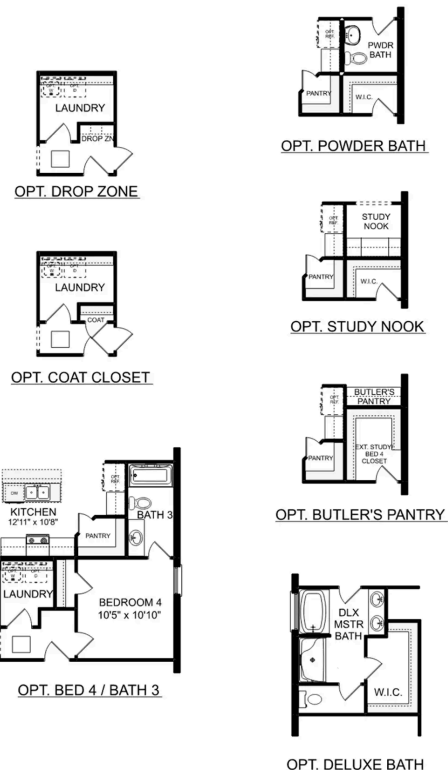
BATHS
2

SQ FT
1,964

PARKING
2



THE DAPHNE



THE DAPHNE OPTIONS



Flint Meadows in New Market, AL

Call (256) 371-6915
DAVIDSONHOMESLLC.COM

The Everett

Exterior Options

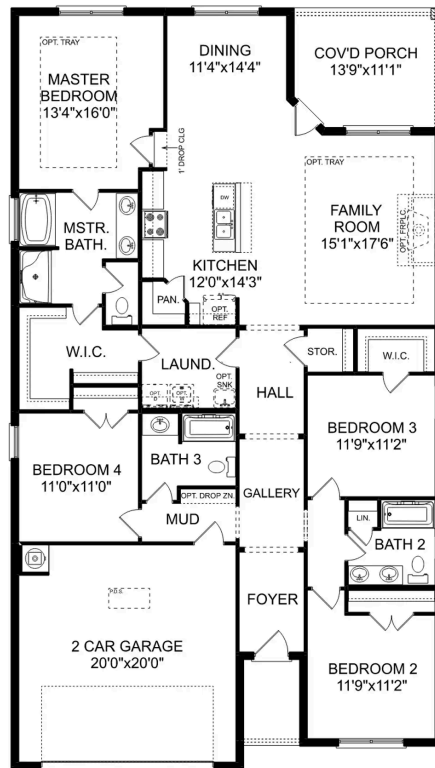


BEDS
4

BATHS
3

SQ FT
2,136

PARKING
2



THE EVERETT



The Shelby A

Exterior Options

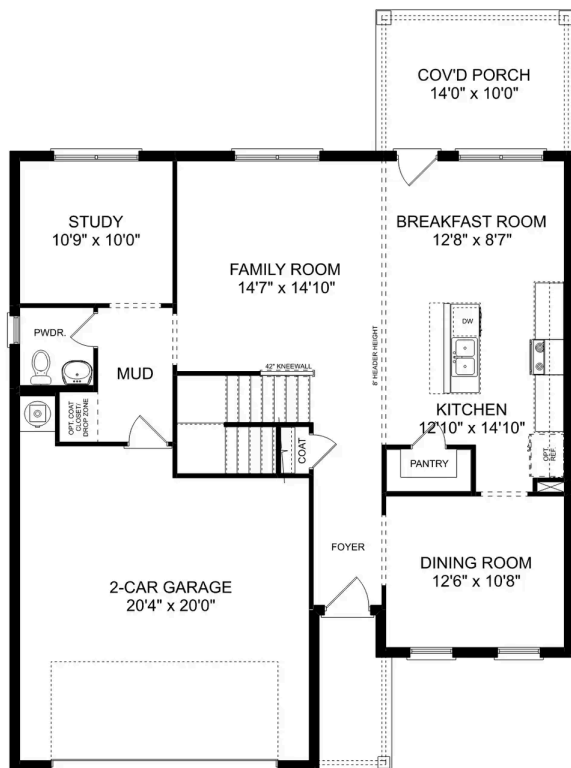


BEDS
3

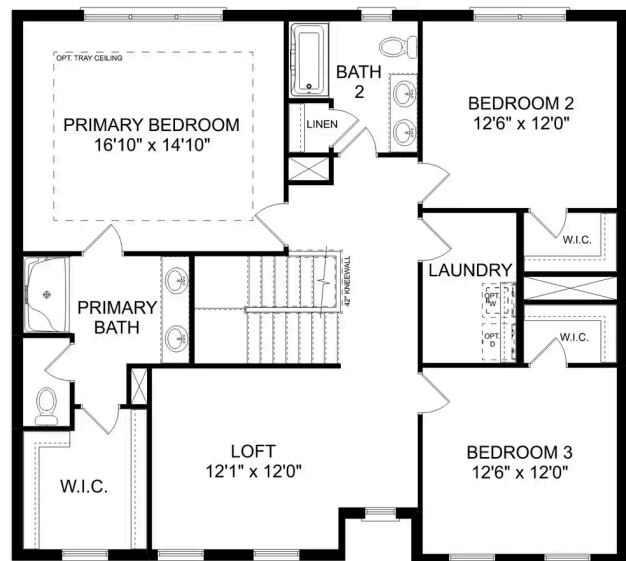
BATHS
2.5

SQ FT
2,452

PARKING
2



MAIN FLOOR



UPPER FLOOR

The Shelby A

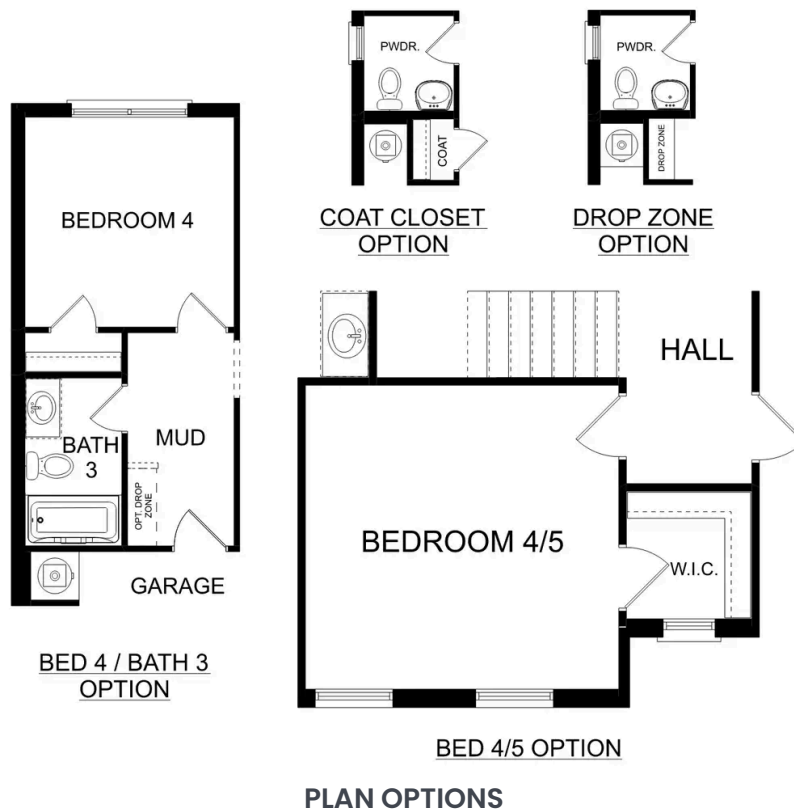
The Shelby welcomes you into a modern, open space, complete with a formal dining room and study. The kitchen overlooks an open-concept family room. The second floor features a spacious master bedroom with a large walk-in closet and master bath along with two additional bedrooms with ample walk-in closets of their own.

BEDS
3

BATHS
2.5

SQ FT
2,452

GARAGE
2



The Chelsea A

The Chelsea's windows fill the open floor plan with natural light, welcoming you into this charming home. The kitchen showcases ample counterspace, overlooking the breakfast and family room. A large study on the first floor offers potential, and the home's second floor features four bedrooms, each with plenty of closet space. The master bedroom is separate from the other bedrooms for added privacy, and the fourth bedroom features its own private bath.

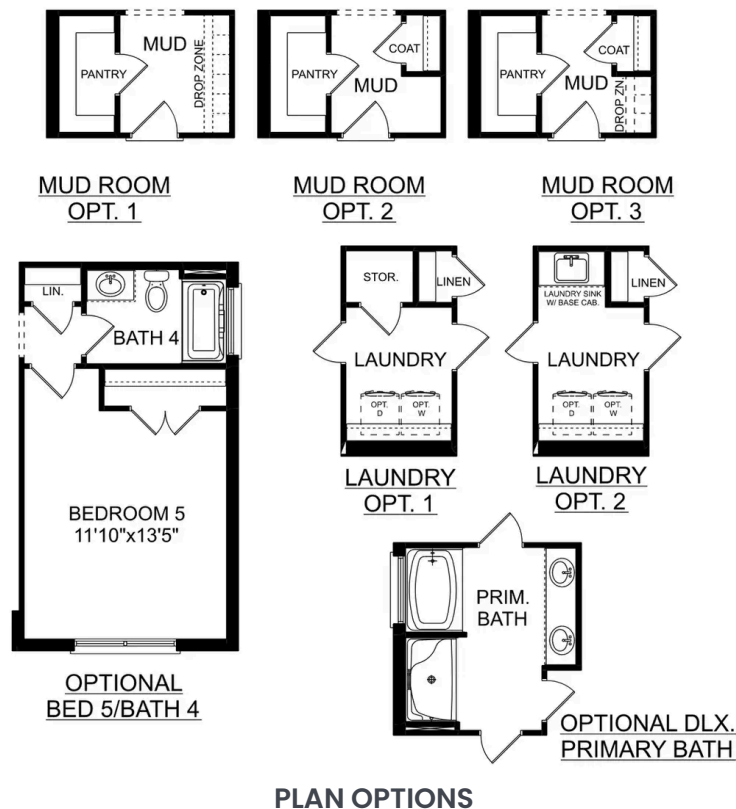
Make it your own with The Chelsea's flexible floor plan. Offerings vary by location, so please discuss your options with your community's agent.

BEDS
4

BATHS
3.5

SQ FT
2,769

GARAGE
2



The Charleston D



Description

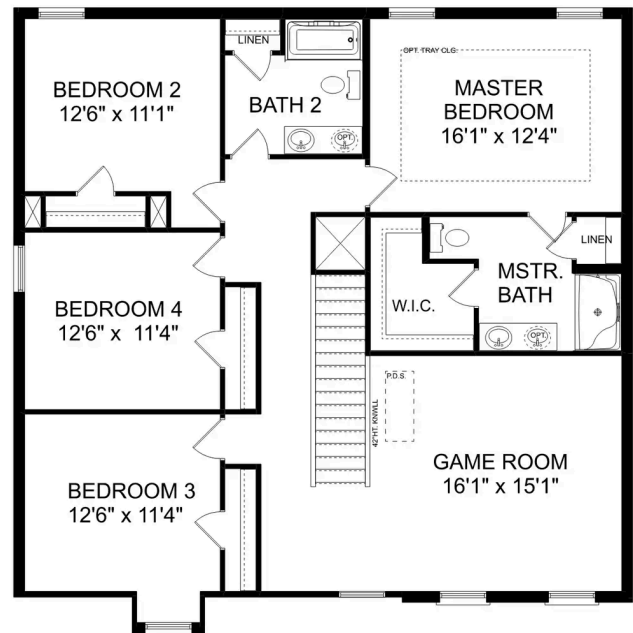
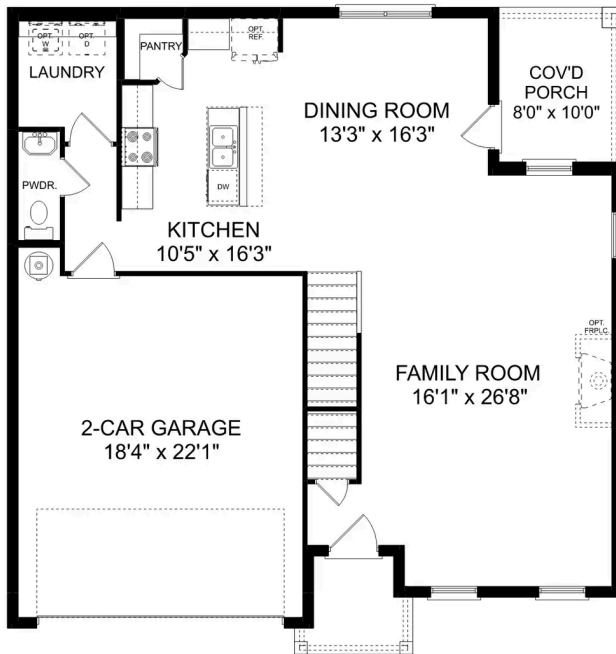
The sky's the limit with The Charleston's two-story layout and massive bonus room. Inside the home's brick exterior, the open-concept kitchen overlooks the huge family room. The Master Suite offers you a personal retreat – complete with large walk-in closet.

BEDS
4

BATHS
2.5

SQ FT
2,505

PARKING
2



The Charleston D

The sky's the limit with The Charleston's two-story layout and massive bonus room. Inside the home's brick exterior, the open-concept kitchen overlooks the huge family room. The Master Suite offers you a personal retreat – complete with large walk-in closet. Whether you're looking for a game room or a fifth bedroom, the upstairs bonus room gives you all the flexibility you need. Make it your own with The Charleston's flexible floor plan! Just know that offerings vary by location, so please discuss our standard features and upgrade options with your community's agent.

BEDS
4

BATHS
2.5

SQ FT
2,505

GARAGE
2



THE CHARLESTON D OPTIONS

The Richmond D



Description

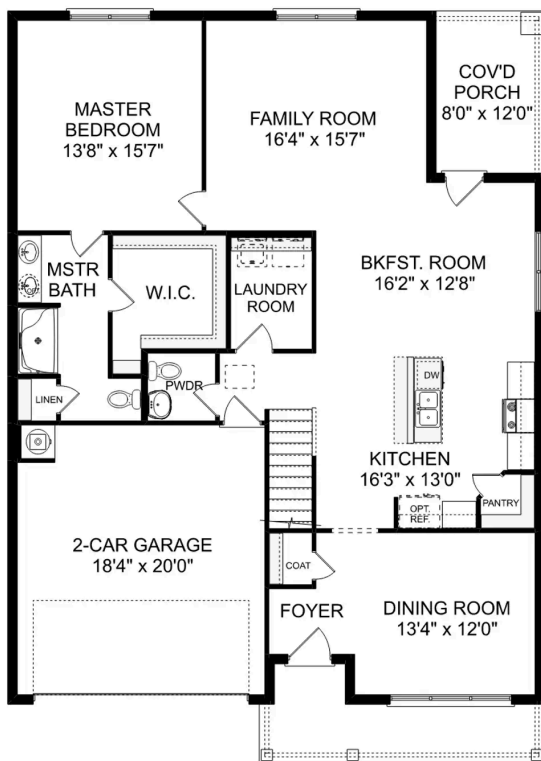
Starring five bedrooms and plenty of space, The Richmond features a sprawling layout! Enter the foyer and discover the elegant dining room to the left. The home quickly expands into an open-concept living space, as the charming kitchen overlooks the breakfast nook and family room.

BEDS
5

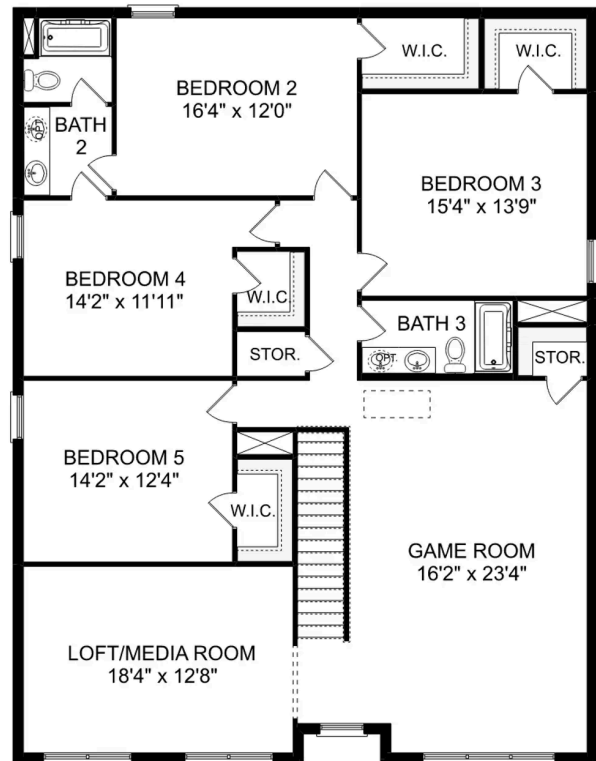
BATHS
3.5

SQ FT
3,537

PARKING
2



THE RICHMOND D MAIN FLOOR



THE RICHMOND D UPPER FLOOR

The Richmond D

Starring five bedrooms and plenty of space, The Richmond features a sprawling layout! Enter the foyer and discover the elegant dining room to the left. The home quickly expands into an open-concept living space, as the charming kitchen overlooks the breakfast nook and family room. Continue through to the Master Suite, featuring a huge walk-in closet.

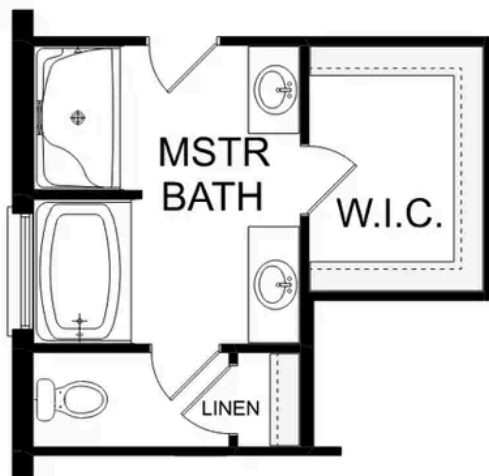
Upstairs, the plan features four more bedrooms, in addition to a game room and media room. Whether you're looking for a home theater or a home gym, The Richmond offers all the space you need.

BEDS
5

BATHS
3.5

SQ FT
3,537

GARAGE
2



OPTIONAL DELUXE
MASTER BATH



OPTIONAL
MEDIA ROOM

THE RICHMOND D OPTIONS