

# The Towns at Red River

## Davidson Homes in Gallatin, TN

Experience life at The Towns at Red River, a captivating new townhome community in the heart of Gallatin. Our welcoming neighborhood promises a lifestyle of convenience, only minutes away from everything you need!

Our newly designed townhomes are designed for modern living and filled with contemporary finishes. Discover the Davidson difference today and find out why The Towns at Red River is the ideal place for you to make your new home!

### Features

5 Minutes to Kroger  
Quartz Countertops  
Covered Patios

### Local Schools

Howard Elementary  
Rucker Stewart Middle  
Gallatin Senior High

### Utilities

Electric: Gallatin Electric  
Water: Gallatin Public Utiliti...



Community Address

Red River Road

New Homes

07

Floor Plans

02

Homes from the

\$250s

Copyright 2024 Davidson Homes LLC | All Rights Reserved | Davidson Homes is a leading builder of quality new homes across the Southeast. Davidson Homes reserves the right to adjust items listed without prior notice or obligation. Such items may include, but are not limited to, options, included features and community information, pricing, amenities, square footage, terms or availability. Features, options, floor plans, elevations, colors, dimensions and photographs are for illustration purposes and may vary from homes built. Please see your community specialist for details. Equal housing lender. Last Updated 04/25/2024.





## The Towns at Red River in Gallatin, TN

# Quick Move-In Homes

Jenn Smith  
Call (615) 437-5589



UPDATED  
04/25/2024

HOMES  
07

COMMUNITY ADDRESS  
Red River Road



**\$271,170**  
2 Beds 3 Baths 1,359 Sq Ft  
1101 Elliott Williams Pvt Way | #1  
The Cumberland A Exterior Plan



**\$263,570**  
3 Beds 3 Baths 1,359 Sq Ft  
1008 Elliott Williams Pvt Way | #55  
The Cumberland B Interior Plan



**\$270,570**  
3 Beds 3 Baths 1,359 Sq Ft  
1113 Elliott Williams Pvt Way | #4  
The Cumberland B Exterior Plan



**\$263,870**  
2 Beds 3 Baths 1,359 Sq Ft  
1109 Elliott Williams Pvt Way | #3  
The Cumberland A Interior Plan



**\$264,170**  
2 Beds 3 Baths 1,359 Sq Ft  
1116 Elliott Williams Pvt Way | #58  
The Cumberland A Interior Plan



**\$263,570**  
3 Beds 3 Baths 1,359 Sq Ft  
1120 Elliott Williams Pvt Way | #59  
The Cumberland B Interior Plan



**\$263,570**  
3 Beds 3 Baths 1,359 Sq Ft  
1129 Elliott Williams Pvt Way | #7  
The Cumberland A Interior Plan







The Towns at Red River in Gallatin, TN

## Community Homesite Map

Jenn Smith

Call (615) 437-5589



## THE TOWNS AT RED RIVER

Gallatin, Tennessee

 MOVE-IN READY

 COMING SOON

 SOLD

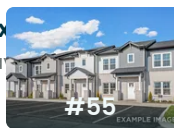
## Featured Homes for Sale



### The Cumberland A Exterior

1101 Elliott Williams Pvt Way

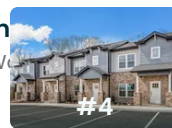
**\$271,170**



### The Cumberland B Interior

1008 Elliott Williams Pvt Way

**\$263,570**



### The Cumberland B Exterior

1113 Elliott Williams Pvt Way

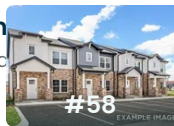
**\$270,570**



### The Cumberland A Interior

1109 Elliott Williams Pvt Way

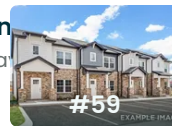
**\$263,870**



### The Cumberland A Interior

1116 Elliott Williams Pvt Way

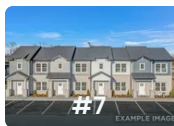
**\$264,170**



### The Cumberland B Interior

1120 Elliott Williams Pvt Way

**\$263,570**



### The Cumberland A Interior

1129 Elliott Williams Pvt Way

**\$263,570**

Copyright 2024 Davidson Homes LLC | All Rights Reserved | Davidson Homes is a leading builder of quality new homes across the Southeast. Davidson Homes reserves the right to adjust items listed without prior notice or obligation. Such items may include, but are not limited to, options, included features and community information, pricing, amenities, square footage, terms or availability. Features, options, floor plans, elevations, colors, dimensions and photographs are for illustration purposes and may vary from homes built. Please see your community specialist for details. Equal housing lender.



## The Cumberland Interior



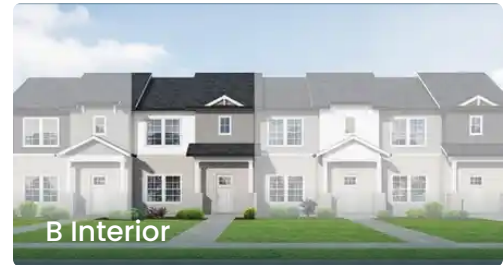
**BEDS**  
**2**

**BATHS**  
**3**

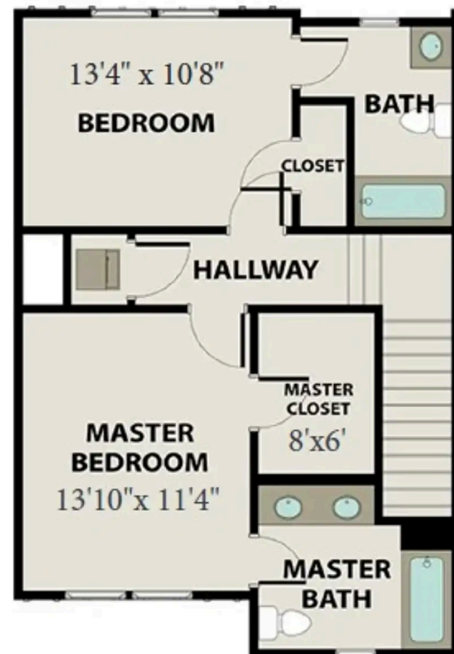
**SQ FT**  
**1,359**

**PARKING**

### Exterior Options



**MAIN FLOOR PLAN**



**UPPER FLOOR PLAN**



# The Cumberland Exterior



**BEDS**  
**2**

**BATHS**  
**3**

**SQ FT**  
**1,359**

**PARKING**

## Exterior Options

