

# Potranco Oaks

Davidson Homes in Castroville, TX

Welcome to Potranco Oaks by Davidson Homes – an enchanting community nestled in the heart of charming Castroville, TX. Each homesite boasts a generous width of 105 feet and spans from .4 to .7 acres, offering ample space for your dream home. Immerse yourself in the tranquil ambiance of lush surroundings, complete with trees and greenbelts, all while being mere minutes away from a diverse array of amenities and thriving employment hubs.

## Features

Excellent Schools  
Large Homesites  
Green Belt

## Local Schools

Potranco Elementary  
Loma Alta Middle  
Medina Valley Middle  
Medina Valley High  
Medina Valley ISD



Community Address  
**113 Grace Ave.**

New Homes

**06**

Floor Plans

**04**

Homes from the

**\$520s**

Copyright 2024 Davidson Homes, Inc. | All Rights Reserved | Davidson Homes is a leading builder of quality new homes across the Southeast. Davidson Homes reserves the right to adjust items listed without prior notice or obligation. Such items may include, but are not limited to, options, included features and community information, pricing, amenities, square footage, terms or availability. Features, options, floor plans, elevations, colors, dimensions and photographs are for illustration purposes and may vary from homes built. Please see your community specialist for details. Equal housing lender. Last Updated 05/19/2024.





Potranco Oaks in Castroville, TX

## Quick Move-In Homes

UPDATED HOMES  
05/19/2024 06

Marcela C. & Lauren C.  
Call (210) 920-8294

COMMUNITY ADDRESS  
113 Grace Ave.



May '24

~~\$539,000~~ **\$524,000**

3 Beds 2.5 Baths 2,730 Sq Ft

147 Matthew Path | #20-04

The Foster D Plan



May '24

~~\$569,000~~ **\$554,000**

4 Beds 3.5 Baths 2,774 Sq Ft

131 Matthew Path | #21-04

The Oxford E Plan



May '24

~~\$619,000~~ **\$604,000**

4 Beds 4.5 Baths 3,657 Sq Ft

130 Matthew Path | #2-09

The Ashford C Plan



Jul '24

~~\$751,450~~ **\$724,000**

4 Beds 3.5 Baths 3,568 Sq Ft

534 Englewood Lane | #5-04

The Summerlin A Plan



Aug '24

~~\$629,028~~ **\$619,028**

4 Beds 4.5 Baths 3,657 Sq Ft

200 Matthew Path | #6-09

The Ashford E Plan



Sep '24

~~\$589,000~~ **\$579,000**

4 Beds 3.5 Baths 2,774 Sq Ft

134 Landon Path | #13-03

The Oxford D Plan





Potranco Oaks in Castroville, TX

# Community Homesite Map

Marcela C. & Lauren C.

Call (210) 920-8294

## POTRANCO OAKS

Castroville, Texas



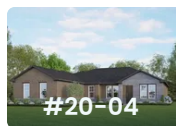
QUICK MOVE-IN

COMING SOON

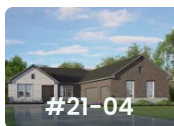
AVAILABLE

SOLD

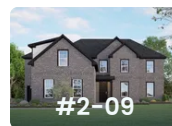
## Featured Homes for Sale



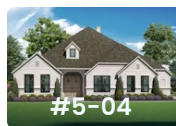
**The Foster D**  
147 Matthew Path  
**\$524,000**



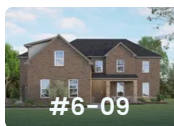
**The Oxford E**  
131 Matthew Path  
**\$554,000**



**The Ashford C**  
130 Matthew Path  
**\$604,000**



**The Summerlin A**  
534 Englewood Lane  
**\$724,000**



**The Ashford E**  
200 Matthew Path  
**\$619,028**



**The Oxford D**  
134 Landon Path  
**\$579,000**

Copyright 2024 Davidson Homes, Inc. | All Rights Reserved | Davidson Homes is a leading builder of quality new homes across the Southeast. Davidson Homes reserves the right to adjust items listed without prior notice or obligation. Such items may include, but are not limited to, options, included features and community information, pricing, amenities, square footage, terms or availability. Features, options, floor plans, elevations, colors, dimensions and photographs are for illustration purposes and may vary from homes built. Please see your community specialist for details. Equal housing lender.





# The Foster C

## Exterior Options



**BEDS**  
**3**

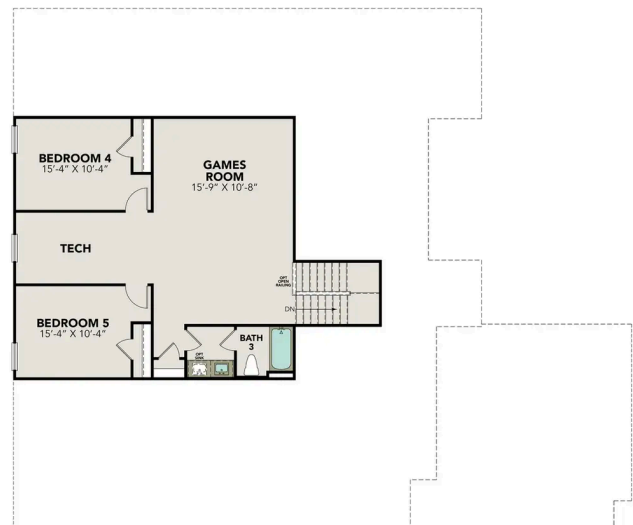
**BATHS**  
**2.5**

**SQ FT**  
**2,730**

**PARKING**  
**3**



**MAIN FLOOR PLAN**



**OPTIONAL UPPER FLOOR PLAN**



## The Foster C

Welcome to The Foster! Embrace luxury with this one-story home's next-level features, including a three-car garage, elegant dining room and open-concept family room. Inside, the kitchen welcomes your guests and leads to the covered patio outside. Enter the primary suite and fall in love with the gorgeous primary bath.

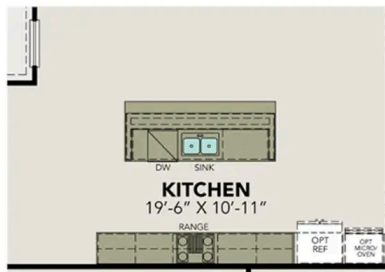
Make it your own with The Foster's flexible floor plan. Just know that offerings vary by location, so please discuss our standard features and upgrade options with your community's agent.

BEDS  
**3**

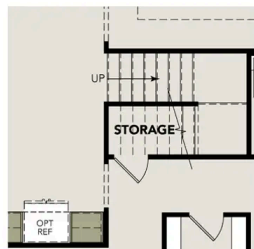
BATHS  
**2.5**

SQ FT  
**2,730**

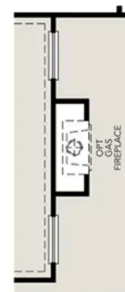
GARAGE  
**3**



**INCLUDED  
GOURMET  
KITCHEN**



**OPT  
STAIRS**



**OPT  
FIREPLACE**

### OPTIONS

# The Oxford E

## Exterior Options



**BEDS**  
**4**

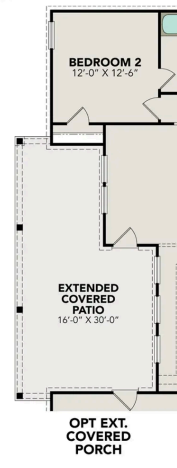
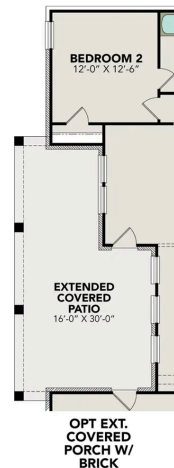
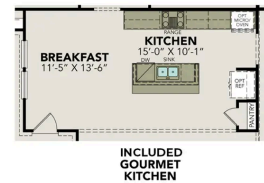
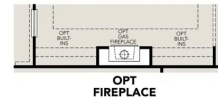
**BATHS**  
**3.5**

**SQ FT**  
**2,774**

**PARKING**  
**3**



MAIN FLOOR PLAN



OPTIONS

# The Ashford D

## Exterior Options



**BEDS**  
**4**

**BATHS**  
**4.5**

**SQ FT**  
**3,657**

**PARKING**  
**3**



**MAIN FLOOR PLAN**



**UPPER FLOOR PLAN**



## The Ashford D

From its five bedrooms to its 4.5 bathrooms, The Ashford is ready for you and your whole family. It showcases a spacious primary bedroom, private dining room/study and three-car garage. On its main floor, you'll discover a massive, open-concept gourmet kitchen/family room that leads to the porch outside. Elsewhere, the layout's main-level guest retreat make this home perfect for multi-generational families.

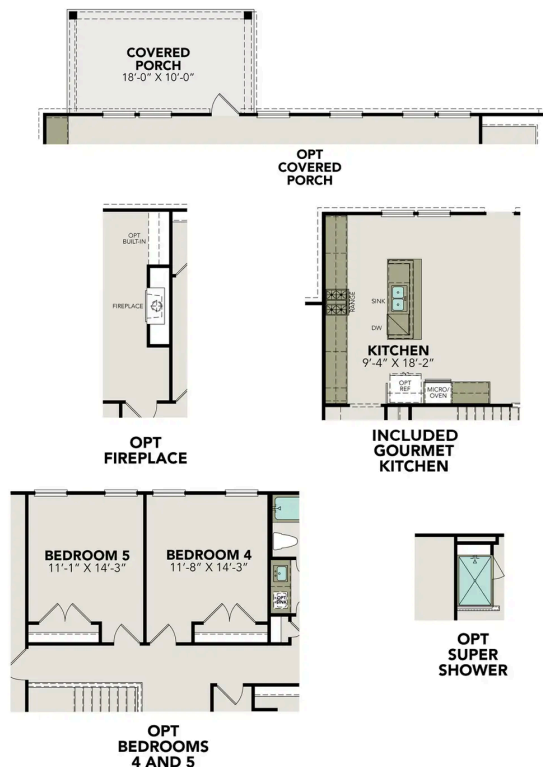
Make it your own with The Ashford's flexible floor plan. Just know that offerings vary by location, so please discuss our standard features and upgrade options with your community's agent.

BEDS  
**4**

BATHS  
**4.5**

SQ FT  
**3,657**

GARAGE  
**3**



### OPTIONS

# The Summerlin A



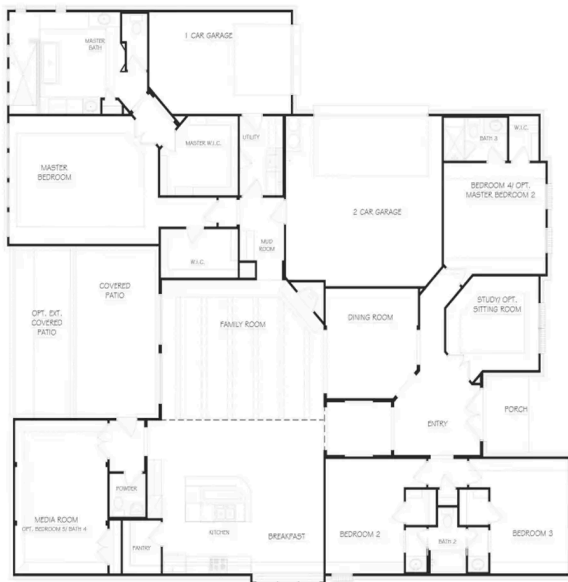
**BEDS**  
**4**

**BATHS**  
**3.5**

**SQ FT**  
**3,568**

**PARKING**  
**3**

## Exterior Options



**MAIN FLOOR PLAN**



**OPTIONS**