

# Stagecoach Corner

Davidson Homes in Mebane, NC

We're excited to introduce Stagecoach Corner, our newest new construction community located in Mebane, NC! Nestled in a prime location, this charming community will offer the perfect balance of relaxation and convenience.

Residents enjoy close proximity to Downtown Mebane, with access local shopping, dining, and cultural attractions. The Tanger Shopping Outlets offer a range of retail options, while Lake Michael Park provides a scenic spot for relaxation and outdoor activities. Enjoy easy commutes to both Duke University and UNC Chapel Hill!

## Features

Great Mebane Location  
Main Level Guest Suites  
Close to Downtown Mebane

## Local Schools

Efland Cheeks Global Elem...  
Gravelly Hill Middle  
Cedar Ridge High



Community Address

409 Reinsman Court

New Homes

07

Floor Plans

06

Homes from the

\$400s

Copyright 2024 Davidson Homes, Inc. | All Rights Reserved | Davidson Homes is a leading builder of quality new homes across the Southeast. Davidson Homes reserves the right to adjust items listed without prior notice or obligation. Such items may include, but are not limited to, options, included features and community information, pricing, amenities, square footage, terms or availability. Features, options, floor plans, elevations, colors, dimensions and photographs are for illustration purposes and may vary from homes built. Please see your community specialist for details. Equal housing lender. Last Updated 05/19/2024.





Stagecoach Corner in Mebane, NC

## Quick Move-In Homes

UPDATED  
05/19/2024

HOMES  
07

Kellie Garrett  
Call (919) 893-0265

COMMUNITY ADDRESS  
409 Reinsman Court



Ready!

~~\$499,900~~ **\$479,000**

5 Beds 3 Baths 2,340 Sq Ft

809 Journey Lane | #16

The Willow B Plan



May '24

**\$474,000**

5 Beds 3 Baths 2,340 Sq Ft

440 Reinsman Court | #6

The Willow B Plan



Jun '24

**\$489,000**

4 Beds 3 Baths 2,483 Sq Ft

425 Reinsman Court | #11

The Willow D Plan



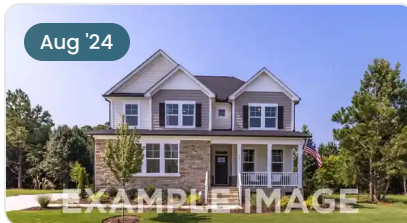
Jun '24

**\$499,000**

4 Beds 3.5 Baths 2,387 Sq Ft

437 Reinsman Court | #8

The Ash B Plan



Aug '24

**\$489,000**

4 Beds 3 Baths 2,340 Sq Ft

801 Journey Lane | #14

The Willow B Plan



Aug '24

**\$494,000**

3 Beds 2.5 Baths 2,505 Sq Ft

805 Journey Lane | #15

The Chestnut Plan



**\$534,000**

4 Beds 4.5 Baths 3,104 Sq Ft

433 Reinsman Court | #9

The Hickory A Plan





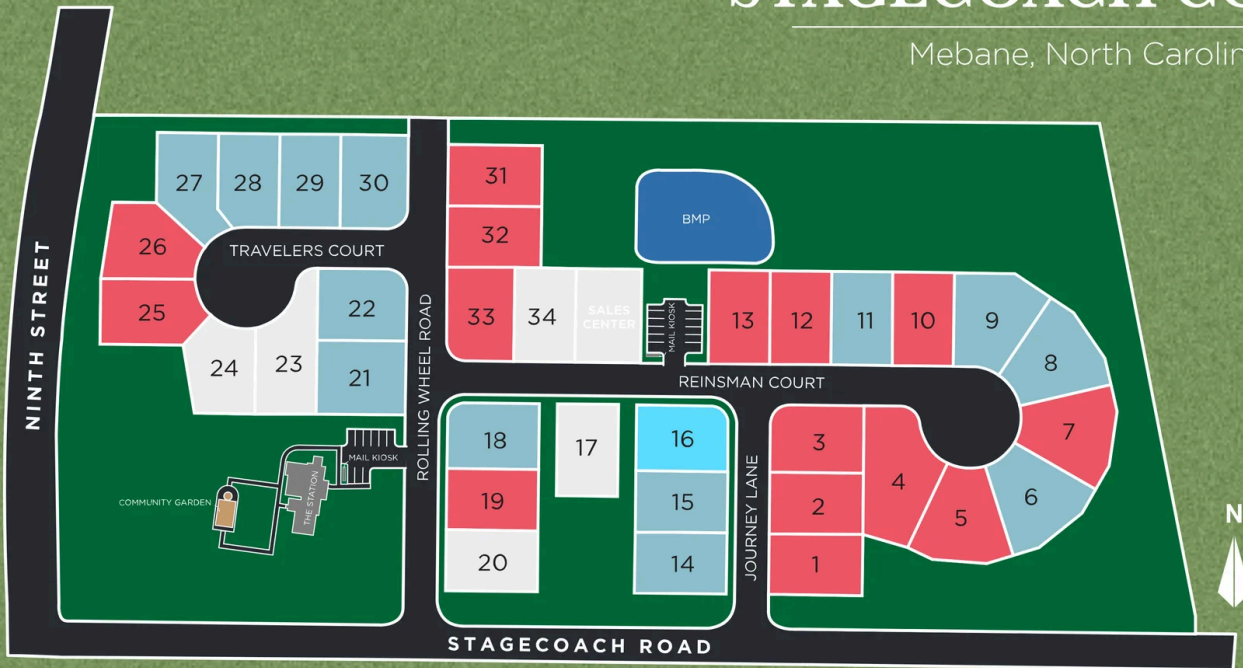
Stagecoach Corner in Mebane, NC

## Community Homesite Map

Kellie Garrett  
Call (919) 893-0265

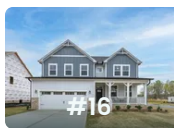
### STAGECOACH CORNER

Mebane, North Carolina

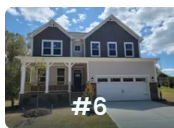


MOVE-IN READY QUICK MOVE-IN COMING SOON SOLD

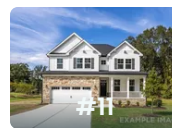
## Featured Homes for Sale



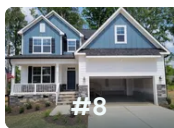
**The Willow B**  
809 Journey Lane  
**\$479,000**



**The Willow B**  
440 Reinsman Court  
**\$474,000**



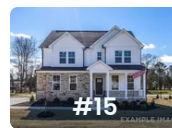
**The Willow D**  
425 Reinsman Court  
**\$489,000**



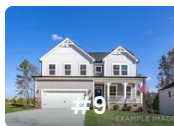
**The Ash B**  
437 Reinsman Court  
**\$499,000**



**The Willow B**  
801 Journey Lane  
**\$489,000**



**The Chestnut**  
805 Journey Lane  
**\$494,000**



**The Hickory A**  
433 Reinsman Court  
**\$534,000**





# The Ash

## Exterior Options

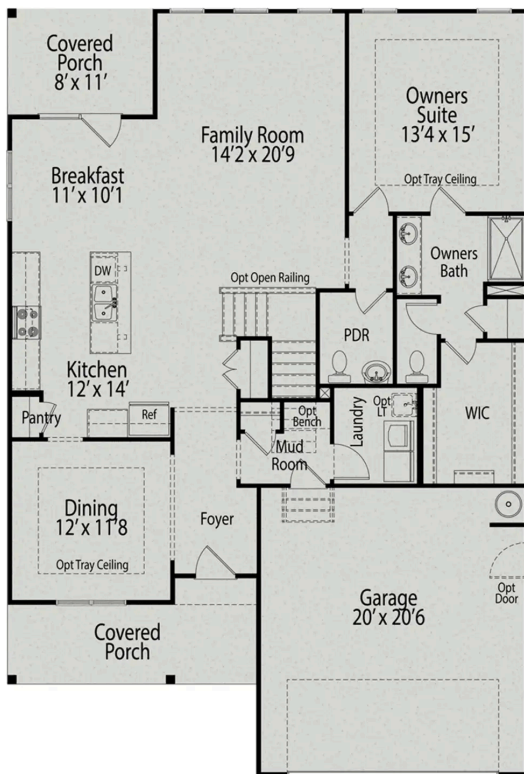


**BEDS**  
**3**

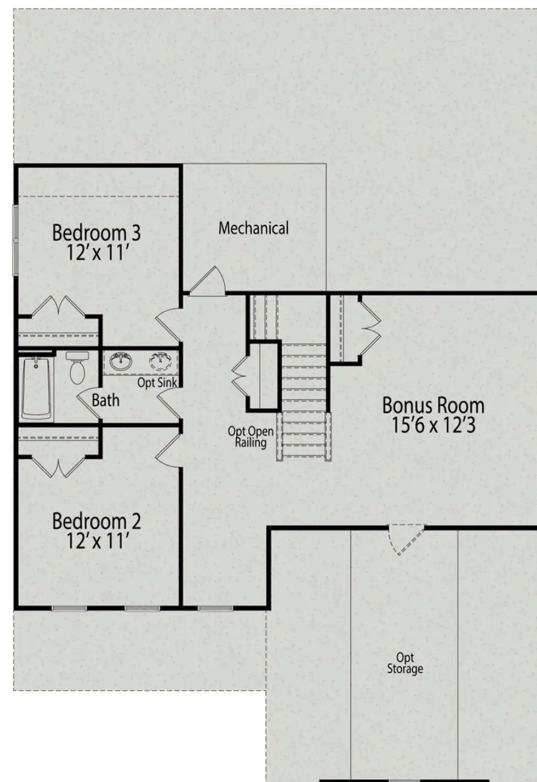
**BATHS**  
**2.5**

**SQ FT**  
**2,401**

**PARKING**  
**2**



**MAIN FLOOR PLAN**



**UPPER FLOOR PLAN**



# The Ash

Inside The Ash's handsome exterior lies a coveted, open floor plan. The Foyer welcomes guests past an elegant Dining Room and into a stunning Family Room. The rear Porch offers a calm respite, and the first floor Owner's Suite highlights a massive walk-in closet. On the second floor, the plan offers two additional bedrooms and a generous Bonus Room – perfect for game nights.

Make it your own with The Ash's flexible floor plan, showcasing an optional fireplace, a fourth bedroom option and more! Offerings vary by location, so please discuss your options with your community's agent.

BEDS  
**3**

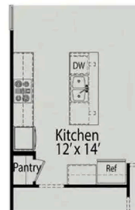
BATHS  
**2.5**

SQ FT  
**2,401**

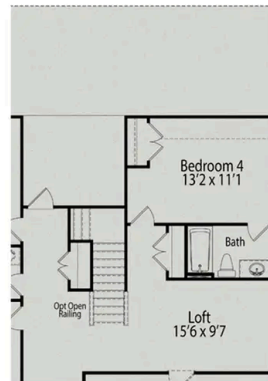
GARAGE  
**2**



OPTIONAL SPA SHOWER



OPTIONAL GOURMET KITCHEN



OPTIONAL BEDROOM 4 WITH BATH



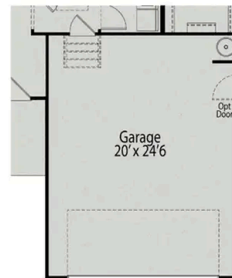
OPTIONAL EXTENDED COVERED PORCH  
OR OPTIONAL SCREENED PORCH



OPTIONAL INSET  
FIREPLACE



OPTIONAL  
FIREPLACE



OPTIONAL 4' GARAGE  
EXTENSION

## PLAN OPTIONS

# The Gavin A



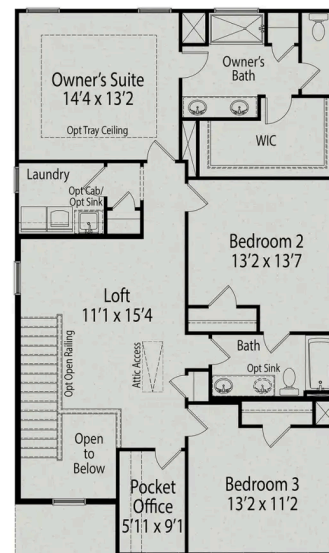
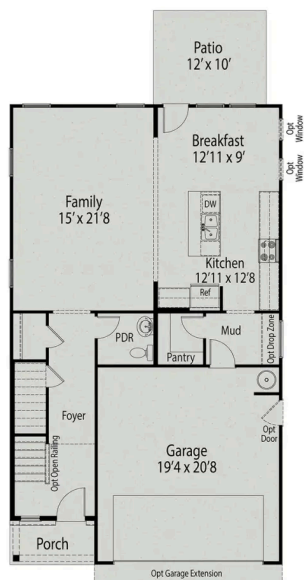
**BEDS**  
**3**

**BATHS**  
**2.5**

**SQ FT**  
**2,278**

**PARKING**  
**2**

## Exterior Options





## The Gavin A

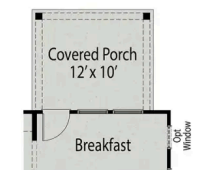
Looking for space that works, this design is for you! This two-story plan offers as much space as possible. Open main living area offering ample light and smooth traffic flow. The kitchen is spectacular offering plenty of cabinetry and the island is the perfect size. Mudroom and pantry directly off the kitchen for ease of entry and access. Prefer four bedrooms instead of three, check out the optional bedroom four with bath three option, a great way to create the space that fits your needs. Don't forget the pocket office, yes, we made space for that!

BEDS  
**3**

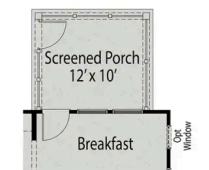
BATHS  
**2.5**

SQ FT  
**2,278**

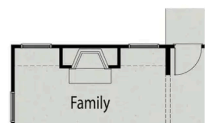
GARAGE  
**2**



OPTIONAL COVERED PORCH



OPTIONAL SCREENED PORCH



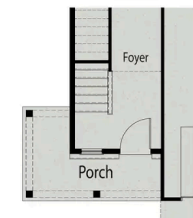
OPTIONAL FIREPLACE



OPTIONAL SPA SHOWER

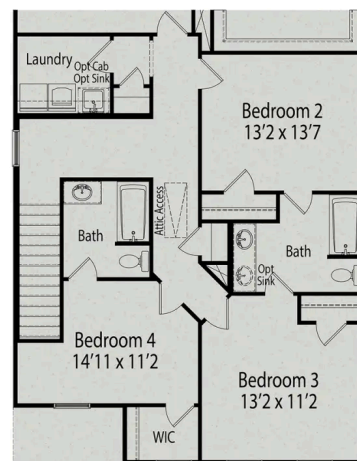


OPTIONAL GOURMET KITCHEN



OPTIONAL EXTENDED PORCH

### OPTIONS



OPTIONAL BEDROOM 4 WITH BATH  
AND ALTERNATE BEDROOM 2, 3 AND BATH

### OPTIONS

# The Grace A



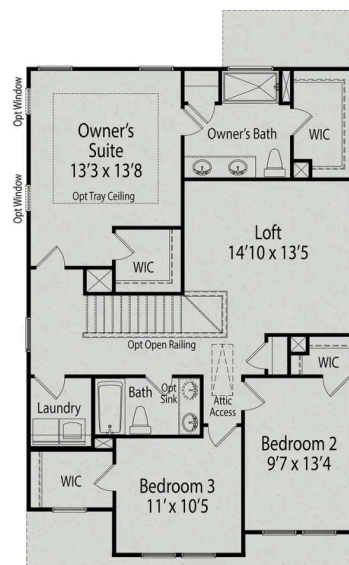
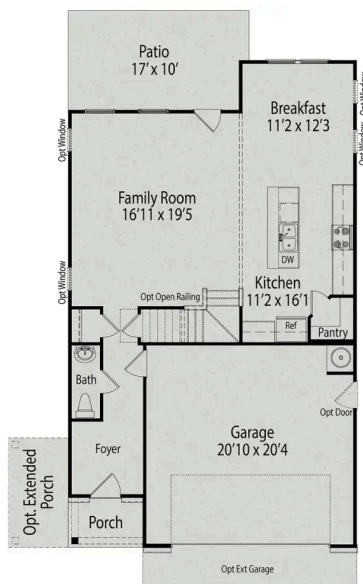
**BEDS**  
**3**

**BATHS**  
**2.5**

**SQ FT**  
**2,020**

**PARKING**  
**2**

## Exterior Options





# The Grace A

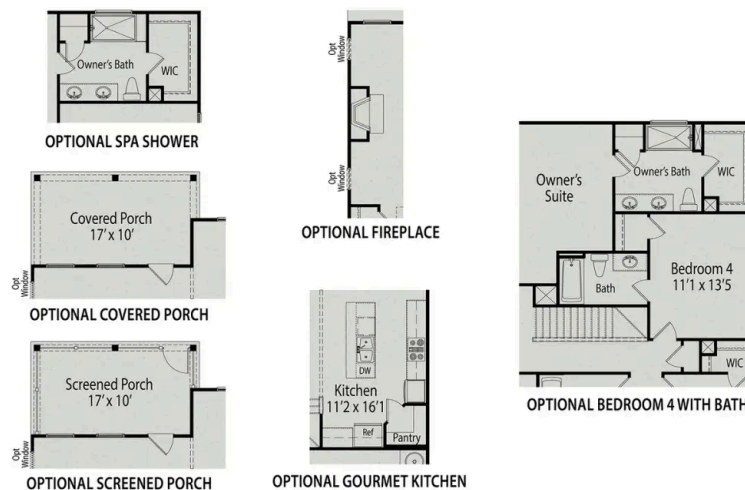
Show off your style with the Grace's open-concept floor plan. The family room is perfect for entertaining. The kitchen is complete with a cooks island, an overhang for barstools, a spacious corner pantry, and a cozy breakfast nook. The oversized patio offers enjoyable outdoor space. The private owner's suite is tucked away from the secondary bedrooms. Prefer four bedrooms instead of three? If so, check out the optional bedroom four with an additional bath option. Make this home your own!

BEDS  
**3**

BATHS  
**2.5**

SQ FT  
**2,020**

GARAGE  
**2**



## OPTIONS

# The Chestnut

## Exterior Options

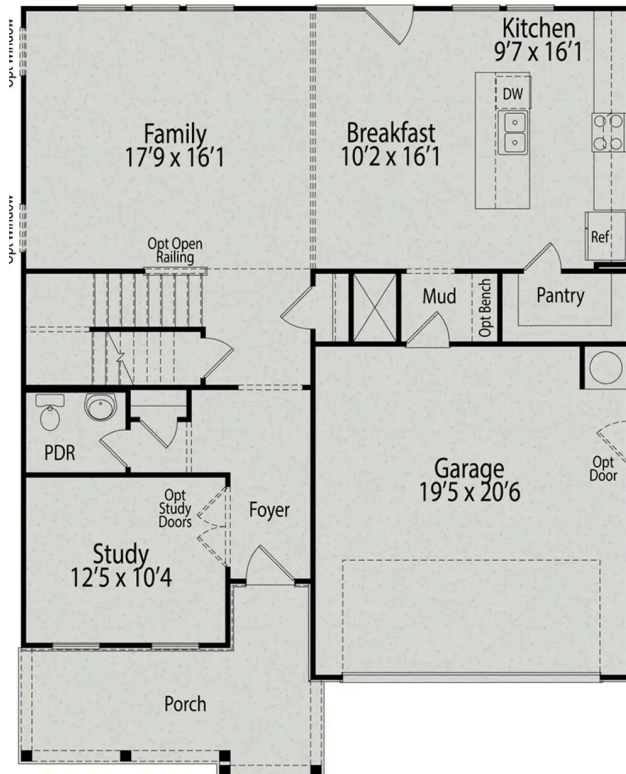


**BEDS**  
**3**

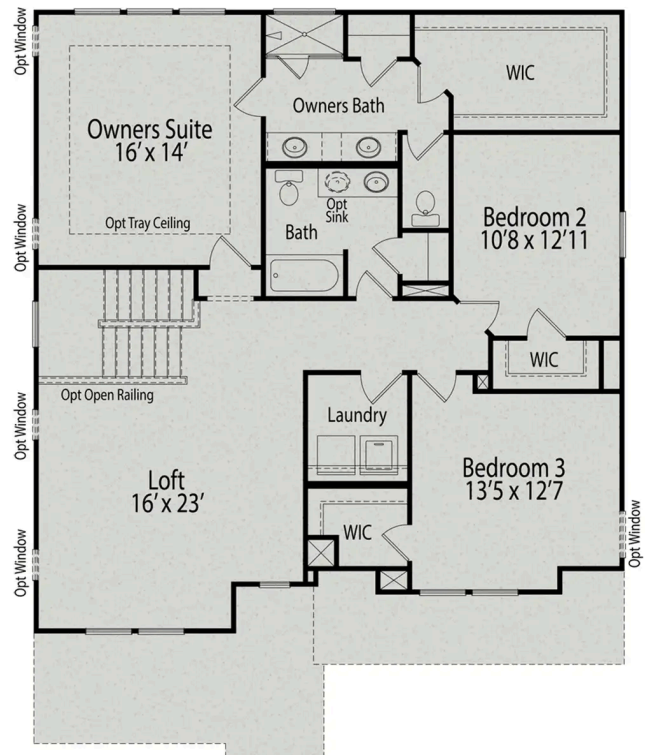
**BATHS**  
**2.5**

**SQ FT**  
**2,505**

**PARKING**  
**2**



**MAIN FLOOR PLAN**



**UPPER FLOOR PLAN**



# The Chestnut

From its spacious porch to its front columns, The Chestnut introduces its open floor plan with a stunning exterior. Inside, the light-filled kitchen with large pantry overlooks an open-concept living/dining space. Upstairs, the isolated Owner's Suite is complete with an impressive walk-in closet and Owner's Bath. The Chestnut also features a first floor Study, a second floor Loft and a pair of additional bedrooms with their own generous walk-in closets.

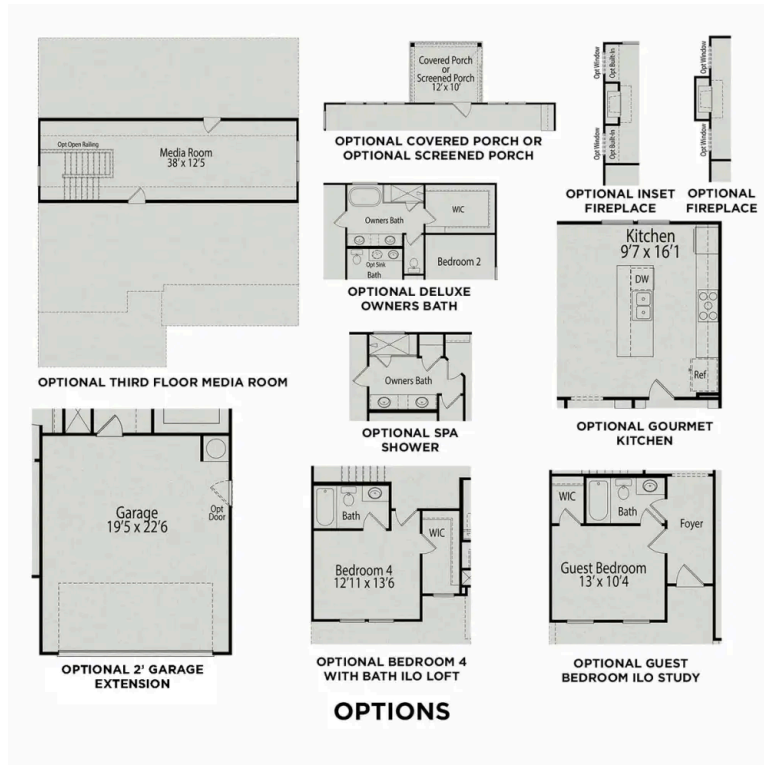
Make it your own with The Chestnut's flexible floor plan, featuring an optional gourmet kitchen, up to five bedrooms and more! Offerings vary by location, so please discuss your options with your community's agent.

BEDS  
**3**

BATHS  
**2.5**

SQ FT  
**2,505**

GARAGE  
**2**



## OPTIONS

# The Hickory

## Exterior Options

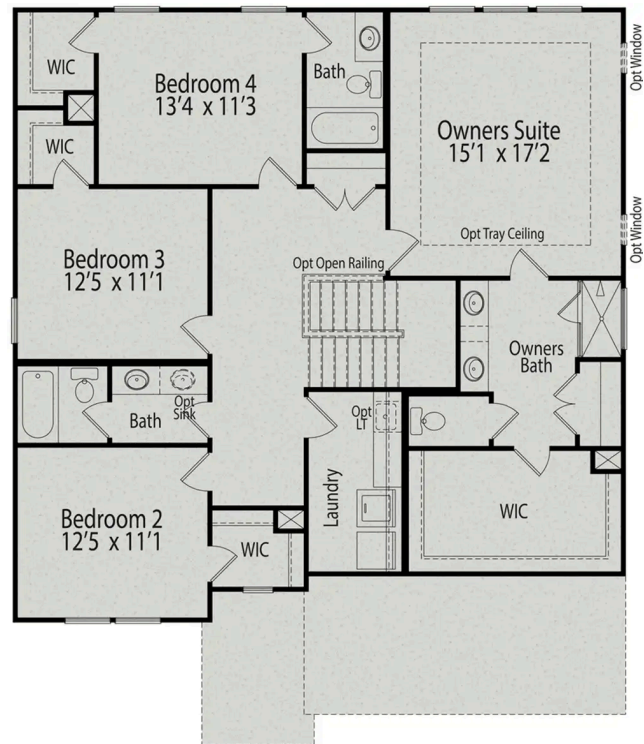
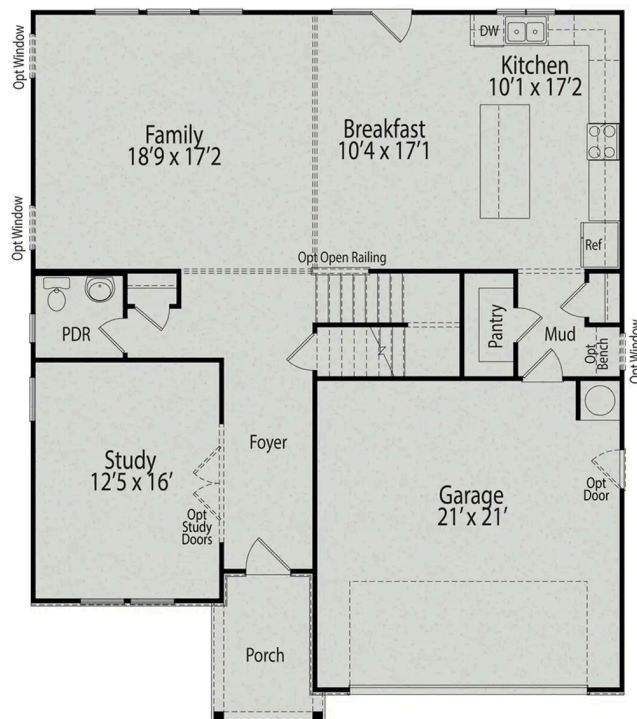


**BEDS**  
**4**

**BATHS**  
**3.5**

**SQ FT**  
**2,735**

**PARKING**  
**2**



**MAIN FLOOR PLAN**

**UPPER FLOOR PLAN**



# The Hickory

The Hickory's windows fill the open floor plan with natural light, welcoming you into this charming home. The Kitchen showcases ample counterspace, overlooking the Breakfast and Family Room. A large Study on the first floor offers potential, and the home's second floor features four bedrooms, each with plenty of closet space. The Owner's Suite is separate from the other bedrooms for added privacy, and the fourth bedroom features its own private bath.

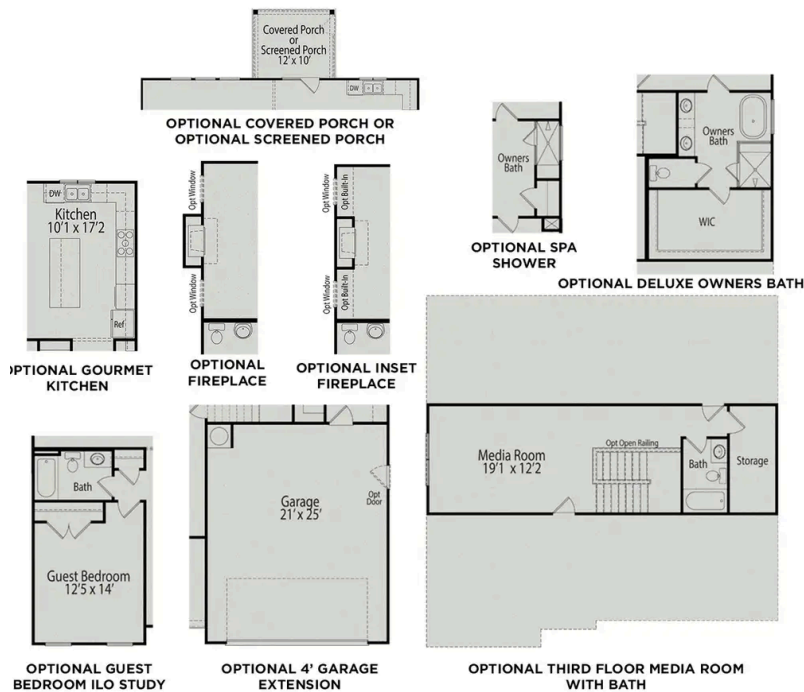
Make it your own with The Hickory's flexible floor plan, showcasing an optional gourmet kitchen, a fifth bedroom and more! Offerings vary by location, so please discuss your options with your community's agent.

BEDS  
**4**

BATHS  
**3.5**

SQ FT  
**2,735**

GARAGE  
**2**



## PLAN OPTIONS

# The Willow B

## Exterior Options

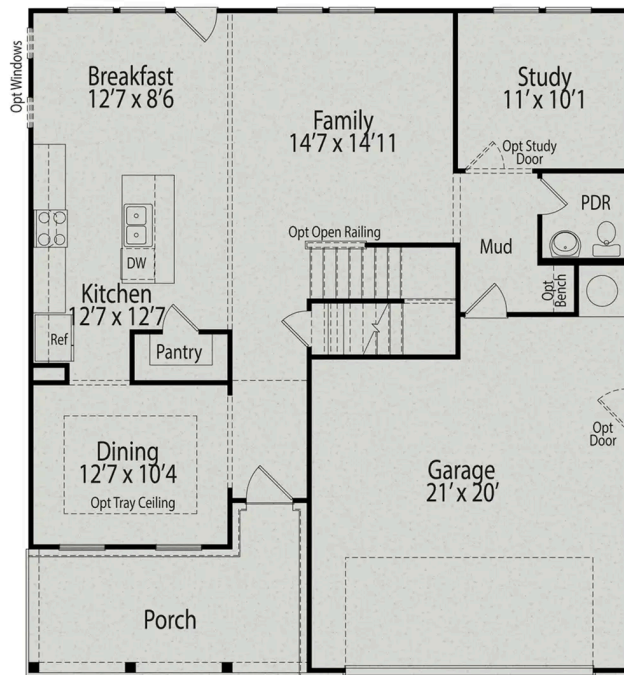


**BEDS**  
**3**

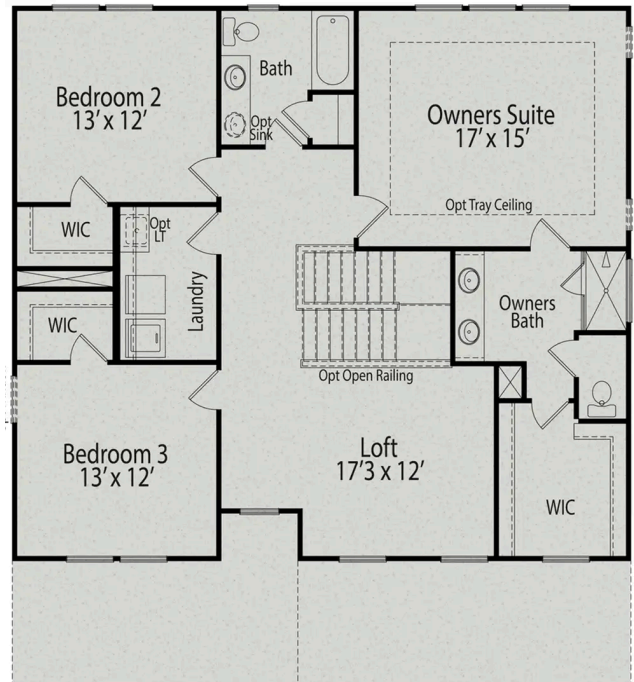
**BATHS**  
**2.5**

**SQ FT**  
**2,340**

**PARKING**  
**2**



**MAIN FLOOR PLAN**



**UPPER FLOOR PLAN**

## The Willow B

The Willow's impressive front porch welcomes you into a modern, open space, complete with a formal Dining Room and Study. The Kitchen overlooks an open-concept Family Room. The second floor features a spacious Owner's Suite with a large walk-in closet and Owner's Bath along with two additional Bedrooms with ample walk-ins closets of their own.

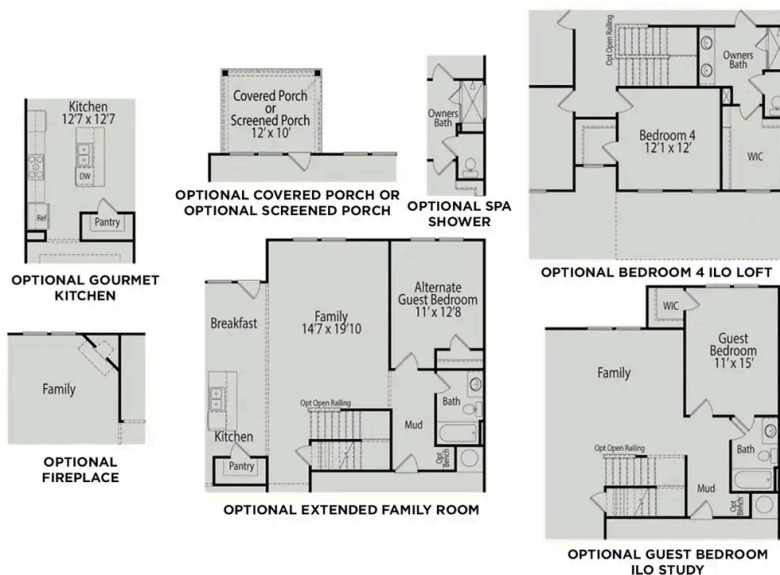
Make it your own with The Willow's flexible floor plan, showcasing an optional gourmet kitchen, a fireplace and more! Offerings vary by location, so please discuss your options with your community's agent.

BEDS  
**3**

BATHS  
**2.5**

SQ FT  
**2,340**

GARAGE  
**2**



### PLAN OPTIONS