

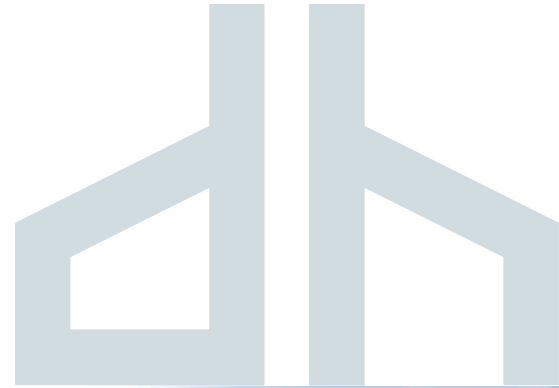
# Tobacco Road

Davidson Homes in Angier, NC

At Davidson Homes, we are thrilled to introduce our upcoming community - Tobacco Road, nestled in the charming town of Angier, North Carolina. With this picturesque setting, we're creating an inviting community for families, young professionals, and retirees alike, offering elegant new homes in Tobacco Road.

## Features

Large Homesites  
3 Car Garage Options  
Ranch Plans



Community Address

128 Harvester Rd

New Homes

08

Floor Plans

07

Homes from the

\$400s

Copyright 2024 Davidson Homes, Inc. | All Rights Reserved | Davidson Homes is a leading builder of quality new homes across the Southeast. Davidson Homes reserves the right to adjust items listed without prior notice or obligation. Such items may include, but are not limited to, options, included features and community information, pricing, amenities, square footage, terms or availability. Features, options, floor plans, elevations, colors, dimensions and photographs are for illustration purposes and may vary from homes built. Please see your community specialist for details. Equal housing lender. Last Updated 05/19/2024.





Tobacco Road in Angier, NC

## Quick Move-In Homes

UPDATED  
05/19/2024

HOMES  
08

Kristen M. & Amy K.  
Call (984) 207-3640

COMMUNITY ADDRESS  
128 Harvester Rd



**\$499,000**

3 Beds 3 Baths 2,479 Sq Ft

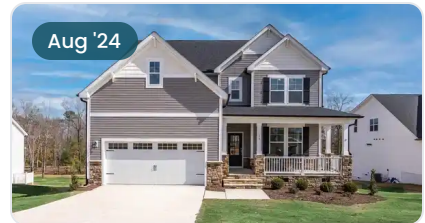
63 Golden Leaf Farms Road | #12  
The Birch II A Plan



**\$554,000**

4 Beds 3.5 Baths 2,524 Sq Ft

83 Golden Leaf Farms Road | #13  
The Magnolia A Plan



**\$547,000**

5 Beds 5 Baths 3,104 Sq Ft

157 Looping Court | #24  
The Hickory D Plan



**\$409,000**

3 Beds 2 Baths 1,917 Sq Ft

14 Looping Court | #36  
The Daphne C Plan



**\$498,000**

4 Beds 3.5 Baths 2,555 Sq Ft

34 Looping Court | #35  
The Ash D Plan



**\$629,000**

4 Beds 3.5 Baths 3,451 Sq Ft

128 Harvester Road | #3  
The Magnolia A Plan



**\$589,000**

5 Beds 4.5 Baths 3,337 Sq Ft

62 Golden Leaf Farms Road | #37  
The Cypress C II Plan



**\$658,000**

4 Beds 3.5 Baths 3,451 Sq Ft

91 Grading Stick Court | #56  
The Magnolia B Plan







Tobacco Road in Angier, NC

# Community Homesite Map

Kristen M. & Amy K.

Call (984) 207-3640

## TOBACCO ROAD

Angier, North Carolina



 QUICK MOVE-IN

 COMING SOON

 AVAILABLE

 SOLD

## Featured Homes for Sale



### Birch II A

63 Golden Leaf Farms Road

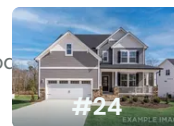
**\$499,000**



### The Magnolia A

83 Golden Leaf Farms Road

**\$554,000**



### The Hickory D

157 Looping Court

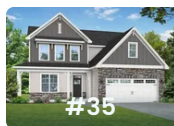
**\$547,000**



### The Daphne C

14 Looping Court

**\$409,000**



### The Ash D

34 Looping Court

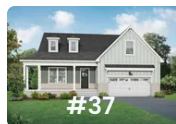
**\$498,000**



### The Magnolia A

128 Harvester Road

**\$629,000**



### The Cypress C II

62 Golden Leaf Farms Road

**\$589,000**



### The Magnolia B

91 Grading Stick Court

**\$658,000**



# The Daphne C

## Exterior Options

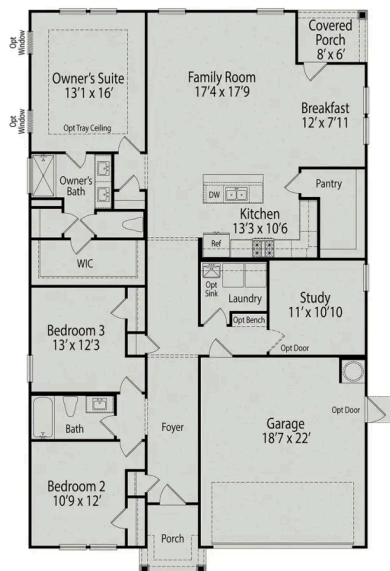


**BEDS**  
**3**

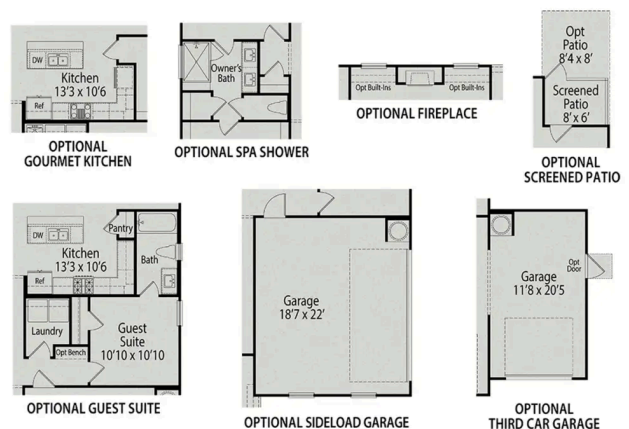
**BATHS**  
**2**

**SQ FT**  
**1,917**

**PARKING**  
**2**



**MAIN FLOOR PLAN**



**OPTIONS**



# The Willow E

## Exterior Options

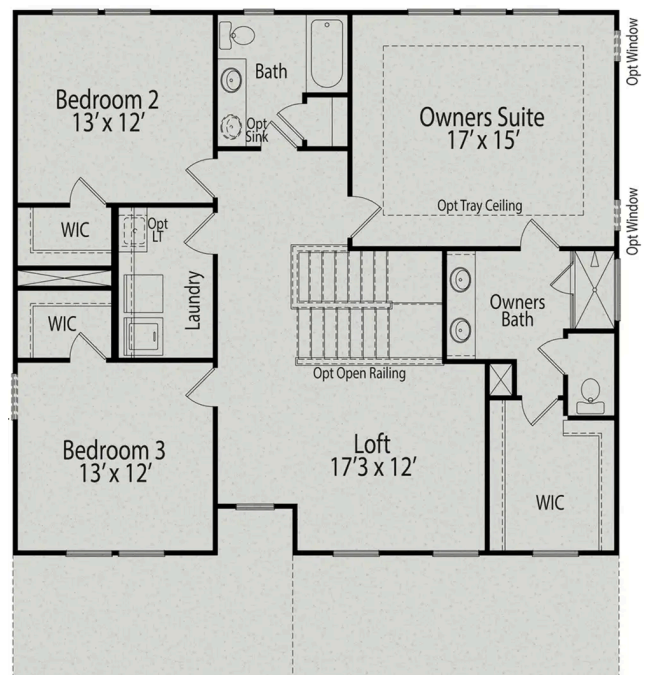
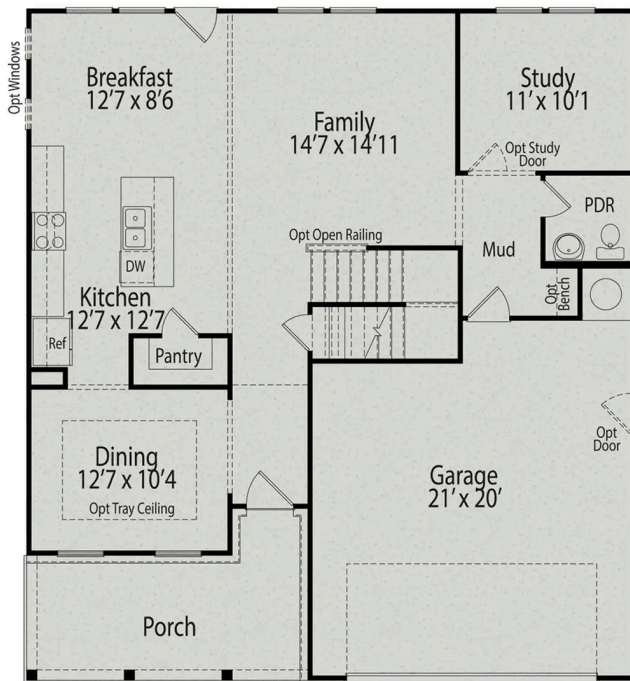


**BEDS**  
**3**

**BATHS**  
**2.5**

**SQ FT**  
**2,340**

**PARKING**  
**2**



MAIN FLOOR PLAN

UPPER FLOOR PLAN

## The Willow E

The Willow's impressive front porch welcomes you into a modern, open space, complete with a formal Dining Room and Study. The Kitchen overlooks an open-concept Family Room. The second floor features a spacious Owner's Suite with a large walk-in closet and Owner's Bath along with two additional Bedrooms with ample walk-ins closets of their own.

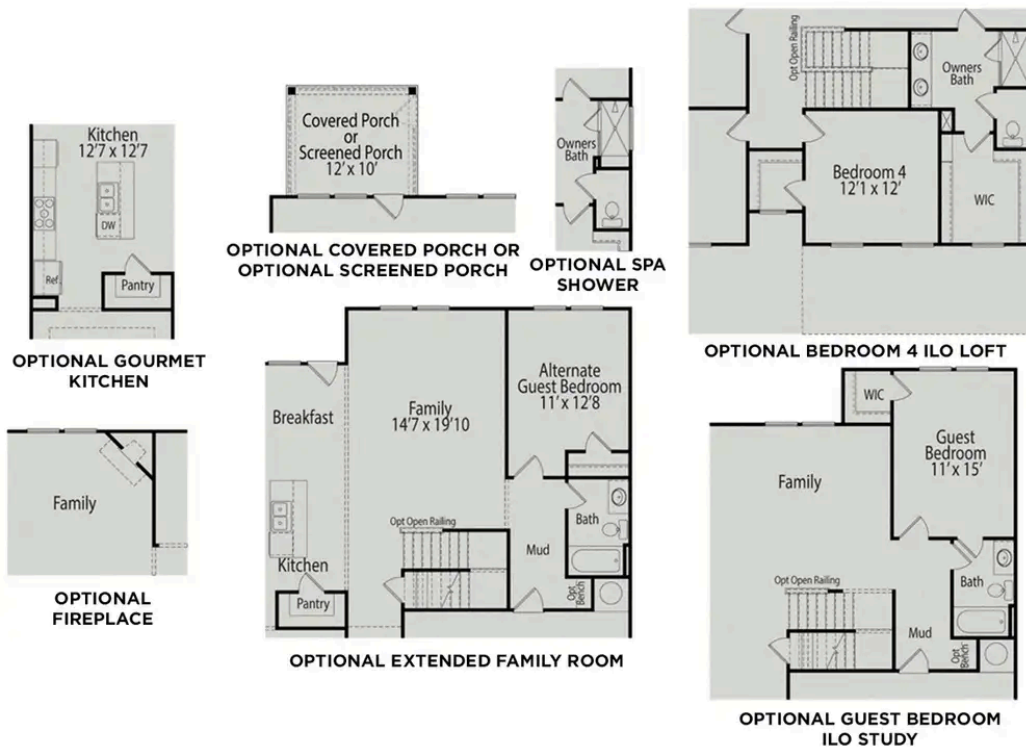
Make it your own with The Willow's flexible floor plan, showcasing an optional gourmet kitchen, a fireplace and more! Offerings vary by location, so please discuss your options with your community's agent.

BEDS  
**3**

BATHS  
**2.5**

SQ FT  
**2,340**

GARAGE  
**2**



### OPTIONS



# The Ash D

## Exterior Options

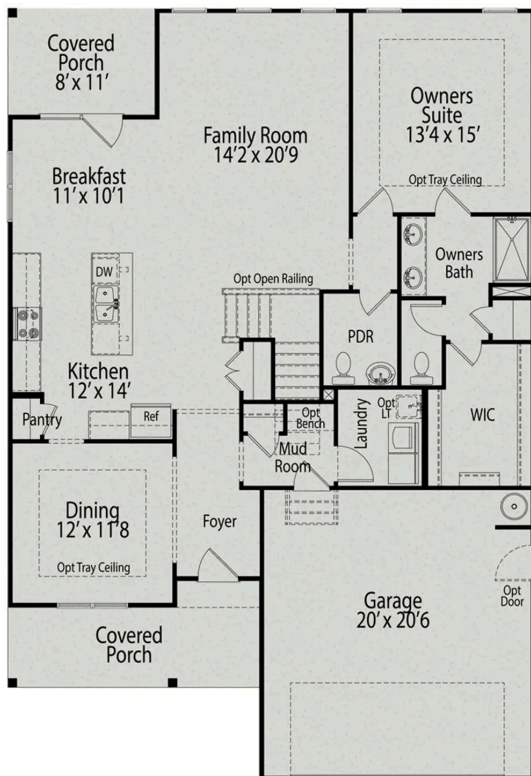


**BEDS**  
**3**

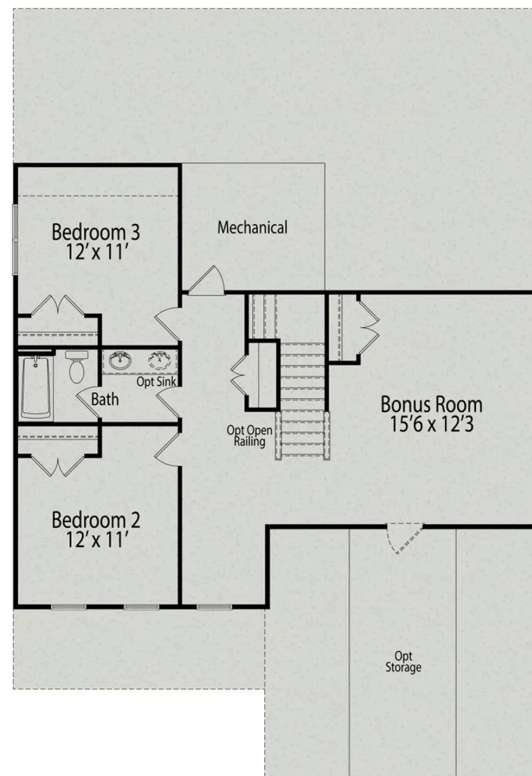
**BATHS**  
**2.5**

**SQ FT**  
**2,400**

**PARKING**  
**2**



**MAIN FLOOR PLAN**



**UPPER FLOOR PLAN**

## The Ash D

Inside The Ash's handsome exterior lies a coveted, open floor plan. The Foyer welcomes guests past an elegant Dining Room and into a stunning Family Room. The rear Porch offers a calm respite, and the first floor Owner's Suite highlights a massive walk-in closet. On the second floor, the plan offers two additional bedrooms and a generous Bonus Room – perfect for game nights.

Make it your own with The Ash's flexible floor plan, showcasing an optional fireplace, a fourth bedroom option and more! Offerings vary by location, so please discuss your options with your community's agent.

BEDS  
**3**

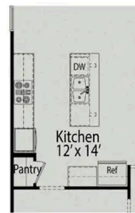
BATHS  
**2.5**

SQ FT  
**2,400**

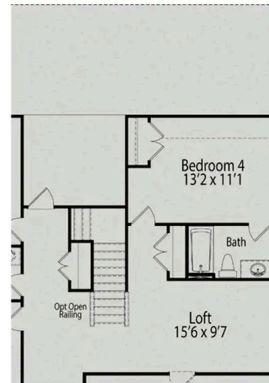
GARAGE  
**2**



OPTIONAL SPA SHOWER



OPTIONAL GOURMET KITCHEN



OPTIONAL BEDROOM 4 WITH BATH



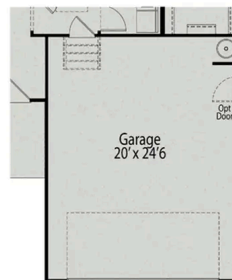
OPTIONAL EXTENDED COVERED PORCH  
OR OPTIONAL SCREENED PORCH



OPTIONAL INSET  
FIREPLACE



OPTIONAL  
FIREPLACE



OPTIONAL 4' GARAGE  
EXTENSION

### PLAN OPTIONS





## Tobacco Road in Angier, NC

Call (984) 207-3640  
DAVIDSONHOMES.COM

# The Hickory B

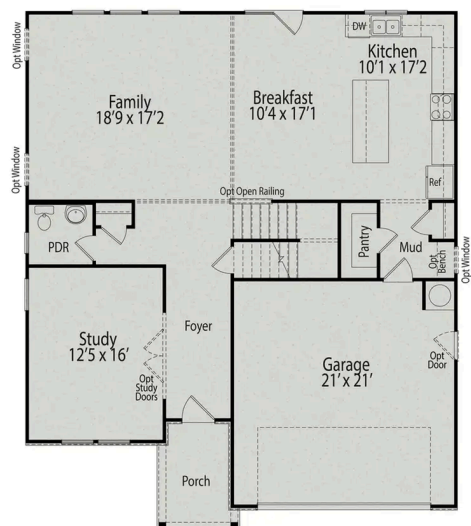


## BEDS

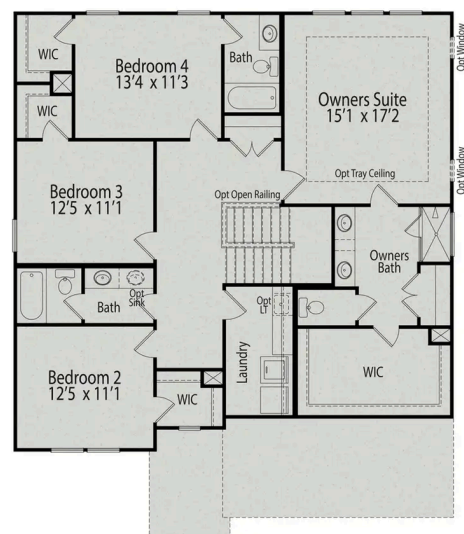
## BATHS

SQ FT  
**2,735**

## PARKING 2



## MAIN FLOOR PLAN



### UPPER FLOOR PLAN



# The Hickory B

The Hickory's windows fill the open floor plan with natural light, welcoming you into this charming home. The Kitchen showcases ample counterspace, overlooking the Breakfast and Family Room. A large Study on the first floor offers potential, and the home's second floor features four bedrooms, each with plenty of closet space. The Owner's Suite is separate from the other bedrooms for added privacy, and the fourth bedroom features its own private bath.

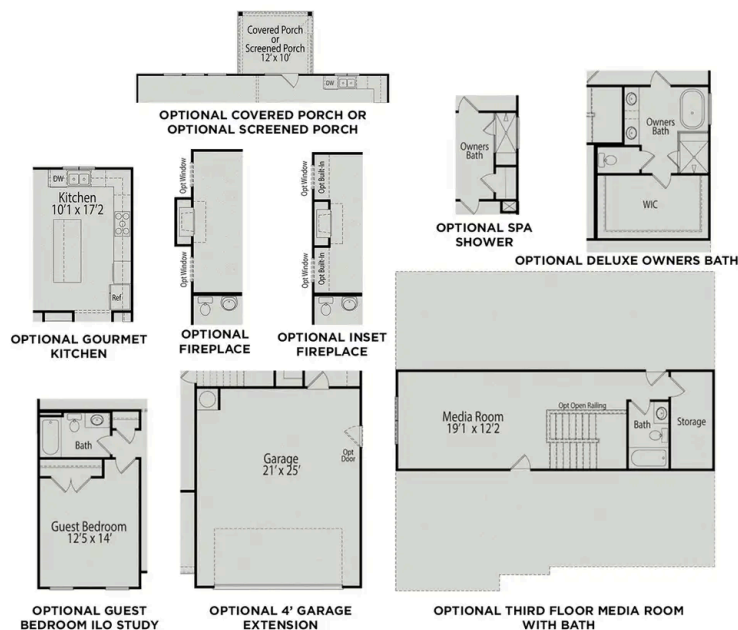
Make it your own with The Hickory's flexible floor plan, showcasing an optional gourmet kitchen, a fifth bedroom and more! Offerings vary by location, so please discuss your options with your community's agent.

BEDS  
**4**

BATHS  
**3.5**

SQ FT  
**2,735**

GARAGE  
**2**



## OPTIONS





## Tobacco Road in Angier, NC

Call (984) 207-3640  
DAVIDSONHOMES.COM

# Birch II A

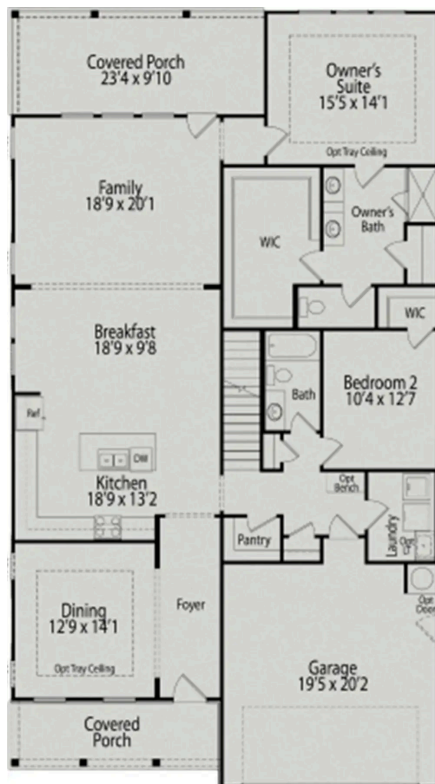


### BEDS

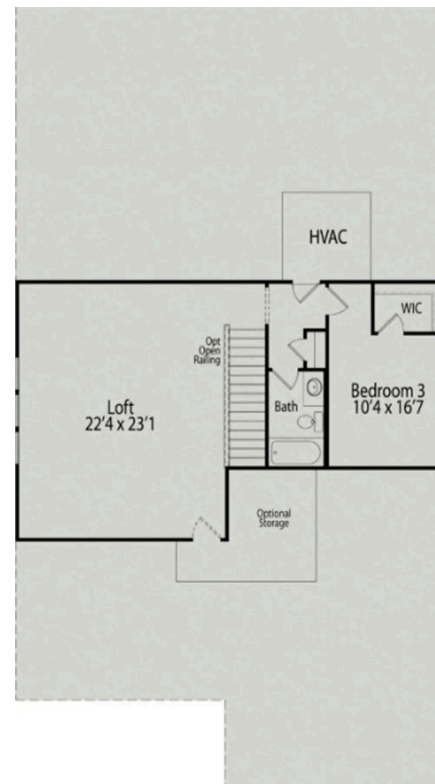
## BATHS

SQ FT  
**2,736**

## PARKING



## MAIN FLOOR PLAN



## SECOND FLOOR PLAN



## Birch II A

Within The Birch II's charming exterior lies an open, functional floor plan. The Kitchen features plenty of counterspace with close proximity to the Dining Room. The generous Family Room leads out to the large covered porch for convenient outdoor living. The private first floor Owner's Suite features plenty of light and is complete with a huge walk-in closet. On the second floor, the home features a third bedroom and impressive Loft.

Make it your own with The Birch's II's flexible floor plan, showcasing an optional gourmet kitchen, a standalone tub and more! Offerings vary by location, so please discuss your options with your community's agent.

BEDS  
**3**

BATHS  
**3**

SQ FT  
**2,736**

GARAGE  
**2**



### OPTIONS



# The Cypress C II

## Exterior Options

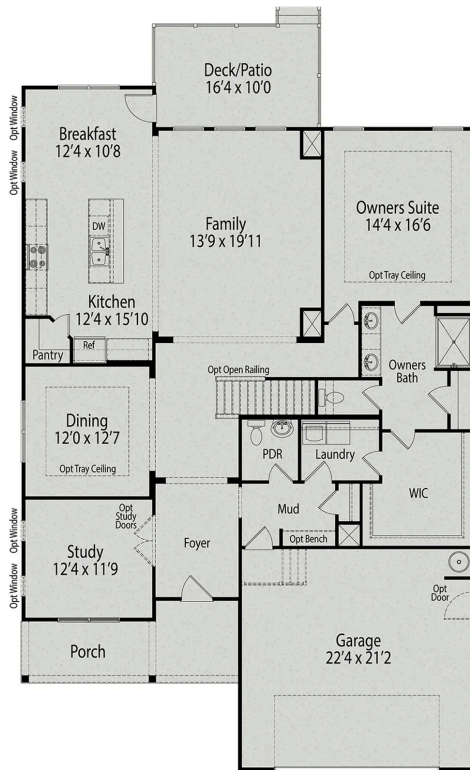


**BEDS**  
**3**

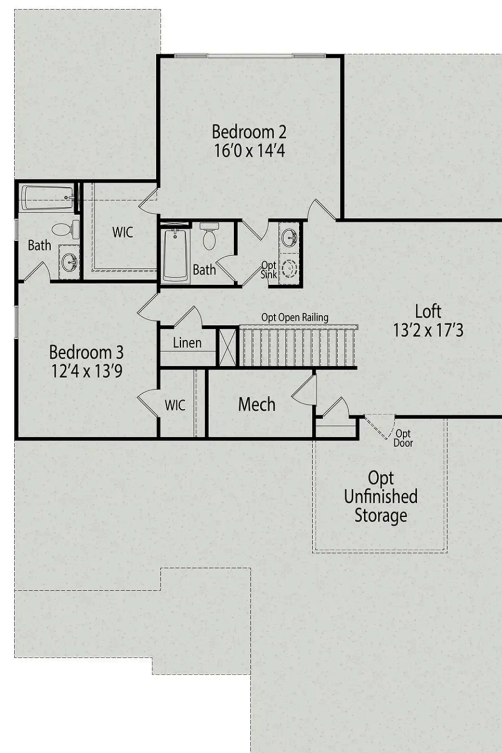
**BATHS**  
**2**

**SQ FT**  
**3,021**

**PARKING**  
**2**



**MAIN FLOOR PLAN**



**UPPER FLOOR PLAN**

# The Cypress C II

Welcome to The Cypress! The expansive front porch welcomes you into the foyer, past the study and formal dining room into the spacious open-concept kitchen and family room. This floor plan features a convenient first-floor owners suite with an impressive ensuite bath and a spacious closet connected to the home's laundry room. Upstairs, you'll find a versatile loft area and two more bedrooms, giving everyone their own space!

Make it your own with The Cypress' flexible floor plan! Offerings vary by location, please discuss your options with our New Home Consultant.

BEDS  
**3**

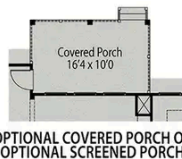
BATHS  
**2**

SQ FT  
**3,021**

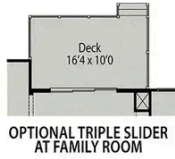
GARAGE  
**2**



OPTIONAL GUEST SUITE



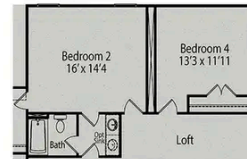
OPTIONAL COVERED PORCH OR  
OPTIONAL SCREENED PORCH



OPTIONAL TRIPLE SLIDER  
AT FAMILY ROOM



OPTIONAL  
FIREPLACE



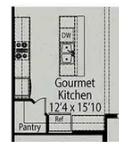
OPTIONAL BEDROOM 4



OPTIONAL  
SPA SHOWER



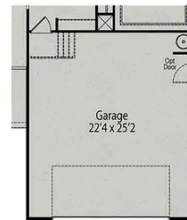
OPTIONAL  
DELUXE  
OWNER'S BATH



OPTIONAL  
GOURMET KITCHEN



OPTIONAL EXTENDED  
OWNER'S SUITE



OPTIONAL 4' GARAGE  
EXTENSION

## PLAN OPTIONS

# The Magnolia A

## Exterior Options

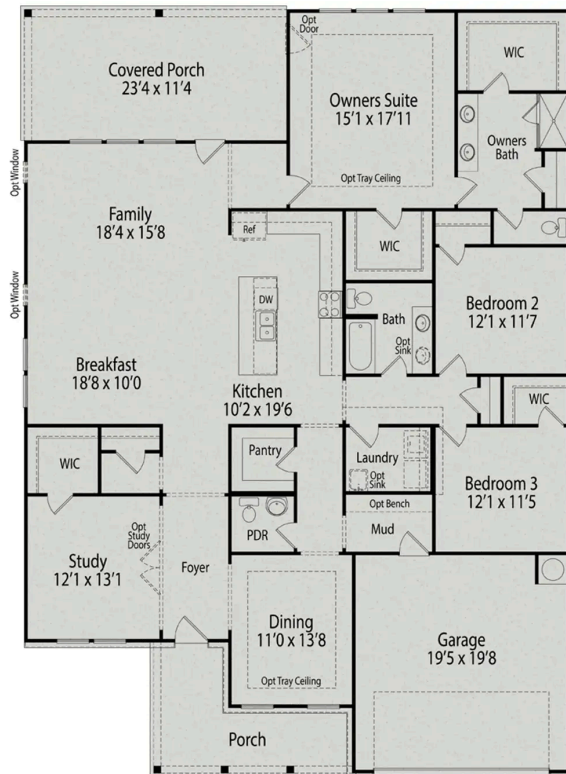


**BEDS**  
**3**

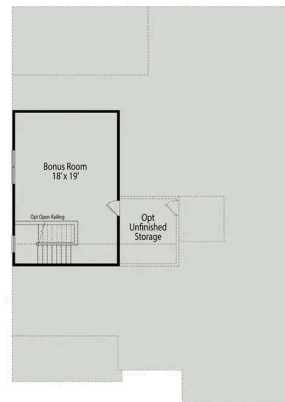
**BATHS**  
**2.5**

**SQ FT**  
**2,524**

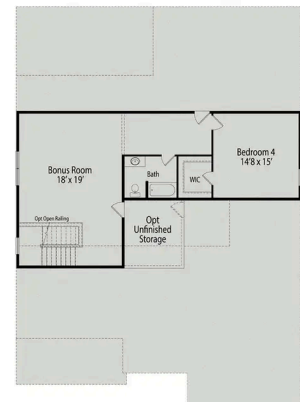
**PARKING**  
**2**



**MAIN FLOOR PLAN**



**OPTIONAL BONUS ROOM**



**OPTIONAL BONUS ROOM WITH BEDROOM 4**

**BONUS ROOM OPTIONS**



# The Magnolia A

With The Magnolia floor plan, you'll find an expansive, open-concept ranch design showcasing modern features and finishes. The formal dining room offers space to entertain and is connected to the kitchen through a convenient side hallway. In the owners suite, there's plenty of storage space with two closets. A spacious covered back porch, perfect for unwinding at the end of the day.

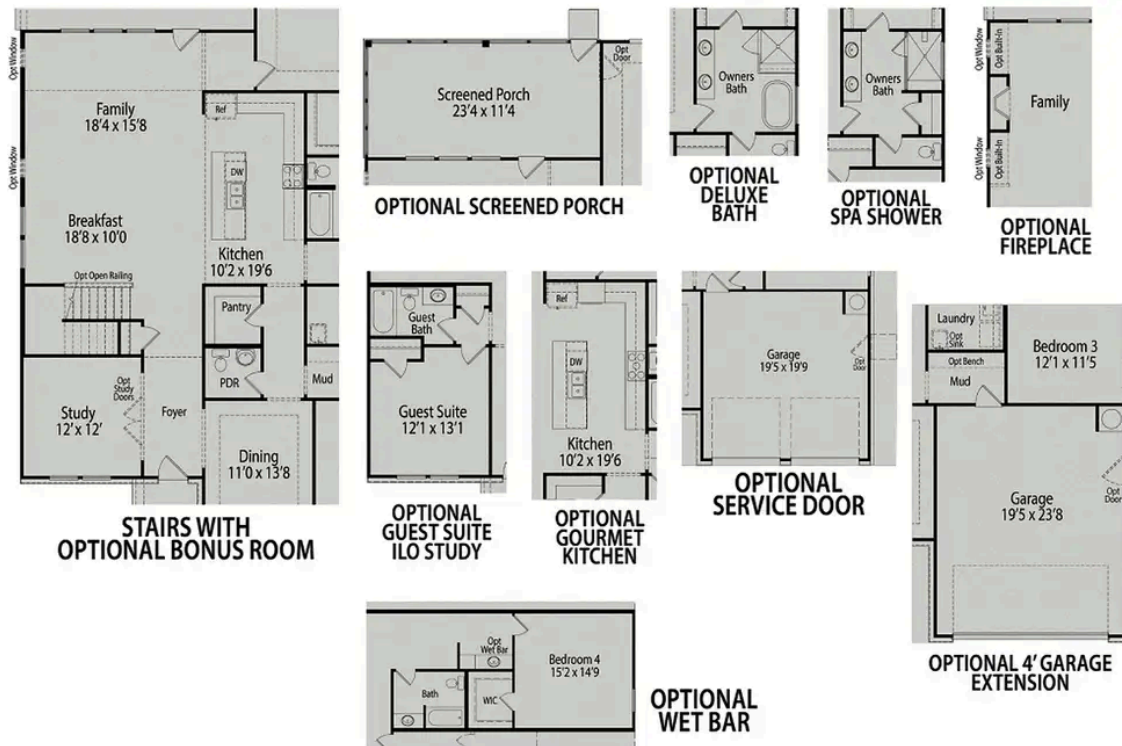
Make it your own with The Magnolia's flexible floor plan! Offerings vary by location, so please discuss your options with our New Home Consultant.

BEDS  
**3**

BATHS  
**2.5**

SQ FT  
**2,524**

GARAGE  
**2**



PLAN OPTIONS