

# Windgate

Davidson Homes in Mooresville, NC

Welcome to Windgate, our latest community located outside of Charlotte, NC. Enjoy the convenience of the Queen City only

## Utilities

Electric: Duke Power

Water: Town of Mooresville



## Community Address

164 Shinnville Road

## Floor Plans

03

## Homes from the

\$450s

Copyright 2024 Davidson Homes, Inc. | All Rights Reserved | Davidson Homes is a leading builder of quality new homes across the Southeast. Davidson Homes reserves the right to adjust items listed without prior notice or obligation. Such items may include, but are not limited to, options, included features and community information, pricing, amenities, square footage, terms or availability. Features, options, floor plans, elevations, colors, dimensions and photographs are for illustration purposes and may vary from homes built. Please see your community specialist for details. Equal housing lender. Last Updated 05/19/2024.



# The Ash



## Description

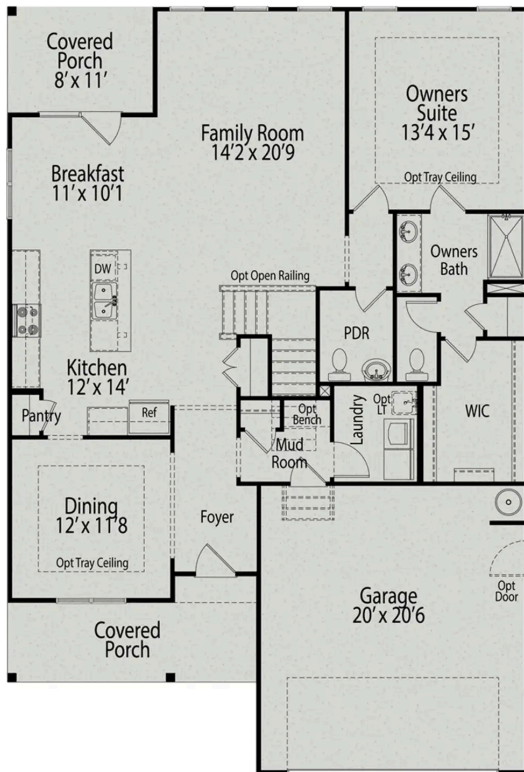
Inside The Ash's handsome exterior lies a coveted, open floor plan. The Foyer welcomes guests past an elegant Dining Room and into a stunning Family Room. The rear Porch offers a calm respite, and the first floor Owner's Suite highlights a massive walk-in closet.

**BEDS**  
**3**

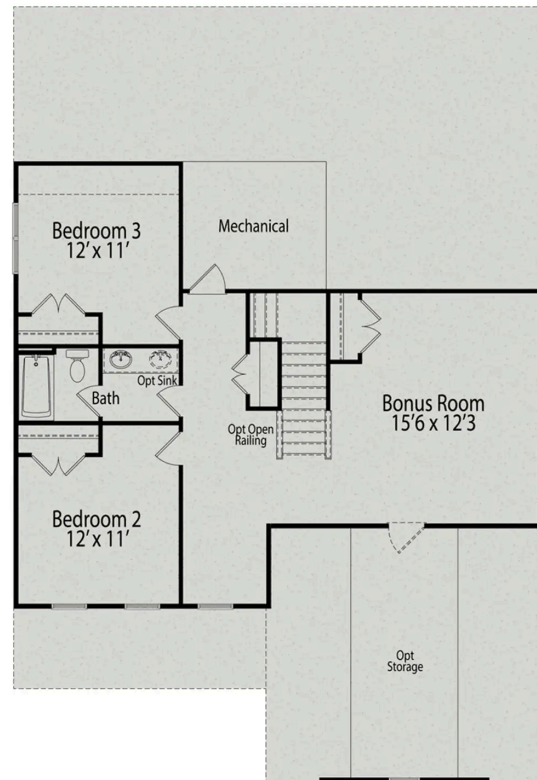
**BATHS**  
**2.5**

**SQ FT**  
**2,401**

**PARKING**  
**2**



**MAIN FLOOR PLAN**



**UPPER FLOOR PLAN**

## The Ash

Inside The Ash's handsome exterior lies a coveted, open floor plan. The Foyer welcomes guests past an elegant Dining Room and into a stunning Family Room. The rear Porch offers a calm respite, and the first floor Owner's Suite highlights a massive walk-in closet. On the second floor, the plan offers two additional bedrooms and a generous Bonus Room – perfect for game nights.

Make it your own with The Ash's flexible floor plan, showcasing an optional fireplace, a fourth bedroom option and more! Offerings vary by location, so please discuss your options with your community's agent.

BEDS  
**3**

BATHS  
**2.5**

SQ FT  
**2,401**

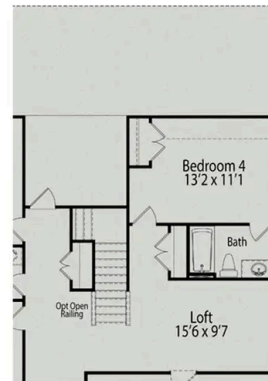
GARAGE  
**2**



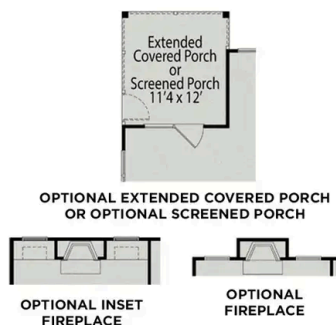
OPTIONAL SPA SHOWER



OPTIONAL GOURMET KITCHEN



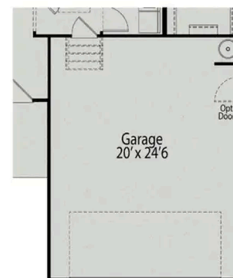
OPTIONAL BEDROOM 4 WITH BATH



OPTIONAL EXTENDED COVERED PORCH  
OR OPTIONAL SCREENED PORCH

OPTIONAL INSET  
FIREPLACE

OPTIONAL  
FIREPLACE



OPTIONAL 4' GARAGE  
EXTENSION

### PLAN OPTIONS



## Windgate in Mooresville, NC

**Call (980) 332-2885**  
DAVIDSONHOMES.COM

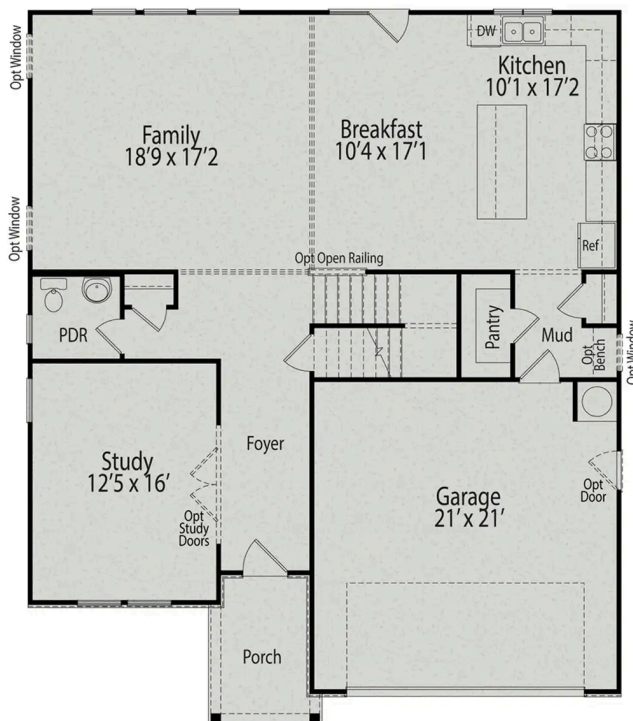
# The Hickory



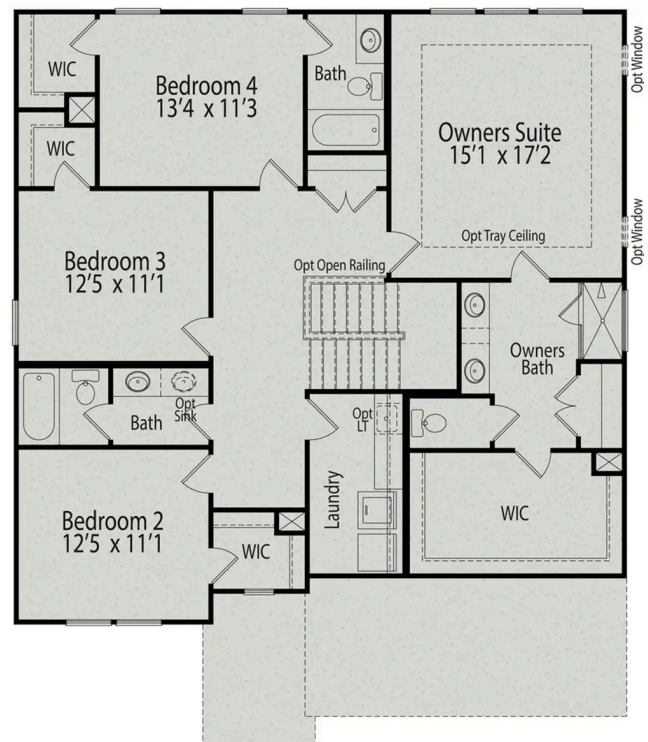
## Description

The Hickory's windows fill the open floor plan with natural light, welcoming you into this charming home. The Kitchen showcases ample counterspace, overlooking the Breakfast and Family Room.

BEDS	BATHS	SQ FT	PARKING
4	3.5	2,735	2



## MAIN FLOOR PLAN



## UPPER FLOOR PLAN





# The Hickory

The Hickory's windows fill the open floor plan with natural light, welcoming you into this charming home. The Kitchen showcases ample counterspace, overlooking the Breakfast and Family Room. A large Study on the first floor offers potential, and the home's second floor features four bedrooms, each with plenty of closet space. The Owner's Suite is separate from the other bedrooms for added privacy, and the fourth bedroom features its own private bath.

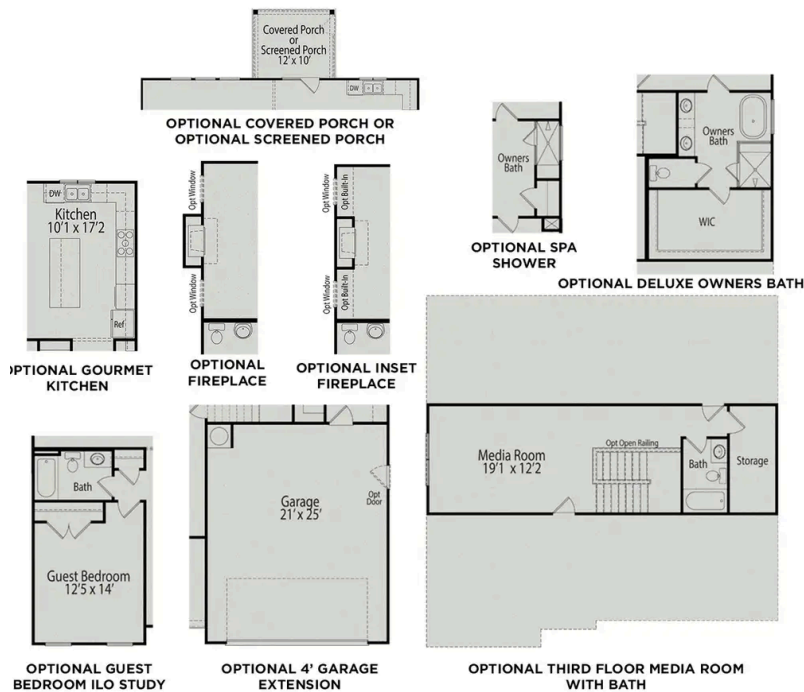
Make it your own with The Hickory's flexible floor plan, showcasing an optional gourmet kitchen, a fifth bedroom and more! Offerings vary by location, so please discuss your options with your community's agent.

BEDS  
**4**

BATHS  
**3.5**

SQ FT  
**2,735**

GARAGE  
**2**



## PLAN OPTIONS

# The Magnolia A



## Description

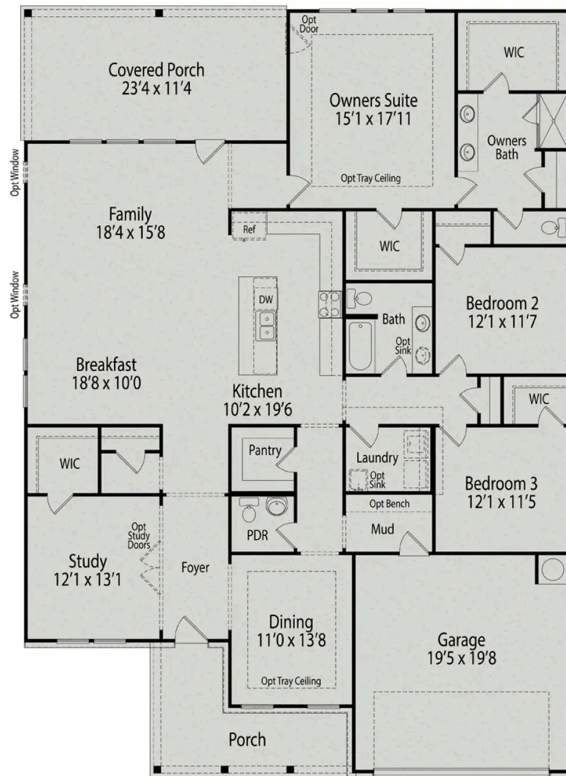
With The Magnolia floor plan, you'll find an expansive, open-concept ranch design showcasing modern features and finishes. The formal dining room offers space to entertain and is connected to the kitchen through a convenient side hallway. In the owners suite, there's plenty of storage space with two closets.

**BEDS**  
**3**

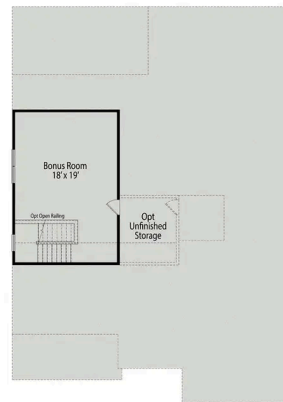
**BATHS**  
**2.5**

**SQ FT**  
**2,524**

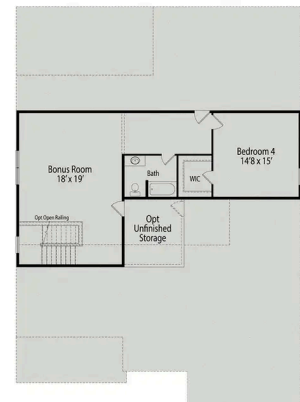
**PARKING**  
**2**



**MAIN FLOOR PLAN**



**OPTIONAL BONUS ROOM**



**OPTIONAL BONUS ROOM WITH BEDROOM 4**

**BONUS ROOM OPTIONS**

# The Magnolia A

With The Magnolia floor plan, you'll find an expansive, open-concept ranch design showcasing modern features and finishes. The formal dining room offers space to entertain and is connected to the kitchen through a convenient side hallway. In the owners suite, there's plenty of storage space with two closets. A spacious covered back porch, perfect for unwinding at the end of the day.

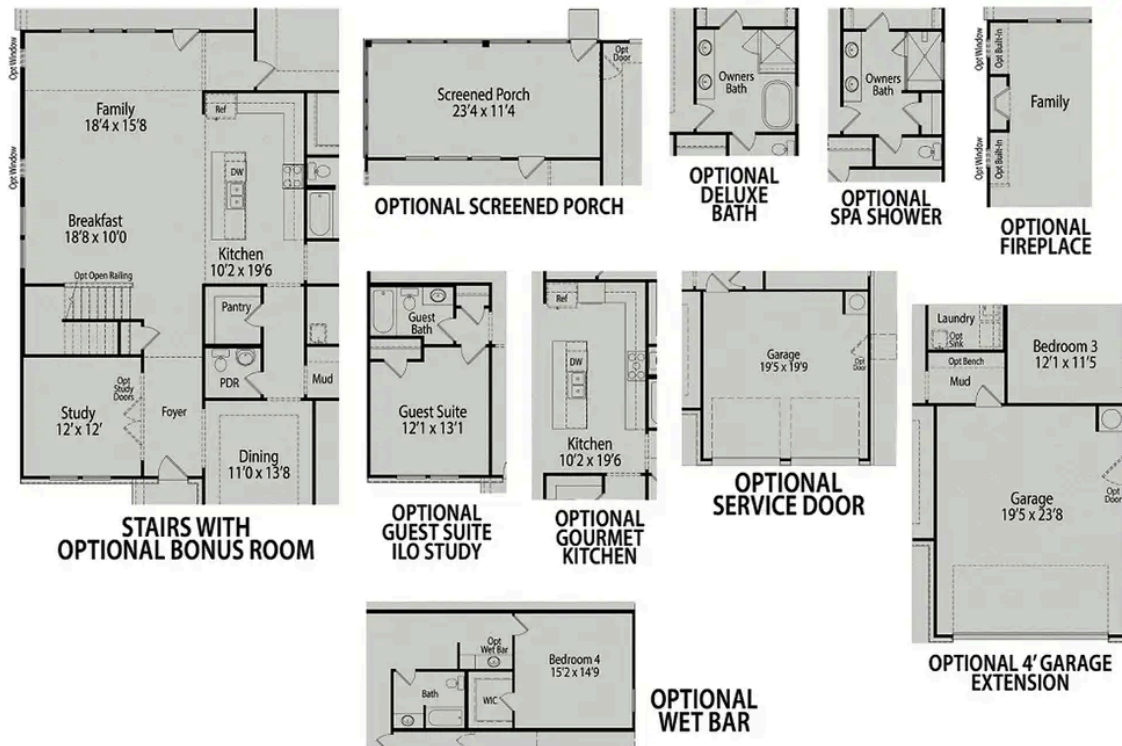
Make it your own with The Magnolia's flexible floor plan! Offerings vary by location, so please discuss your options with our New Home Consultant.

BEDS  
**3**

BATHS  
**2.5**

SQ FT  
**2,524**

GARAGE  
**2**



## PLAN OPTIONS