

# Horizon Pointe

Davidson Homes in San Antonio, TX

Experience living in the heart of San Antonio with Davidson Homes' exciting new coming soon community – Horizon Pointe. This future sanctuary is the ideal place to lay down roots, offering beautiful homes and an exceptional range of amenities designed for a fulfilling lifestyle.

## Features

Pool  
Clubhouse  
Walking Paths

## Local Schools

Masters Elementary  
Metzger Middle  
Wagner High  
Judson ISD

## Utilities

Electric: CPS  
Water: SAWS



Community Address

2801 Paria Canyon

Floor Plans

04

Homes from the

\$290s

Copyright 2024 Davidson Homes, Inc. | All Rights Reserved | Davidson Homes is a leading builder of quality new homes across the Southeast. Davidson Homes reserves the right to adjust items listed without prior notice or obligation. Such items may include, but are not limited to, options, included features and community information, pricing, amenities, square footage, terms or availability. Features, options, floor plans, elevations, colors, dimensions and photographs are for illustration purposes and may vary from homes built. Please see your community specialist for details. Equal housing lender. Last Updated 05/19/2024.





Horizon Pointe in San Antonio, TX

# Community Homesite Map

Call (210) 963-5894



## HORIZON POINTE

San Antonio, Texas



# The Asheville E



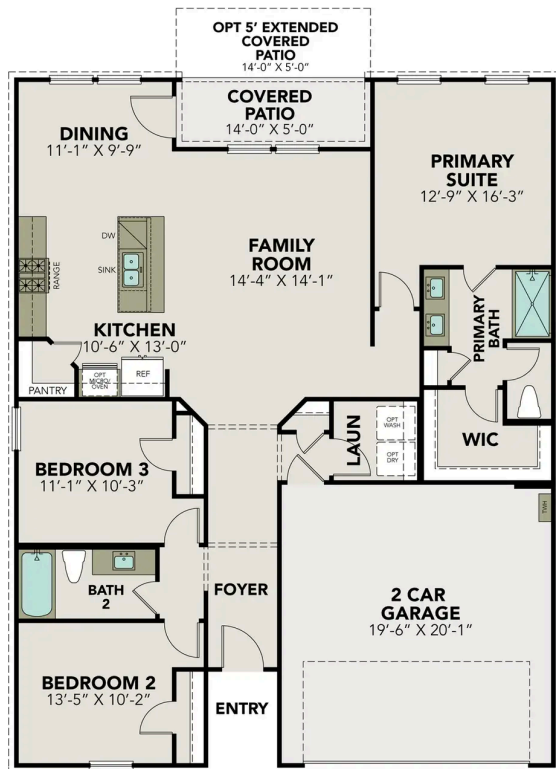
**BEDS**  
**3**

**BATHS**  
**2**

**SQ FT**  
**1,428**

**PARKING**  
**2**

## Exterior Options



**MAIN FLOOR PLAN**



**OPT EXTENDED  
COVERED  
PATIO**

**OPTIONS**



# The Daphne E



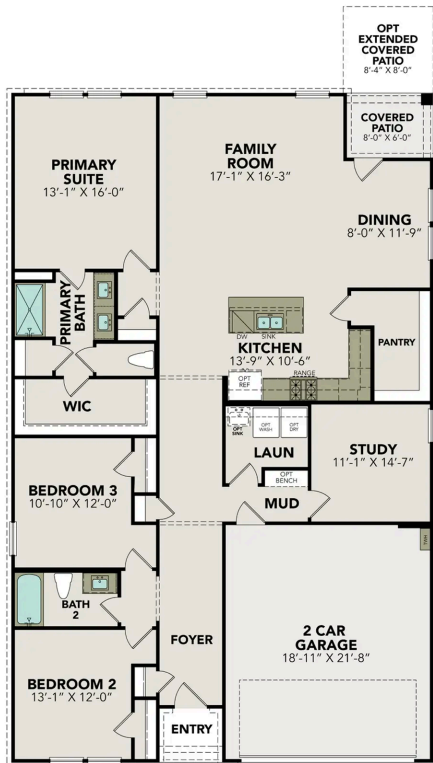
**BEDS**  
**3**

**BATHS**  
**2**

**SQ FT**  
**1,917**

**PARKING**  
**2**

## Exterior Options



**MAIN FLOOR PLAN**



**OPTIONS**



**OPT EXTENDED  
COVERED  
PATIO**



# The Murray F

## Exterior Options

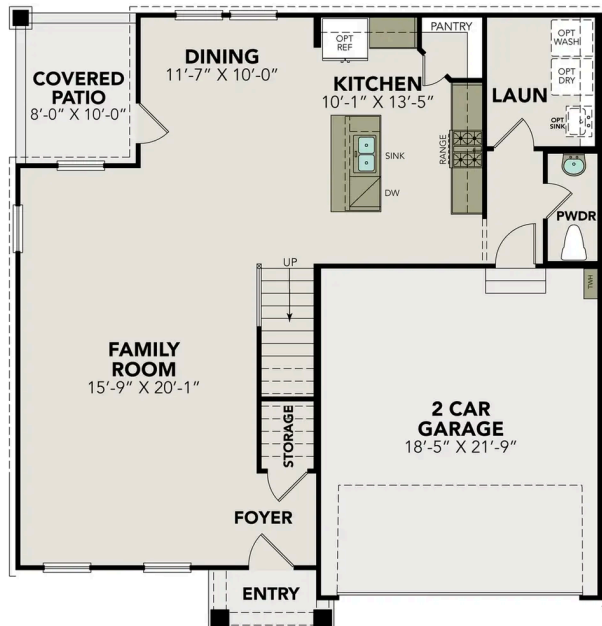


**BEDS**  
**4**

**BATHS**  
**2.5**

**SQ FT**  
**2,397**

**PARKING**  
**2**



**MAIN FLOOR PLAN**



**UPPER FLOOR PLAN**

## The Murray F

The Murray is a spacious two-story home that boasts an open-concept floor plan perfect for modern living. The main floor features a welcoming foyer that leads to a sprawling family room, which is bathed in natural light thanks to its large windows. The family room seamlessly flows into the dining area and kitchen, creating a perfect space for entertaining guests or spending quality time with loved ones. The second floor of The Murray is dedicated to rest and relaxation, featuring a spacious versatile game room, primary suite and three additional bedrooms.

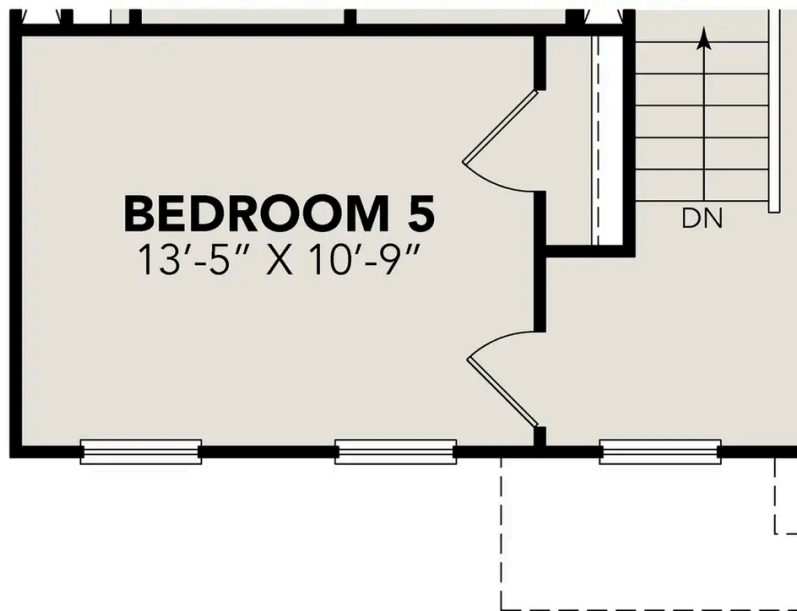
Make it your own with The Murray's flexible floor plan. Just know that offerings vary by location, so please discuss our standard features and upgrade options... with your community's agent.

BEDS  
**4**

BATHS  
**2.5**

SQ FT  
**2,397**

GARAGE  
**2**



### OPT BEDROOM 5 OPTIONS

# The Douglas A

## Exterior Options

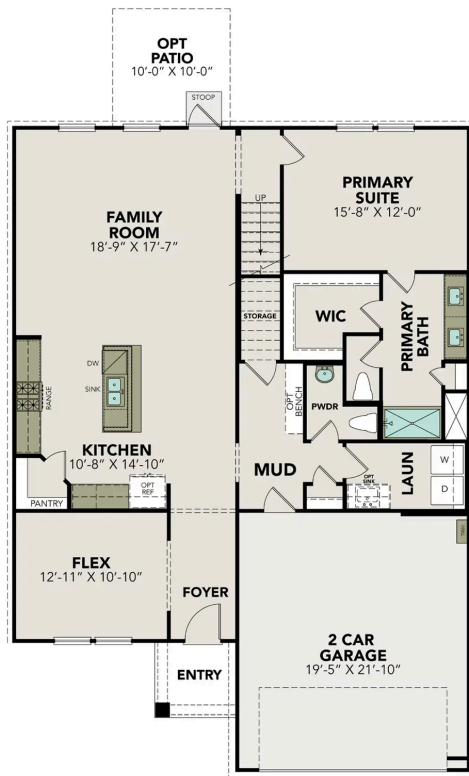


**BEDS**  
**3**

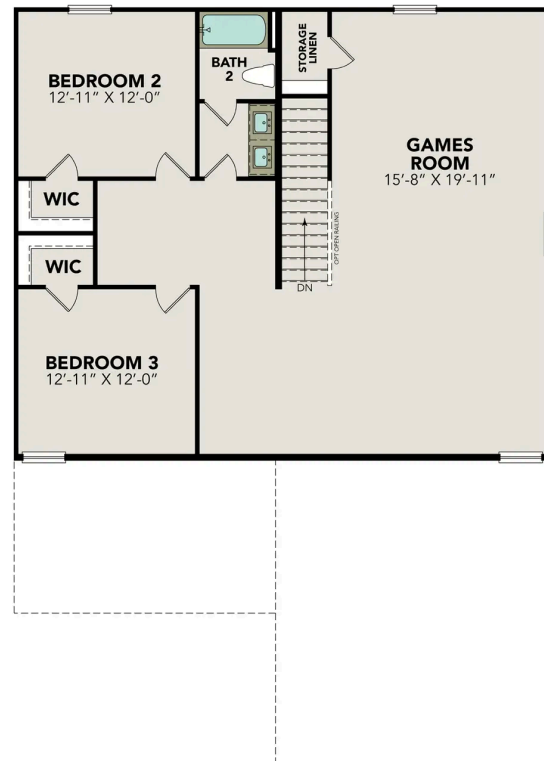
**BATHS**  
**2.5**

**SQ FT**  
**2,738**

**PARKING**  
**2**



**MAIN FLOOR PLAN**



**UPPER FLOOR PLAN**



## The Douglas A

Welcome to The Douglas! Behind this charming two-story exterior lies three bedrooms and plenty of space. The main floor features the primary suite, while the family room leads to the optional patio. Upstairs you'll find two additional bedrooms and a game room, perfect for multi-generational families!

Make it your own with The Douglas' flexible floor plan, featuring the optional guest retreat. Just know that offerings vary by location, so please discuss our standard features and upgrade options with your community's agent.

BEDS  
**3**

BATHS  
**2.5**

SQ FT  
**2,738**

GARAGE  
**2**



### OPT GUEST RETREAT OPTIONS