

Collins Lane

Davidson Homes in Meridianville, AL

Now Selling - Davidson Homes is proud to present Collins Lane, our newest community in Meridianville, AL. Here, we're unveiling a fresh line of floor plans tailored for today's homeowners.

Location is key! Collins Lane is situated within a top-rated school district, ensuring excellent educational opportunities for residents. Convenience is also a hallmark of this community. Golf enthusiasts can enjoy the nearby Colonial Golf Course, while daily shopping needs are met with a Publix just around the corner.

Features

Great Public Schools
100% Financing Available
Nearby Outdoor Activities

Local Schools

Madison County School Di...
Lynn Fanning Elementary
Meridianville Middle
Hazel Green High

Utilities

Electric: Huntsville Utilities
Water: Madison County W...



Community Address

104 Fuller Drive

New Homes

03

Floor Plans

04

Homes from the

\$240s

Copyright 2024 Davidson Homes, Inc. | All Rights Reserved | Davidson Homes is a leading builder of quality new homes across the Southeast. Davidson Homes reserves the right to adjust items listed without prior notice or obligation. Such items may include, but are not limited to, options, included features and community information, pricing, amenities, square footage, terms or availability. Features, options, floor plans, elevations, colors, dimensions and photographs are for illustration purposes and may vary from homes built. Please see your community specialist for details. Equal housing lender. Last Updated 05/19/2024.





Collins Lane in Meridianville, AL

Quick Move-In Homes

Lou Montoya
Call (256) 484-8875



UPDATED
05/19/2024

HOMES
03

COMMUNITY ADDRESS
104 Fuller Drive



\$274,925

4 Beds 2 Baths 1,964 Sq Ft

106 Collins Lane | #1

The Daphne V Plan



\$259,925

3 Beds 2 Baths 1,620 Sq Ft

110 Collins Lane | #2

The Franklin V Plan



\$249,925

3 Beds 2 Baths 1,484 Sq Ft

110-A Collins Lane | #3

The Asheville V Plan





Collins Lane in Meridianville, AL

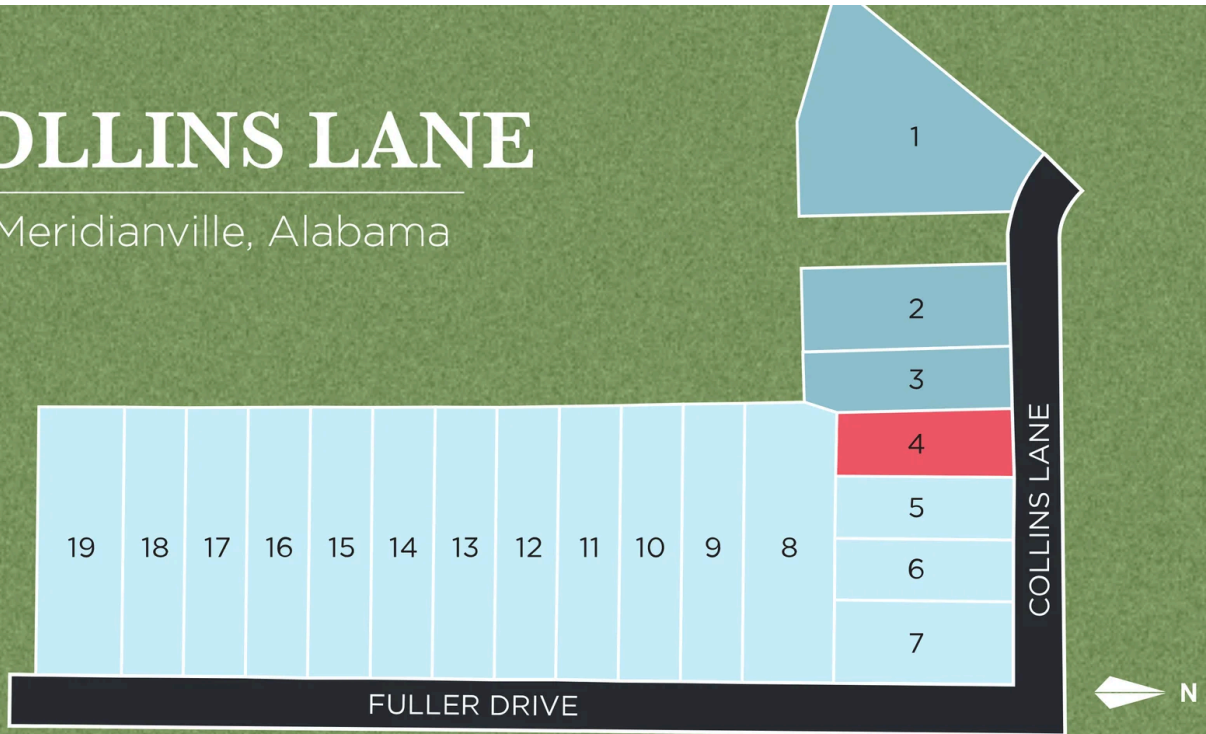
Community Homesite Map

Lou Montoya
Call (256) 484-8875



COLLINS LANE

Meridianville, Alabama

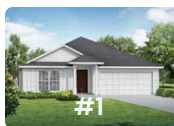


QUICK MOVE-IN

COMING SOON

SOLD

Featured Homes for Sale



The Daphne V
106 Collins Lane
\$274,925



The Franklin V
110 Collins Lane
\$259,925



The Asheville V
110-A Collins Lane
\$249,925





Collins Lane in Meridianville, AL

Call (256) 484-8875
DAVIDSONHOMES.COM

The Butler V



Description

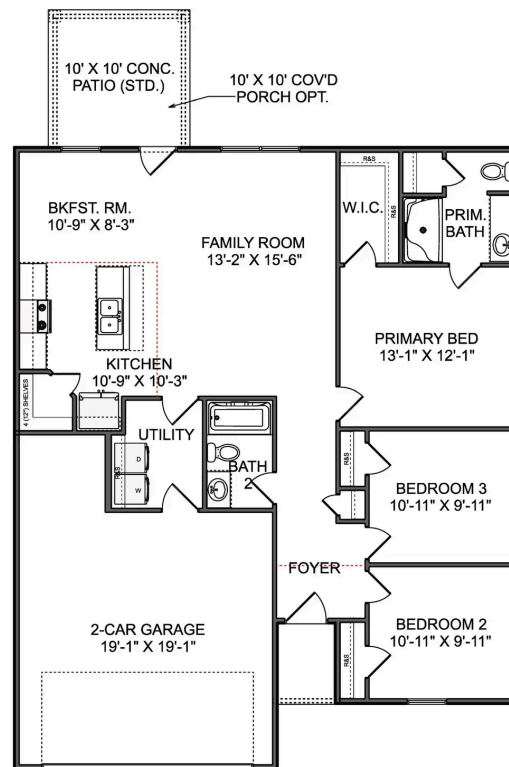
"The Butler" is a gracefully designed 1,299 square foot floor plan, blending comfort with efficiency. Its open floor plan unites the living, dining, and kitchen areas, creating an inviting space ideal for family life and entertaining.

BEDS
3

BATHS
2

SQ FT
1,299

PARKING
2



THE BUTLER V MAIN FLOOR





Collins Lane in Meridianville, AL

Call (256) 484-8875
DAVIDSONHOMES.COM

The Asheville V



Description

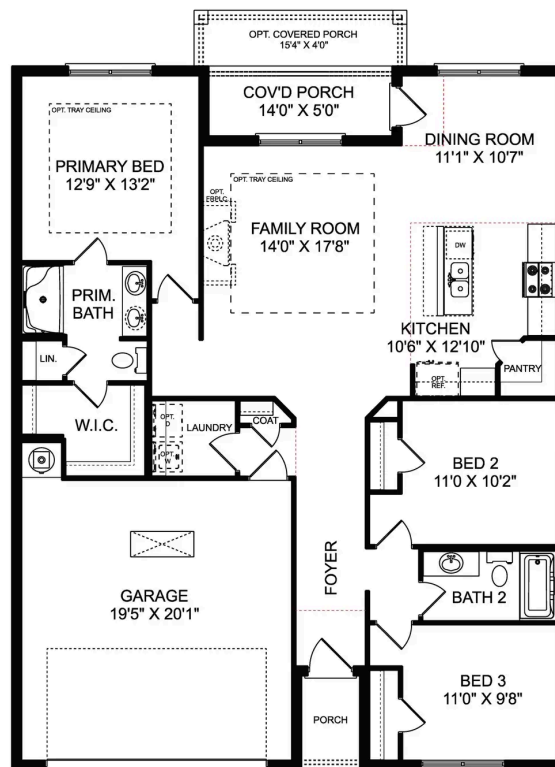
Discover the charm of one-level living with this open-concept home! From The Asheville's large, kitchen island overlooking the family room to its isolated Master Bedroom, we've designed this home with you in mind. The three bedrooms offer plenty of space for you and your guests.

BEDS
3

BATHS
2

SQ FT
1,484

PARKING
2



THE ASHEVILLE V



The Franklin V



Description

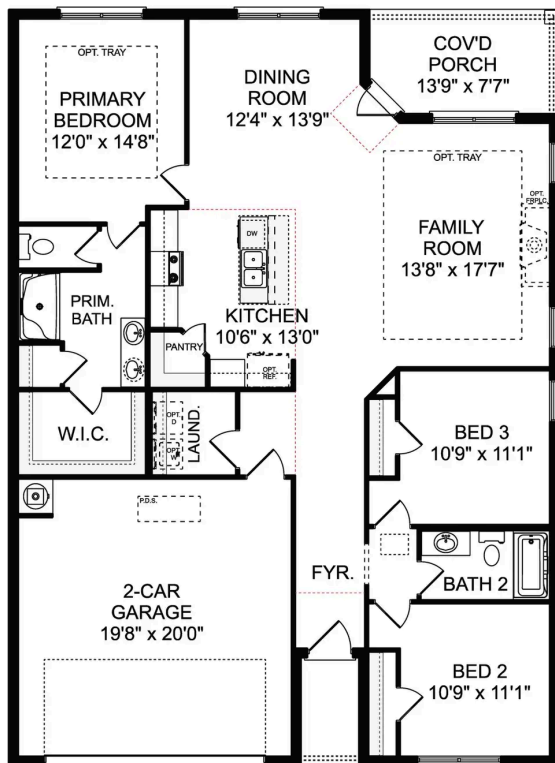
Within this cozy, one-level home lies a modern use of space. From the kitchen's large island to the family room's spacious open-concept, you're surrounded by owner-centric design.

BEDS
3

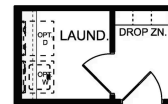
BATHS
2

SQ FT
1,620

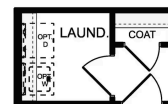
PARKING
2



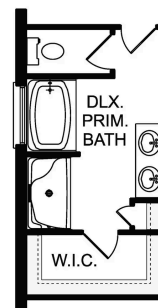
THE FRANKLIN V



OPT. DROP ZONE



OPT. COAT CLOSET



OPT. DELUXE PRIMARY BATH

THE FRANKLIN V OPTIONS

The Daphne V



Description

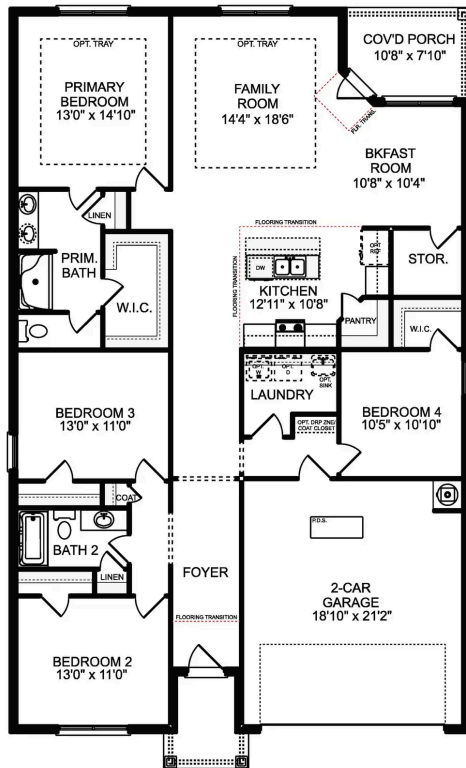
Show off your style with the Daphne's open-concept floor plan! Featuring tons of natural light, the family room is perfect for entertaining, and the home's kitchen features an adorable breakfast nook. The Master Suite offers plenty of space, and its walk-in closet has room to spare.

BEDS
4

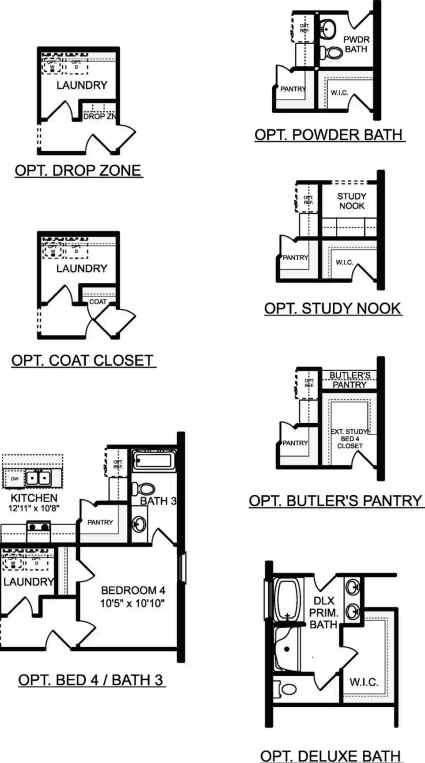
BATHS
2

SQ FT
1,964

PARKING
2



THE DAPHNE V



THE DAPHNE V OPTIONS