

# Spragins Cove

Davidson Homes in Huntsville, AL

Now Selling! Welcome to Spragins Cove, the vibrant new community by Davidson Homes in North Huntsville! Spragins Cove offers a truly exceptional living experience in a picturesque setting, with convenient access to Memorial Parkway for easy commuting and daily convenience.

## Features

Nearby Parks & Recreation

## Local Schools

Huntsville City Schools  
Rolling Hills Elementary  
Ronald E. McNair Junior Hi...  
Jemison High

## Utilities

Electric: Huntsville Utilities  
Water: Huntsville Utilities



Community Address

Spragins Hollow Rd. NW

New Homes

04

Floor Plans

07

Homes from the

\$260s

Copyright 2024 Davidson Homes, Inc. | All Rights Reserved | Davidson Homes is a leading builder of quality new homes across the Southeast. Davidson Homes reserves the right to adjust items listed without prior notice or obligation. Such items may include, but are not limited to, options, included features and community information, pricing, amenities, square footage, terms or availability. Features, options, floor plans, elevations, colors, dimensions and photographs are for illustration purposes and may vary from homes built. Please see your community specialist for details. Equal housing lender. Last Updated 05/19/2024.





Spragins Cove in Huntsville, AL

# Quick Move-In Homes

Terrence Harris  
Call (256) 669-3525



LIMITED TIME

Save **25%** on  
Design Upgrades!

PLUS, ENJOY  
**\$5,000\***  
TO USE AS YOU CHOOSE!

LEARN MORE →

\*See link for terms/conditions.

UPDATED HOMES  
**05/19/2024 04**

COMMUNITY ADDRESS  
**Spragins Hollow Rd. NW**

Coming Soon



**\$287,770**

**3 Beds 2 Baths 1,484 Sq Ft**

6256 Pisgah Drive | #27

The Asheville C Plan

Coming Soon



**\$299,439**

**3 Beds 2 Baths 1,620 Sq Ft**

6254 Pisgah Drive | #26

The Franklin C Plan

Coming Soon



**\$337,976**

**4 Beds 3 Baths 2,136 Sq Ft**

6252 Pisgah Drive | #25

The Everett Plan

Sep '24



**\$314,369**

**4 Beds 2 Baths 1,964 Sq Ft**

6250 Pisgah Drive | #24

The Daphne C Plan

Copyright 2024 Davidson Homes, Inc. | All Rights Reserved | Davidson Homes is a leading builder of quality new homes across the Southeast. Davidson Homes reserves the right to adjust items listed without prior notice or obligation. Such items may include, but are not limited to, options, included features and community information, pricing, amenities, square footage, terms or availability. Features, options, floor plans, elevations, colors, dimensions and photographs are for illustration purposes and may vary from homes built. Please see your community specialist for details. Equal housing lender.







Spragins Cove in Huntsville, AL

## Community Homesite Map

Terrence Harris  
Call (256) 669-3525

### SPRAGINS COVE

Huntsville, Alabama



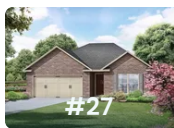
QUICK MOVE-IN

COMING SOON

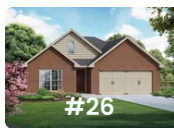
AVAILABLE

SOLD

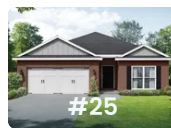
### Featured Homes for Sale



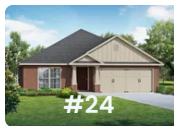
**The Asheville C**  
6256 Pisgah Drive  
**\$287,770**



**The Franklin C**  
6254 Pisgah Drive  
**\$299,439**



**The Everett**  
6252 Pisgah Drive  
**\$337,976**



**The Daphne C**  
6250 Pisgah Drive  
**\$314,369**





Spragins Cove in Huntsville, AL

Call (256) 669-3525  
DAVIDSONHOMES.COM

## The Butler



### Description

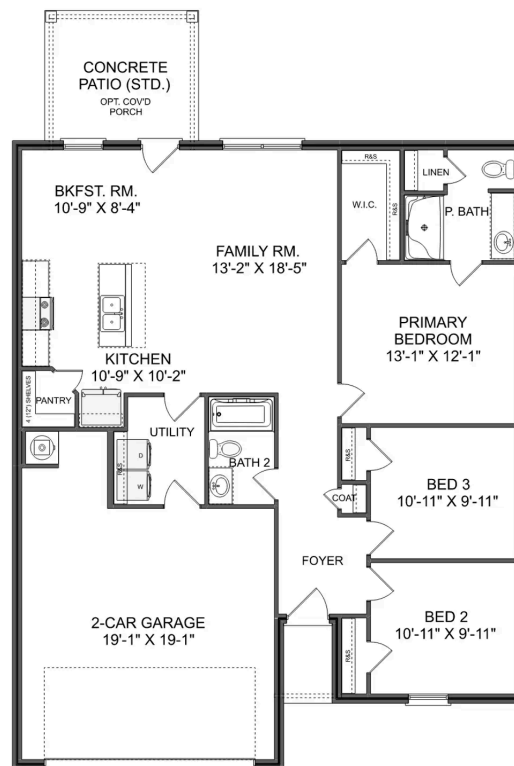
"The Butler" is a gracefully designed 1,299 square foot floor plan, blending comfort with efficiency. Its open floor plan unites the living, dining, and kitchen areas, creating an inviting space ideal for family life and entertaining.

BEDS  
**3**

BATHS  
**2**

SQ FT  
**1,299**

PARKING  
**2**



THE BUTLER A MAIN FLOOR





# The Asheville

## Exterior Options

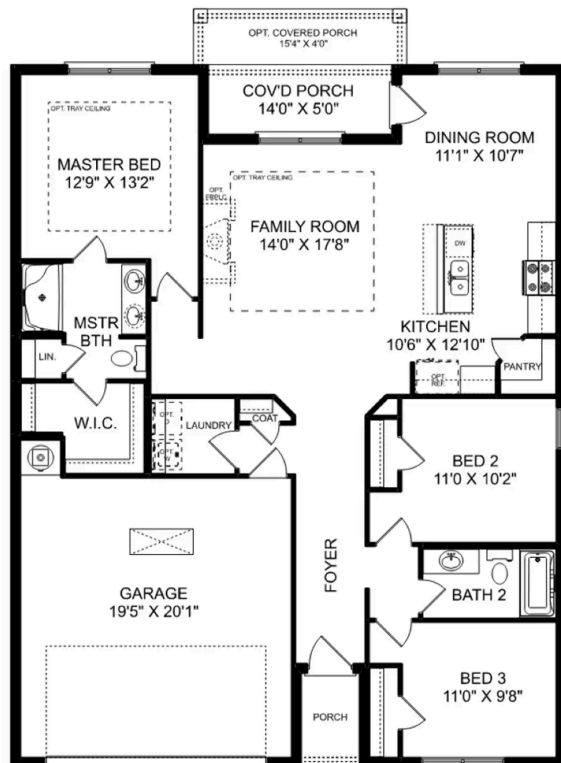


**BEDS**  
**3**

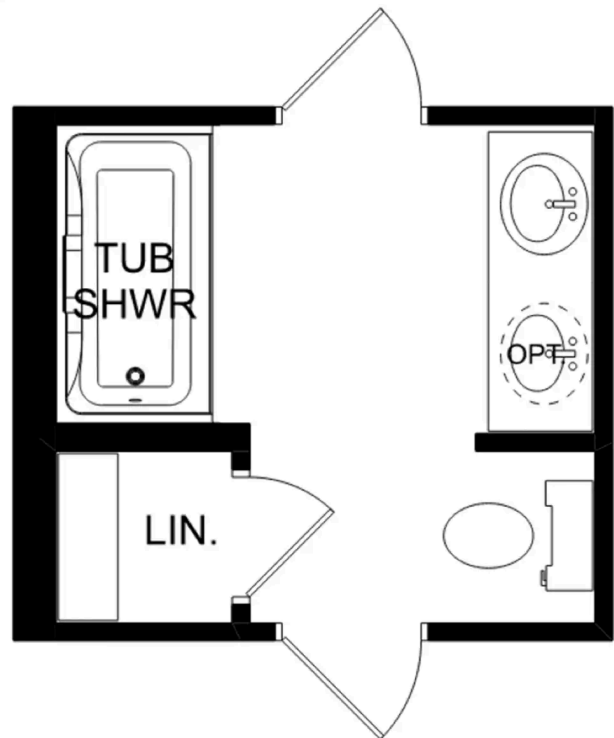
**BATHS**  
**2**

**SQ FT**  
**1,484**

**PARKING**  
**2**



**THE ASHEVILLE**



**THE ASHEVILLE OPTIONS**

# The Franklin

## Exterior Options

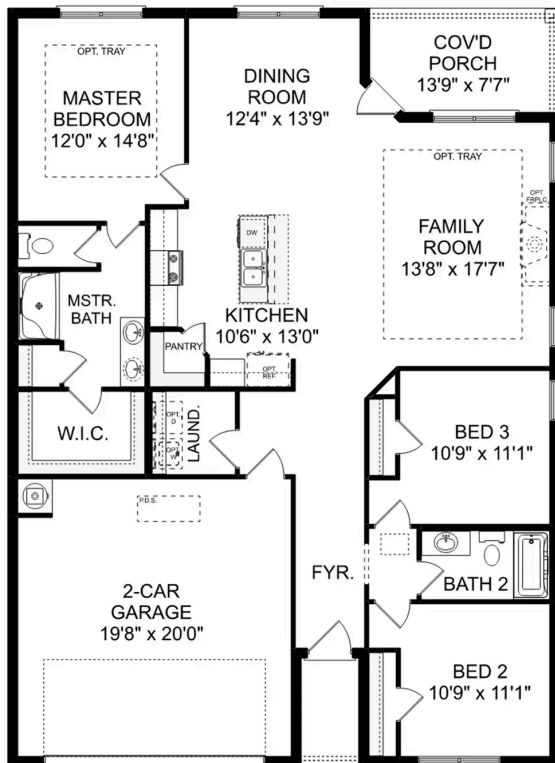


**BEDS**  
**3**

**BATHS**  
**2**

**SQ FT**  
**1,620**

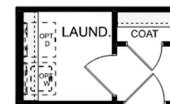
**PARKING**  
**2**



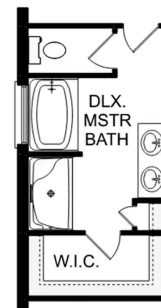
**THE FRANKLIN**



OPT. DROP ZONE



OPT. COAT CLOSET



OPT. DELUXE MASTER BATH

**THE FRANKLIN OPTIONS**



# The Daphne

## Exterior Options

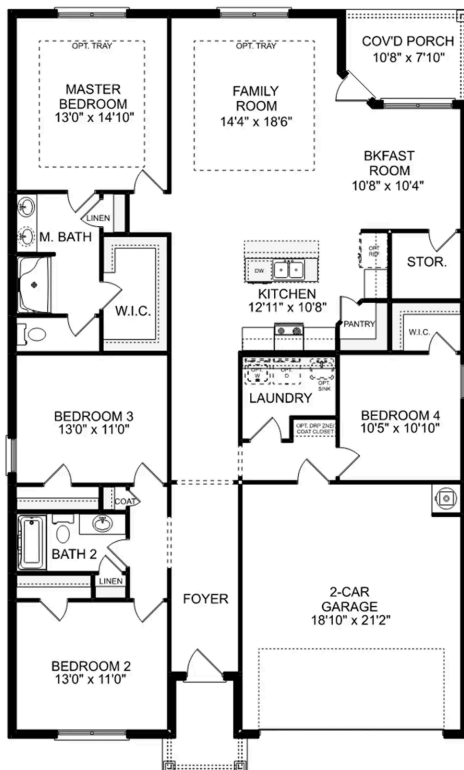


**BEDS**  
**4**

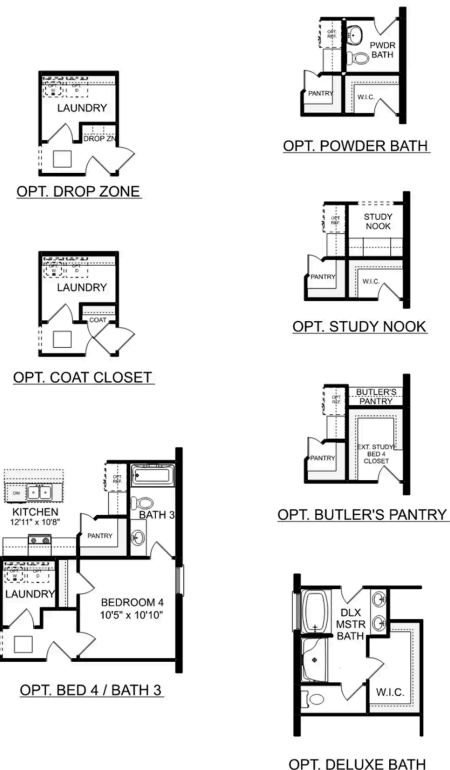
**BATHS**  
**2**

**SQ FT**  
**1,964**

**PARKING**  
**2**



**THE DAPHNE**



**THE DAPHNE OPTIONS**





Spragins Cove in Huntsville, AL

Call (256) 669-3525  
DAVIDSONHOMES.COM

## The Everett

### Exterior Options

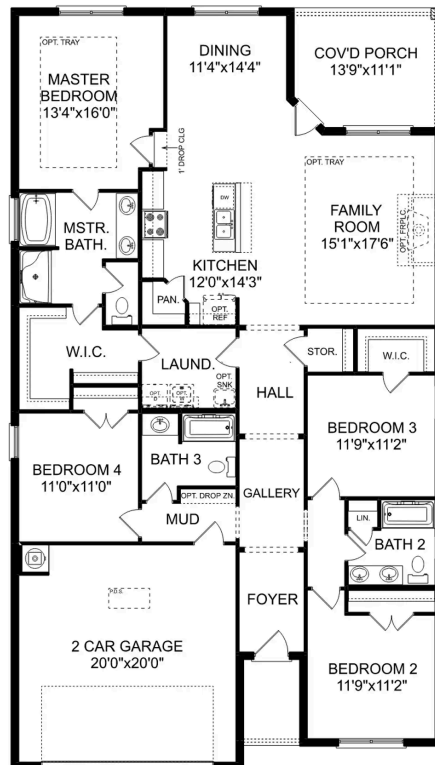


BEDS  
**4**

BATHS  
**3**

SQ FT  
**2,136**

PARKING  
**2**



THE EVERETT



# The Shelby A

## Exterior Options

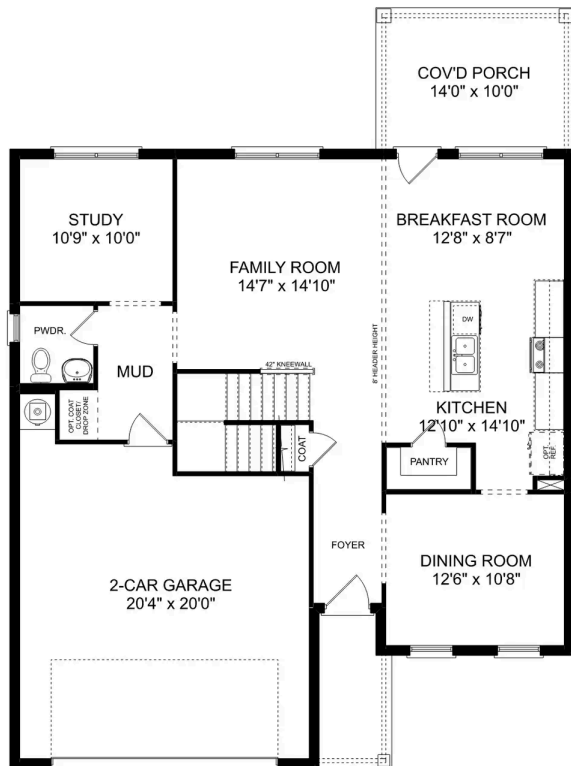


**BEDS**  
**3**

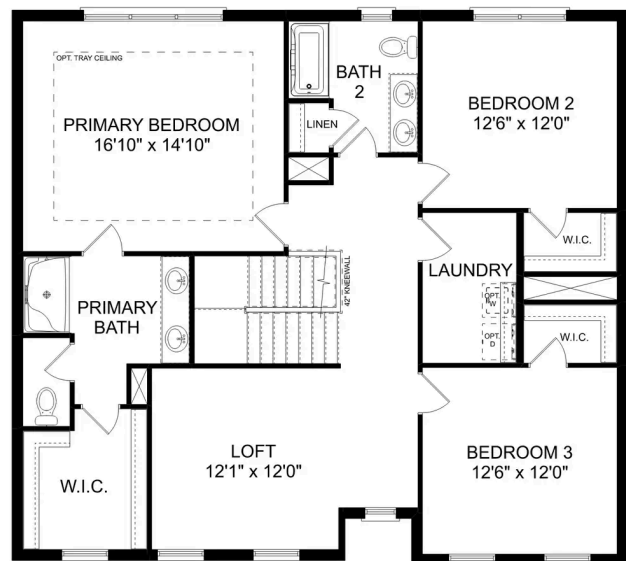
**BATHS**  
**2.5**

**SQ FT**  
**2,452**

**PARKING**  
**2**



**MAIN FLOOR**



**UPPER FLOOR**

## The Shelby A

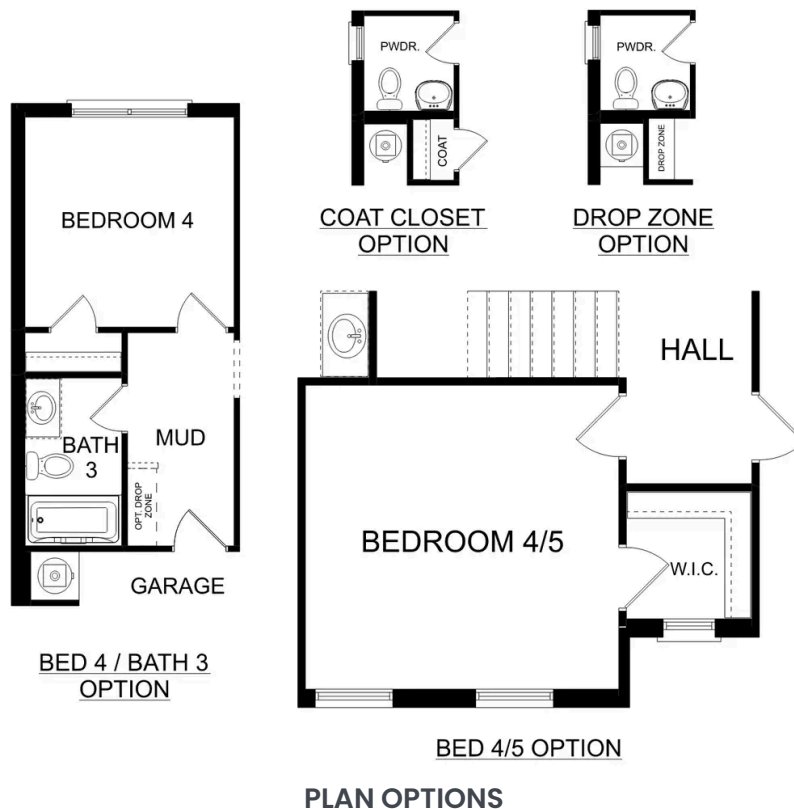
The Shelby welcomes you into a modern, open space, complete with a formal dining room and study. The kitchen overlooks an open-concept family room. The second floor features a spacious master bedroom with a large walk-in closet and master bath along with two additional bedrooms with ample walk-in closets of their own.

BEDS  
**3**

BATHS  
**2.5**

SQ FT  
**2,452**

GARAGE  
**2**





# The Chelsea A

## Exterior Options

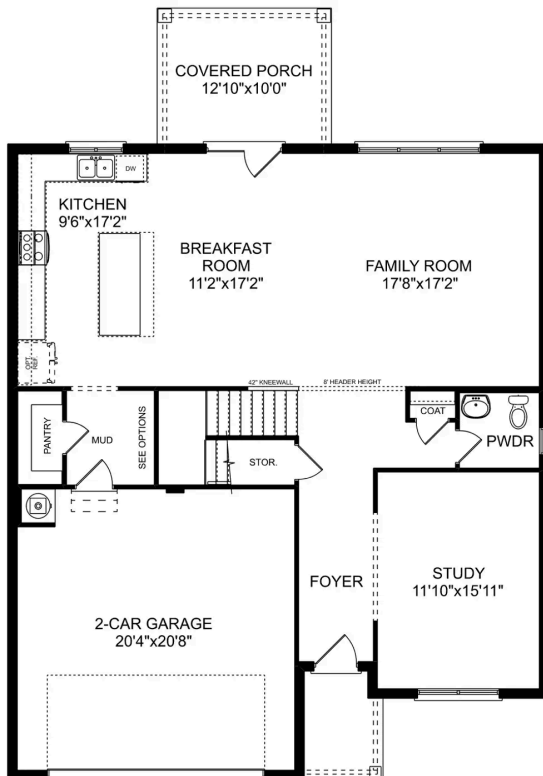


**BEDS**  
**4**

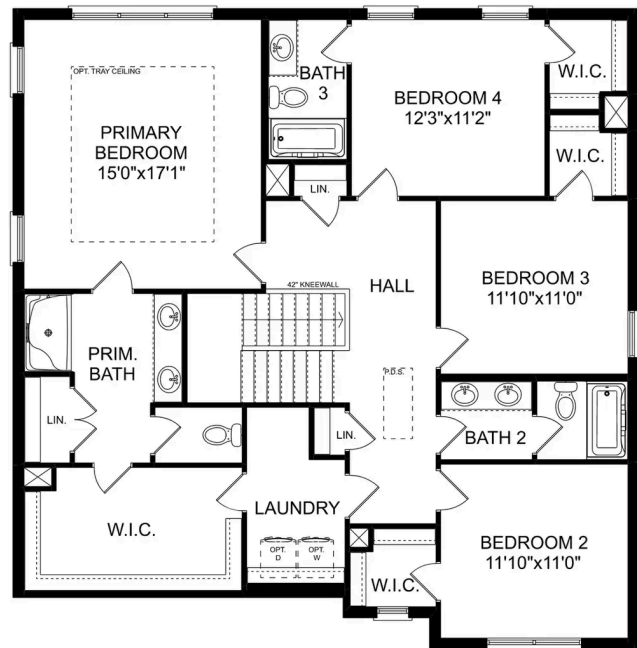
**BATHS**  
**3.5**

**SQ FT**  
**2,769**

**PARKING**  
**2**



**MAIN FLOOR**



**UPPER FLOOR**

## The Chelsea A

The Chelsea's windows fill the open floor plan with natural light, welcoming you into this charming home. The kitchen showcases ample counterspace, overlooking the breakfast and family room. A large study on the first floor offers potential, and the home's second floor features four bedrooms, each with plenty of closet space. The master bedroom is separate from the other bedrooms for added privacy, and the fourth bedroom features its own private bath.

Make it your own with The Chelsea's flexible floor plan. Offerings vary by location, so please discuss your options with your community's agent.

BEDS  
**4**

BATHS  
**3.5**

SQ FT  
**2,769**

GARAGE  
**2**

