

Hollon Meadow

Davidson Homes in Decatur, AL

Welcome to Hollon Meadow, our newest community in Decatur, Alabama. Davidson Homes is thrilled to offer stunning single-family and townhome plans for all our potential homeowners. We have two new floor plans that offer premium finishes, modern amenities, and stainless appliances designed to enhance your everyday living.

Features

Stainless Appliances

Local Schools

Walter Jackson Elementary
Decatur Middle
Decatur High

Utilities

Electric: Joe Wheeler
Gas: Decatur Utilities
Water: Decatur Utilities



Community Address

3162 Lea Ln

New Homes

08

Floor Plans

07

Homes from the

\$250s

Copyright 2024 Davidson Homes, Inc. | All Rights Reserved | Davidson Homes is a leading builder of quality new homes across the Southeast. Davidson Homes reserves the right to adjust items listed without prior notice or obligation. Such items may include, but are not limited to, options, included features and community information, pricing, amenities, square footage, terms or availability. Features, options, floor plans, elevations, colors, dimensions and photographs are for illustration purposes and may vary from homes built. Please see your community specialist for details. Equal housing lender. Last Updated 05/19/2024.





Hollon Meadow in Decatur, AL

Quick Move-In Homes

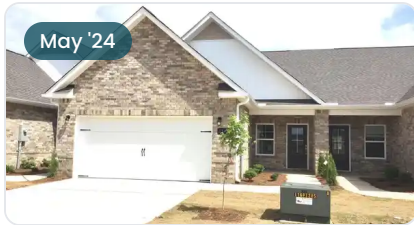
Kevin Holaday
Call (256) 330-6682



UPDATED
05/19/2024

HOMES
08

COMMUNITY ADDRESS
3162 Lea Ln



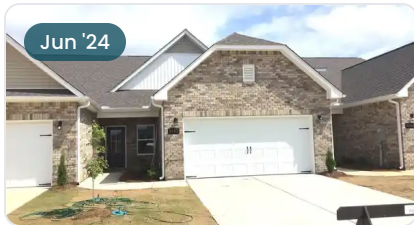
\$254,900
2 Beds 2 Baths 1,444 Sq Ft
3148 Mead Way SE | #82
The Cumberland D Plan



\$294,008
3 Beds 2 Baths 1,620 Sq Ft
3151 Chestnut Court SE | #42
The Franklin Plan



\$269,900
3 Beds 2 Baths 1,462 Sq Ft
3154 Mead Way SE | #79
The Cumberland Plan



\$254,587
2 Beds 2 Baths 1,444 Sq Ft
3152 Mead Way SE | #80
The Cumberland B Plan



\$269,900
3 Beds 2 Baths 1,462 Sq Ft
3146 Mead Way | #83
The Cumberland B Plan



\$279,436
3 Beds 2 Baths 1,484 Sq Ft
3139 Chestnut Court SE | #39
The Asheville Plan



\$274,777
3 Beds 2 Baths 1,484 Sq Ft
3127 Chestnut Court SE | #36
The Asheville Plan



\$307,482
4 Beds 2 Baths 1,964 Sq Ft
3131 Chestnut Court SE | #37
The Daphne Plan

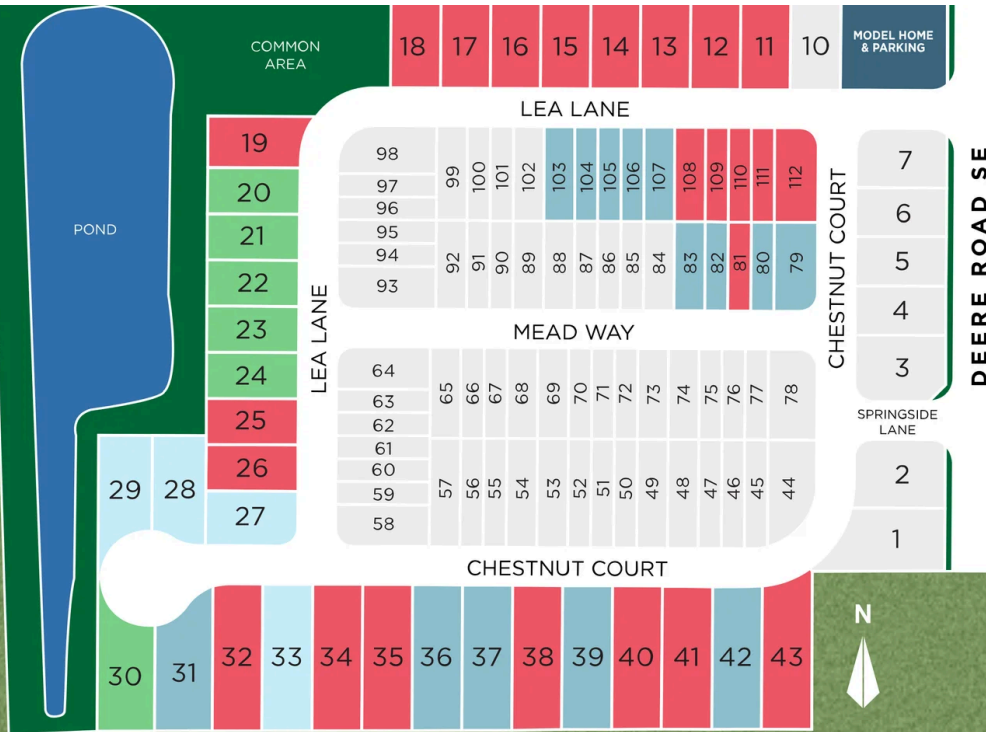




Hollon Meadow in Decatur, AL

Community Homesite Map

Kevin Holaday
Call (256) 330-6682



HOLLON MEADOW

Decatur, Alabama

QUICK MOVE-IN COMING SOON AVAILABLE SOLD

Featured Homes for Sale



The Cumberland D
3148 Mead Way SE
\$254,900



The Franklin
3151 Chestnut Court SE
\$294,008



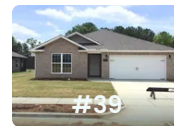
The Cumberland
3154 Mead Way SE
\$269,900



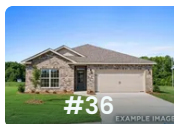
The Cumberland B
3152 Mead Way SE
\$254,587



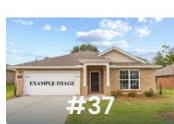
The Cumberland B
3146 Mead Way
\$269,900



The Asheville
3139 Chestnut Court SE
\$279,436



The Asheville
3127 Chestnut Court SE
\$274,777



The Daphne
3131 Chestnut Court SE
\$307,482



The Cumberland

Exterior Options

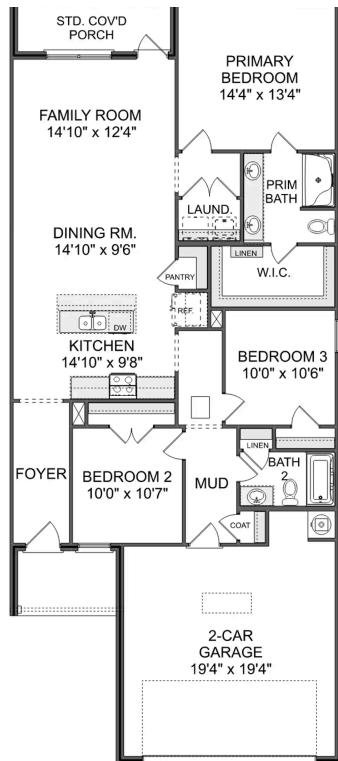


BEDS
2

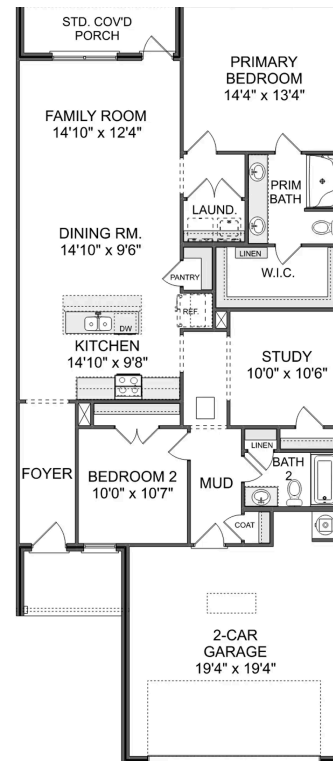
BATHS
2

SQ FT
1,462

PARKING
2



**THE CUMBERLAND A EXTERIOR UNIT MAIN
FLOOR**



**THE CUMBERLAND A INTERIOR UNIT MAIN
FLOOR**

The Asheville

Exterior Options

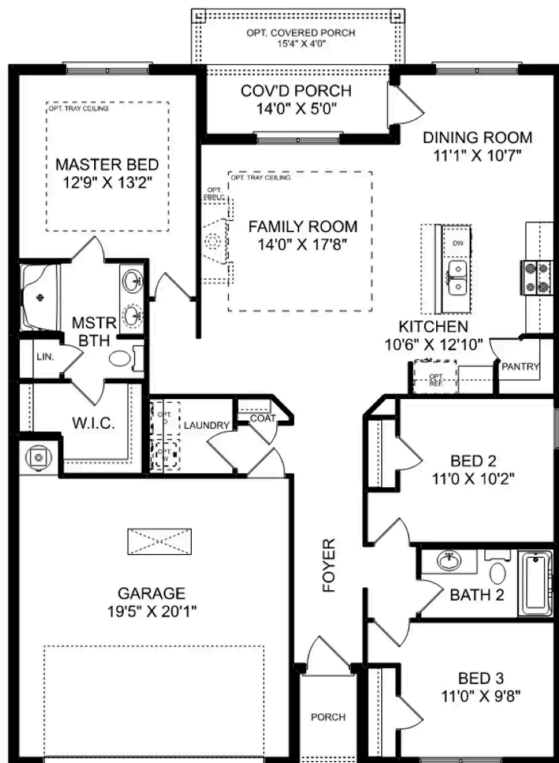


BEDS
3

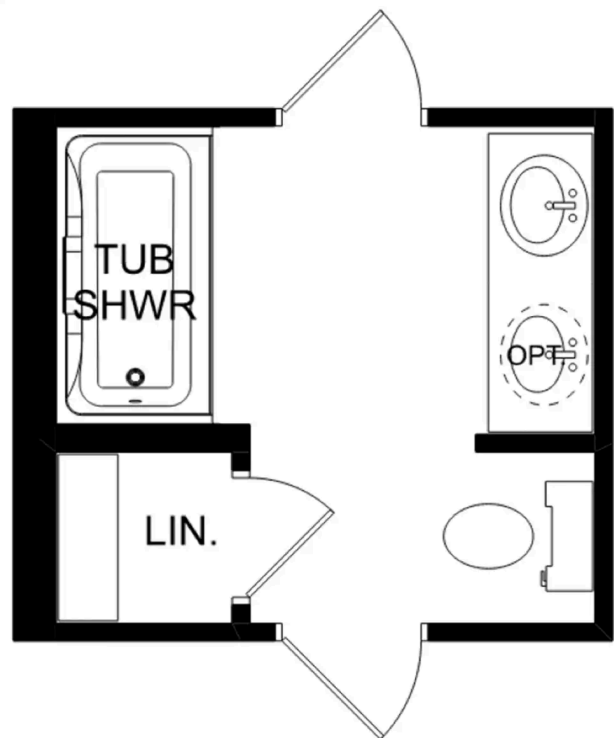
BATHS
2

SQ FT
1,484

PARKING
2



THE ASHEVILLE



THE ASHEVILLE OPTIONS



Hollon Meadow in Decatur, AL

Call (256) 330-6682
DAVIDSONHOMES.COM

The Franklin



Exterior Options

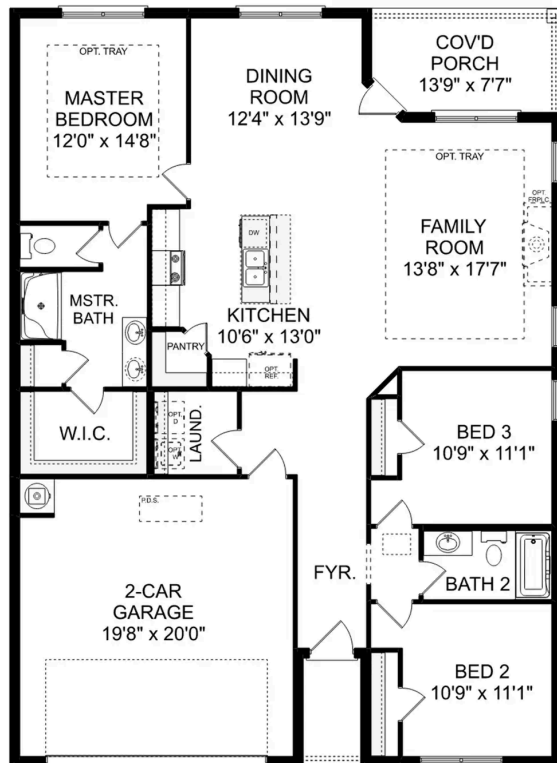


BEDS
3

BATHS
2

SQ FT
1,620

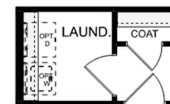
PARKING
2



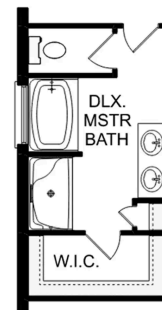
THE FRANKLIN



OPT. DROP ZONE



OPT. COAT CLOSET



OPT. DELUXE MASTER BATH

THE FRANKLIN OPTIONS

Copyright 2024 Davidson Homes, Inc. | All Rights Reserved | Davidson Homes is a leading builder of quality new homes across the Southeast. Davidson Homes reserves the right to adjust items listed without prior notice or obligation. Such items may include, but are not limited to, options, included features and community information, pricing, amenities, square footage, terms or availability. Features, options, floor plans, elevations, colors, dimensions and photographs are for illustration purposes and may vary from homes built. Please see your community specialist for details. Equal housing lender. Last updated 08/15/2023.



The Daphne

Exterior Options

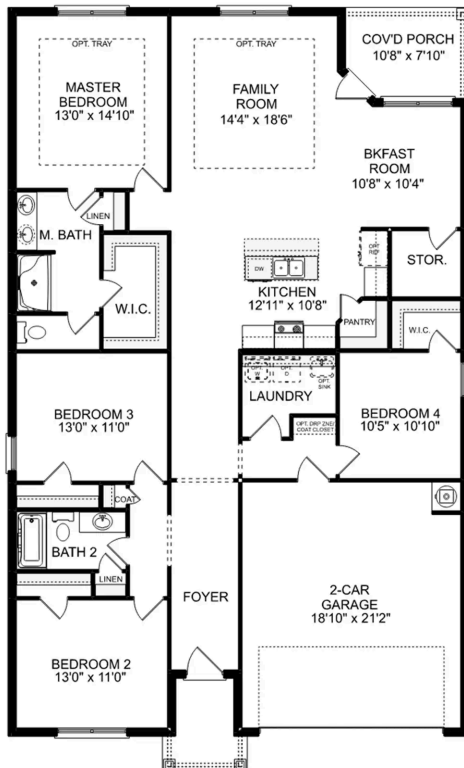


BEDS
4

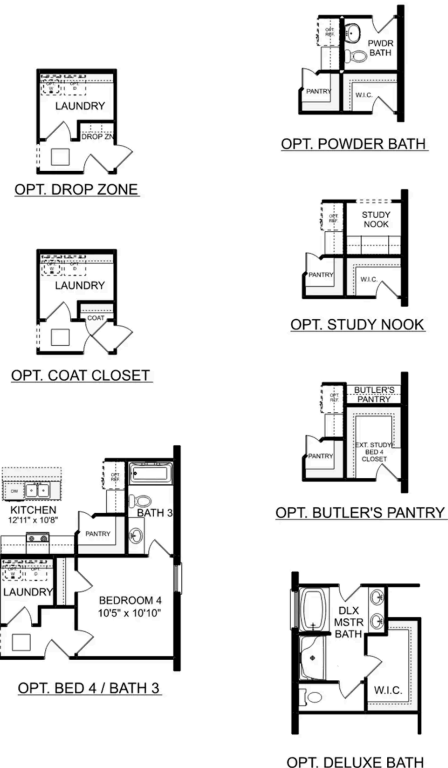
BATHS
2

SQ FT
1,964

PARKING
2



THE DAPHNE



THE DAPHNE OPTIONS



Hollon Meadow in Decatur, AL

Call (256) 330-6682
DAVIDSONHOMES.COM

The Everett

Exterior Options

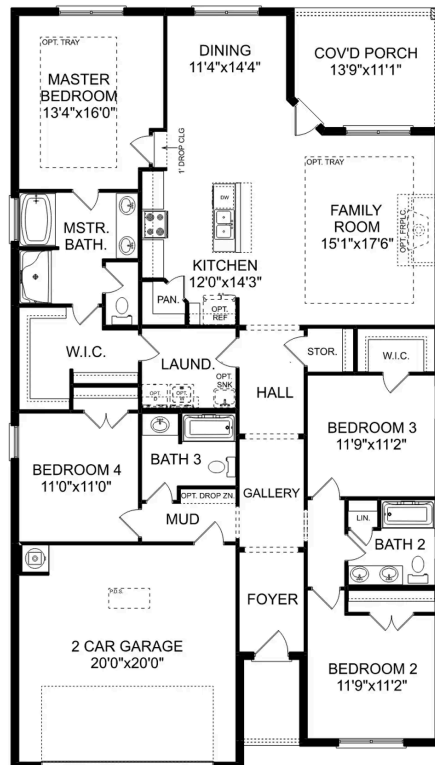


BEDS
4

BATHS
3

SQ FT
2,136

PARKING
2



THE EVERETT



The Shelby A

Exterior Options

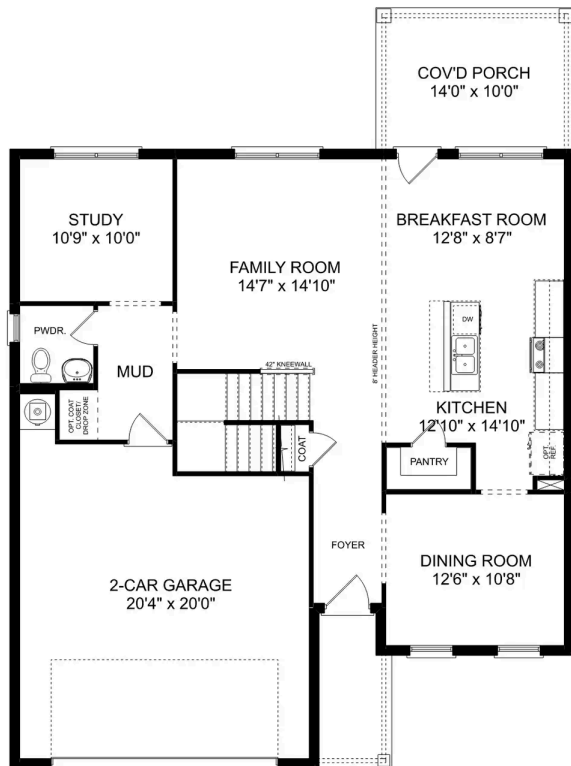


BEDS
3

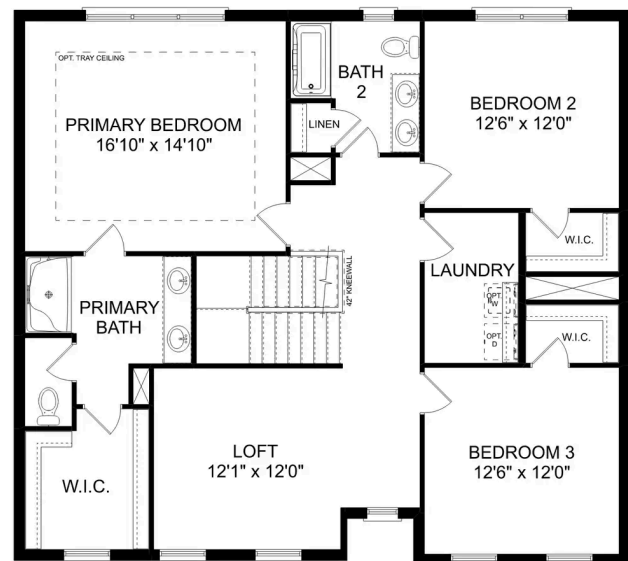
BATHS
2.5

SQ FT
2,452

PARKING
2



MAIN FLOOR



UPPER FLOOR

The Shelby A

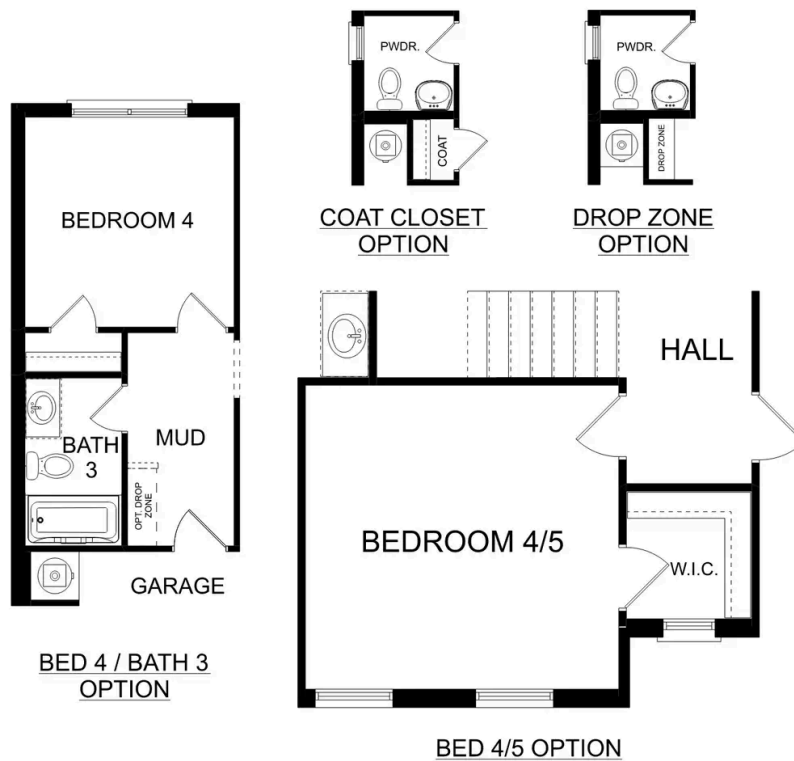
The Shelby welcomes you into a modern, open space, complete with a formal dining room and study. The kitchen overlooks an open-concept family room. The second floor features a spacious master bedroom with a large walk-in closet and master bath along with two additional bedrooms with ample walk-in closets of their own.

BEDS
3

BATHS
2.5

SQ FT
2,452

GARAGE
2



PLAN OPTIONS



Hollon Meadow in Decatur, AL

Call (256) 330-6682
DAVIDSONHOMES.COM

The Chelsea A



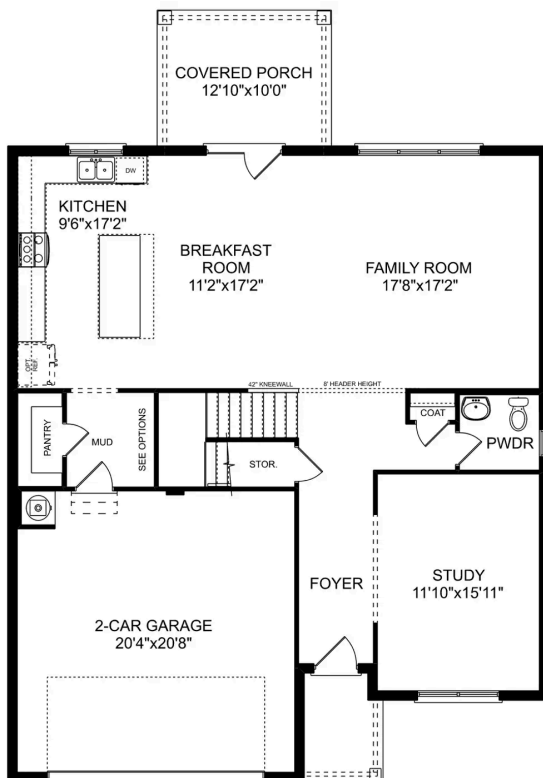
BEDS

BATHS

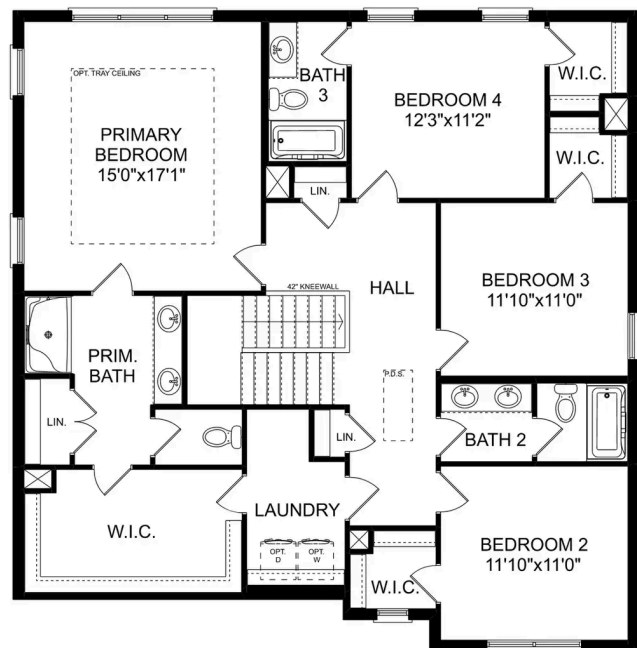
3.5

SQ FT
2,769

PARKING



MAIN FLOOR



UPPER FLOOR



The Chelsea A

The Chelsea's windows fill the open floor plan with natural light, welcoming you into this charming home. The kitchen showcases ample counterspace, overlooking the breakfast and family room. A large study on the first floor offers potential, and the home's second floor features four bedrooms, each with plenty of closet space. The master bedroom is separate from the other bedrooms for added privacy, and the fourth bedroom features its own private bath.

Make it your own with The Chelsea's flexible floor plan. Offerings vary by location, so please discuss your options with your community's agent.

BEDS
4

BATHS
3.5

SQ FT
2,769

GARAGE
2

