

Carellton

Davidson Homes in Gallatin, TN

Welcome to Carellton, one of Gallatin's newest and most desirable new home communities, featuring a variety of beautifully designed single-family homes.

Located just 30 minutes from Nashville, Carellton is the perfect location for those who want to enjoy all the amenities of the city while still being able to retreat to the peace and quiet of the suburbs. With easy access to major highways and public transportation, commuting to work or school is a breeze.

Features

Community Clubhouse
30 Minutes to Nashville

Local Schools

Liberty Creek Elementary
Liberty Creek Middle
Liberty Creek High



Community Address

360 Turfway Park

New Homes

02

Floor Plans

05

Homes from the

\$470s

Copyright 2024 Davidson Homes, Inc. | All Rights Reserved | Davidson Homes is a leading builder of quality new homes across the Southeast. Davidson Homes reserves the right to adjust items listed without prior notice or obligation. Such items may include, but are not limited to, options, included features and community information, pricing, amenities, square footage, terms or availability. Features, options, floor plans, elevations, colors, dimensions and photographs are for illustration purposes and may vary from homes built. Please see your community specialist for details. Equal housing lender. Last Updated 05/19/2024.





Carellton in Gallatin, TN

Quick Move-In Homes

Rachel Potter
Call (615) 307-0026



LIMITED TIME ONLY

Get **3%** toward
Closing Costs!

PLUS, SAVE UP TO
\$10,000*
ON DESIGN UPGRADES!

LEARN MORE →

*See link for terms/conditions.

UPDATED
05/19/2024

HOMES
02

COMMUNITY ADDRESS
360 Turfway Park



\$539,900

4 Beds 3 Baths 2,420 Sq Ft

387 Turfway Park | #748

The Willow C Plan



\$499,900

3 Beds 2.5 Baths 2,155 Sq Ft

379 Turfway Park | #746

The Logan C Plan





Carellton in Gallatin, TN

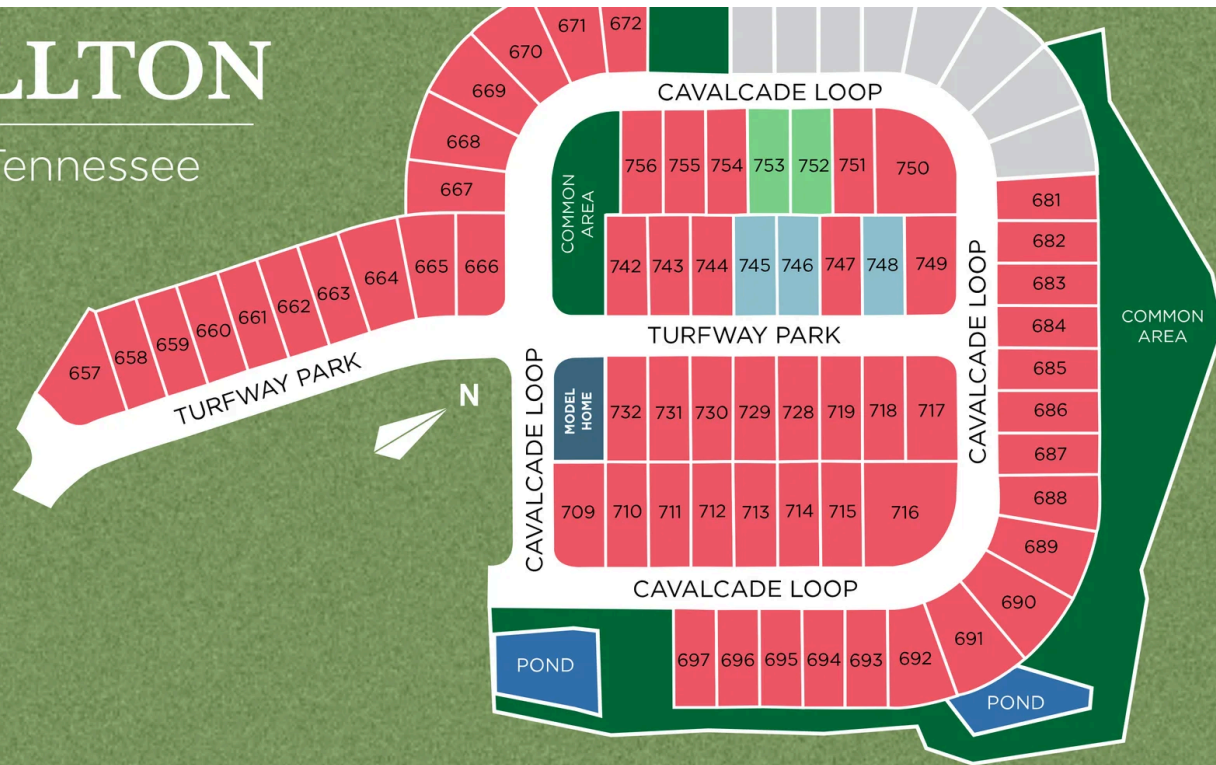
Community Homesite Map

Rachel Potter
Call (615) 307-0026



CARELLTON

Gallatin, Tennessee



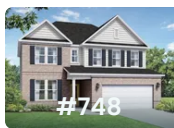
QUICK MOVE-IN

COMING SOON

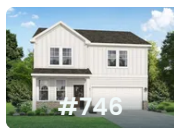
AVAILABLE

SOLD

Featured Homes for Sale



The Willow C
387 Turfway Park
\$539,900



The Logan C
379 Turfway Park
\$499,900



The Logan A



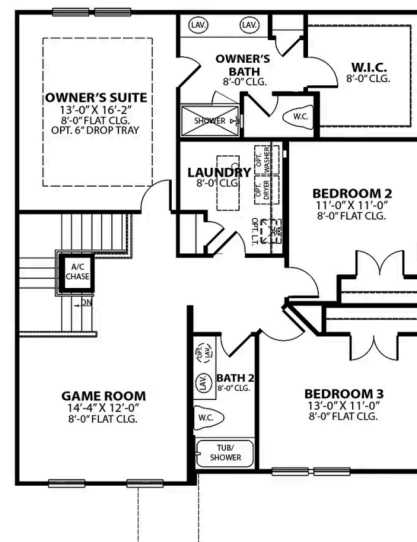
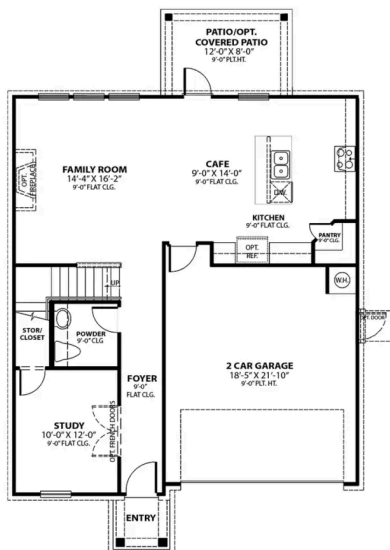
BEDS
3

BATHS
2.5

SQ FT
2,155

PARKING
2

Exterior Options



The Logan A

The Logan is a spacious and modern home with an open-concept design that seamlessly connects the living room, cafe, and kitchen. As you enter the home, you are greeted by a welcoming foyer that leads you into the heart of the house. The kitchen features ample counter space, a large island with seating, and a pantry for added storage. Down the hall is a cozy study, perfect for those who work from home or need a quiet space to read or study. The study is tucked away from the main living area, providing privacy and seclusion when needed.

BEDS
3

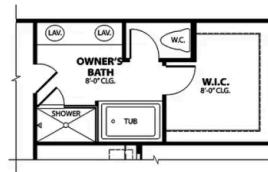
BATHS
2.5

SQ FT
2,155

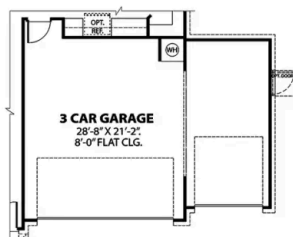
GARAGE
2



**OPT. BEDROOM 4
I.L.O. GAMEROOM**



OPT. DELUXE OWNER'S BATH



OPT. 3 CAR GARAGE

OPTIONS

The Willow B

Exterior Options



BEDS
3

BATHS
2.5

SQ FT
2,416

PARKING
2



The Willow B

The Willow's impressive front porch welcomes you into a modern, open space, complete with a formal Dining Room and Study. The Kitchen overlooks an open-concept Family Room. The second floor features a spacious Owner's Suite with a large walk-in closet and Owner's Bath along with two additional Bedrooms with ample walk-ins closets of their own.

Make it your own with The Willow's flexible floor plan, showcasing an optional gourmet kitchen, a fireplace and more! Offerings vary by location, so please discuss your options with your community's agent.

BEDS
3

BATHS
2.5

SQ FT
2,416

GARAGE
2



PLAN OPTIONS

The Ash A

Exterior Options



BEDS
3

BATHS
2.5

SQ FT
2,417

PARKING
2



MAIN FLOOR PLAN



UPPER FLOOR PLAN

The Henry A



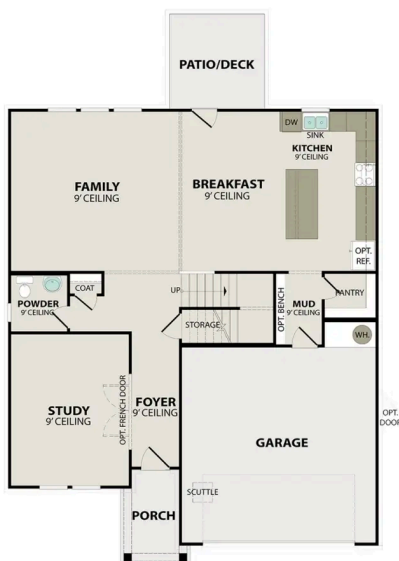
BEDS
4

BATHS
3.5

SQ FT
2,655

PARKING
2

Exterior Options



The Henry A

Welcome to The Henry! Upon entering the spacious foyer, you'll immediately notice the dedicated study, perfect for a home office or quiet reading nook. You'll be captivated by the open-concept living area, seamlessly connecting the family room, and kitchen. This layout offers ample space for entertaining, while multiple windows provide an abundance of natural light.

The Henry's thoughtful design includes four generously sized bedrooms, with the luxurious master suite boasting a walk-in closet and en-suite bathroom. Two additional full bathrooms provide convenience for family members and guests, while the half bath situated on the main floor is perfect for visitors.

BEDS
4

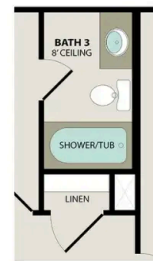
BATHS
3.5

SQ FT
2,655

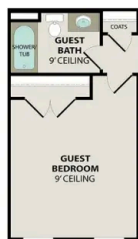
GARAGE
2



OPT. DELUXE BATH



**OPT. BATH 3
I.L.O. OWNERS W.I.C.**



**OPT. GUEST BEDROOM
I.L.O. STUDY**



OPT. FIREPLACE

OPTIONS

The Ridgeport

Exterior Options

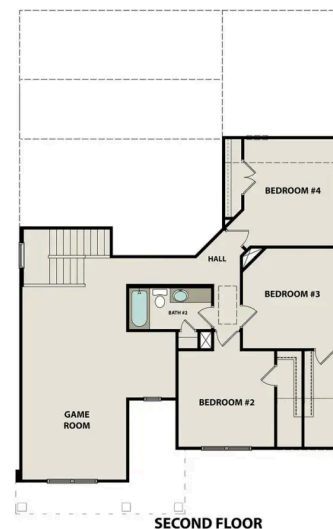
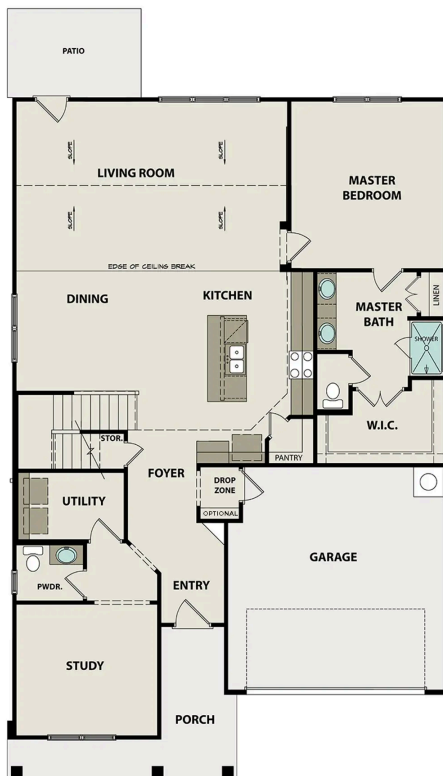


BEDS
4

BATHS
2.5

SQ FT
2,882

PARKING
2



The Ridgeport

Inside The Ridgeport's handsome exterior lies a stunning layout. The open-concept kitchen/family room welcomes visitors with plenty of entertaining space. After the party, retire to a gorgeous owners' suite, complete with a lovely master bath and walk-in closet. The downstairs study is perfect for working from home. And upstairs features three more bedrooms and a spacious game room.

Make it your own with The Ridgeport's flexible floor plan, featuring additional options like a fifth bedroom, three-car garage and a media room. Just know that offerings vary by location, so please discuss our standard features and upgrade options with your community's agent.

BEDS
4

BATHS
2.5

SQ FT
2,882

GARAGE
2

