

# The Executive Series at Lago Mar

Davidson Homes in Texas City, TX

Welcome to The Executive Series at Lago Mar by Davidson Homes – a master-planned community located along Interstate 45 in Texas City, TX. This alluring community boasts an array of luxurious single-family homes in a serene and inviting setting. We are excited to bring you the best of what Lago Mar has to offer!

## Features

Crystal Clear Lagoon  
Splash Pad  
Fitness Facility

## Local Schools

Louis G. Lobit Elementary  
Elva C. Lobit Middle  
McAdams Junior High  
Dickinson High



Community Address

2920 Arbor Edge Crossing

Floor Plans

02

Homes from the

\$480s

Copyright 2024 Davidson Homes, Inc. | All Rights Reserved | Davidson Homes is a leading builder of quality new homes across the Southeast. Davidson Homes reserves the right to adjust items listed without prior notice or obligation. Such items may include, but are not limited to, options, included features and community information, pricing, amenities, square footage, terms or availability. Features, options, floor plans, elevations, colors, dimensions and photographs are for illustration purposes and may vary from homes built. Please see your community specialist for details. Equal housing lender. Last Updated 05/19/2024.





The Executive Series at Lago Mar in Texas City, TX

# Community Homesite Map

Kathy Jones  
Call (713) 940-6193



## THE EXECUTIVE SERIES AT LAGO MAR

Texas City, Texas



COMING SOON

AVAILABLE

SOLD



# The Philip A with 3-Car G...

## Exterior Options



**BEDS**  
**4**

**BATHS**  
**3.5**

**SQ FT**  
**2,875**

**PARKING**  
**3**



**MAIN FLOOR PLAN**



**UPPER FLOOR PLAN**

## The Philip A with 3-Car Garage

Welcome to The Philip, a charming two-story home. Now featuring a 3-car garage. An extended foyer leads into an open-concept kitchen/café/family room, giving you lots of room to make this home yours. The connecting café area is the perfect place for sharing meals and provides access to the covered patio. The owner's suite is conveniently located on the main floor. Upstairs, you'll find three additional bedrooms, two bathrooms and a game room.

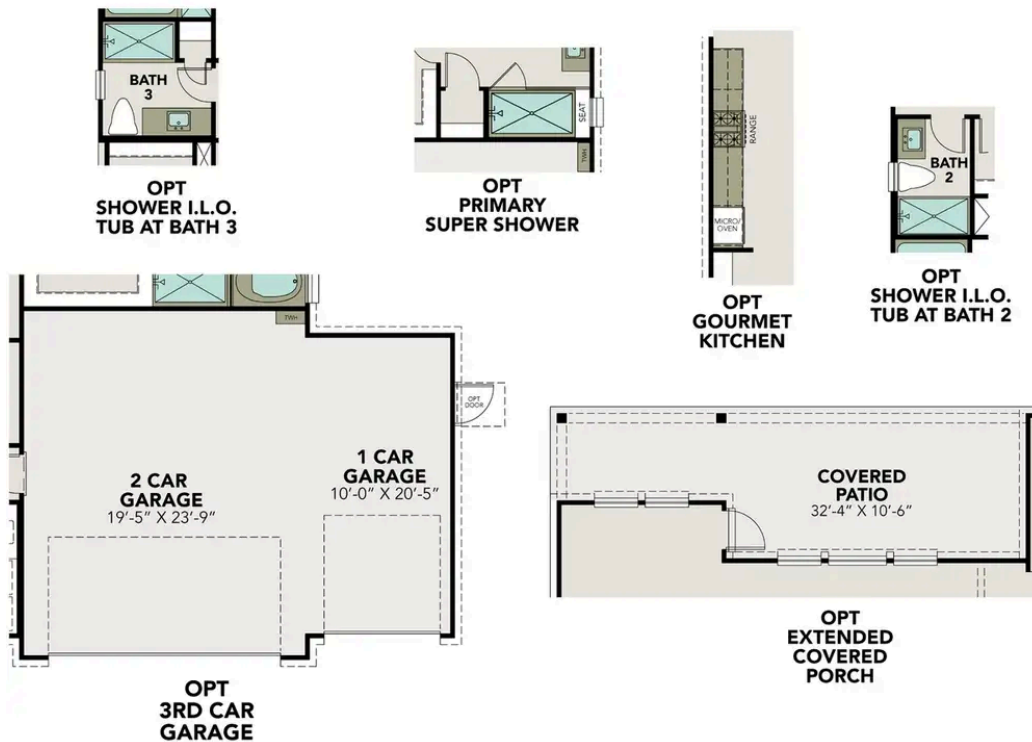
Make it your own with The Philip's flexible floor plan, featuring a variety of options and selections. Just know that offerings vary by location, so please discuss our standard features and upgrade options with your community's agent.

BEDS  
**4**

BATHS  
**3.5**

SQ FT  
**2,875**

GARAGE  
**3**



### OPTIONS

# The Victoria A

## Exterior Options

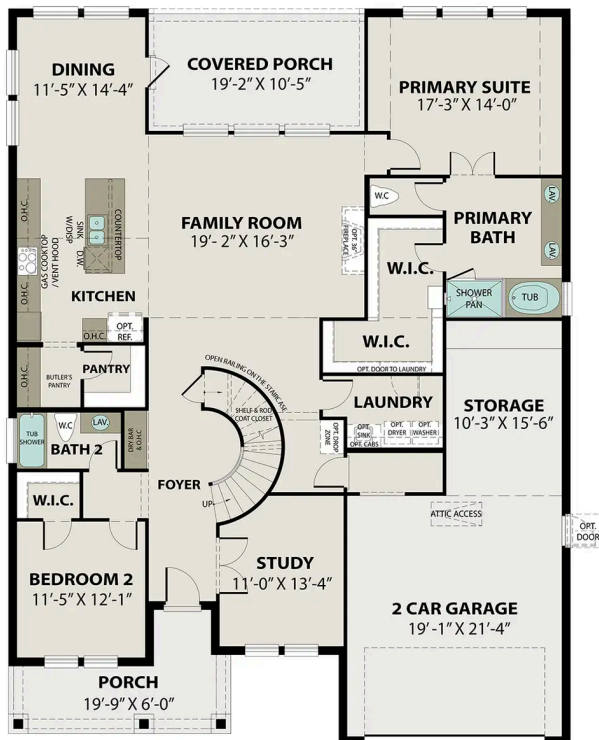


**BEDS**  
**4**

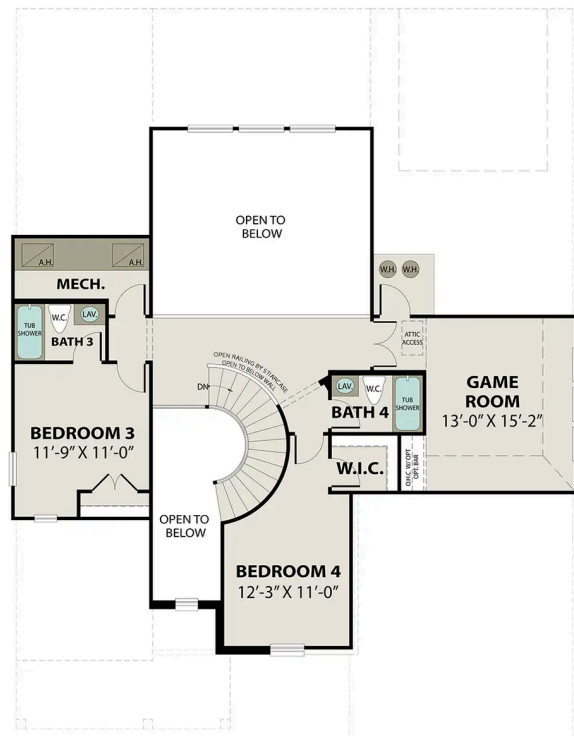
**BATHS**  
**4**

**SQ FT**  
**3,370**

**PARKING**  
**4**



**MAIN FLOOR PLAN**



**UPPER FLOOR PLAN**

## The Victoria A

Welcome to the Victoria! Now featuring a 3-car garage. This spacious floor plan gives room for everyone with its four bedrooms/bathrooms, study and game room. The kitchen features an oversized island and an adjoining butler's pantry with a full-size pantry off to the side. The owner's suite is conveniently located on the main floor showcasing expansive windows allowing for plenty of natural light. Inside the 3-car tandem garage, you'll find plenty of room for both cars and your extra stuff.

Make it your own with The Victoria's flexible floor plan, featuring a variety of options and selections. Just know that offerings vary by location, so please discuss our standard features and upgrade options with your community's... agent.

BEDS  
**4**

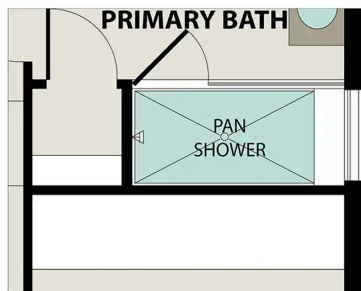
BATHS  
**4**

SQ FT  
**3,370**

GARAGE  
**4**



OPT. BEDROOM 5 I.L.O. GAME ROOM



OPT. SUPER SHOWER

### OPTIONS