

Briercreek

Davidson Homes in Meridianville, AL

Discover the charm of Briercreek, a delightful community in the scenic surroundings of Meridianville, AL, where a fresh new phase is unfolding. Nestled in the heart of Alabama's natural beauty, Briercreek is proud to offer homes with expansive homesites, providing stunning views of the countryside.

Features

Standard 3-car Garages
Large Homesites Available
Bonus Room Options

Local Schools

Madison County School Di...
Lynn Fanning Elementary
Moore's Mill Intermediate
Meridianville Middle
Hazel Green High

Utilities

Electric: Huntsville Utilities
Water: Madison County W...



Community Address

Cove Brook Drive & Berry Farm Road

Floor Plans

18

Homes from the

\$300s

Copyright 2024 Davidson Homes, Inc. | All Rights Reserved | Davidson Homes is a leading builder of quality new homes across the Southeast. Davidson Homes reserves the right to adjust items listed without prior notice or obligation. Such items may include, but are not limited to, options, included features and community information, pricing, amenities, square footage, terms or availability. Features, options, floor plans, elevations, colors, dimensions and photographs are for illustration purposes and may vary from homes built. Please see your community specialist for details. Equal housing lender. Last Updated 05/19/2024.

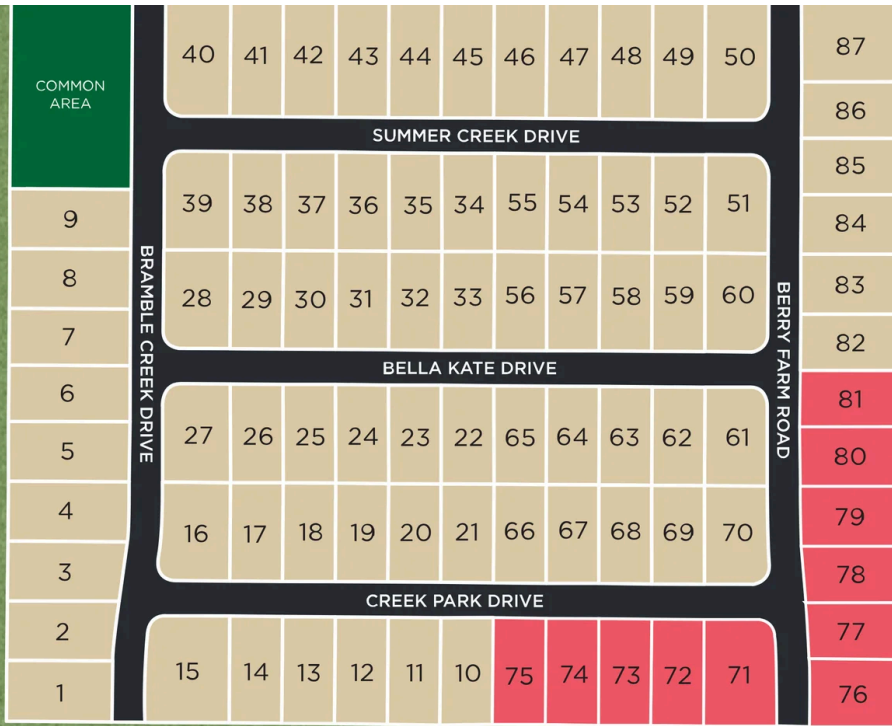




Briercreek in Meridianville, AL

Community Homesite Map

Call (256) 563-5688



BRIERCREEK

Meridianville, Alabama

COMING SOON

AVAILABLE

SOLD



The Montgomery

Exterior Options

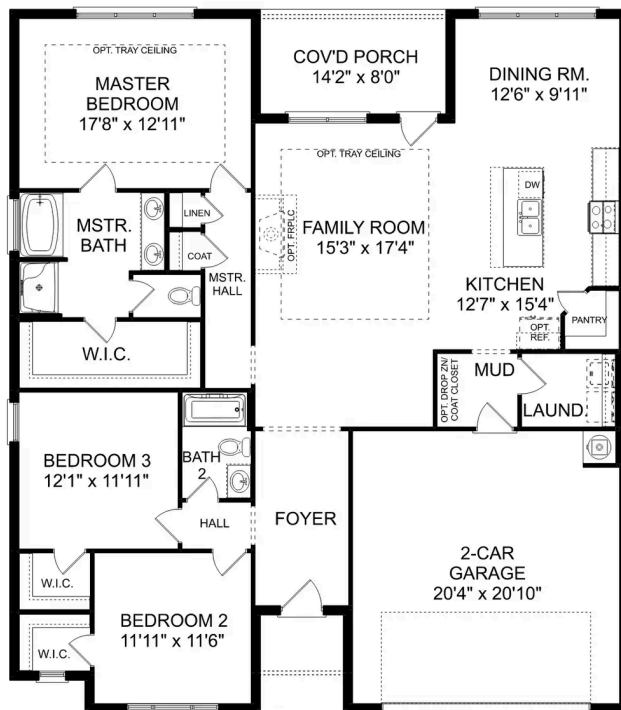


BEDS
3

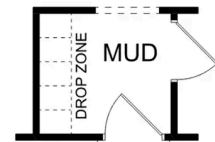
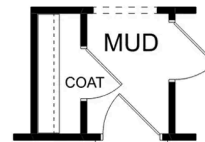
BATHS
2

SQ FT
1,912

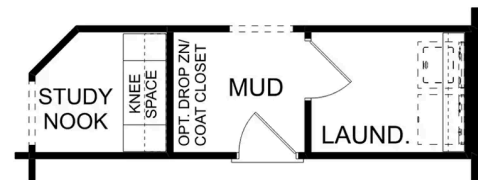
PARKING
3



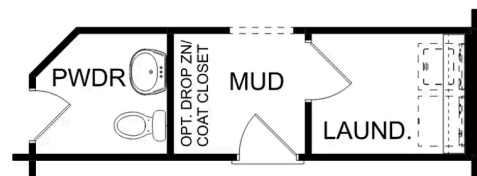
THE MONTGOMERY



OPT. COAT CLOSET OR DROP ZONE



OPT. STUDY NOOK



OPT. POWDER BATH

THE MONTGOMERY OPTIONS

The Montgomery with Bo...

Exterior Options

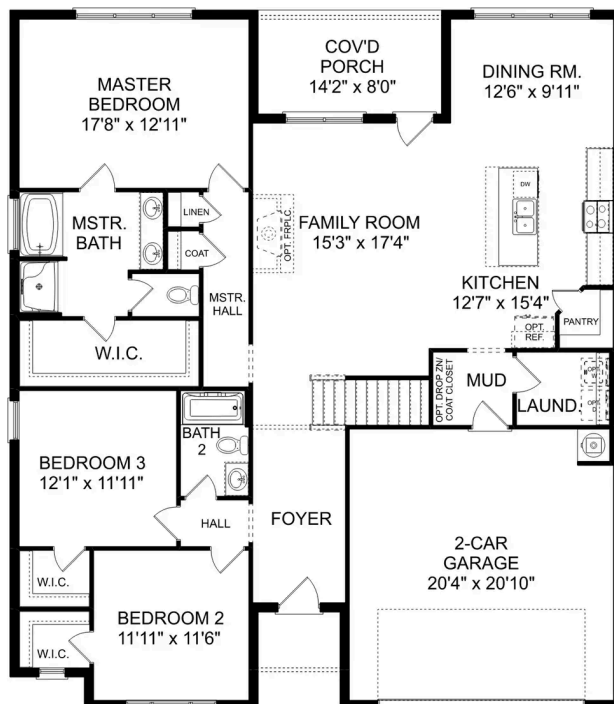


BEDS
3

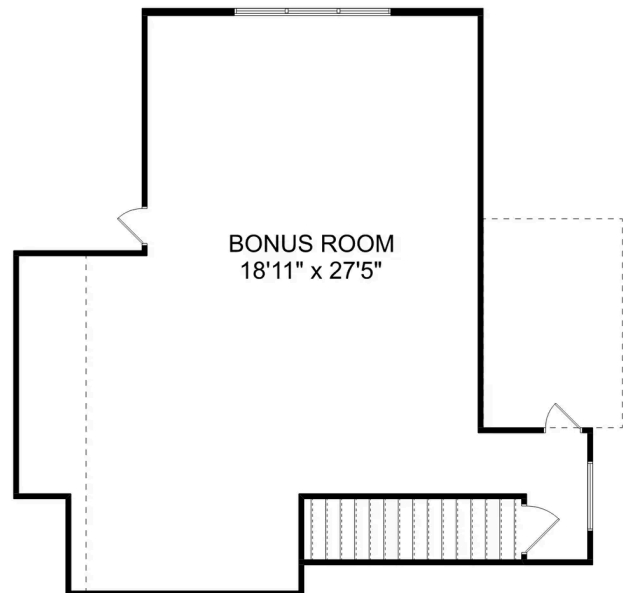
BATHS
2

SQ FT
2,684

PARKING
3



THE MONTGOMERY BONUS MAIN FLOOR



THE MONTGOMERY BONUS UPPER FLOOR

The Montgomery with Bonus

With modern touches like an open-concept, homeowner-centric layout, The Montgomery is one-level living at its finest. The kitchen showcases a huge island, corner pantry and stainless-steel appliances. The plan's open family room is perfect for entertaining guests, and the covered porch is easily accessible. Discover the plan's impressive Master Suite, complete with bright, inviting windows and a huge walk-in closet.

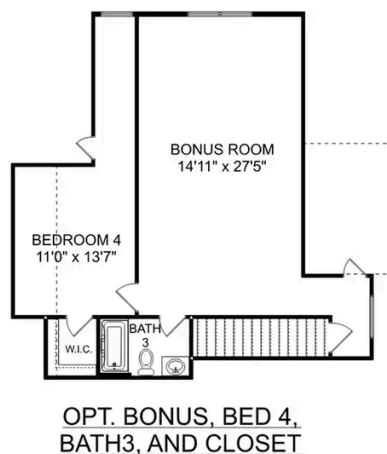
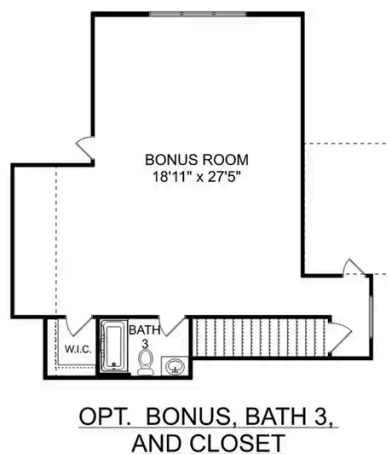
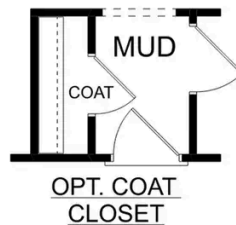
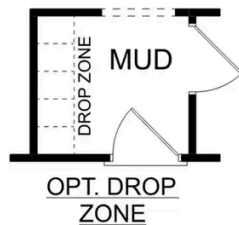
Make it your own with The Montgomery's flexible floor plan, featuring an optional bonus room, a covered porch and more! Just know that offerings vary by location, so please discuss our standard features and upgrade options with your community's agent.

BEDS
3

BATHS
2

SQ FT
2,684

GARAGE
3



THE MONTGOMERY BONUS OPTIONS

The Kirkland



Description

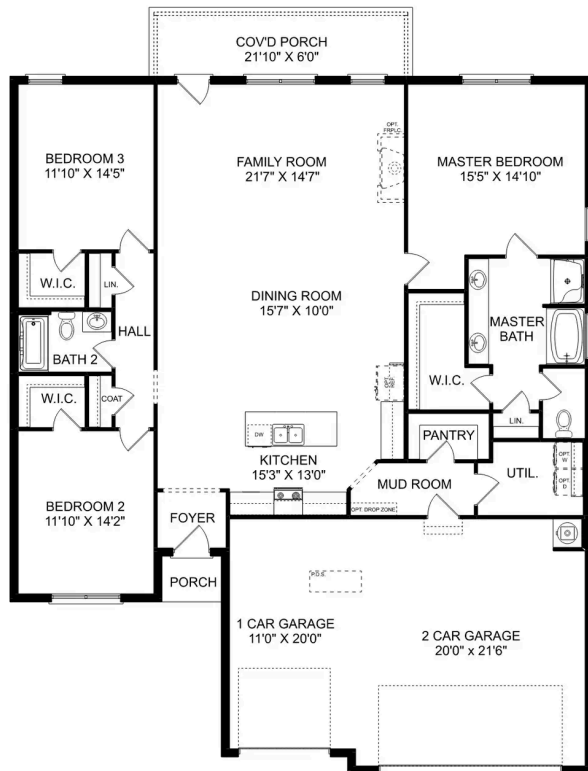
Behind the Kirkland's lovely, full-brick exterior lies a beautiful home. The foyer immediately opens up into a stunning, open-concept living space, combining the dining room, family room and kitchen.

BEDS
3

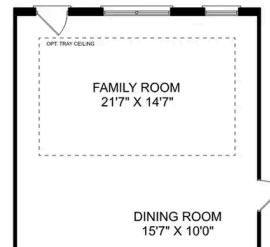
BATHS
2

SQ FT
2,076

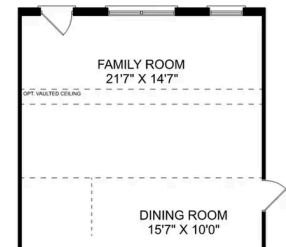
PARKING
3



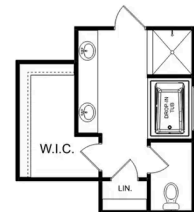
THE KIRKLAND



**OPTIONAL TRAY
CEILING**



**OPTIONAL VAULTED
CEILING**



**OPTIONAL LUXURY
MASTER BATH**

THE KIRKLAND OPTIONS

The Kirkland with Bonus



Description

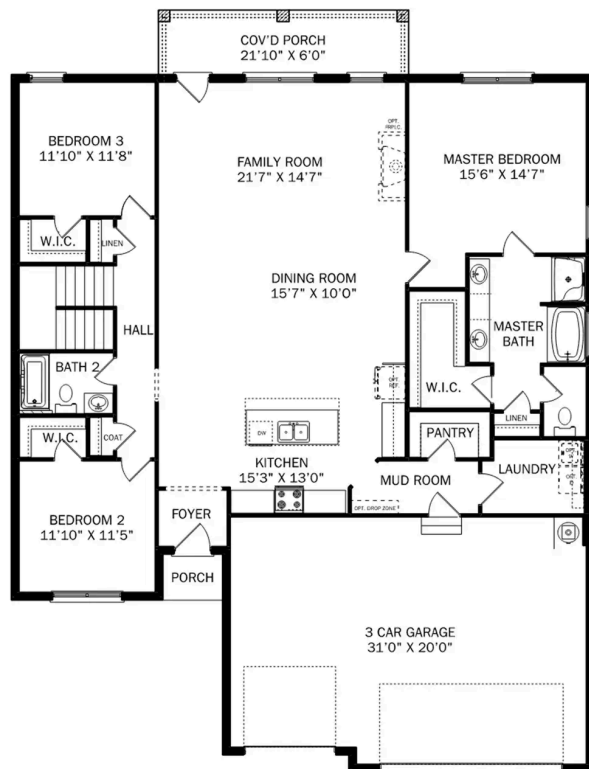
Behind the Kirkland's lovely, full-brick exterior lies a beautiful home. The foyer immediately opens up into a stunning, open-concept living space, combining the dining room, family room and kitchen.

BEDS
3

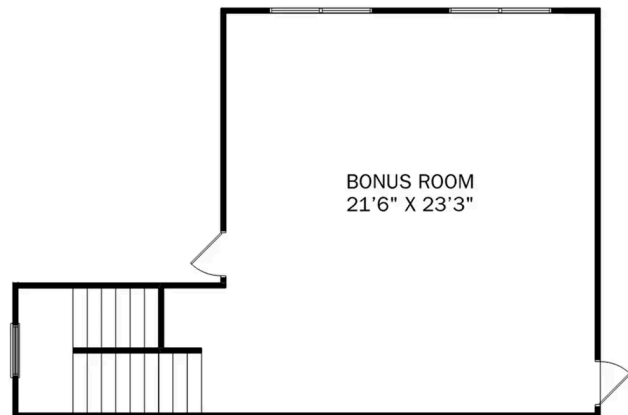
BATHS
2

SQ FT
2,767

PARKING
3



THE KIRKLAND BONUS MAIN FLOOR



THE KIRKLAND BONUS UPPER FLOOR

The Kirkland with Bonus

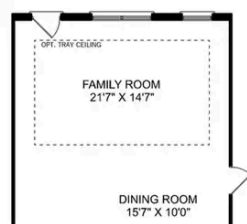
Behind the Kirkland's lovely, full-brick exterior lies a beautiful home. The foyer immediately opens up into a stunning, open-concept living space, combining the dining room, family room and kitchen. From the stunning island to its endless counterspace, the kitchen is perfect for entertaining, and the covered porch is always ready to take the party outside. The Master Suite features a lovely, bright bedroom and Master Bath, complete with shower, bathtub and walk-in closet.

BEDS
3

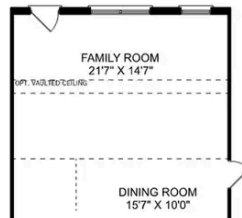
BATHS
2

SQ FT
2,767

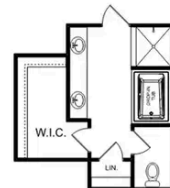
GARAGE
3



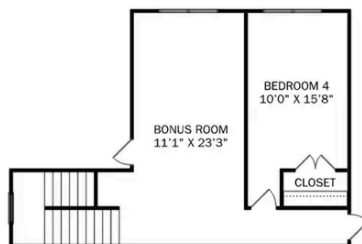
OPTIONAL TRAY
CEILING



OPTIONAL VAULTED
CEILING



OPTIONAL LUXURY
MASTER BATH



OPTIONAL BEDROOM 5



OPTIONAL BATH 3

THE KIRKLAND BONUS OPTIONS

The Rockford

Exterior Options

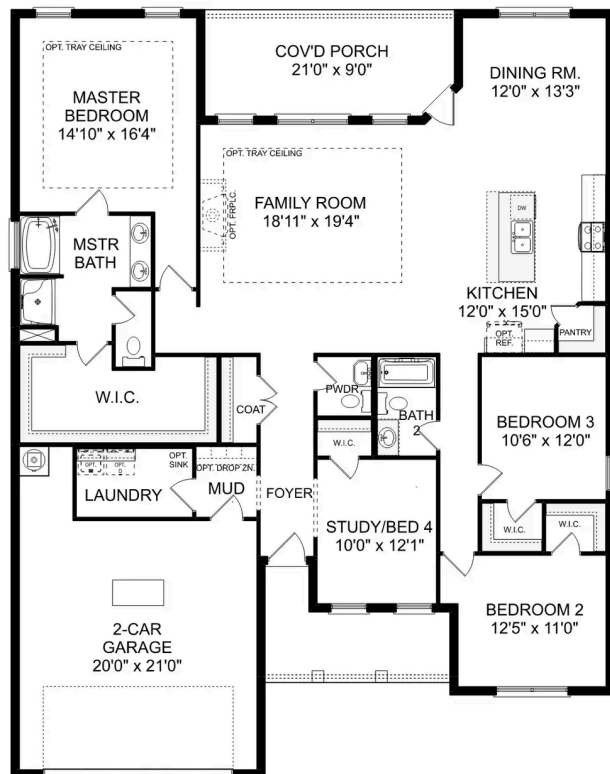


BEDS
3

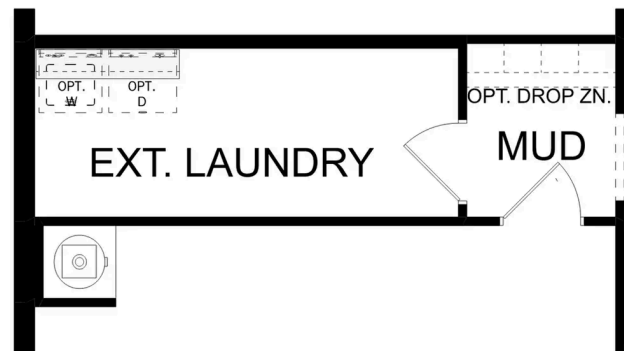
BATHS
2.5

SQ FT
2,286

PARKING
3



THE ROCKFORD



THE ROCKFORD OPTIONS

The Rockford with Bonus

Exterior Options

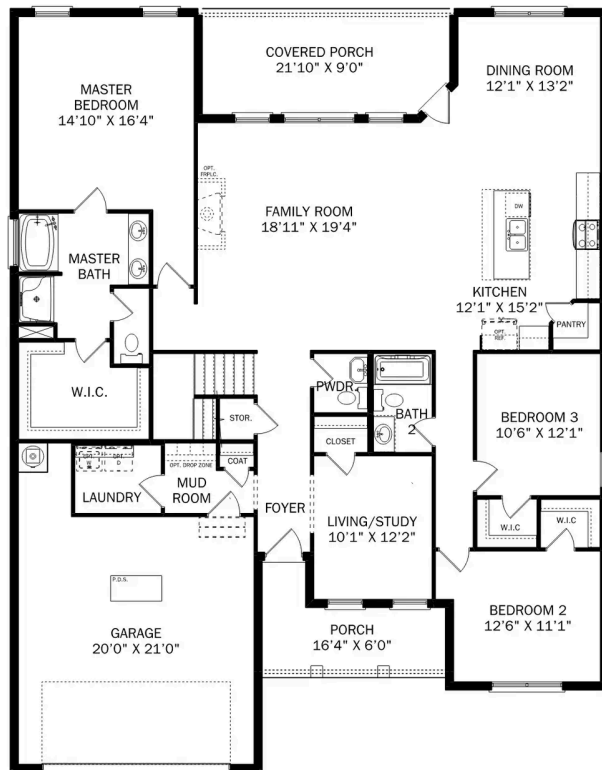


BEDS
3

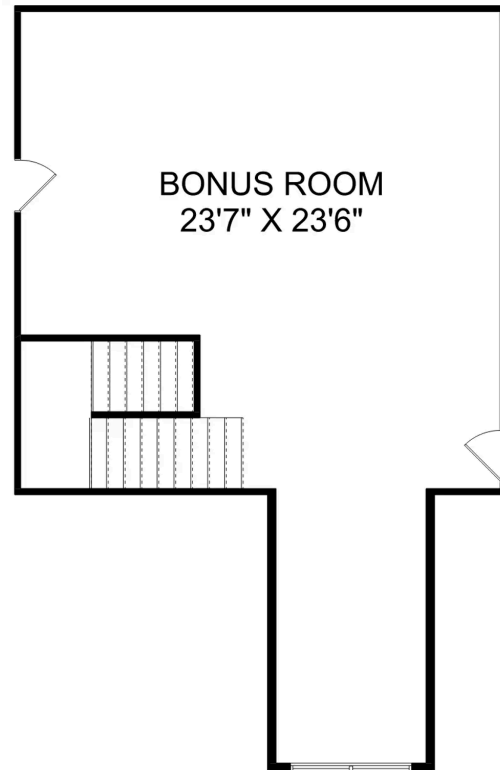
BATHS
2.5

SQ FT
2,904

PARKING
3



THE ROCKFORD BONUS MAIN FLOOR



THE ROCKFORD BONUS UPPER FLOOR

The Rockford with Bonus

With its charming, full-brick exterior, it's no wonder why The Rockford's our best-selling floor plan! A wall of windows floods the family room with natural light, and the kitchen invites you to cook – welcoming you with an oversized island, stainless-steel appliances and a large corner pantry. The isolated Master Suite features plenty of room and a massive walk-in closet.

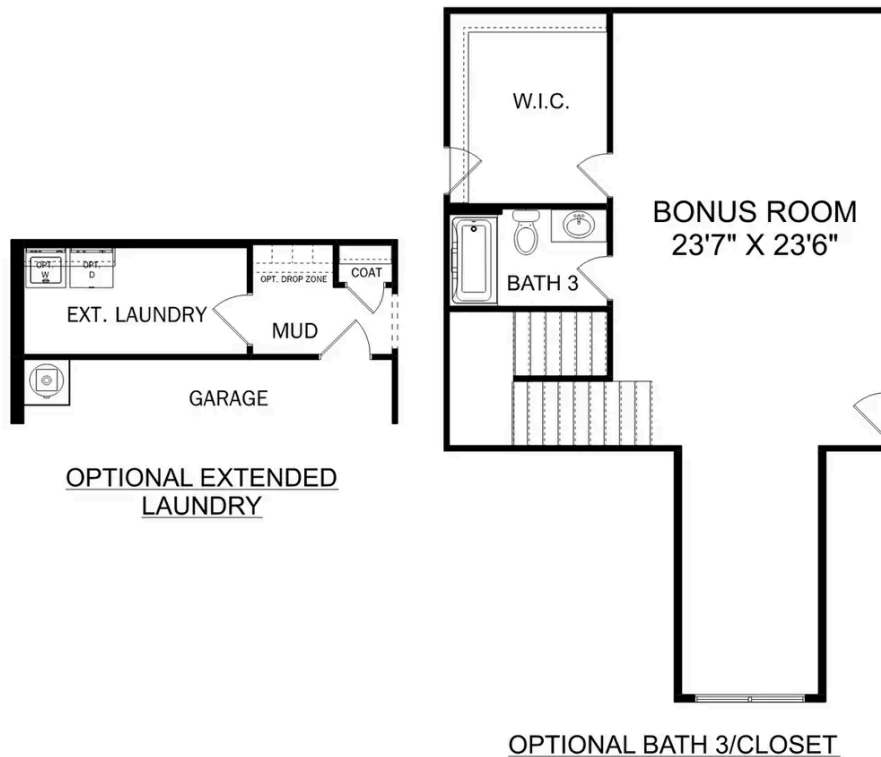
Make it your own with The Rockford's flexible floor plan, and consider replacing the home office with a fourth bedroom. It's your choice. Just know that offerings vary by location, so please discuss our standard features and upgrade options with your community's agent.

BEDS
3

BATHS
2.5

SQ FT
2,904

GARAGE
3



THE ROCKFORD OPTIONS

The Lanier



Description

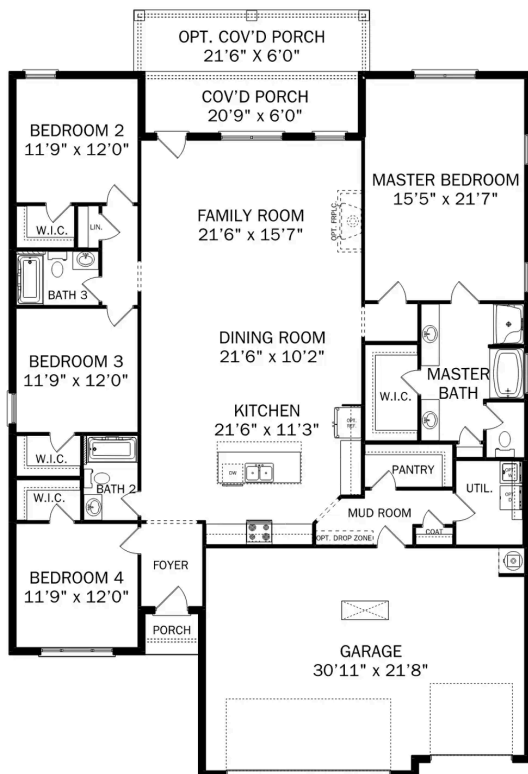
Within The Lanier's charming, full-brick exterior lies four bedrooms and plenty of space. The three-car garage leads into the home's mud room. The kitchen features a large pantry, double-sided island and more than enough counter space. Once there you'll discover the home's biggest feature – the huge, open-concept layout.

BEDS
4

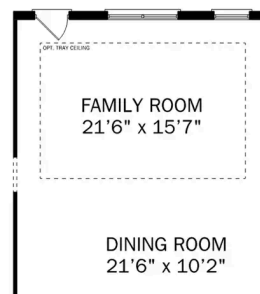
BATHS
3

SQ FT
2,411

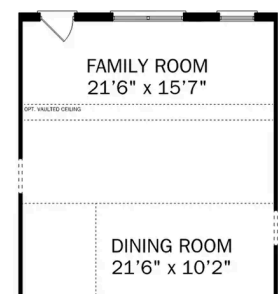
PARKING
3



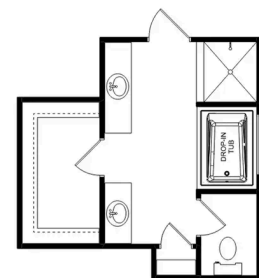
THE LANIER



**OPTIONAL TRAY
CEILING**



**OPTIONAL VAULTED
CEILING**



**OPTIONAL LUXURY
MASTER BATH**

THE LANIER OPTIONS

The Harrison

Exterior Options

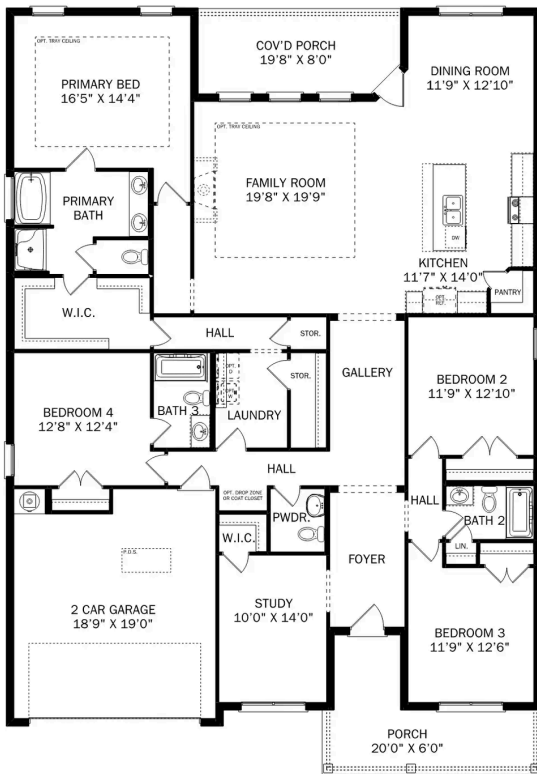


BEDS
4

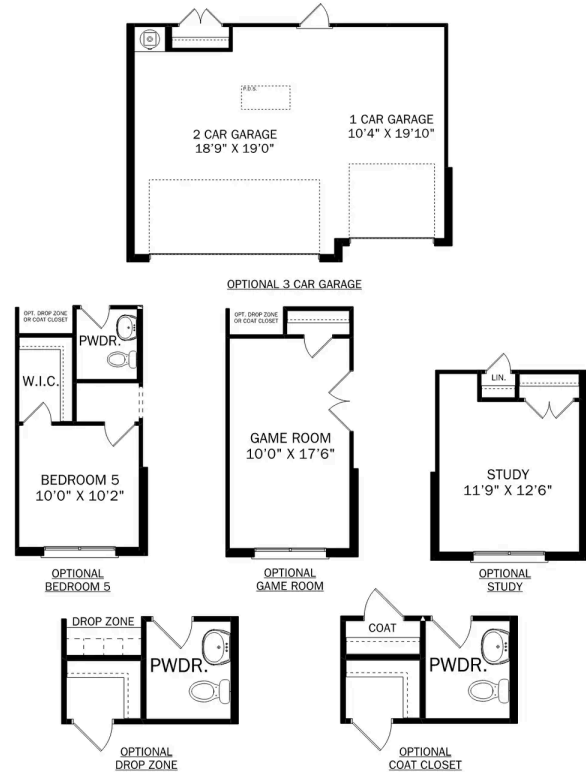
BATHS
3.5

SQ FT
2,678

PARKING
2



THE HARRISON



THE HARRISON OPTIONS

The Harrison with Bonus



Description

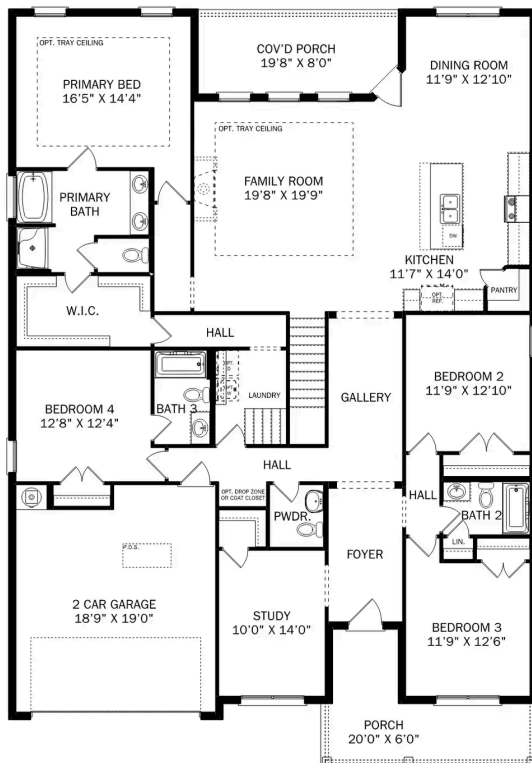
From its charming brick exterior to its open-concept kitchen/family room, The Harrison is perfect for entertaining. Its large kitchen island invites guests to pull up a chair, and its four spacious bedrooms ensure everyone has enough room.

BEDS
4

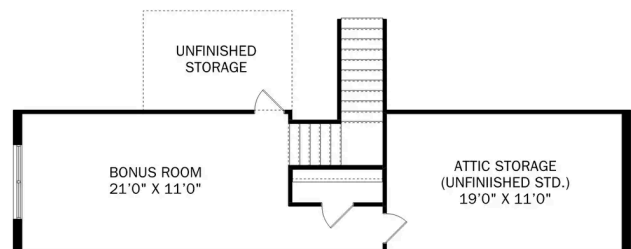
BATHS
3.5

SQ FT
2,992

PARKING
3



THE HARRISON BONUS MAIN FLOOR



THE HARRISON BONUS UPPER FLOOR

The Harrison with Bonus

From its charming brick exterior to its open-concept kitchen/family room, The Harrison is perfect for entertaining. Its large kitchen island invites guests to pull up a chair, and its four spacious bedrooms ensure everyone has enough room. The downstairs study offers a brief respite from the hustle and bustle, and the covered porch welcomes your family to grill and relax.

The Master Suite steals the show as its windows cast warm, natural light across the large room. The large walk-in closet is ready to handle your wardrobe, and the adjoining storage closet leads right into the laundry room – making laundry day significantly easier.

BEDS
4

BATHS
3.5

SQ FT
2,992

GARAGE
3



THE HARRISON BONUS OPTIONS



Briercreek in Meridianville, AL

Call (256) 563-5688
DAVIDSONHOMES.COM

The Finleigh



Description

Welcome to The Finleigh! Embrace luxury with this one-story home's next-level features, including a three-car garage, elegant dining room and open-concept family room. Inside, the designer kitchen welcomes your guests with an oversized island.

BEDS
3

BATHS
2.5

SQ FT
2,730

PARKING
3



MAIN FLOOR PLAN



The Finleigh with Bonus



Description

Welcome to The Finleigh! Embrace luxury with this one-story home's next-level features, including a three-car garage, elegant dining room and open-concept family room. Inside, the designer kitchen welcomes your guests with an oversized island.

BEDS
3

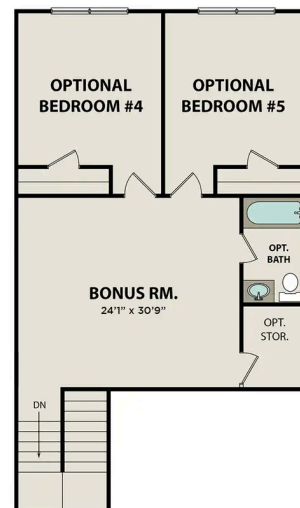
BATHS
2.5

SQ FT
3,580

PARKING
3



MAIN FLOOR PLAN



UPPER FLOOR PLAN



Briercreek in Meridianville, AL

Call (256) 563-5688
DAVIDSONHOMES.COM

The Oxford



Description

Embrace one-level living at its finest with The Oxford's lovely, full-brick exterior. Just inside its door, you'll discover an elegant dining room and formal study leading you into its open floor plan. The spacious family room/kitchen layout is perfect for entertaining, and the kitchen offers more than enough counterspace.

BEDS
4

BATHS
3.5

SQ FT
2,810

PARKING
3



MAIN FLOOR PLAN



The Madison A

Exterior Options

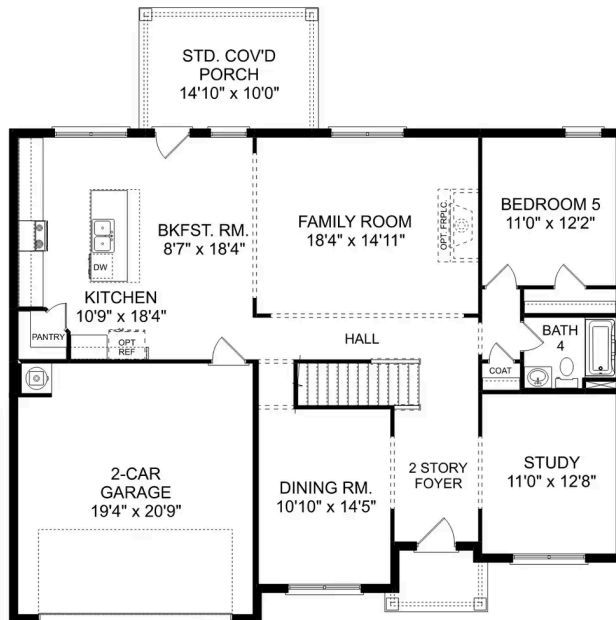


BEDS
5

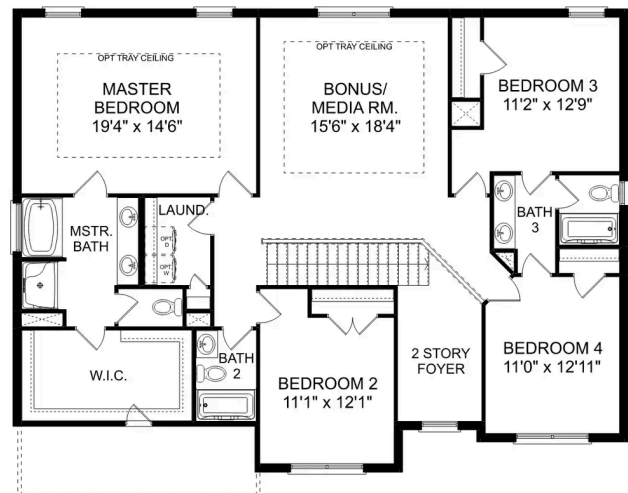
BATHS
4

SQ FT
3,199

PARKING
3



THE MADISON MAIN FLOOR



THE MADISON UPPER FLOOR

The Madison A

Behind the Madison's gorgeous brick exterior lies a massive layout, featuring five bedrooms, an elegant dining room and a welcoming study. From the designer kitchen's stainless-steel appliances to its oversized island, you'll want to make all your meals at home. The upstairs bonus room is perfect for family movie nights, and the Master Suite features a huge walk-in closet!

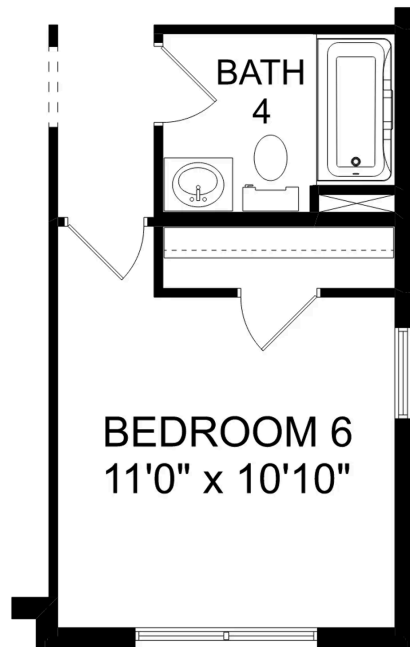
Make it your own with The Madison's flexible floor plan. Just know that offerings vary by location, so please discuss our standard features and upgrade options with your community's agent.

BEDS
5

BATHS
4

SQ FT
3,199

GARAGE
3



OPT. BEDROOM 6

THE MADISON OPTIONS



Briercreek in Meridianville, AL

Call (256) 563-5688
DAVIDSONHOMES.COM

The Valencia



Description

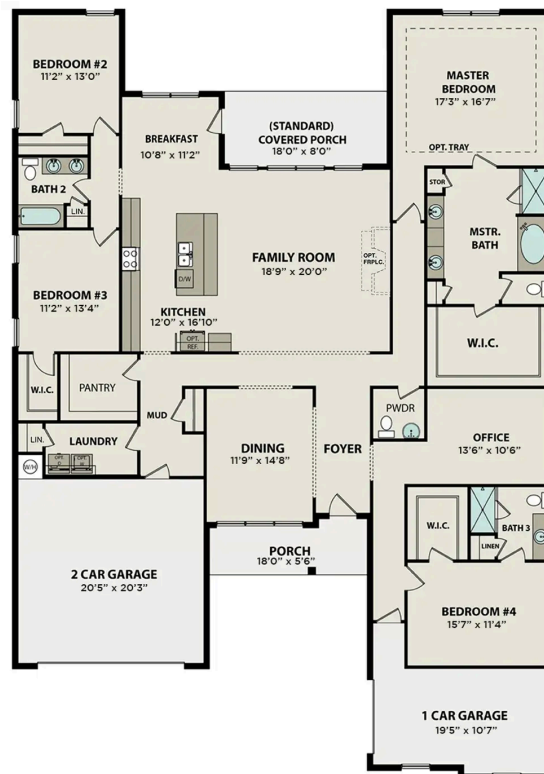
Entering through The Valencia's foyer, guests quickly discover an elegant dining room as they head toward the family room's open layout. The kitchen features an oversized island, plenty of counterspace and a massive pantry.

BEDS
4

BATHS
3.5

SQ FT
3,170

PARKING
3



The Valencia with Bonus



Description

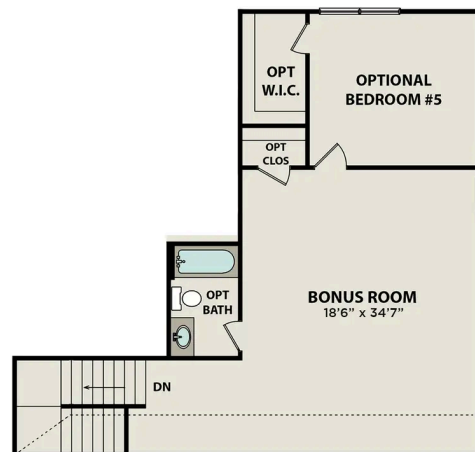
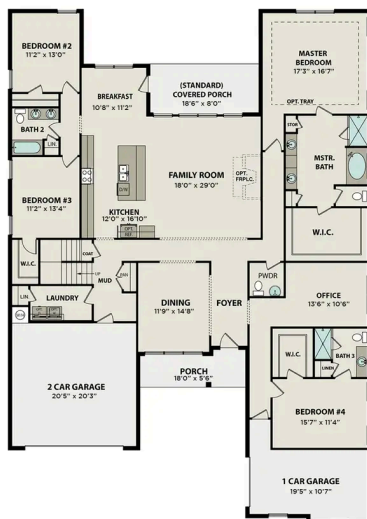
Entering through The Valencia's foyer, guests quickly discover an elegant dining room as they head toward the family room's open layout. The kitchen features an oversized island, plenty of counterspace and a massive pantry.

BEDS
4

BATHS
3.5

SQ FT
3,980

PARKING
3



The Emory



Description

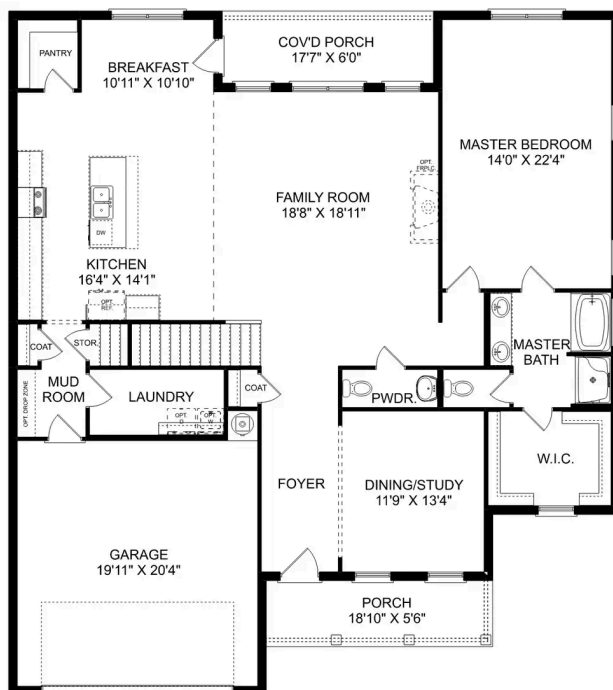
Enter The Emory, and you'll immediately discover why it's one of our most-loved plans. From its elegant dining room to its covered porch, this home has everything you need – and more! The designer kitchen features an oversized island, and the open-concept layout makes The Emory feel even larger.

BEDS
4

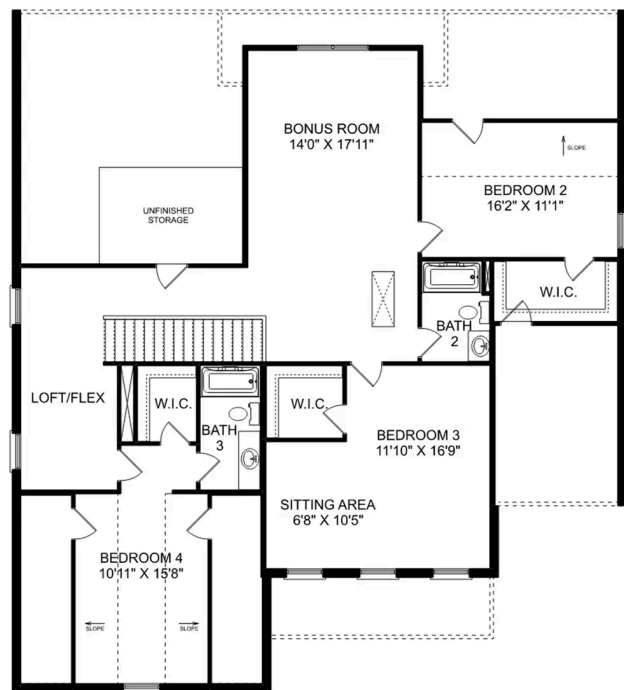
BATHS
3.5

SQ FT
3,563

PARKING
3



THE EMORY MAIN FLOOR



THE EMORY UPPER FLOOR

The Ashford



Description

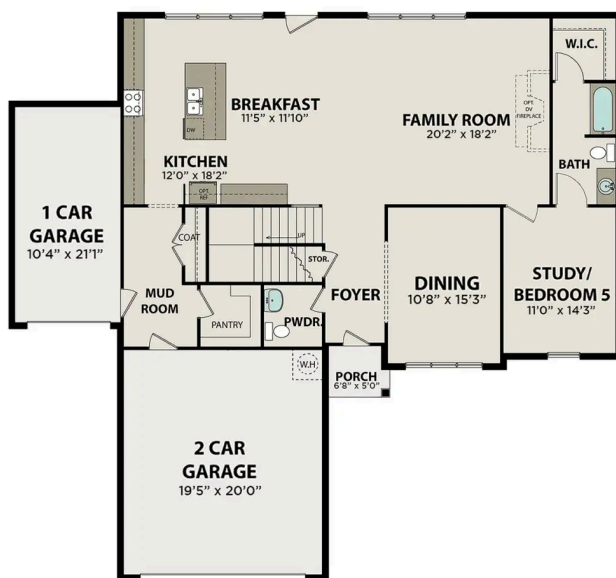
From its five bedrooms to its 4.5 bathrooms, The Ashford is ready for you and your whole family. It showcases a spacious Master Bedroom, private office and two-car garage. On its main floor, you'll discover a massive, open-concept kitchen/family room that leads to the covered porch outside.

BEDS
5

BATHS
4.5

SQ FT
3,765

PARKING
3



MAIN FLOOR PLAN



UPPER FLOOR PLAN

The Torrance



Description

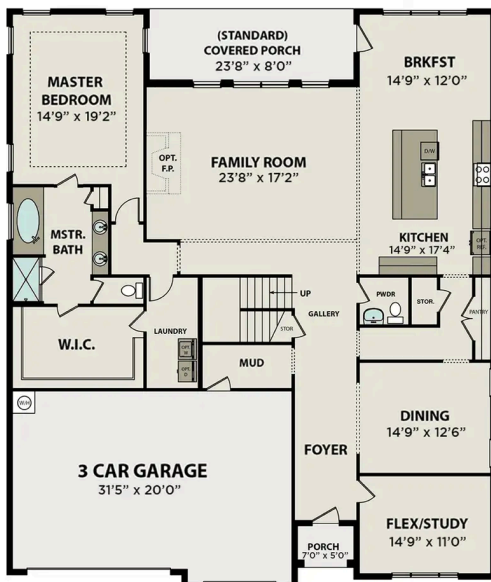
Embrace the space. With more than enough room for everyone, The Torrance makes the most of its square footage. From its massive, open layout to its multiple walk-in closets, this home is perfect for a growing family.

BEDS
4

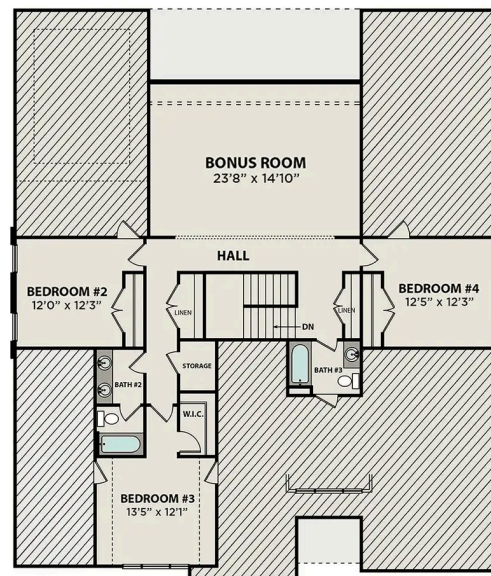
BATHS
3.5

SQ FT
4,140

PARKING
3



MAIN FLOOR PLAN



UPPER FLOOR PLAN

The Torrance

Embrace the space. With more than enough room for everyone, The Torrance makes the most of its square footage. From its massive, open layout to its multiple walk-in closets, this home is perfect for a growing family. The three-car garage ensures everyone can park under the same roof, and the downstairs study and dining room welcome your guests as they enter. The Master Suite is stunning with optional tray ceiling. Upstairs features a massive bonus room in addition to its three bedrooms.

Make it your own with The Torrance's flexible floor plan. From adding an extra bedroom to extending your covered porch, you've got every opportunity to make The Torrance your dream home. Just know that offerings vary by location, so... please discuss our standard features and upgrade options with your

BEDS
4

BATHS
3.5

SQ FT
4,140

GARAGE
3



BEDRM. #5 FULL BATH OPT.