

# Ricketts Farm

Davidson Homes in Athens, AL

Now selling! Come to beautiful Athens, Alabama and find a home that's perfect for you with Davidson Homes in our new Ricketts Farm community! We're excited to offer our gorgeous single-family homes for sale in an area of Athens known for its natural beauty and outdoor recreation.

## Features

Granite Countertops  
Excellent Schools  
Open floor plans

## Local Schools

Limestone County School ...  
Creskide Elementary  
East Limestone High

## Utilities

Gas: Athens Utilities  
Electric: Athens Utilities  
Water: Limestone County



Community Address

26591 Kyle Lane

New Homes

06

Floor Plans

08

Homes from the

\$250s

Copyright 2024 Davidson Homes, Inc. | All Rights Reserved | Davidson Homes is a leading builder of quality new homes across the Southeast. Davidson Homes reserves the right to adjust items listed without prior notice or obligation. Such items may include, but are not limited to, options, included features and community information, pricing, amenities, square footage, terms or availability. Features, options, floor plans, elevations, colors, dimensions and photographs are for illustration purposes and may vary from homes built. Please see your community specialist for details. Equal housing lender. Last Updated 05/19/2024.





Ricketts Farm in Athens, AL

## Quick Move-In Homes

UPDATED  
05/19/2024

HOMES  
06

Mike Styles  
Call (256) 935-2151



COMMUNITY ADDRESS  
26591 Kyle Lane



**\$277,291**  
**3 Beds 2 Baths 1,484 Sq Ft**  
16579 Demi Drive | #128  
The Asheville Plan



**\$333,158**  
**4 Beds 3 Baths 2,058 Sq Ft**  
16625 Demi Drive | #124  
The Everett B Plan



**\$308,887**  
**4 Beds 3 Baths 1,964 Sq Ft**  
16549 Demi Drive | #131  
The Daphne C Plan



**\$327,588**  
**4 Beds 3 Baths 2,058 Sq Ft**  
26659 Kyle Lane | #42  
The Everett B Plan



**\$277,934**  
**3 Beds 2 Baths 1,484 Sq Ft**  
16640 Demi Drive | #80  
The Asheville C Plan



**\$304,538**  
**4 Beds 2 Baths 1,964 Sq Ft**  
16653 Demi Drive | #118  
The Daphne Plan







Ricketts Farm in Athens, AL

## Community Homesite Map

Mike Styles  
Call (256) 935-2151



### RICKETTS FARM

Athens, Alabama



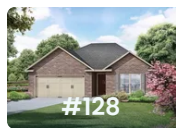
QUICK MOVE-IN

COMING SOON

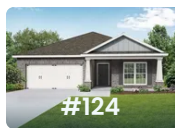
AVAILABLE

SOLD

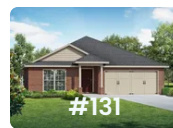
### Featured Homes for Sale



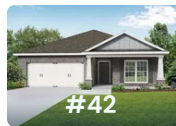
**The Asheville**  
16579 Demi Drive  
**\$277,291**



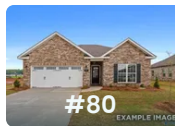
**The Everett B**  
16625 Demi Drive  
**\$333,158**



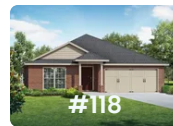
**The Daphne C**  
16549 Demi Drive  
**\$308,887**



**The Everett B**  
26659 Kyle Lane  
**\$327,588**



**The Asheville C**  
16640 Demi Drive  
**\$277,934**



**The Daphne**  
16653 Demi Drive  
**\$304,538**



# The Asheville

## Exterior Options

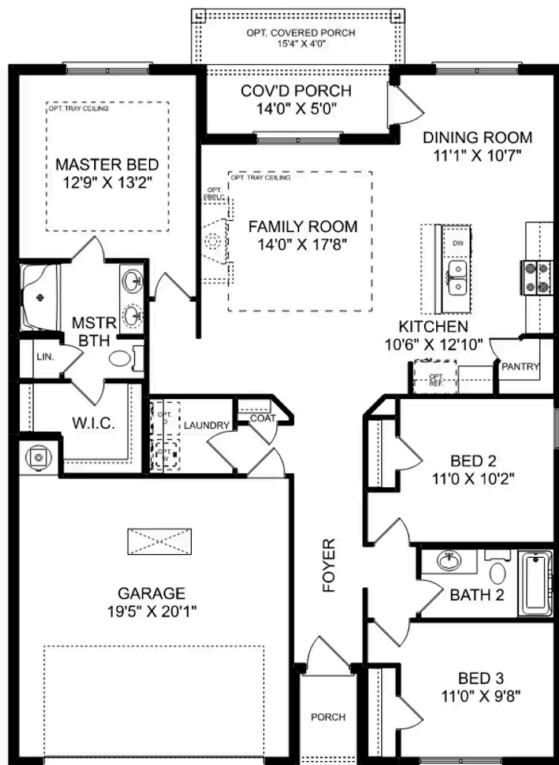


**BEDS**  
**3**

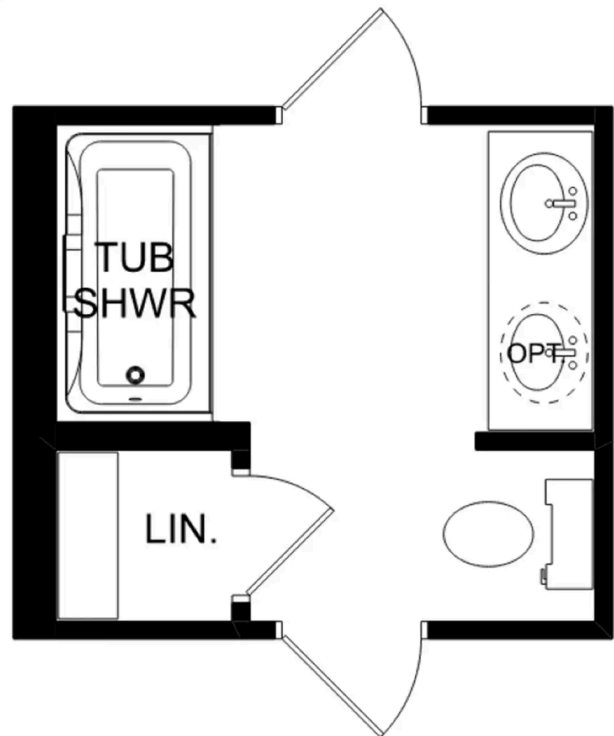
**BATHS**  
**2**

**SQ FT**  
**1,484**

**PARKING**  
**2**



**THE ASHEVILLE**



**THE ASHEVILLE OPTIONS**



# The Franklin

## Exterior Options

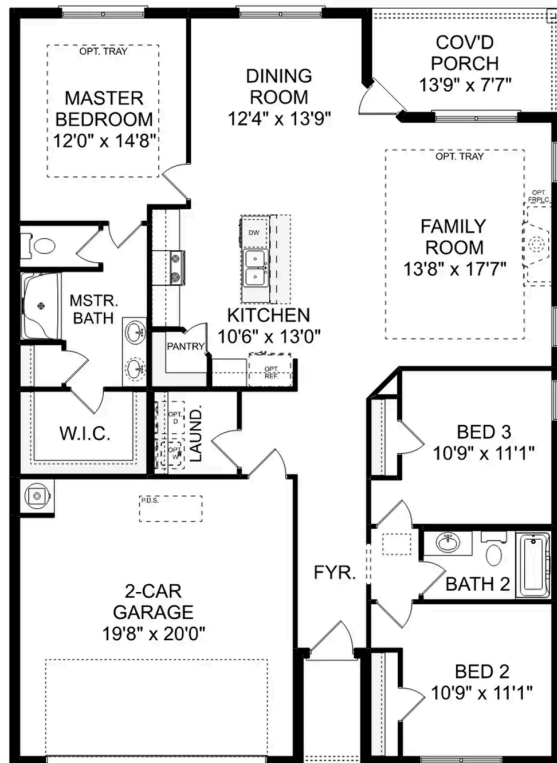


**BEDS**  
**3**

**BATHS**  
**2**

**SQ FT**  
**1,620**

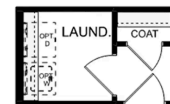
**PARKING**  
**2**



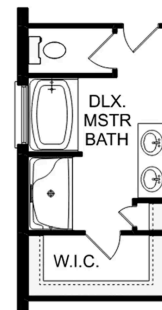
**THE FRANKLIN**



OPT. DROP ZONE



OPT. COAT CLOSET



OPT. DELUXE MASTER BATH

**THE FRANKLIN OPTIONS**

# The Daphne

## Exterior Options

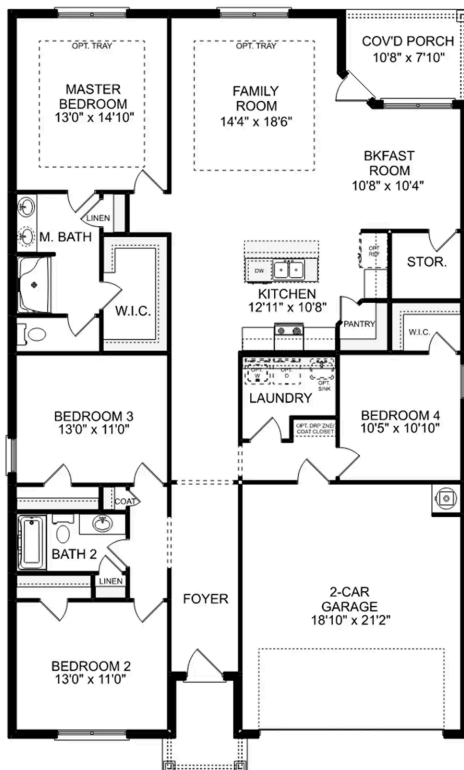


**BEDS**  
**4**

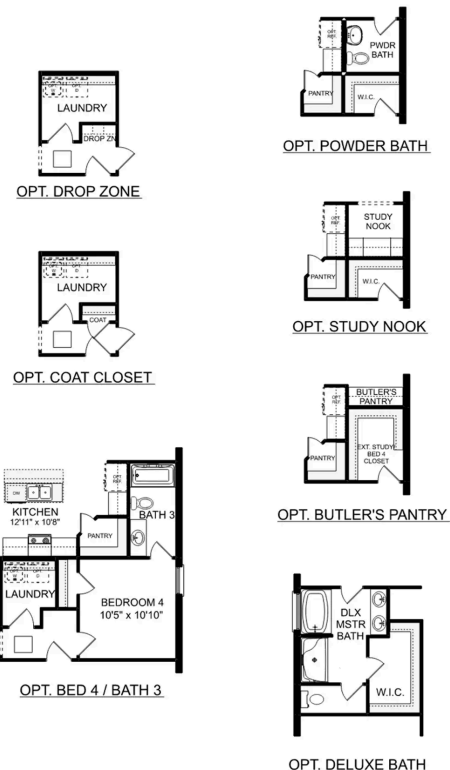
**BATHS**  
**2**

**SQ FT**  
**1,964**

**PARKING**  
**2**



**THE DAPHNE**



**THE DAPHNE OPTIONS**





Ricketts Farm in Athens, AL

Call (256) 935-2151  
DAVIDSONHOMES.COM

## The Everett

### Exterior Options

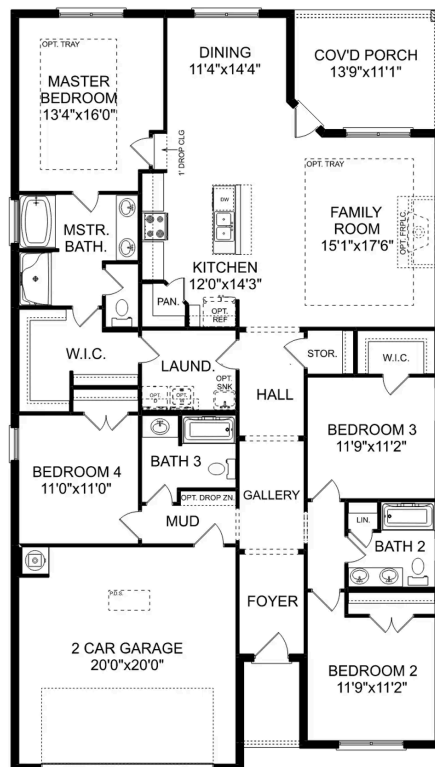


BEDS  
**4**

BATHS  
**3**

SQ FT  
**2,136**

PARKING  
**2**



THE EVERETT



# The Shelby A

## Exterior Options

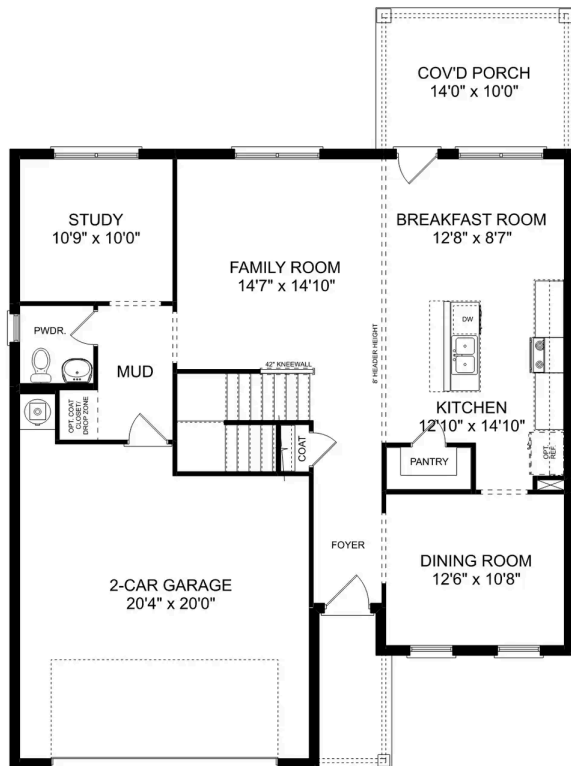


**BEDS**  
**3**

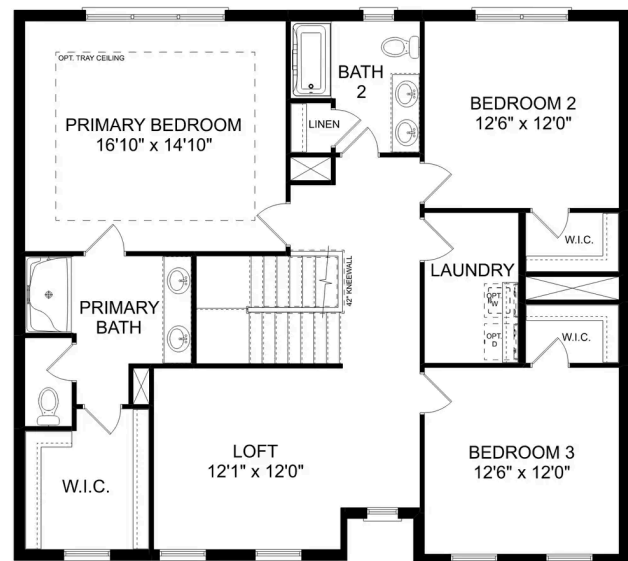
**BATHS**  
**2.5**

**SQ FT**  
**2,452**

**PARKING**  
**2**



**MAIN FLOOR**



**UPPER FLOOR**



## The Shelby A

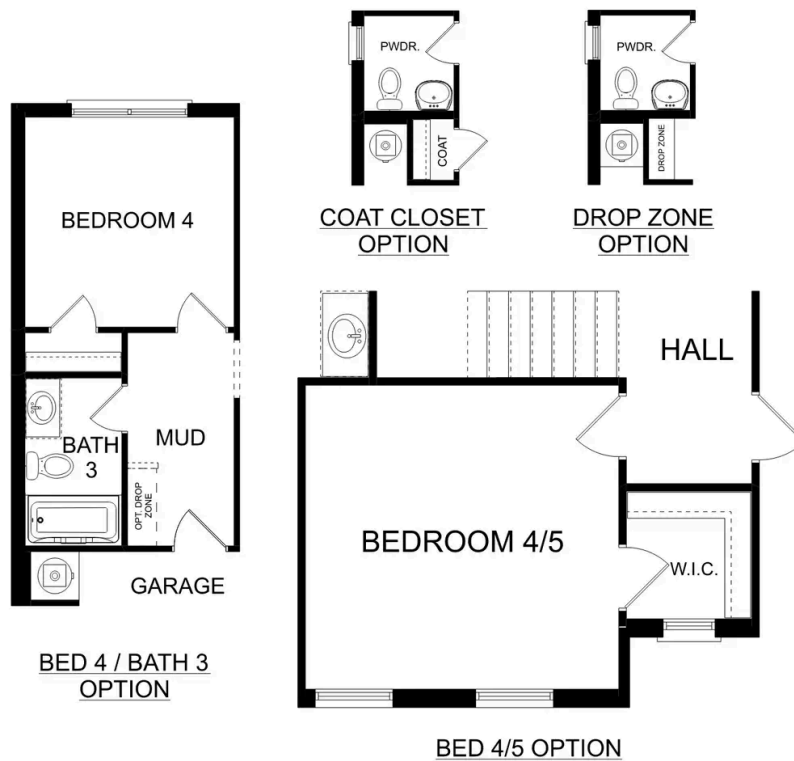
The Shelby welcomes you into a modern, open space, complete with a formal dining room and study. The kitchen overlooks an open-concept family room. The second floor features a spacious master bedroom with a large walk-in closet and master bath along with two additional bedrooms with ample walk-in closets of their own.

BEDS  
**3**

BATHS  
**2.5**

SQ FT  
**2,452**

GARAGE  
**2**



**PLAN OPTIONS**

# The Charleston D



## Description

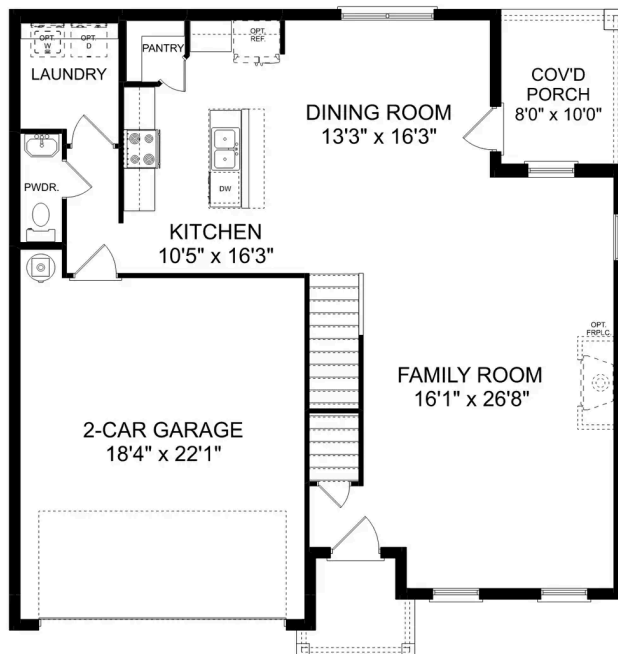
The sky's the limit with The Charleston's two-story layout and massive bonus room. Inside the home's brick exterior, the open-concept kitchen overlooks the huge family room. The Master Suite offers you a personal retreat – complete with large walk-in closet.

**BEDS**  
**4**

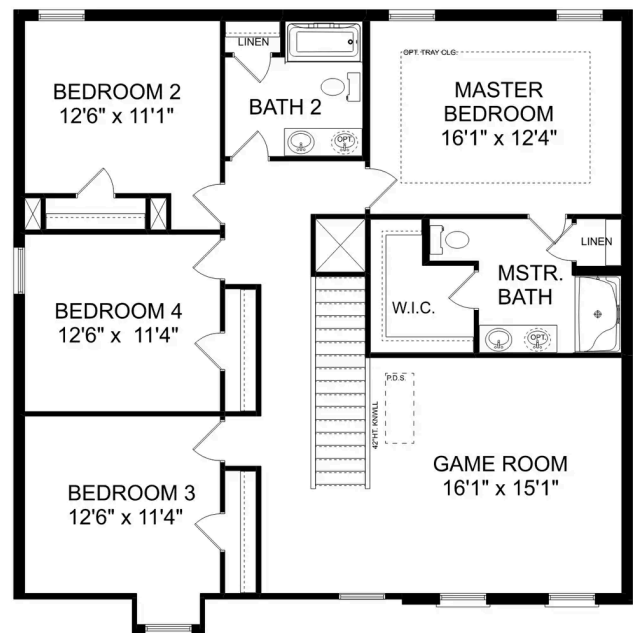
**BATHS**  
**2.5**

**SQ FT**  
**2,505**

**PARKING**  
**2**



THE CHARLESTON D MAIN FLOOR



THE CHARLESTON D UPPER FLOOR



## The Charleston D

The sky's the limit with The Charleston's two-story layout and massive bonus room. Inside the home's brick exterior, the open-concept kitchen overlooks the huge family room. The Master Suite offers you a personal retreat – complete with large walk-in closet. Whether you're looking for a game room or a fifth bedroom, the upstairs bonus room gives you all the flexibility you need. Make it your own with The Charleston's flexible floor plan! Just know that offerings vary by location, so please discuss our standard features and upgrade options with your community's agent.

BEDS  
**4**

BATHS  
**2.5**

SQ FT  
**2,505**

GARAGE  
**2**



THE CHARLESTON D OPTIONS

# The Chelsea A

## Exterior Options

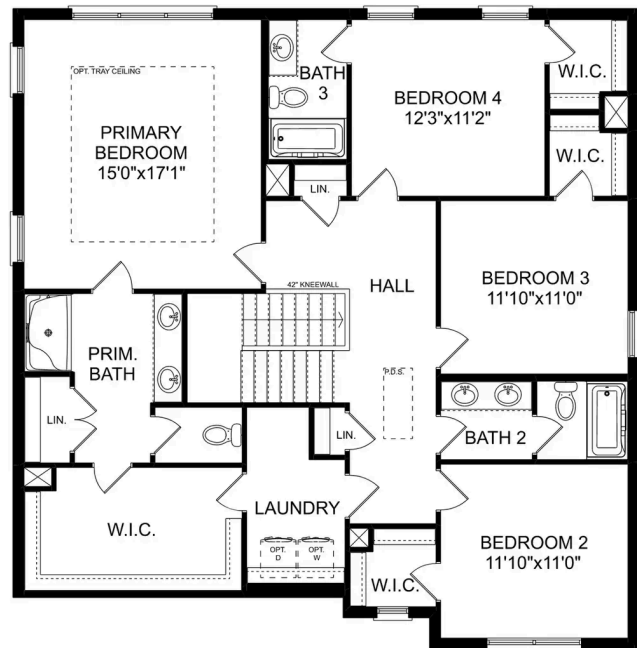
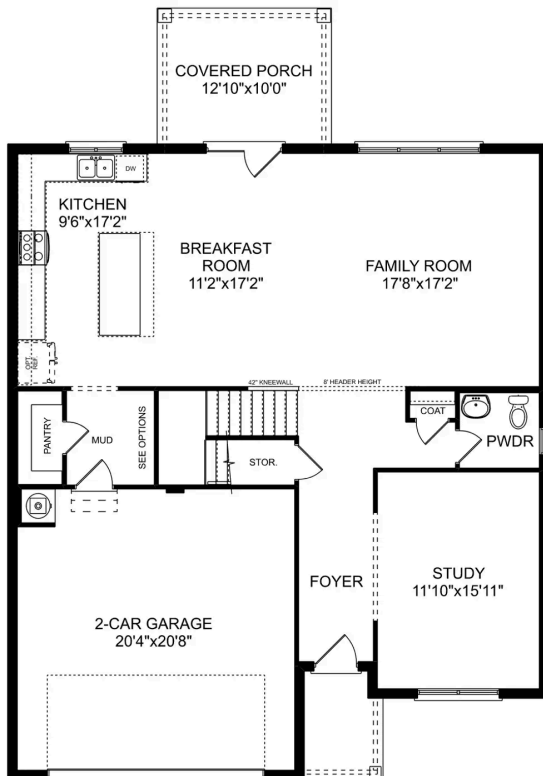


**BEDS**  
**4**

**BATHS**  
**3.5**

**SQ FT**  
**2,769**

**PARKING**  
**2**





## The Chelsea A

The Chelsea's windows fill the open floor plan with natural light, welcoming you into this charming home. The kitchen showcases ample counterspace, overlooking the breakfast and family room. A large study on the first floor offers potential, and the home's second floor features four bedrooms, each with plenty of closet space. The master bedroom is separate from the other bedrooms for added privacy, and the fourth bedroom features its own private bath.

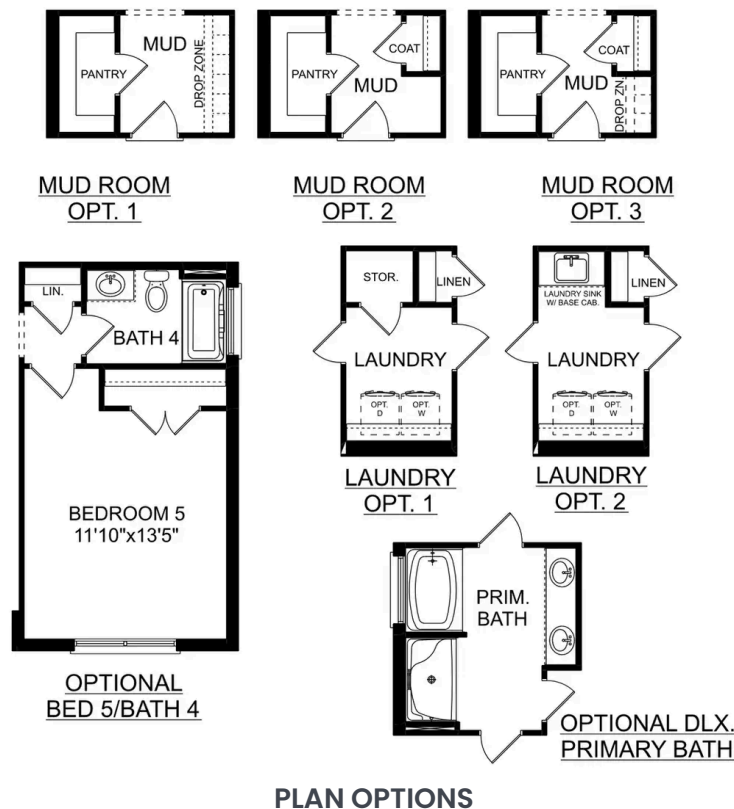
Make it your own with The Chelsea's flexible floor plan. Offerings vary by location, so please discuss your options with your community's agent.

BEDS  
**4**

BATHS  
**3.5**

SQ FT  
**2,769**

GARAGE  
**2**



# The Richmond D



## Description

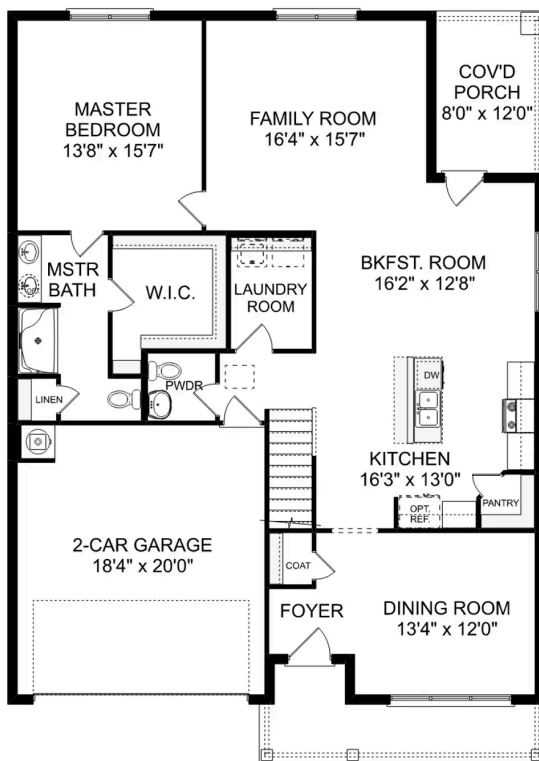
Starring five bedrooms and plenty of space, The Richmond features a sprawling layout! Enter the foyer and discover the elegant dining room to the left. The home quickly expands into an open-concept living space, as the charming kitchen overlooks the breakfast nook and family room.

**BEDS**  
**5**

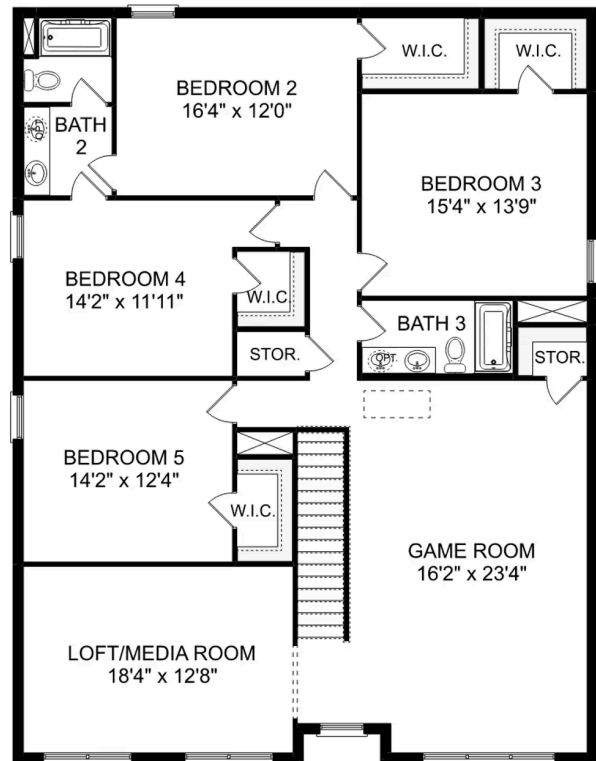
**BATHS**  
**3.5**

**SQ FT**  
**3,537**

**PARKING**  
**2**



**THE RICHMOND D MAIN FLOOR**



**THE RICHMOND D UPPER FLOOR**

## The Richmond D

Starring five bedrooms and plenty of space, The Richmond features a sprawling layout! Enter the foyer and discover the elegant dining room to the left. The home quickly expands into an open-concept living space, as the charming kitchen overlooks the breakfast nook and family room. Continue through to the Master Suite, featuring a huge walk-in closet.

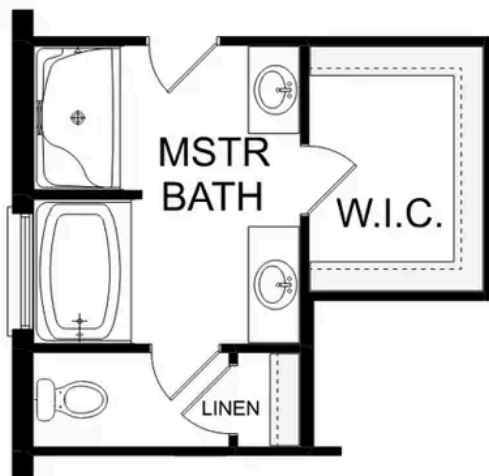
Upstairs, the plan features four more bedrooms, in addition to a game room and media room. Whether you're looking for a home theater or a home gym, The Richmond offers all the space you need.

BEDS  
**5**

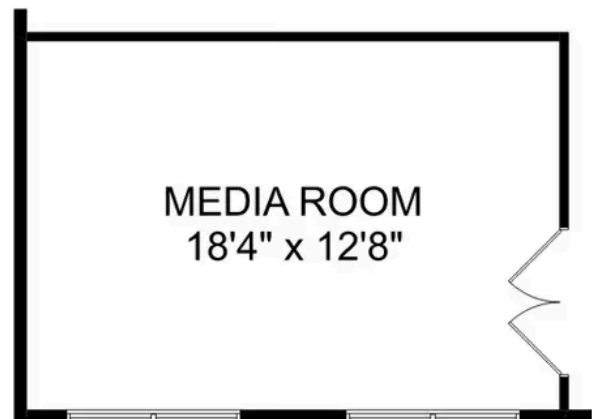
BATHS  
**3.5**

SQ FT  
**3,537**

GARAGE  
**2**



OPTIONAL DELUXE  
MASTER BATH



OPTIONAL  
MEDIA ROOM

### THE RICHMOND D OPTIONS