

# Kelly Preserve

Davidson Homes in Loganville, GA

Welcome to Kelly Preserve, a gated enclave located in Loganville, Georgia. This active adult (55+) community was expertly designed for those seeking an active and laid-back lifestyle.

Revel in our spacious ranch-style homes, complete with a clubhouse, pool, and fire pit, epitomizing luxury and comfort. You will love the convenience of included professional lawn care and being in a prime location. Downtown Snellville, Downtown Grayson, The Shoppes at Webb Gin and Scenic Square are all just a few minutes away and provide excellent shopping, dining, and entertainment options.

## Features

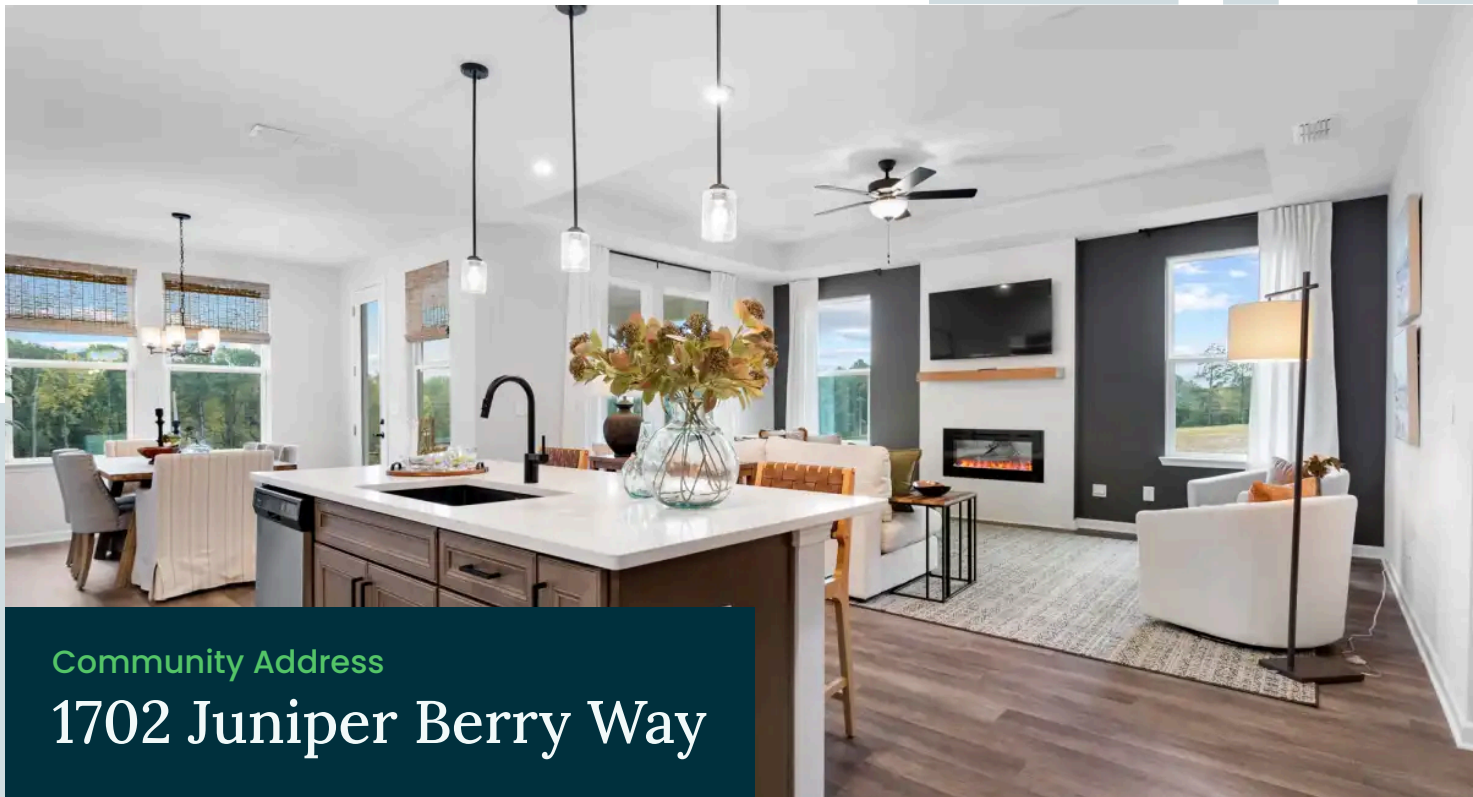
Active Adult Community  
Gated Enclave  
Pool and Clubhouse

## Local Schools

Magill Elementary  
Grace Snell Middle  
South Gwinnett High

## Utilities

Electric: Walton EMC  
Water: Gwinnett County  
Internet: Comcast



Community Address

1702 Juniper Berry Way

New Homes

04

Floor Plans

03

Homes from the

\$390s

Copyright 2024 Davidson Homes, Inc. | All Rights Reserved | Davidson Homes is a leading builder of quality new homes across the Southeast. Davidson Homes reserves the right to adjust items listed without prior notice or obligation. Such items may include, but are not limited to, options, included features and community information, pricing, amenities, square footage, terms or availability. Features, options, floor plans, elevations, colors, dimensions and photographs are for illustration purposes and may vary from homes built. Please see your community specialist for details. Equal housing lender. Last Updated 05/20/2024.





Kelly Preserve in Loganville, GA

## Quick Move-In Homes

Tiffany D. & Alecia T.  
Call (678) 578-5211

UPDATED HOMES  
05/20/2024 04

COMMUNITY ADDRESS  
1702 Juniper Berry Way



**\$429,072**

**2 Beds 2 Baths 1,836 Sq Ft**

1653 Juniper Berry Way | #5

The Dawson A Plan



**\$416,258**

**2 Beds 2 Baths 1,836 Sq Ft**

3414 Arrow Root Circle | #9

The Dawson B Plan



**\$424,673**

**3 Beds 2 Baths 2,001 Sq Ft**

1672 Juniper Berry Way | #45

The Edison C Plan



**\$431,765**

**3 Beds 2.5 Baths 2,200 Sq Ft**

1763 Juniper Berry Way | #81

The Glenwood D Plan





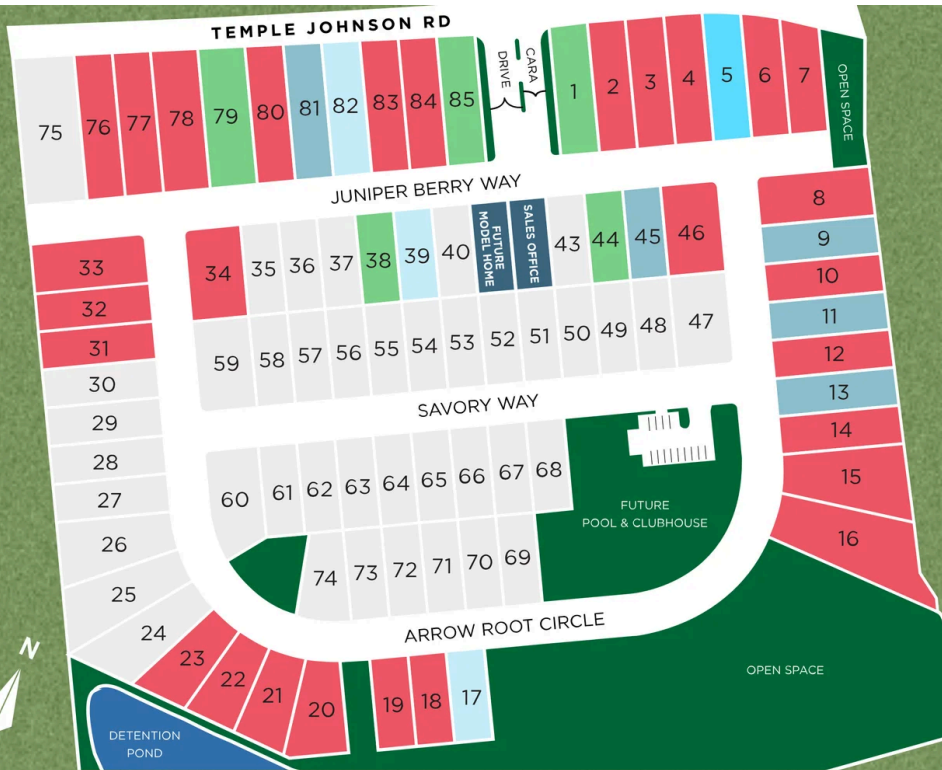


Kelly Preserve in Loganville, GA

# Community Homesite Map

Tiffany D. & Alecia T.

Call (678) 578-5211

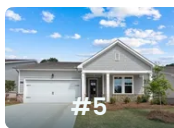


## KELLY PRESERVE

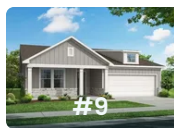
Loganville, Georgia

MOVE-IN READY QUICK MOVE-IN COMING SOON AVAILABLE SOLD

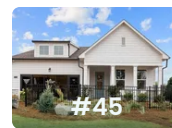
## Featured Homes for Sale



**The Dawson A**  
1653 Juniper Berry Way  
**\$429,072**



**The Dawson B**  
3414 Arrow Root Circle  
**\$416,258**



**The Edison C**  
1672 Juniper Berry Way  
**\$424,673**



**The Glenwood D**  
1763 Juniper Berry Way  
**\$431,765**



# The Dawson C



**BEDS**  
**2**

**BATHS**  
**2**

**SQ FT**  
**1,836**

**PARKING**  
**2**

## Exterior Options



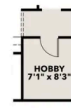
DAWSON FLOOR PLAN



OPT. FIREPLACE



OPT. LINEAR FIRE PLACE



OPT. HOBBY I/O  
GARAGE STORAGE



OPT. TECH



OPT. SCREENED PATIO



Kelly Preserve in Loganville, GA

Call (678) 578-5211  
DAVIDSONHOMES.COM

## The Edison C



BEDS  
**3**

BATHS  
**2**

SQ FT  
**2,001**

PARKING  
**2**

### Exterior Options



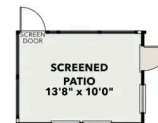
EDISON FLOOR PLAN



OPT. LINEAR FIRE PLACE



OPT. FIREPLACE



OPT. SCREENED PORCH







Kelly Preserve in Loganville, GA

Call (678) 578-5211  
DAVIDSONHOMES.COM

# The Glenwood D



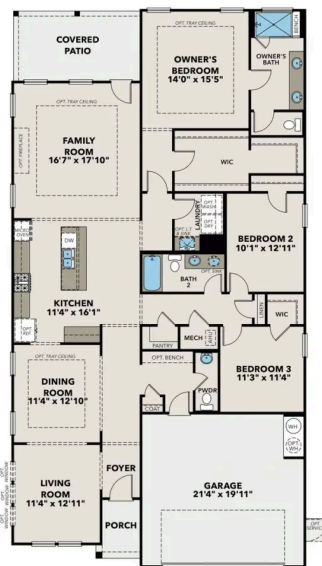
**BEDS**  
**3**

**BATHS**  
**2.5**

**SQ FT**  
**2,200**

**PARKING**  
**2**

## Exterior Options



GLENWOOD FLOOR PLAN



OPT. DELUXE BATH



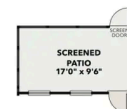
OPT. STUDY ILO LIVING



OPT. FIREPLACE



OPT. LINEAR FIREPLACE



OPT. SCREENED PATIO

