

Durham Farms

Davidson Homes in Harvest, AL

Welcome to Davidson Homes, a regional home builder in the beautiful city of Harvest, Alabama. Our focus is on creating functional and stylish homes in desirable communities like Durham Farms. This community offers full-brick ranch and brick-and-vinyl two-story homes with easy access to Wall Triana and Ardmore Highways.

Features

Open-Concept Floor Plans

Local Schools

Madison County School Di...
Harvest Elementary
Sparkman Middle
Sparkman High

Utilities

Electric: Huntsville Utilities
Gas: Huntsville Utilities
Water: Madison County W...



Community Address

106 Fall Meadow Dr

New Homes

04

Floor Plans

08

Homes from the

\$260s

Copyright 2024 Davidson Homes, Inc. | All Rights Reserved | Davidson Homes is a leading builder of quality new homes across the Southeast. Davidson Homes reserves the right to adjust items listed without prior notice or obligation. Such items may include, but are not limited to, options, included features and community information, pricing, amenities, square footage, terms or availability. Features, options, floor plans, elevations, colors, dimensions and photographs are for illustration purposes and may vary from homes built. Please see your community specialist for details. Equal housing lender. Last Updated 05/19/2024.





Durham Farms in Harvest, AL

Quick Move-In Homes

Winston Barton
Call (256) 612-5132

UPDATED HOMES
05/19/2024 04

COMMUNITY ADDRESS
106 Fall Meadow Dr



\$284,900

3 Beds 2 Baths 1,484 Sq Ft

184 Fall Meadow Drive | #75

The Asheville C Plan



\$315,160

4 Beds 3 Baths 1,964 Sq Ft

183 Fall Meadow Drive | #56

The Daphne D Plan

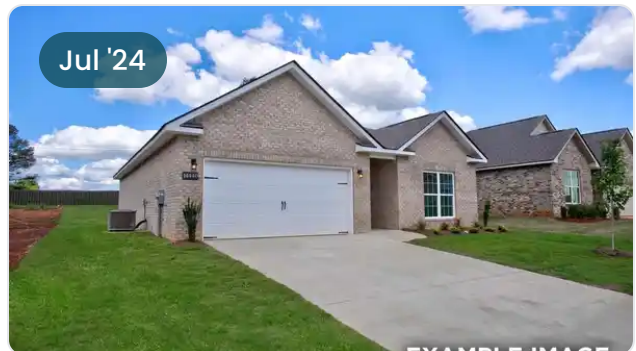


\$298,693

3 Beds 2 Baths 1,620 Sq Ft

181 Fall Meadow Drive | #57

The Franklin C Plan



\$284,273

3 Beds 2 Baths 1,484 Sq Ft

175 Fall Meadow Drive | #60

The Asheville C Plan

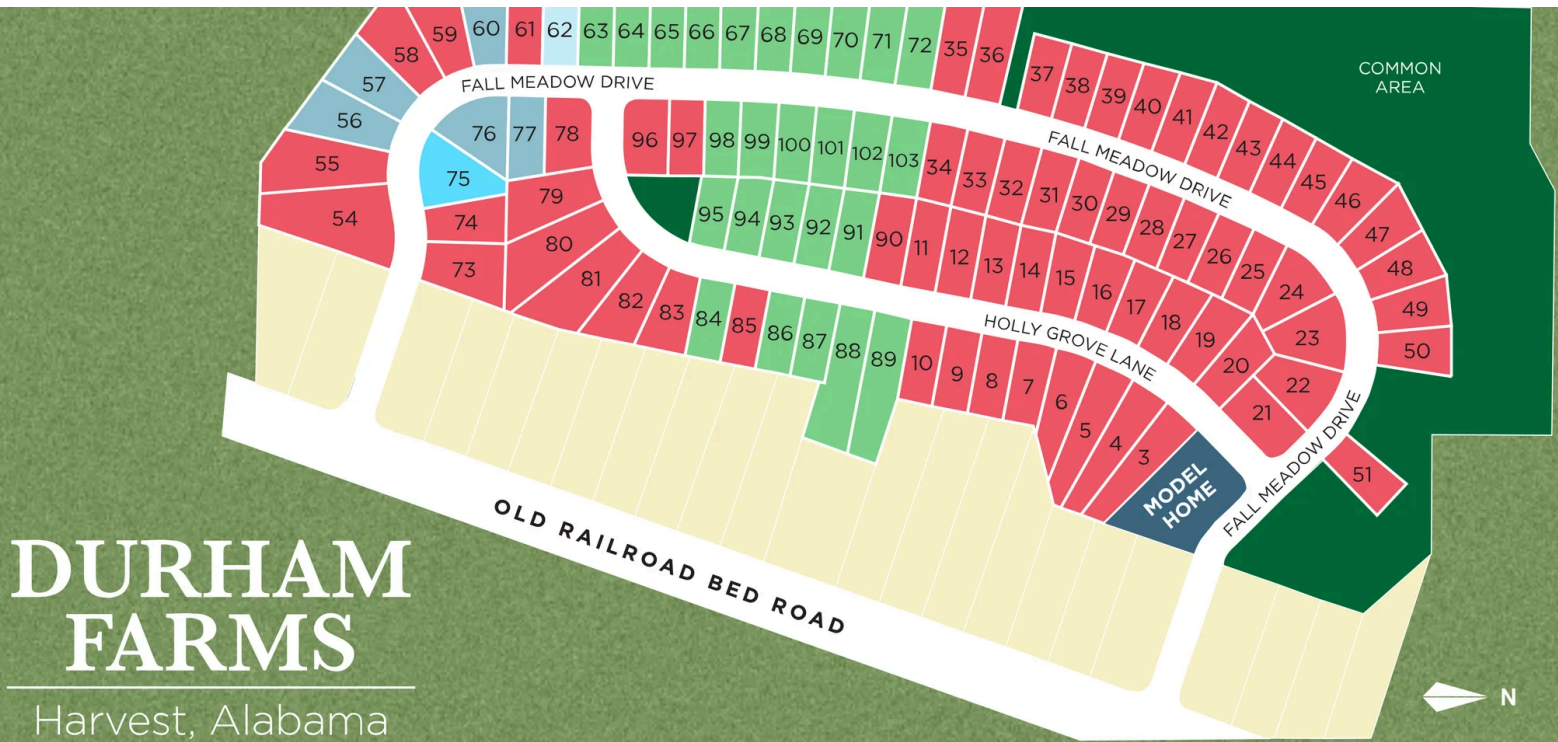




Durham Farms in Harvest, AL

Community Homesite Map


Winston Barton
Call (256) 612-5132



**DURHAM
FARMS**
Harvest, Alabama

MOVE-IN READY QUICK MOVE-IN COMING SOON AVAILABLE SOLD


Featured Homes for Sale



The Asheville C
184 Fall Meadow Drive
\$284,900



The Daphne D
183 Fall Meadow Drive
\$315,160



The Franklin C
181 Fall Meadow Drive
\$298,693



The Asheville C
175 Fall Meadow Drive
\$284,273



The Asheville

Exterior Options

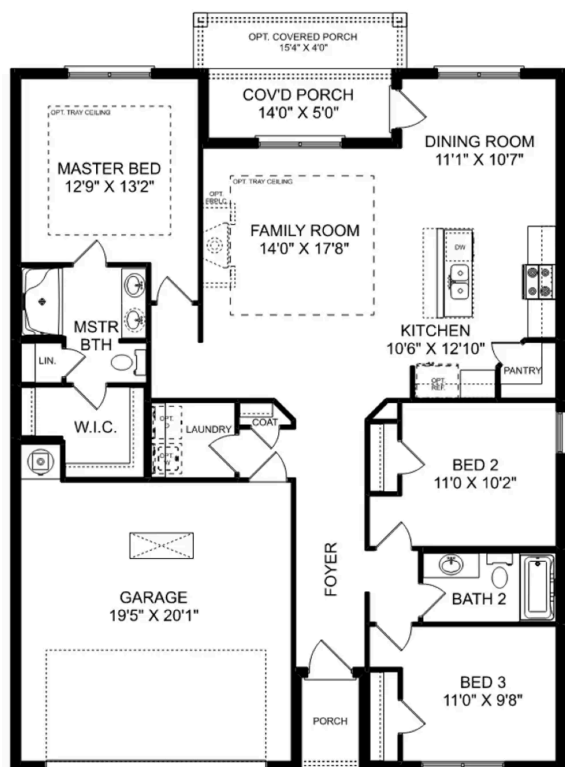


BEDS
3

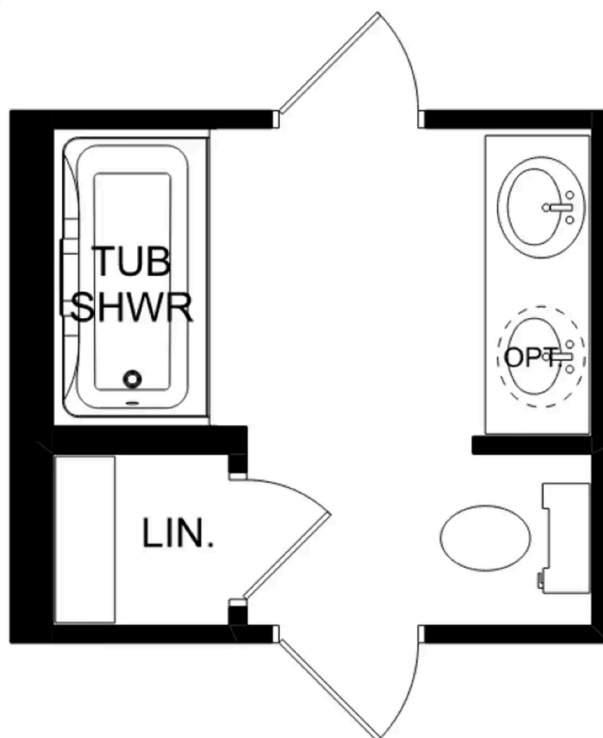
BATHS
2

SQ FT
1,484

PARKING
2



THE ASHEVILLE



THE ASHEVILLE OPTIONS

The Franklin

Exterior Options

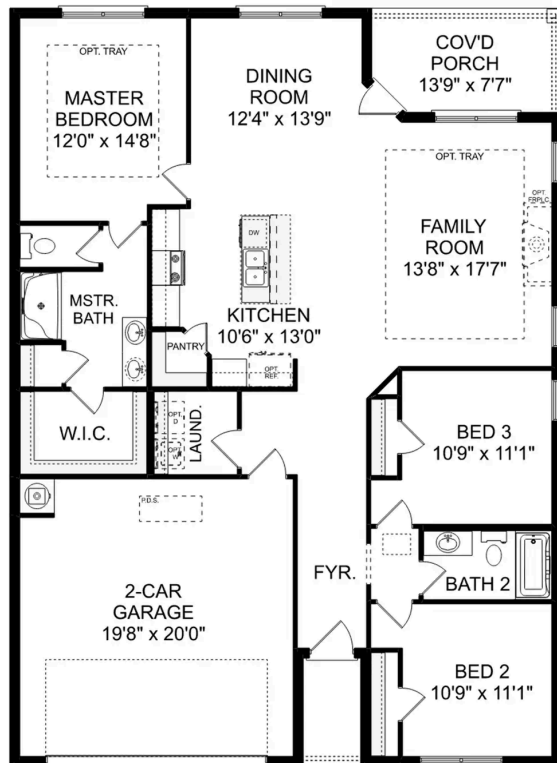


BEDS
3

BATHS
2

SQ FT
1,620

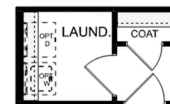
PARKING
2



THE FRANKLIN



OPT. DROP ZONE



OPT. COAT CLOSET



OPT. DELUXE MASTER BATH

THE FRANKLIN OPTIONS

The Daphne

Exterior Options

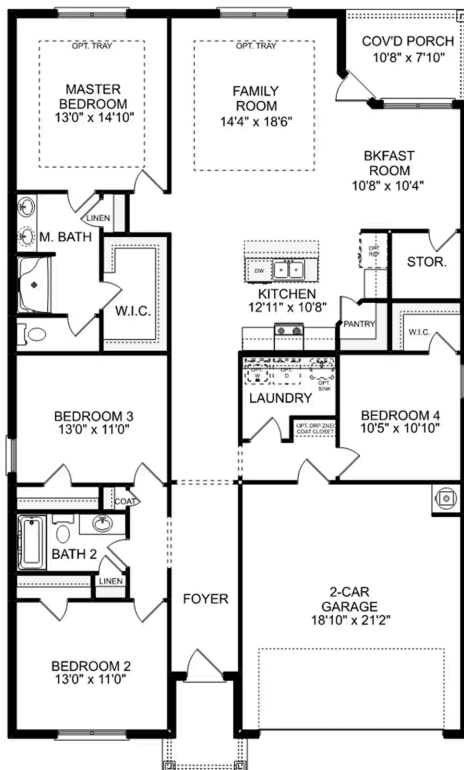


BEDS
4

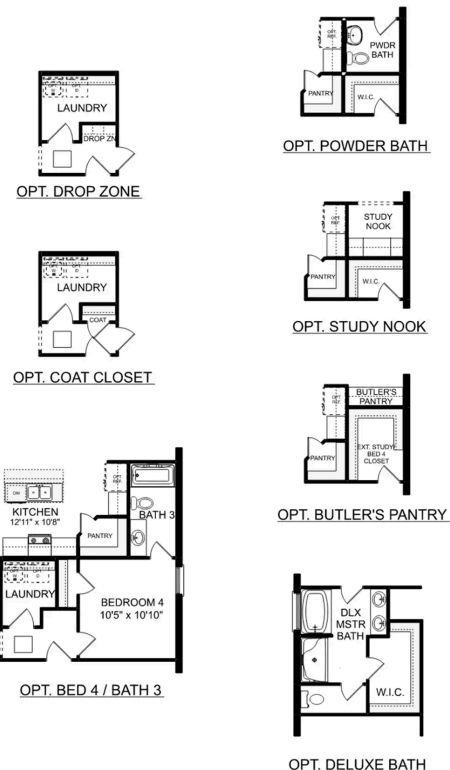
BATHS
2

SQ FT
1,964

PARKING
2



THE DAPHNE



THE DAPHNE OPTIONS



Durham Farms in Harvest, AL

Call (256) 612-5132
DAVIDSONHOMES.COM

The Everett

Exterior Options

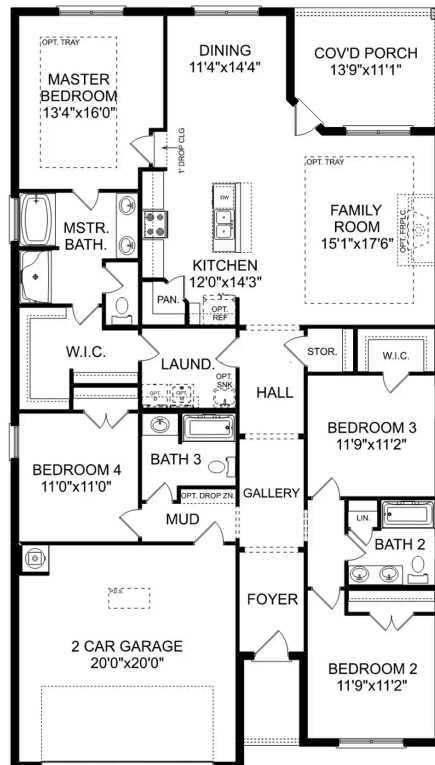


BEDS
4

BATHS
3

SQ FT
2,136

PARKING
2



THE EVERETT



The Shelby A

Exterior Options



BEDS
3

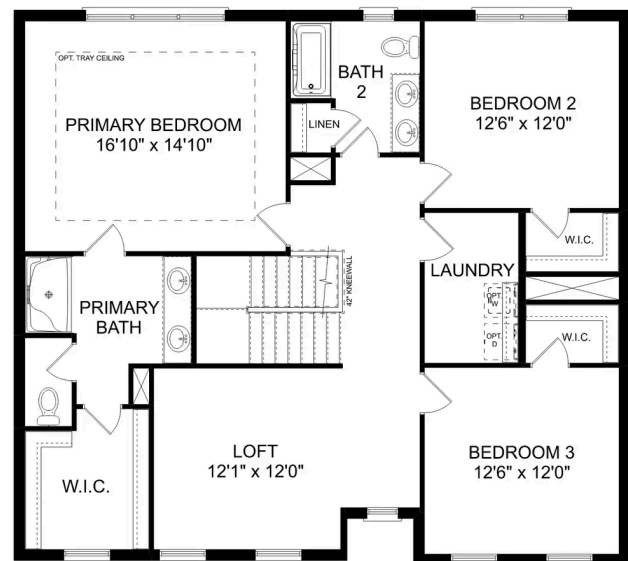
BATHS
2.5

SQ FT
2,452

PARKING
2



MAIN FLOOR



UPPER FLOOR

The Shelby A

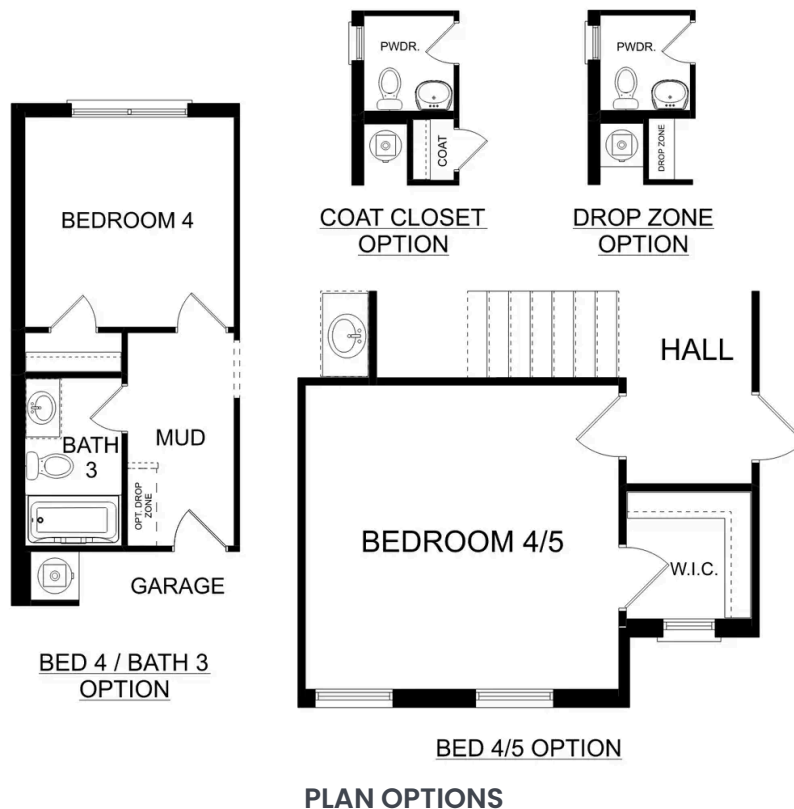
The Shelby welcomes you into a modern, open space, complete with a formal dining room and study. The kitchen overlooks an open-concept family room. The second floor features a spacious master bedroom with a large walk-in closet and master bath along with two additional bedrooms with ample walk-in closets of their own.

BEDS
3

BATHS
2.5

SQ FT
2,452

GARAGE
2



The Charleston D



Description

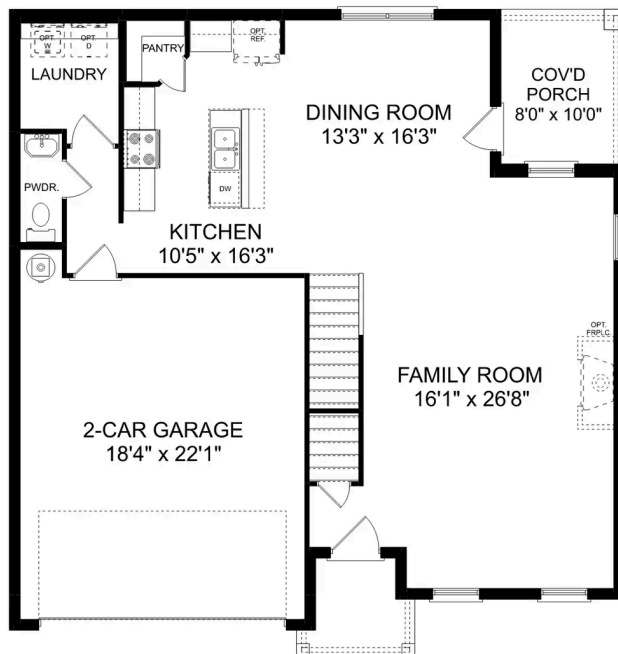
The sky's the limit with The Charleston's two-story layout and massive bonus room. Inside the home's brick exterior, the open-concept kitchen overlooks the huge family room. The Master Suite offers you a personal retreat – complete with large walk-in closet.

BEDS
4

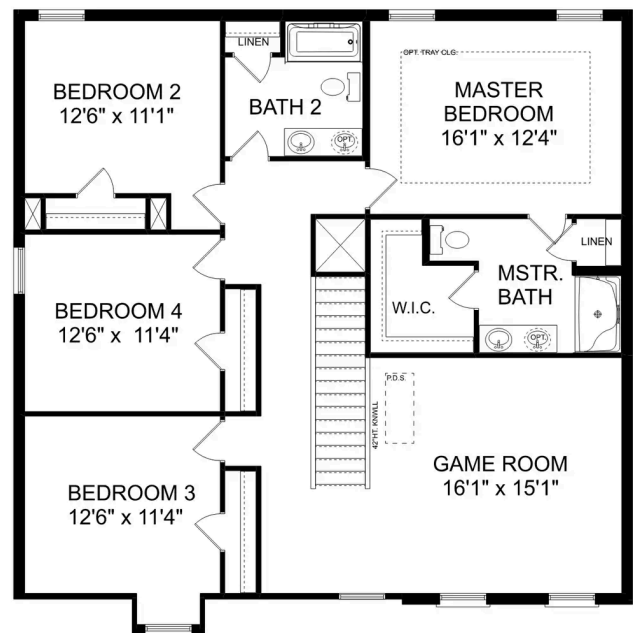
BATHS
2.5

SQ FT
2,505

PARKING
2



THE CHARLESTON D MAIN FLOOR



THE CHARLESTON D UPPER FLOOR

The Charleston D

The sky's the limit with The Charleston's two-story layout and massive bonus room. Inside the home's brick exterior, the open-concept kitchen overlooks the huge family room. The Master Suite offers you a personal retreat – complete with large walk-in closet. Whether you're looking for a game room or a fifth bedroom, the upstairs bonus room gives you all the flexibility you need. Make it your own with The Charleston's flexible floor plan! Just know that offerings vary by location, so please discuss our standard features and upgrade options with your community's agent.

BEDS
4

BATHS
2.5

SQ FT
2,505

GARAGE
2



THE CHARLESTON D OPTIONS

The Chelsea A

Exterior Options

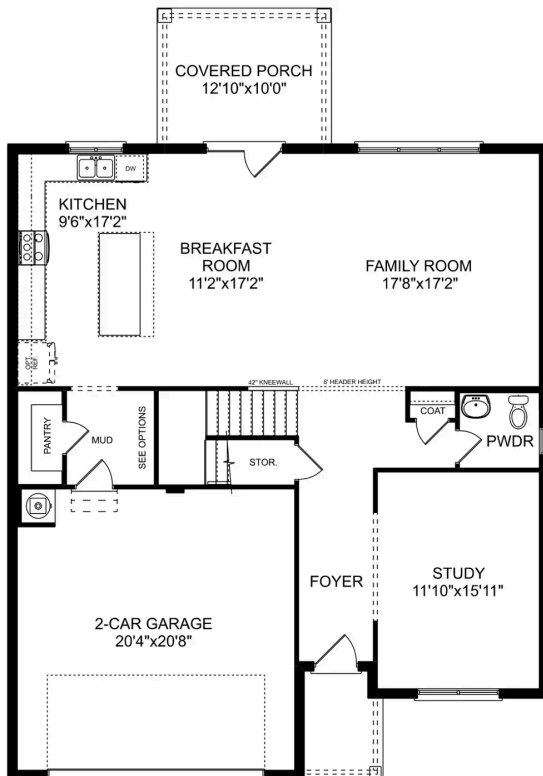


BEDS
4

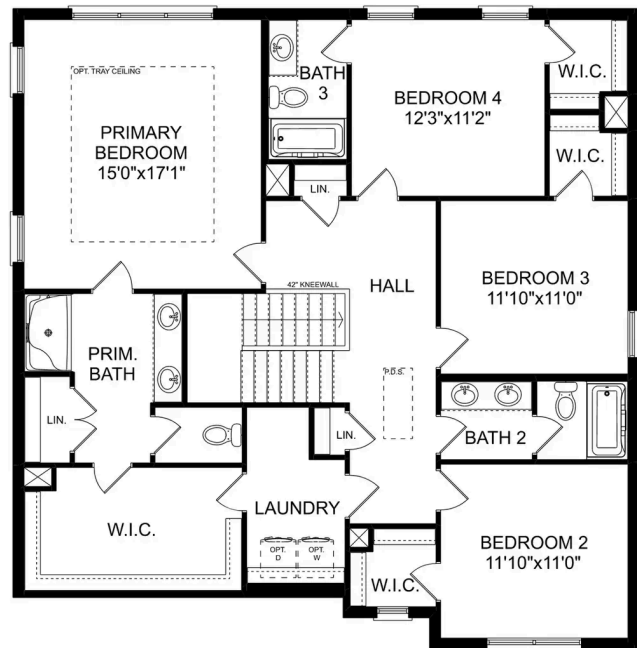
BATHS
3.5

SQ FT
2,769

PARKING
2



MAIN FLOOR



UPPER FLOOR

The Chelsea A

The Chelsea's windows fill the open floor plan with natural light, welcoming you into this charming home. The kitchen showcases ample counterspace, overlooking the breakfast and family room. A large study on the first floor offers potential, and the home's second floor features four bedrooms, each with plenty of closet space. The master bedroom is separate from the other bedrooms for added privacy, and the fourth bedroom features its own private bath.

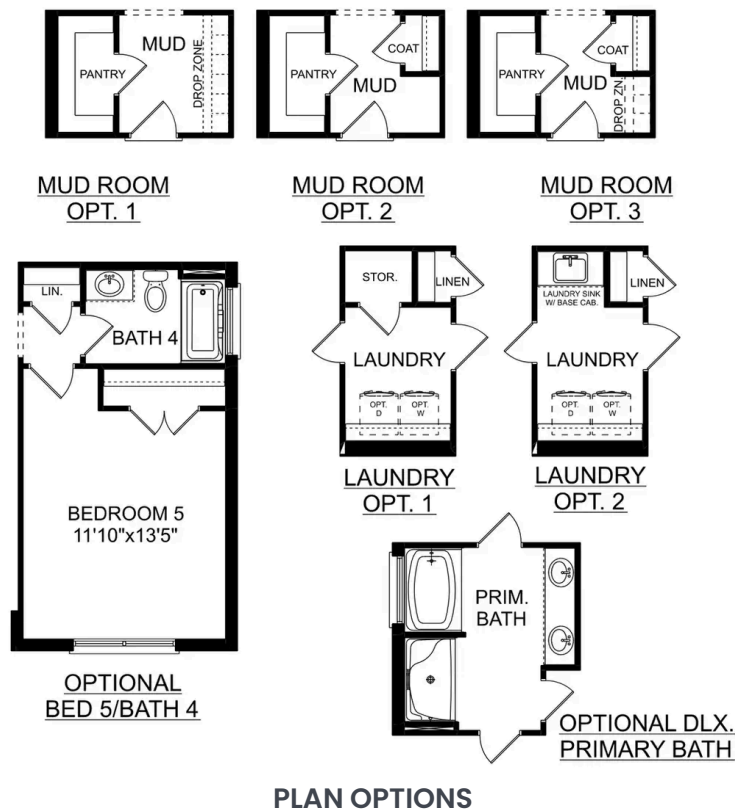
Make it your own with The Chelsea's flexible floor plan. Offerings vary by location, so please discuss your options with your community's agent.

BEDS
4

BATHS
3.5

SQ FT
2,769

GARAGE
2



The Richmond D



Description

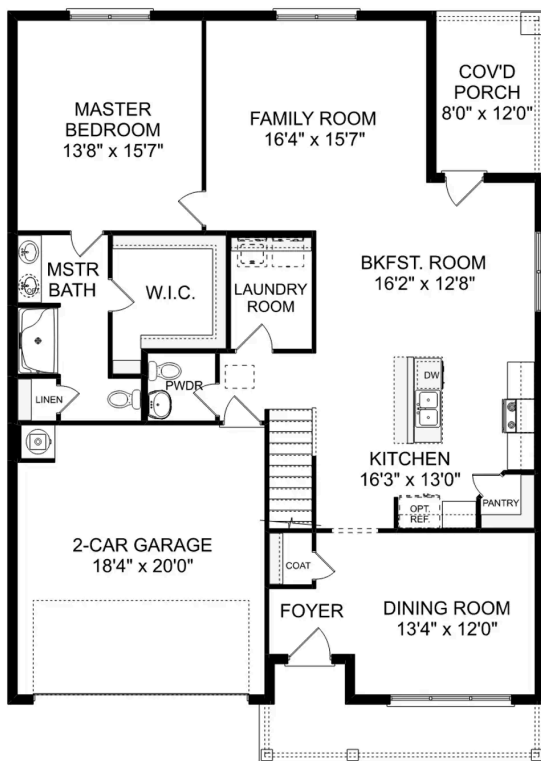
Starring five bedrooms and plenty of space, The Richmond features a sprawling layout! Enter the foyer and discover the elegant dining room to the left. The home quickly expands into an open-concept living space, as the charming kitchen overlooks the breakfast nook and family room.

BEDS
5

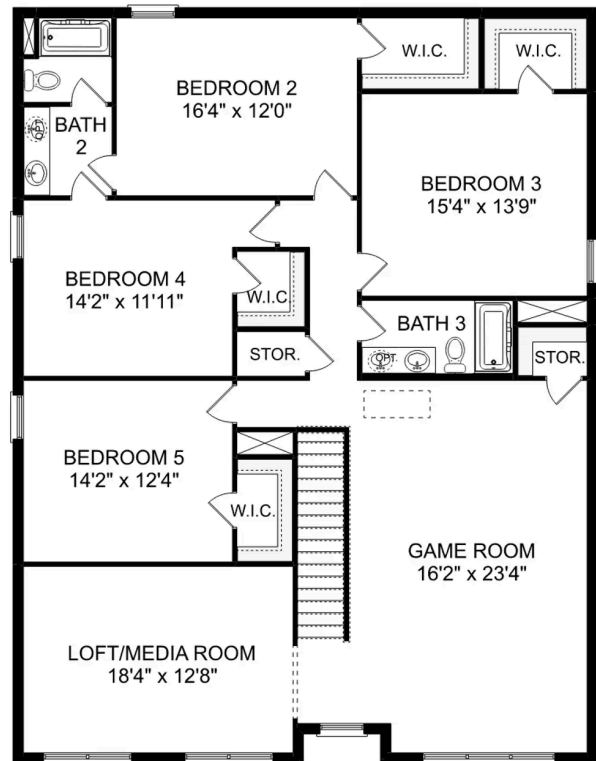
BATHS
3.5

SQ FT
3,537

PARKING
2



THE RICHMOND D MAIN FLOOR



THE RICHMOND D UPPER FLOOR

The Richmond D

Starring five bedrooms and plenty of space, The Richmond features a sprawling layout! Enter the foyer and discover the elegant dining room to the left. The home quickly expands into an open-concept living space, as the charming kitchen overlooks the breakfast nook and family room. Continue through to the Master Suite, featuring a huge walk-in closet.

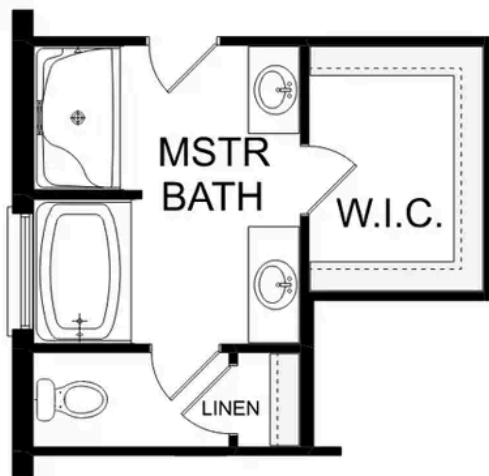
Upstairs, the plan features four more bedrooms, in addition to a game room and media room. Whether you're looking for a home theater or a home gym, The Richmond offers all the space you need.

BEDS
5

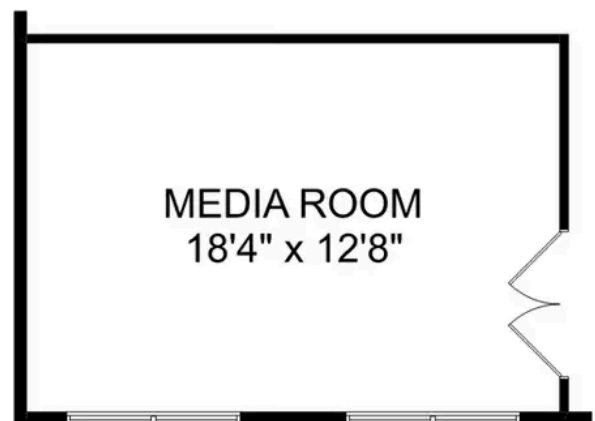
BATHS
3.5

SQ FT
3,537

GARAGE
2



OPTIONAL DELUXE
MASTER BATH



OPTIONAL
MEDIA ROOM

THE RICHMOND D OPTIONS