

North Ridge

Davidson Homes in Cullman, AL

Welcome to North Ridge! Our stately community in Cullman, AL offers single-family homes starting from around \$299,900. You can personalize your home when you build from the ground up or choose one of our homes currently under construction for a faster move-in.

Our community is conveniently located just minutes away from Downtown Cullman and the Warehouse District - perfect for boutique shopping and dining. Plus, with easy access to I-65, you can explore all the nearby attractions with ease. Spend your weekends fishing and tubing at nearby Smith Lake, one of the most enjoyable recreational spots in...

Features

Bonus Room Options
Highly-rated Schools
Close Proximity to I-65

Local Schools

Cullman City School District
Cullman City Primary
East Elementary
Cullman Middle
Cullman High

Utilities

Electric: Cullman Electric Co...
Gas: Jefferson County Gas
Water: Cullman Electric Co...



Community Address

2074 Austin Dr NE

New Homes

08

Floor Plans

11

Homes from the

\$300s

Copyright 2024 Davidson Homes, Inc. | All Rights Reserved | Davidson Homes is a leading builder of quality new homes across the Southeast. Davidson Homes reserves the right to adjust items listed without prior notice or obligation. Such items may include, but are not limited to, options, included features and community information, pricing, amenities, square footage, terms or availability. Features, options, floor plans, elevations, colors, dimensions and photographs are for illustration purposes and may vary from homes built. Please see your community specialist for details. Equal housing lender. Last Updated 05/19/2024.





North Ridge in Cullman, AL

Quick Move-In Homes

Michele Duke
Call (256) 269-7094



LIMITED TIME

Save **25%** on
Design Upgrades!

PLUS, ENJOY
\$5,000*
TO USE AS YOU CHOOSE!

LEARN MORE →

*See link for terms/conditions.

UPDATED
05/19/2024

HOMES
08

COMMUNITY ADDRESS
2074 Austin Dr NE



\$529,900

6 Beds 4 Baths 3,199 Sq Ft

2154 Misty Drive NE | #120

The Madison B Plan



\$429,900

5 Beds 4 Baths 3,079 Sq Ft

2120 Brandon Drive NE | #86

The Madison A Plan



\$449,524

4 Beds 4 Baths 3,222 Sq Ft

2134 Brandon Drive NE | #79

The Harrison Plan



\$421,974

4 Beds 3.5 Baths 2,904 Sq Ft

2132 Brandon Drive NE | #80

The Rockford Plan



\$449,049

5 Beds 4 Baths 3,222 Sq Ft

2130 Brandon Drive NE | #81

The Harrison Plan



\$386,428

4 Beds 3 Baths 2,470 Sq Ft

2136 Brandon Drive NE | #76

The Harrison Plan

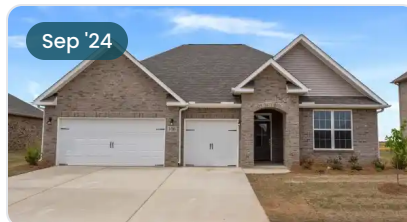


\$365,898

3 Beds 2.5 Baths 2,286 Sq Ft

2138 Brandon Drive NE | #77

The Rockford B Plan



\$385,393

4 Beds 3.5 Baths 2,678 Sq Ft

2140 Brandon Drive NE | #78

The Harrison B Plan

Copyright 2024 Davidson Homes, Inc. | All Rights Reserved | Davidson Homes is a leading builder of quality new homes across the Southeast. Davidson Homes reserves the right to adjust items listed without prior notice or obligation. Such items may include, but are not limited to, options, included features and community information, pricing, amenities, square footage, terms or availability. Features, options, floor plans, elevations, colors, dimensions and photographs are for illustration purposes and may vary from homes built. Please see your community specialist for details. Equal housing lender. MLS# 21857646. MLS# 21856860. MLS# 21857613. MLS# 21857618. MLS# 21857627. MLS# 21859481. MLS# 21859485. MLS# 21859488.





North Ridge in Cullman, AL

Community Homesite Map

Michele Duke
Call (256) 269-7094

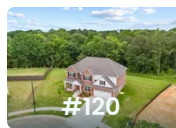


NORTH RIDGE

Cullman, Alabama

MOVE-IN READY QUICK MOVE-IN COMING SOON AVAILABLE SOLD

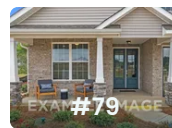
Featured Homes for Sale



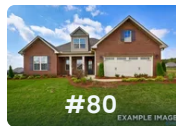
The Madison B
2154 Misty Drive NE
\$529,900



The Madison A
2120 Brandon Drive NE
\$429,900



The Harrison
2134 Brandon Drive NE
\$449,524



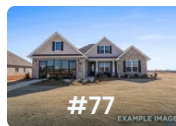
The Rockford
2132 Brandon Drive NE
\$421,974



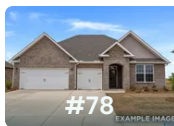
The Harrison
2130 Brandon Drive NE
\$449,049



The Harrison
2136 Brandon Drive NE
\$386,428



The Rockford B
2138 Brandon Drive NE
\$365,898



The Harrison B
2140 Brandon Drive NE
\$385,393

Copyright 2024 Davidson Homes, Inc. | All Rights Reserved | Davidson Homes is a leading builder of quality new homes across the Southeast. Davidson Homes reserves the right to adjust items listed without prior notice or obligation. Such items may include, but are not limited to, options, included features and community information, pricing, amenities, square footage, terms or availability. Features, options, floor plans, elevations, colors, dimensions and photographs are for illustration purposes and may vary from homes built. Please see your community specialist for details. Equal housing lender. MLS# 21857646. MLS# 21856860. MLS# 21857613. MLS# 21857618. MLS# 21857627. MLS# 21859481. MLS# 21859485. MLS# 21859488.



The Montgomery

Exterior Options

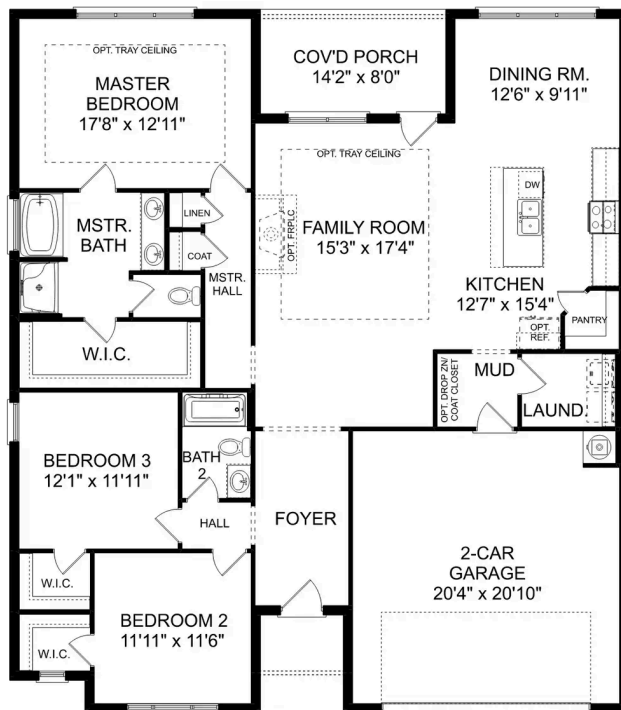


BEDS
3

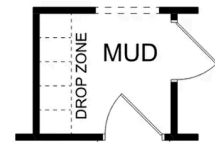
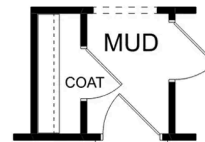
BATHS
2

SQ FT
1,912

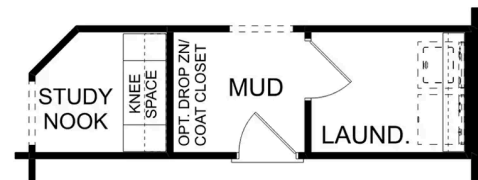
PARKING
2



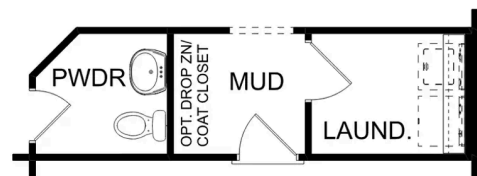
THE MONTGOMERY



OPT. COAT CLOSET OR DROP ZONE



OPT. STUDY NOOK



OPT. POWDER BATH

THE MONTGOMERY OPTIONS

The Montgomery with Bo...

Exterior Options

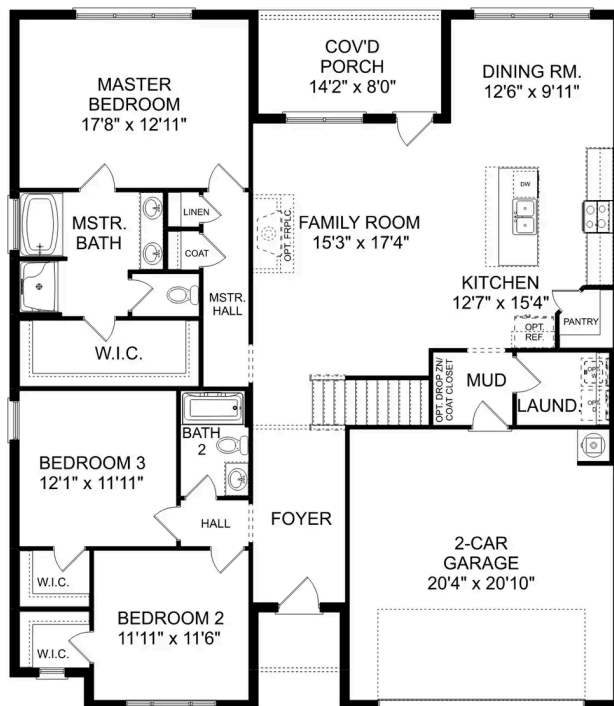
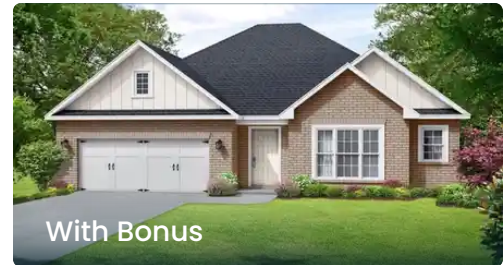


BEDS
3

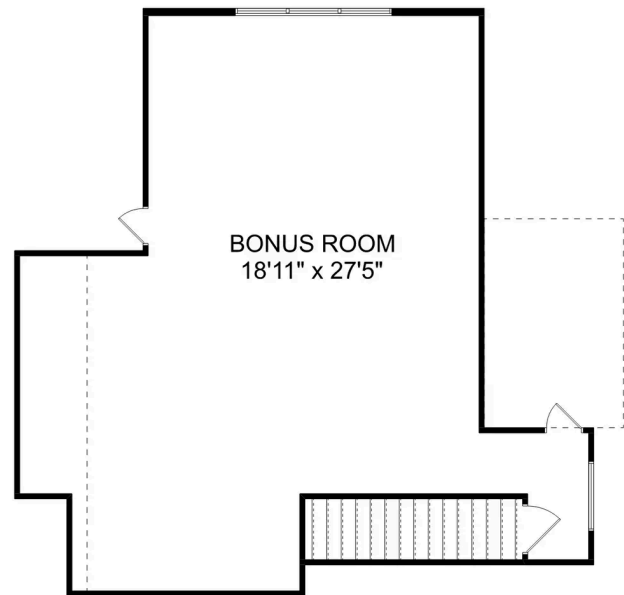
BATHS
2

SQ FT
2,684

PARKING
2



THE MONTGOMERY BONUS MAIN FLOOR



THE MONTGOMERY BONUS UPPER FLOOR

The Montgomery with Bonus

With modern touches like an open-concept, homeowner-centric layout, The Montgomery is one-level living at its finest. The kitchen showcases a huge island, corner pantry and stainless-steel appliances. The plan's open family room is perfect for entertaining guests, and the covered porch is easily accessible. Discover the plan's impressive Master Suite, complete with bright, inviting windows and a huge walk-in closet.

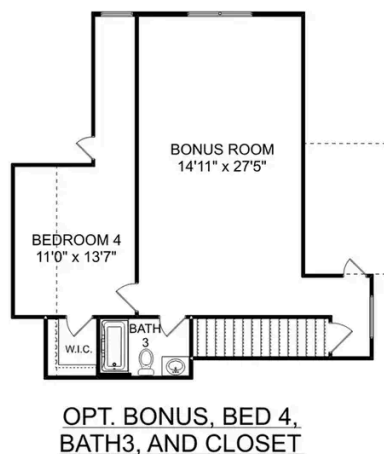
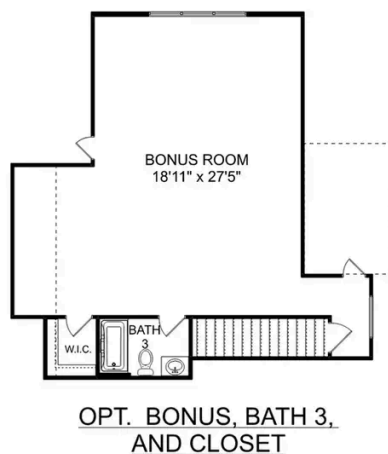
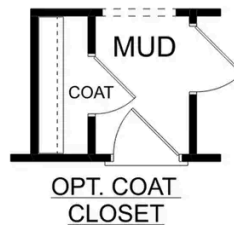
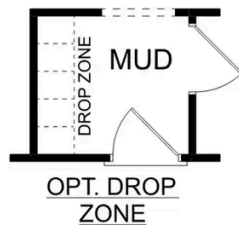
Make it your own with The Montgomery's flexible floor plan, featuring an optional bonus room, a covered porch and more! Just know that offerings vary by location, so please discuss our standard features and upgrade options with your community's agent.

BEDS
3

BATHS
2

SQ FT
2,684

GARAGE
2



THE MONTGOMERY BONUS OPTIONS

The Kirkland



Description

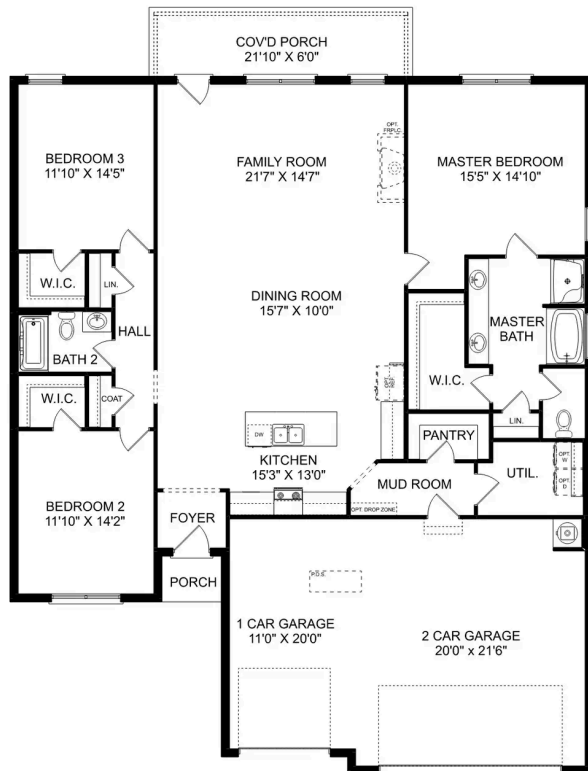
Behind the Kirkland's lovely, full-brick exterior lies a beautiful home. The foyer immediately opens up into a stunning, open-concept living space, combining the dining room, family room and kitchen.

BEDS
3

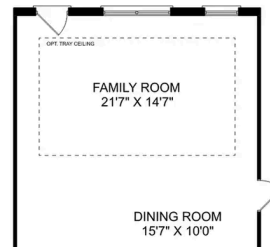
BATHS
2

SQ FT
2,076

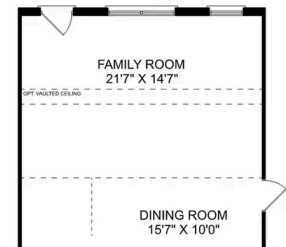
PARKING
3



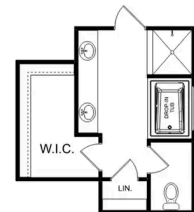
THE KIRKLAND



**OPTIONAL TRAY
CEILING**



**OPTIONAL VAULTED
CEILING**



**OPTIONAL LUXURY
MASTER BATH**

THE KIRKLAND OPTIONS

The Kirkland with Bonus



Description

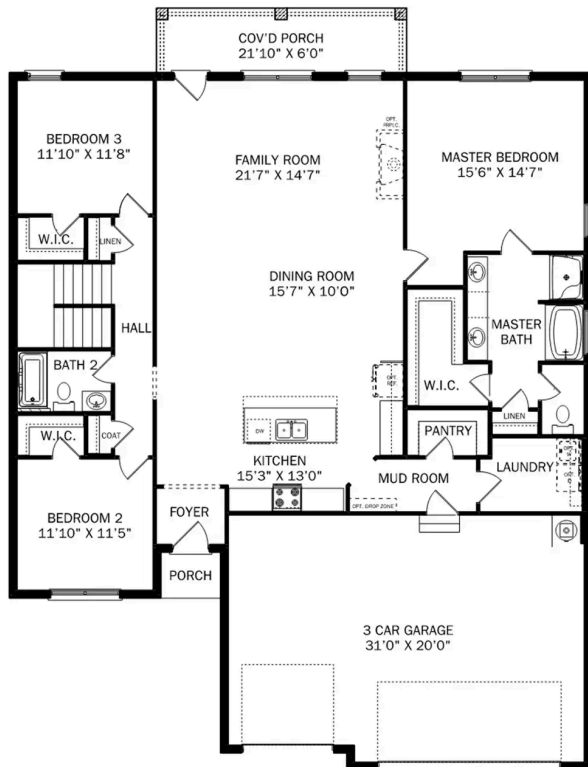
Behind the Kirkland's lovely, full-brick exterior lies a beautiful home. The foyer immediately opens up into a stunning, open-concept living space, combining the dining room, family room and kitchen.

BEDS
3

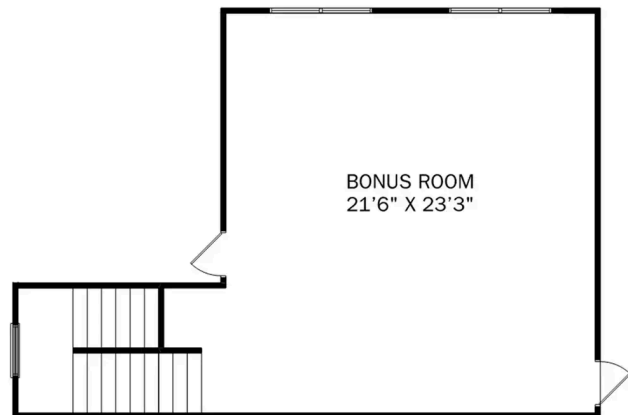
BATHS
2

SQ FT
2,767

PARKING
3



THE KIRKLAND BONUS MAIN FLOOR



THE KIRKLAND BONUS UPPER FLOOR

The Kirkland with Bonus

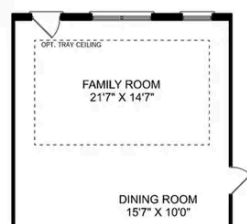
Behind the Kirkland's lovely, full-brick exterior lies a beautiful home. The foyer immediately opens up into a stunning, open-concept living space, combining the dining room, family room and kitchen. From the stunning island to its endless counterspace, the kitchen is perfect for entertaining, and the covered porch is always ready to take the party outside. The Master Suite features a lovely, bright bedroom and Master Bath, complete with shower, bathtub and walk-in closet.

BEDS
3

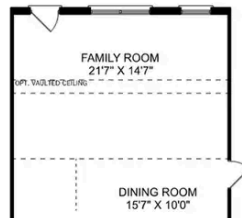
BATHS
2

SQ FT
2,767

GARAGE
3



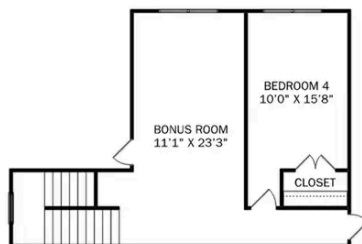
OPTIONAL TRAY
CEILING



OPTIONAL VAULTED
CEILING



OPTIONAL LUXURY
MASTER BATH



OPTIONAL BEDROOM 5



OPTIONAL BATH 3

THE KIRKLAND BONUS OPTIONS

The Rockford

Exterior Options

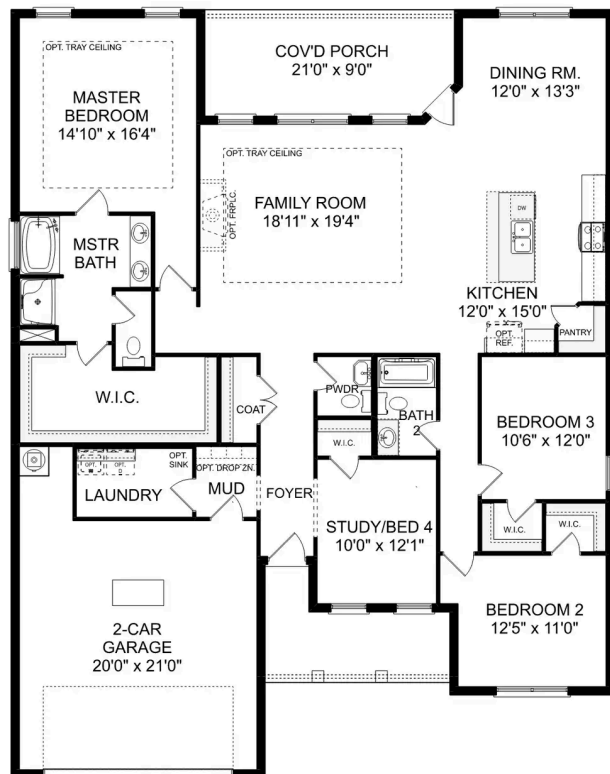


BEDS
3

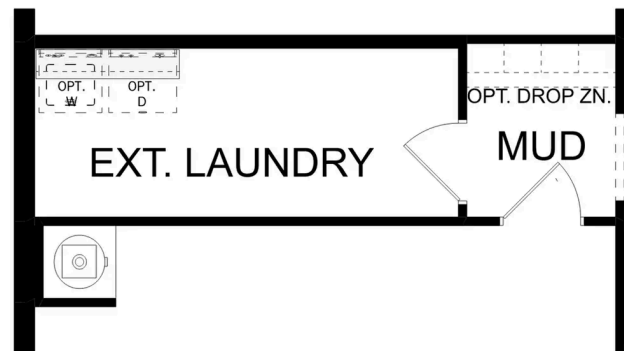
BATHS
2.5

SQ FT
2,286

PARKING
2



THE ROCKFORD



OPT. EXTENDED LAUNDRY
ADDS 30 HEATED S.F.

THE ROCKFORD OPTIONS

The Rockford with Bonus

Exterior Options



BEDS
3

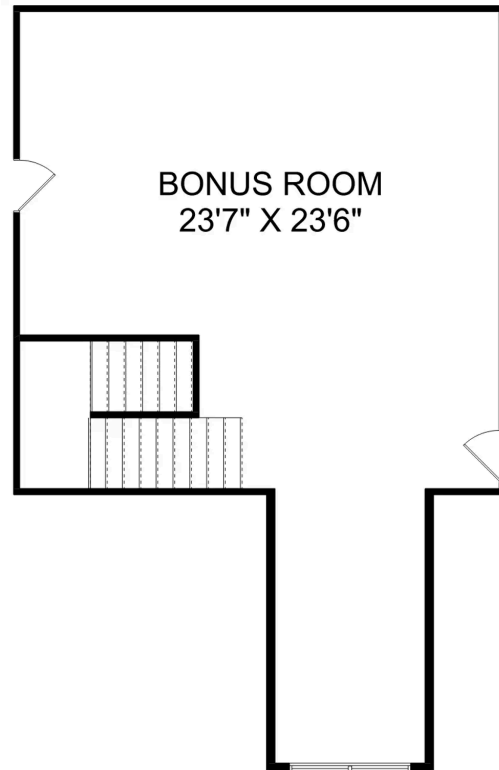
BATHS
2.5

SQ FT
2,904

PARKING
2



THE ROCKFORD BONUS MAIN FLOOR



THE ROCKFORD BONUS UPPER FLOOR

The Rockford with Bonus

With its charming, full-brick exterior, it's no wonder why The Rockford's our best-selling floor plan! A wall of windows floods the family room with natural light, and the kitchen invites you to cook – welcoming you with an oversized island, stainless-steel appliances and a large corner pantry. The isolated Master Suite features plenty of room and a massive walk-in closet.

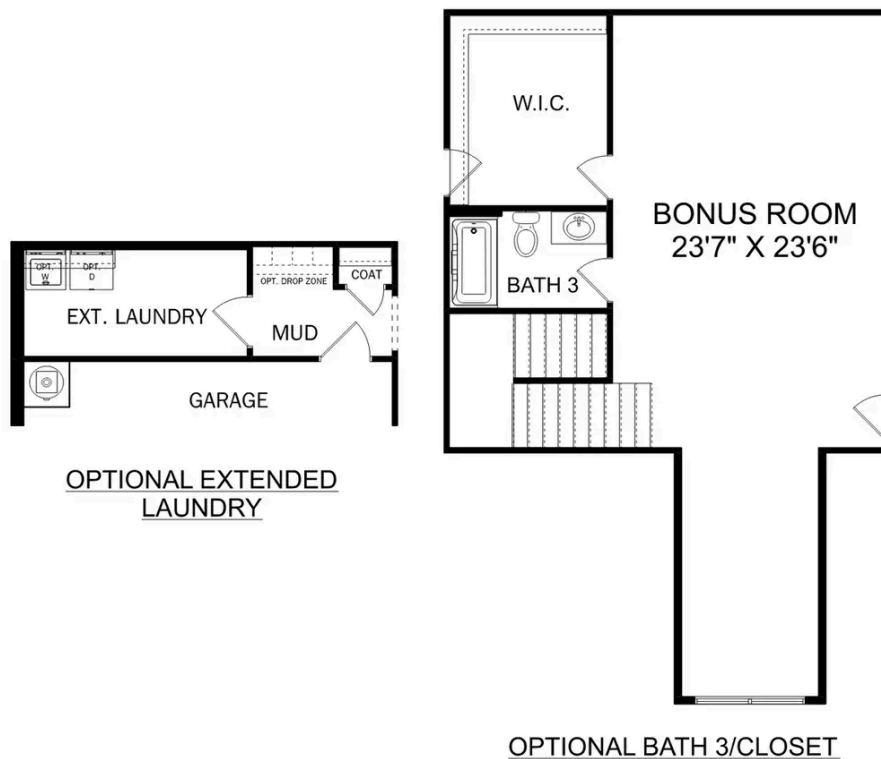
Make it your own with The Rockford's flexible floor plan, and consider replacing the home office with a fourth bedroom. It's your choice. Just know that offerings vary by location, so please discuss our standard features and upgrade options with your community's agent.

BEDS
3

BATHS
2.5

SQ FT
2,904

GARAGE
2



THE ROCKFORD OPTIONS

The Lanier



Description

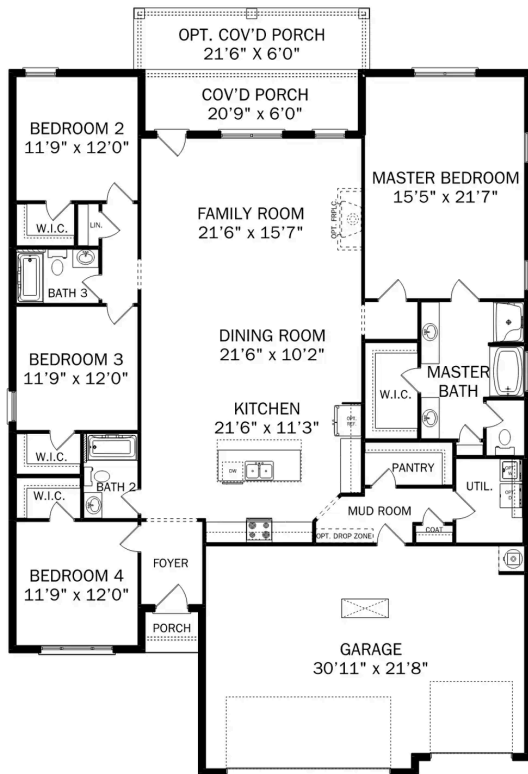
Within The Lanier's charming, full-brick exterior lies four bedrooms and plenty of space. The three-car garage leads into the home's mud room. The kitchen features a large pantry, double-sided island and more than enough counter space. Once there you'll discover the home's biggest feature – the huge, open-concept layout.

BEDS
4

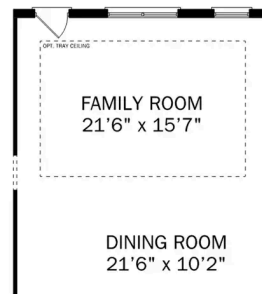
BATHS
3

SQ FT
2,411

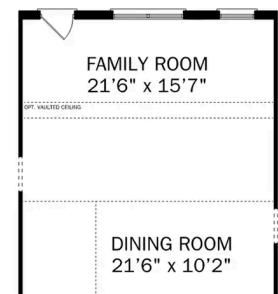
PARKING
3



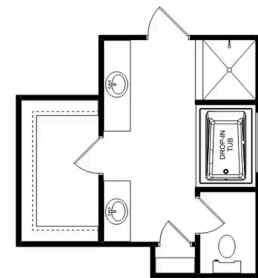
THE LANIER



**OPTIONAL TRAY
CEILING**



**OPTIONAL VAULTED
CEILING**



**OPTIONAL LUXURY
MASTER BATH**

THE LANIER OPTIONS

The Harrison

Exterior Options

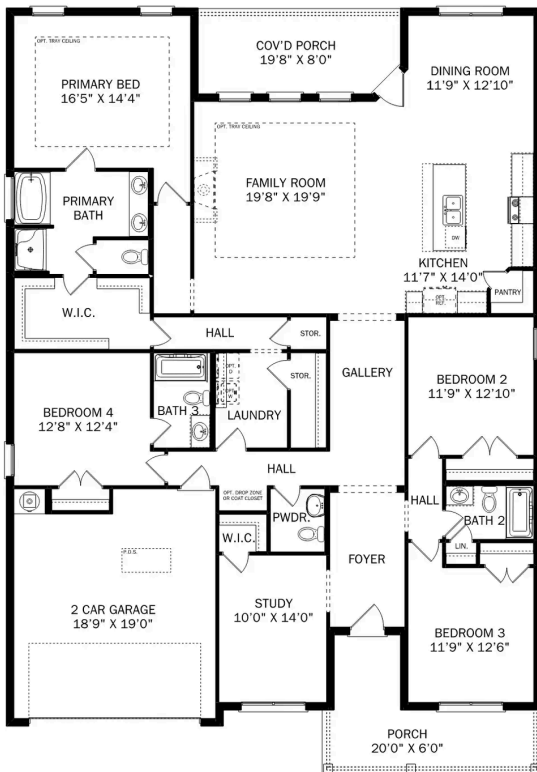


BEDS
4

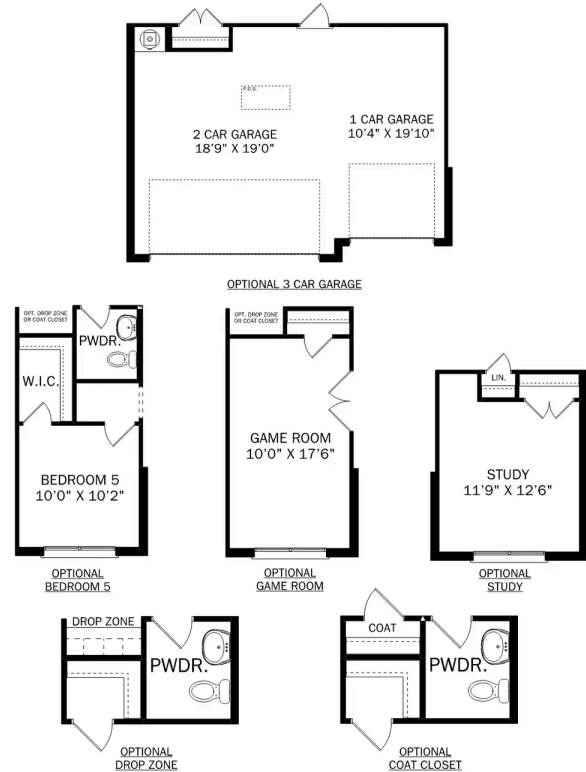
BATHS
3.5

SQ FT
2,678

PARKING
2



THE HARRISON



THE HARRISON OPTIONS

The Harrison with Bonus

Description



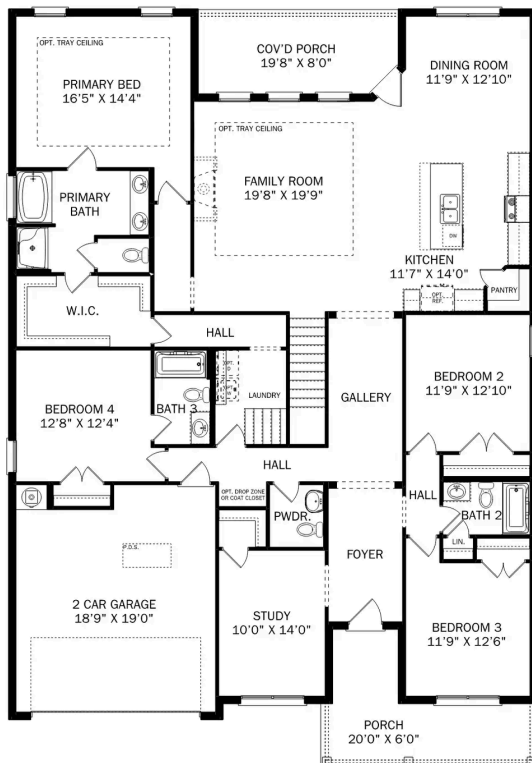
From its charming brick exterior to its open-concept kitchen/family room, The Harrison is perfect for entertaining. Its large kitchen island invites guests to pull up a chair, and its four spacious bedrooms ensure everyone has enough room.

BEDS
4

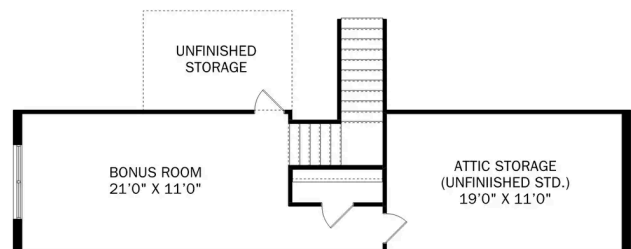
BATHS
3.5

SQ FT
2,992

PARKING
2



THE HARRISON BONUS MAIN FLOOR



THE HARRISON BONUS UPPER FLOOR

The Harrison with Bonus

From its charming brick exterior to its open-concept kitchen/family room, The Harrison is perfect for entertaining. Its large kitchen island invites guests to pull up a chair, and its four spacious bedrooms ensure everyone has enough room. The downstairs study offers a brief respite from the hustle and bustle, and the covered porch welcomes your family to grill and relax.

The Master Suite steals the show as its windows cast warm, natural light across the large room. The large walk-in closet is ready to handle your wardrobe, and the adjoining storage closet leads right into the laundry room – making laundry day significantly easier.

BEDS
4

BATHS
3.5

SQ FT
2,992

GARAGE
2



THE HARRISON BONUS OPTIONS

The Madison A

Exterior Options

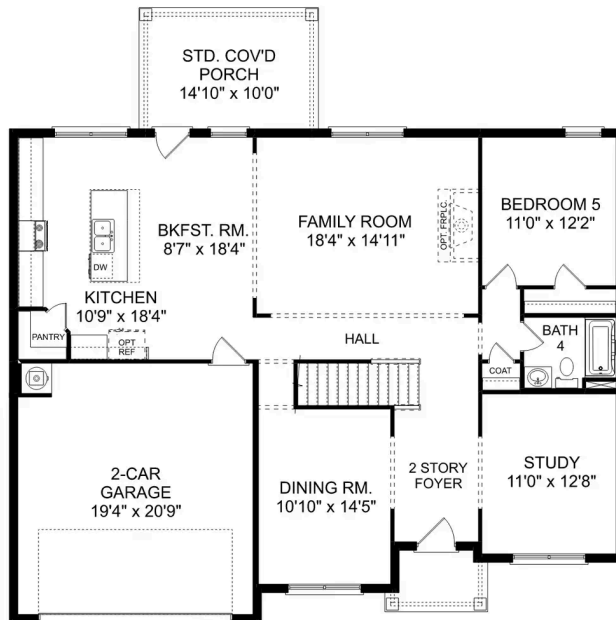


BEDS
5

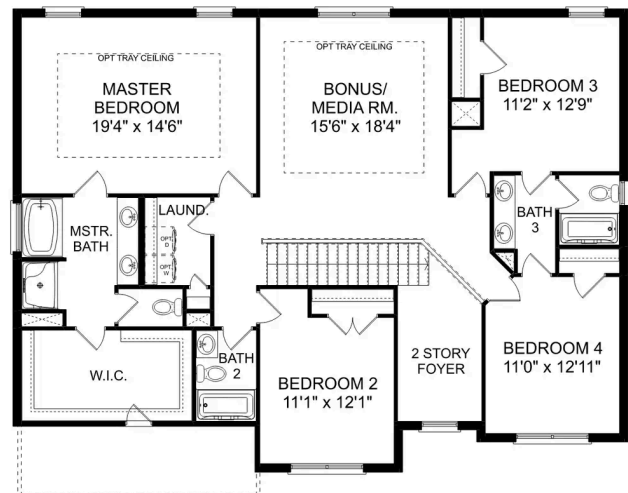
BATHS
4

SQ FT
3,199

PARKING
2



THE MADISON MAIN FLOOR



THE MADISON UPPER FLOOR

The Madison A

Behind the Madison's gorgeous brick exterior lies a massive layout, featuring five bedrooms, an elegant dining room and a welcoming study. From the designer kitchen's stainless-steel appliances to its oversized island, you'll want to make all your meals at home. The upstairs bonus room is perfect for family movie nights, and the Master Suite features a huge walk-in closet!

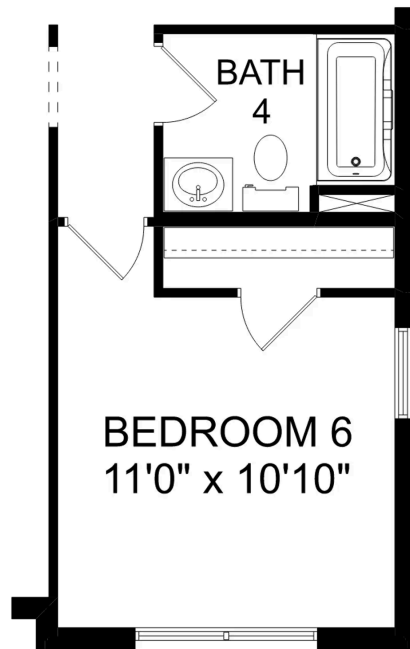
Make it your own with The Madison's flexible floor plan. Just know that offerings vary by location, so please discuss our standard features and upgrade options with your community's agent.

BEDS
5

BATHS
4

SQ FT
3,199

GARAGE
2



OPT. BEDROOM 6

THE MADISON OPTIONS



North Ridge in Cullman, AL

Call (256) 269-7094
DAVIDSONHOMES.COM

The Emory



Description

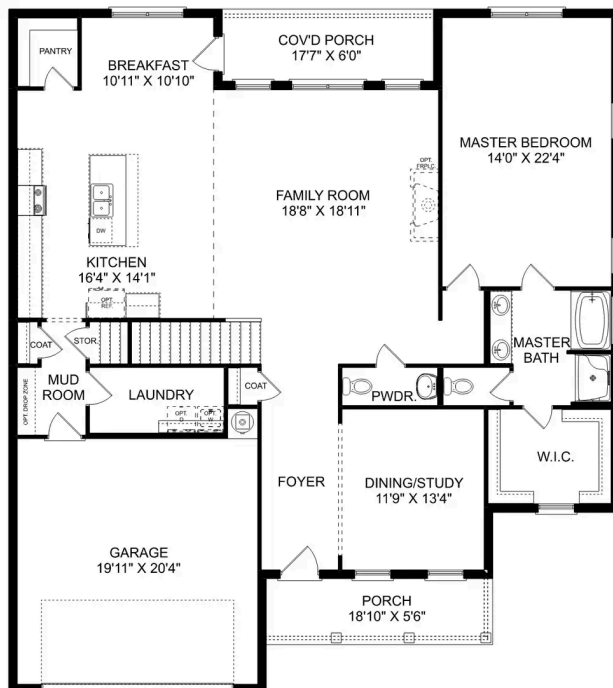
Enter The Emory, and you'll immediately discover why it's one of our most-loved plans. From its elegant dining room to its covered porch, this home has everything you need – and more! The designer kitchen features an oversized island, and the open-concept layout makes The Emory feel even larger.

BEDS
4

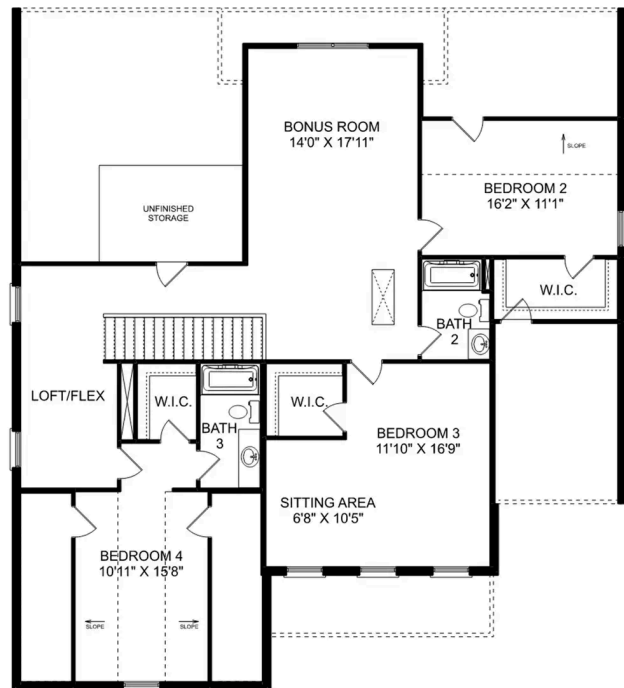
BATHS
3.5

SQ FT
3,563

PARKING
2



THE EMORY MAIN FLOOR



THE EMORY UPPER FLOOR

Copyright 2024 Davidson Homes, Inc. | All Rights Reserved | Davidson Homes is a leading builder of quality new homes across the Southeast. Davidson Homes reserves the right to adjust items listed without prior notice or obligation. Such items may include, but are not limited to, options, included features and community information, pricing, amenities, square footage, terms or availability. Features, options, floor plans, elevations, colors, dimensions and photographs are for illustration purposes and may vary from homes built. Please see your community specialist for details. Equal housing lender. Last updated 03/07/2023.

