

Glenmere

Davidson Homes in Knightdale, NC

Glenmere, located in the heart of the town of Knightdale, North Carolina, is an award-winning community that highlights small-town living with modern, stylish amenities and unparalleled convenience.

At the center of Glenmere's impressive offerings, residents enjoy a Jr. Olympic-sized pool that serves as a refreshing oasis during warm summer days. The cabana, complete with a cozy fireplace, is a perfect spot for community gatherings or relaxing evenings. For our younger residents, there's an open play area and a tot lot, fostering a friendly and active environment for all to flourish.

Features

Community Pool
Near Shopping and Dining

Local Schools

Wake County Schools
Knightdale Elementary
Neuse River Middle
Knightdale High



Community Address

720 Glenmere Drive

New Homes

05

Floor Plans

08

Homes from the

\$430s

Copyright 2024 Davidson Homes, Inc. | All Rights Reserved | Davidson Homes is a leading builder of quality new homes across the Southeast. Davidson Homes reserves the right to adjust items listed without prior notice or obligation. Such items may include, but are not limited to, options, included features and community information, pricing, amenities, square footage, terms or availability. Features, options, floor plans, elevations, colors, dimensions and photographs are for illustration purposes and may vary from homes built. Please see your community specialist for details. Equal housing lender. Last Updated 05/19/2024.





Glenmere in Knightdale, NC

Quick Move-In Homes

UPDATED
05/19/2024

HOMES
05

Carl Ellerson
Call (919) 646-6617

COMMUNITY ADDRESS
720 Glenmere Drive



\$528,000

3 Beds 3 Baths 2,736 Sq Ft

205 Poplar Summit Lane | #124

The Birch II E Plan



\$503,000

4 Beds 3 Baths 2,483 Sq Ft

636 Craftsman Ridge Trail | #255

The Willow G Plan



\$605,000

4 Beds 3.5 Baths 3,451 Sq Ft

222 Highland Ridge Lane | #139

The Magnolia B Plan



\$597,000

4 Beds 3.5 Baths 3,451 Sq Ft

225 Highland Ridge Lane | #13

The Magnolia A Plan



\$567,000

5 Beds 5 Baths 3,104 Sq Ft

649 Craftsman Ridge Trail | #302

The Hickory F Plan

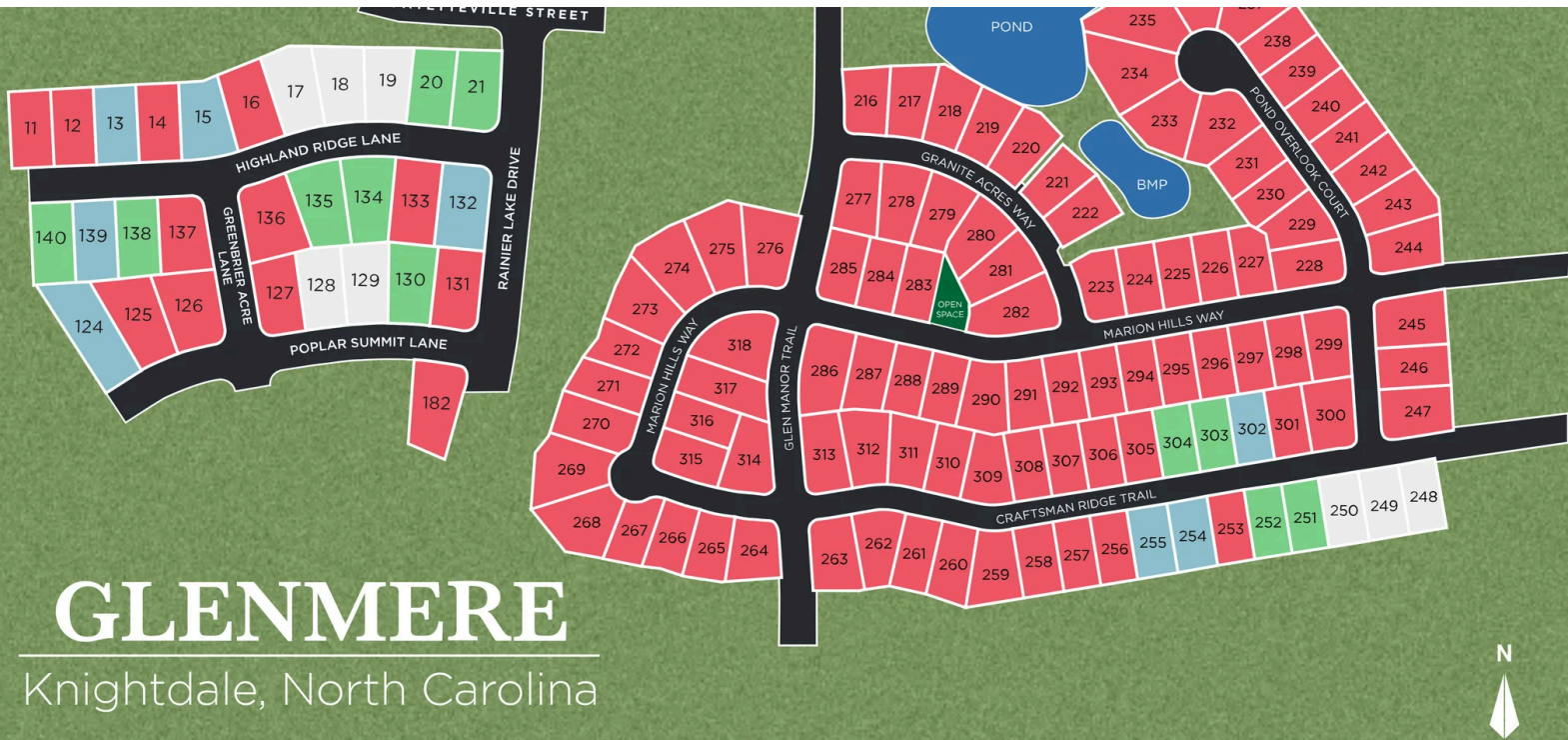




Glenmere in Knightdale, NC

Community Homesite Map

Carl Ellerson
Call (919) 646-6617



GLENMERE

Knightdale, North Carolina

QUICK MOVE-IN

COMING SOON

AVAILABLE

SOLD

Featured Homes for Sale



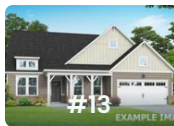
The Birch II E
205 Poplar Summit Lane
\$528,000



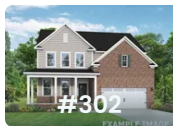
The Willow G
636 Craftsman Ridge Trail
\$503,000



The Magnolia B
222 Highland Ridge Lane
\$605,000



The Magnolia A
225 Highland Ridge Lane
\$597,000



The Hickory F
649 Craftsman Ridge Trail
\$567,000

Copyright 2024 Davidson Homes, Inc. | All Rights Reserved | Davidson Homes is a leading builder of quality new homes across the Southeast. Davidson Homes reserves the right to adjust items listed without prior notice or obligation. Such items may include, but are not limited to, options, included features and community information, pricing, amenities, square footage, terms or availability. Features, options, floor plans, elevations, colors, dimensions and photographs are for illustration purposes and may vary from homes built. Please see your community specialist for details. Equal housing lender.

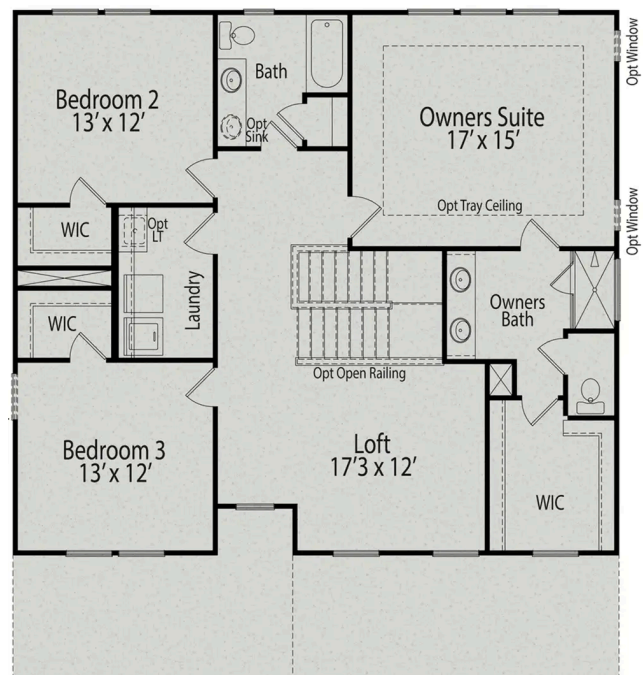
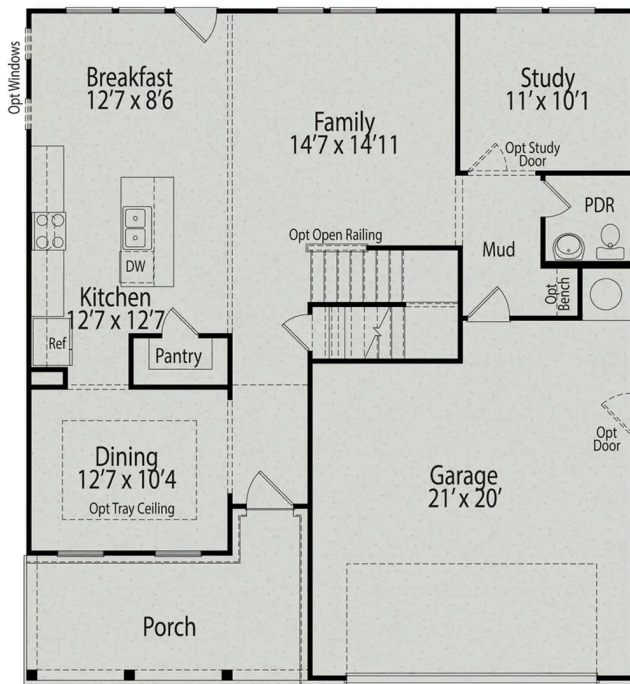


The Willow E

Exterior Options



| | | | |
|-------------|--------------|--------------|----------------|
| BEDS | BATHS | SQ FT | PARKING |
| 3 | 2.5 | 2,340 | 2 |



The Willow E

The Willow's impressive front porch welcomes you into a modern, open space, complete with a formal Dining Room and Study. The Kitchen overlooks an open-concept Family Room. The second floor features a spacious Owner's Suite with a large walk-in closet and Owner's Bath along with two additional Bedrooms with ample walk-ins closets of their own.

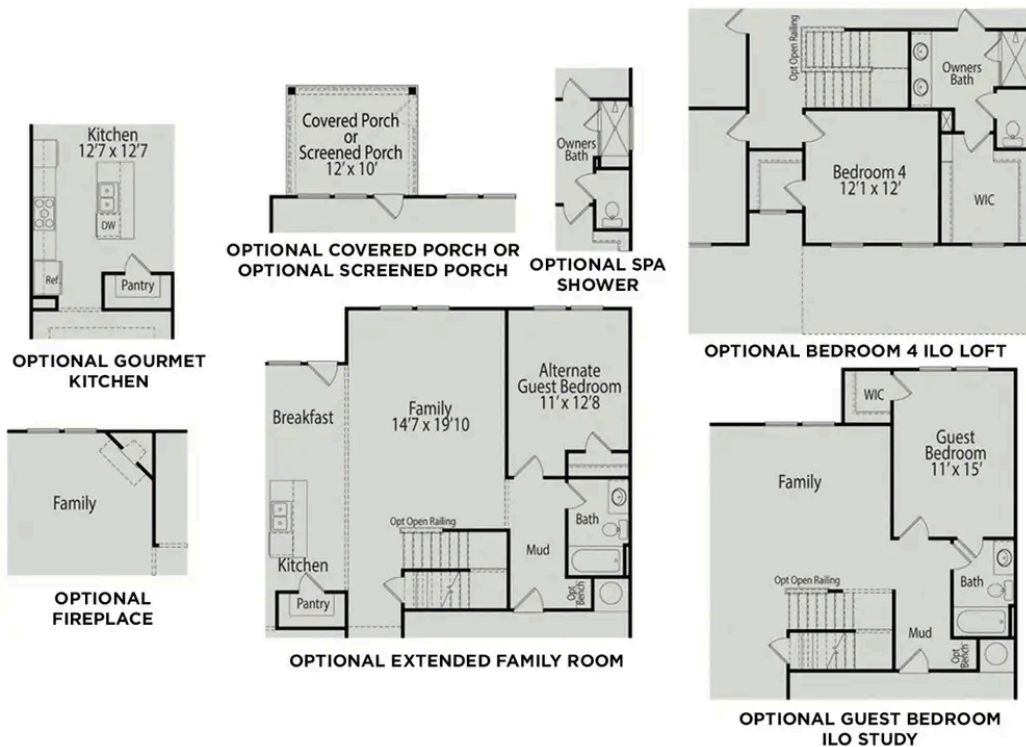
Make it your own with The Willow's flexible floor plan, showcasing an optional gourmet kitchen, a fireplace and more! Offerings vary by location, so please discuss your options with your community's agent.

BEDS
3

BATHS
2.5

SQ FT
2,340

GARAGE
2



OPTIONS

The Ash D

Exterior Options

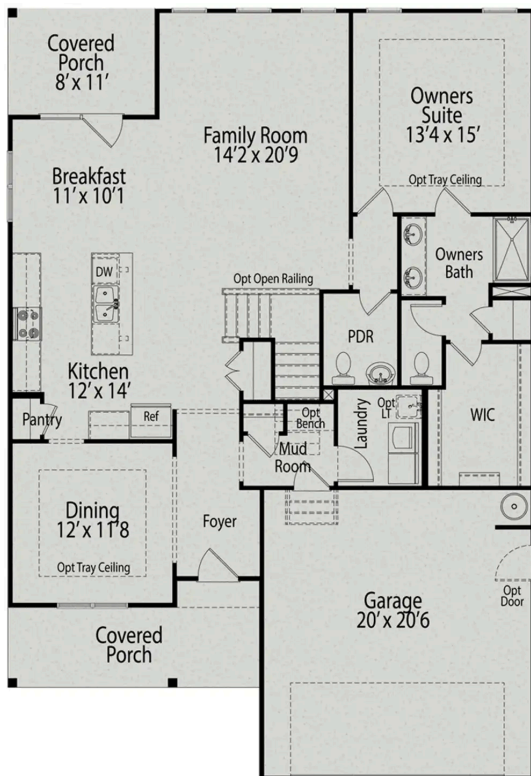


BEDS
3

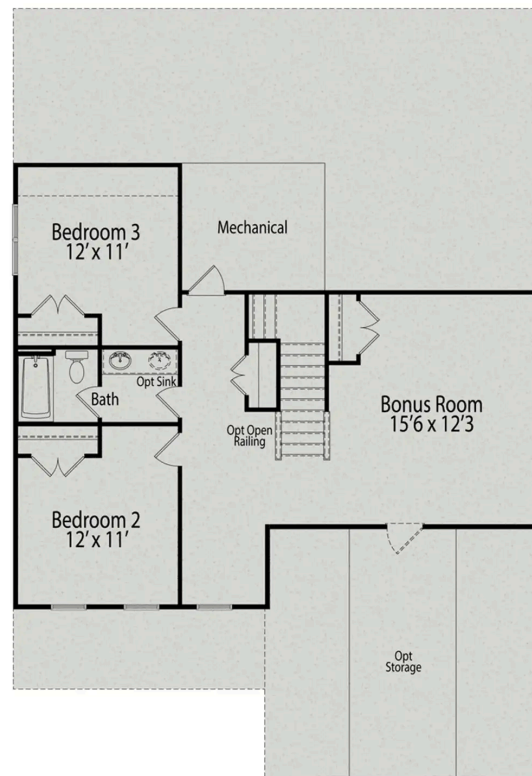
BATHS
2.5

SQ FT
2,400

PARKING
2



MAIN FLOOR PLAN



UPPER FLOOR PLAN

The Ash D

Inside The Ash's handsome exterior lies a coveted, open floor plan. The Foyer welcomes guests past an elegant Dining Room and into a stunning Family Room. The rear Porch offers a calm respite, and the first floor Owner's Suite highlights a massive walk-in closet. On the second floor, the plan offers two additional bedrooms and a generous Bonus Room – perfect for game nights.

Make it your own with The Ash's flexible floor plan, showcasing an optional fireplace, a fourth bedroom option and more! Offerings vary by location, so please discuss your options with your community's agent.

BEDS
3

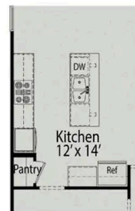
BATHS
2.5

SQ FT
2,400

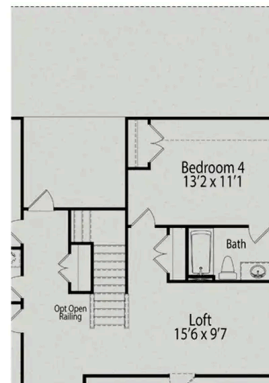
GARAGE
2



OPTIONAL SPA SHOWER



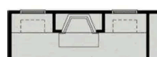
OPTIONAL GOURMET KITCHEN



OPTIONAL BEDROOM 4 WITH BATH



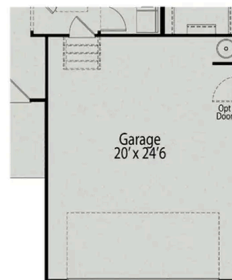
OPTIONAL EXTENDED COVERED PORCH
OR OPTIONAL SCREENED PORCH



OPTIONAL INSET
FIREPLACE



OPTIONAL
FIREPLACE



OPTIONAL 4' GARAGE
EXTENSION

PLAN OPTIONS

The Chestnut D

Exterior Options



BEDS
3

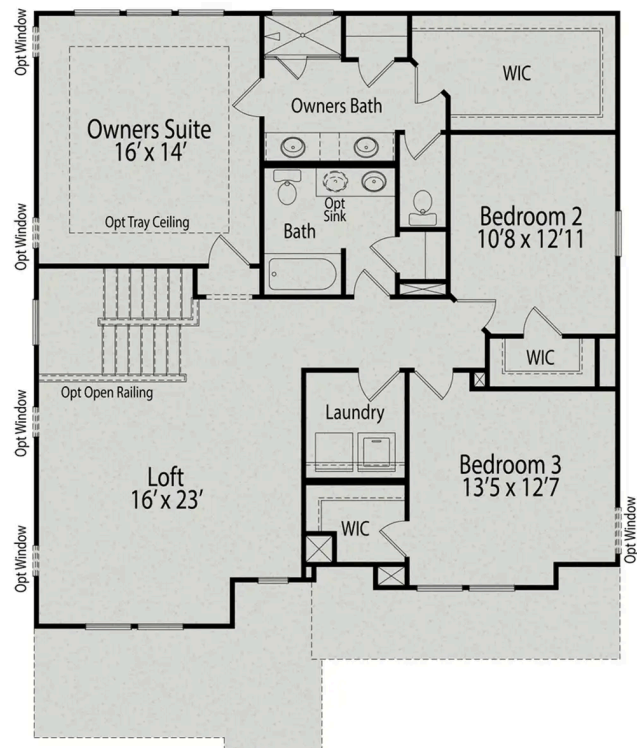
BATHS
2.5

SQ FT
2,505

PARKING
2



MAIN FLOOR PLAN



UPPER FLOOR PLAN

The Chestnut D

From its spacious porch to its front columns, The Chestnut introduces its open floor plan with a stunning exterior. Inside, the light-filled kitchen with large pantry overlooks an open-concept living/dining space. Upstairs, the isolated Owner's Suite is complete with an impressive walk-in closet and Owner's Bath. The Chestnut also features a first floor Study, a second floor Loft and a pair of additional bedrooms with their own generous walk-in closets.

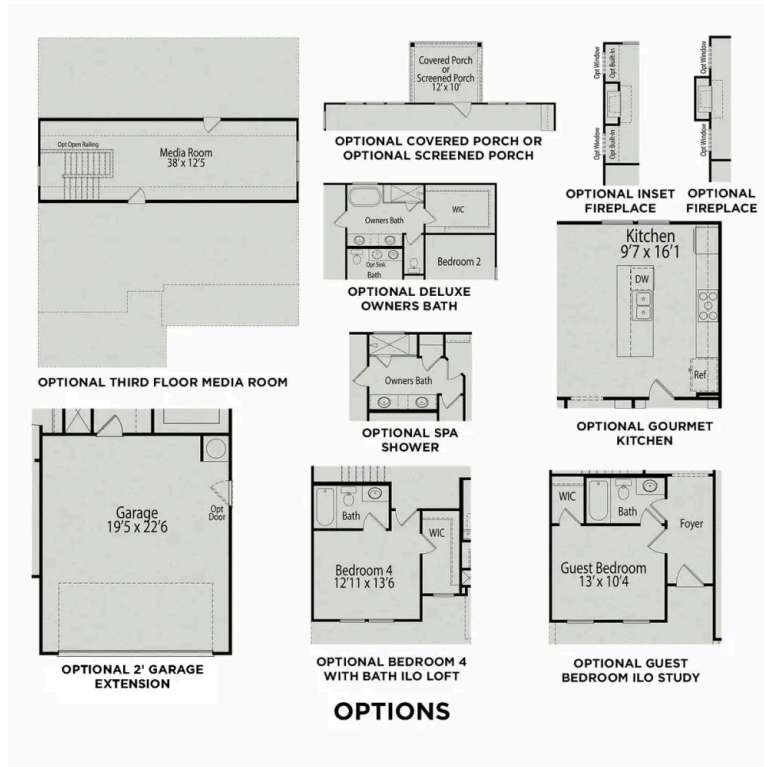
Make it your own with The Chestnut's flexible floor plan, featuring an optional gourmet kitchen, up to five bedrooms and more! Offerings vary by location, so please discuss your options with your community's agent.

BEDS
3

BATHS
2.5

SQ FT
2,505

GARAGE
2



PLAN OPTIONS

The Hemlock D

Exterior Options

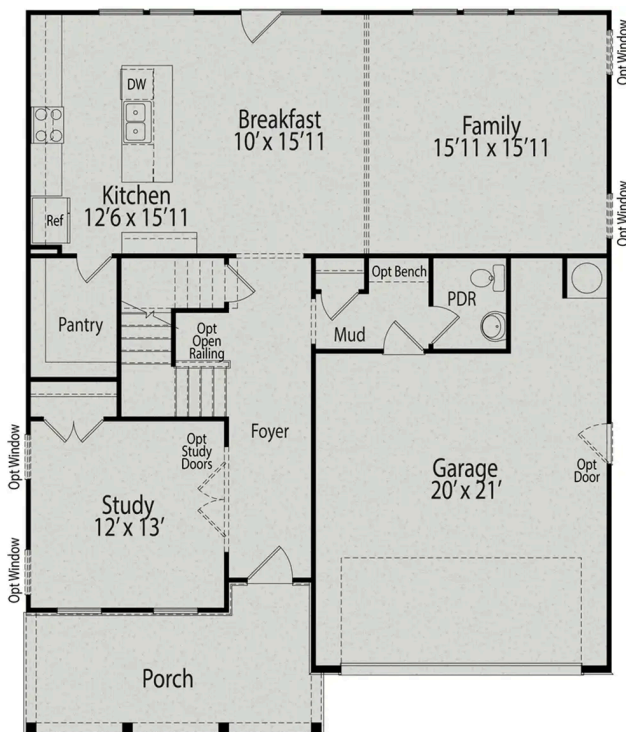


BEDS
3

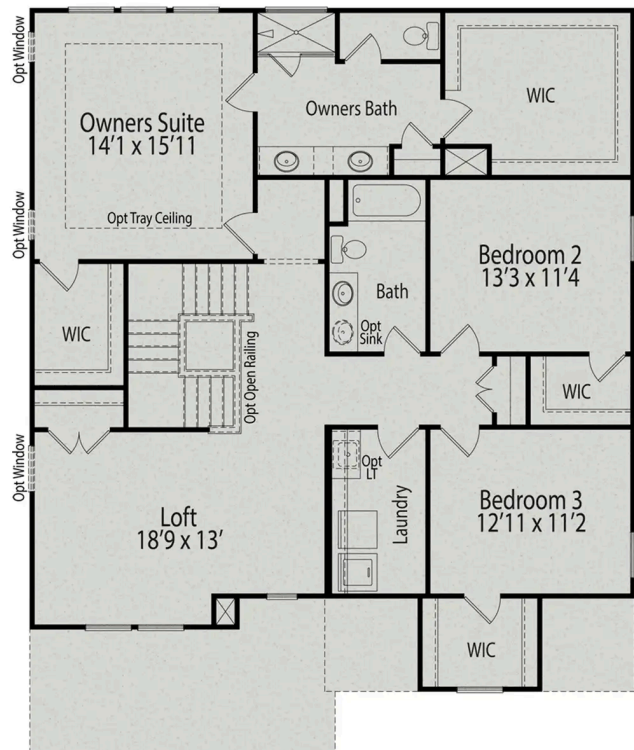
BATHS
2.5

SQ FT
2,658

PARKING
2



MAIN FLOOR PLAN



UPPER FLOOR PLAN

The Hemlock D

Discover the Hemlock with its wide-open living spaces, highlighted best in the spacious Kitchen with enviable Pantry that overlooks the Breakfast and Family Room. A convenient first floor Study welcomes you as you enter. The Hemlock makes the most of its square footage on the second floor, featuring a huge Owner's Suite with double walk-in closets, two additional bedrooms and a large Loft with ample windows.

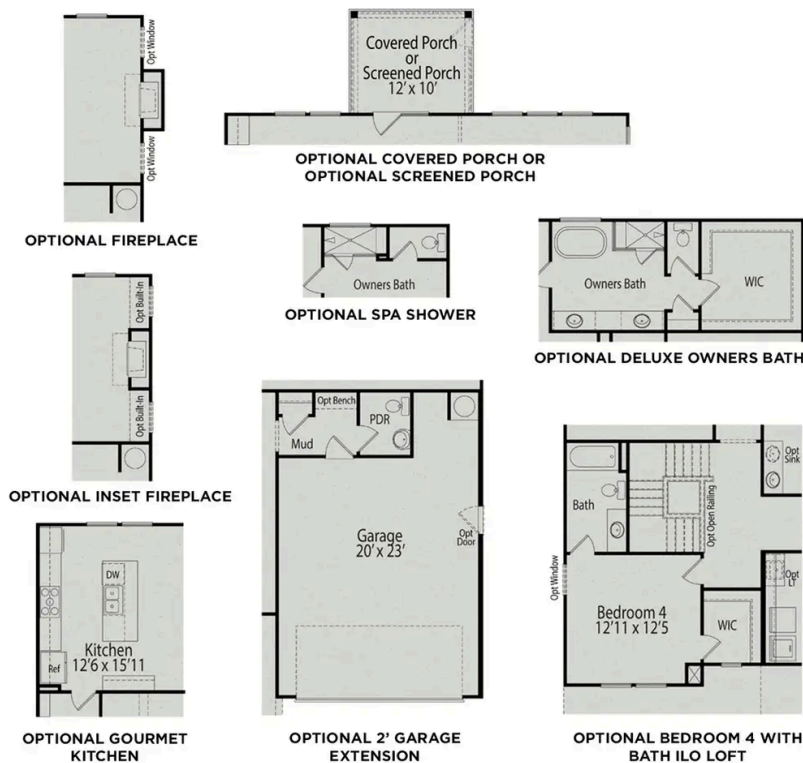
Make it your own with The Hemlock's flexible floor plan, featuring an optional gourmet kitchen, alternative bath layouts and more! Offerings vary by location, so please discuss your options with your community's agent.

BEDS
3

BATHS
2.5

SQ FT
2,658

GARAGE
2



OPTIONS



Glenmere in Knightdale, NC

Call (919) 646-6617
DAVIDSONHOMES.COM

The Hickory D

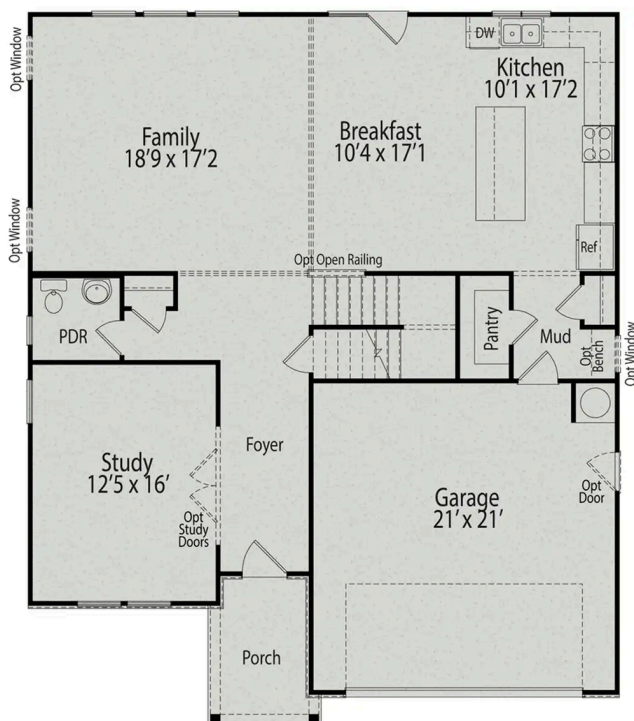


BEDS

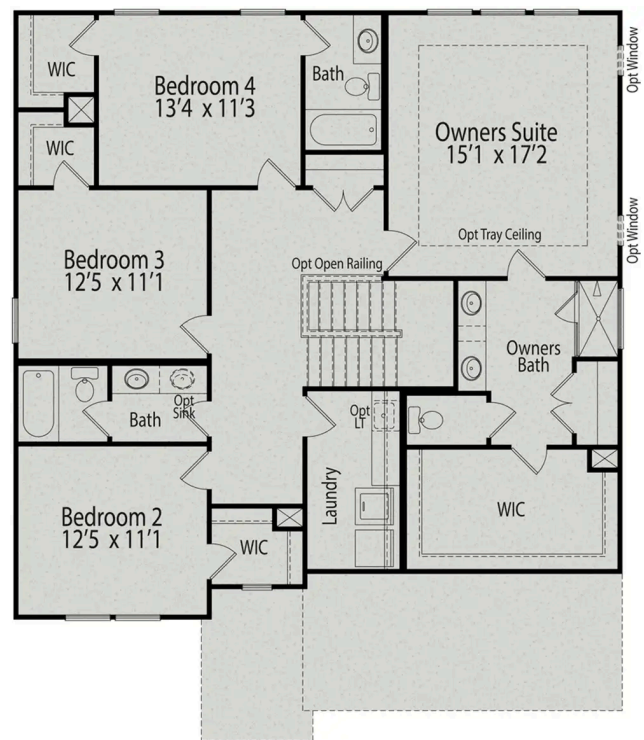
BATHS

SQ FT
2,735

PARKING 2



MAIN FLOOR PLAN



UPPER FLOOR PLAN





Glenmere in Knightdale, NC

Call (919) 646-6617
DAVIDSONHOMES.COM

The Hickory D

The Hickory's windows fill the open floor plan with natural light, welcoming you into this charming home. The Kitchen showcases ample counterspace, overlooking the Breakfast and Family Room. A large Study on the first floor offers potential, and the home's second floor features four bedrooms, each with plenty of closet space. The Owner's Suite is separate from the other bedrooms for added privacy, and the fourth bedroom features its own private bath.

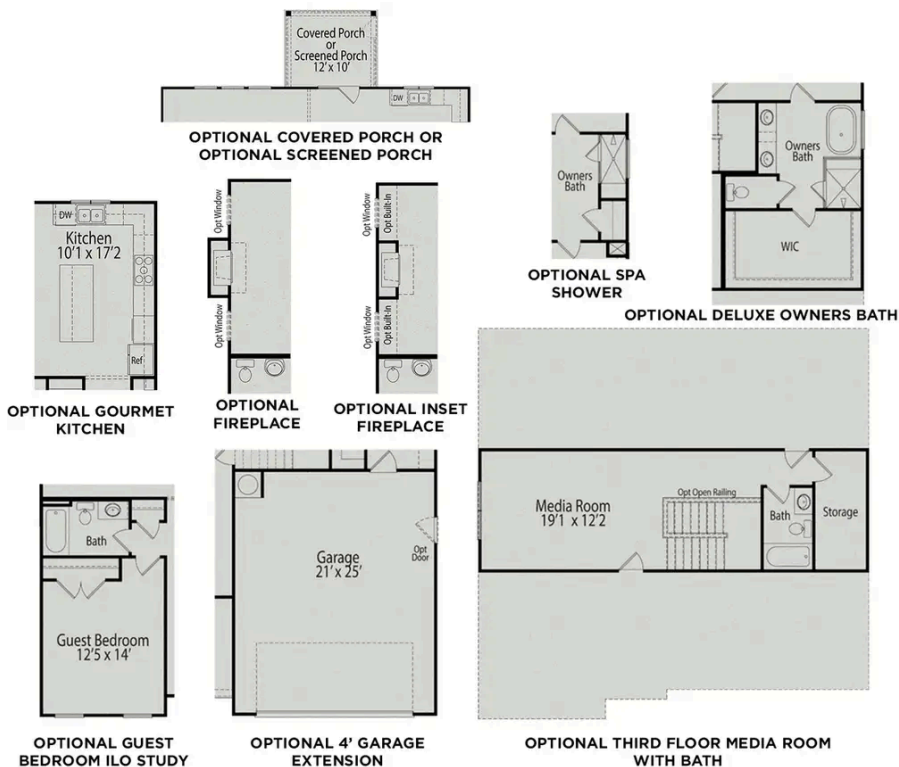
BEDS
4

BATHS
3.5

SQ FT
2,735

GARAGE 2

Make it your own with The Hickory's flexible floor plan, showcasing an optional gourmet kitchen, a fifth bedroom and more! Offerings vary by location, so please discuss your options with your community's agent.



OPTIONS



The Birch II D

Exterior Options

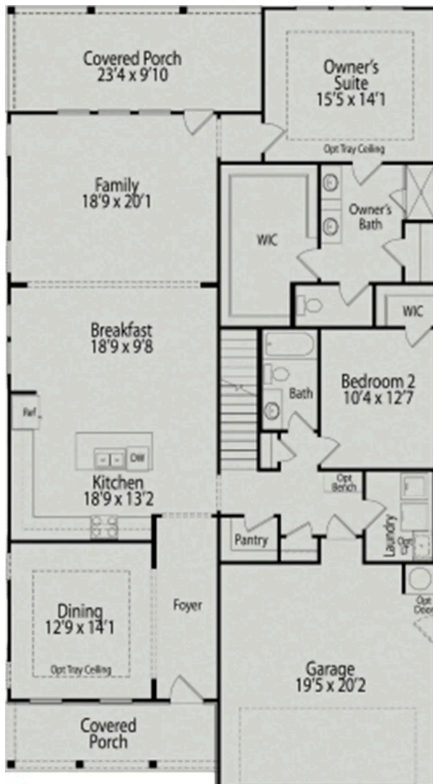


BEDS
3

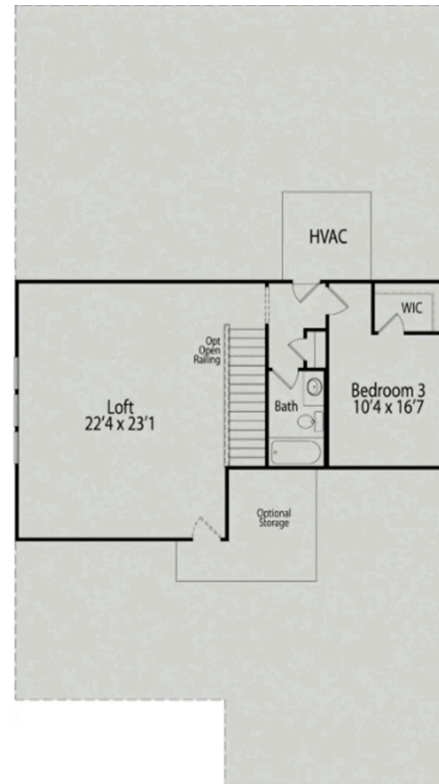
BATHS
3

SQ FT
2,736

PARKING
2



MAIN FLOOR PLAN



SECOND FLOOR PLAN

The Birch II D

Within The Birch II's charming exterior lies an open, functional floor plan. The Kitchen features plenty of counterspace with close proximity to the Dining Room. The generous Family Room leads out to the large covered porch for convenient outdoor living. The private first floor Owner's Suite features plenty of light and is complete with a huge walk-in closet. On the second floor, the home features a third bedroom and impressive Loft.

Make it your own with The Birch's II's flexible floor plan, showcasing an optional gourmet kitchen, a standalone tub and more! Offerings vary by location, so please discuss your options with your community's agent.

BEDS
3

BATHS
3

SQ FT
2,736

GARAGE
2



OPTIONS

The Magnolia A

Exterior Options

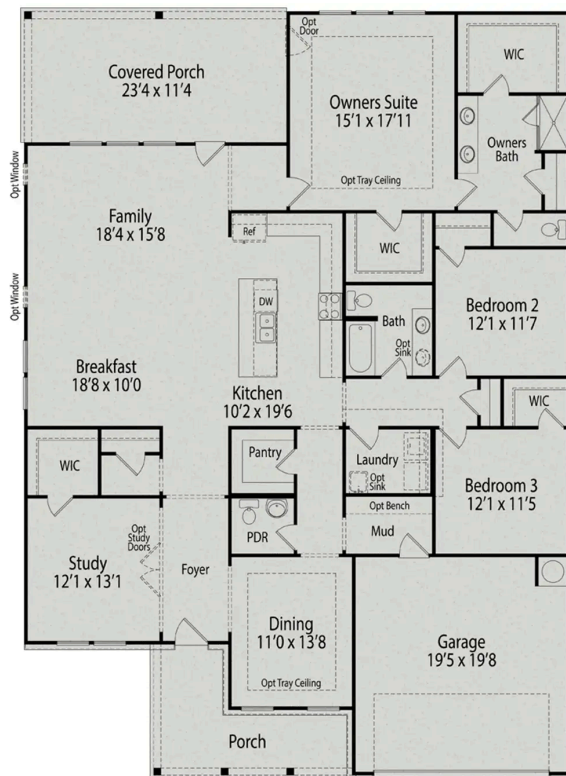


BEDS
3

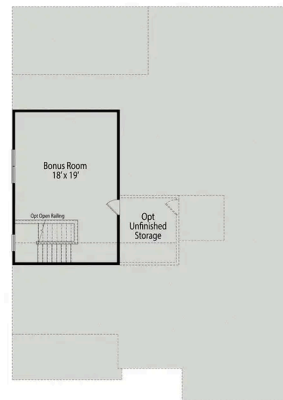
BATHS
2.5

SQ FT
2,524

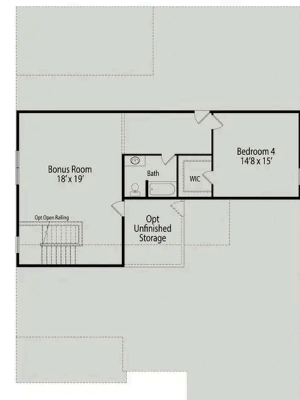
PARKING
2



MAIN FLOOR PLAN



OPTIONAL BONUS ROOM



OPTIONAL BONUS ROOM WITH BEDROOM 4

BONUS ROOM OPTIONS

The Magnolia A

With The Magnolia floor plan, you'll find an expansive, open-concept ranch design showcasing modern features and finishes. The formal dining room offers space to entertain and is connected to the kitchen through a convenient side hallway. In the owners suite, there's plenty of storage space with two closets. A spacious covered back porch, perfect for unwinding at the end of the day.

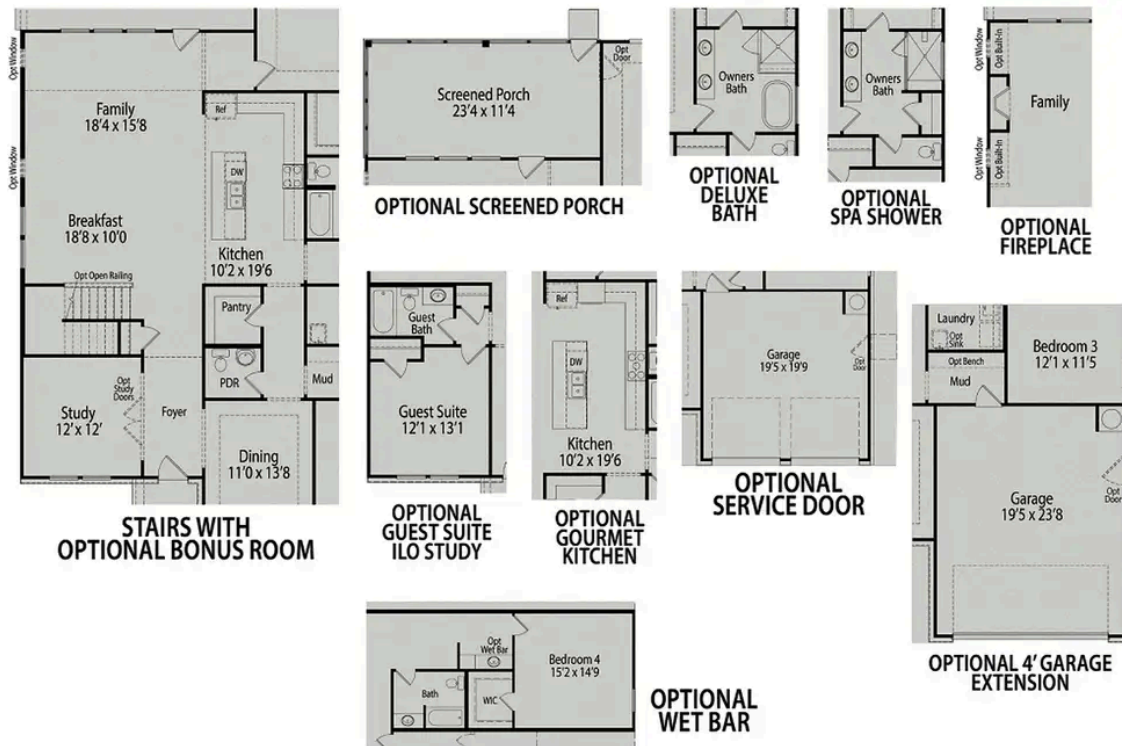
Make it your own with The Magnolia's flexible floor plan! Offerings vary by location, so please discuss your options with our New Home Consultant.

BEDS
3

BATHS
2.5

SQ FT
2,524

GARAGE
2



PLAN OPTIONS

The Cypress C II

Exterior Options

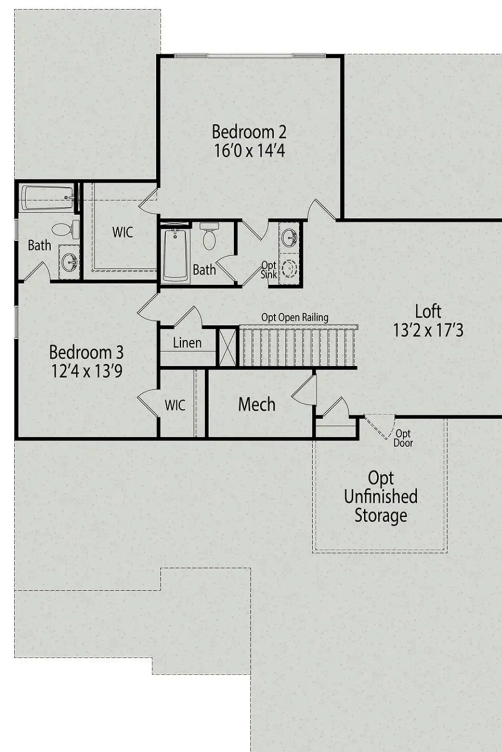
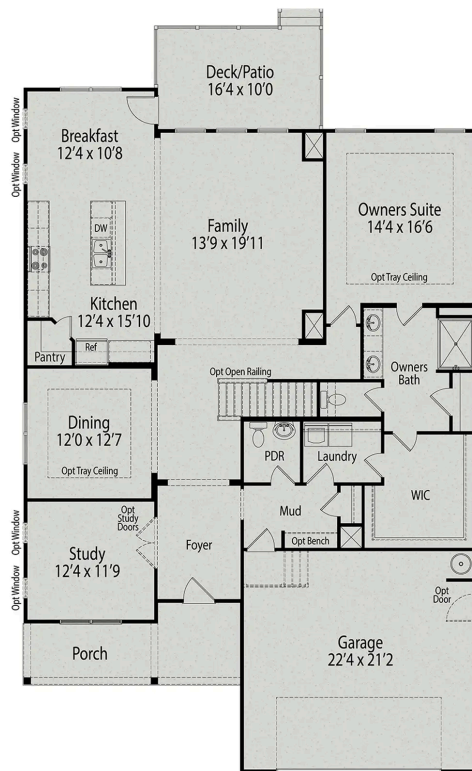


BEDS
3

BATHS
3.5

SQ FT
3,021

PARKING
2



The Cypress C II

Welcome to The Cypress! The expansive front porch welcomes you into the foyer, past the study and formal dining room into the spacious open-concept kitchen and family room. This floor plan features a convenient first-floor owners suite with an impressive ensuite bath and a spacious closet connected to the home's laundry room. Upstairs, you'll find a versatile loft area and two more bedrooms, giving everyone their own space!

Make it your own with The Cypress' flexible floor plan! Offerings vary by location, please discuss your options with our New Home Consultant.

BEDS
3

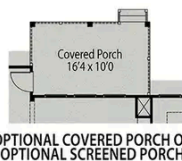
BATHS
3.5

SQ FT
3,021

GARAGE
2



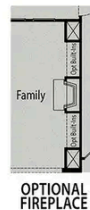
OPTIONAL GUEST SUITE



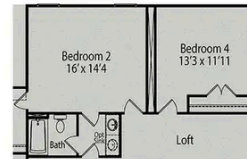
OPTIONAL COVERED PORCH OR
OPTIONAL SCREENED PORCH



OPTIONAL TRIPLE SLIDER
AT FAMILY ROOM



OPTIONAL
FIREPLACE



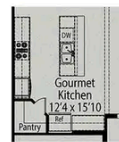
OPTIONAL BEDROOM 4



OPTIONAL
SPA SHOWER



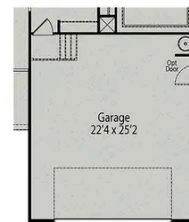
OPTIONAL
DELUXE
OWNER'S BATH



OPTIONAL
GOURMET KITCHEN



OPTIONAL EXTENDED
OWNER'S SUITE



OPTIONAL 4' GARAGE
EXTENSION

PLAN OPTIONS