

The Highlands

Davidson Homes in Arab, AL

Welcome to The Highlands, Arab, Alabama's newest community by Davidson Homes. Here, we're creating more than just houses; we're building a neighborhood where everyday life is enriched by a strong sense of community. Perfectly situated for those who enjoy the outdoors and convenient access to local amenities, The Highlands offers everything from Walmart and Tractor Supply for your daily needs, to the Twin Lakes Golf Course and Arab Country Club for weekend activities. The area is also ideal for families, with Arab Park & Rec, Arab City Park, and the Arab Historic Village all nearby.

Features

Gas Options Available
Arab City Schools
Minutes From Golf Courses

Local Schools

Arab City School District
Arab Primary
Arab Elementary
Arab Junior High
Arab High

Utilities

Water: Arab City
Electric: Arab Electric Co-O...
Gas: Marshall County Gas



Community Address

200 Eddy Scant City Rd NE

Floor Plans

08

Homes from the

\$260s

Copyright 2024 Davidson Homes, Inc. | All Rights Reserved | Davidson Homes is a leading builder of quality new homes across the Southeast. Davidson Homes reserves the right to adjust items listed without prior notice or obligation. Such items may include, but are not limited to, options, included features and community information, pricing, amenities, square footage, terms or availability. Features, options, floor plans, elevations, colors, dimensions and photographs are for illustration purposes and may vary from homes built. Please see your community specialist for details. Equal housing lender. Last Updated 05/19/2024.





The Highlands in Arab, AL

Community Homesite Map

Sharon Penny
Call (256) 488-3338



THE HIGHLANDS

Arab, Alabama



 COMING SOON

 SOLD





The Highlands in Arab, AL

Call (256) 488-3338
DAVIDSONHOMES.COM

The Butler



Description

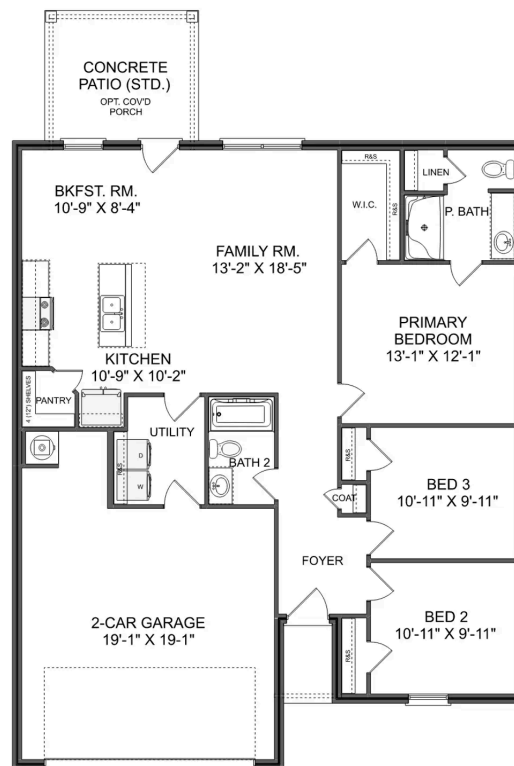
"The Butler" is a gracefully designed 1,299 square foot floor plan, blending comfort with efficiency. Its open floor plan unites the living, dining, and kitchen areas, creating an inviting space ideal for family life and entertaining.

BEDS
3

BATHS
2

SQ FT
1,299

PARKING
2



THE BUTLER A MAIN FLOOR



The Asheville C



Description

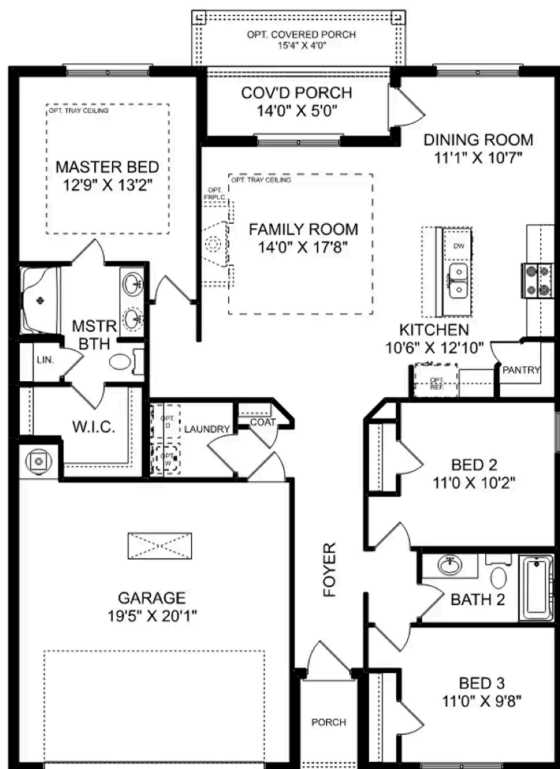
Discover the charm of one-level living with this open-concept home! From The Asheville's large, kitchen island overlooking the family room to its isolated Master Bedroom, we've designed this home with you in mind. The three bedrooms offer plenty of space for you and your guests.

BEDS
3

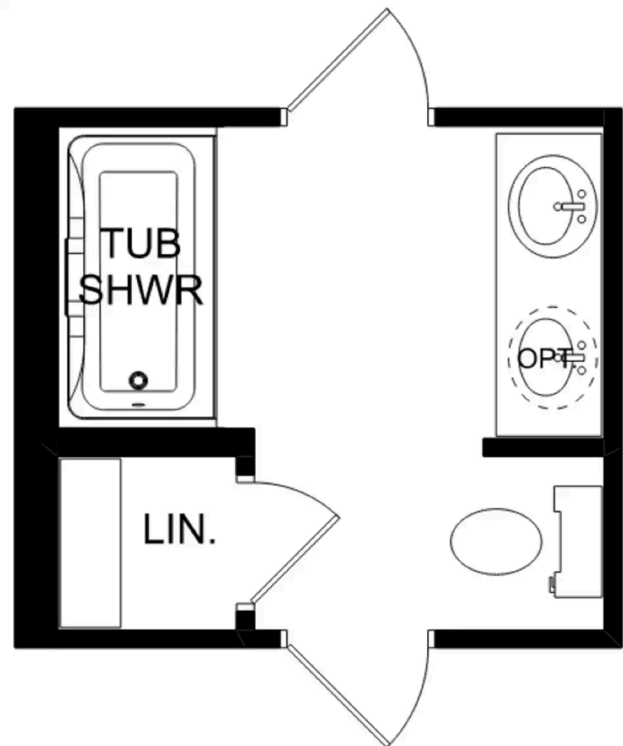
BATHS
2

SQ FT
1,484

PARKING
2



THE ASHEVILLE C



THE ASHEVILLE C OPTIONS

The Franklin C



Description

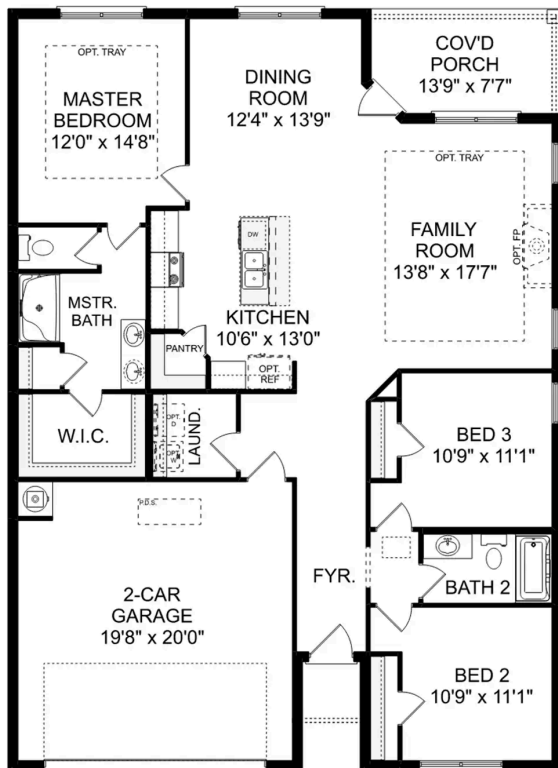
Within this cozy, one-level home lies a modern use of space. From the kitchen's large island to the family room's spacious open-concept, you're surrounded by owner-centric design.

BEDS
3

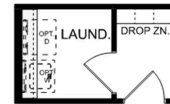
BATHS
2

SQ FT
1,620

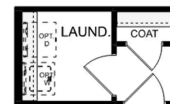
PARKING
2



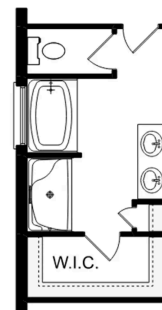
THE FRANKLIN C



OPT. DROP ZONE



OPT. COAT CLOSET



OPT. DELUXE MASTER BATH

THE FRANKLIN C OPTIONS

The Daphne C

Exterior Options

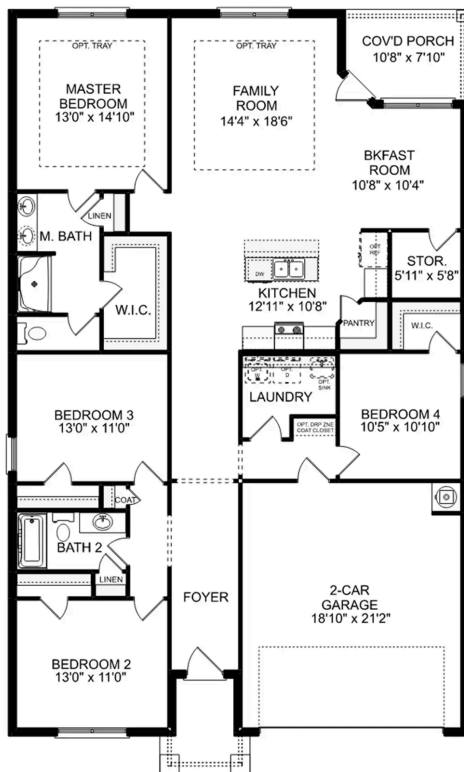


BEDS
4

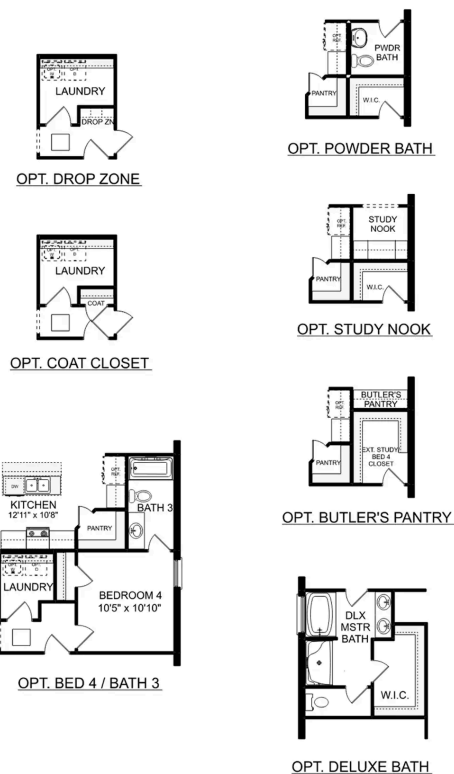
BATHS
2

SQ FT
1,964

PARKING
2



THE DAPHNE C



THE DAPHNE C OPTIONS



The Highlands in Arab, AL

Call (256) 488-3338
DAVIDSONHOMES.COM

The Everett

Exterior Options

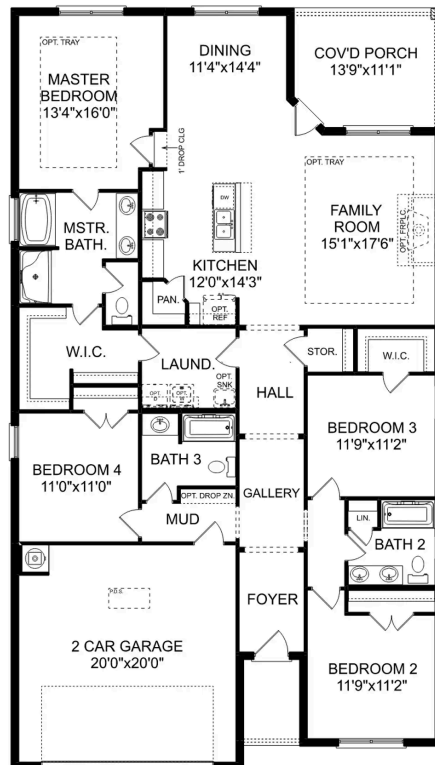


BEDS
4

BATHS
3

SQ FT
2,136

PARKING
2



THE EVERETT



The Aiken

Exterior Options

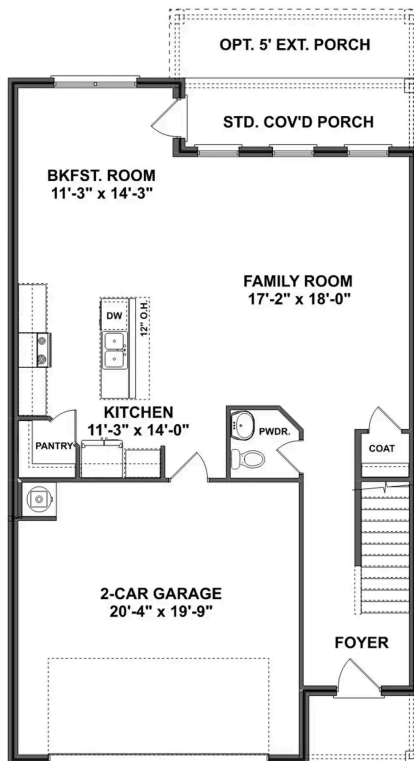


BEDS
3

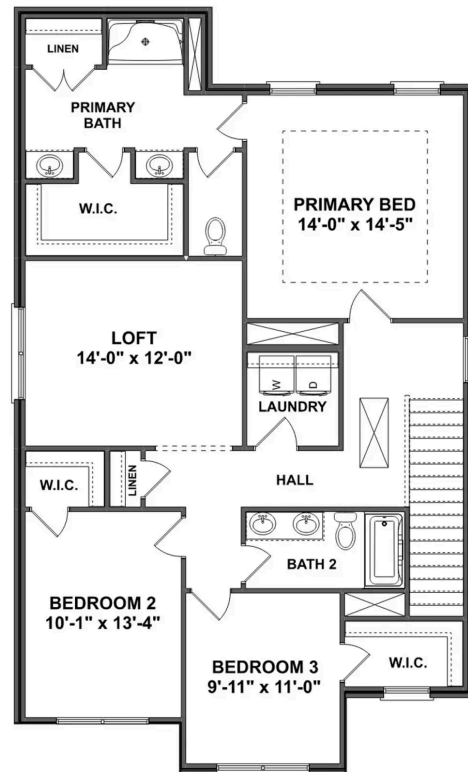
BATHS
2.5

SQ FT
2,201

PARKING
2



THE AIKEN MAIN FLOOR



THE AIKEN UPPER FLOOR

The Aiken

Welcome home to The Aiken floor plan! This charming 2-story home spans across 2,201 square feet and offers a perfect blend of sophistication and functionality. With 3 or 4 bedrooms and 2.5 bathrooms, there's plenty of space for families of all sizes. As you step inside, you're greeted by an inviting open concept floor plan, where the spacious living area seamlessly flows into the dining and kitchen spaces. The stainless-steel appliances and recessed lighting in the kitchen add a touch of modernity, making it a chef's delight. Whether you prefer cozy family dinners or entertaining guests, the covered porch offers a lovely spot for outdoor gatherings, connecting you with the beauty of nature.

BEDS
3

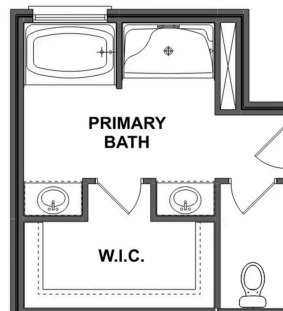
BATHS
2.5

SQ FT
2,201

GARAGE
2



OPT. BEDROOM 4



LUX. PRIMARY BATH

THE AIKEN OPTIONS

The Shelby A

Exterior Options

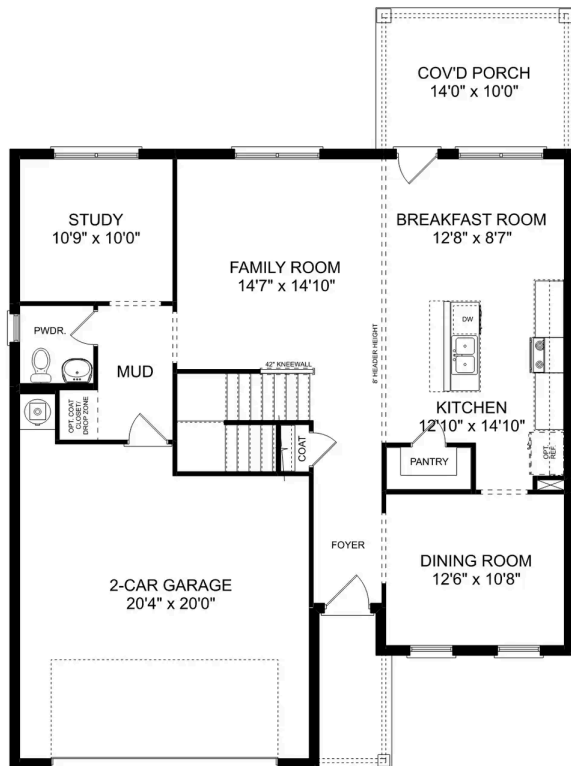


BEDS
3

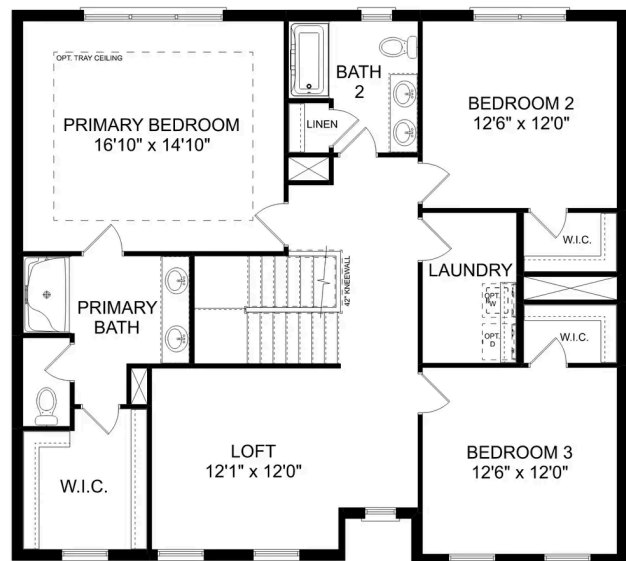
BATHS
2.5

SQ FT
2,452

PARKING
2



MAIN FLOOR



UPPER FLOOR

The Shelby A

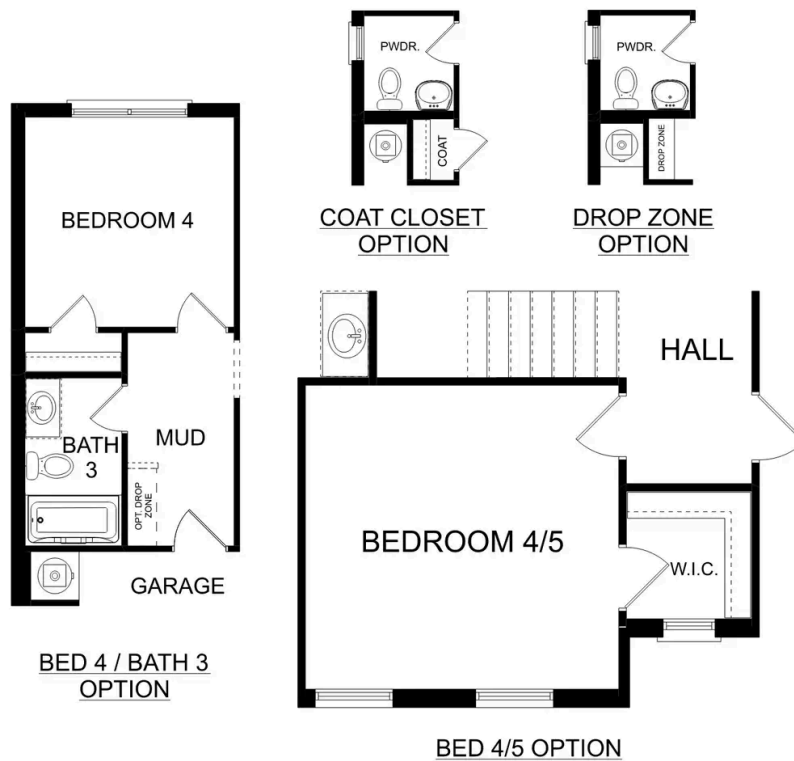
The Shelby welcomes you into a modern, open space, complete with a formal dining room and study. The kitchen overlooks an open-concept family room. The second floor features a spacious master bedroom with a large walk-in closet and master bath along with two additional bedrooms with ample walk-in closets of their own.

BEDS
3

BATHS
2.5

SQ FT
2,452

GARAGE
2



PLAN OPTIONS

The Chelsea A

Exterior Options

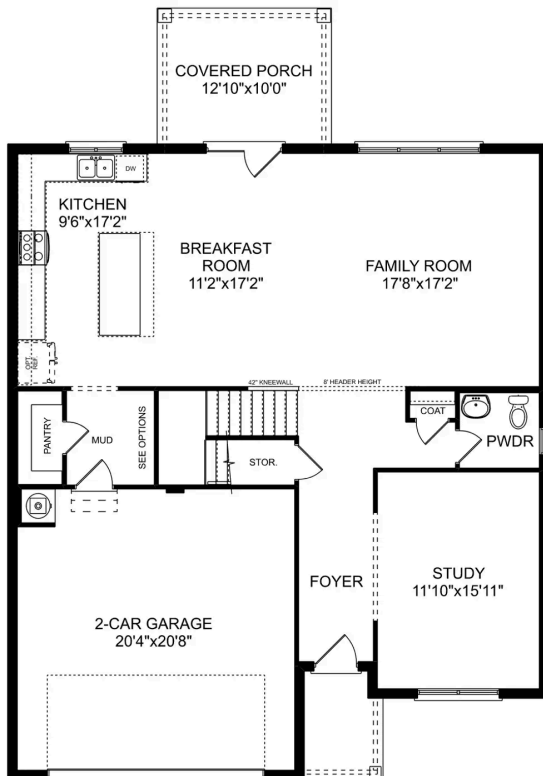


BEDS
4

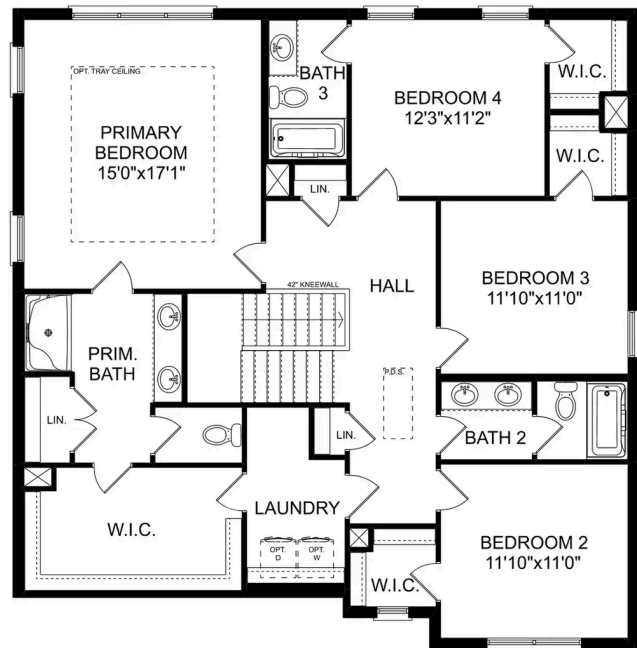
BATHS
3.5

SQ FT
2,769

PARKING
2



MAIN FLOOR



UPPER FLOOR

The Chelsea A

The Chelsea's windows fill the open floor plan with natural light, welcoming you into this charming home. The kitchen showcases ample counterspace, overlooking the breakfast and family room. A large study on the first floor offers potential, and the home's second floor features four bedrooms, each with plenty of closet space. The master bedroom is separate from the other bedrooms for added privacy, and the fourth bedroom features its own private bath.

Make it your own with The Chelsea's flexible floor plan. Offerings vary by location, so please discuss your options with your community's agent.

BEDS
4

BATHS
3.5

SQ FT
2,769

GARAGE
2

