

The Towns at Red River

Davidson Homes in Gallatin, TN

Experience life at The Towns at Red River, a captivating new townhome community in the heart of Gallatin. Our welcoming neighborhood promises a lifestyle of convenience, only minutes away from everything you need!

Our newly designed townhomes are designed for modern living and filled with contemporary finishes. Discover the Davidson difference today and find out why The Towns at Red River is the ideal place for you to make your new home!

Features

5 Minutes to Kroger
Quartz Countertops
Covered Patios

Local Schools

Howard Elementary
Rucker Stewart Middle
Gallatin Senior High

Utilities

Electric: Gallatin Electric
Water: Gallatin Public Utiliti...



Community Address

Red River Road

New Homes

08

Floor Plans

02

Homes from the

\$250s

Copyright 2024 Davidson Homes, Inc. | All Rights Reserved | Davidson Homes is a leading builder of quality new homes across the Southeast. Davidson Homes reserves the right to adjust items listed without prior notice or obligation. Such items may include, but are not limited to, options, included features and community information, pricing, amenities, square footage, terms or availability. Features, options, floor plans, elevations, colors, dimensions and photographs are for illustration purposes and may vary from homes built. Please see your community specialist for details. Equal housing lender. Last Updated 05/19/2024.





The Towns at Red River in Gallatin, TN

Quick Move-In Homes

Jenn Smith
Call (615) 437-5589



UPDATED
05/19/2024

HOMES
08

COMMUNITY ADDRESS
Red River Road



\$271,170
2 Beds 3 Baths 1,359 Sq Ft
1101 Elliott Williams Pvt Way | #1
The Cumberland A Exterior Plan



\$263,570
3 Beds 3 Baths 1,359 Sq Ft
1008 Elliott Williams Pvt Way | #55
The Cumberland B Interior Plan



\$270,570
3 Beds 3 Baths 1,359 Sq Ft
1113 Elliott Williams Pvt Way | #4
The Cumberland B Exterior Plan



\$263,870
2 Beds 3 Baths 1,359 Sq Ft
1109 Elliott Williams Pvt Way | #3
The Cumberland A Interior Plan



\$264,170
2 Beds 3 Baths 1,359 Sq Ft
1116 Elliott Williams Pvt Way | #58
The Cumberland A Interior Plan



\$263,570
3 Beds 3 Baths 1,359 Sq Ft
1120 Elliott Williams Pvt Way | #59
The Cumberland B Interior Plan



\$263,570
3 Beds 3 Baths 1,359 Sq Ft
1129 Elliott Williams Pvt Way | #7
The Cumberland A Interior Plan



\$263,580
3 Beds 3 Baths 1,359 Sq Ft
1140 Elliott Williams Way | #63
The Cumberland B Interior Plan





The Towns at Red River in Gallatin, TN

Community Homesite Map

Jenn Smith

Call (615) 437-5589



THE TOWNS AT RED RIVER

Gallatin, Tennessee

 MOVE-IN READY

 COMING SOON

 SOLD

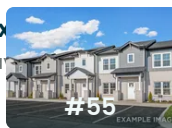
Featured Homes for Sale



The Cumberland A Exterior

1101 Elliott Williams Pvt Way

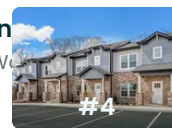
\$271,170



The Cumberland B Interior

1008 Elliott Williams Pvt Way

\$263,570



The Cumberland B Exterior

1113 Elliott Williams Pvt Way

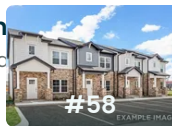
\$270,570



The Cumberland A Interior

1109 Elliott Williams Pvt Way

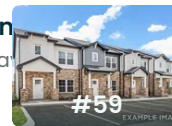
\$263,870



The Cumberland A Interior

1116 Elliott Williams Pvt Way

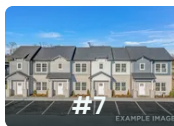
\$264,170



The Cumberland B Interior

1120 Elliott Williams Pvt Way

\$263,570



The Cumberland A Interior

1129 Elliott Williams Pvt Way

\$263,570



The Cumberland B Interior

1140 Elliott Williams Way

\$263,580

Copyright 2024 Davidson Homes, Inc. | All Rights Reserved | Davidson Homes is a leading builder of quality new homes across the Southeast. Davidson Homes reserves the right to adjust items listed without prior notice or obligation. Such items may include, but are not limited to, options, included features and community information, pricing, amenities, square footage, terms or availability. Features, options, floor plans, elevations, colors, dimensions and photographs are for illustration purposes and may vary from homes built. Please see your community specialist for details. Equal housing lender.



The Cumberland Interior



BEDS
2

BATHS
3

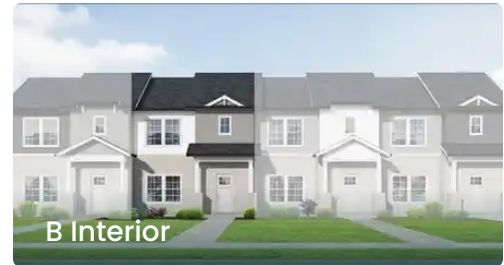
SQ FT
1,359

PARKING

Exterior Options



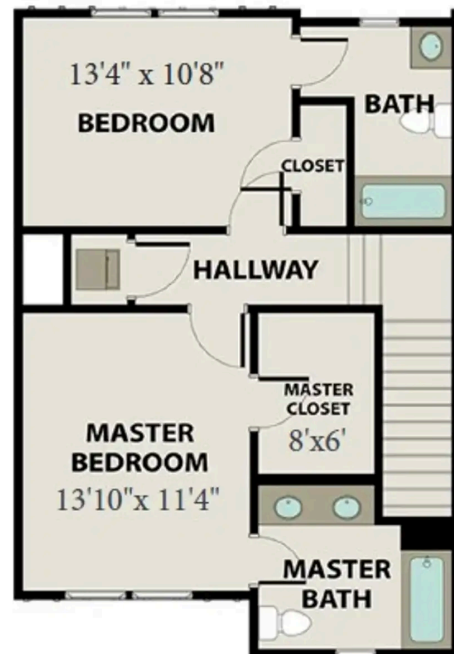
A Interior



B Interior

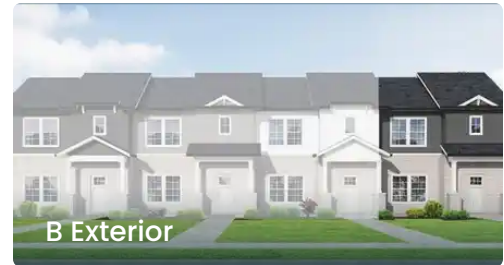


MAIN FLOOR PLAN



UPPER FLOOR PLAN

The Cumberland Exterior



BEDS
2

BATHS
3

SQ FT
1,359

PARKING

