

# Sage Farms

Davidson Homes in White House, TN

Welcome to Sage Farms, our newest community nestled in the heart of White House. This uniquely crafted development perfectly merges a tranquil setting with the convenience of urban amenities within easy reach.

Our brand new floor plans have exceptional attention to detail and incorporate modern design elements. These plans offer a variety of options to suit your needs, promising comfort and style without compromising on your needs.

## Features

Walking Trail  
5 Minutes from Walmart

## Local Schools

Robert Wood Elementary  
White House Heritage Ele...  
White House Heritage High

## Utilities

Electric: Cumberland Electr...  
Water: White House Utility ...



Floor Plans

07

Homes from the

\$310s

Copyright 2024 Davidson Homes, Inc. | All Rights Reserved | Davidson Homes is a leading builder of quality new homes across the Southeast. Davidson Homes reserves the right to adjust items listed without prior notice or obligation. Such items may include, but are not limited to, options, included features and community information, pricing, amenities, square footage, terms or availability. Features, options, floor plans, elevations, colors, dimensions and photographs are for illustration purposes and may vary from homes built. Please see your community specialist for details. Equal housing lender. Last Updated 05/19/2024.





Sage Farms in White House, TN

# Community Homesite Map

Derek S. & Craig P.

Call (615) 492-8807

## SAGE FARMS

White House, Tennessee



COMING SOON

AVAILABLE

SOLD





# The Asheville C

## Exterior Options

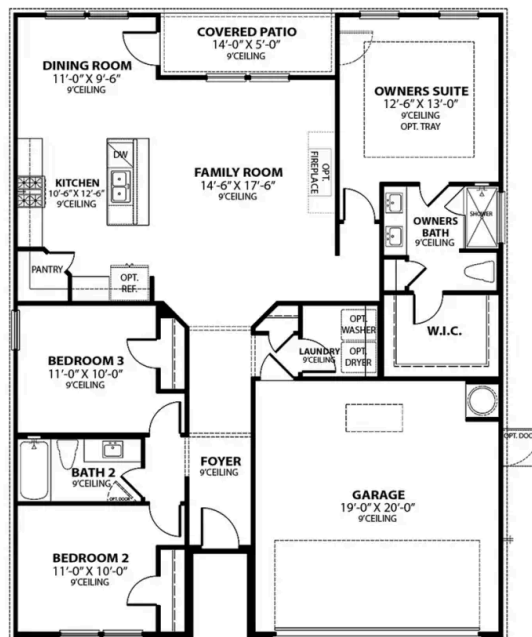


**BEDS**  
**3**

**BATHS**  
**2**

**SQ FT**  
**1,428**

**PARKING**  
**2**



**MAIN FLOOR PLAN**

# The Franklin C

## Exterior Options

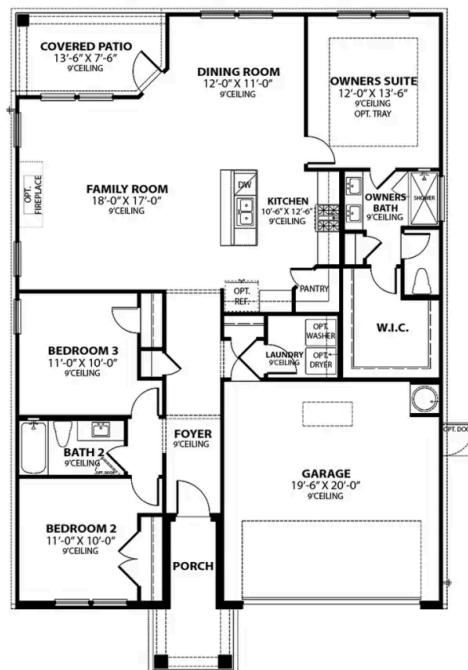


**BEDS**  
**3**

**BATHS**  
**2**

**SQ FT**  
**1,556**

**PARKING**  
**2**



**MAIN FLOOR PLAN**



## The Gordon A

### Exterior Options

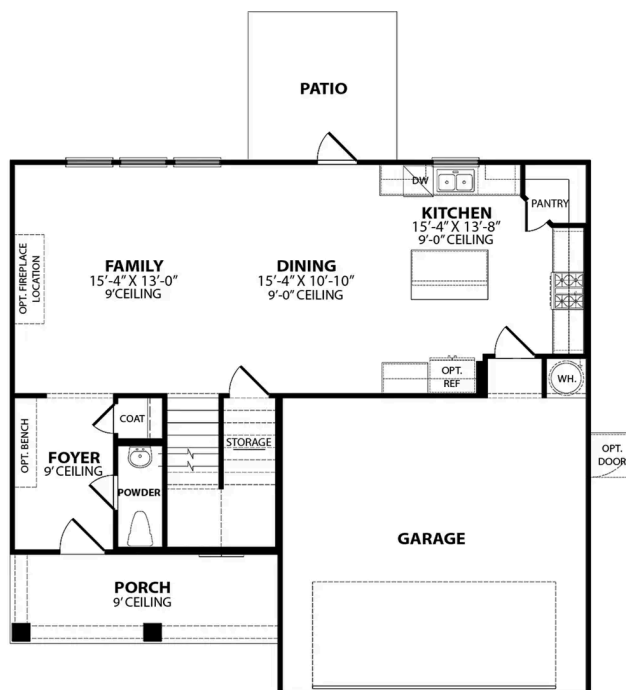


**BEDS**  
**3**

**BATHS**  
**2.5**

**SQ FT**  
**1,972**

**PARKING**  
**2**



THE GORDON A MAIN FLOOR



THE GORDON A SECOND FLOOR

## The Gordon A

Introducing The Gordon, a beautifully designed, open-concept floor plan that combines comfort and charm. The Gordon's unique design ensures an efficient use of space, making it perfect for modern living.

As you enter the home, you are greeted by a spacious foyer that leads into the heart of The Gordon. Here, you'll find the expansive living area, which seamlessly connects to the gourmet kitchen and dining area. The outdoor patio is a stunning extension of the living space, offering a private retreat for relaxation or entertaining.

BEDS  
**3**

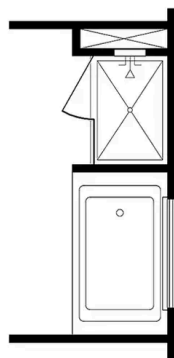
BATHS  
**2.5**

SQ FT  
**1,972**

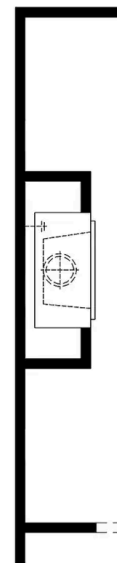
GARAGE  
**2**



**OPT. COVERED PATIO IN LIEU OF PATIO**



**OPT. DELUXE OWNERS BATH**



**OPT. FIREPLACE**

### THE GORDON A OPTIONS

# The Logan A



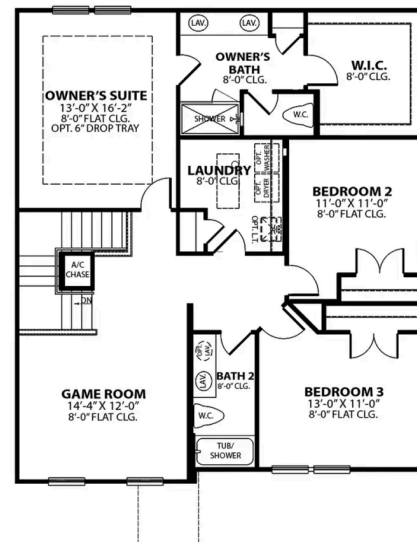
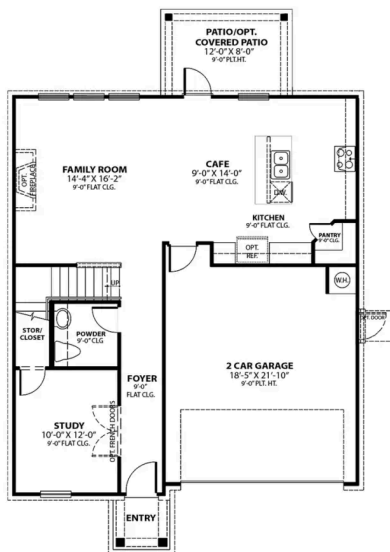
**BEDS**  
**3**

**BATHS**  
**2.5**

**SQ FT**  
**2,155**

**PARKING**  
**2**

## Exterior Options





# The Logan A

The Logan is a spacious and modern home with an open-concept design that seamlessly connects the living room, cafe, and kitchen. As you enter the home, you are greeted by a welcoming foyer that leads you into the heart of the house. The kitchen features ample counter space, a large island with seating, and a pantry for added storage. Down the hall is a cozy study, perfect for those who work from home or need a quiet space to read or study. The study is tucked away from the main living area, providing privacy and seclusion when needed.

BEDS  
**3**

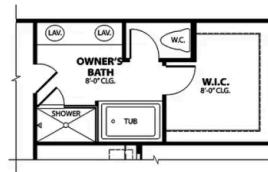
BATHS  
**2.5**

SQ FT  
**2,155**

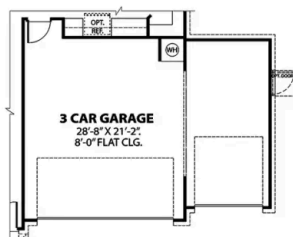
GARAGE  
**2**



**OPT. BEDROOM 4  
I.L.O. GAMEROOM**



**OPT. DELUXE OWNER'S BATH**



**OPT. 3 CAR GARAGE**

## OPTIONS

## The Grayson A



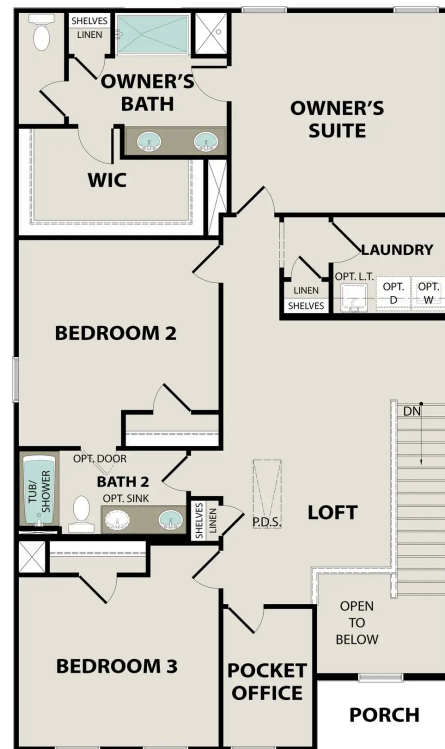
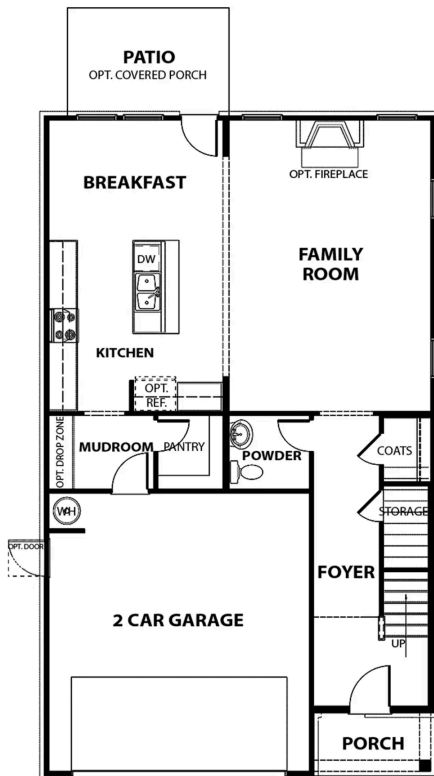
**BEDS**  
**3**

**BATHS**  
**2.5**

**SQ FT**  
**2,278**

**PARKING**  
**2**

### Exterior Options



## The Grayson A

Welcome to The Grayson, a stunning open-concept home designed for modern living. The foyer seamlessly flows into the heart of the home - the open-concept living area, which combines the living room, kitchen, and breakfast nook. Just off the kitchen, the charming patio provides a delightful outdoor space for dining, relaxation, or social gatherings.

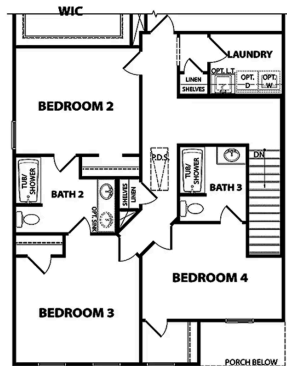
Upstairs, The Grayson's thoughtful layout includes a pocket office, providing an efficient workspace for remote work or study, while the spacious loft area offers additional living space for a variety of uses, such as a media room or play area.

BEDS  
**3**

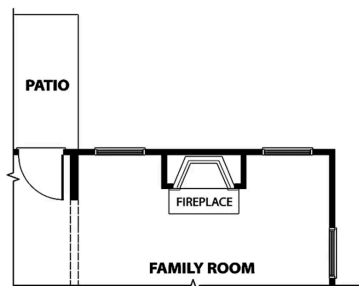
BATHS  
**2.5**

SQ FT  
**2,278**

GARAGE  
**2**



**OPT. BEDROOM 4 / BATH 3**



**OPT. FIREPLACE**

**THE GRAYSON A OPTIONS**



# The Murray B

## Exterior Options

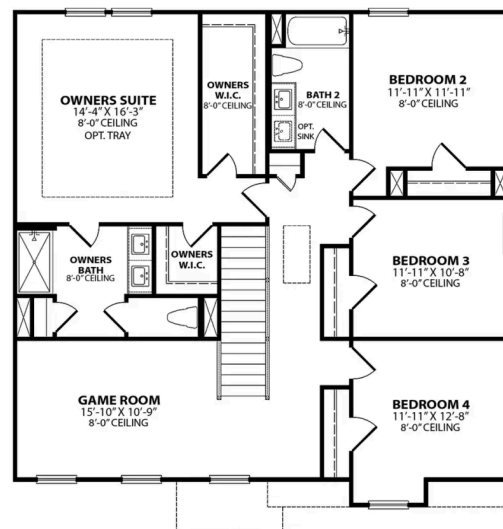
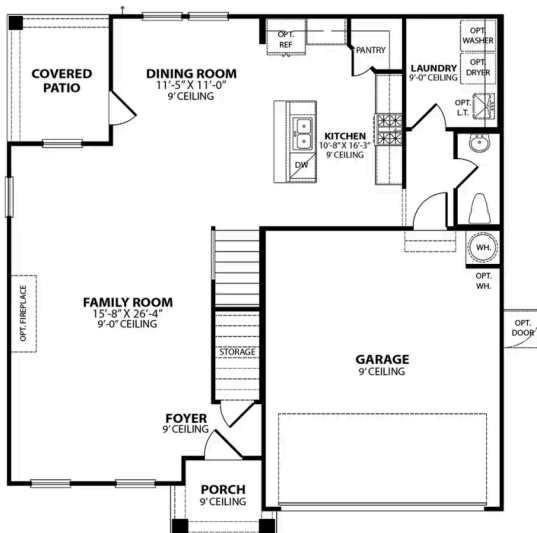


**BEDS**  
**4**

**BATHS**  
**2.5**

**SQ FT**  
**2,384**

**PARKING**  
**2**



## The Murray B

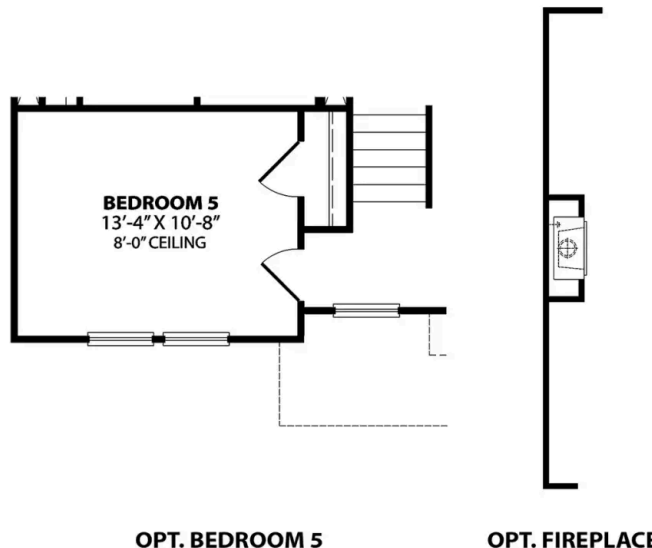
The Murray is a spacious two-story home that boasts an open-concept floor plan perfect for modern living. The ground floor features a welcoming foyer that leads to a sprawling family room, which is bathed in natural light thanks to its large windows. The family room seamlessly flows into the dining area and kitchen, creating a perfect space for entertaining guests or spending quality time with loved ones. The ground floor also includes a covered patio, perfect for enjoying a cup of coffee in the morning or for hosting outdoor gatherings.

BEDS  
**4**

BATHS  
**2.5**

SQ FT  
**2,384**

GARAGE  
**2**



OPT. BEDROOM 5

OPT. FIREPLACE

### OPTIONS



## Sage Farms in White House, TN

Call **(615) 492-8807**  
DAVIDSONHOMES.COM

# The Henry A



## BEDS

## BATHS

### 3.5

SQ FT  
**2,655**

## PARKING



## MAIN FLOOR PLAN



## SECOND FLOOR PLAN





# The Henry A

Welcome to The Henry! Upon entering the spacious foyer, you'll immediately notice the dedicated study, perfect for a home office or quiet reading nook. You'll be captivated by the open-concept living area, seamlessly connecting the family room, and kitchen. This layout offers ample space for entertaining, while multiple windows provide an abundance of natural light.

The Henry's thoughtful design includes four generously sized bedrooms, with the luxurious master suite boasting a walk-in closet and en-suite bathroom. Two additional full bathrooms provide convenience for family members and guests, while the half bath situated on the main floor is perfect for visitors.

BEDS  
**4**

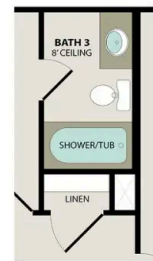
BATHS  
**3.5**

SQ FT  
**2,655**

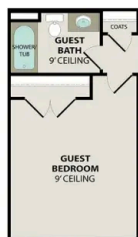
GARAGE  
**2**



**OPT. DELUXE BATH**



**OPT. BATH 3  
I.L.O. OWNERS W.I.C.**



**OPT. GUEST BEDROOM  
I.L.O. STUDY**



**OPT. FIREPLACE**

## OPTIONS