

Cain Park

Davidson Homes in Hartselle, AL

Welcome to Cain Park, a brand-new community built by Davidson Homes. Located just five minutes outside of downtown Hartselle, Cain Park offers an affordable and laidback lifestyle in a charming area.

Conveniently located between Huntsville, Decatur and Cullman, you'll have easy access to all three cities within 30 minutes or less. Plus, with easy access to I-65, commuting to work or running errands is a breeze.

Features

Bonus Room Options
Easy access to I-65
Highly-rated Schools

Local Schools

Hartselle City School District
F. E. Burleson Elementary
Hartselle Intermediate
Hartselle Junior High
Hartselle High

Utilities

Electric: Joe Wheeler EMC
Gas: Hartselle Utilities
Water: Northeast Morgan ...



Community Address
502 Ronnie Dr.

New Homes

06

Floor Plans

14

Homes from the

\$240s

Copyright 2024 Davidson Homes, Inc. | All Rights Reserved | Davidson Homes is a leading builder of quality new homes across the Southeast. Davidson Homes reserves the right to adjust items listed without prior notice or obligation. Such items may include, but are not limited to, options, included features and community information, pricing, amenities, square footage, terms or availability. Features, options, floor plans, elevations, colors, dimensions and photographs are for illustration purposes and may vary from homes built. Please see your community specialist for details. Equal housing lender. Last Updated 05/19/2024.





Cain Park in Hartselle, AL

Quick Move-In Homes

UPDATED
05/19/2024

HOMES
06

Gabrielle Bili
Call (256) 344-3352



COMMUNITY ADDRESS
502 Ronnie Dr.



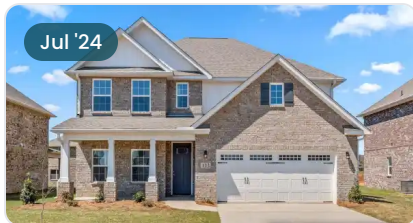
\$429,900
4 Beds 3.5 Baths 2,904 Sq Ft
1909 Rae Court | #37
The Rockford Plan



\$239,900
2 Beds 2 Baths 1,453 Sq Ft
406 Ronnie Drive | #1020
The Camilla A Plan



\$407,996
4 Beds 3.5 Baths 2,678 Sq Ft
600 Ronnie Drive | #5
The Harrison B Plan



\$409,900
4 Beds 3.5 Baths 2,769 Sq Ft
1901 Dawn Court | #34
The Chelsea C Plan



\$446,614
5 Beds 4 Baths 3,199 Sq Ft
1903 Rae Court | #40
The Madison B Plan



\$334,900
3 Beds 2.5 Baths 1,912 Sq Ft
1911 Rae Court | #36
The Montgomery Plan





Cain Park in Hartselle, AL

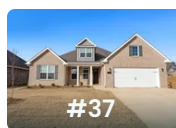
Community Homesite Map

Gabrielle Bili
Call (256) 344-3352

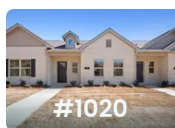


MOVE-IN READY QUICK MOVE-IN COMING SOON AVAILABLE SOLD

Featured Homes for Sale



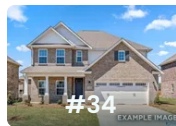
The Rockford
1909 Rae Court
\$429,900



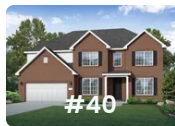
The Camilla A
406 Ronnie Drive
\$239,900



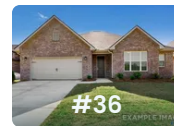
The Harrison B
600 Ronnie Drive
\$407,996



The Chelsea C
1901 Dawn Court
\$409,900



The Madison B
1903 Rae Court
\$446,614



The Montgomery
1911 Rae Court
\$334,900

Copyright 2024 Davidson Homes, Inc. | All Rights Reserved | Davidson Homes is a leading builder of quality new homes across the Southeast. Davidson Homes reserves the right to adjust items listed without prior notice or obligation. Such items may include, but are not limited to, options, included features and community information, pricing, amenities, square footage, terms or availability. Features, options, floor plans, elevations, colors, dimensions and photographs are for illustration purposes and may vary from homes built. Please see your community specialist for details. Equal housing lender.



The Camilla A



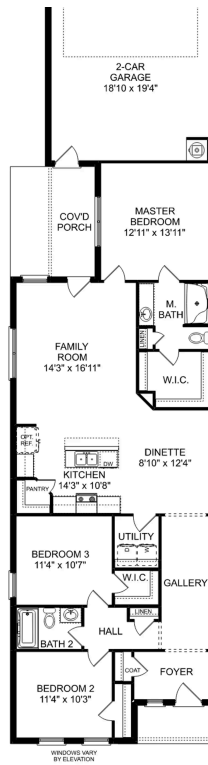
BEDS
2

BATHS
2

SQ FT
1,453

PARKING
2

Exterior Options



THE CAMILLA A TOWNHOME EXTERIOR UNIT
FLOOR PLAN



THE CAMILLA A TOWNHOME INTERIOR UNIT
FLOOR PLAN

The Montgomery

Exterior Options

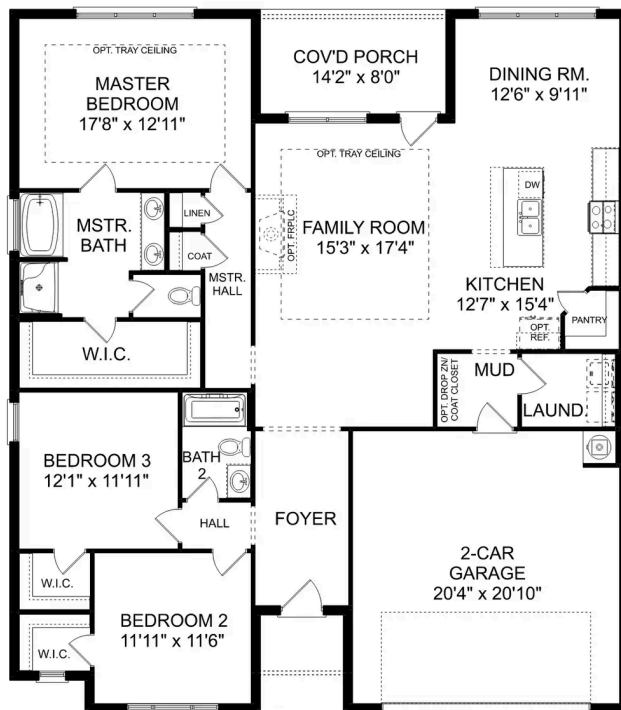


BEDS
3

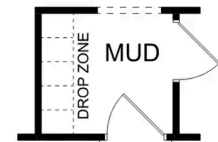
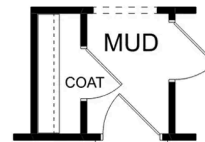
BATHS
2

SQ FT
1,912

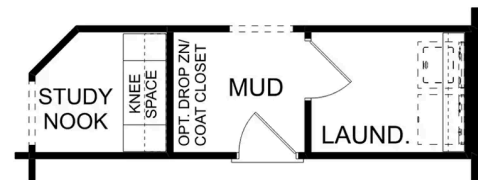
PARKING
2



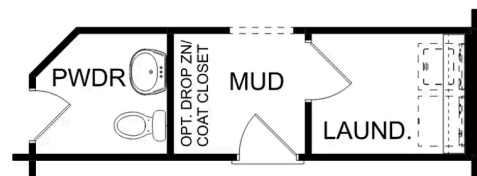
THE MONTGOMERY



OPT. COAT CLOSET OR DROP ZONE



OPT. STUDY NOOK



OPT. POWDER BATH

THE MONTGOMERY OPTIONS



Cain Park in Hartselle, AL

Call (256) 344-3352
DAVIDSONHOMES.COM

The Montgomery with Bo... Exterior Options

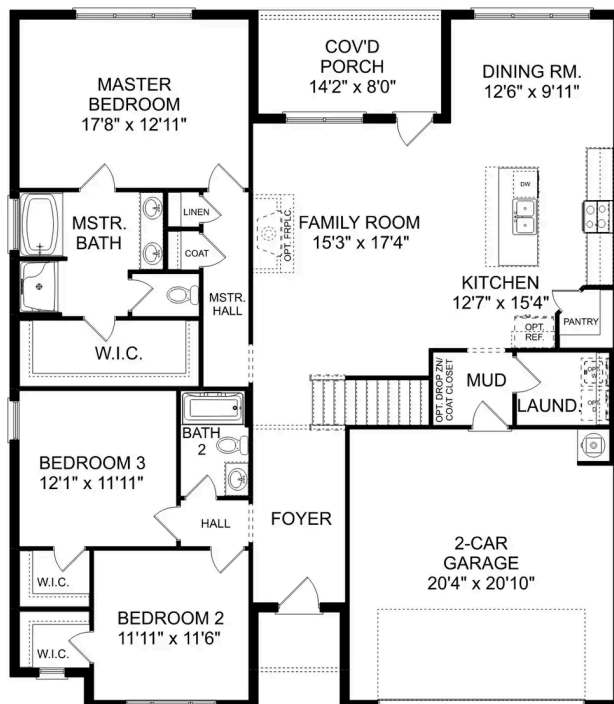
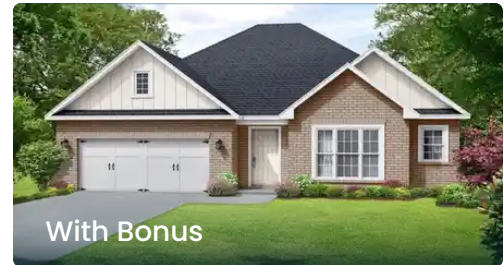


BEDS

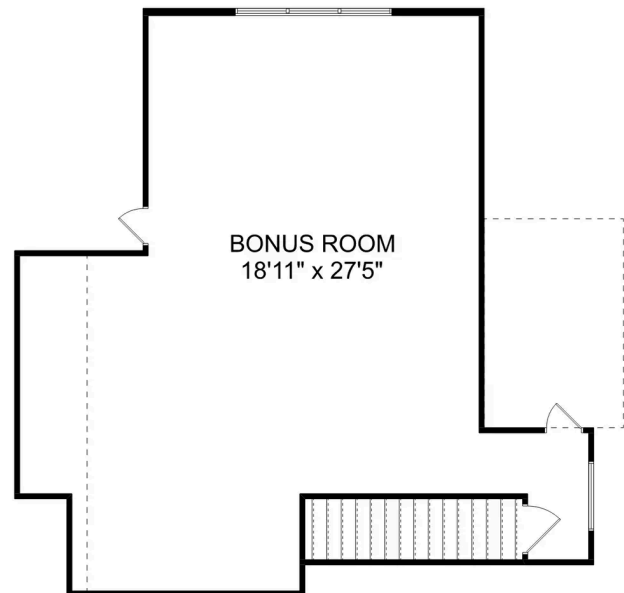
BATHS

SQ FT
2,684

PARKING



THE MONTGOMERY BONUS MAIN FLOOR



THE MONTGOMERY BONUS UPPER FLOOR



The Montgomery with Bonus

With modern touches like an open-concept, homeowner-centric layout, The Montgomery is one-level living at its finest. The kitchen showcases a huge island, corner pantry and stainless-steel appliances. The plan's open family room is perfect for entertaining guests, and the covered porch is easily accessible. Discover the plan's impressive Master Suite, complete with bright, inviting windows and a huge walk-in closet.

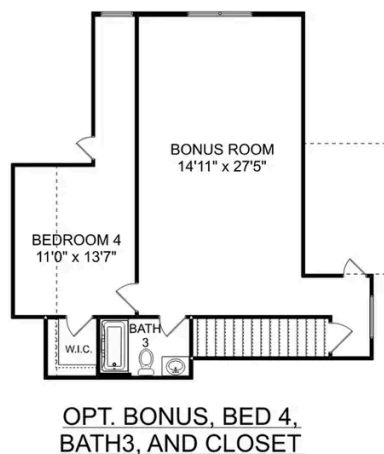
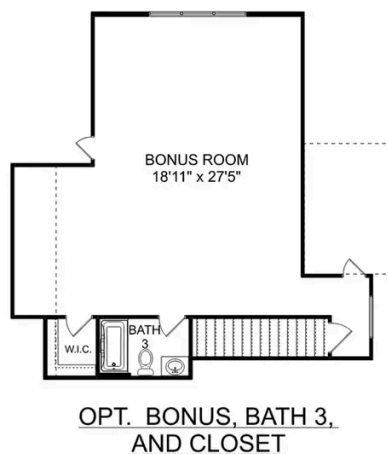
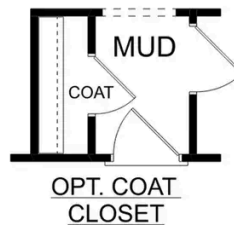
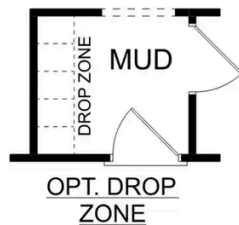
Make it your own with The Montgomery's flexible floor plan, featuring an optional bonus room, a covered porch and more! Just know that offerings vary by location, so please discuss our standard features and upgrade options with your community's agent.

BEDS
3

BATHS
2

SQ FT
2,684

GARAGE
2



THE MONTGOMERY BONUS OPTIONS

The Kirkland



Description

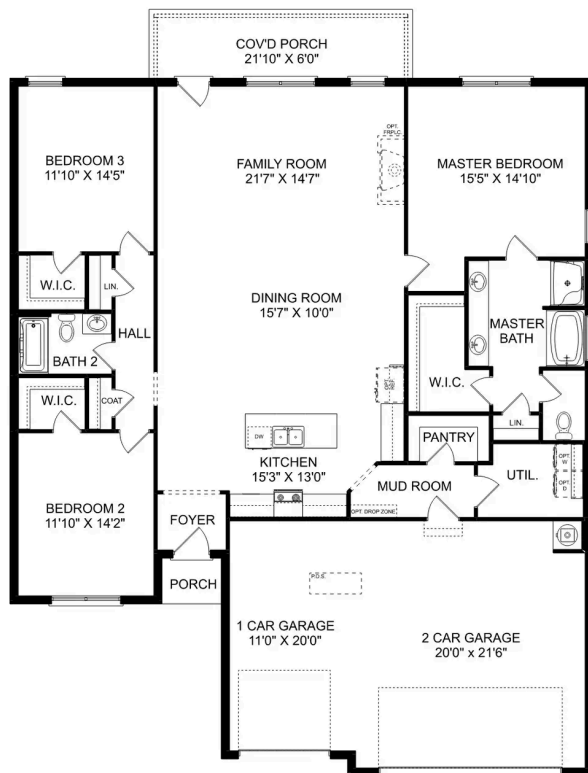
Behind the Kirkland's lovely, full-brick exterior lies a beautiful home. The foyer immediately opens up into a stunning, open-concept living space, combining the dining room, family room and kitchen.

BEDS
3

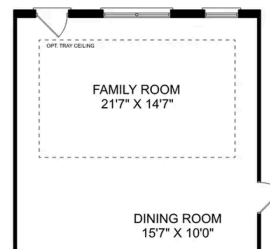
BATHS
2

SQ FT
2,076

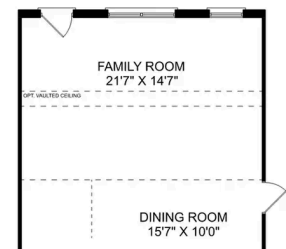
PARKING
3



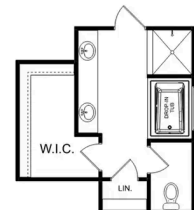
THE KIRKLAND



**OPTIONAL TRAY
CEILING**



**OPTIONAL VAULTED
CEILING**



**OPTIONAL LUXURY
MASTER BATH**

THE KIRKLAND OPTIONS

The Kirkland with Bonus



Description

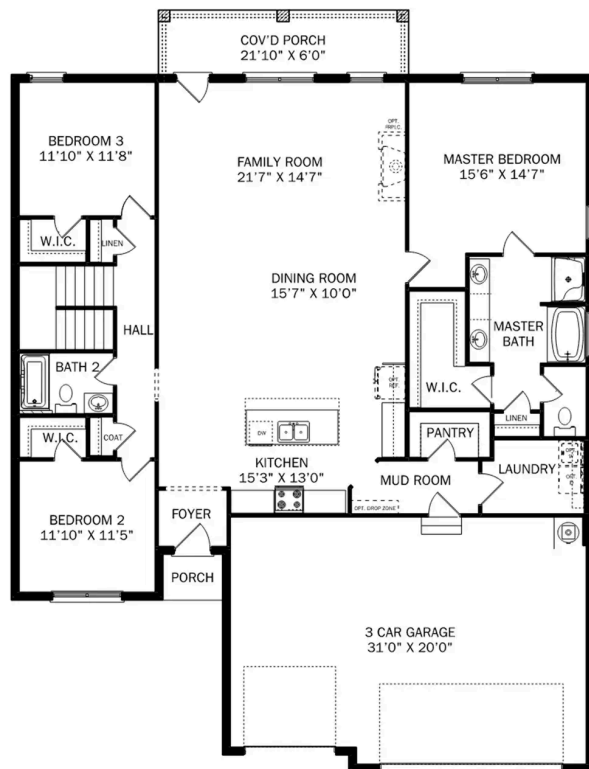
Behind the Kirkland's lovely, full-brick exterior lies a beautiful home. The foyer immediately opens up into a stunning, open-concept living space, combining the dining room, family room and kitchen.

BEDS
3

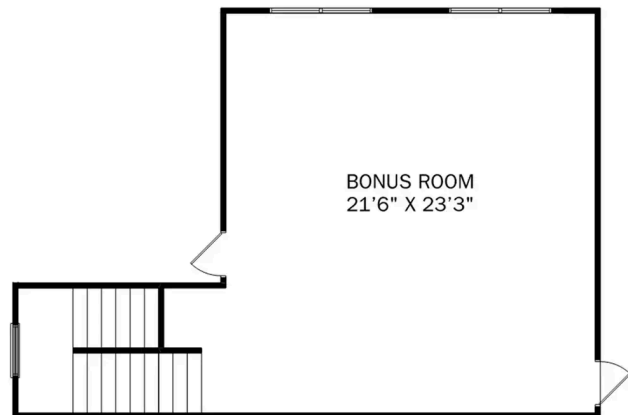
BATHS
2

SQ FT
2,767

PARKING
3



THE KIRKLAND BONUS MAIN FLOOR



THE KIRKLAND BONUS UPPER FLOOR

The Kirkland with Bonus

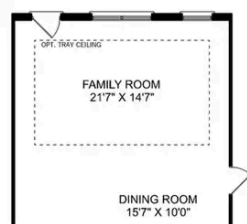
Behind the Kirkland's lovely, full-brick exterior lies a beautiful home. The foyer immediately opens up into a stunning, open-concept living space, combining the dining room, family room and kitchen. From the stunning island to its endless counterspace, the kitchen is perfect for entertaining, and the covered porch is always ready to take the party outside. The Master Suite features a lovely, bright bedroom and Master Bath, complete with shower, bathtub and walk-in closet.

BEDS
3

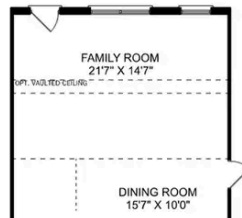
BATHS
2

SQ FT
2,767

GARAGE
3



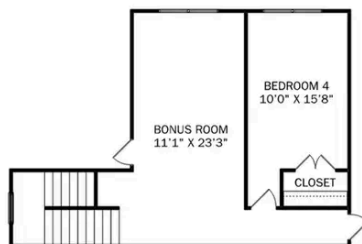
OPTIONAL TRAY
CEILING



OPTIONAL VAULTED
CEILING



OPTIONAL LUXURY
MASTER BATH



OPTIONAL BEDROOM 5



OPTIONAL BATH 3

THE KIRKLAND BONUS OPTIONS

The Rockford

Exterior Options

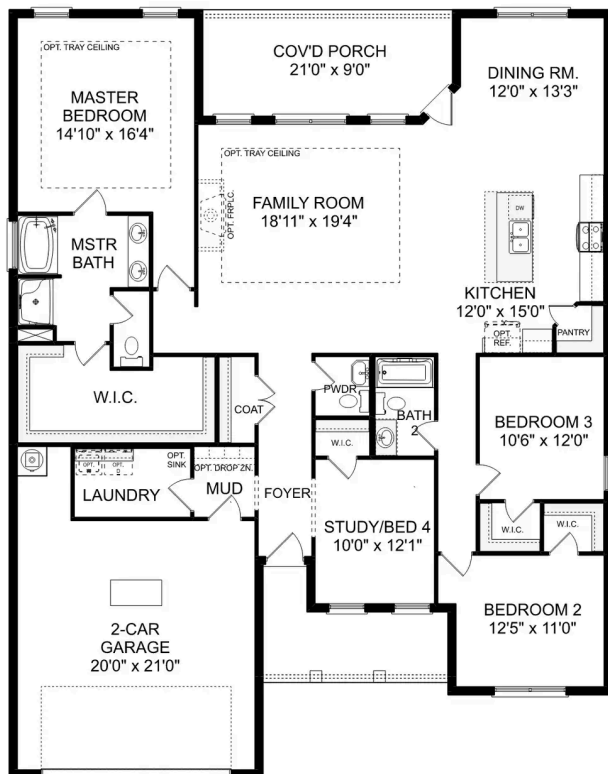


BEDS
3

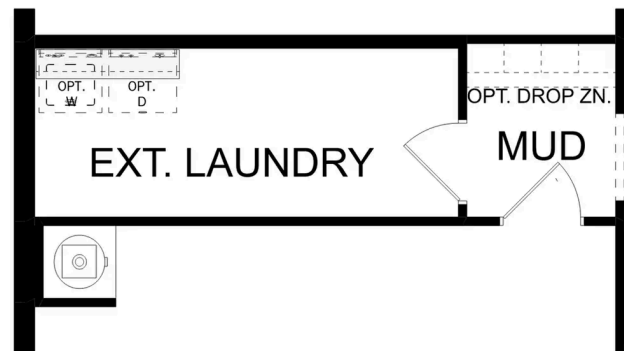
BATHS
2.5

SQ FT
2,286

PARKING
2



THE ROCKFORD



OPT. EXTENDED LAUNDRY
ADDS 30 HEATED S.F.

THE ROCKFORD OPTIONS

The Rockford with Bonus

Exterior Options

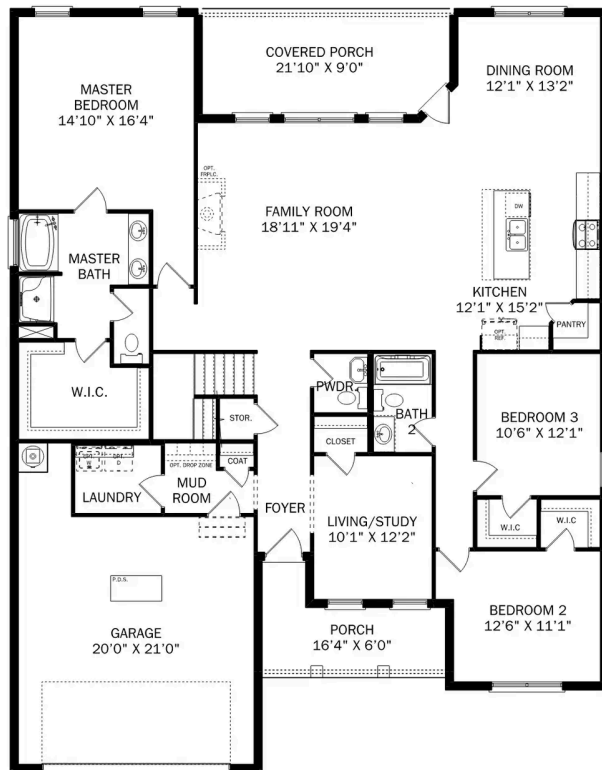


BEDS
3

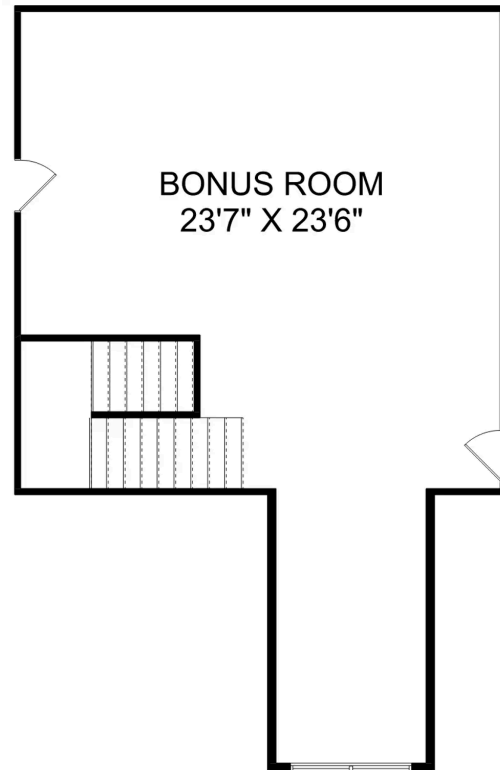
BATHS
2.5

SQ FT
2,904

PARKING
2



THE ROCKFORD BONUS MAIN FLOOR



THE ROCKFORD BONUS UPPER FLOOR

The Rockford with Bonus

With its charming, full-brick exterior, it's no wonder why The Rockford's our best-selling floor plan! A wall of windows floods the family room with natural light, and the kitchen invites you to cook – welcoming you with an oversized island, stainless-steel appliances and a large corner pantry. The isolated Master Suite features plenty of room and a massive walk-in closet.

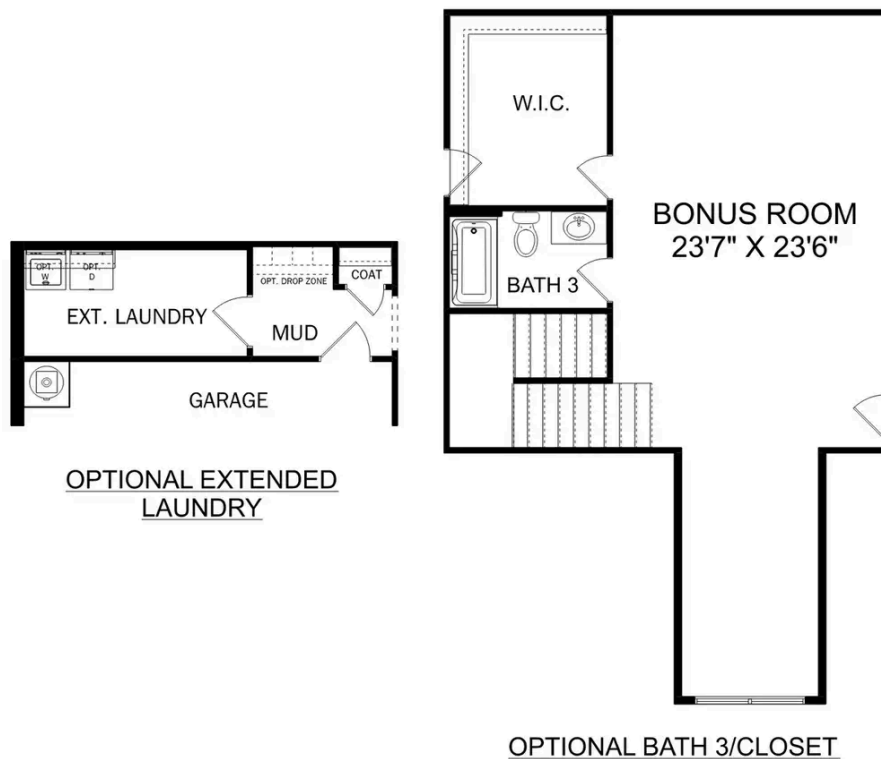
Make it your own with The Rockford's flexible floor plan, and consider replacing the home office with a fourth bedroom. It's your choice. Just know that offerings vary by location, so please discuss our standard features and upgrade options with your community's agent.

BEDS
3

BATHS
2.5

SQ FT
2,904

GARAGE
2



THE ROCKFORD OPTIONS

The Lanier



Description

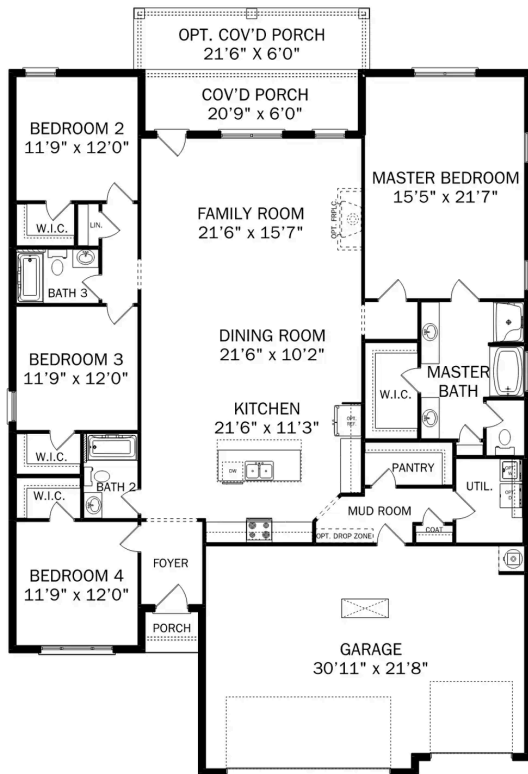
Within The Lanier's charming, full-brick exterior lies four bedrooms and plenty of space. The three-car garage leads into the home's mud room. The kitchen features a large pantry, double-sided island and more than enough counter space. Once there you'll discover the home's biggest feature – the huge, open-concept layout.

BEDS
4

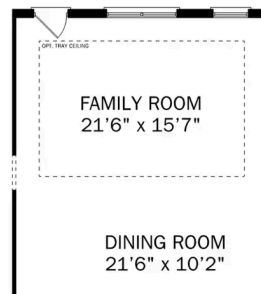
BATHS
3

SQ FT
2,411

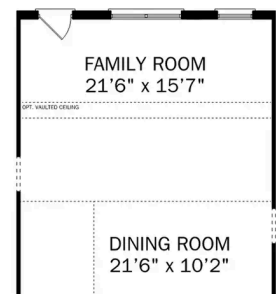
PARKING
3



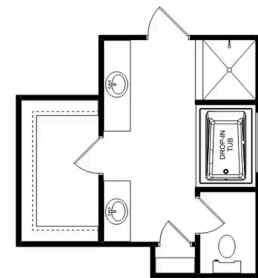
THE LANIER



**OPTIONAL TRAY
CEILING**



**OPTIONAL VAULTED
CEILING**



**OPTIONAL LUXURY
MASTER BATH**

THE LANIER OPTIONS

The Shelby A

Exterior Options

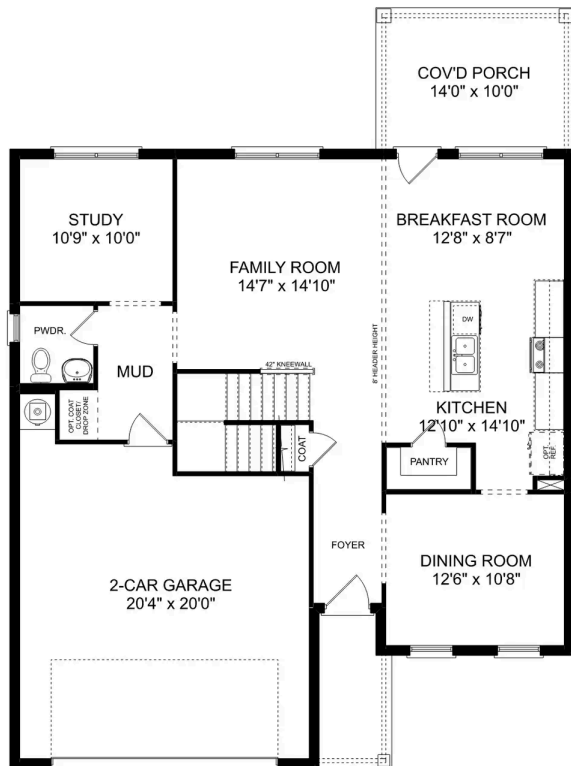


BEDS
3

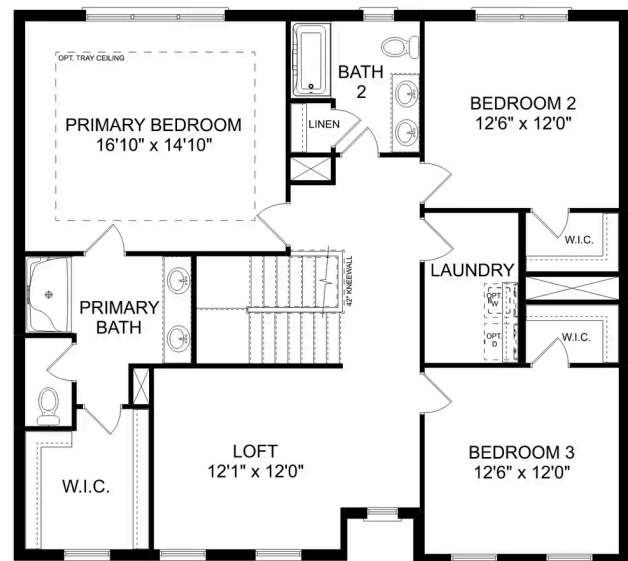
BATHS
2.5

SQ FT
2,452

PARKING
2



MAIN FLOOR



UPPER FLOOR

The Shelby A

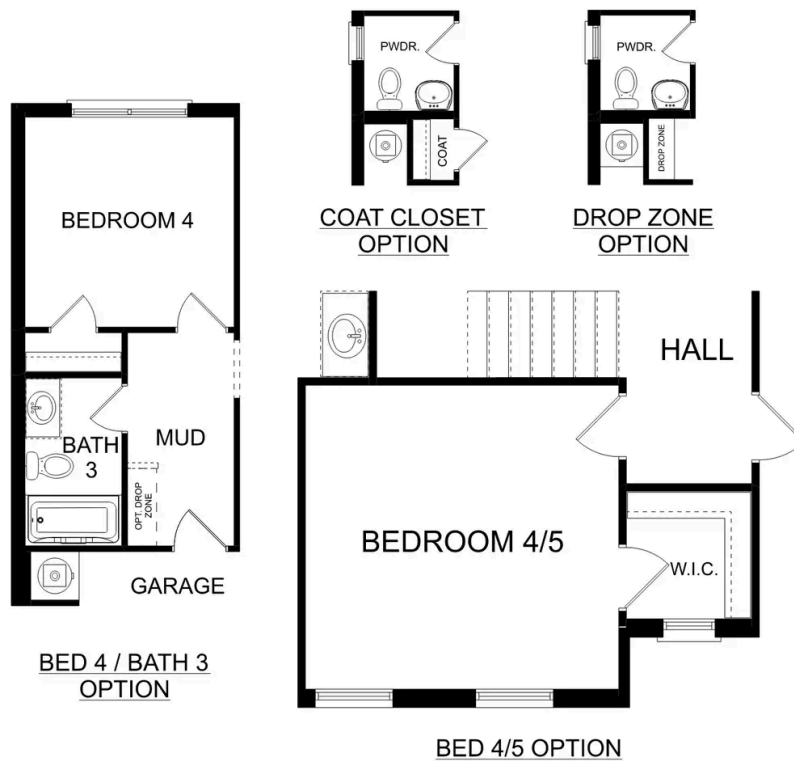
The Shelby welcomes you into a modern, open space, complete with a formal dining room and study. The kitchen overlooks an open-concept family room. The second floor features a spacious master bedroom with a large walk-in closet and master bath along with two additional bedrooms with ample walk-in closets of their own.

BEDS
3

BATHS
2.5

SQ FT
2,452

GARAGE
2



PLAN OPTIONS

The Harrison

Exterior Options

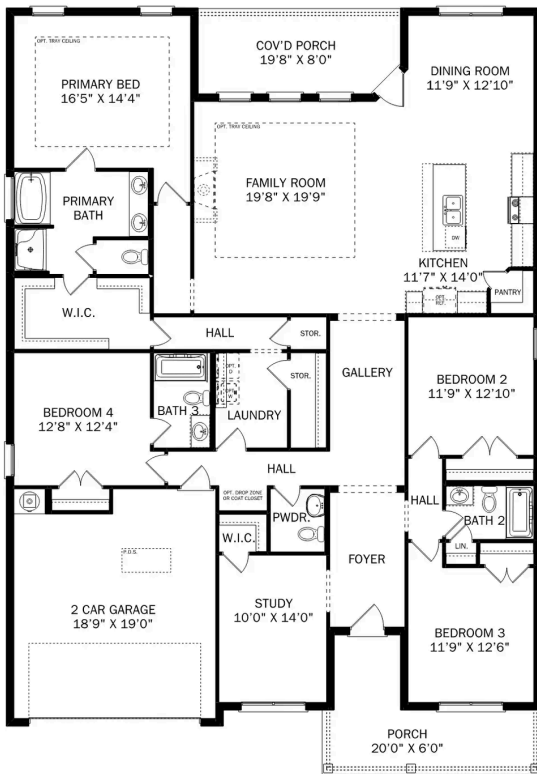


BEDS
4

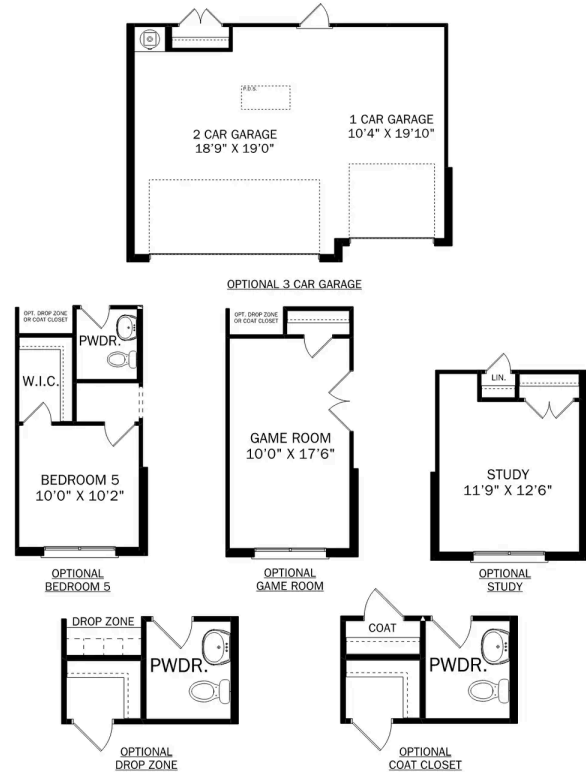
BATHS
3.5

SQ FT
2,678

PARKING
2



THE HARRISON



THE HARRISON OPTIONS

The Harrison with Bonus



Description

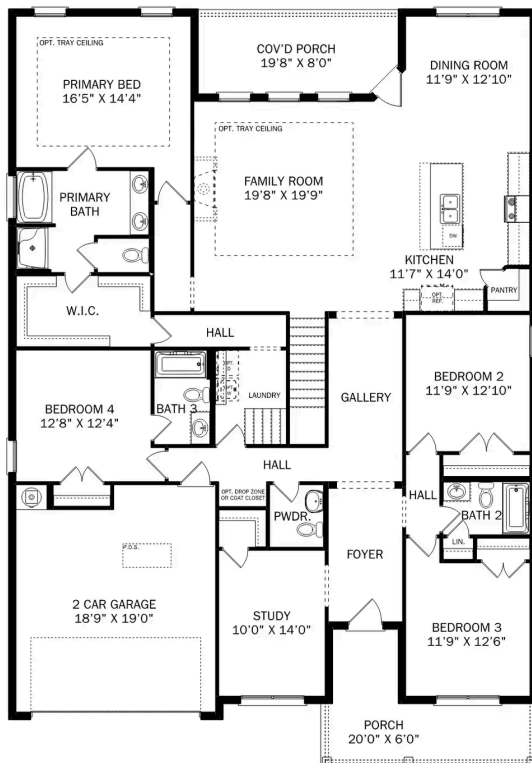
From its charming brick exterior to its open-concept kitchen/family room, The Harrison is perfect for entertaining. Its large kitchen island invites guests to pull up a chair, and its four spacious bedrooms ensure everyone has enough room.

BEDS
4

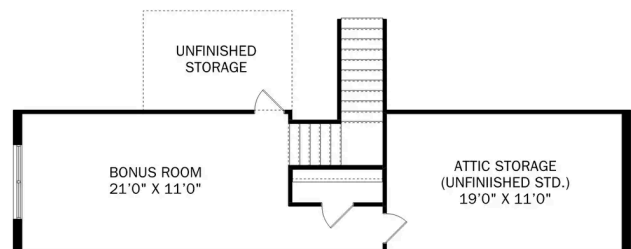
BATHS
3.5

SQ FT
2,992

PARKING
2



THE HARRISON BONUS MAIN FLOOR



THE HARRISON BONUS UPPER FLOOR

The Harrison with Bonus

From its charming brick exterior to its open-concept kitchen/family room, The Harrison is perfect for entertaining. Its large kitchen island invites guests to pull up a chair, and its four spacious bedrooms ensure everyone has enough room. The downstairs study offers a brief respite from the hustle and bustle, and the covered porch welcomes your family to grill and relax.

The Master Suite steals the show as its windows cast warm, natural light across the large room. The large walk-in closet is ready to handle your wardrobe, and the adjoining storage closet leads right into the laundry room – making laundry day significantly easier.

BEDS
4

BATHS
3.5

SQ FT
2,992

GARAGE
2



THE HARRISON BONUS OPTIONS

The Chelsea A

Exterior Options

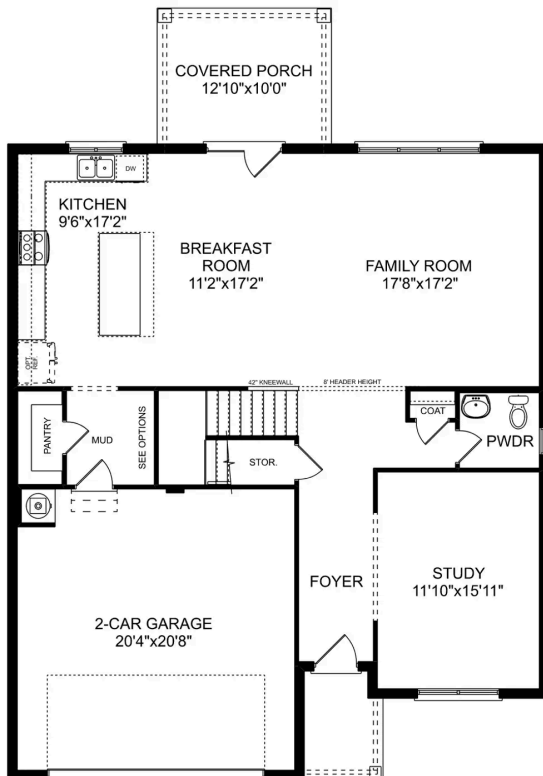


BEDS
4

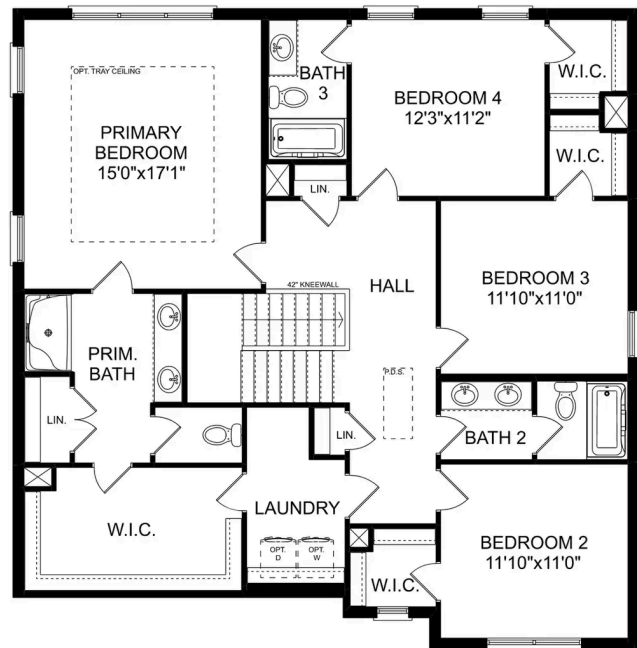
BATHS
3.5

SQ FT
2,769

PARKING
2



MAIN FLOOR



UPPER FLOOR

The Chelsea A

The Chelsea's windows fill the open floor plan with natural light, welcoming you into this charming home. The kitchen showcases ample counterspace, overlooking the breakfast and family room. A large study on the first floor offers potential, and the home's second floor features four bedrooms, each with plenty of closet space. The master bedroom is separate from the other bedrooms for added privacy, and the fourth bedroom features its own private bath.

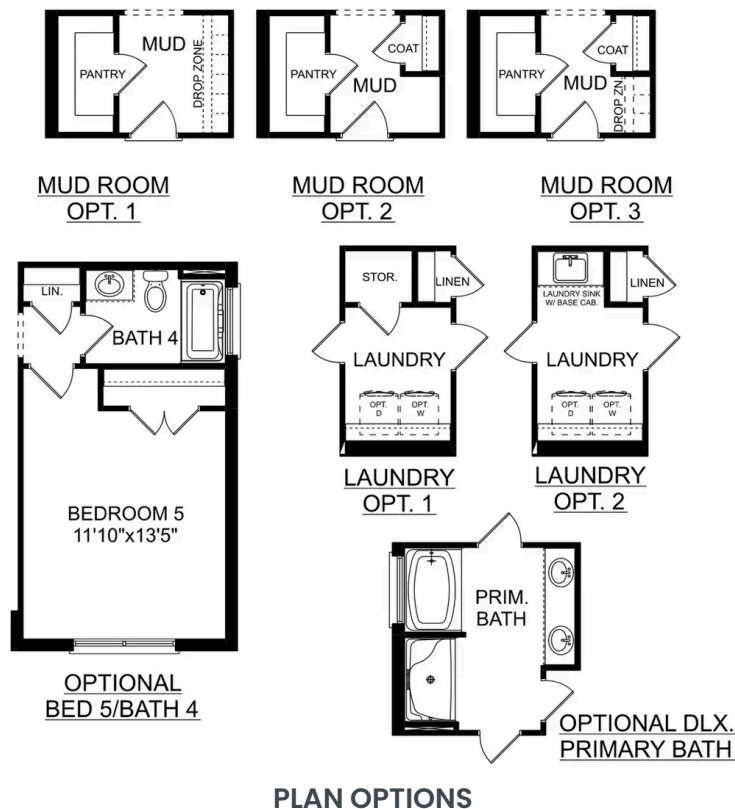
Make it your own with The Chelsea's flexible floor plan. Offerings vary by location, so please discuss your options with your community's agent.

BEDS
4

BATHS
3.5

SQ FT
2,769

GARAGE
2



The Madison A

Exterior Options



BEDS
5

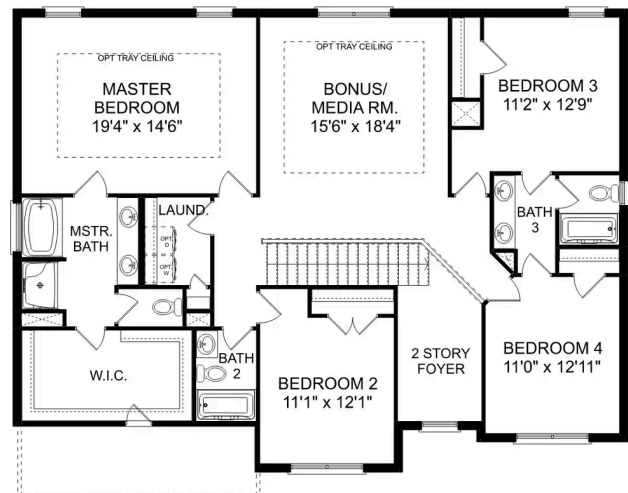
BATHS
4

SQ FT
3,199

PARKING
2



THE MADISON MAIN FLOOR



THE MADISON UPPER FLOOR

The Madison A

Behind the Madison's gorgeous brick exterior lies a massive layout, featuring five bedrooms, an elegant dining room and a welcoming study. From the designer kitchen's stainless-steel appliances to its oversized island, you'll want to make all your meals at home. The upstairs bonus room is perfect for family movie nights, and the Master Suite features a huge walk-in closet!

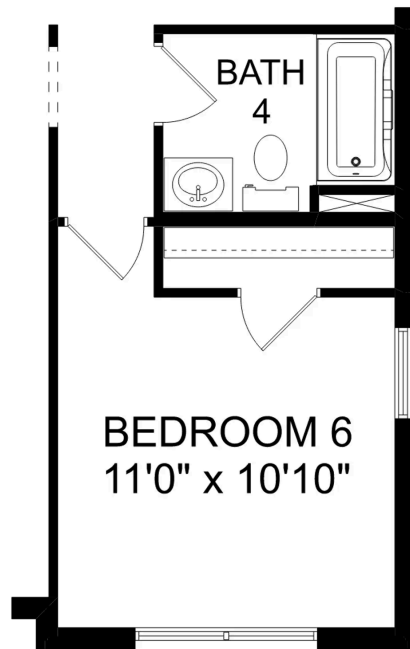
Make it your own with The Madison's flexible floor plan. Just know that offerings vary by location, so please discuss our standard features and upgrade options with your community's agent.

BEDS
5

BATHS
4

SQ FT
3,199

GARAGE
2



OPT. BEDROOM 6

THE MADISON OPTIONS



Cain Park in Hartselle, AL

Call (256) 344-3352
DAVIDSONHOMES.COM

The Emory



Description

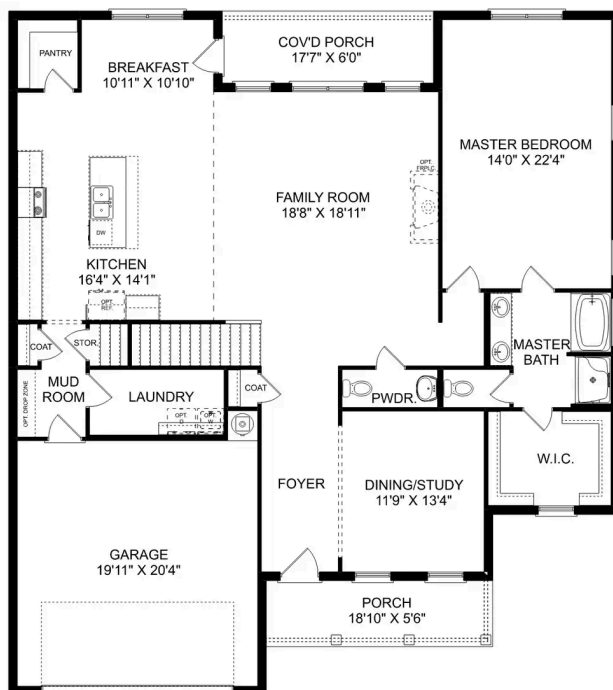
Enter The Emory, and you'll immediately discover why it's one of our most-loved plans. From its elegant dining room to its covered porch, this home has everything you need – and more! The designer kitchen features an oversized island, and the open-concept layout makes The Emory feel even larger.

BEDS
4

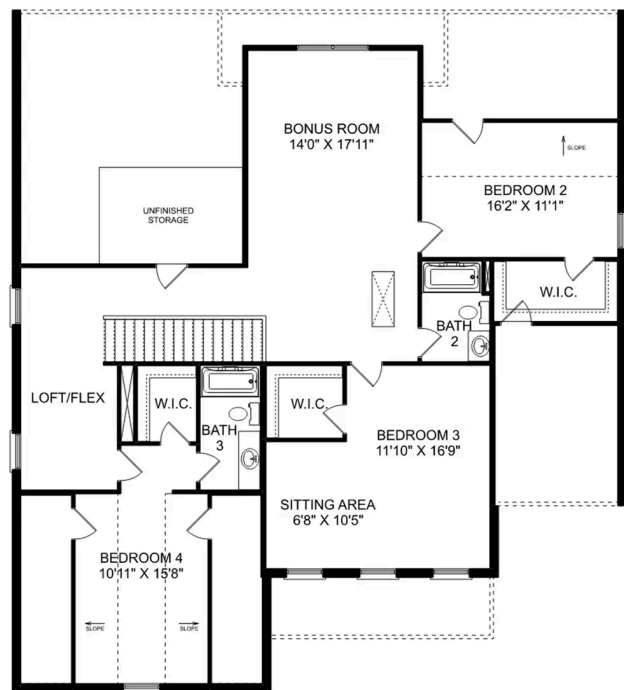
BATHS
3.5

SQ FT
3,563

PARKING
2



THE EMORY MAIN FLOOR



THE EMORY UPPER FLOOR

Copyright 2024 Davidson Homes, Inc. | All Rights Reserved | Davidson Homes is a leading builder of quality new homes across the Southeast. Davidson Homes reserves the right to adjust items listed without prior notice or obligation. Such items may include, but are not limited to, options, included features and community information, pricing, amenities, square footage, terms or availability. Features, options, floor plans, elevations, colors, dimensions and photographs are for illustration purposes and may vary from homes built. Please see your community specialist for details. Equal housing lender. Last updated 03/07/2023.

